

Art Department



Samantha Traina

www.art-dept.com

Art Department



Samantha Traina

www.art-dept.com

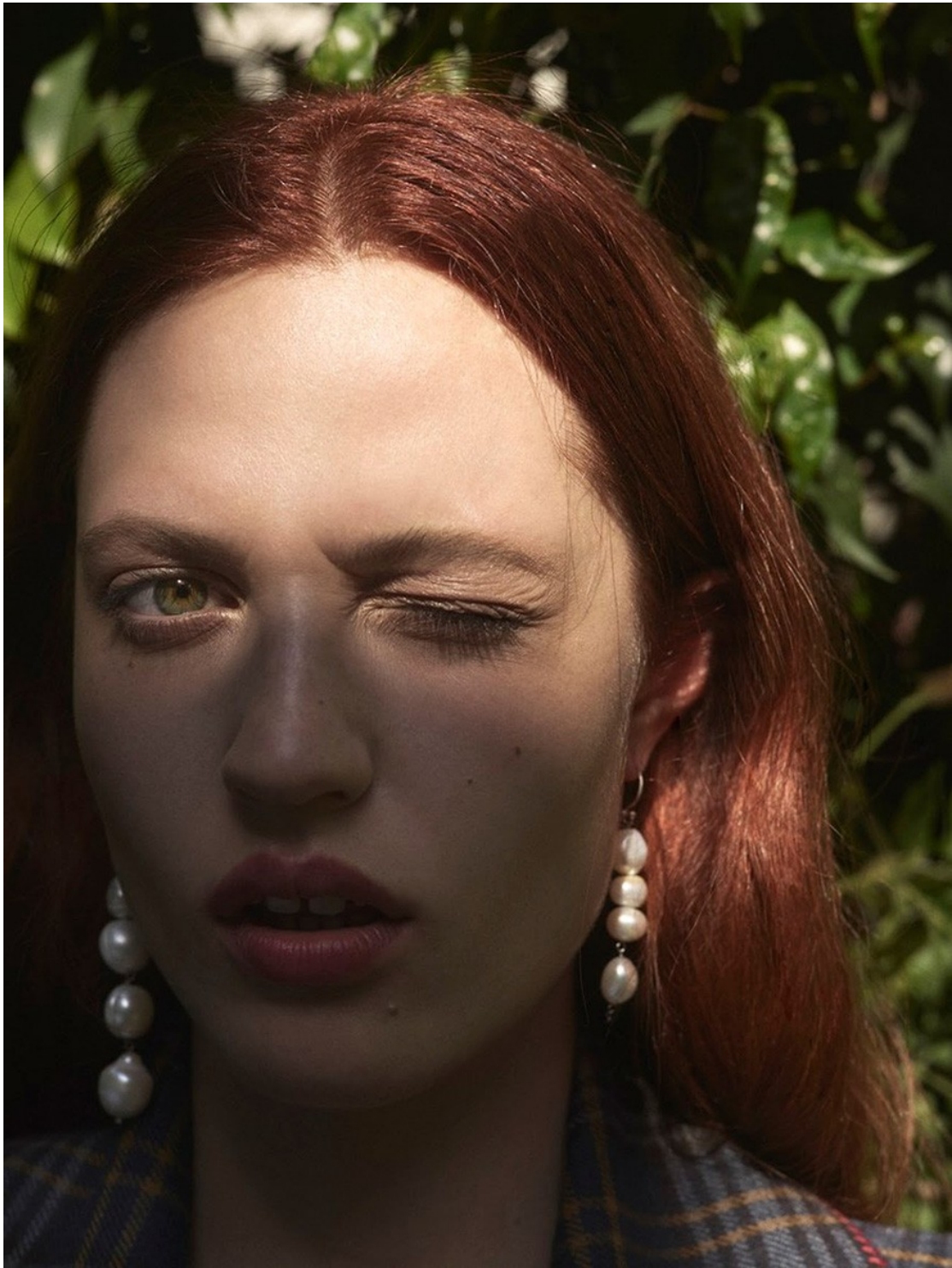
Art Department



Samantha Traina

www.art-dept.com

Art Department



Samantha Traina

www.art-dept.com

Art Department



Samantha Traina

www.art-dept.com

Art Department



Samantha Traina

www.art-dept.com

Art Department



Samantha Traina

www.art-dept.com

Art Department



Samantha Traina

www.art-dept.com

Art Department



Samantha Traina

www.art-dept.com

Art Department



Samantha Traina

www.art-dept.com

Art Department



Samantha Traina

www.art-dept.com

Art Department



Samantha Traina

www.art-dept.com

Art Department



Samantha Traina

www.art-dept.com

Art Department



Samantha Traina

www.art-dept.com

Art Department



Samantha Traina

www.art-dept.com

Art Department



Samantha Traina

www.art-dept.com

Art Department



Samantha Traina

www.art-dept.com

Art Department



Samantha Traina

www.art-dept.com

Art Department



Samantha Traina

www.art-dept.com

Art Department



Samantha Traina

www.art-dept.com

Art Department



Stella McCartney dress,
\$1,925. Oscar de la Renta
necklace, \$475. Pierre Hardy
shoes, \$825. The Webster.

Samantha Traina

www.art-dept.com

Art Department



Samantha Traina

www.art-dept.com

Art Department



Louis Vuitton dress, price upon request.
Manolo Blahnik pumps, \$695, Barneys
New York. Rag & Bone hat, \$175, Cartier
necklace, David Webb bracelet, and ring.
OPPOSITE Bottega Veneta dress.

Samantha Traina

www.art-dept.com

Art Department



Samantha Traina

www.art-dept.com

Art Department



Reese Witherspoon wears
cotton, silk and cashmere top,
about £700; cotton skirt, about
£600, both Nina Ricci. Patent
heels, £375, Jimmy Choo.
Platinum and diamond earrings;
white gold ring; platinum and
diamond bracelet, all from
a selection, Chopard

WILD AT HEART

Far from the cliché of the all-American blonde,
Reese Witherspoon is a sophisticated, intelligent star
who revels in making tough choices, in work and in life

BY AJESH PATALAY
PHOTOGRAPHS BY ALEXI LUBOMIRSKI
STYLED BY SAMANTHA TRAINA

Samantha Traina

www.art-dept.com

Art Department



Samantha Traina

www.art-dept.com

Art Department



THIS PAGE: beaded crepe dress, £5,150, Balenciaga. Platinum and diamond bracelet (just seen), from a selection, Chopard. OPPOSITE: cotton and lace shirt, about £860, Nina Ricci. Organza skirt, £7,200, Michael Kors. Patent heels, £450, Jimmy Choo. Platinum and diamond earrings; platinum and diamond bracelet, both from a selection, Chopard

ALEXI LUBOMIRSKI

Samantha Traina

www.art-dept.com

Art Department



Samantha Traina

www.art-dept.com

Art Department

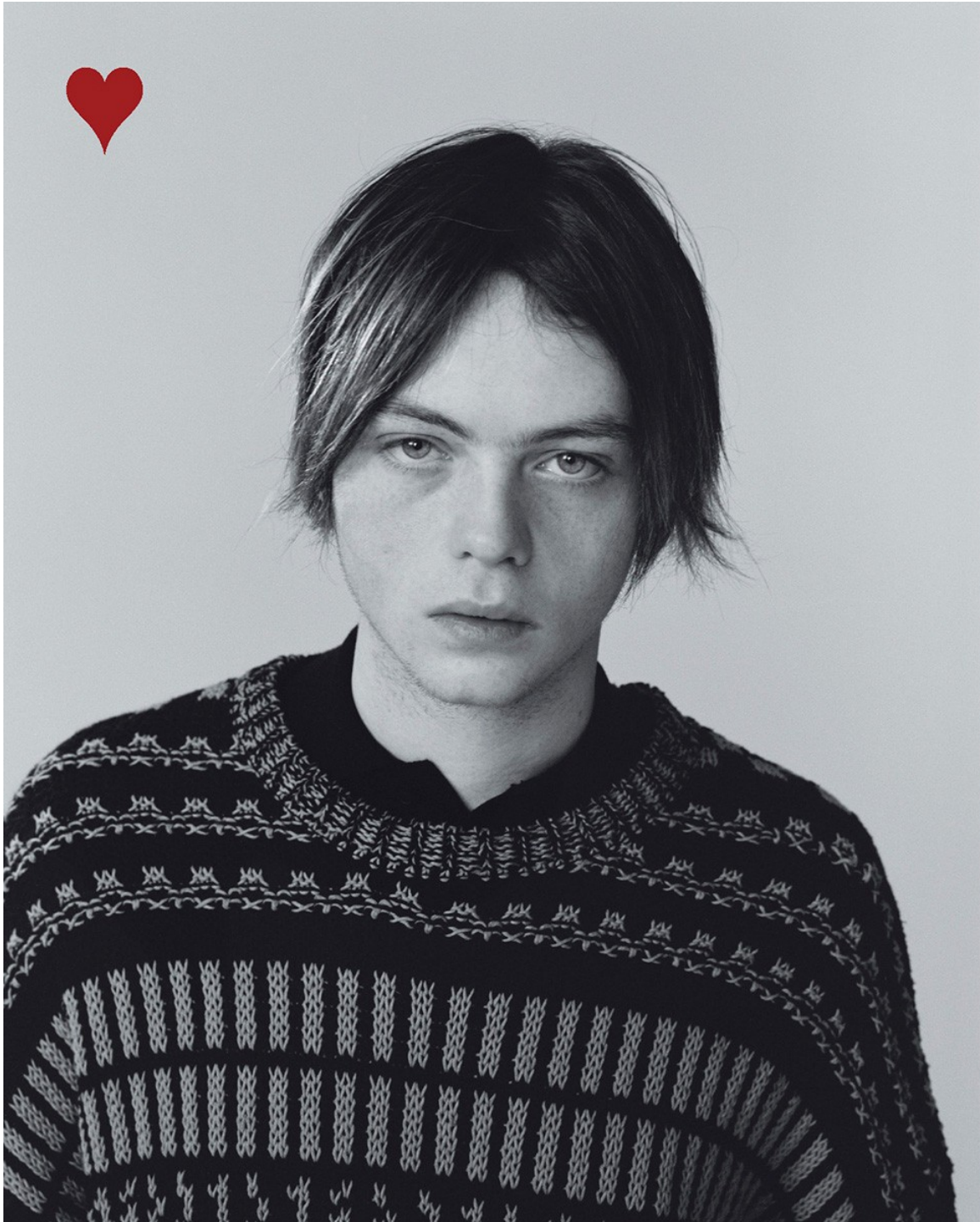


Cotton dress, £1,250, Altuzarra.
Leather heels, £375, Jimmy
Choo. Platinum and diamond
bracelet; white gold and
diamond ring (right hand, just
seen), both from a selection,
Chopard. Other ring, her own.
See Stockists for details. Hair by
Giannandrea for Macadamia
Professional. Make-up by Molly
R Stern, using Lancôme.
Manicure by Marisa Carmichael
at Streeters, using Essie. Stylist's
assistants: Florrie Thomas and
Mary Ossovskeya. Set design
by Tom Thurnauer

Samantha Traina

www.art-dept.com

Art Department



Samantha Traina

www.art-dept.com

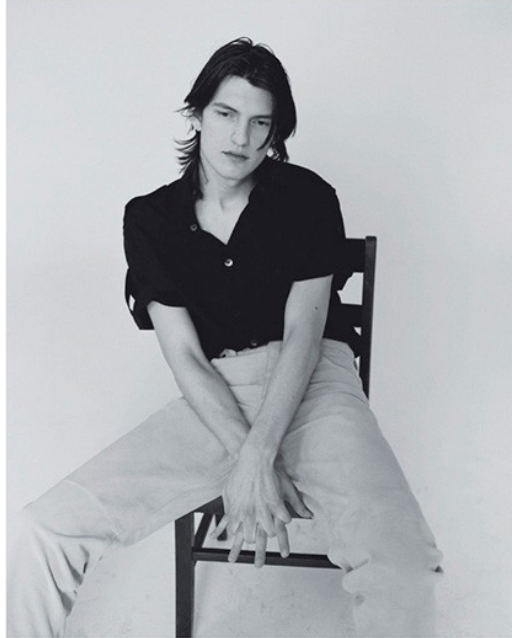
Art Department



Samantha Traina

www.art-dept.com

Art Department



NELLA PAGINA ACCANTO:
MAGLIA AMI, CAMICIA NAVIGARE.

CAMICIA SALVATORE FERRAGAMO,
PANTALONI ACNE STUDIOS.

207

Samantha Traina

www.art-dept.com

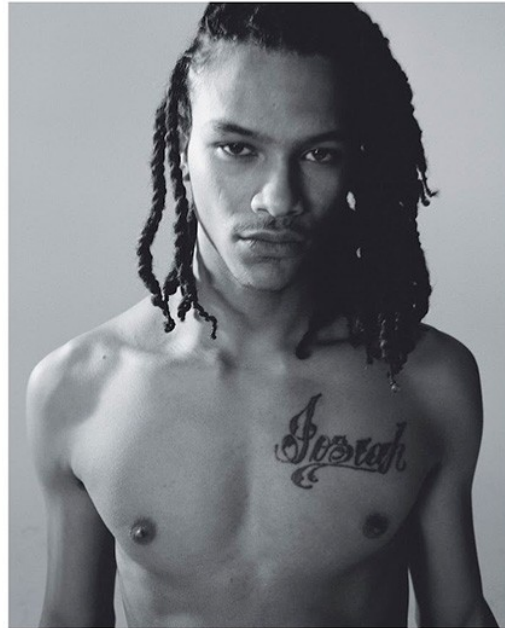
Art Department



Samantha Traina

www.art-dept.com

Art Department



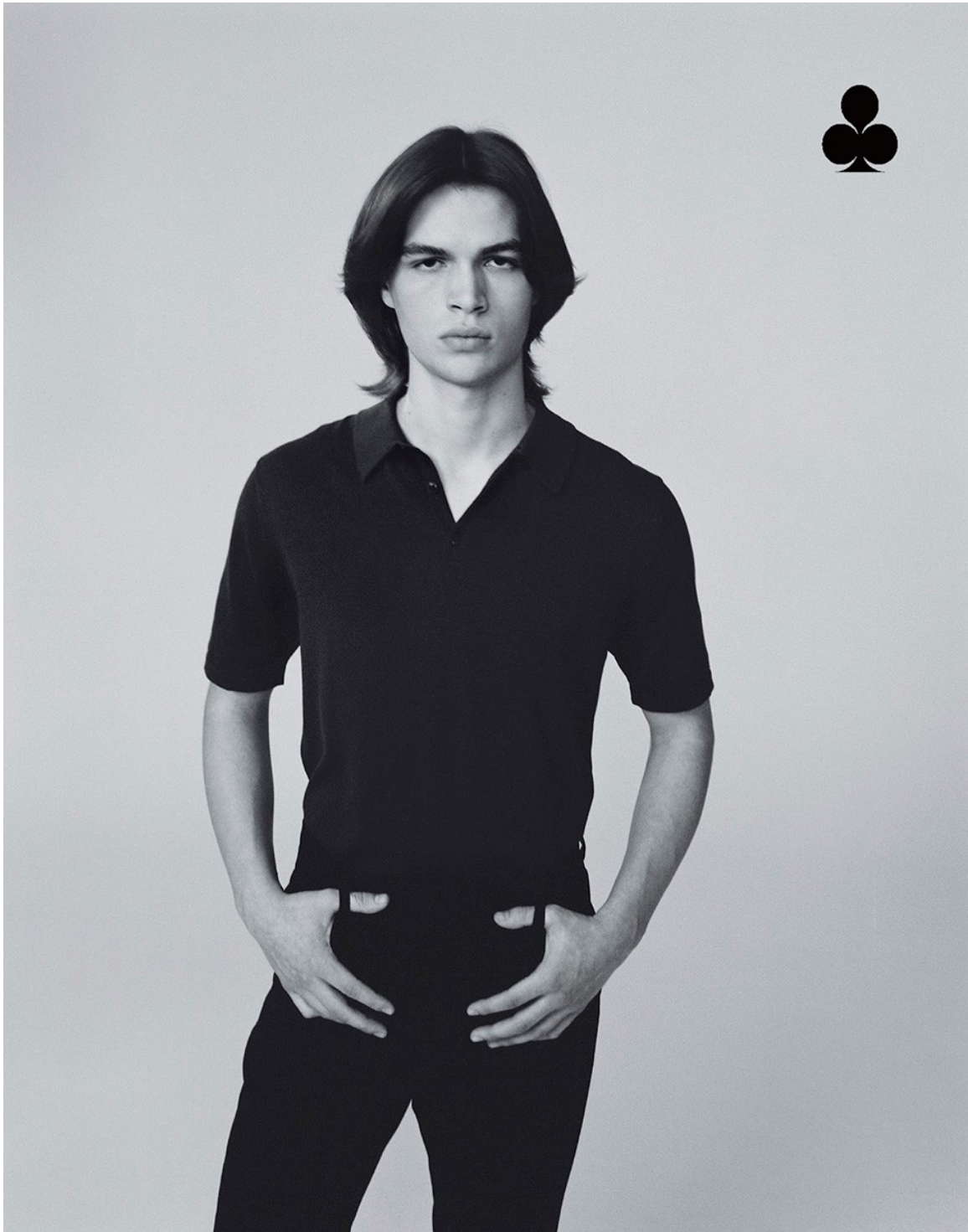
PANTALONI LEO JO BOSCO, SCARPE
HERO GARDINI, ANELLO A.P.C.
NELLA PAGINA ACCANTO:
POLO MARCEL RIZZ, PANTALONI
BRIES VAN NOTER.

MODELLI: LINCOLN WOELK @ SOUL,
OLAJUWON ANDERSON @ HERDES;
RYAN EGGER, JULIEN OLIVER
@ CLICK, ASHTON SMITH @ STATE.
GROOMING: LUCAS WILSON @
HOME AGENCY. STYLING ASSISTANT:
DIANA DOUGLAS.

Samantha Traina

www.art-dept.com

Art Department



Samantha Traina

www.art-dept.com

Art Department



Samantha Traina

www.art-dept.com

Art Department



Samantha Traina

www.art-dept.com

Art Department



Samantha Traina

www.art-dept.com

Art Department



Samantha Traina

www.art-dept.com

Art Department



Samantha Traina

www.art-dept.com

Art Department



Samantha Traina

www.art-dept.com

Art Department



Samantha Traina

www.art-dept.com

Art Department



Samantha Traina

www.art-dept.com

Art Department



Samantha Traina

www.art-dept.com

Art Department



Samantha Traina

www.art-dept.com

Art Department



above, left to right
jeans from A.P.C.
sweater by KRIS VAN ASSCHE FW15
opposite
jeans from A.P.C.; boots from RED WING

Samantha Traina

www.art-dept.com

Art Department



Samantha Traina

www.art-dept.com

Art Department



Samantha Traina

www.art-dept.com

Art Department



Samantha Traina

www.art-dept.com

Art Department



Samantha Traina

www.art-dept.com

Art Department



Samantha Traina

www.art-dept.com

Art Department



Samantha Traina

www.art-dept.com

Art Department



Samantha Traina

www.art-dept.com

Art Department



Samantha Traina

www.art-dept.com

Art Department



Samantha Traina

www.art-dept.com

Art Department



Samantha Traina

www.art-dept.com

Art Department



Samantha Traina

www.art-dept.com

Art Department



Samantha Traina

www.art-dept.com

Art Department



Samantha Traina

www.art-dept.com

Art Department



Samantha Traina

www.art-dept.com