

Art Department



Michele Faro

www.art-dept.com

Art Department



Michele Faro

www.art-dept.com

Art Department



Michele Faro

www.art-dept.com

Art Department



Michele Faro

www.art-dept.com

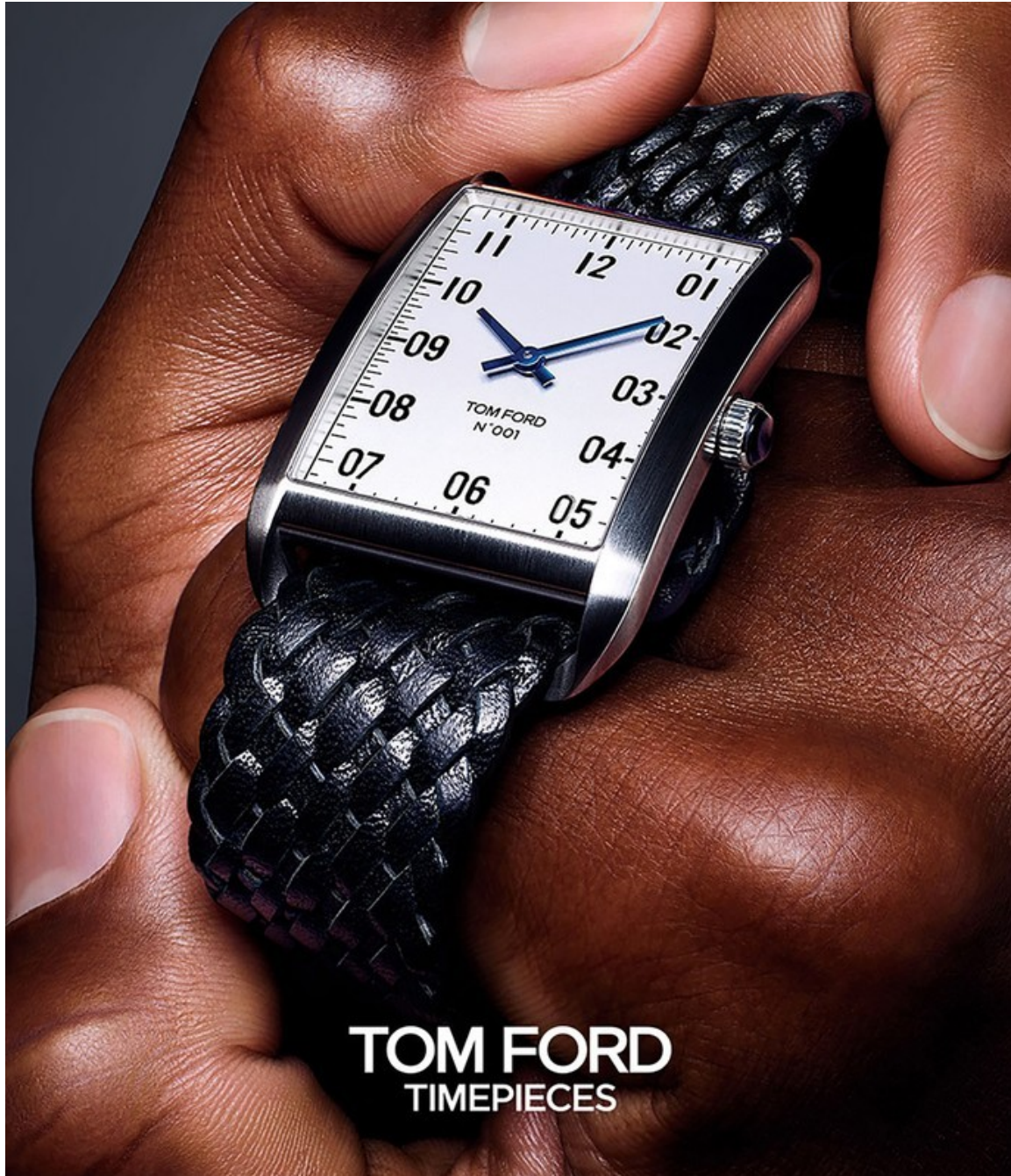
Art Department



Michele Faro

www.art-dept.com

Art Department



Michele Faro

www.art-dept.com

Art Department



Michele Faro

www.art-dept.com

Art Department



Michele Faro

www.art-dept.com

Art Department



Michele Faro

www.art-dept.com

Art Department



Michele Faro

www.art-dept.com

Art Department



Michele Faro

www.art-dept.com

Art Department



Michele Faro

www.art-dept.com

Art Department



Michele Faro

www.art-dept.com

Art Department



The image displays three Tom Ford N°001 watches arranged vertically. The central watch has a black dial with silver-toned hour markers and hands, and a black metal bracelet. The watch on the left has a white dial with blue hour markers and hands, and a silver-toned metal bracelet. The watch on the right has a black dial with white hour markers and hands, and a silver-toned metal bracelet. All three watches have a rectangular case with rounded corners. The background is a dark, textured surface.

AN EXCEPTIONAL PIECE

DISCOVER YOUR TOM FORD TIMEPIECE. NOW AVAILABLE
WITH A BRACELET STRAP FOR THE 001 TIMEPIECE.

DISCOVER CUSTOMIZE

Michele Faro

www.art-dept.com

Art Department



Michele Faro

www.art-dept.com

Art Department



Michele Faro

www.art-dept.com

Art Department



Michele Faro

www.art-dept.com

Art Department



Michele Faro

www.art-dept.com

Art Department



Michele Faro

www.art-dept.com

Art Department



Michele Faro

www.art-dept.com

Art Department



Michele Faro

www.art-dept.com

Art Department



Michele Faro

www.art-dept.com

Art Department



Michele Faro

www.art-dept.com

Art Department



Michele Faro

www.art-dept.com

Art Department



Michele Farò

www.art-dept.com

Art Department



Michele Faro

www.art-dept.com

Art Department



Michele Faro

www.art-dept.com

Art Department



Michele Faro

www.art-dept.com

Art Department



Michele Faro

www.art-dept.com

Art Department



Michele Faro

www.art-dept.com

Art Department



Michele Faro

www.art-dept.com

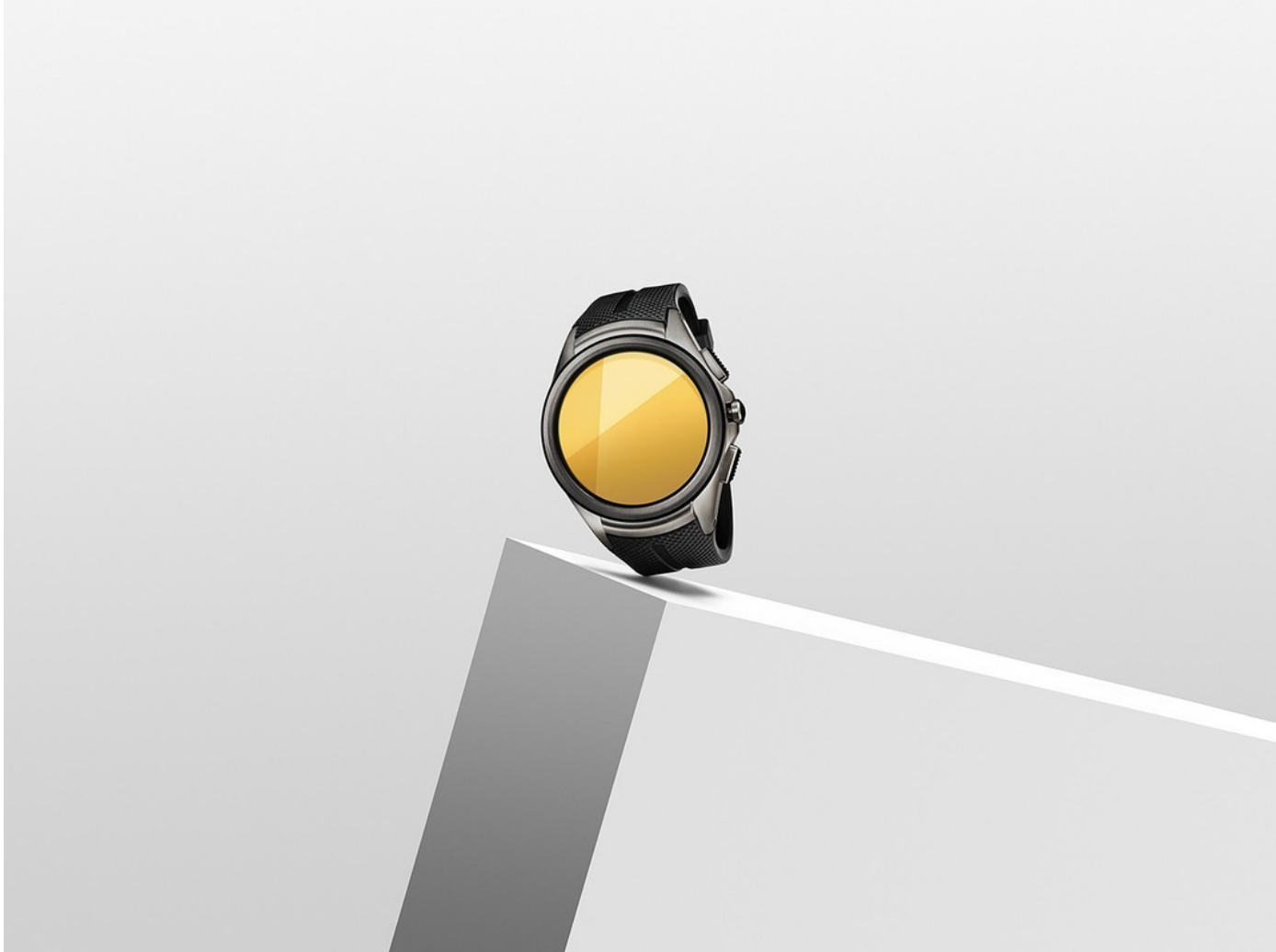
Art Department



Michele Faro

www.art-dept.com

Art Department



Michele Faro

www.art-dept.com

Art Department



Michele Faro

www.art-dept.com

Art Department



Michele Faro

www.art-dept.com

Art Department



Michele Faro

www.art-dept.com

Art Department



Michele Faro

www.art-dept.com

Art Department



From **Movado**: Men's Fiero™ in tungsten carbide with tonneau shape and black dial, #1901, 2,095.00. Men's Faceto™ in stainless steel with black dial, diamond bezel and markers, #1902, 2,195.00. Ladies' Faceto™ in stainless steel with black dial, diamond bezel and markers, #1903, 1,895.00. Opposite page: Ladies' Vivo™ with stainless steel case, black sting ray strap, black museum dial and diamond bezel, #1801, 1,495.00. Ladies' Vivo™ with stainless steel bangle, mother-of-pearl museum dial and diamond bezel, #1802, 1,595.00. Only at Bloomingdale's, ladies' Bareletto™ with stainless steel mesh bangle, black museum dial, diamond accents and onyx end stones, #1803, 1,995.00.

Michele Faro

www.art-dept.com

Art Department



Michele Faro

www.art-dept.com

Art Department



Michele Faro

www.art-dept.com

Art Department



Michele Faro

www.art-dept.com

Art Department



Michele Faro

www.art-dept.com

Art Department

Where + Wear
The Upgrade

Leave Your Bracelets at Home
When your watch looks like this, you don't need to pack any other accessories.

Clockwise from top left: **Chopard** Happy 8 watch (us.chopard.com; \$20,010); **Cartier** High Jewelry watch (cartier.us; price upon request); **Graff** Leaf watch (graffdiamonds.com; price upon request); **Louis Vuitton** Tambour Bijou Secret (louisvuitton.com; \$28,400); **Dior** Timepieces La Mini D De Dior Snow Set watch (dior.com; price upon request); **Tiffany & Co.** diamond cocktail watch (tiffany.com; \$30,000); **Goyard** leather case (Goyard boutiques nationwide; \$4,485).

44 CONDE NAST TRAVELER / NOVEMBER 2016

PHOTOGRAPH BY GRANT CORNETT

Michele Faro

www.art-dept.com

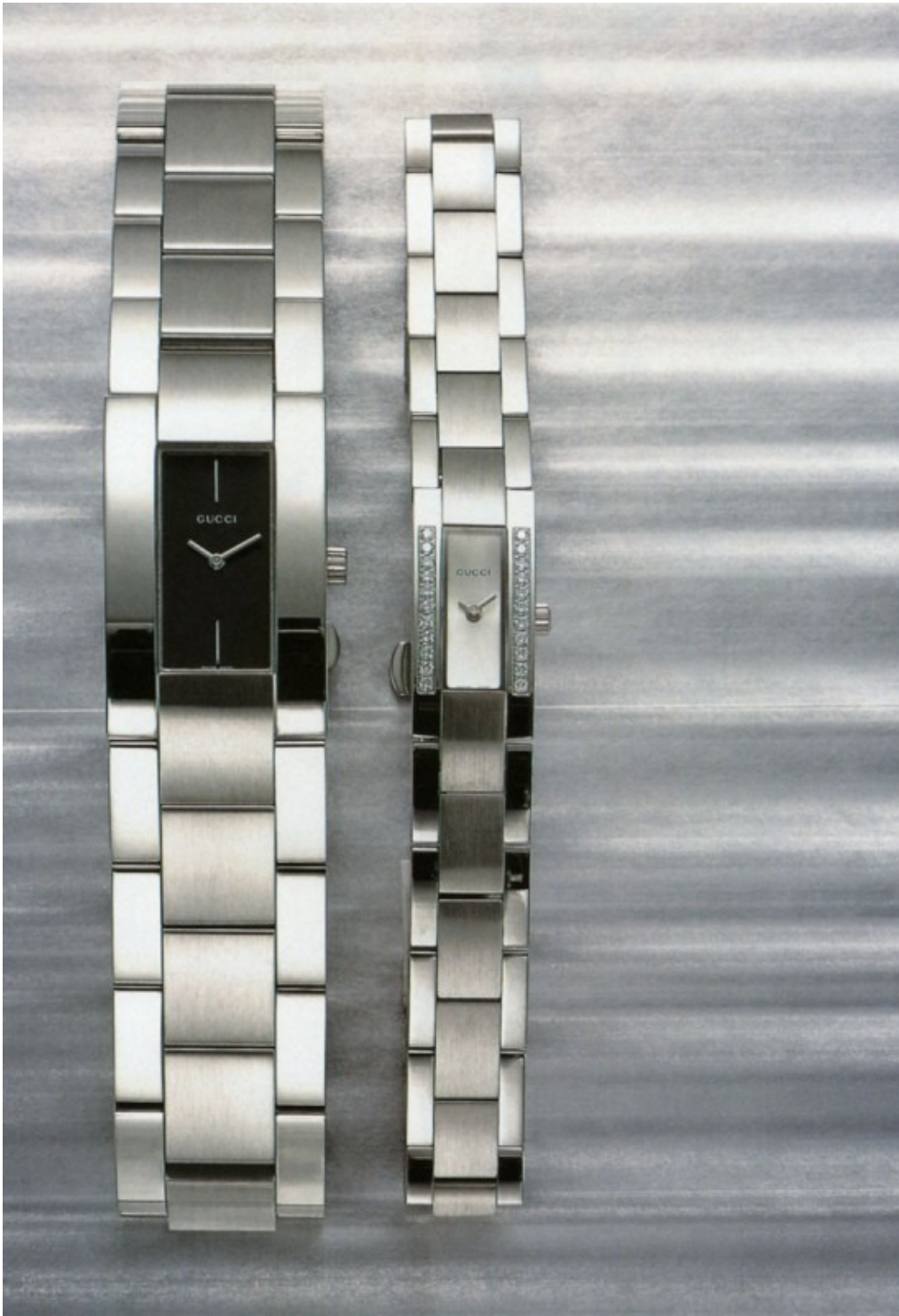
Art Department



Michele Faro

www.art-dept.com

Art Department



Michele Faro

www.art-dept.com

Art Department



Michele Faro

www.art-dept.com

Art Department



Michele Faro

www.art-dept.com

Art Department



Michele Faro

www.art-dept.com

Art Department



Michele Faro

www.art-dept.com

Art Department



Michele Faro

www.art-dept.com

Art Department



Michele Farò

www.art-dept.com

Art Department

CITIZEN,
BULOVA &
SEIKO



Michele Faro

www.art-dept.com

Art Department

MOVADO BOLD



Michele Faro

www.art-dept.com

Art Department



Michele Faro

www.art-dept.com

Art Department



Michele Farò

www.art-dept.com

Art Department



Michele Faro

www.art-dept.com

Art Department



Michele Faro

www.art-dept.com