

# Art Department



Abraham Latham

[www.art-dept.com](http://www.art-dept.com)

# Art Department



Abraham Latham

[www.art-dept.com](http://www.art-dept.com)



# Art Department



Abraham Latham

[www.art-dept.com](http://www.art-dept.com)

# Art Department



Abraham Latham

[www.art-dept.com](http://www.art-dept.com)



# Art Department



Abraham Latham

[www.art-dept.com](http://www.art-dept.com)

# Art Department



Abraham Latham

[www.art-dept.com](http://www.art-dept.com)



# Art Department



Abraham Latham

[www.art-dept.com](http://www.art-dept.com)

# Art Department



Abraham Latham

[www.art-dept.com](http://www.art-dept.com)



# Art Department



Abraham Latham

[www.art-dept.com](http://www.art-dept.com)

# Art Department



Abraham Latham

[www.art-dept.com](http://www.art-dept.com)



# Art Department



Abraham Latham

[www.art-dept.com](http://www.art-dept.com)



# Art Department



Abraham Latham

[www.art-dept.com](http://www.art-dept.com)



# Art Department



Abraham Latham

[www.art-dept.com](http://www.art-dept.com)



# Art Department



Abraham Latham

[www.art-dept.com](http://www.art-dept.com)



# Art Department



Abraham Latham

[www.art-dept.com](http://www.art-dept.com)



# Art Department



Abraham Latham

[www.art-dept.com](http://www.art-dept.com)



# Art Department



Abraham Latham

[www.art-dept.com](http://www.art-dept.com)



# Art Department



Abraham Latham

[www.art-dept.com](http://www.art-dept.com)



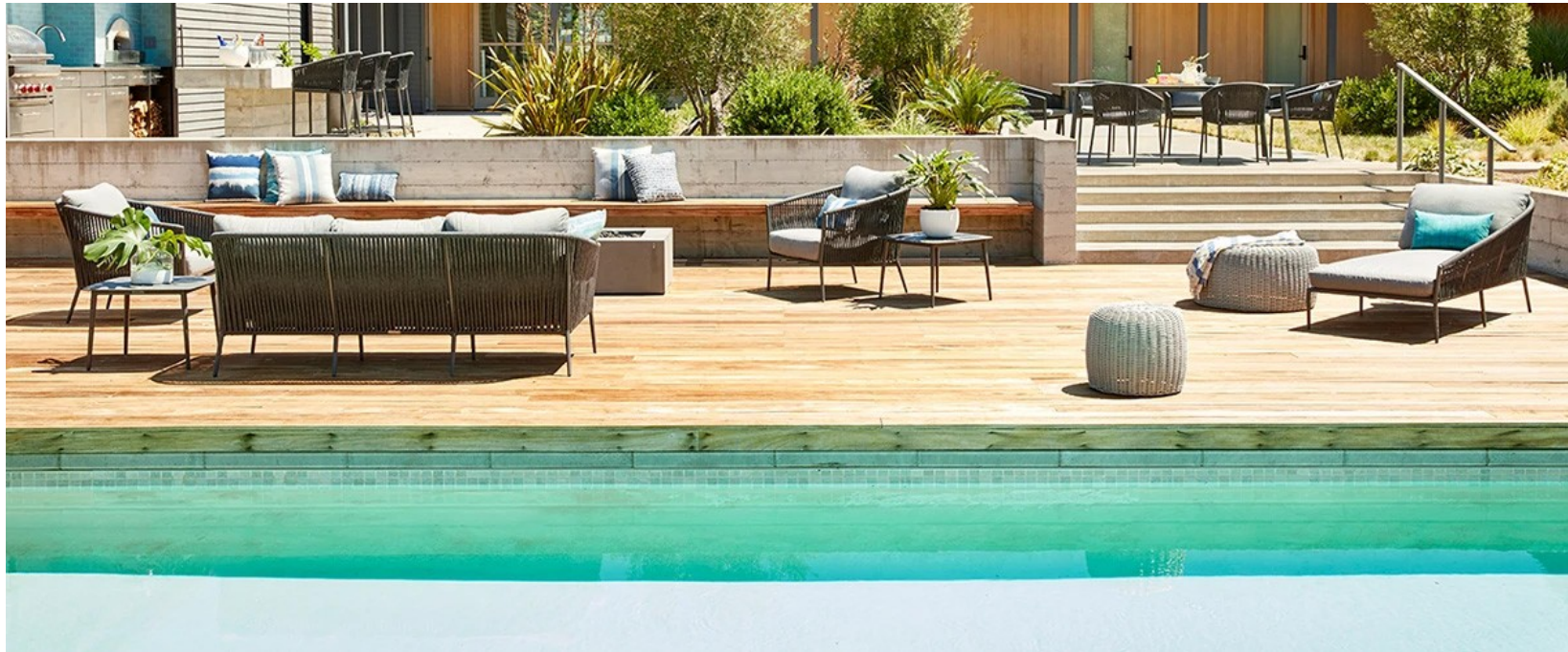
# Art Department



Abraham Latham

[www.art-dept.com](http://www.art-dept.com)

# Art Department



Abraham Latham

[www.art-dept.com](http://www.art-dept.com)



# Art Department



Abraham Latham

[www.art-dept.com](http://www.art-dept.com)

# Art Department



Abraham Latham

[www.art-dept.com](http://www.art-dept.com)



# Art Department



Abraham Latham

[www.art-dept.com](http://www.art-dept.com)



# Art Department



Abraham Latham

[www.art-dept.com](http://www.art-dept.com)



# Art Department



Abraham Latham

[www.art-dept.com](http://www.art-dept.com)



# Art Department



Abraham Latham

[www.art-dept.com](http://www.art-dept.com)



# Art Department



Abraham Latham

[www.art-dept.com](http://www.art-dept.com)



# Art Department



Abraham Latham

[www.art-dept.com](http://www.art-dept.com)



# Art Department



Abraham Latham

[www.art-dept.com](http://www.art-dept.com)



# Art Department



Abraham Latham

[www.art-dept.com](http://www.art-dept.com)



# Art Department



Abraham Latham

[www.art-dept.com](http://www.art-dept.com)



# Art Department



Abraham Latham

[www.art-dept.com](http://www.art-dept.com)



# Art Department



Abraham Latham

[www.art-dept.com](http://www.art-dept.com)

# Art Department



Abraham Latham

[www.art-dept.com](http://www.art-dept.com)



# Art Department



Abraham Latham

[www.art-dept.com](http://www.art-dept.com)

# Art Department



Abraham Latham

[www.art-dept.com](http://www.art-dept.com)



# Art Department



Abraham Latham

[www.art-dept.com](http://www.art-dept.com)

# Art Department



Abraham Latham

[www.art-dept.com](http://www.art-dept.com)



# Art Department



Abraham Latham

[www.art-dept.com](http://www.art-dept.com)



# Art Department



Abraham Latham

[www.art-dept.com](http://www.art-dept.com)



# Art Department



Abraham Latham

[www.art-dept.com](http://www.art-dept.com)



# Art Department



Abraham Latham

[www.art-dept.com](http://www.art-dept.com)



# Art Department



Abraham Latham

[www.art-dept.com](http://www.art-dept.com)

# Art Department



Abraham Latham

[www.art-dept.com](http://www.art-dept.com)



# Art Department



Abraham Latham

[www.art-dept.com](http://www.art-dept.com)



# Art Department



Abraham Latham

[www.art-dept.com](http://www.art-dept.com)



# Art Department



Abraham Latham

[www.art-dept.com](http://www.art-dept.com)



# Art Department



Abraham Latham

[www.art-dept.com](http://www.art-dept.com)



# Art Department



Abraham Latham

[www.art-dept.com](http://www.art-dept.com)



# Art Department



Abraham Latham

[www.art-dept.com](http://www.art-dept.com)



# Art Department



Abraham Latham

[www.art-dept.com](http://www.art-dept.com)



# Art Department



Abraham Latham

[www.art-dept.com](http://www.art-dept.com)



# Art Department



Abraham Latham

[www.art-dept.com](http://www.art-dept.com)



# Art Department



Abraham Latham

[www.art-dept.com](http://www.art-dept.com)



# Art Department



Abraham Latham

[www.art-dept.com](http://www.art-dept.com)



# Art Department



Abraham Latham

[www.art-dept.com](http://www.art-dept.com)



# Art Department



Abraham Latham

[www.art-dept.com](http://www.art-dept.com)



# Art Department



Abraham Latham

[www.art-dept.com](http://www.art-dept.com)



# Art Department



Abraham Latham

[www.art-dept.com](http://www.art-dept.com)



# Art Department



Abraham Latham

[www.art-dept.com](http://www.art-dept.com)



# Art Department



Abraham Latham

[www.art-dept.com](http://www.art-dept.com)



# Art Department



Abraham Latham

[www.art-dept.com](http://www.art-dept.com)



# Art Department



Abraham Latham

[www.art-dept.com](http://www.art-dept.com)



# Art Department



Abraham Latham

[www.art-dept.com](http://www.art-dept.com)



# Art Department



Abraham Latham

[www.art-dept.com](http://www.art-dept.com)



# Art Department



Abraham Latham

[www.art-dept.com](http://www.art-dept.com)



# Art Department



Abraham Latham

[www.art-dept.com](http://www.art-dept.com)



# Art Department



Abraham Latham

[www.art-dept.com](http://www.art-dept.com)



# Art Department



Abraham Latham

[www.art-dept.com](http://www.art-dept.com)



# Art Department



Abraham Latham

[www.art-dept.com](http://www.art-dept.com)



# Art Department



Abraham Latham

[www.art-dept.com](http://www.art-dept.com)



# Art Department



Abraham Latham

[www.art-dept.com](http://www.art-dept.com)



# Art Department



The advertisement depicts a man in a red shirt pouring tea from a golden teapot into a glass, while two women sit on plush cushions in a dimly lit, ornate lounge. A framed poster on the wall identifies the man as Matthew Newberry, a member since 2003. An American Express Business card is shown, also identifying Matthew Newberry. The card features the classic centurion logo and the text 'AMERICAN EXPRESS BUSINESS', 'MATTHEW NEWBERRY', 'NEWBERRY ACOUSTICS', and 'MEMBER SINCE 03'.

**AMERICAN EXPRESS**

**IT'S IN-THE-KNOW  
IN A CITY YOU DON'T.**

From secret souks to hidden tea rooms, wherever in the world business takes you, finding them is as easy as opening your Amex App. Another clever way American Express® has your back.

**AMERICAN EXPRESS BUSINESS**

**AMERICAN EXPRESS** *DON'T do business WITHOUT IT™*

Abraham Latham

[www.art-dept.com](http://www.art-dept.com)



# Art Department



Abraham Latham

[www.art-dept.com](http://www.art-dept.com)



# Art Department



The advertisement features a man, Kenneth Lee, sitting in a lounge chair, smiling and looking at his smartphone. He is wearing a red blazer and dark trousers. The background is a blurred lounge setting with other people and tables. A framed inset shows a close-up of Kenneth Lee with the text "AMERICAN EXPRESS" and "KENNETH LEE MEMBER SINCE 12". To the right, the headline reads "IT'S FEELING AT HOME IN 1,000 LOUNGES." followed by a sub-headline: "Find a space to call your own in over 1,000 lounges in 500 airports worldwide with your Platinum Card®. Another welcoming way American Express® has your back." Below this, two American Express cards are shown: a Business card and a Platinum Card. The bottom right corner features the American Express logo and the tagline "DON'T live life WITHOUT IT™".

AMERICAN EXPRESS

KENNETH LEE  
MEMBER SINCE 12

IT'S FEELING AT HOME  
IN 1,000 LOUNGES.

Find a space to call your own in over 1,000 lounges in  
500 airports worldwide with your Platinum Card®.  
Another welcoming way American Express® has your back.

AMERICAN EXPRESS  
BUSINESS

AMERICAN EXPRESS  
PLATINUM

AMERICAN EXPRESS

DON'T *live life* WITHOUT IT™

Abraham Latham

[www.art-dept.com](http://www.art-dept.com)



# Art Department



Abraham Latham

[www.art-dept.com](http://www.art-dept.com)



# Art Department

**IT'S FREEWHEELING  
FROM LUNCH  
INTO EVENING.**

Leave no sight unseen with a guaranteed 4pm late checkout at over 1,000 Fine Hotels & Resorts worldwide with your Platinum Card®. Another leisurely way American Express® has your back.

**AMERICAN EXPRESS**

DANIEL MARTIN  
MEMBER SINCE 03

**AMERICAN EXPRESS**  
BUSINESS

**AMERICAN EXPRESS**  
PLATINUM

**AMERICAN EXPRESS**  
DON'T *live life* WITHOUT IT™

Abraham Latham

[www.art-dept.com](http://www.art-dept.com)



# Art Department



Abraham Latham

[www.art-dept.com](http://www.art-dept.com)



# Art Department



Abraham Latham

[www.art-dept.com](http://www.art-dept.com)



# Art Department

**IT'S FREEWHEELING  
FROM LUNCH  
INTO EVENING.**

Leave no sight unseen with a guaranteed 4pm late checkout at over 1,000 Fine Hotels & Resorts worldwide with your Platinum Card®. Another leisurely way American Express® has your back.

**AMERICAN EXPRESS**

DANIEL MARTIN  
MEMBER SINCE 09

**AMERICAN EXPRESS**  
BUSINESS

**AMERICAN EXPRESS**  
PLATINUM

**AMERICAN EXPRESS**  
DON'T *live life* WITHOUT IT™

Abraham Latham

[www.art-dept.com](http://www.art-dept.com)



# Art Department



CAFE

DISTINCT BY DESIGN™

It's time appliances had a personality. Yours.

CAFEAPPLIANCES.COM

Abraham Latham

[www.art-dept.com](http://www.art-dept.com)



# Art Department



Abraham Latham

[www.art-dept.com](http://www.art-dept.com)



# Art Department



CAFÉ

DISTINCT BY DESIGN™

It's time appliances had a personality. Yours.

CAFEAPPLIANCES.COM

Abraham Latham

[www.art-dept.com](http://www.art-dept.com)



# Art Department



Abraham Latham

[www.art-dept.com](http://www.art-dept.com)



# Art Department



Abraham Latham

[www.art-dept.com](http://www.art-dept.com)



# Art Department



CAFE

DISTINCT BY DESIGN™

It's time appliances had a personality. Yours.

CAFEAPPLIANCES.COM

Abraham Latham

[www.art-dept.com](http://www.art-dept.com)



# Art Department



Abraham Latham

[www.art-dept.com](http://www.art-dept.com)



# Art Department



CAFE

DISTINCT BY DESIGN™

It's time appliances had a personality. Yours.

CAFEAPPLIANCES.COM

Abraham Latham

[www.art-dept.com](http://www.art-dept.com)



# Art Department



Abraham Latham

[www.art-dept.com](http://www.art-dept.com)



# Art Department



CAFE

DISTINCT BY DESIGN™

It's time appliances had a personality. Yours.

CAFEAPPLIANCES.COM

Abraham Latham

[www.art-dept.com](http://www.art-dept.com)



# Art Department



CAFE

DISTINCT BY DESIGN™

It's time appliances had a personality. Yours.

CAFEAPPLIANCES.COM

Abraham Latham

[www.art-dept.com](http://www.art-dept.com)



# Art Department



Abraham Latham

[www.art-dept.com](http://www.art-dept.com)



# Art Department



Abraham Latham

[www.art-dept.com](http://www.art-dept.com)



# Art Department



Abraham Latham

[www.art-dept.com](http://www.art-dept.com)



# Art Department



Abraham Latham

[www.art-dept.com](http://www.art-dept.com)



# Art Department



Abraham Latham

[www.art-dept.com](http://www.art-dept.com)



# Art Department



Abraham Latham

[www.art-dept.com](http://www.art-dept.com)



# Art Department



Abraham Latham

[www.art-dept.com](http://www.art-dept.com)



# Art Department



Abraham Latham

[www.art-dept.com](http://www.art-dept.com)



# Art Department



Abraham Latham

[www.art-dept.com](http://www.art-dept.com)



# Art Department



Abraham Latham

[www.art-dept.com](http://www.art-dept.com)



# Art Department



Abraham Latham

[www.art-dept.com](http://www.art-dept.com)



# Art Department



Abraham Latham

[www.art-dept.com](http://www.art-dept.com)



# Art Department



Abraham Latham

[www.art-dept.com](http://www.art-dept.com)



# Art Department



Abraham Latham

[www.art-dept.com](http://www.art-dept.com)



# Art Department



Abraham Latham

[www.art-dept.com](http://www.art-dept.com)



# Art Department



Abraham Latham

[www.art-dept.com](http://www.art-dept.com)

# Art Department



Abraham Latham

[www.art-dept.com](http://www.art-dept.com)



# Art Department



Abraham Latham

[www.art-dept.com](http://www.art-dept.com)

# Art Department



Abraham Latham

[www.art-dept.com](http://www.art-dept.com)



# Art Department



Abraham Latham

[www.art-dept.com](http://www.art-dept.com)

# Art Department



Abraham Latham

[www.art-dept.com](http://www.art-dept.com)



# Art Department



Abraham Latham

[www.art-dept.com](http://www.art-dept.com)



# Art Department



Abraham Latham

[www.art-dept.com](http://www.art-dept.com)



# Art Department



Abraham Latham

[www.art-dept.com](http://www.art-dept.com)

# Art Department



Abraham Latham

[www.art-dept.com](http://www.art-dept.com)



# Art Department



Abraham Latham

[www.art-dept.com](http://www.art-dept.com)

# Art Department



Abraham Latham

[www.art-dept.com](http://www.art-dept.com)



# Art Department



Abraham Latham

[www.art-dept.com](http://www.art-dept.com)



# Art Department



Abraham Latham

[www.art-dept.com](http://www.art-dept.com)



# Art Department



Abraham Latham

[www.art-dept.com](http://www.art-dept.com)



# Art Department



Abraham Latham

[www.art-dept.com](http://www.art-dept.com)



# Art Department



**TONIGHT FEELS LIKE A JAPANESE  
INDIAN KIND OF NIGHT.**

**GRUBHUB™**  
YOUR FOOD HAS ARRIVED

Abraham Latham

[www.art-dept.com](http://www.art-dept.com)

# Art Department



Abraham Latham

[www.art-dept.com](http://www.art-dept.com)



# Art Department

A photograph of a man with curly hair and a beard, wearing a black t-shirt, sitting at a red table and eating a pie with berries. He is holding a fork and looking down at the food. In the background, there is a brick wall and a stack of vinyl records. A red square with the letters 'GH' is in the top right corner of the photo.

© GrubHub 2014

GH

**MMM, JUST LIKE  
MOM USED TO ORDER.**

**GRUBHUB™**  
YOUR FOOD HAS ARRIVED

Abraham Latham

[www.art-dept.com](http://www.art-dept.com)

# Art Department



Abraham Latham

[www.art-dept.com](http://www.art-dept.com)



# Art Department

A close-up photograph of a person's arm and hand, wearing a black Samsung Gear S3 frontier smartwatch with a red strap. The person is holding a white paddle with a yellow blade, splashing water. The background is a blurred blue and white, suggesting a boat or water. The Samsung logo is in the top left, and the product name 'Gear S3 frontier' is in the top right. At the bottom right, the slogan 'Timeless outside. Revolutionary inside.' is followed by a list of features: 'Built-in speaker · Stand-alone GPS · Water resistant · Altimeter & Barometer'. At the bottom left, there are two small lines of text: '• Orange red watch band sold separately' and '• Water-resistant (IP68; tested in up to 15 meters of fresh water for up to 30 minutes)'.

**SAMSUNG**

**Gear S3 frontier**

**Timeless outside. Revolutionary inside.**  
Built-in speaker · Stand-alone GPS · Water resistant · Altimeter & Barometer

• Orange red watch band sold separately  
• Water-resistant (IP68; tested in up to 15 meters of fresh water for up to 30 minutes)

Abraham Latham

[www.art-dept.com](http://www.art-dept.com)

# Art Department



Abraham Latham

[www.art-dept.com](http://www.art-dept.com)



# Art Department



Abraham Latham

[www.art-dept.com](http://www.art-dept.com)

# Art Department



Abraham Latham

[www.art-dept.com](http://www.art-dept.com)



# Art Department



Abraham Latham

[www.art-dept.com](http://www.art-dept.com)

# Art Department



Abraham Latham

[www.art-dept.com](http://www.art-dept.com)



# Art Department



Abraham Latham

[www.art-dept.com](http://www.art-dept.com)

# Art Department

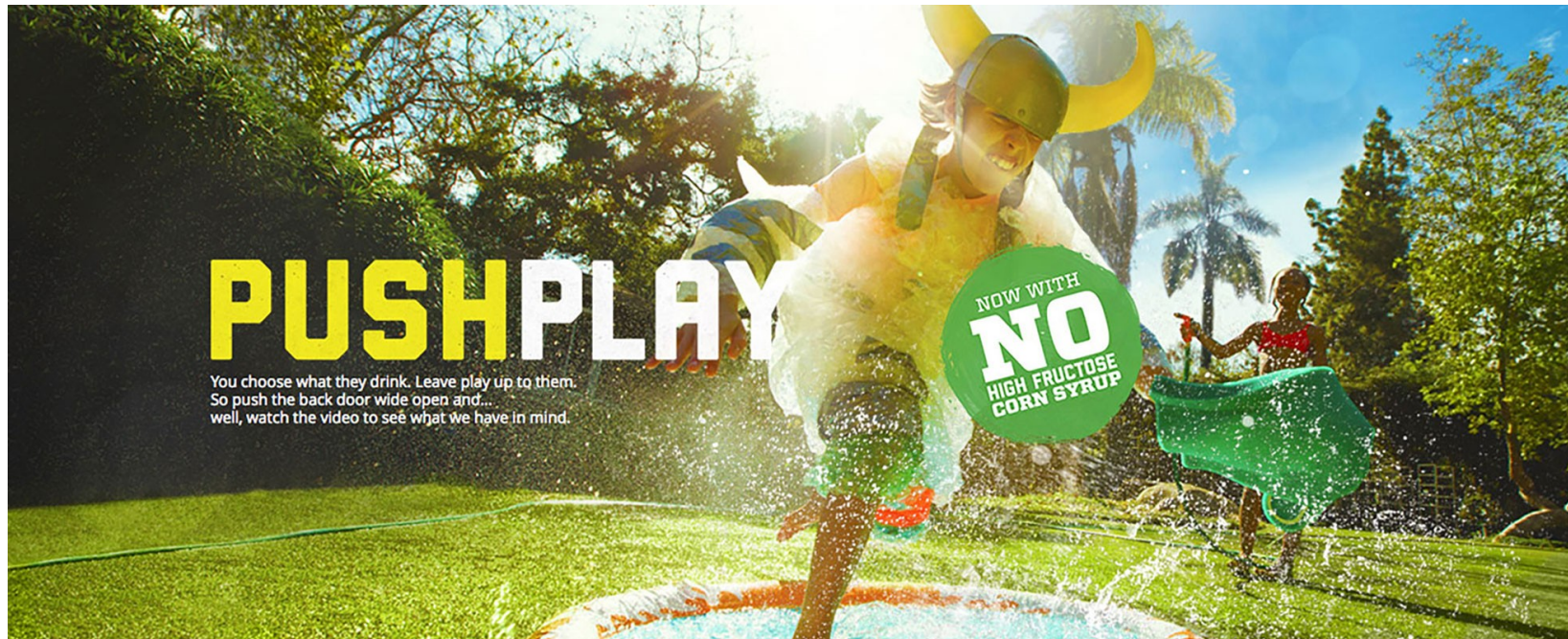


Abraham Latham

[www.art-dept.com](http://www.art-dept.com)



# Art Department



Abraham Latham

[www.art-dept.com](http://www.art-dept.com)



# Art Department



Abraham Latham



# Art Department



Abraham Latham

[www.art-dept.com](http://www.art-dept.com)



# Art Department



Abraham Latham

[www.art-dept.com](http://www.art-dept.com)



# Art Department



Abraham Latham

[www.art-dept.com](http://www.art-dept.com)

# Art Department

SUN VALLEY PARKA.  
650 FILL PREMIUM DOWN.  
TEMPERATURE RATED TO -30°F.  
FROM EDDIE BAUER,  
THE INVENTOR OF THE DOWN JACKET.

**Eddie Bauer**  
LIVE YOUR ADVENTURE®



TEMPERATURE RATINGS ARE BASED ON A CONTROLLED LABORATORY TEST, USING LOW TO MODERATE ACTIVITY LEVELS. THE SUN VALLEY MARKA RATED FROM 30° (LOW ACTIVITY) TO -30° (MOD. ACTIVITY), ALSO CONSIDER YOUR SENSITIVITY TO COLD AND NO-DRILL TIME OF EXPOSURE ACTIVITY LEVEL AND USE OF LUBRIC.

# Abraham Latham

www.art-dept.com



# Art Department



Abraham Latham

[www.art-dept.com](http://www.art-dept.com)

# Art Department



Abraham Latham

[www.art-dept.com](http://www.art-dept.com)



# Art Department



Abraham Latham

[www.art-dept.com](http://www.art-dept.com)

# Art Department



Abraham Latham

[www.art-dept.com](http://www.art-dept.com)



# Art Department



Abraham Latham

[www.art-dept.com](http://www.art-dept.com)



# Art Department



Abraham Latham

[www.art-dept.com](http://www.art-dept.com)



# Art Department



Abraham Latham

[www.art-dept.com](http://www.art-dept.com)



# Art Department



Abraham Latham

[www.art-dept.com](http://www.art-dept.com)



# Art Department



Abraham Latham

[www.art-dept.com](http://www.art-dept.com)

# Art Department



Abraham Latham

[www.art-dept.com](http://www.art-dept.com)



# Art Department



Abraham Latham

[www.art-dept.com](http://www.art-dept.com)



# Art Department



Abraham Latham

[www.art-dept.com](http://www.art-dept.com)



# Art Department



Abraham Latham

[www.art-dept.com](http://www.art-dept.com)



# Art Department



Abraham Latham

[www.art-dept.com](http://www.art-dept.com)



# Art Department



Abraham Latham

[www.art-dept.com](http://www.art-dept.com)



# Art Department



Abraham Latham

[www.art-dept.com](http://www.art-dept.com)



# Art Department



Abraham Latham

[www.art-dept.com](http://www.art-dept.com)

# Art Department



Abraham Latham

[www.art-dept.com](http://www.art-dept.com)



# Art Department



**#hellowork**

***Snooze no more.***

When work is something you look forward to, the alarm clock gets a whole lot friendlier. Because when your employees look forward to their jobs, what they produce can be truly inspiring. ADP's workforce solutions help you craft a more engaged and efficient workplace.

Visit [adp.com/hellowork](http://adp.com/hellowork) and see how we can provide a more human resource for your business.

ADP and the ADP logo are registered trademarks of ADP, LLC.  
ADP – A more human resource. is a service mark of ADP, LLC. Copyright © 2015 ADP, LLC.

**ADP**  
A more human resource.™

HR Solutions | Payroll | Good Job

Abraham Latham

[www.art-dept.com](http://www.art-dept.com)

# Art Department



**#hellowork**

*There's nothing like the smell of compliance in the morning.*

Even before that first pot of caffeinated goodness, we've got tax and ACA regulation on the brain. Because at ADP, we're always looking for new ways to pair innovative technology and human expertise to help you navigate risks associated with compliance. That way you can start your day by focusing on what's important – whole milk or skim.

Visit [adp.com/hellowork](http://adp.com/hellowork) and see how we can provide a more human resource for your business.

ADP and the ADP logo are registered trademarks of ADP, LLC.  
ADP – A more human resource. is a service mark of ADP, LLC. Copyright © 2015 ADP, LLC.

**ADP**  
A more human resource.™

HR Solutions | Payroll | Good Job

Abraham Latham

[www.art-dept.com](http://www.art-dept.com)



# Art Department



Abraham Latham

[www.art-dept.com](http://www.art-dept.com)



# Art Department



A woman is seated at a restaurant table, holding a Samsung Galaxy Tab Pro tablet. The tablet screen displays a news article about city events, a calendar for February 2014, and an inbox with messages from Stephanie Jones and Chris Smith. The background shows a blurred restaurant setting with flowers and other diners. The text "SAMSUNG" is in the top left, and "THE NEXT BIG THING IS HERE™" is written vertically on the right. The "BEST BUY" logo is in the bottom left, and "GALAXY Tab PRO" is in the bottom right.

**SAMSUNG**

THE NEXT

BIG

THING

IS HERE™

**BEST BUY**

GALAXY Tab PRO

Abraham Latham

[www.art-dept.com](http://www.art-dept.com)



# Art Department



Abraham Latham

[www.art-dept.com](http://www.art-dept.com)



# Art Department



Abraham Latham

[www.art-dept.com](http://www.art-dept.com)



# Art Department



Abraham Latham

[www.art-dept.com](http://www.art-dept.com)

# Art Department



Abraham Latham

[www.art-dept.com](http://www.art-dept.com)



# Art Department



Abraham Latham

[www.art-dept.com](http://www.art-dept.com)

# Art Department



★ *Camp out on the beach*

Abraham Latham

[www.art-dept.com](http://www.art-dept.com)



# Art Department



★ *Sample the local delicacies*

Abraham Latham

[www.art-dept.com](http://www.art-dept.com)

# Art Department



★ *Mix with the locals*

Abraham Latham

[www.art-dept.com](http://www.art-dept.com)



# Art Department

★ *Learn to surf*



Abraham Latham

[www.art-dept.com](http://www.art-dept.com)

# Art Department



Abraham Latham

[www.art-dept.com](http://www.art-dept.com)



# Art Department



Abraham Latham

[www.art-dept.com](http://www.art-dept.com)

# Art Department



Abraham Latham

[www.art-dept.com](http://www.art-dept.com)



# Art Department



Abraham Latham

[www.art-dept.com](http://www.art-dept.com)



# Art Department



Abraham Latham

[www.art-dept.com](http://www.art-dept.com)



# Art Department



Abraham Latham

[www.art-dept.com](http://www.art-dept.com)

# Art Department



Abraham Latham

[www.art-dept.com](http://www.art-dept.com)



# Art Department



Abraham Latham

[www.art-dept.com](http://www.art-dept.com)

# Art Department

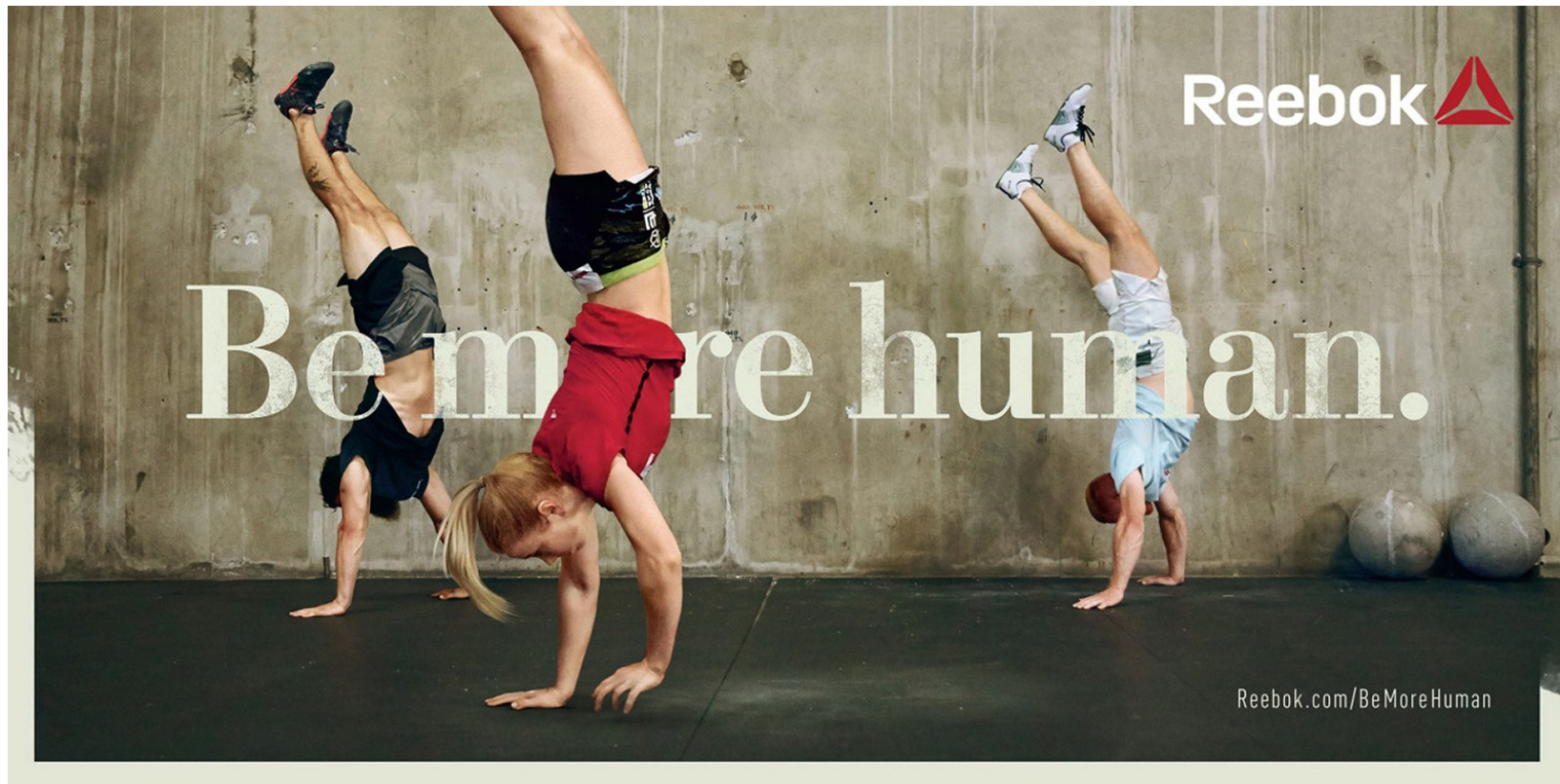


Abraham Latham

[www.art-dept.com](http://www.art-dept.com)



# Art Department



Abraham Latham

[www.art-dept.com](http://www.art-dept.com)

# Art Department



Abraham Latham

[www.art-dept.com](http://www.art-dept.com)



# Art Department

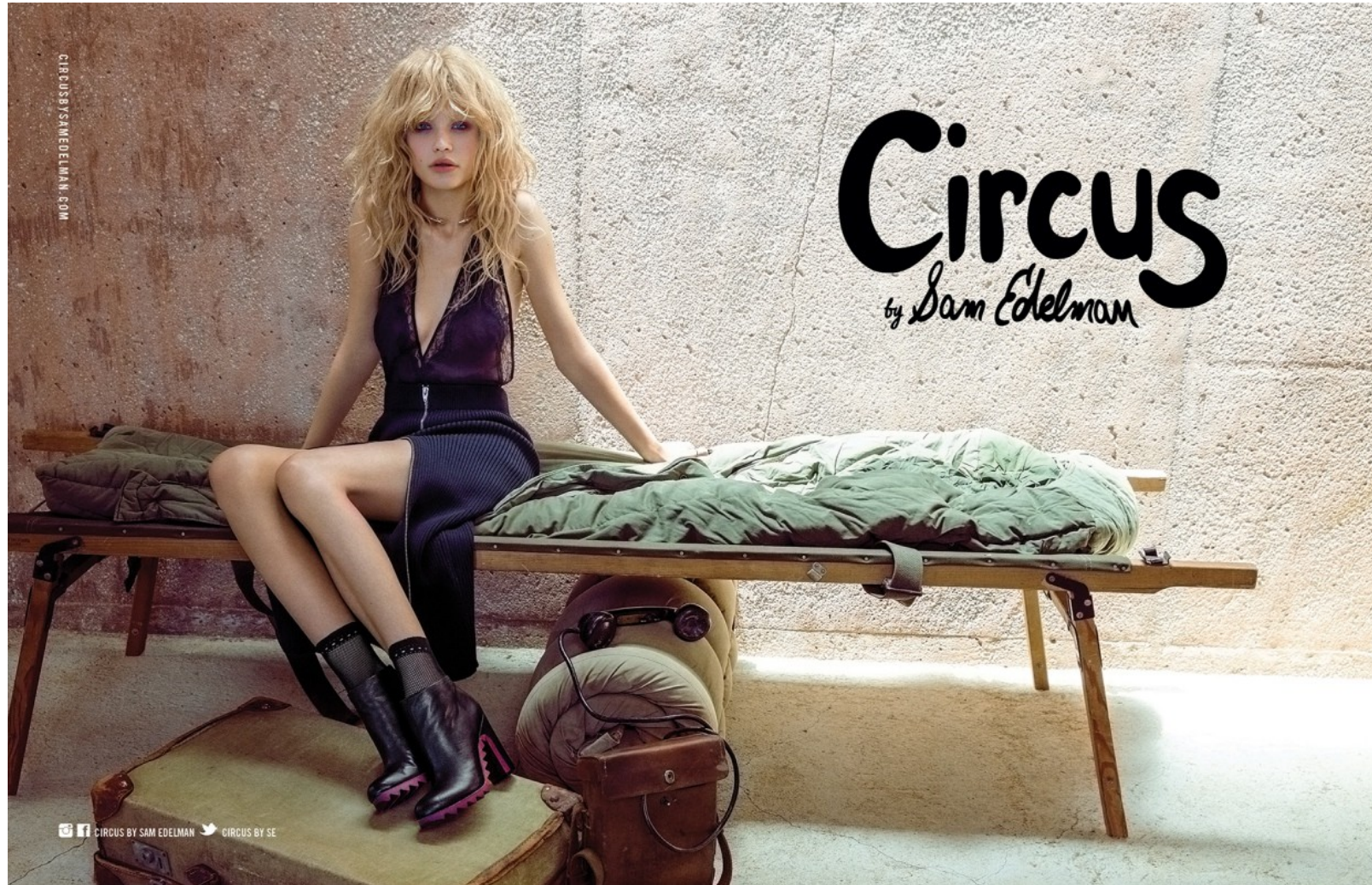


Abraham Latham

[www.art-dept.com](http://www.art-dept.com)



# Art Department

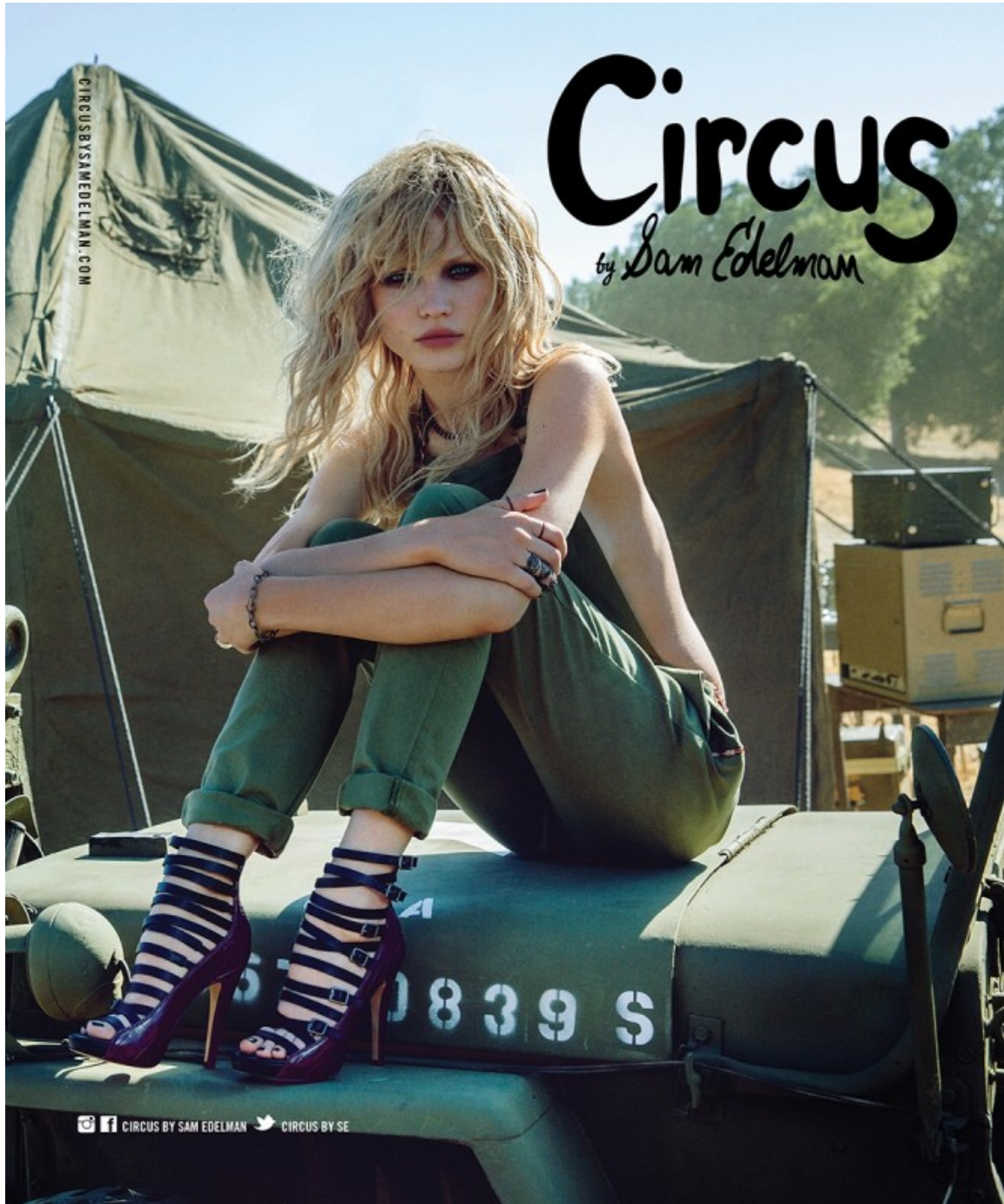


Abraham Latham

[www.art-dept.com](http://www.art-dept.com)



# Art Department



Abraham Latham

[www.art-dept.com](http://www.art-dept.com)

# Art Department



Abraham Latham

[www.art-dept.com](http://www.art-dept.com)



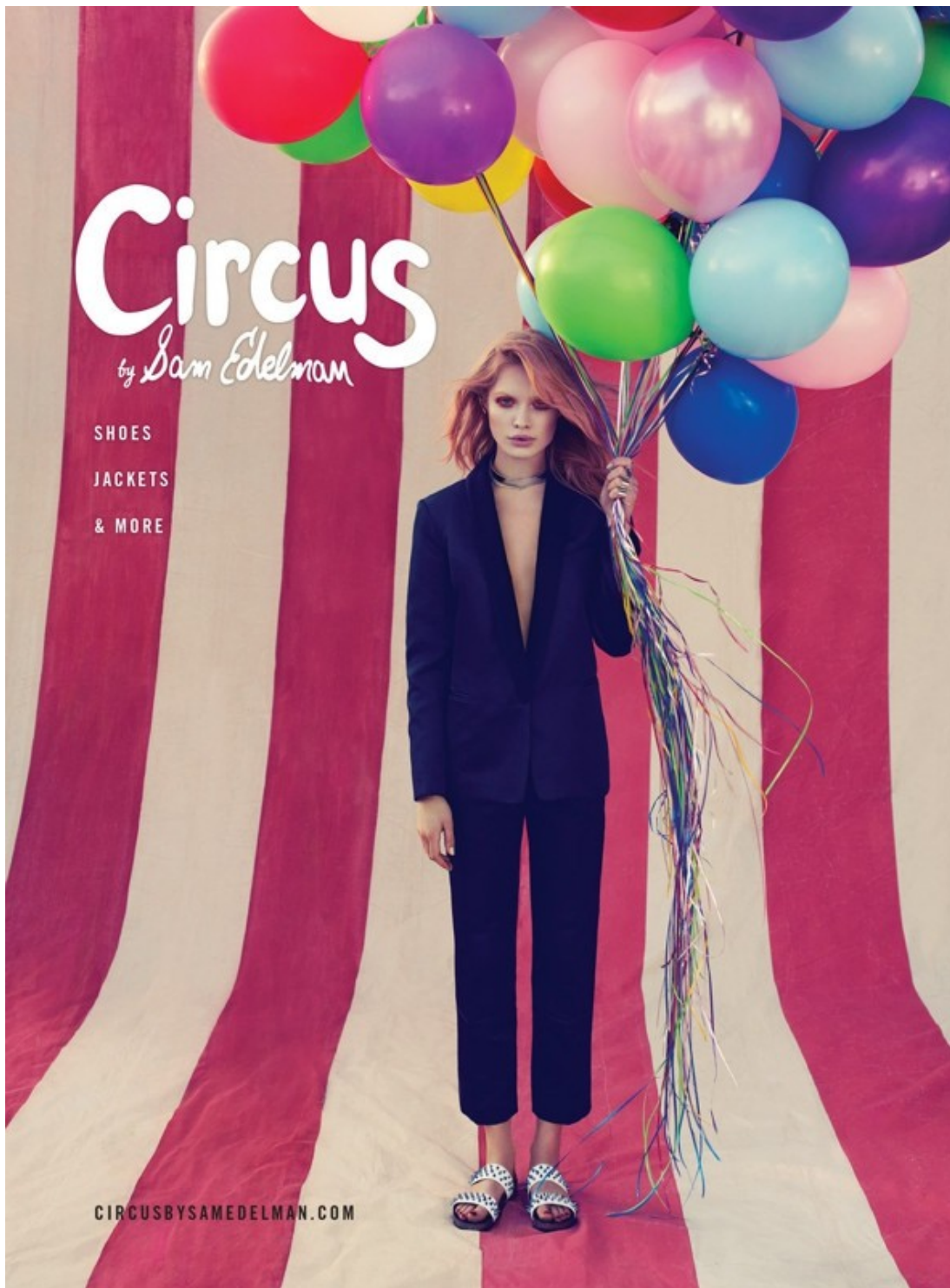
# Art Department



Abraham Latham

[www.art-dept.com](http://www.art-dept.com)

# Art Department



Abraham Latham

[www.art-dept.com](http://www.art-dept.com)



# Art Department



Abraham Latham

[www.art-dept.com](http://www.art-dept.com)



# Art Department

A photograph of Taylor Swift sitting on a large, colorful arrangement of speakers. She is wearing a light blue button-down shirt, denim shorts, and red Keds sneakers. She is holding a pair of sunglasses in her left hand. The speakers are in various colors (red, yellow, green, blue) and sizes, creating a vibrant, musical backdrop. The text "Taylor Swift" is written vertically on the left side. The phrase "soak up EVERY MOMENT" is prominently displayed in the lower right. At the bottom, it says "AVAILABLE AT JOURNEYS" and the Keds logo is in the bottom right corner.

Taylor Swift

soak up  
**EVERY  
MOMENT**

WORDS TO LOVE BY @ GLGROSSI.  
SHARE WHAT'S IN YOUR HEART AT  
[KEDS.COM/BRAVEHEARTS](https://www.keds.com/bravehearts).

AVAILABLE AT JOURNEYS

**Keds®**

Abraham Latham

[www.art-dept.com](http://www.art-dept.com)



# Art Department



Abraham Latham

[www.art-dept.com](http://www.art-dept.com)

# Art Department



Abraham Latham

[www.art-dept.com](http://www.art-dept.com)



# Art Department



Abraham Latham

[www.art-dept.com](http://www.art-dept.com)

# Art Department



Abraham Latham

[www.art-dept.com](http://www.art-dept.com)



# Art Department



Abraham Latham

[www.art-dept.com](http://www.art-dept.com)



# Art Department



Abraham Latham

[www.art-dept.com](http://www.art-dept.com)



# Art Department



Abraham Latham

[www.art-dept.com](http://www.art-dept.com)

# Art Department

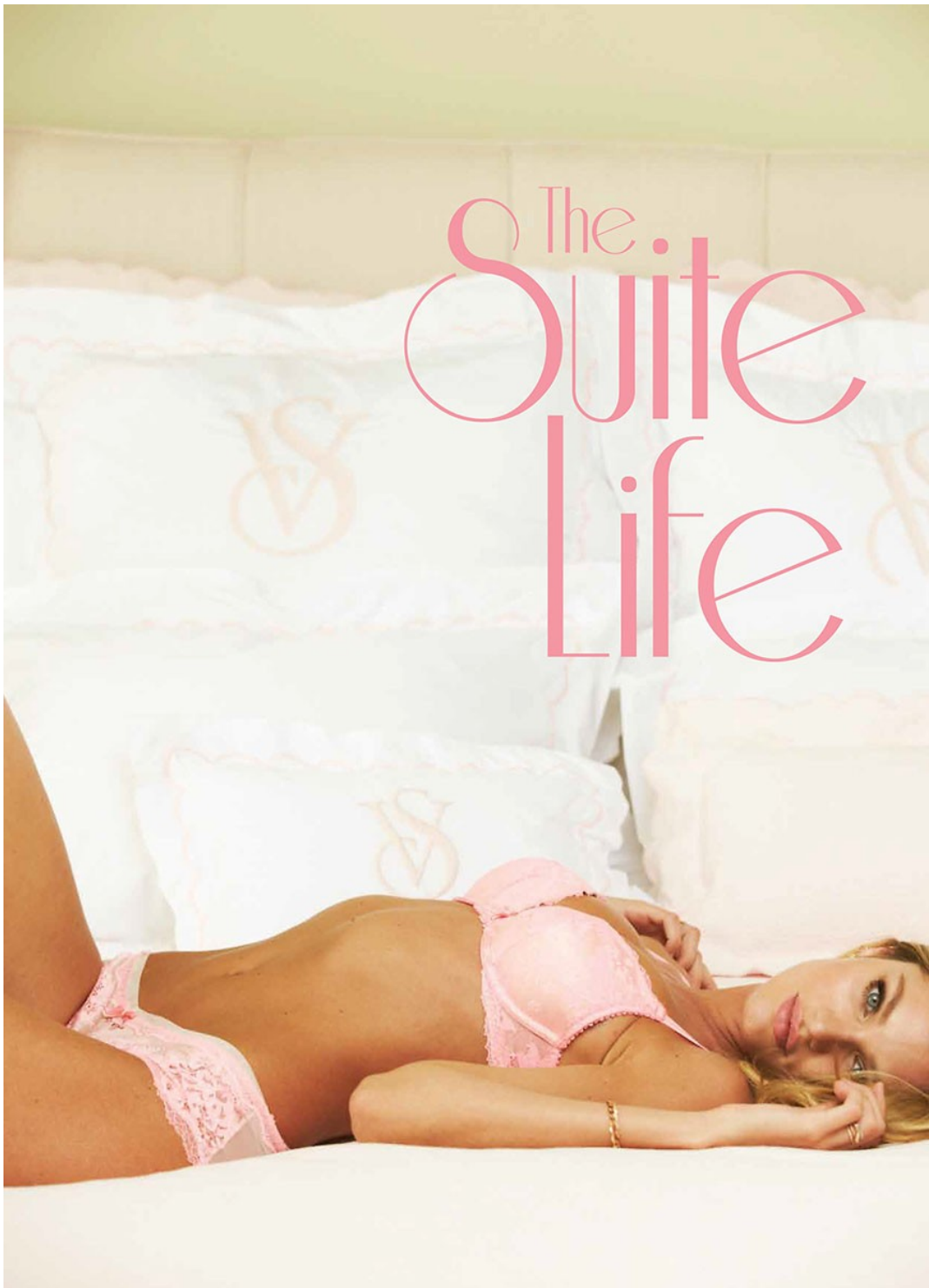


Abraham Latham

[www.art-dept.com](http://www.art-dept.com)



# Art Department



Abraham Latham

[www.art-dept.com](http://www.art-dept.com)

# Art Department



Abraham Latham

[www.art-dept.com](http://www.art-dept.com)



# Art Department



Abraham Latham

[www.art-dept.com](http://www.art-dept.com)

# Art Department



Abraham Latham

[www.art-dept.com](http://www.art-dept.com)



# Art Department



**BONOBOS SUITS**  
*Lighten Up*

Summer is made for bold statements, but it's also hot as the dickens. When it comes to suits, the answer is light, breathable fabrics that can keep their cool in the heat. To get your wardrobe ready, we have options in seersucker, lightweight Italian wool, cotton twill, and yes, even cotton linen – check out the Tremont suit on the front cover.

Left to Right: SUIT: The Drayton - Navy, Loro Piana wool, \$920. Jacket \$425, pants \$295, available separately. Guideshop exclusive. SHIRT: Gentleman Collar, see page 2. TIE: Wellfleet - Pink, 100% silk, \$48. / SUIT: The Beauregard - Blue, see page 6. SHIRT: Fall River, see page 6. TIE: Rodanthe Bowtie - Green, 100% cotton, \$58. SHOES: Grenson Tyler - Brown, calf leather, \$345. / SUIT: The Beauregard - White, see page 6. SHIRT: Rhodes Collar - Turquoise, 100% cotton Oxford, \$78. Available in Slim & Standard FIT. TIE: Duxbury - Navy, silk twill, \$48. SHOE: Grenson x Bonobos Spectator - Brown, suede & leather, \$495.

On the Cover: SUIT: The Tremont - Grey, cotton linen, \$448. Jacket \$298, pants \$150, available separately. Also available in Stone & Navy. SHIRT: Gingham, Summer Weight - Blue, 100% cotton poplin, \$78. Available in Slim & Standard FIT. POKET SQUARE: The Madison Square - Purple, 100% linen, \$32. SHOES: Tretorn Nylite - White, canvas, \$40.

## Abraham Latham

[www.art-dept.com](http://www.art-dept.com)



# Art Department



SUIT: The Fairfax - Grey, 100% cotton, \$425. Jacket \$275, pants \$150, available separately. Also available in Khaki & Navy. SHIRT: J. Hancock, Summer Weight, 100% cotton poplin, \$78. Available in Slim & Standard Fit. POCKET SQUARE: Madison Square - Blue, 100% linen, \$32. BELT: Stretto - Black, leather, \$90. SHOES: Grenson Ellery Double Monk Brogue - Black, leather, \$370.

Opposite Page: SUIT: The Fairfax - Khaki, see above. SHIRT: Ging Richard, Green, 100% cotton poplin, \$78. Available in Slim & Standard Fit. TIE: Wolfboro Bowtie - Blue, 100% cotton chambray, \$58. POCKET SQUARE: The Anchor Chief, 100% cotton, \$42.

## Abraham Latham

[www.art-dept.com](http://www.art-dept.com)



# Art Department



Abraham Latham

[www.art-dept.com](http://www.art-dept.com)

# Art Department



**SUMMER  
BETTER  
than  
THE REST**

It's pretty much an indisputable scientific fact: most of life's best moments happen during summer. And we want you to look your best for every single one of them. So let us take care of the style part – the linen suits, the summer weight shirts, the new jeans you'll practically live in. You've got other things to worry about. Because that rooftop rager isn't going to DJ itself. Somebody's got to go black-tie to Shakespeare in the Park. And world-class cannonball champions aren't born. They're made.

On the Cover: SUIT: The Tremont - Grey, cotton linen, \$448. Jacket \$198, pants \$156, available separately. Also available in Stone & Navy. SHIRT: Gingham, Summer Weight - Blue, 100% cotton poplin, \$78. Available in Slim & Standard Fit. POCKET SQUARE: The Madison Square - Purple, 100% linen, \$32. SHOES: Tretorn Nylite - White, canvas, \$48.

This Page, Left to Right: See page 8. / See page 12.

2 | 877.296.7737

BONOBOS.COM / 3

## Abraham Latham

[www.art-dept.com](http://www.art-dept.com)



# Art Department

## The Foundation Suit

Cut to perfection from lightweight Italian wool, this suit is sharp as a razor and comes in equally handy. It's the solid, year-round suit every guy needs at the ready for work and for play.

SUIT: The Foundation - Navy, see page 8.

SHIRT: Gentleman Collar - Blue & White Bengal Stripe, 100% Italian cotton, \$138. Available in Slim & Standard Fit. Neck & sleeve sizing.

TIE: Wolfeboro - Blue, 100% cotton chambray, \$68.

TIE CLIP: Postmodern Tie Clip - Blue, acrylic, \$25.



## Abraham Latham

[www.art-dept.com](http://www.art-dept.com)

# Art Department



**The Foundation Suit**

SUIT: The Foundation - Light Grey, 100% Marzotto® Italian wool, \$685. Jacket \$460, pants \$225, available separately. Also available in Charcoal & Navy. SHIRT: Gentleman Collar - White, 100% Italian cotton, \$138. Available in Slim & Standard Fit. Neck & sleeve sizing. TIE: Cape Hatteras - Blue, 100% cotton, \$68. SHOE: Grenson Tyler - Brown, leather, \$345. POCKET SQUARE: Bedford Square - Green, 100% cotton, \$32.

*Opposite Page:* SUIT: The Foundation - Navy, see above. SHIRT: Gentleman Collar - Turquoise Gingham, 100% Italian cotton, \$138. Available in Slim & Standard Fit. Neck & sleeve sizing. TIE: Cape May - Navy, cotton silk blend, \$78. TIE CLIP: Postmodern Tie Clip - Red, acrylic, \$25. BELT: Fifth Degree - Black, Italian leather, \$98. SHOES: Grenson Dylan Wing Tip - Black, leather, \$335.

Try this on at a  
Guideshop  
[bonobos.com/guideshop](http://bonobos.com/guideshop)

Abraham Latham

[www.art-dept.com](http://www.art-dept.com)



# Art Department

## **The Fairfax Suit**

To beat the heat on a daily basis, you have two options: tons of soft serve, or a cotton twill suit. We suggest the latter – it's casual enough for everyday wear, but still dressy enough for special occasions.

Oh, and it won't melt on your shoes either.



## Abraham Latham

[www.art-dept.com](http://www.art-dept.com)

# Art Department



Abraham Latham

[www.art-dept.com](http://www.art-dept.com)



# Art Department



Abraham Latham

[www.art-dept.com](http://www.art-dept.com)

# Art Department



Abraham Latham

[www.art-dept.com](http://www.art-dept.com)



# Art Department



Abraham Latham

[www.art-dept.com](http://www.art-dept.com)

# Art Department

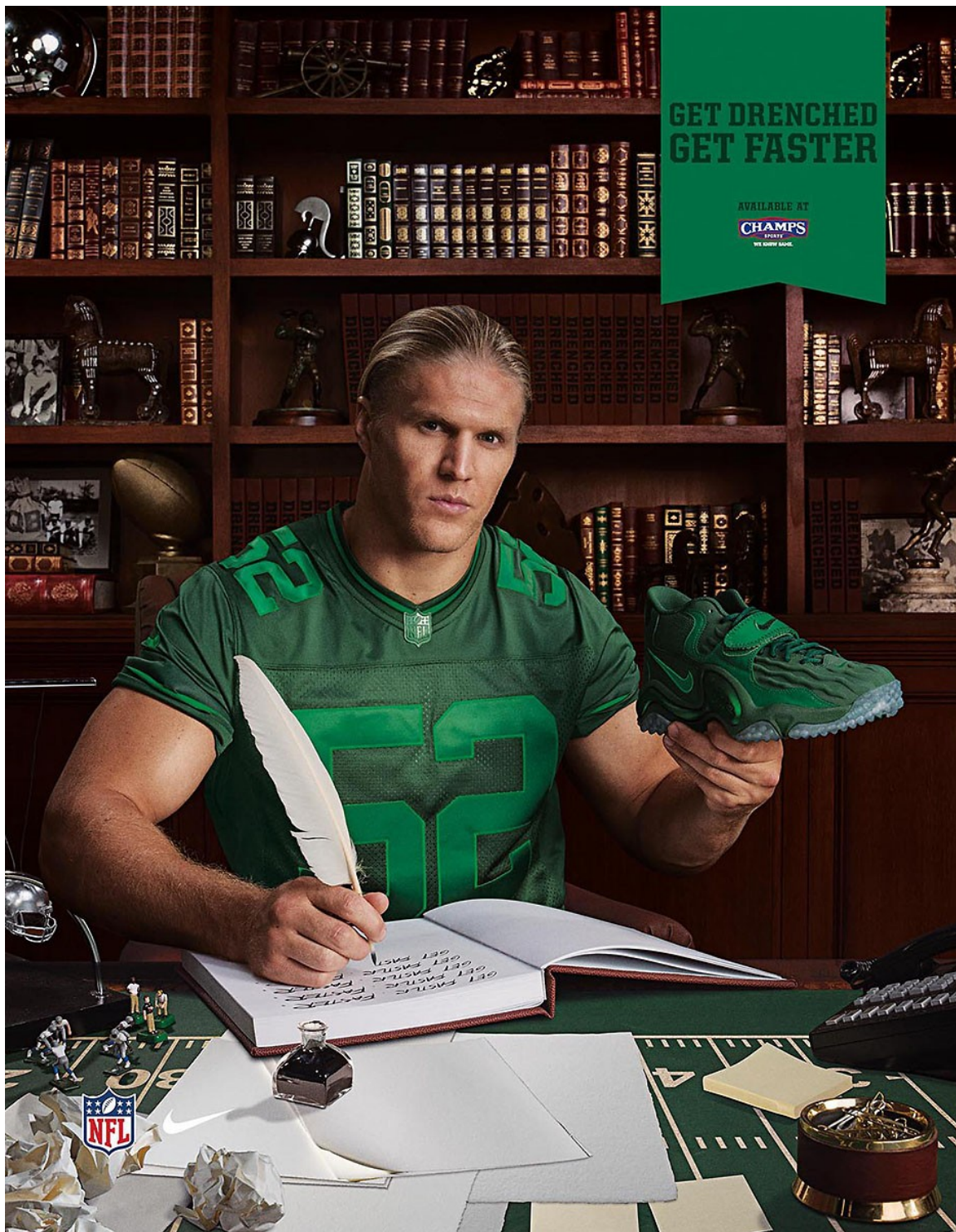


Abraham Latham

[www.art-dept.com](http://www.art-dept.com)



# Art Department



Abraham Latham

[www.art-dept.com](http://www.art-dept.com)

# Art Department



*The sea is my land.*

Abraham Latham

[www.art-dept.com](http://www.art-dept.com)



# Art Department



*The sea is my land.*

Abraham Latham

[www.art-dept.com](http://www.art-dept.com)

# Art Department



Abraham Latham

[www.art-dept.com](http://www.art-dept.com)



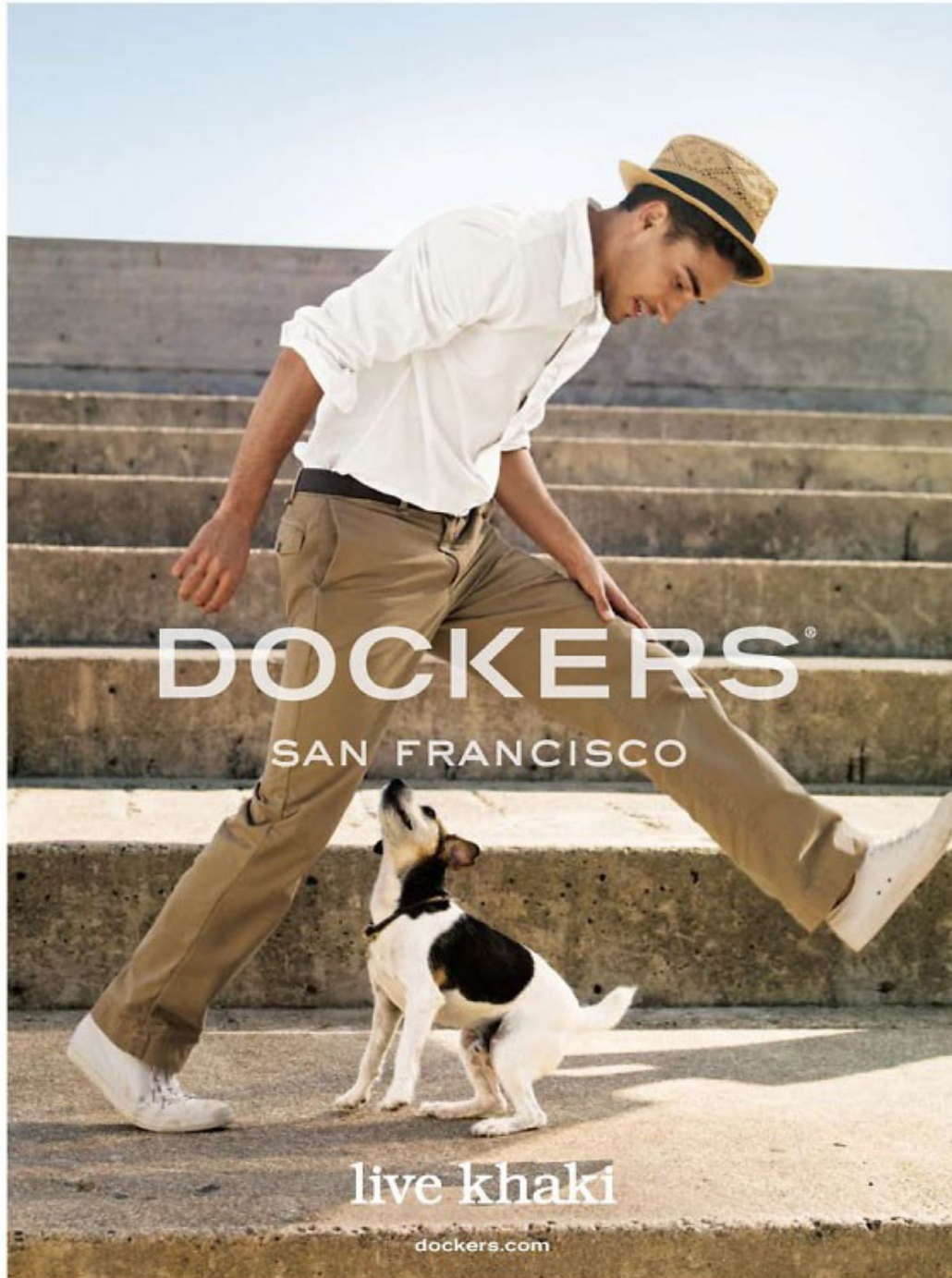
# Art Department



Abraham Latham

[www.art-dept.com](http://www.art-dept.com)

# Art Department



Abraham Latham

[www.art-dept.com](http://www.art-dept.com)



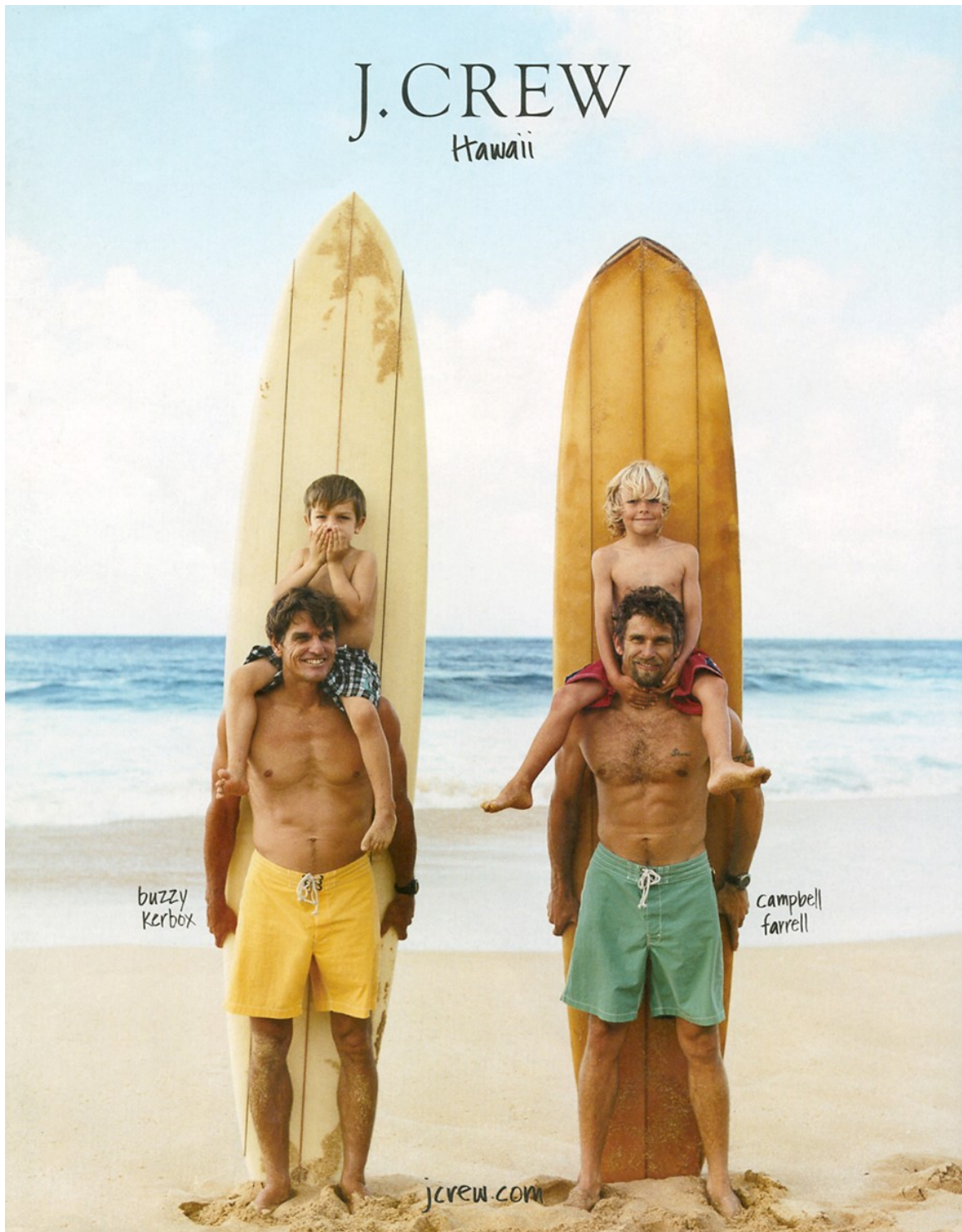
# Art Department



Abraham Latham

[www.art-dept.com](http://www.art-dept.com)

# Art Department



Abraham Latham

[www.art-dept.com](http://www.art-dept.com)



# Art Department

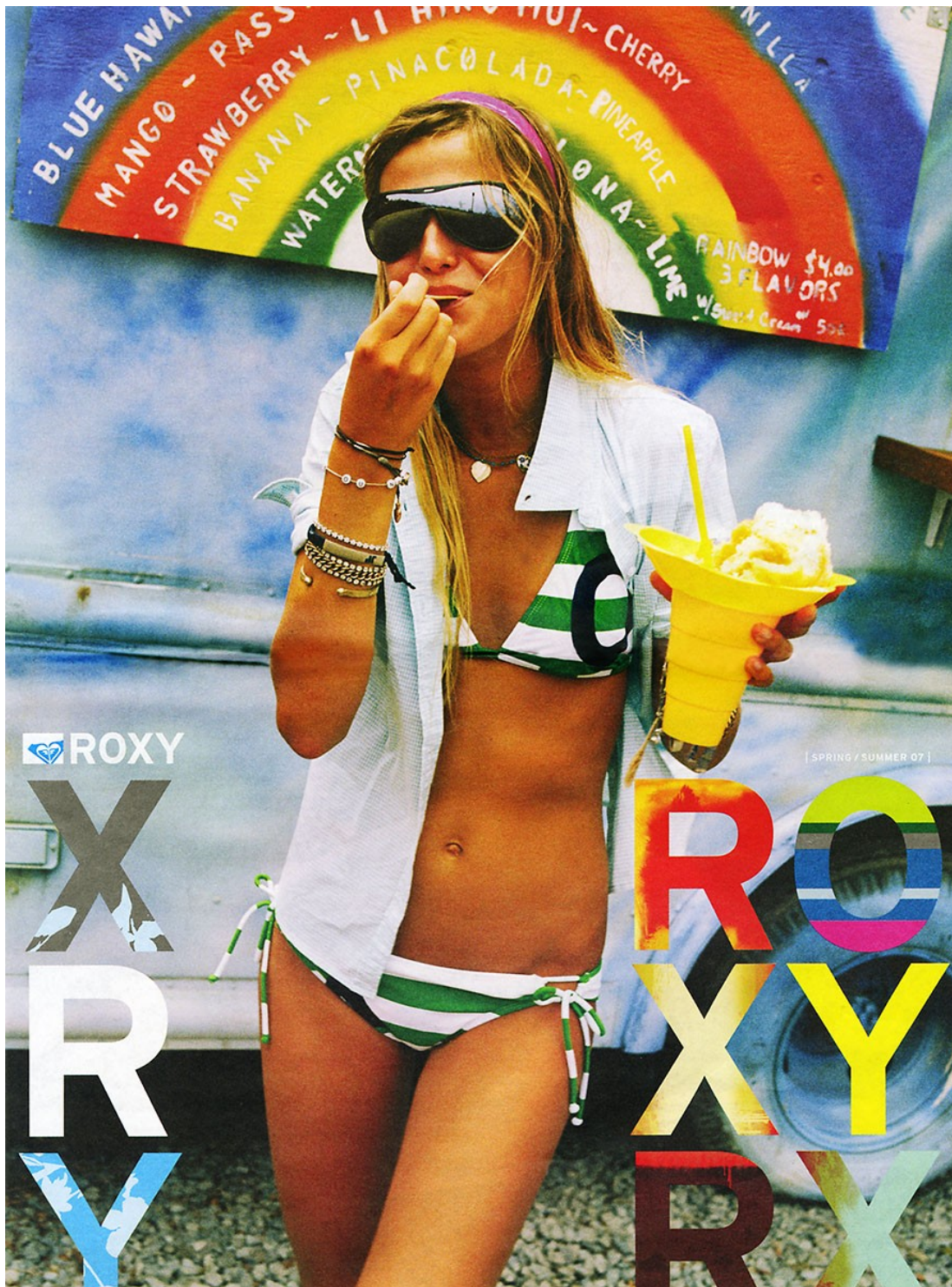


Abraham Latham

[www.art-dept.com](http://www.art-dept.com)



# Art Department



Abraham Latham

[www.art-dept.com](http://www.art-dept.com)



# Art Department



Abraham Latham

[www.art-dept.com](http://www.art-dept.com)



# Art Department

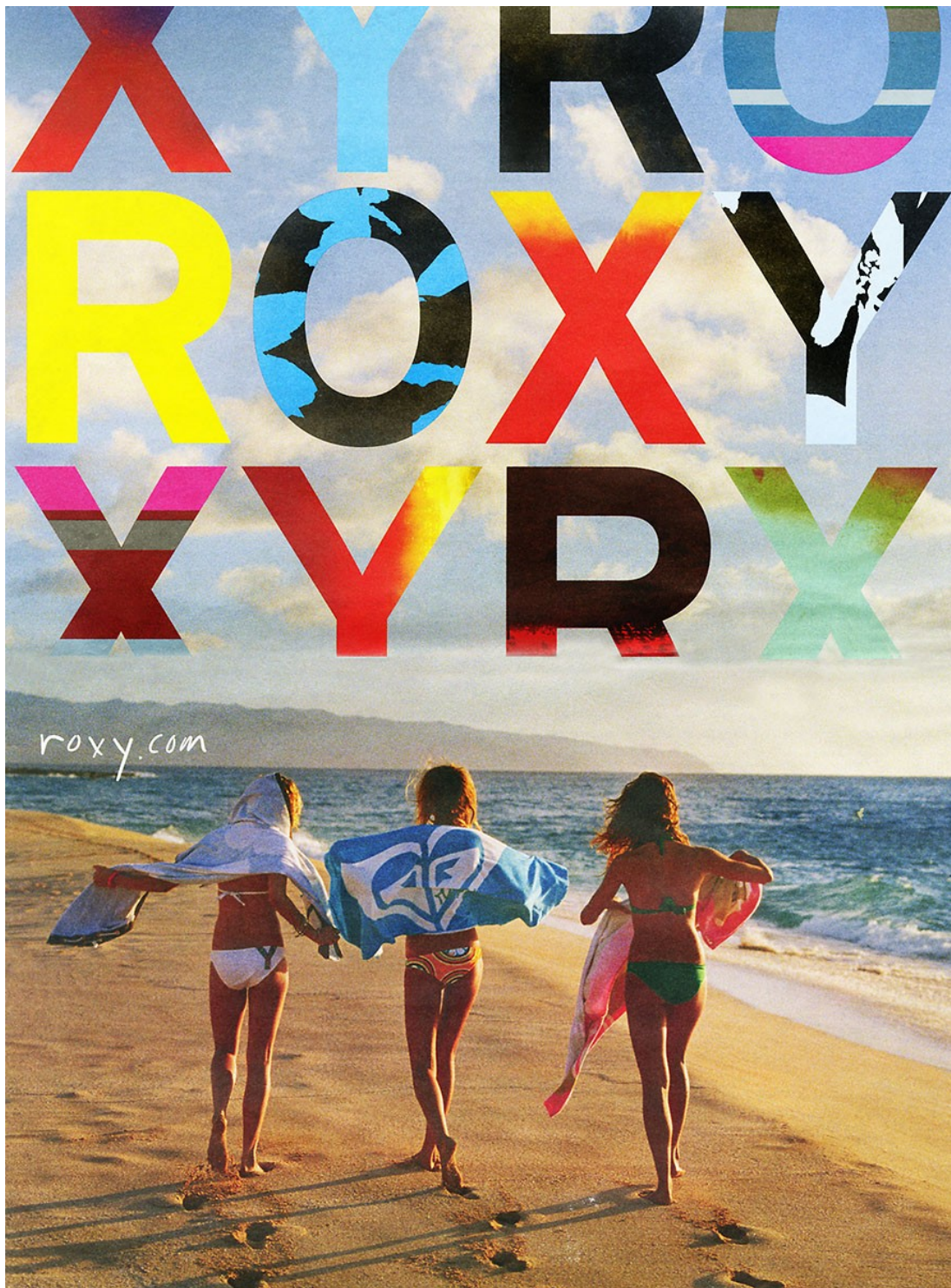


Abraham Latham

[www.art-dept.com](http://www.art-dept.com)



# Art Department

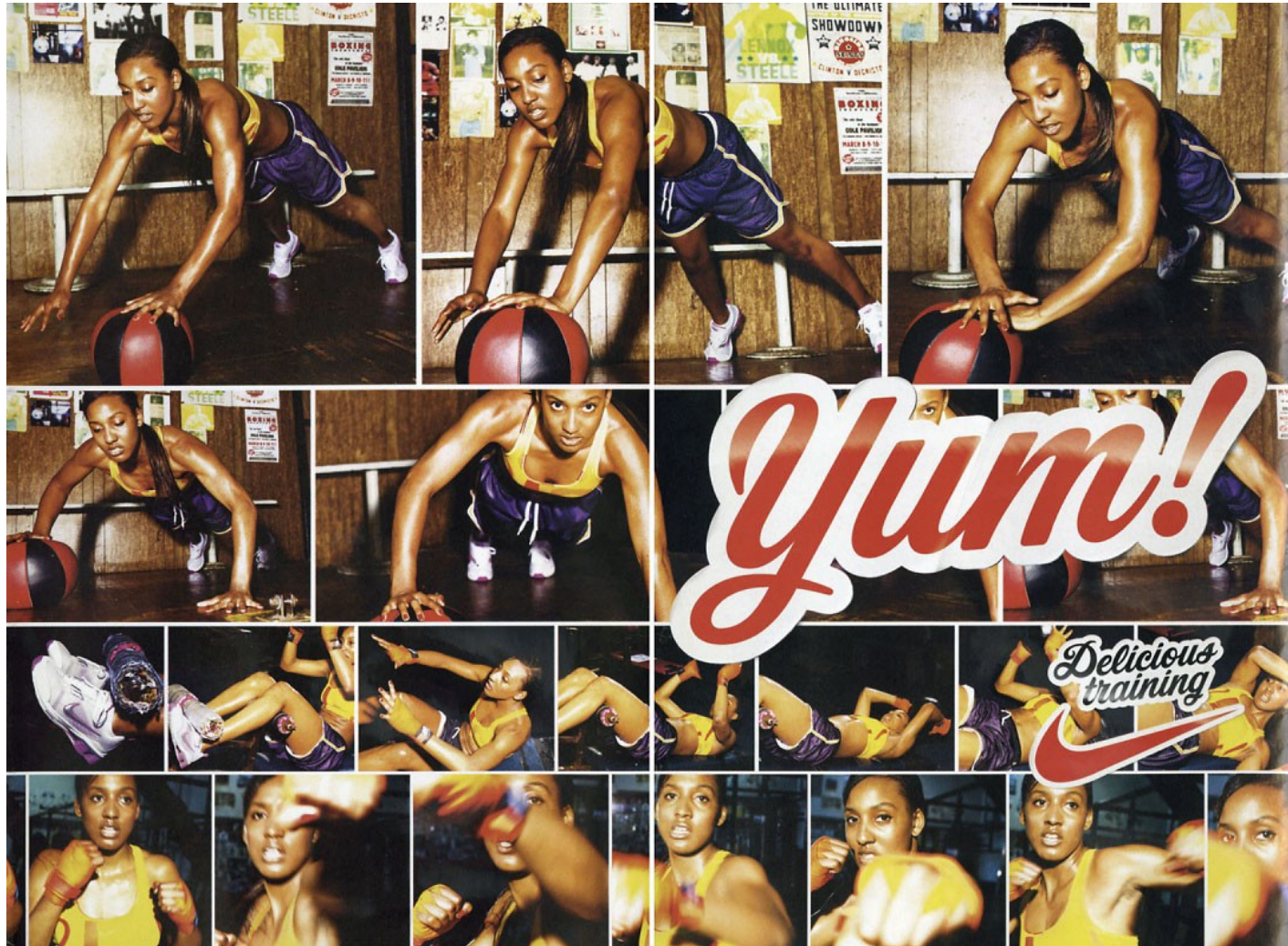


Abraham Latham

[www.art-dept.com](http://www.art-dept.com)



# Art Department



Abraham Latham

[www.art-dept.com](http://www.art-dept.com)



# Art Department



Abraham Latham

[www.art-dept.com](http://www.art-dept.com)



# Art Department

**FREE TOTE**  
WITH \$75  
SWIM PURCHASE  
USE CODE: SP233885  
Details page 2

THE  
*Lace*  
**BIKINI**  
CUTE SUITS GUARANTEE *fun* IN THE SUN.

**BEACH SEXY**  
A Lace bikini. Fully lined.  
Underwire cups. Removable  
halter strap. Amalfi blue (37C),  
neon hot pink (H64) or white  
(D2). Imported polyester/  
spandex.  
Push-up Bandeau.  
Sizes XS-36A-DD: 38B-DD.  
A-D sizes: **AM-297-083 \$32.50.**  
DD sizes: **AM-297-254 \$34.50.**  
Ruched Low-rise Hipkin.  
Sizes XS-L.  
**AM-297-086 \$22.50.**

8

Abraham Latham

[www.art-dept.com](http://www.art-dept.com)



# Art Department



Abraham Latham

[www.art-dept.com](http://www.art-dept.com)

# Art Department



Abraham Latham

[www.art-dept.com](http://www.art-dept.com)



# Art Department



Abraham Latham

[www.art-dept.com](http://www.art-dept.com)

# Art Department



Abraham Latham

[www.art-dept.com](http://www.art-dept.com)



# Art Department



Abraham Latham

[www.art-dept.com](http://www.art-dept.com)



# Art Department



Abraham Latham

[www.art-dept.com](http://www.art-dept.com)



# Art Department



Abraham Latham

[www.art-dept.com](http://www.art-dept.com)

# Art Department



Abraham Latham

[www.art-dept.com](http://www.art-dept.com)



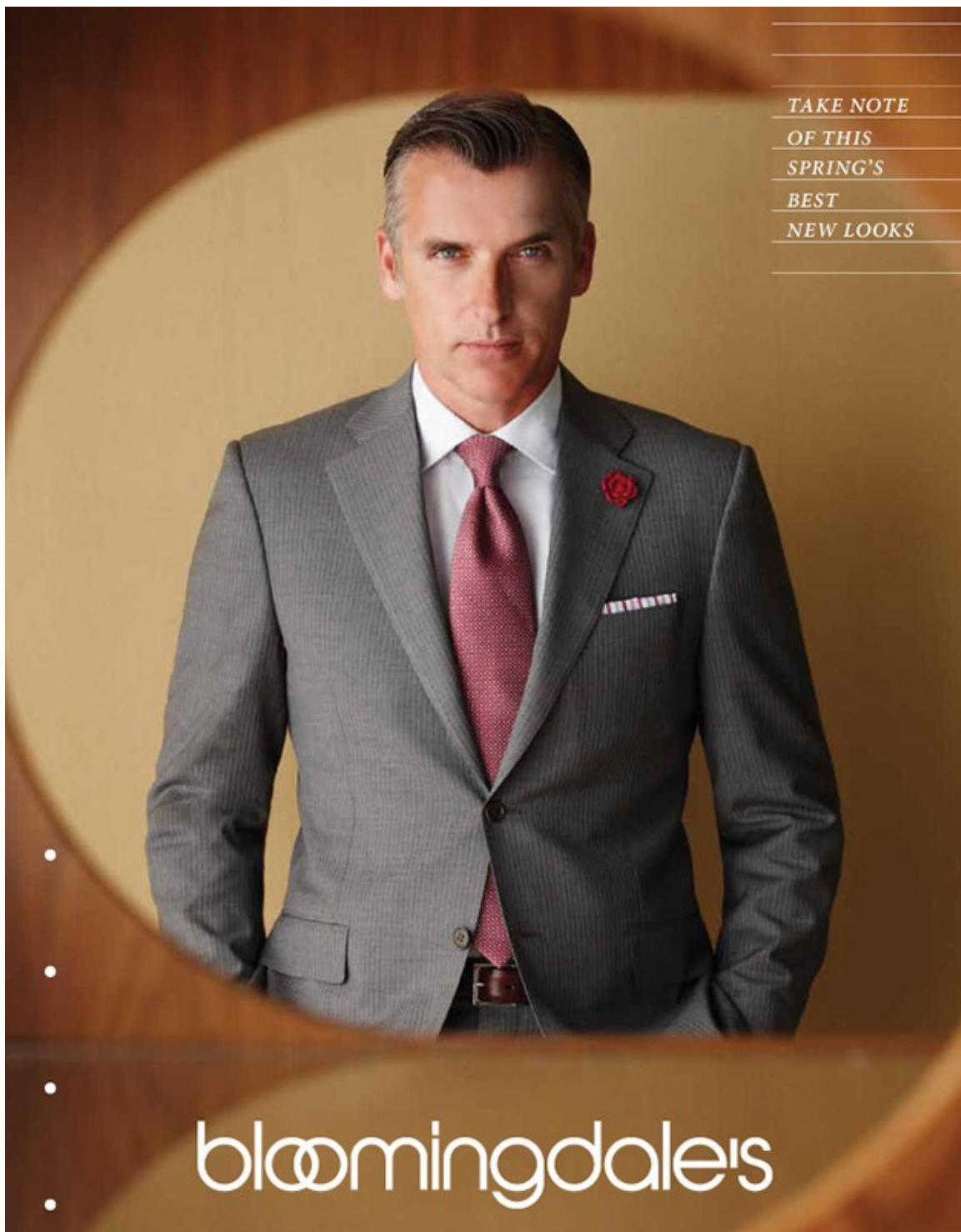
# Art Department



Abraham Latham

[www.art-dept.com](http://www.art-dept.com)

# Art Department



TAKE NOTE  
OF THIS  
SPRING'S  
BEST  
NEW LOOKS

•  
•  
•  
•

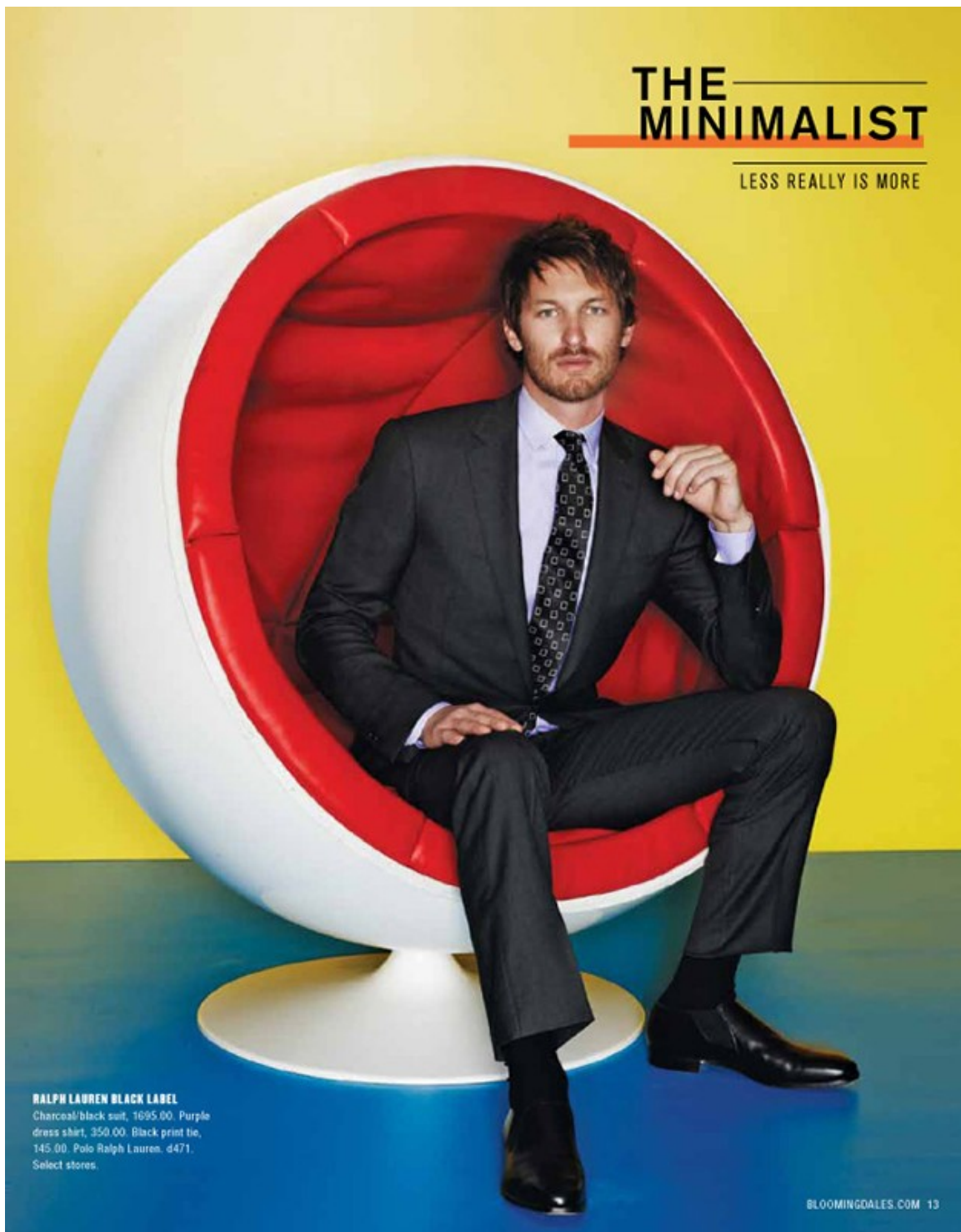
bloomingdale's

Abraham Latham

[www.art-dept.com](http://www.art-dept.com)



# Art Department



**THE  
MINIMALIST**

LESS REALLY IS MORE

**RALPH LAUREN BLACK LABEL**  
Charcoal/black suit, 1695.00. Purple  
dress shirt, 350.00. Black print tie,  
145.00. Polo Ralph Lauren, d471.  
Select stores.

BLOOMINGDALES.COM 13

Abraham Latham

[www.art-dept.com](http://www.art-dept.com)

# Art Department

**THEORY**  
Tan cotton solid suit, 795.00.  
Men's Tailored Clothing, 4526.  
White/light blue mini-check dress  
shirt, 145.00. Men's Dress Shirts,  
4509. Pink linen/silk solid tie, 98.00.  
// 582532 Men's Neckwear, 4525.  
Select stores.



AT HIS SERVICE 1-800-431-9644 19

Abraham Latham

[www.art-dept.com](http://www.art-dept.com)



# Art Department

A man with short, light brown hair is sitting on a modern, light-colored chair. He is wearing a blue windowpane check wool suit, a white dress shirt with a blue stripe, a yellow and blue striped tie, and a small orange flower boutonniere on his lapel. He is also wearing blue and white striped socks and dark brown loafers. His hands are clasped in his lap, and he is looking directly at the camera with a slight smile. The background is a plain, light-colored wall.

**JOSEPH ABOUD**  
Blue windowpane check wool suit, 795.00. Men's Suits. d526. Select stores.

**IKE DENAR**  
White/light blue striped French cuff dress shirt, 98.50. // 597060. d509. Taupe/blue striped tie, 95.00. d525. Men's Dress Shirts/Neckwear. Select stores.

**POINTS ARE A SHOPPER'S BEST FRIEND!**  
**TRIPLE POINTS**  
on everything for everyone  
no matter how you pay  
from March 8-18!

GLD.MHJGDALES.COM

Abraham Latham

[www.art-dept.com](http://www.art-dept.com)

# Art Department



A man in a light gray suit stands in a modern interior. Three spherical pendant lights hang from the ceiling. A wooden table is in the foreground. The man is looking towards the camera.

*the*  
**TRADITIONALIST**  
*tailored to perfection*

**CANALI**  
Light gray tonal-stripe wool suit (also on our front cover), 1795.00.  
Men's Tailored Clothing: 4526.  
Select stores: Silver check dress shirt, 275.00. // 591278. Men's Dress Shirts: 4509. Berry mini neck tie, 145.00. Men's Neckwear: 4525

BLOOMINGDALES.COM 5

Abraham Latham

[www.art-dept.com](http://www.art-dept.com)