

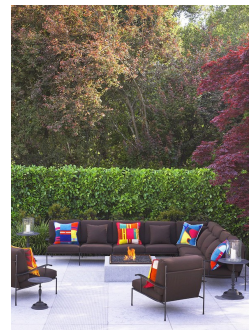
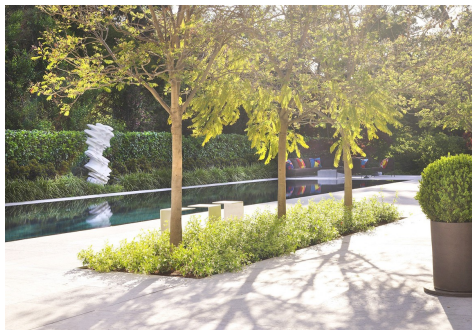
Art Department



Pieter Estersohn

www.art-dept.com

Art Department



Pieter Estersohn

www.art-dept.com

Art Department



Pieter Estersohn

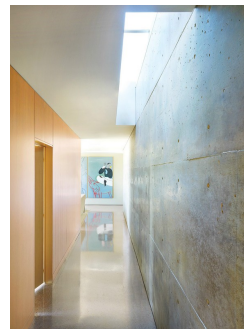
www.art-dept.com

Art Department



CROWNING ACHIEVEMENT

On a hill overlooking downtown Austin, Texas, Lake Placid architect and designer Terry Hauke collaborates on an airy minimalist retreat. Hauke's design is a testament to his insight into the



Pieter Estersohn

www.art-dept.com

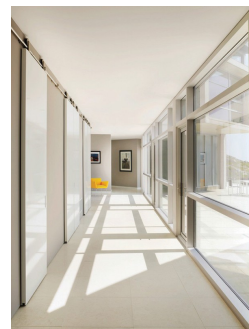
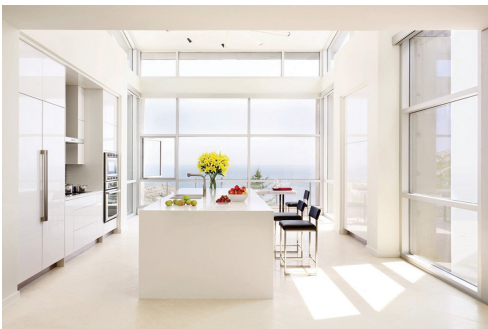
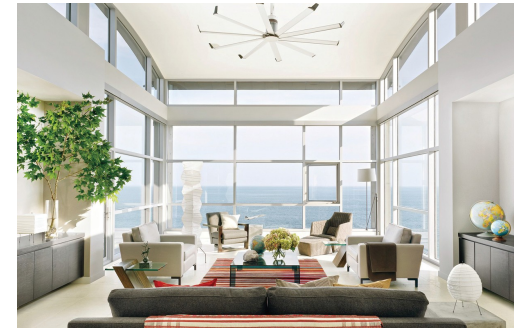
Art Department



Pieter Estersohn

www.art-dept.com

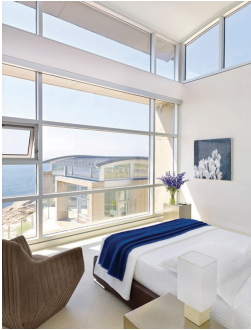
Art Department



Pieter Estersohn

www.art-dept.com

Art Department



Pieter Estersohn

www.art-dept.com

Art Department



Pieter Estersohn

www.art-dept.com

Art Department



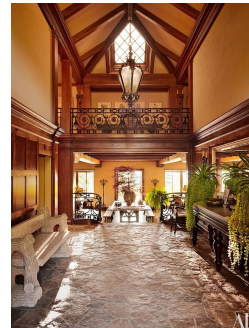
TERRACE IN THE TREETOPS



Pieter Estersohn

www.art-dept.com

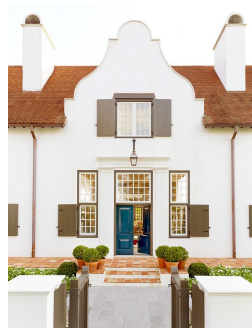
Art Department



Pieter Estersohn

www.art-dept.com

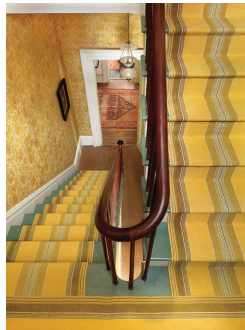
Art Department



Pieter Estersohn

www.art-dept.com

Art Department



Pieter Estersohn

www.art-dept.com

Art Department



Pieter Estersohn

www.art-dept.com

Art Department



Pieter Estersohn

www.art-dept.com

Art Department



LOCAL COLOR

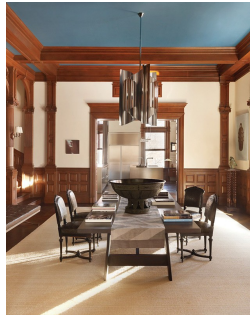
At an off-the-beaten-path Hampton retreat devoted to Carter and O'Shea's regional art, architecture, and furnishings take pride of place.



Pieter Estersohn

www.art-dept.com

Art Department



Pieter Estersohn

www.art-dept.com

Art Department



Pieter Estersohn

www.art-dept.com

Art Department



Pieter Estersohn

www.art-dept.com

Art Department



Pieter Estersohn

www.art-dept.com

Art Department



Pieter Estersohn

www.art-dept.com

Art Department



Pieter Estersohn

www.art-dept.com

Art Department



Pieter Estersohn

www.art-dept.com