

Art Department



Pieter Estersohn

www.art-dept.com

Art Department



Pieter Estersohn

www.art-dept.com

Art Department



Pieter Estersohn

www.art-dept.com

Art Department



Pieter Estersohn

www.art-dept.com

Art Department



Pieter Estersohn

www.art-dept.com

Art Department



Pieter Estersohn

www.art-dept.com

Art Department



Pieter Estersohn

www.art-dept.com

Art Department



Pieter Estersohn

www.art-dept.com

Art Department



Pieter Estersohn

www.art-dept.com

Art Department



Pieter Estersohn

www.art-dept.com

Art Department



Pieter Estersohn

www.art-dept.com

Art Department



Pieter Estersohn

www.art-dept.com

Art Department



Pieter Estersohn

www.art-dept.com

Art Department



Pieter Estersohn

www.art-dept.com

Art Department



Pieter Estersohn

www.art-dept.com

Art Department



Ted Flato and Karla Omer of Lake | Flato Architects designed this house. A two-story home partially submerged in its steep plot in Austin, Texas. The interiors were conceived in collaboration with decorator Terry Hunziker, and the landscape was transformed by the Garden Design Studio. For details see Sources.

CROWNING ACHIEVEMENT

On a hill overlooking downtown Austin, Texas, Lake | Flato Architects and designer Terry Hunziker collaborate on an airy minimalist retreat inventively anchored to its magnificent site

TEXT BY PHILIP NOBEL PHOTOGRAPHY BY PIETER ESTERSOHN PRODUCED BY HOWARD CHRISTIAN

107



Pieter Estersohn

www.art-dept.com

Art Department



Pieter Estersohn

www.art-dept.com

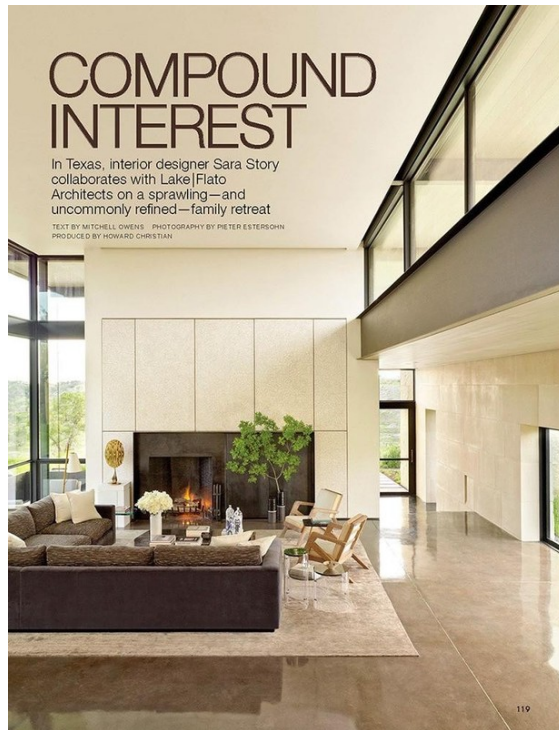
Art Department



Pieter Estersohn

www.art-dept.com

Art Department



Pieter Estersohn

www.art-dept.com

Art Department



Pieter Estersohn

www.art-dept.com

Art Department



Pieter Estersohn

www.art-dept.com

Art Department



Pieter Estersohn

www.art-dept.com

Art Department



Pieter Estersohn

www.art-dept.com

Art Department



Pieter Estersohn

www.art-dept.com

Art Department



Pieter Estersohn

www.art-dept.com

Art Department



Pieter Estersohn

www.art-dept.com

Art Department



Pieter Estersohn

www.art-dept.com

Art Department



Pieter Estersohn

www.art-dept.com

Art Department



Pieter Estersohn

www.art-dept.com

Art Department



Pieter Estersohn

www.art-dept.com

Art Department



Pieter Estersohn

www.art-dept.com

Art Department



Pieter Estersohn

www.art-dept.com

Art Department



Pieter Estersohn

www.art-dept.com

Art Department



Pieter Estersohn

www.art-dept.com

Art Department



Pieter Estersohn

www.art-dept.com

Art Department



Pieter Estersohn

www.art-dept.com

Art Department



Pieter Estersohn

www.art-dept.com

Art Department



Pieter Estersohn

www.art-dept.com

Art Department



Pieter Estersohn

www.art-dept.com

Art Department



Pieter Estersohn

www.art-dept.com

Art Department



Pieter Estersohn

www.art-dept.com

Art Department



Pieter Estersohn

www.art-dept.com

Art Department

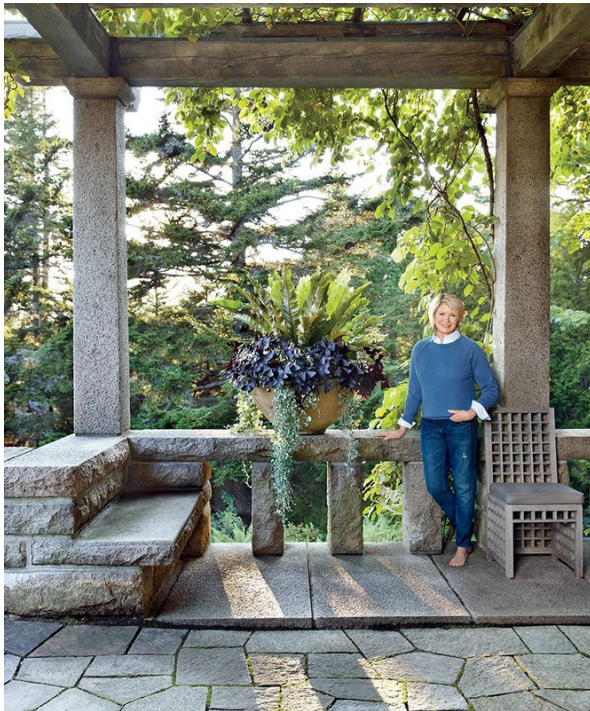


A pair of antique glazed terra-cotta sphinxes by Enrie Miller provide over the terrace at Skylands. In the center, a huge pot by Eric Soderlund shows off a blue agave surrounded by hellebores, or flower plants. The two concrete pots in front are by the Maine-based pottery Landerers. The agaves are underplanted with various trailing succulents. The wall around the edge of the terrace is just the right height for sitting and looking out at the water.

TERRACE IN THE TREETOPS

At her home in Maine, Martha decorates the outdoor space with massive pots of plants that enhance the natural beauty of the surroundings.

PHOTOGRAPHS BY PIETER ESTERSOHN



Pieter Estersohn

www.art-dept.com

Art Department



Pieter Estersohn

www.art-dept.com

Art Department



Pieter Estersohn

www.art-dept.com

Art Department



Pieter Estersohn

www.art-dept.com

Art Department



Pieter Estersohn

www.art-dept.com

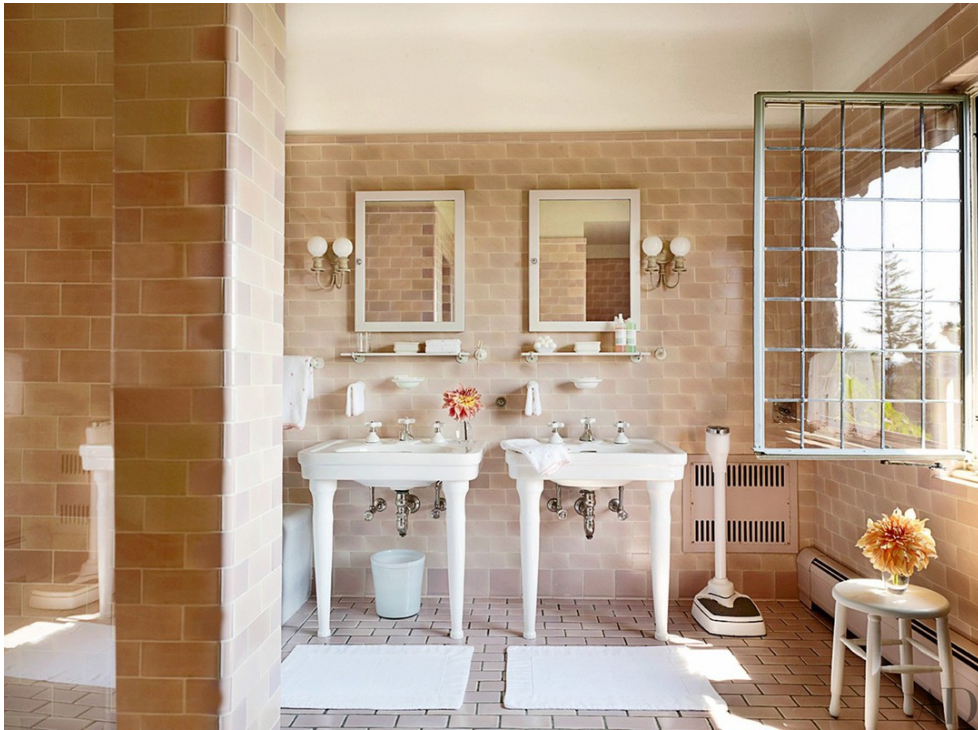
Art Department



Pieter Estersohn

www.art-dept.com

Art Department



Pieter Estersohn

www.art-dept.com

Art Department



Pieter Estersohn

www.art-dept.com

Art Department



Pieter Estersohn

www.art-dept.com

Art Department



Pieter Estersohn

www.art-dept.com

Art Department



Pieter Estersohn

www.art-dept.com

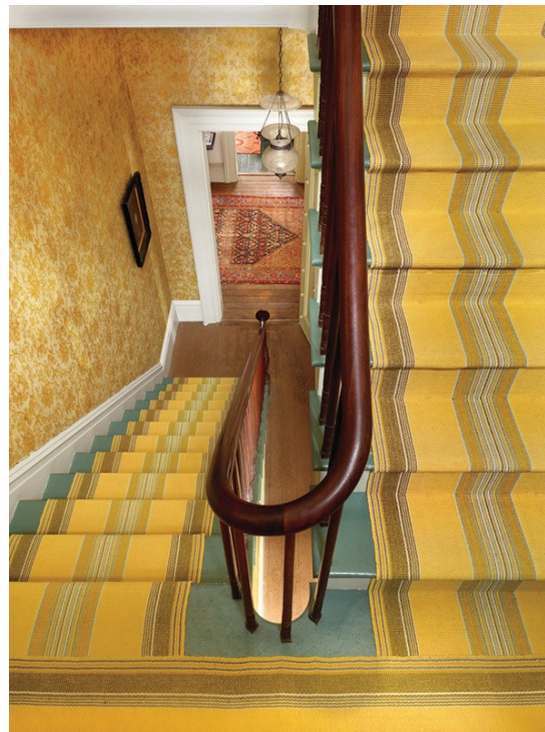
Art Department



Pieter Estersohn

www.art-dept.com

Art Department



Pieter Estersohn

www.art-dept.com

Art Department



Pieter Estersohn

www.art-dept.com

Art Department



Pieter Estersohn

www.art-dept.com

Art Department



Pieter Estersohn

www.art-dept.com

Art Department



Pieter Estersohn

www.art-dept.com

Art Department



Pieter Estersohn

www.art-dept.com

Art Department



Pieter Estersohn

www.art-dept.com

Art Department



Pieter Estersohn

www.art-dept.com

Art Department



Pieter Estersohn

www.art-dept.com

Art Department



Pieter Estersohn

www.art-dept.com

Art Department



Pieter Estersohn

www.art-dept.com

Art Department



Pieter Estersohn

www.art-dept.com

Art Department



Pieter Estersohn

www.art-dept.com

Art Department



Pieter Estersohn

www.art-dept.com

Art Department



LOCAL COLOR

At an effortlessly chic Hamptons retreat decorated by Carrier and Co., lively regional artifacts, artwork, and furnishings take pride of place

TEXT BY RAUL BARRENECHE PHOTOGRAPHY BY PIETER ESTERSOHN PRODUCED BY HOWARD CHRISTIAN

163



Pieter Estersohn

www.art-dept.com

Art Department



Pieter Estersohn

www.art-dept.com

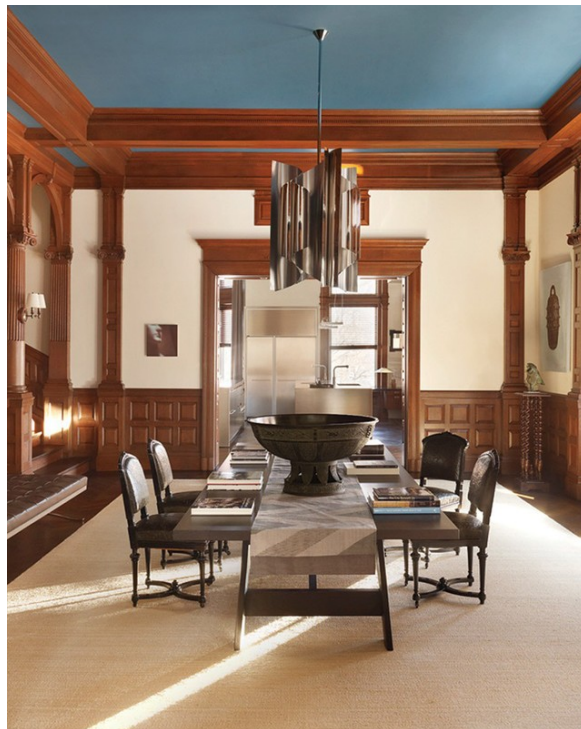
Art Department



Pieter Estersohn

www.art-dept.com

Art Department



Pieter Estersohn

www.art-dept.com

Art Department



Pieter Estersohn

www.art-dept.com

Art Department



Pieter Estersohn

www.art-dept.com

Art Department



Pieter Estersohn

www.art-dept.com

Art Department



Pieter Estersohn

www.art-dept.com

Art Department



Pieter Estersohn

www.art-dept.com

Art Department

Light + Lively

Featuring exotic trompe l'oeil, tropical art, and a sprightly palette, Nancy and Bill Morton's historic Florida home is a Gulf Coast paradise

TEXT BY ROBERT JANUGIAN PHOTOGRAPHY BY PIETER ESTERSOHN PRODUCED BY HOWARD CHRISTIAN



Above: The Boca Grande, Florida, residence of decorator Nancy Morton and her husband, Bill, was designed in 1940 by architect F. Burrall Hoffman Jr. Opposite: A plunge pool centers the front courtyard; the ceramic tiles and travertine pavers are by Country Floors. For details see Sources.

148



Pieter Estersohn

www.art-dept.com

Art Department



Pieter Estersohn

www.art-dept.com

Art Department



Pieter Estersohn

www.art-dept.com

Art Department



Pieter Estersohn

www.art-dept.com

Art Department



Pieter Estersohn

www.art-dept.com

Art Department



Pieter Estersohn

www.art-dept.com

Art Department



Pieter Estersohn

www.art-dept.com

Art Department



Pieter Estersohn

www.art-dept.com

Art Department



Pieter Estersohn

www.art-dept.com

Art Department



Pieter Estersohn

www.art-dept.com

Art Department



Pieter Estersohn

www.art-dept.com

Art Department



Pieter Estersohn

www.art-dept.com

Art Department



Pieter Estersohn

www.art-dept.com

Art Department



Pieter Estersohn

www.art-dept.com

Art Department



Pieter Estersohn

www.art-dept.com

Art Department



IN A NEW LIGHT

Nashville philanthropists and photography collectors Jennifer and Billy Frist break with tradition in a soaring, sun-drenched contemporary dwelling designed with family and entertaining in mind

TEXT BY MITCHELL OWENS
PHOTOGRAPHY BY PIETER ESTERSON
PRODUCED BY HOWARD CHRISTIAN

Left: A floral light sculpture by U-Ram Choe glimmers in the living room of Jennifer and Billy Frist's Tennessee house, which was renovated by the architecture firm GH&J and decorated by Madeline Booth & Forrier Interiors. At far left, the curtains are of a Great Plains fabric, and a tree trunk-like cocktail table by Christa stands near a vintage Tolson Partridge armchair from Duane Modern. The William Haines Designs slipper chairs are upholstered in a faux shearling by Larsen, and the Christophe Delcourt estelles are from Ralph Pucci International; the low credenza at right is by BDDW. For details see Sources.

75



Pieter Estersohn

www.art-dept.com

Art Department



Pieter Estersohn

www.art-dept.com

Art Department



Pieter Estersohn

www.art-dept.com

Art Department



Pieter Estersohn

www.art-dept.com

Art Department



Pieter Estersohn

www.art-dept.com

Art Department



Pieter Estersohn

www.art-dept.com

Art Department



Aerin's World

TEXT BY BRAD GOLDFARB PHOTOGRAPHY BY PIETER ESTERSOHN PRODUCED BY PARKER BOWIE LARSON AND MICHAEL REYNOLDS



Pieter Estersohn

www.art-dept.com

Art Department



Pieter Estersohn

www.art-dept.com