

# Art Department



Mitch Jenkins

[www.art-dept.com](http://www.art-dept.com)



# Art Department



Mitch Jenkins

[www.art-dept.com](http://www.art-dept.com)



# Art Department



Mitch Jenkins

[www.art-dept.com](http://www.art-dept.com)



# Art Department



Mitch Jenkins

[www.art-dept.com](http://www.art-dept.com)



# Art Department



**TUESDAY IS  
FOR WATCHING  
CELEBRITY CHEFS.**

PLEASE PLAY RESPONSIBLY. MUST BE 21. FOR HELP VISIT [MGMAMBUSH.ORG](http://MGMAMBUSH.ORG) OR CALL 1-800-GAMBLER.



Mitch Jenkins

[www.art-dept.com](http://www.art-dept.com)



# Art Department



WEDNESDAY IS  
FOR CATCHING UP  
ON YOUR SHOWS.



PLEASE PLAY RESPONSIBLY. MUST BE 21. FOR HELP VISIT [MGMGAMBLINGHELP.ORG](http://MGMGAMBLINGHELP.ORG) OR CALL 1-800-GAMBLER.

## Mitch Jenkins

[www.art-dept.com](http://www.art-dept.com)



# Art Department



Mitch Jenkins

[www.art-dept.com](http://www.art-dept.com)



# Art Department



Mitch Jenkins

[www.art-dept.com](http://www.art-dept.com)



# Art Department



Mitch Jenkins

[www.art-dept.com](http://www.art-dept.com)



# Art Department



Mitch Jenkins

[www.art-dept.com](http://www.art-dept.com)



# Art Department



Mitch Jenkins

[www.art-dept.com](http://www.art-dept.com)



# Art Department



Mitch Jenkins

[www.art-dept.com](http://www.art-dept.com)



# Art Department



Mitch Jenkins

[www.art-dept.com](http://www.art-dept.com)



# Art Department



Mitch Jenkins

[www.art-dept.com](http://www.art-dept.com)



# Art Department



Mitch Jenkins

[www.art-dept.com](http://www.art-dept.com)



# Art Department



Mitch Jenkins

[www.art-dept.com](http://www.art-dept.com)



# Art Department



Mitch Jenkins

[www.art-dept.com](http://www.art-dept.com)



# Art Department



## Mitch Jenkins

[www.art-dept.com](http://www.art-dept.com)



# Art Department



Mitch Jenkins

[www.art-dept.com](http://www.art-dept.com)



# Art Department



Mitch Jenkins

[www.art-dept.com](http://www.art-dept.com)



# Art Department



Mitch Jenkins

[www.art-dept.com](http://www.art-dept.com)



# Art Department



Mitch Jenkins

[www.art-dept.com](http://www.art-dept.com)



# Art Department



Mitch Jenkins

[www.art-dept.com](http://www.art-dept.com)



# Art Department

**Moving  
UpTo  
Canada  
.com**



Mitch Jenkins

[www.art-dept.com](http://www.art-dept.com)

# Art Department



Mitch Jenkins

[www.art-dept.com](http://www.art-dept.com)



# Art Department



Mitch Jenkins

[www.art-dept.com](http://www.art-dept.com)

# Art Department



Mitch Jenkins

[www.art-dept.com](http://www.art-dept.com)



# Art Department



Mitch Jenkins

[www.art-dept.com](http://www.art-dept.com)

# Art Department



Mitch Jenkins

[www.art-dept.com](http://www.art-dept.com)



# Art Department



Mitch Jenkins

[www.art-dept.com](http://www.art-dept.com)

# Art Department



Mitch Jenkins

[www.art-dept.com](http://www.art-dept.com)



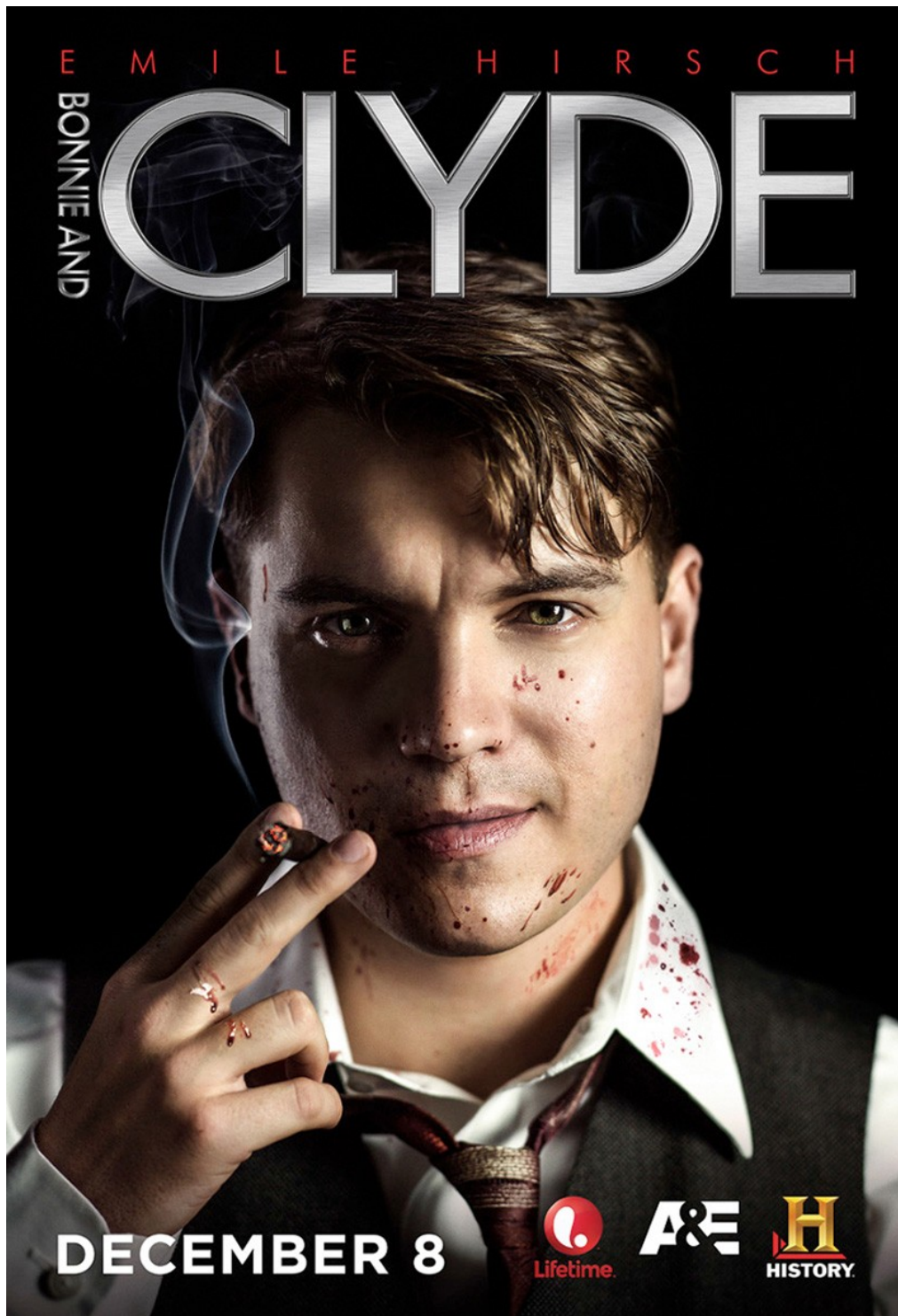
# Art Department



Mitch Jenkins

[www.art-dept.com](http://www.art-dept.com)

# Art Department



Mitch Jenkins

[www.art-dept.com](http://www.art-dept.com)



# Art Department



Mitch Jenkins

[www.art-dept.com](http://www.art-dept.com)

# Art Department



Mitch Jenkins

[www.art-dept.com](http://www.art-dept.com)



# Art Department



Mitch Jenkins

[www.art-dept.com](http://www.art-dept.com)

# Art Department



Mitch Jenkins

[www.art-dept.com](http://www.art-dept.com)



# Art Department



Mitch Jenkins

[www.art-dept.com](http://www.art-dept.com)



# Art Department

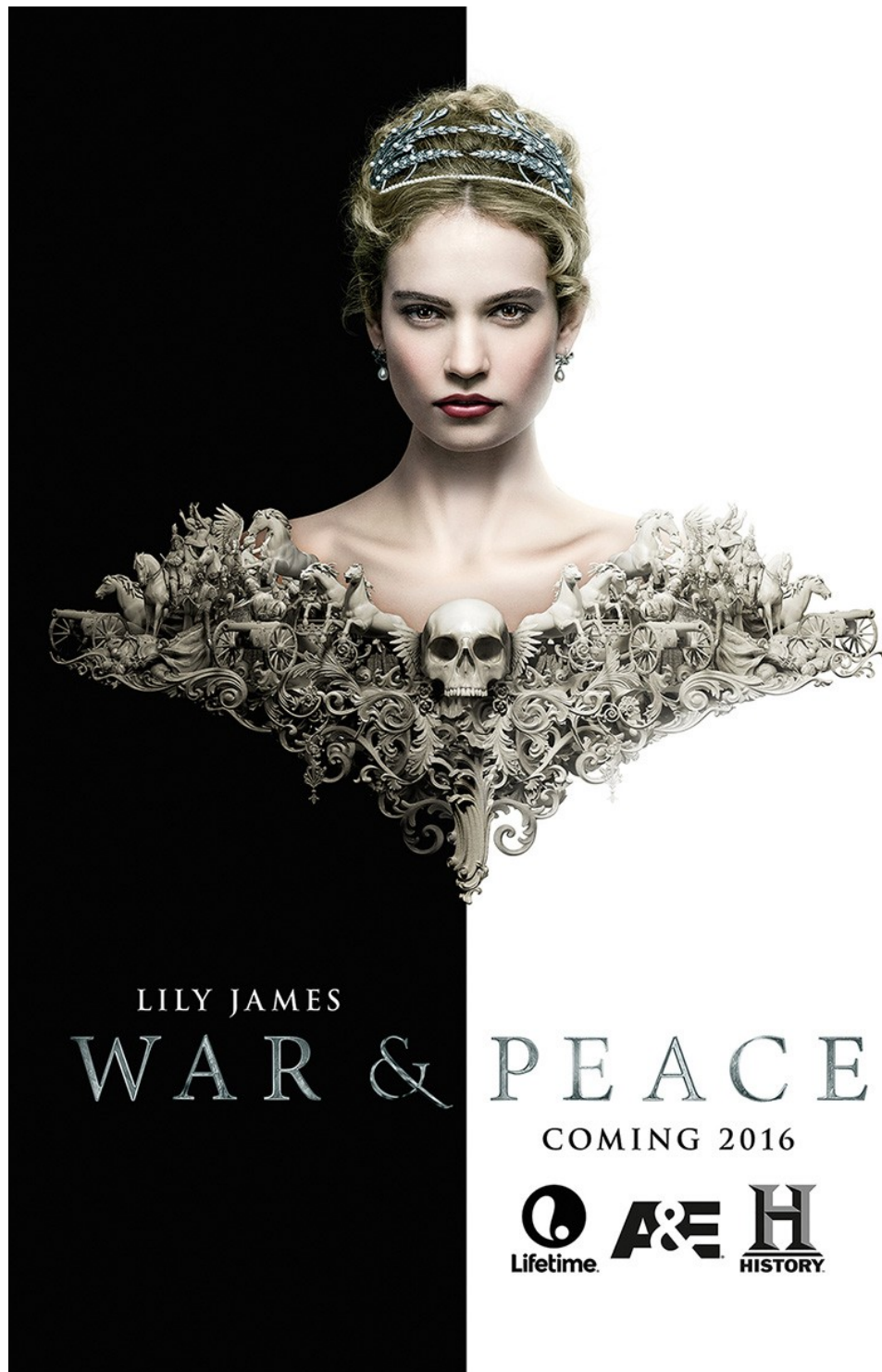


Mitch Jenkins

[www.art-dept.com](http://www.art-dept.com)



# Art Department



Mitch Jenkins

[www.art-dept.com](http://www.art-dept.com)

# Art Department



Mitch Jenkins

[www.art-dept.com](http://www.art-dept.com)



# Art Department



Mitch Jenkins

[www.art-dept.com](http://www.art-dept.com)

# Art Department



Mitch Jenkins

[www.art-dept.com](http://www.art-dept.com)



# Art Department



Mitch Jenkins

[www.art-dept.com](http://www.art-dept.com)

# Art Department



Mitch Jenkins

[www.art-dept.com](http://www.art-dept.com)



# Art Department



Mitch Jenkins

[www.art-dept.com](http://www.art-dept.com)

# Art Department



Mitch Jenkins

[www.art-dept.com](http://www.art-dept.com)



# Art Department



Mitch Jenkins

[www.art-dept.com](http://www.art-dept.com)

# Art Department

A promotional poster for the TV series 'Lost'. It features a close-up of actor Ian Somerhalder with long, dark, curly hair and a beard, wearing a black tank top. He is looking directly at the camera with a serious expression. The background is dark and moody, with some light filtering through, suggesting a storm or a cave. The text is in a bold, distressed, white font.

**ALL WILL BECOME CLEAR  
TONIGHT AT 9PM.  
WON'T IT?**

**LOST**  
THE PENULTIMATE SERIES STARTS TONIGHT 9PM  
ONLY ON SKY1 HD AND SKY1 [SKY.COM/JOIN](http://sky.com/join)

**sky1<sup>HD</sup>**  
EXPERIENCE MORE IN HIGH DEFINITION

Mitch Jenkins

[www.art-dept.com](http://www.art-dept.com)



# Art Department



Mitch Jenkins

[www.art-dept.com](http://www.art-dept.com)

# Art Department



Mitch Jenkins

[www.art-dept.com](http://www.art-dept.com)



# Art Department



Mitch Jenkins

[www.art-dept.com](http://www.art-dept.com)

# Art Department



Mitch Jenkins

[www.art-dept.com](http://www.art-dept.com)



# Art Department



Mitch Jenkins

[www.art-dept.com](http://www.art-dept.com)



# Art Department



Mitch Jenkins

[www.art-dept.com](http://www.art-dept.com)



# Art Department



**RISEING:  
REBUILDING  
GROUND ZERO**

**STARTS MONDAY  
5TH SEPTEMBER 8PM**

**Discovery** HD  
CHANNEL

Mitch Jenkins

[www.art-dept.com](http://www.art-dept.com)

# Art Department



Mitch Jenkins

[www.art-dept.com](http://www.art-dept.com)



# Art Department



Mitch Jenkins

[www.art-dept.com](http://www.art-dept.com)

# Art Department



"I'm perfect. You're not. Can you handle that?"

Gene Simmons Family Jewels  
TUESDAYS 10/9C

A&E | Real Life. Drama.

## Mitch Jenkins

[www.art-dept.com](http://www.art-dept.com)



# Art Department



Mitch Jenkins

[www.art-dept.com](http://www.art-dept.com)

# Art Department



Mitch Jenkins

[www.art-dept.com](http://www.art-dept.com)



# Art Department



Mitch Jenkins

[www.art-dept.com](http://www.art-dept.com)

# Art Department



Mitch Jenkins

[www.art-dept.com](http://www.art-dept.com)



# Art Department



Mitch Jenkins

[www.art-dept.com](http://www.art-dept.com)

# Art Department



Mitch Jenkins

[www.art-dept.com](http://www.art-dept.com)



# Art Department



Mitch Jenkins

[www.art-dept.com](http://www.art-dept.com)

# Art Department

A composite image for a Mercedes-Benz SLK advertisement. The background is a dark, bokeh-filled space. In the center, a woman's face is shown in profile, looking towards the right. Overlaid on her face is a detailed, illuminated image of a classical building at night. In the lower right corner, a silver Mercedes-Benz SLK is shown from a front-three-quarter view. The car is parked on a cobblestone street, and a street lamp is visible behind it.

见者，即钟情  
全新梅赛德斯-奔驰SLK级敞篷跑车

125年! 汽车发明者

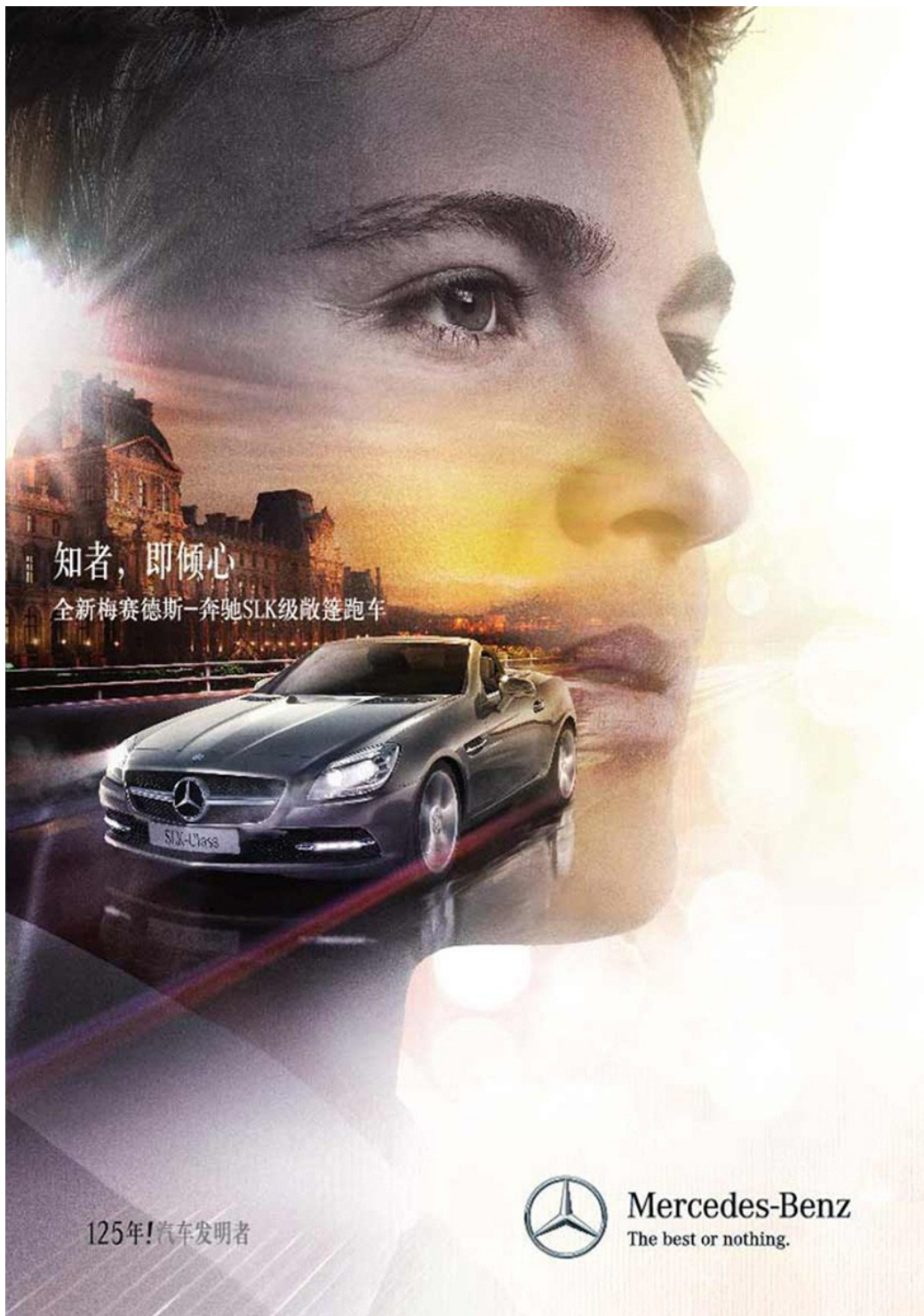
 Mercedes-Benz  
The best or nothing.

Mitch Jenkins

[www.art-dept.com](http://www.art-dept.com)



# Art Department



Mitch Jenkins

[www.art-dept.com](http://www.art-dept.com)

# Art Department



The advertisement is a horizontal split. The left half shows Kobe Bryant in a purple jersey, holding a basketball high above his head, looking up. The right half shows a blue Smart car parked on a dark surface. In the background of the right half is a large, semi-transparent image of Kobe Bryant's face. The Smart logo and tagline 'open your mind.' are in the top right corner. Large Chinese characters are overlaid across the middle. The bottom section contains promotional text and contact information.

smart<sup>®</sup>  
open your mind.

从坚不摧 到无懈可击, 大行其道

>> smart 携手科比, 城市大不同  
凭领先之技, 而无坚不摧; 以万全之计, 达无懈可击。

全球所爱 来自梅赛德斯-奔驰

china.smart.com  
400-811-0000

Mitch Jenkins

[www.art-dept.com](http://www.art-dept.com)



# Art Department



The advertisement is split into two main visual sections. The left section features Kobe Bryant in a purple jersey, smiling and holding a basketball, with a Smart car behind him, its headlights on. The right section features a close-up of Kobe's face with the Smart logo and slogan 'open your mind.' above it, and a red Smart car below. Large Chinese characters are overlaid across the middle.

smart<sup>®</sup>  
open your mind.

大享其城  
到万众倾慕，  
从举世瞩目

>> smart 携手科比，城市大不同  
是城市亮点，更点亮城市；在城市中心，引万众倾心。

全球所爱 来自梅赛德斯-奔驰

china.smart.com  
400-811-0000

Mitch Jenkins

[www.art-dept.com](http://www.art-dept.com)

# Art Department



Mitch Jenkins

[www.art-dept.com](http://www.art-dept.com)



# Art Department

An advertisement for the O2 Matchday app. The background is a dark, moody photograph of a referee in a blue and orange striped shirt, looking intently at the camera with his hand near his face. Behind him are three England rugby players in white jerseys with the O2 logo. The scene is set in a stadium at night.

**SPILL IT  
AND HE'LL  
KNOW**

Hear every call direct from the ref with live Ref!Link free and exclusive on the O<sub>2</sub> Matchday app. Works best over wifi. Ask bar staff for more info.

**Text MATCHDAY to 61202**

The England rose is an official registered trade mark of the Rugby Football Union.

**Proud of England Rugby** 

Selected internet-enabled phones. Data charges may apply. Excludes coverage in Twickenham stadium. See o2.co.uk

## Mitch Jenkins

[www.art-dept.com](http://www.art-dept.com)

# Art Department

A promotional poster for the O2 Matchday app. It features a top-down view of five England rugby players in their white kit, huddled together with a black and white dog. The players' faces are visible, looking towards the center. The dog's head is in the middle of the huddle, looking up. The background is a dark, textured blue. The text 'ENGLAND ON DEMAND' is prominently displayed in the center. Below it, a paragraph describes the app's features: exclusive QBE International England vs New Zealand videos, interviews, pre-game access, and in-game replays, all available in 4G. It also mentions that the app is only on the O2 Matchday app and is a fan's best friend. A call to action 'Be more dog. Text MATCHDAY to 61202' is at the bottom. Logos for England Rugby, O2 Matchday, Apple App Store, and Google Play are at the bottom left. The O2 logo and 'Proud of England Rugby' are at the bottom right. A small disclaimer at the very bottom states that the England rose is an official registered trade mark of the Rugby Football Union and provides details about 3G/4G coverage and data charges.

**ENGLAND ON DEMAND**

Get all the things that make a rugby fan's heart sing with exclusive QBE International England vs New Zealand videos, interviews, pre-game access and in-game replays, all in glorious 4G. Only on the O<sub>2</sub> Matchday app. A fan's best friend.

**Be more dog. Text MATCHDAY to 61202**

England Rugby O<sub>2</sub> Matchday Available on the App Store GET IT ON Google play

Proud of England Rugby O<sub>2</sub>

The England rose is an official registered trade mark of the Rugby Football Union. Selected 3G and 4G internet-enabled phones. Data charges may apply. Ref!Link feature excludes coverage in Twickenham stadium. See o2.co.uk

Mitch Jenkins

[www.art-dept.com](http://www.art-dept.com)



# Art Department

A close-up portrait of Lee Mears, a man with dark hair and a slight smile, wearing a black headband. He has red lipstick applied to his lips. The background is dark. In the top left corner, there is a red square with a white heart and a heartbeat line, with the text 'British Heart Foundation' below it. On the left side, there is white text: 'LEE MEARS FIGHTS HEART DISEASE EVERY DAY. ON 7 FEB HE'LL FIGHT IT WITH A SMILE.' Below this, in smaller white text: 'On 7 February Lee and thousands of others will be Ramping up the Red, helping us raise money for life-saving heart research. You can help too. Grab your mates, sign up and join in the fun. Visit [bhf.org.uk/red](http://bhf.org.uk/red) for your free fundraising pack.' At the bottom left, in red text: 'FIGHT FOR EVERY HEARTBEAT'. At the bottom right, in white text: 'Lee Mears, 34. Ex-England rugby player. Heart disease survivor.' At the very bottom, in small white text: '© British Heart Foundation 2013, registered charity in England and Wales (225971) and in Scotland (SC039126)'.

**LEE MEARS  
FIGHTS  
HEART DISEASE  
EVERY DAY.  
ON 7 FEB HE'LL  
FIGHT IT  
WITH A SMILE.**

On 7 February Lee and thousands of others will be Ramping up the Red, helping us raise money for life-saving heart research. You can help too. Grab your mates, sign up and join in the fun.

Visit [bhf.org.uk/red](http://bhf.org.uk/red) for your free fundraising pack.

**FIGHT  
FOR EVERY  
HEARTBEAT**

Lee Mears, 34.  
Ex-England rugby player.  
Heart disease survivor.

© British Heart Foundation 2013, registered charity in England and Wales (225971) and in Scotland (SC039126)

## Mitch Jenkins

[www.art-dept.com](http://www.art-dept.com)

# Art Department



HYDRATES+FUELS  
YOU BETTER THAN  
WATER

#IBELIEVE

Lucozade  
YES

SEE THE SCIENCE  
[LUCOZADESPORT.COM/PERFORM](http://LUCOZADESPORT.COM/PERFORM)

Lucozade  
Sport  
ISOTONIC  
PERFORMANCE  
FUEL  
ORANGE

Lucozade, Lucozade Sport and the Lucozade logo are registered trademarks of the Lucozade Group and its subsidiaries.

Mitch Jenkins

[www.art-dept.com](http://www.art-dept.com)



# Art Department



A full-page advertisement for Lucozade Sport. The background is a close-up portrait of Alex Oxlade-Chamberlain, a professional footballer, looking directly at the camera with a serious expression. He has short dark hair and is wearing a blue football jersey. The overall color scheme is blue and yellow, matching the Lucozade branding.

**LUCOZADE SPORT**  
**HYDRATES AND**  
**FUELS YOU BETTER THAN**  
**WATER**

**#IBELIEVE**

**YES**

**SCIENTIFICALLY PROVEN**

**Lucozade Sport**  
ISOTONIC PERFORMANCE FUEL  
ORANGE

NAME: ALEX OXLADE-CHAMBERLAIN  
DOB: 15/08/1993  
HEIGHT: 1.80M  
TEAM: ARSENAL & ENGLAND

CARBOHYDRATE, ALONG WITH SODIUM, HELPS YOUR BODY ABSORB FLUID MORE EFFECTIVELY. WATER DOES NOT CONTAIN A SOURCE OF SODIUM OR CARBOHYDRATE.  
**LUCOZADE SPORT DOES.**

GLUCOSE ABSORPTION

Lucozade, Lucozade Sport and the Arc Device are registered trade marks of the GlaxoSmithKline group of companies.

Mitch Jenkins

# Art Department



Mitch Jenkins

[www.art-dept.com](http://www.art-dept.com)



# Art Department



Mitch Jenkins

[www.art-dept.com](http://www.art-dept.com)

# Art Department



Mitch Jenkins

[www.art-dept.com](http://www.art-dept.com)