

Art Department



Martyn Thompson

www.art-dept.com

Art Department



Martyn Thompson

www.art-dept.com

Art Department



Martyn Thompson

www.art-dept.com

Art Department



Martyn Thompson

www.art-dept.com

Art Department



Martyn Thompson

www.art-dept.com

Art Department



Martyn Thompson

www.art-dept.com

Art Department



Martyn Thompson

www.art-dept.com

Art Department



Martyn Thompson

www.art-dept.com

Art Department



Martyn Thompson

www.art-dept.com

Art Department



Martyn Thompson

www.art-dept.com

Art Department



Martyn Thompson

www.art-dept.com

Art Department



Martyn Thompson

www.art-dept.com

Art Department



Martyn Thompson

www.art-dept.com

Art Department



Martyn Thompson

www.art-dept.com

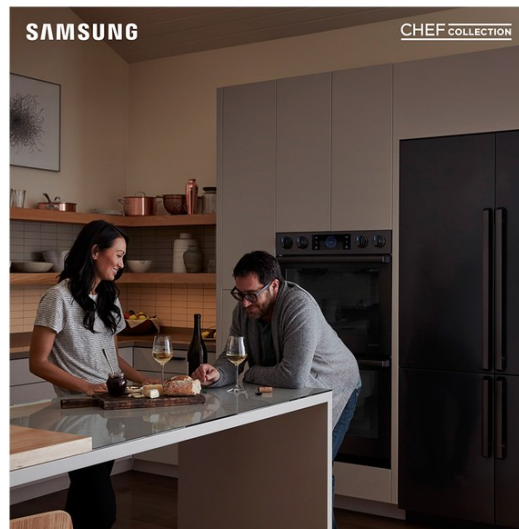
Art Department



Martyn Thompson

www.art-dept.com

Art Department



**Inspired by chefs.
Created for you.**

Michelin Three Star Chef Christopher Kostow
for Samsung Chef Collection appliances.

© 2018 Samsung Electronics America, Inc.



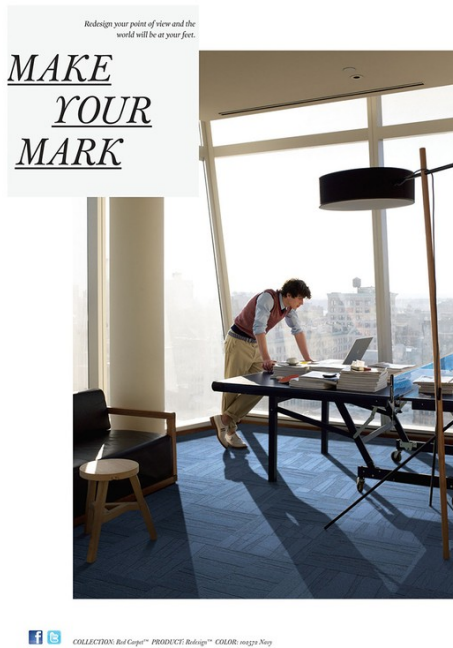
**Inspired by chefs.
Created for you.**

Michelin Three Star Chef Christopher Kostow
for Samsung Chef Collection appliances.

Martyn Thompson

www.art-dept.com

Art Department



Martyn Thompson

www.art-dept.com

Art Department



Martyn Thompson

www.art-dept.com

Art Department



Martyn Thompson

www.art-dept.com

Art Department



Martyn Thompson

www.art-dept.com

Art Department



Martyn Thompson

www.art-dept.com

Art Department



Martyn Thompson

www.art-dept.com

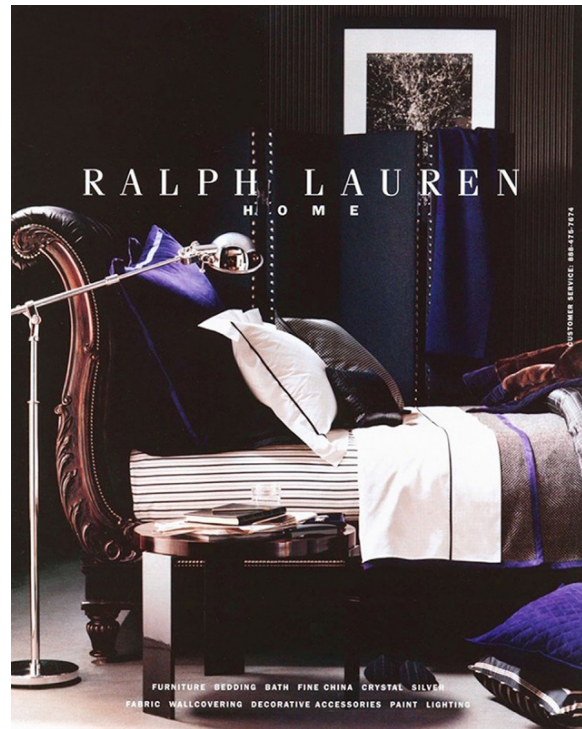
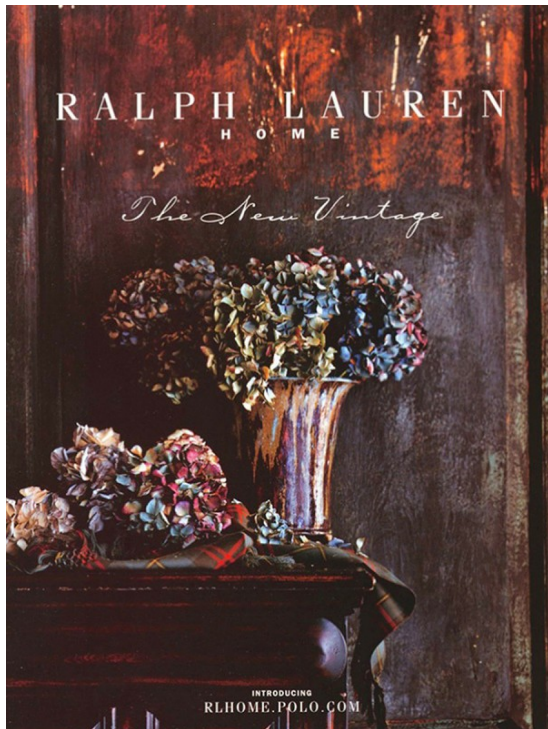
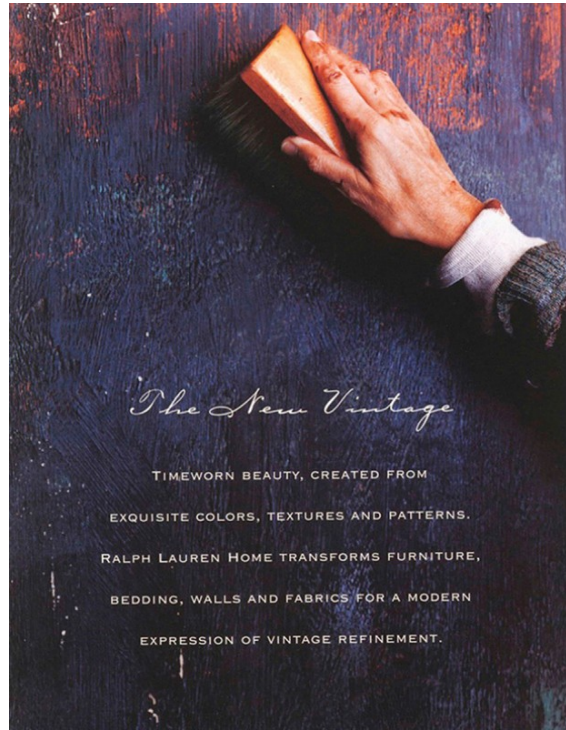
Art Department



Martyn Thompson

www.art-dept.com

Art Department



Martyn Thompson

www.art-dept.com

Art Department

Precious Metal



Perfect pieces in glowing rose gold set the tone for the new season.
Photographs by Martyn Thompson



64

TIFFANY.COM/SPRING



Martyn Thompson

www.art-dept.com

Art Department



ROOM 188
PRIVATE CHARTER TO PRINCES' ISLANDS
TURKISH ROSE JAM
CARDAMOM COFFEE
HOT STONE MASSAGE
SHARPENED #2 PENCILS

PARK HYATT®

MORE THAN 30 EXQUISITE HOTELS WORLDWIDE. FOR RESERVATIONS PLEASE VISIT PARKHYATT.COM.
#MYLUXLIST

LUXURY IS PERSONAL



SUITE 1028
SOFT-BOILED EGGS
8AM CAR TO THE CAPITOL
RESERVATION AT PHILLIPS AFTER 5
CHEF'S TABLE AT BLUE DUCK TAVERN
SECURE PHONE LINE

PARK HYATT®

MORE THAN 30 EXQUISITE HOTELS WORLDWIDE. FOR RESERVATIONS PLEASE VISIT PARKHYATT.COM.
#MYLUXLIST

LUXURY IS PERSONAL

Martyn Thompson

www.art-dept.com

Art Department



SUITE 2203
40-YEAR, SINGLE MALT SCOTCH
DARK CHOCOLATE TRUFFLES
OVERSIZED SOAKING TUB
BACKSTAGE ACCESS AT CARNEGIE HALL
BLANK SHEET MUSIC

PARK HYATT®

MORE THAN 30 EXQUISITE HOTELS WORLDWIDE. FOR RESERVATIONS PLEASE VISIT PARKHYATT.COM.
#MYLUXLIST

LUXURY IS PERSONAL



SUITE 137
JAPANESE MATCHA TEA
PRIVATE TOUR OF MoMA
BITTERS-MAKING MASTERS CLASS
6AM DOG WALKER
RUBBER CHEW TOY

PARK HYATT®

MORE THAN 30 EXQUISITE HOTELS WORLDWIDE. FOR RESERVATIONS PLEASE VISIT PARKHYATT.COM.
#MYLUXLIST

LUXURY IS PERSONAL

Martyn Thompson

www.art-dept.com

Art Department



Martyn Thompson

www.art-dept.com

Art Department



Martyn Thompson

www.art-dept.com

Art Department



ON DISCERNING TASTE

LATE NIGHT DINING

THERE'S SOMETHING WONDERFUL about a late night dinner, when no reservations are needed. The intimacy. The company of insiders. The spontaneous swapping of stories and seats at the table. The impromptu pleasure of lingering over a meal long after the day players have gone to bed.

GREY GOOSE
World's Best Tasting Vodka

GREYGOOSE.COM



MAÎTRE DE CHAI

EXCEPTIONAL TASTE. DISTINCTIVE ORIGINS. A REFINED VISION. ONLY GREY GOOSE VODKA IS DISTILLED UNDER THE MASTERFUL GUIDANCE OF A MAÎTRE DE CHAI. CELLAR MASTER FRANÇOIS THIBAUT'S EXPERTISE IN SPIRIT MAKING FOLLOWS THE CENTURIES OLD TRADITIONS OF THE COGNAC REGION. DISCERNING TASTE IS IN THE DETAILS.

GREYGOOSE.COM

GREY GOOSE
World's Best Tasting Vodka

Enjoy Responsibly.



LA POIRE

FILL GLASS WITH HAND-CHIPPED ICE. Serve on the rocks. GREY GOOSE® Le Poire pear-flavored vodka has been carefully crafted from pears of the Jûpo region of France, creating a distinct balance of freshness and natural pear essence in every pour. The result is a smooth, generous taste, best appreciated as is.

GREYGOOSE.COM

GREY GOOSE
Le Poire

Sip Responsibly.

Martyn Thompson

www.art-dept.com

Art Department



L'ORANGE

GARNISH GLASS WITH A RIND TWIST. Serve on the rocks. GREY GOOSE® L'Orange flavored vodka has been carefully crafted with oranges selected for their superior quality, creating a distinct balance of freshness and natural orange essence in every pour. The result is a full, authentic taste, best appreciated as is.

GREYGOOSE.COM



Sip Responsibly



ON DISCERNING TASTE OYSTERS

BEST ORDERED IN MONTHS that contain the letter "R" and always best when local, bracingly fresh and shared with the table. Sauces and garnish are a matter of personal preference but are best used sparingly. When accompanied by an icy shot, straight up, oysters are a wildly delicious way to satisfy the cocktail hour.

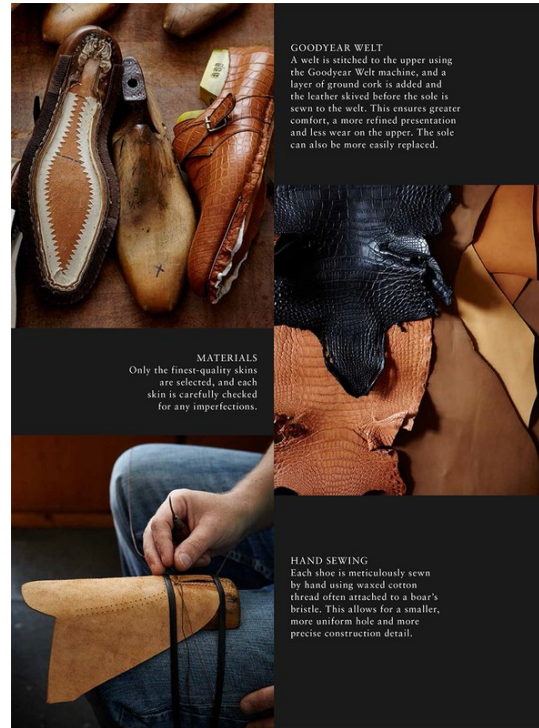
GREYGOOSE.COM

GREY GOOSE
World's Best Tasting Vodka

Martyn Thompson

www.art-dept.com

Art Department



Martyn Thompson

www.art-dept.com

Art Department



GUCCI
GG



Martyn Thompson

www.art-dept.com

Art Department



Martyn Thompson

www.art-dept.com

Art Department



Martyn Thompson

www.art-dept.com

Art Department



Martyn Thompson

www.art-dept.com

Art Department



Martyn Thompson

www.art-dept.com

Art Department



Martyn Thompson

www.art-dept.com

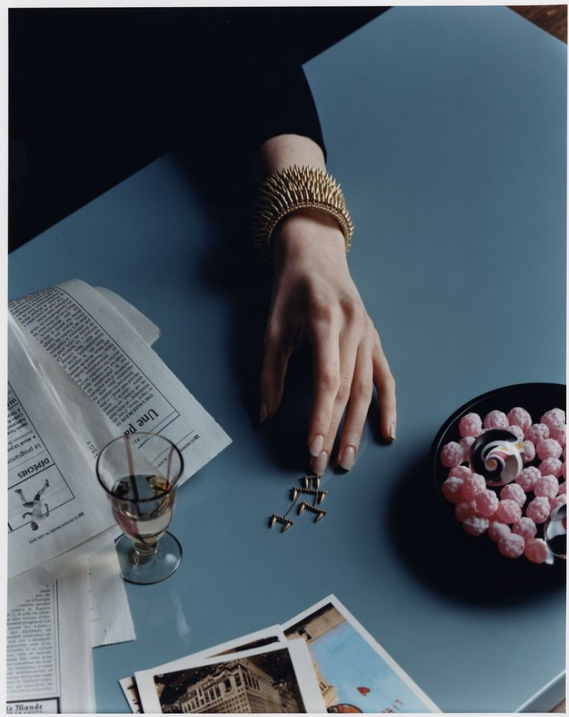
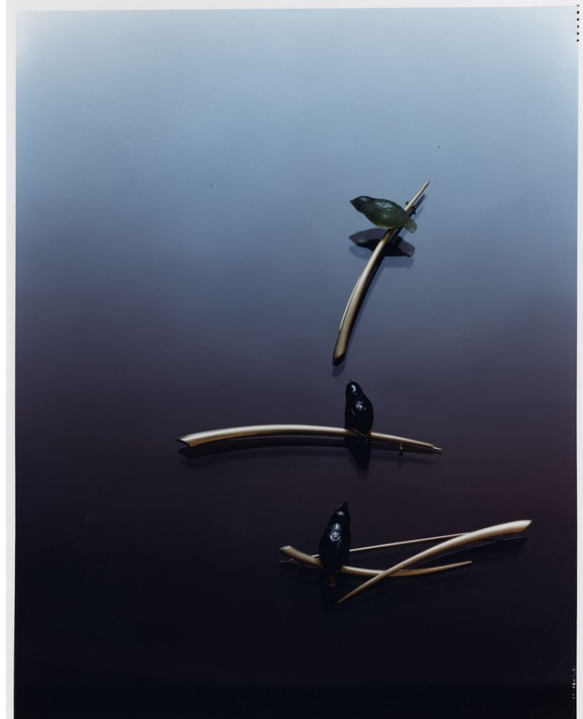
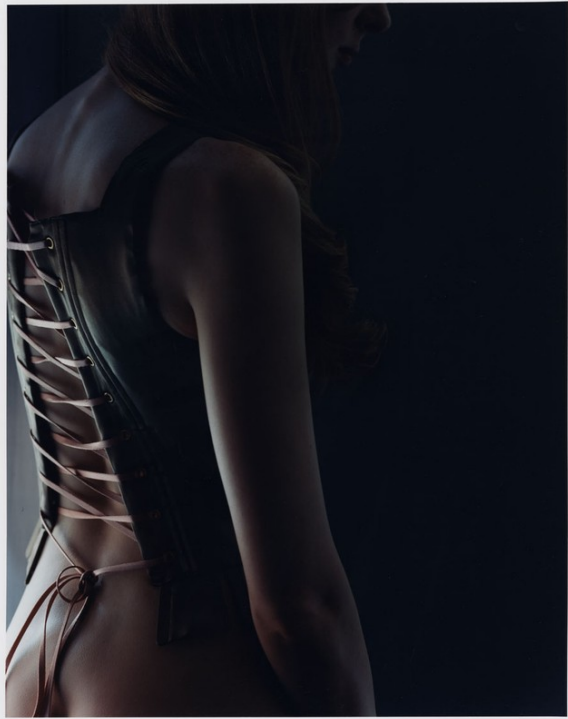
Art Department



Martyn Thompson

www.art-dept.com

Art Department



Martyn Thompson

www.art-dept.com

Art Department



Martyn Thompson

www.art-dept.com

Art Department



Martyn Thompson

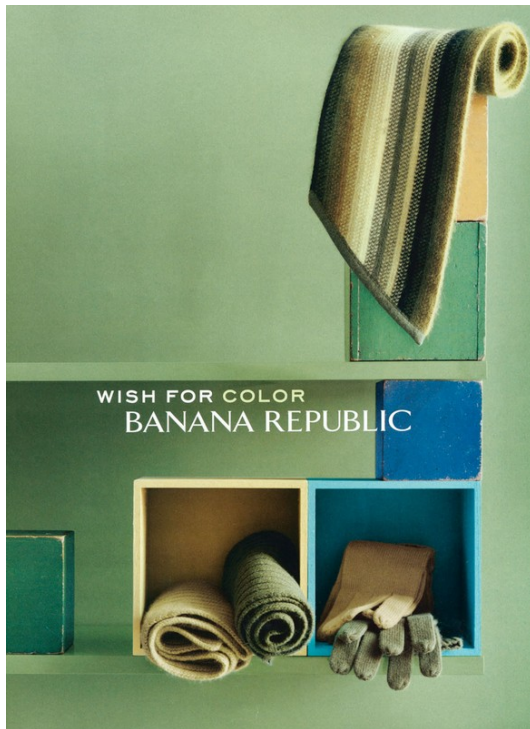
www.art-dept.com

A collection of art supplies and a drawing. In the foreground, a drawing on lined paper features a large, smiling sun with a yellow face, black eyebrows, and a wide smile, surrounded by blue and green rays. Below the sun is a colorful butterfly with orange, blue, and black wings. To the left of the butterfly is a red heart and a blue and yellow flower. Further left is a red umbrella with a black handle and a small figure sitting under it. The drawing is surrounded by various art supplies: a watercolor palette with yellow, orange, and red paints; several pens and pencils in blue, orange, and purple; and a glass jar. The background is a wooden surface.



www.art-dept.com

Art Department



Martyn Thompson

www.art-dept.com

Art Department



Martyn Thompson

www.art-dept.com

Art Department



Martyn Thompson

www.art-dept.com