

Art Department



James White

www.art-dept.com

Art Department



James White

www.art-dept.com

Art Department



James White

www.art-dept.com

Art Department



James White

www.art-dept.com

Art Department



James White

www.art-dept.com

Art Department



James White

www.art-dept.com

Art Department



James White

www.art-dept.com

Art Department



INTIMATES

HEATHER KEMESKY

The California child and Louis Vuitton favourite.

PHOTOGRAPHY Nick Hudson FASHION Diana Lust WORDS Andrea Tibazon



James White

www.art-dept.com

Art Department



James White

www.art-dept.com

Art Department



James White

www.art-dept.com

Art Department



Black and white | Hugo Boss



Black and white | James White

James White

www.art-dept.com

Art Department



James White

www.art-dept.com

Art Department



James White

www.art-dept.com

Art Department



James White

www.art-dept.com

Art Department



James White

www.art-dept.com

Art Department



James White

www.art-dept.com

Art Department



James White

www.art-dept.com

Art Department



Robe à manches longues en
coton de couleur blanche, boutons
en cuir, fermeture à double boutonnage.
Pajama de chambre, pull en coton,
en couleur blanche, boutons en cuir
et fermeture à double boutonnage.



James White

www.art-dept.com

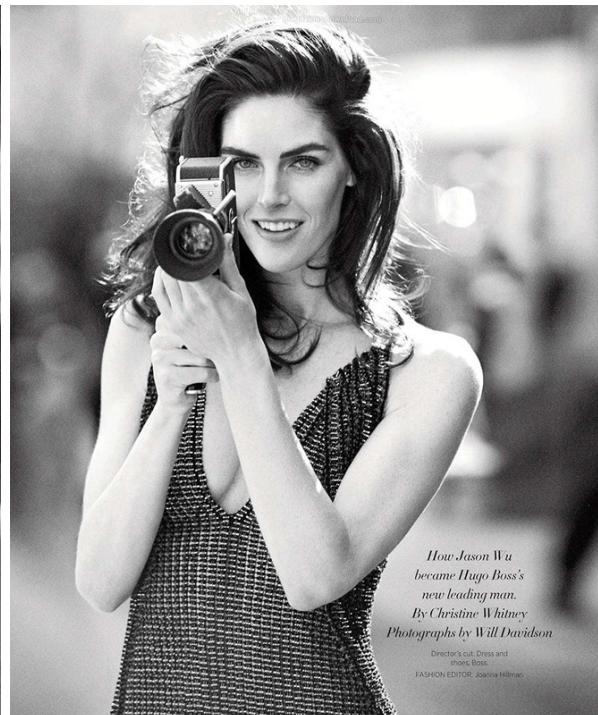
Art Department



James White

www.art-dept.com

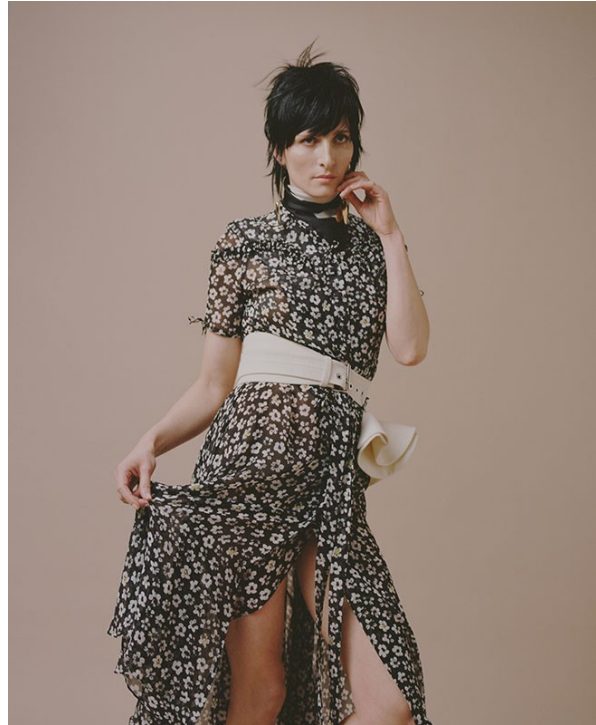
Art Department



James White

www.art-dept.com

Art Department



James White

www.art-dept.com

Art Department



James White

www.art-dept.com

Art Department



James White

www.art-dept.com

Art Department



Light of the Day

photography
Amy Troost

fashion
Delphine Danhier



James White

www.art-dept.com

Art Department



James White

www.art-dept.com

Art Department



James White

www.art-dept.com

Art Department



James White

www.art-dept.com

Art Department



136



137



James White

www.art-dept.com

Art Department



James White

www.art-dept.com

Art Department



James White

www.art-dept.com

Art Department



James White

www.art-dept.com

Art Department



James White

www.art-dept.com

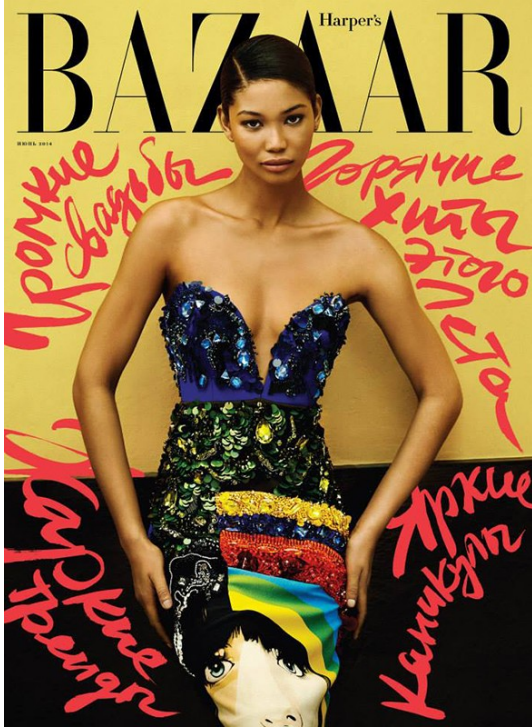
Art Department



James White

www.art-dept.com

Art Department



James White

www.art-dept.com

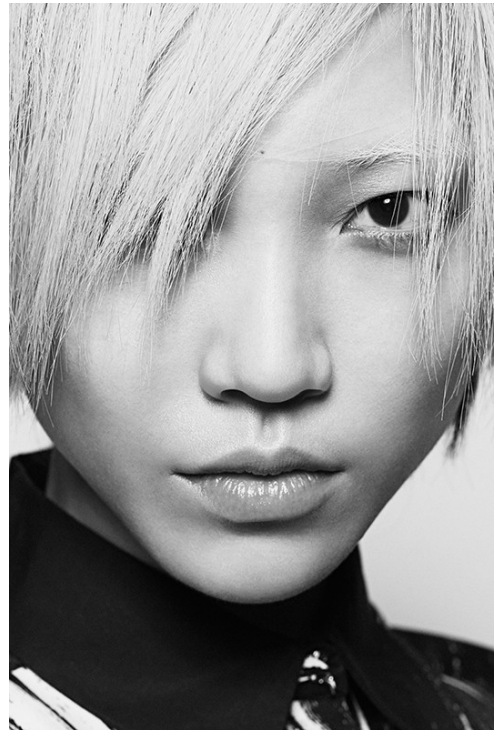
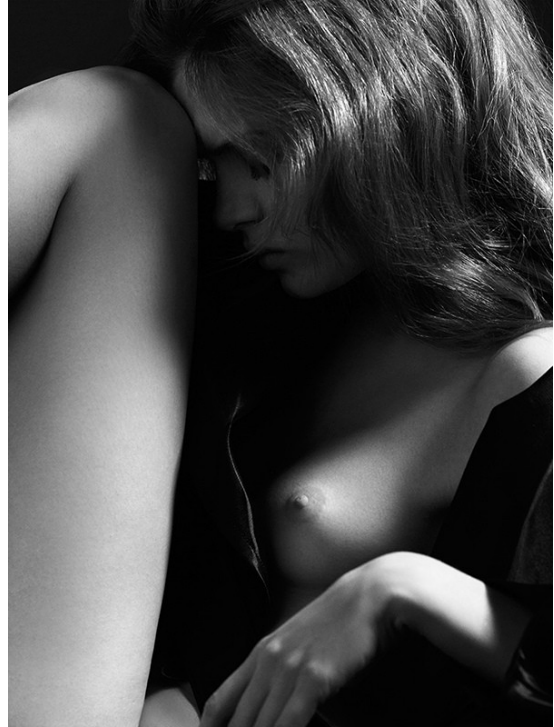
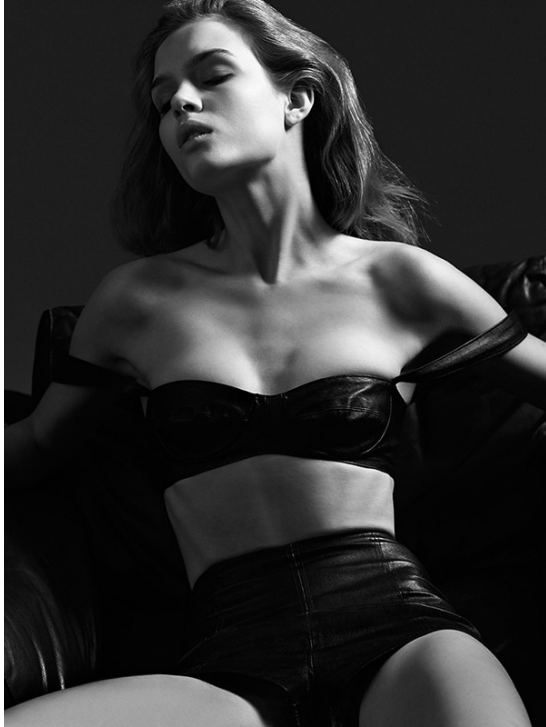
Art Department



James White

www.art-dept.com

Art Department



James White

www.art-dept.com

Art Department



James White

www.art-dept.com

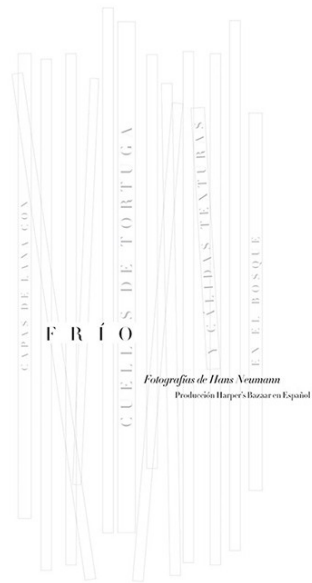
Art Department



James White

www.art-dept.com

Art Department



Coordinación
de moda Catherine
Newell-Hanson.
Sutén y suéter
oversize,
Stella McCartney.



James White

www.art-dept.com

Art Department



James White

www.art-dept.com

Art Department



James White

www.art-dept.com

Art Department



James White

www.art-dept.com

Art Department



James White

www.art-dept.com

Art Department



James White

www.art-dept.com

Art Department



James White

www.art-dept.com

Art Department



James White

www.art-dept.com

Art Department



James White

www.art-dept.com

Art Department



James White

www.art-dept.com

Art Department



James White

www.art-dept.com

Art Department



James White

www.art-dept.com