

Art Department



Douglas Friedman

www.art-dept.com

Art Department



THE CLIENTS' OWN CRYSTAL CHANDELIERS CROWN THE ENTERTAINMENT BAR, WHERE THE GLASS SLIDERS STRETCH 14 FEET TALL. THE CUSTOM SOPH is COVERED IN PINOLEX OUTDOOR FABRIC.

he's from Iowa; she was born in Ukraine—dug a well on the property to irrigate the land, planted (and harvested) a field of corn during the COVID lockdowns, and dubbed the place Kucuk Farms. But while Jed, Grammy, and the rest of the Clampetts embraced a far more traditional take on Beverly Hills splendor—the sprawling French Neoclassical mansion pictured in the series credits was designed by architect Sumner Spaulding in the early 1930s and renovated by the legendary designer Henri Samuel in the 1980s—Kutcher and Kunis approached their passion project from a decidedly more modest perspective. “We wanted a home, not an estate,” Kunis insists, describing the six-acre property that now accommodates a main house connected to a greenhouse/entertainment barn, as well as a freestanding barbecue pavilion, all arrayed along a central axis

elaborately plotted to capture the beguiling views from, between, and through the various structures. “We wanted the house to look like an old barn, something that had been here for decades, that was then converted into a house. But it also had to feel modern and relevant,” Kutcher elaborates. The design-obsessed duo launched their five-year adventure by assembling independent Pinterest boards to flesh out their personal visions for the project. “Building a house from the ground up is no small thing. This was either going to make us or break us,” Kunis says of the potentially divisive undertaking. Happily, their aesthetic predilections seemed to dovetail neatly. “When we looked at each other’s boards, 90 percent of the images we selected were the same, and most of the houses we pinned were designed by Howard,” Kutcher recalls, referring to architect Howard Backen of the AD2000 firm Backen & Gillan Architects. Backen, of course, is a master of the so-called modern farmhouse, renowned for his ability to coax a sense of poetry and a bright, contemporary spirit from distilled vernacular forms and rustic materials. The Kutcher/Kunis residence is a testament to his alchemical handling of reclaimed wood,



HECTOR FINCH PENDANTS ILLUMINATE THE BREAKFAST COOK KITCHEN BY DEVCO. FLOOR TILES BY TABARNA STUDIO. FIXTURES BY PERINIA & POWELL. LIGHT ABOVE THE ISLAND IS MADE BY APPARATUS. BELOW THE ISLAND IS A TABLE ON THE WALLS AND TABARNA STUDIO TILES ON THE FLOOR.

board-form concrete, and glass. “Howard is like a great software designer, someone who approaches design as an accentuation of function,” says Kutcher, who has broad experience in technology start-ups. “A software designer wants to get people where they want to be with the fewest clicks. Howard wants to get you where you want to be with the fewest doors and obstacles. He also knows that there are certain places where you want a barrier to mark a threshold and create a little friction,” Kutcher adds. For his part, Backen returns the compliment. “Ashton and Mila are two of the smartest, most inquisitive people we’ve ever worked with. We talked about everything from beam sizes to the details of the cross bracing to the junctures of the wood planks and concrete. These are not the kinds of conversations we have with every client,” says the architect. Stephanie Gerwin, Backen’s associate, seconds the notion. “They were out there with us, as genuine members of the design team, for every step of this long and complicated process,” she notes, emphasizing the couple’s commitment to creating a sustainable, nurturing home for themselves and their two young children, Wyatt and Dimitri. The house is entirely



80 ARCHDIGEST.COM



SIGHT LINES EXTEND FROM THE BARBECUE PAVILION, ACROSS THE POOL, AND THROUGH THE MAIN HOUSE.

“Building a house from the ground up is no small thing,” Kunis says. “This was either going to make us or break us.”

Douglas Friedman

www.art-dept.com

Art Department



ABOVE THE PRIMARY BATH HAS A DRUMMONDS TUB, GEORGE SMITH OTTOMAN, CORAGGIO SHEREN, AND A BLAKE THURNE CHAIR, CUSTOM DESIGNED BY KUTCHER ON A TRIP TO INDIA.



LEFT IN A STUDY JUST OFF THE PRIMARY BEDROOM, A GEORGE SMITH SOFA WITH CUSHIONS IN ZAKAYOK TEXTILES IS JOINED BY STAN, A BANG CHAIR, A BANG HOME TABLE, AND AN ALLED HAMER SCENE.



RIGHT AN INTRATE COURTYARD HAS VIEWS THROUGH THE HOUSE AND OUT TO THE PANORAMIC HILLSIDE SITE.



ABOVE LOOKING OUT ACROSS THE VOLUNTEER ENTERTAINMENT BARN, A GUEST ROOM HAS A CROCK HORN BED AND OPTIONAL BED AND OPTIONAL LAMP. RIGHT AN 8M TEEN LAMP HANGS IN THE GUEST BUNK ROOM.



AT ONE END OF THE OPEN LIVING-DINING ROOM, A MATTHEW COX TABLE WITH STAINL- BAND CHAIRS RESTS ON AN ANTIQUE RUG FROM WOVEN A DE LA ESPANA DESK WITH A VINTAGE LAMP FROM OBSCURE SITS IN THE CORNER.

powered by photovoltaics, concealed from view above the expansive porch that stretches along one side of the main structure. In fact, the house's solar array produces significantly more power than the property requires, although antiquated municipal codes don't exactly encourage energy sharing—a situation the homeowners hope will change in the future. "Arlton and Mita are concerned about the quality of the soil, the purity of the food they eat and the water they drink. The ideals of sustainability and regenerative farming aren't just abstract concepts to them," Backen avers.

THE HOUSE'S REFINED architectural vocabulary and rugged materials palette provided a springboard for the work of AHD00 interior designer Vicky Charles of Charles & Co, who joined the project just as she was exiting her post as a global head of design for Soho House. "We were obsessed with Soho Farmhouse and other projects Vicky spearheaded. We loved the way she mixed fabrics, patterns, textures—really her whole aesthetic," Komis says.

"Mita was pregnant with their first child when we began this journey. We spent months looking at materials and colors to find the right visual language. Our conversations were not just about the land and the architecture but also about the future of their family," Charles recalls. "Over time, the design moved away from a traditional farmhouse aesthetic to

something more contemporary. Wrought-iron chandeliers and big chestnut tables were the wrong clothes for this body," she adds.

In addition to new, crisply tailored tables and plush, super-comfortable seating, Charles incorporated elements from her clients' previous homes, notably a set of custom silver throne chairs that Kutcher commissioned on a trip to India and an extravagant 10-foot-long crystal chandelier that seemed completely antithetical to the architect's humble forms and timeworn materials. "I got this job because I promised I could make a home for those, shall we say, formidable pieces," Charles jokes. Ultimately she placed a pair of chairs in the primary bath—thrones for the throne room—and installed the chandelier in the towering entertainment pavilion. "We thought it would be funny to have this incredibly opulent thing hanging in a barn. It kind of takes the piss out of the property," Komis says of the improbable crystal confection.

Notwithstanding those notes of self-effacing levity, the soul of the Kutcher/Komis residence remains tied to the meticulous planning and fanatical attention to detail that the homeowners and their designers lavished on every aspect of the project. "To feel tranquility in a space, everything needs to be in order," Kutcher concludes. "If the world around you isn't in order, it's hard to get your brain in order. When we're in our home, the world just makes sense." ▀



"We wanted the house to look like an old barn, something that had been here for decades, that was then converted into a house," Kutcher notes.

MONTAUX ACQUIS AMERICAN STANDING LAMP AND AN ANTIQUE RUG FROM WOVEN AGAINST THE LIVING ROOM, WHERE THE SEAMS OF BOND-TORN COFFEE-WALLS ARE PERFECTLY PAINTED WITH RECLAIMED-OAK FLOOR PLANKS.

Douglas Friedman

www.art-dept.com

Art Department



Douglas Friedman

www.art-dept.com

Art Department



Douglas Friedman

www.art-dept.com

Art Department



Douglas Friedman

www.art-dept.com

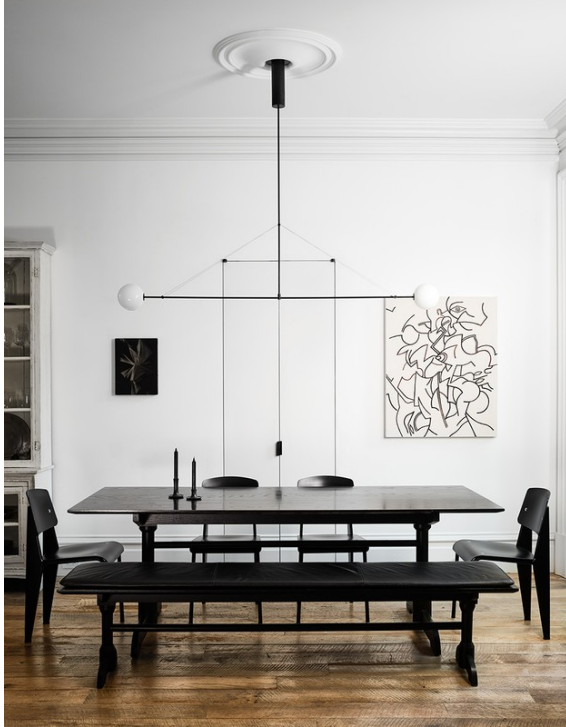
Art Department



Douglas Friedman

www.art-dept.com

Art Department



Douglas Friedman

www.art-dept.com

Art Department



Douglas Friedman

www.art-dept.com

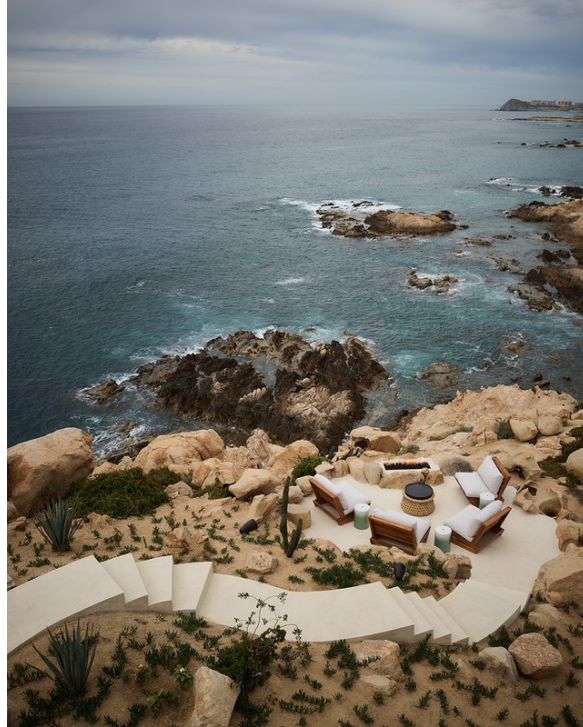
Art Department



Douglas Friedman

www.art-dept.com

Art Department



Douglas Friedman

www.art-dept.com

Art Department



Douglas Friedman

www.art-dept.com

Art Department



Douglas Friedman

www.art-dept.com

Art Department



Douglas Friedman

www.art-dept.com

Art Department



Douglas Friedman

www.art-dept.com

Art Department



Douglas Friedman

www.art-dept.com

Art Department



Douglas Friedman

www.art-dept.com

Art Department



After jetting around the globe to document the lifestyles of the rich and famous, photographer *Douglas Friedman* takes refuge on an otherworldly site in Marfa, Texas

TEXT BY MAYER RUS PHOTOGRAPHY BY DOUGLAS FRIEDMAN STYLED BY MICHAEL REYNOLDS

home on the range



Douglas Friedman

www.art-dept.com

Art Department



Douglas Friedman

www.art-dept.com

Art Department



Douglas Friedman

www.art-dept.com

Art Department



Douglas Friedman

www.art-dept.com

Art Department



Douglas Friedman

www.art-dept.com

Art Department



Douglas Friedman

www.art-dept.com

Art Department



Douglas Friedman

www.art-dept.com

Art Department



Douglas Friedman

www.art-dept.com

Art Department



Douglas Friedman

www.art-dept.com

Art Department



Douglas Friedman

www.art-dept.com

Art Department



Douglas Friedman

www.art-dept.com

Art Department



Douglas Friedman

www.art-dept.com

Art Department



Douglas Friedman

www.art-dept.com

Art Department



Douglas Friedman

www.art-dept.com

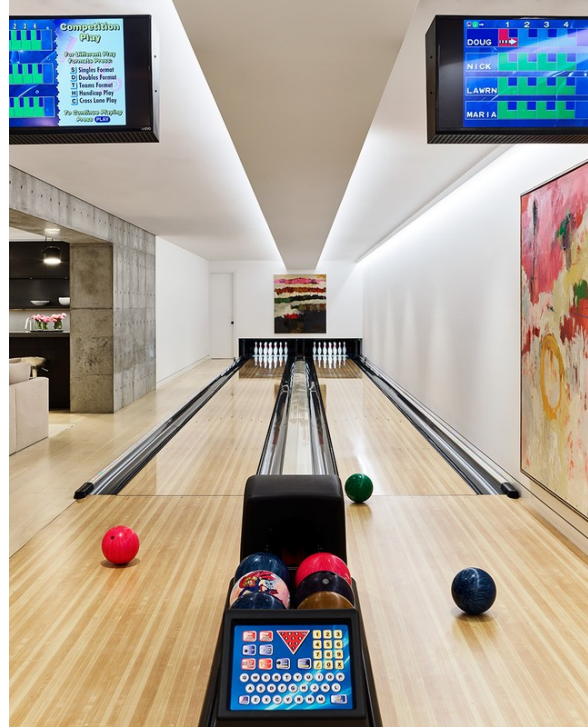
Art Department



Douglas Friedman

www.art-dept.com

Art Department



Douglas Friedman

www.art-dept.com

Art Department



Douglas Friedman

www.art-dept.com

Art Department



Douglas Friedman

www.art-dept.com

Art Department



Douglas Friedman

www.art-dept.com

Art Department



Douglas Friedman

www.art-dept.com

Art Department



Douglas Friedman

www.art-dept.com

Art Department



Douglas Friedman

www.art-dept.com

Art Department



Douglas Friedman

www.art-dept.com

Art Department



Douglas Friedman

www.art-dept.com

Art Department



Douglas Friedman

www.art-dept.com

Art Department



Douglas Friedman

www.art-dept.com

Art Department



Douglas Friedman

www.art-dept.com

Art Department



Douglas Friedman

www.art-dept.com

Art Department



Douglas Friedman

www.art-dept.com

Art Department



Douglas Friedman

www.art-dept.com

Art Department



Douglas Friedman

www.art-dept.com

Art Department



Douglas Friedman

www.art-dept.com

Art Department



Douglas Friedman

www.art-dept.com

Art Department



Douglas Friedman

www.art-dept.com

Art Department



Douglas Friedman

www.art-dept.com

Art Department



Douglas Friedman

www.art-dept.com

Art Department



Douglas Friedman

www.art-dept.com

Art Department



Douglas Friedman

www.art-dept.com

Art Department



Douglas Friedman

www.art-dept.com

Art Department



Douglas Friedman

www.art-dept.com

Art Department



Douglas Friedman

www.art-dept.com

Art Department



Douglas Friedman

www.art-dept.com

Art Department



Douglas Friedman

www.art-dept.com

Art Department



Douglas Friedman

www.art-dept.com

Art Department



Douglas Friedman

www.art-dept.com

Art Department



Douglas Friedman

www.art-dept.com

Art Department



Douglas Friedman

www.art-dept.com

Art Department



Douglas Friedman

www.art-dept.com

Art Department



Douglas Friedman

www.art-dept.com

Art Department



Douglas Friedman

www.art-dept.com

Art Department



Douglas Friedman

www.art-dept.com

Art Department



Douglas Friedman

www.art-dept.com

Art Department



Douglas Friedman

www.art-dept.com

Art Department



Douglas Friedman

www.art-dept.com

Art Department



Douglas Friedman

www.art-dept.com

Art Department



Douglas Friedman

www.art-dept.com

Art Department



Douglas Friedman

www.art-dept.com

Art Department



Douglas Friedman

www.art-dept.com

Art Department



Douglas Friedman

www.art-dept.com

Art Department



Douglas Friedman

www.art-dept.com

Art Department



Douglas Friedman

www.art-dept.com

Art Department



Douglas Friedman

www.art-dept.com

Art Department



Douglas Friedman

www.art-dept.com

Art Department



Douglas Friedman

www.art-dept.com

Art Department



Douglas Friedman

www.art-dept.com

Art Department



Douglas Friedman

www.art-dept.com

Art Department



Douglas Friedman

www.art-dept.com

Art Department



Douglas Friedman

www.art-dept.com

Art Department



Douglas Friedman

www.art-dept.com

Art Department



Douglas Friedman

www.art-dept.com

Art Department



Douglas Friedman

www.art-dept.com

Art Department



Douglas Friedman

www.art-dept.com

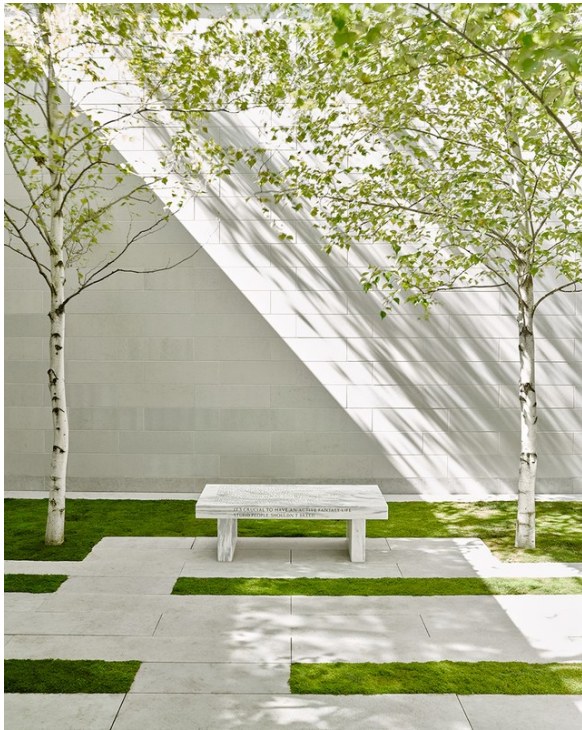
Art Department



Douglas Friedman

www.art-dept.com

Art Department



Douglas Friedman

www.art-dept.com

Art Department



Douglas Friedman

www.art-dept.com

Art Department



Douglas Friedman

www.art-dept.com

Art Department



Douglas Friedman

www.art-dept.com

Art Department



Douglas Friedman

www.art-dept.com

Art Department



Douglas Friedman

www.art-dept.com

Art Department



Douglas Friedman

www.art-dept.com

Art Department



Douglas Friedman

www.art-dept.com

Art Department



Douglas Friedman

www.art-dept.com

Art Department



Douglas Friedman

www.art-dept.com

Art Department



Douglas Friedman

www.art-dept.com

Art Department



Douglas Friedman

www.art-dept.com

Art Department



Douglas Friedman

www.art-dept.com

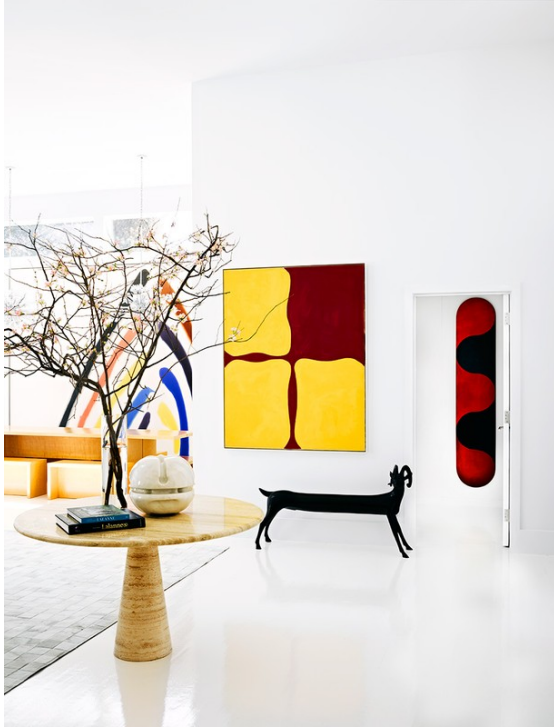
Art Department



Douglas Friedman

www.art-dept.com

Art Department



Douglas Friedman

www.art-dept.com

Art Department



Douglas Friedman

www.art-dept.com

Art Department



Douglas Friedman

www.art-dept.com

Art Department



Douglas Friedman

www.art-dept.com

Art Department



Douglas Friedman

www.art-dept.com

Art Department



Douglas Friedman

www.art-dept.com

Art Department



Douglas Friedman

www.art-dept.com

Art Department



Douglas Friedman

www.art-dept.com

Art Department



Douglas Friedman

Art Department



Douglas Friedman

www.art-dept.com

Art Department



Douglas Friedman

www.art-dept.com

Art Department



Douglas Friedman

www.art-dept.com

Art Department



Douglas Friedman

www.art-dept.com

Art Department



Douglas Friedman

www.art-dept.com

Art Department



Douglas Friedman

www.art-dept.com

Art Department



Douglas Friedman

www.art-dept.com

Art Department



Douglas Friedman

Art Department



Douglas Friedman

www.art-dept.com

Art Department



Douglas Friedman

www.art-dept.com

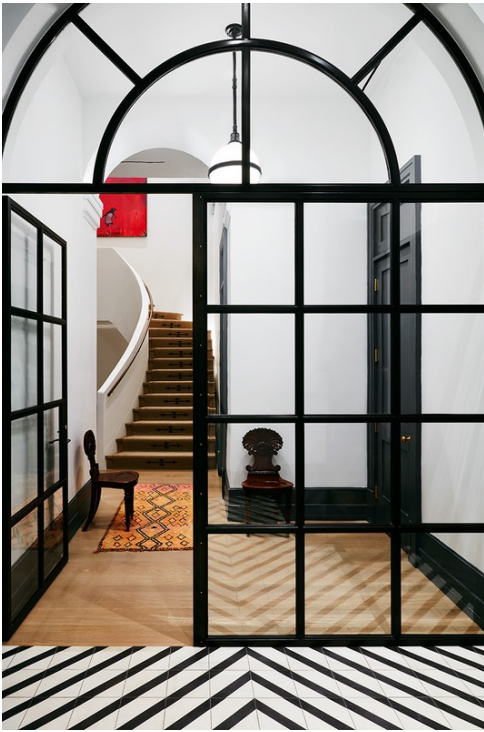
Art Department



Douglas Friedman

www.art-dept.com

Art Department



Douglas Friedman

www.art-dept.com

Art Department



Douglas Friedman

www.art-dept.com

Art Department



Douglas Friedman

www.art-dept.com

Art Department



Douglas Friedman

www.art-dept.com

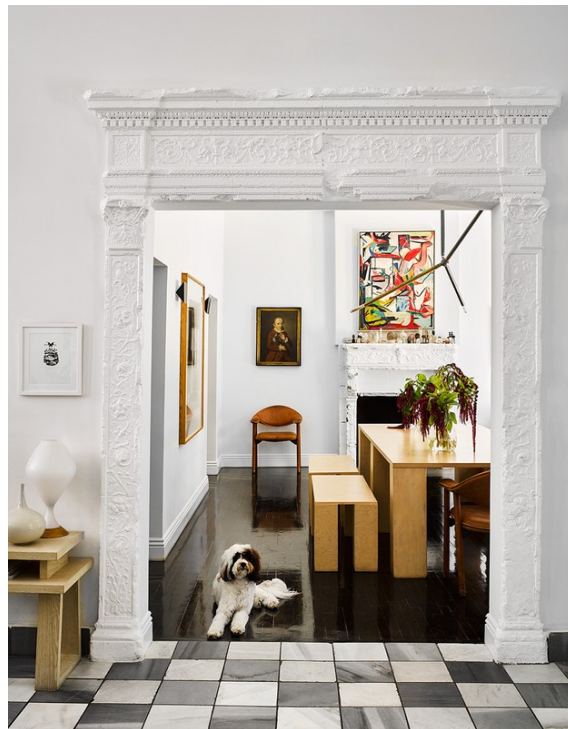
Art Department



Douglas Friedman

www.art-dept.com

Art Department



Douglas Friedman

www.art-dept.com

Art Department



Douglas Friedman

www.art-dept.com

Art Department



Douglas Friedman

www.art-dept.com

Art Department



Douglas Friedman

www.art-dept.com

Art Department



Douglas Friedman

www.art-dept.com

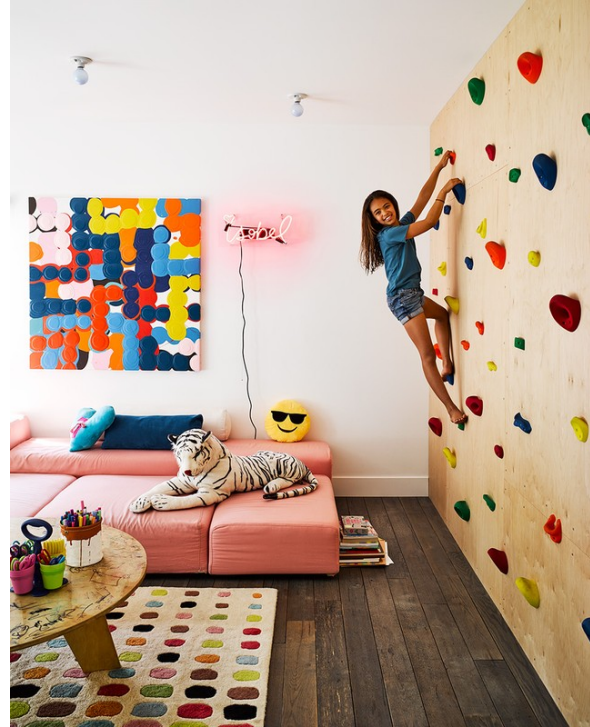
Art Department



Douglas Friedman

www.art-dept.com

Art Department



Douglas Friedman

www.art-dept.com

Art Department



Douglas Friedman

www.art-dept.com

Art Department



Douglas Friedman

www.art-dept.com

Art Department



Douglas Friedman

www.art-dept.com

Art Department



Douglas Friedman

www.art-dept.com

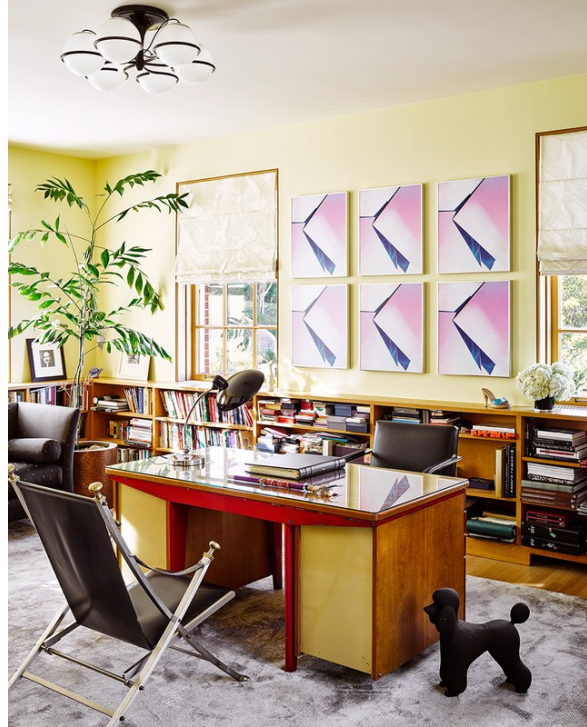
Art Department



Douglas Friedman

www.art-dept.com

Art Department



Douglas Friedman

www.art-dept.com

Art Department



Douglas Friedman

www.art-dept.com

Art Department



Douglas Friedman

www.art-dept.com

Art Department



Douglas Friedman

www.art-dept.com

Art Department



Douglas Friedman

www.art-dept.com

Art Department



Douglas Friedman

www.art-dept.com

Art Department



Douglas Friedman

www.art-dept.com

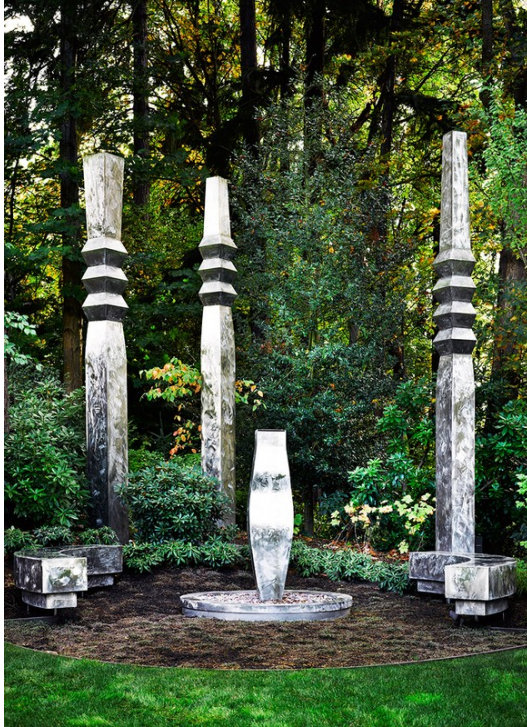
Art Department



Douglas Friedman

www.art-dept.com

Art Department



Douglas Friedman

www.art-dept.com

Art Department



Douglas Friedman

www.art-dept.com

Art Department



Douglas Friedman

Art Department



Douglas Friedman

www.art-dept.com

Art Department



Douglas Friedman

www.art-dept.com