

Art Department

The image is a full-page magazine cover for BAZAAR BEAUTY. It features a woman, Tomoyo Pattou, reclining on a large, tufted, reddish-brown leather armchair. She is wearing a light blue, sleeveless, form-fitting dress with a subtle pattern. Her arms are raised, and her hands are clasped behind her head. She has a serene expression. The background is a soft, hazy blue, suggesting an outdoor setting like a beach or a large room with a view of the ocean. The lighting is warm and directional, coming from the upper right, creating a soft glow on her skin and the chair. The magazine title 'BAZAAR' is in large, white, serif capital letters at the top, with 'BEAUTY' in a smaller, italicized serif font below it. In the bottom right corner, the title 'HOME SANCTUARY' is written in large, white, serif capital letters. Below this, there is a paragraph of Thai text. At the bottom left, there is small text in Thai. At the bottom right, there is more text in English, including credits for the photographer, director, story writer, and stylist. The overall mood is relaxed and sophisticated.

BAZAAR
BEAUTY

HOME
SANCTUARY

ชีวิตของเราทุกวันนี้เต็มไปด้วยไลฟ์สไตล์ที่ไม่เคยหยุดนิ่ง
แต่หลังจากที่เราใช้พลังไปกับโลกภายนอกมาตลอดวัน ไม่มีอะไร
ดีไปกว่าการกลับบ้านแล้วได้ผ่อนคลายตัวเอง

เดอร์ส Tom Ford แต่งผม และ
สรวัยคอง Tiffany & Co.

Photographs & Director by Ricardo Beas
Story by Natkritta Gaysornmasmani
Styling by Suthee Jonasson

Tomoyo Pattou

www.art-dept.com

Art Department



Tomoyo Pattou

www.art-dept.com

Art Department



Tomoyo Pattou

www.art-dept.com

Art Department



Tomoyo Pattou

www.art-dept.com

Art Department



Tomoyo Pattou

www.art-dept.com

Art Department



Tomoyo Pattou

www.art-dept.com

Art Department



Tomoyo Pattou

www.art-dept.com

Art Department



Tomoyo Pattou

www.art-dept.com

Art Department

ELLE SPIRIT

DIVAT | INSPIRÁCIO | STILUS | TREND

style



FOTOFOTO: SAMRA FLEUR ABQUELHAU

TELIESET SET: CHANEL

89

Tomoyo Pattou

www.art-dept.com

Art Department



Tomoyo Pattou

www.art-dept.com

Art Department



Tomoyo Pattou

www.art-dept.com

Art Department

NO. 20

SUSTAINABILITY & ETHICAL PRODUCTION

SSFW 24/25

O N E



Tomoyo Pattou

www.art-dept.com

Art Department



Tomoyo Pattou

www.art-dept.com

Art Department



Tomoyo Pattou

www.art-dept.com

Art Department



Tomoyo Pattou

www.art-dept.com

Art Department



Tomoyo Pattou

www.art-dept.com

Art Department



Tomoyo Pattou

www.art-dept.com

Art Department



Tomoyo Pattou

www.art-dept.com

Art Department



Tomoyo Pattou

www.art-dept.com

Art Department



Tomoyo Pattou

www.art-dept.com

Art Department



Tomoyo Pattou

www.art-dept.com

Art Department



Tomoyo Pattou

www.art-dept.com

Art Department



Tomoyo Pattou

www.art-dept.com

Art Department



Tomoyo Pattou

www.art-dept.com

Art Department



Tomoyo Pattou

www.art-dept.com

Art Department



Tomoyo Pattou

www.art-dept.com

Art Department



Tomoyo Pattou

www.art-dept.com

Art Department



Tomoyo Pattou

www.art-dept.com

Art Department



Tomoyo Pattou

www.art-dept.com

Art Department



Tomoyo Pattou

www.art-dept.com

Art Department



Tomoyo Pattou

www.art-dept.com

Art Department



Tomoyo Pattou

www.art-dept.com

Art Department



Tomoyo Pattou

www.art-dept.com

Art Department



Tomoyo Pattou

www.art-dept.com

Art Department



Tomoyo Pattou

www.art-dept.com

Art Department



Tomoyo Pattou

www.art-dept.com

Art Department



Tomoyo Pattou

www.art-dept.com

Art Department



Tomoyo Pattou

www.art-dept.com

Art Department



Tomoyo Pattou

www.art-dept.com

Art Department



Tomoyo Pattou

www.art-dept.com

Art Department



Tomoyo Pattou

www.art-dept.com

Art Department



Tomoyo Pattou

www.art-dept.com

Art Department



Tomoyo Pattou

www.art-dept.com

Art Department



Tomoyo Pattou

www.art-dept.com

Art Department



Tomoyo Pattou

www.art-dept.com

Art Department



Tomoyo Pattou

www.art-dept.com

Art Department



Tomo Patti

www.art-dept.com

Art Department



Tomoyo Pattou

www.art-dept.com

Art Department



Tomoyo Pattou

www.art-dept.com

Art Department



Tomoyo Pattou

www.art-dept.com

Art Department



Tomoyo Pattou

www.art-dept.com

Art Department



Tomoyo Pattou

www.art-dept.com

Art Department



Tomoyo Pattou

www.art-dept.com

Art Department



Tomoyo Pattou

www.art-dept.com

Art Department



Tomoyo Pattou

www.art-dept.com

Art Department

DAILY EDITION OCTOBER 11, 2022

WWD

Fashion. Beauty. Business.

Thom's CFDA Turn

Thom Browne has been named chairman of the CFDA, effective Jan. 1.

Page 2

Chanel's Choice

In a new initiative, Chanel has tapped three global creative makeup partners.

Page 6

That's a Wrap

L.A. Fashion Week won plaudits, while designers and celebs partied into the wee hours.

Pages 37 and 39

Twisting Tradition

To kick off New York Luxury Bridal Fashion Week, which runs Tuesday through Friday with a full schedule of in-person events, WWD previews the upcoming season's modern wedding fare, such as Sareh Nouri's Italian stretch mikado gown with detachable overskirt, worn with bridal accessories label Monvieve's headpiece, Wempe's diamond earrings, diamond chain bracelets and diamond ring and De Beers' diamond rings. For more, see pages 7 to 30.

PHOTOGRAPH BY RICARDO BEAS
STYLED BY ALEX BADIA

Tomoyo Pattou

www.art-dept.com

Art Department



Tomoyo Pattou

www.art-dept.com

Art Department



Tomoyo Pattou

www.art-dept.com

Art Department



Tomoyo Pattou

www.art-dept.com

Art Department



ELLE

**MO-
DA**

**90. CICLOS NUEVOS
98. ANCORA,
ANCORA,
ANCORA 108.
GLAM, AS IN
GLAMOROUS**

foto: ANAIRAM.
look total, GEORGES HOBEIKA.

89

Tomoyo Pattou

www.art-dept.com

Art Department



Tomoyo Pattou

www.art-dept.com

Art Department



Tomoyo Pattou

www.art-dept.com

Art Department



Tomoyo Pattou

www.art-dept.com

Art Department



Tomoyo Pattou

www.art-dept.com

Art Department



Tomoyo Pattou

www.art-dept.com

Art Department



Tomoyo Pattou

www.art-dept.com

Art Department



Flash Art
THE ALWAYS ALREADY

Flash Art
NO. 344 FALL 2023
THE ALWAYS ALREADY

PRECIOUS OKOYOMON
in conversation with JAZMINA FIGUEROA
photographed by ROB KULISEK

ART & LANGUAGE
RHEA DILLON
NIKITA GALE
RORY PILGRIM WITH CAROL R. KALLEND
SOIL THORNTON
WANGSHUI
ISSY WOOD

+ SEMIOFUCK EPILOGUE by ARMATURE GLOBALE
+ THE CURIST FREDDIE POWELL on GINNY ON FREDERICK, LONDON
+ CRITIC DISPATCH POSTPOSTPOST

Issue 344 vol. 56
FALL 2023
ISSN 0394-1493

EU €18,00
UK £14,95
USA \$19,95

POSTE ITALIANE SPA SPEDIZIONE A.P. - D.L. 353/2003 (CONVERTITO IN LEGGE 27/02/2004 N° 46) ART. 1, COMMA 1 LO/MI

Tomoyo Pattou

www.art-dept.com

Art Department



Tomoyo Pattou

www.art-dept.com

Art Department



Tomoyo Pattou

www.art-dept.com

Art Department



Tomoyo Pattou

www.art-dept.com

Art Department



Tomoyo Pattou

www.art-dept.com

Art Department



Tomoyo Pattou

www.art-dept.com

Art Department



Gia wears dress LUAR
All accessories MARC JACOBS
Beauty Tip:
For a pretty and pink lip, try GLOSSIER
G Suit Soft Touch Lip Creme in Plot

Tomoyo Pattou

www.art-dept.com

Art Department



Tomoyo Pattou

www.art-dept.com

Art Department



Tomoyo Pattou

www.art-dept.com

Art Department



Tomoyo Pattou

www.art-dept.com

Art Department



Tomoyo Pattou

www.art-dept.com

Art Department



Tomoyo Pattou

www.art-dept.com

Art Department



Tomoyo Pattou

www.art-dept.com

Art Department



Tomoyo Pattou

www.art-dept.com

Art Department



Tomoyo Pattou

www.art-dept.com

Art Department



Photography DAMIEN ROPERO
Fashion EMMA OLECK

VNEWS

Crank up the vestriary volume and thrash out to this season's hottest releases—equal parts classic and coquettish. From sliced-up baby doll dresses to punky pumps and velvet-coated arm candy, one of these showstoppers *might* just be the mic-drop your wardrobe's been waiting for all along

Tess wears watch and necklace TIFFANY & CO.
HardWear watch
(in sterling silver and steel with diamonds)
HardWear pearl lock necklace
(in silver, 9–10 mm)

TIME AFTER TIME TIFFANY

Let's get one thing straight; diamonds are a girl's best friend. At Tiffany's The Landmark, however, they're so much more than just that. They're the past, present, and future. Where 83 years of haute horlogerie heritage muses with modernity, The Landmark gets updated with uber-sleek modern design and interactive displays. However, it is Tiffany's on Fifth Avenue, after all...so a dash of old-school glamor is to be expected. Note the Tiffany Diamond on display. With a whopping 128.54-carat serving of diamond,

this scandal of a stone speaks to all the gemmaphiles out there. We know: you're dying for a slice. While you can't exactly take a chunk out of this beauty, you can scope out Tiffany HardWear: a line of mesmerizing timepieces launched to celebrate the rebirth of The Landmark. Lustrous diamonds scintillate with sophistication, leading to a crystal dial shaped in the likeness of the renowned rock. Glimmering in their icy brilliance, one of these watches might just satisfy that diamantine desire. JOHN KOPP

40

Tomoyo Pattou

www.art-dept.com

Art Department



Tomoyo Pattou

www.art-dept.com

Art Department

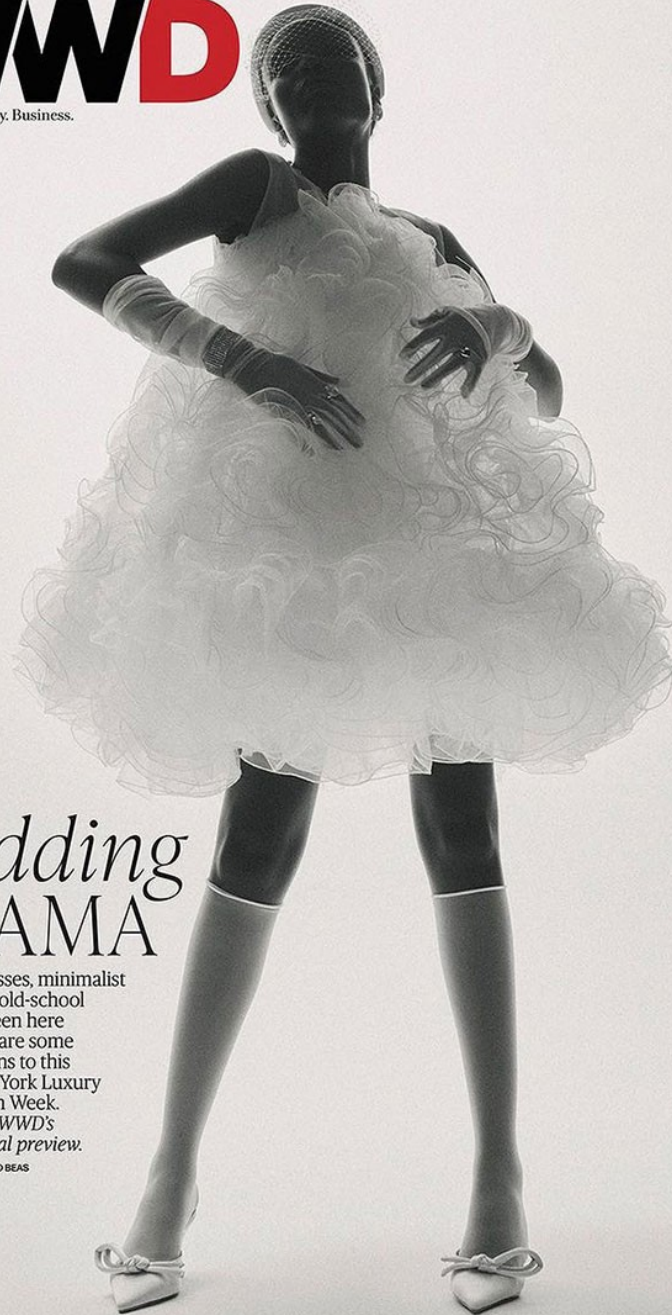
SPECIAL EDITION OCTOBER 10, 2023

WWD
Fashion. Beauty. Business.

Wedding DRAMA

Baby-doll dresses, minimalist columns and old-school glamour, as seen here from Nardos, are some of the additions to this season's New York Luxury Bridal Fashion Week. See inside for WWD's exclusive bridal preview.

PHOTOGRAPH BY RICARDO BEAS



Tomoyo Pattou

www.art-dept.com

Art Department



Tomoyo Pattou

www.art-dept.com

Art Department



Tomoyo Pattou

www.art-dept.com

Art Department



Tomoyo Pattou

www.art-dept.com

Art Department



Tomoyo Pattou

www.art-dept.com

Art Department



Tomoyo Pattou

www.art-dept.com

Art Department



Tomoyo Pattou

www.art-dept.com

Art Department



Tomoyo Pattou

www.art-dept.com

Art Department



Tomoyo Pattou

www.art-dept.com

Art Department



Tomoyo Pattou

www.art-dept.com

Art Department



Tomoyo Pattou

www.art-dept.com

Art Department



Tomoyo Pattou

www.art-dept.com

Art Department



Tomoyo Pattou

www.art-dept.com

Art Department



Tomoyo Pattou

www.art-dept.com

Art Department



Tomoyo Pattou

www.art-dept.com

Art Department



Tomoyo Pattou

www.art-dept.com

Art Department



Tomoyo Pattou

www.art-dept.com

Art Department



Tomoyo Pattou

www.art-dept.com

Art Department



Tomoyo Pattou

www.art-dept.com

Art Department



Tomoyo Pattou

www.art-dept.com

Art Department



Tomoyo Pattou

www.art-dept.com