

Art Department



Tiffany Leigh Patton

www.art-dept.com

Art Department



LIČENJE
Puder Radiant
Lyfting Syncro Skin,
odtenka 140 in 210,
Shiseido; rdečilo
za lica, uporabljeno
kot senčilo Rouge
Blush, odtenek
962, **Dior**; senčilo
Lumiere Luxe
Powder, odtenek Ice,
Ben Nye; maskara
Sky High Mascara,
odtenek Very Black,
Maybelline; rdečilo
za lica Rouge Blush,
odtenek 999, **Dior**;
šminka Lip, odtenka
Heroine in Syrup,
MAC.

OBLAČILA
Suknjič **Daniel**
Silverstein; uhani
Yochi New York.

*Lepota pod
ličili je še kako
pomembna,
a prav tako
ne smemo
spregledati moči
živahnih barv,
ki nam prav z
ličili v življenje
vnašajo radost in
veselje.*

MODERNA
PASTELNA
PRAVLJICA

FOTOGRAFIJA JULIA MORRIS, LIČENJE TIFFANY LEIGH PATTON

Tiffany Leigh Patton

www.art-dept.com

Art Department



PRIČESKA JENNIFER
COVINGTON-BOWERS
Z IZDELKI ORIBE
MANIKIRA KAYO
HIGUCHI Z IZDELKI
ZOYA @BRYAN BANTRY
AGENCY
MODEL JESSICA
WHITLOW @NEW YORK
MODEL MANAGEMENT
OBDELAVA
FOTOGRAFIJ
COLOR CONSULTING

LIČILA
Puder Radiant Lifting Syncro Skin,
odtenka 140 in 210, Shiseido;
Eyeshadow Palette Electropop,
Kevyn Aucoin; osvetljevalec v stiku
Baume Essentiel, odtenek Transpa-
rent, Chanel; osvetljevalec Shade and
Illuminate, odtenek 05, Tom Ford;
šminka Rouge Coco Flash, odtenek
54 Boy, Chanel.
OBLAČILA IN MODNI
DODATKI
Top in hlače April & Alex.

Tiffany Leigh Patton

www.art-dept.com

Art Department



*Ko
na VRATA
potrka
POMLAD
in nas
RAZVESELI
z najbolj
SLADKIMI
pasteli.
Prikimavamo
MODRI,
rožnati,
ORANŽNI,
zeleni in
VIJOLIČASTI
različici.*

LIČILA
Puder Radiant Lifting Syncro Skin,
odtenka 140 in 210, **Shiseido**; senčilo
5 Couleurs Eyeshadow Palette,
odtenek 897 Sprint, **Dior**; rdečilo
za lica Jouer Contraste, odtenek 64
Pink Explosion, **Chanel**; šminčka Soft
Matte Tinted Lip Balm, odtenek
Pink Nude, **Nars**.

**OBLAČILA IN MODNI
DODATKI**
Suknjic **Laudedekly**; ogrlica **Lele
Sadoughi**.

V BARVAH
pomladi

FOTOGRAFIJE IN STILIRANJE JULIA MORRIS @TRACEY MATTINGLY AGENCY,
LIČENJE TIFFANY LEIGH PATTON @ART DEPARTMENT

Tiffany Leigh Patton

www.art-dept.com

Art Department



LIČILA
Puder Radiant Lifting
Syncro Skin, odtenka 140 in
210, Shiseido; senčilo Trio
Chrome Eyeshadow Palette,
Natasha Denona; krema za
obraz 8 hr Cream, Eliza-
beth Arden; rdečilo za lica
Cloud Paint, odtenek Buff,
Glossier; osvetljevalec Shade
and Illuminate, odtenek 05,
Tom Ford; obarvan balzam
za ustnice Soft Matte Tinted
Lip Balm, odtenek Pink
Nude, Nars.
**OBLAČILA IN
MODNI DODATKI**
Jakna MJE Studios; uhani
Lele Sadoughi.

Tiffany Leigh Patton

www.art-dept.com

Art Department



LIČILA

Puder Radiant Lifting Syncro Skin Shade, odtenka 140 in 210, Shiseido; senčilo Eyeshadow Palette, odtenek Electropop, Kevyn Aucoin; rdečilo za lica Rouge Blush, odtenek 962, Dior; senčilo v prahu Lumiere Luxe Powder, odtenek Ice, Ben Nye; osvetjevalec v stiku Baume Essentiel, odtenek Transparent, Chanel; krema za obraz 8 hr Cream, Elizabeth Arden; maskara Sky High Mascara, odtenek Very Black, Maybelline; osvetjevalec za lica Shade and Illuminate, odtenek 05, Tom Ford; sminka Coco Rouge Flash, odtenek 54 Boy, Chanel.

Tiffany Leigh Patton

www.art-dept.com

Art Department



Tiffany Leigh Patton

www.art-dept.com

Art Department



Tiffany Leigh Patton

www.art-dept.com

Art Department



Tiffany Leigh Patton

www.art-dept.com

Art Department



Tiffany Leigh Patton

www.art-dept.com

Art Department



Tiffany Leigh Patton

www.art-dept.com

Art Department



Tiffany Leigh Patton

www.art-dept.com

Art Department



Tiffany Leigh Patton

www.art-dept.com

Art Department



Tiffany Leigh Patton

www.art-dept.com

Art Department



Tiffany Leigh Patton

www.art-dept.com

Art Department



Tiffany Leigh Patton

www.art-dept.com

Art Department



Tiffany Leigh Patton

www.art-dept.com

Art Department



Tiffany Leigh Patton

www.art-dept.com

Art Department



Tiffany Leigh Patton

www.art-dept.com

Art Department



Tiffany Leigh Patton

www.art-dept.com

Art Department



Tiffany Leigh Patton

www.art-dept.com

Art Department



Tiffany Leigh Patton

www.art-dept.com

Art Department



Tiffany Leigh Patton

www.art-dept.com

Art Department



Tiffany Leigh Patton

www.art-dept.com

Art Department



Tiffany Leigh Patton

www.art-dept.com

Art Department



Tiffany Leigh Patton

www.art-dept.com

Art Department



Tiffany Leigh Patton

www.art-dept.com

Art Department



Tiffany Leigh Patton

www.art-dept.com

Art Department



Tiffany Leigh Patton

www.art-dept.com

Art Department



Tiffany Leigh Patton

www.art-dept.com

Art Department



Tiffany Leigh Patton

www.art-dept.com

Art Department



Tiffany Leigh Patton

www.art-dept.com

Art Department



Tiffany Leigh Patton

www.art-dept.com

Art Department



Tiffany Leigh Patton

www.art-dept.com

Art Department



Tiffany Leigh Patton

www.art-dept.com

Art Department



Tiffany Leigh Patton

www.art-dept.com

Art Department



Tiffany Leigh Patton

www.art-dept.com

Art Department



Tiffany Leigh Patton

www.art-dept.com

Art Department



Tiffany Leigh Patton

www.art-dept.com

Art Department



Tiffany Leigh Patton

www.art-dept.com

Art Department



Tiffany Leigh Patton

www.art-dept.com

Art Department



Tiffany Leigh Patton

www.art-dept.com

Art Department



Tiffany Leigh Patton

www.art-dept.com

Art Department



Tiffany Leigh Patton

www.art-dept.com

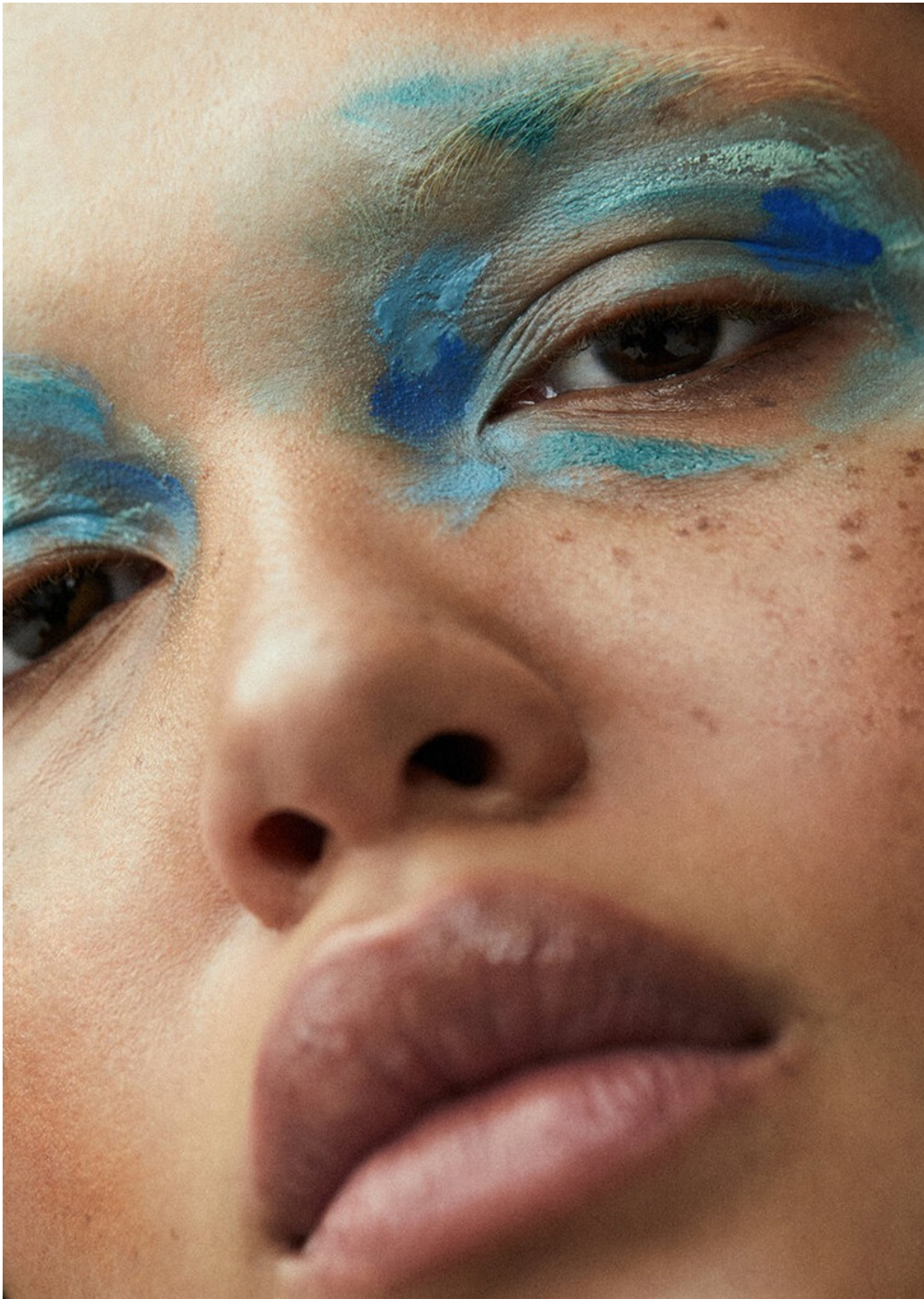
Art Department



Tiffany Leigh Patton

www.art-dept.com

Art Department



Tiffany Leigh Patton

www.art-dept.com

Art Department



Tiffany Leigh Patton

www.art-dept.com

Art Department



Tiffany Leigh Patton

www.art-dept.com

Art Department



Tiffany Leigh Patton

www.art-dept.com

Art Department



Tiffany Leigh Patton

www.art-dept.com

Art Department



Tiffany Leigh Patton

www.art-dept.com

Art Department



Tiffany Leigh Patton

www.art-dept.com

Art Department



Tiffany Leigh Patton

www.art-dept.com

Art Department



Tiffany Leigh Patton

www.art-dept.com

Art Department



Tiffany Leigh Patton

www.art-dept.com

Art Department



Tiffany Leigh Patton

www.art-dept.com

Art Department



Tiffany Leigh Patton

www.art-dept.com

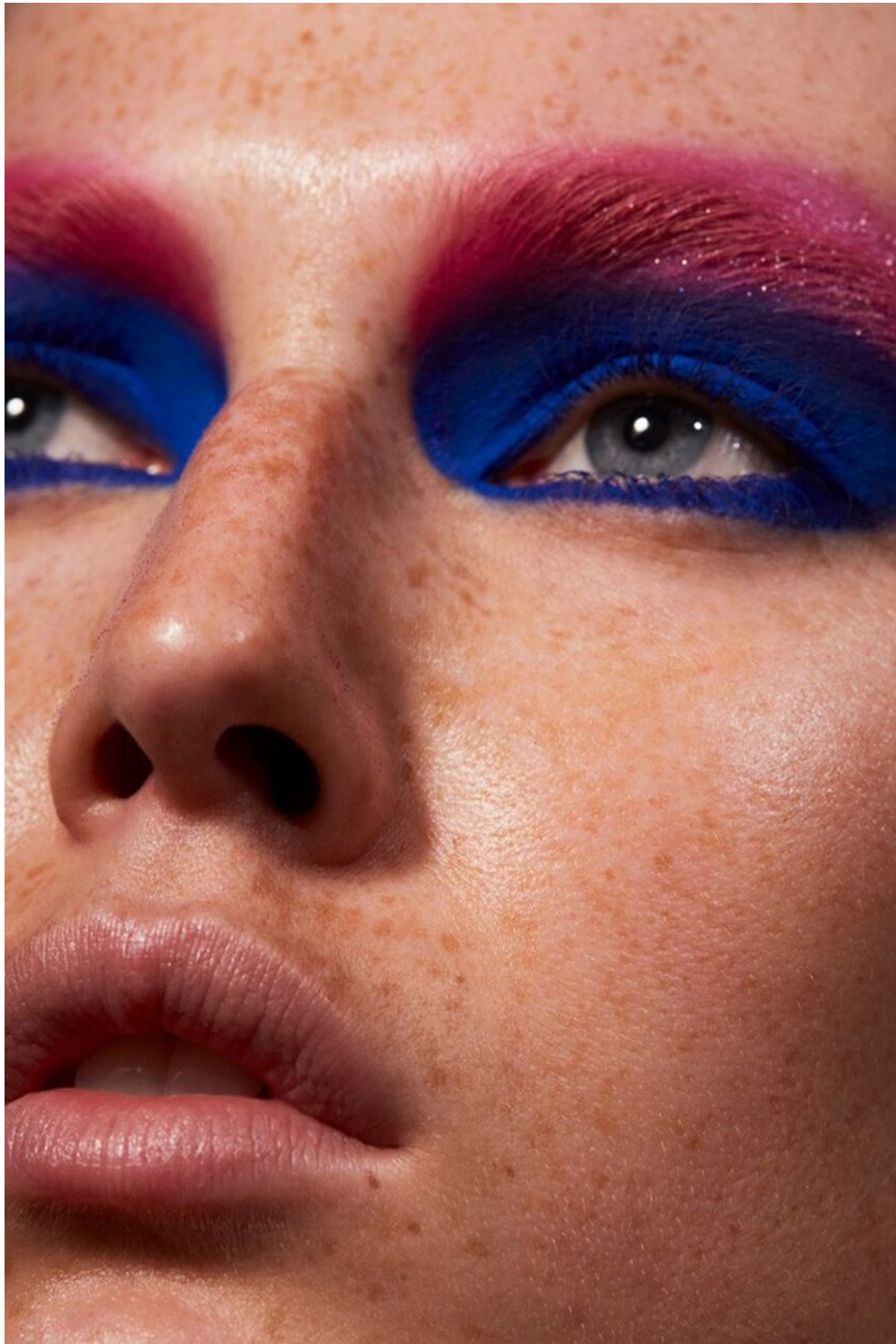
Art Department



Tiffany Leigh Patton

www.art-dept.com

Art Department



Tiffany Leigh Patton

www.art-dept.com

Art Department



Tiffany Leigh Patton

www.art-dept.com

Art Department



Tiffany Leigh Patton

www.art-dept.com

Art Department



Tiffany Leigh Patton

www.art-dept.com

Art Department



Tiffany Leigh Patton

www.art-dept.com

Art Department



Tiffany Leigh Patton

www.art-dept.com

Art Department



Tiffany Leigh Patton

www.art-dept.com

Art Department



Tiffany Leigh Patton

www.art-dept.com

Art Department



Tiffany Leigh Patton

www.art-dept.com

Art Department



Tiffany Leigh Patton

www.art-dept.com

Art Department



Tiffany Leigh Patton

www.art-dept.com

Art Department



Tiffany Leigh Patton

www.art-dept.com

Art Department



Tiffany Leigh Patton

www.art-dept.com

Art Department



Tiffany Leigh Patton

www.art-dept.com

Art Department



Tiffany Leigh Patton

www.art-dept.com

Art Department



Tiffany Leigh Patton

www.art-dept.com

Art Department



Tiffany Leigh Patton

www.art-dept.com

Art Department



Tiffany Leigh Patton

www.art-dept.com

Art Department



Tiffany Leigh Patton

www.art-dept.com

Art Department



Tiffany Leigh Patton

www.art-dept.com

Art Department



Tiffany Leigh Patton

www.art-dept.com

Art Department



Tiffany Leigh Patton

www.art-dept.com

Art Department



Tiffany Leigh Patton

www.art-dept.com

Art Department



Tiffany Leigh Patton

www.art-dept.com

Art Department



Tiffany Leigh Patton

www.art-dept.com

Art Department



Tiffany Leigh Patton

www.art-dept.com

Art Department



Tiffany Leigh Patton

www.art-dept.com

Art Department



Tiffany Leigh Patton

www.art-dept.com

Art Department



Tiffany Leigh Patton

www.art-dept.com

Art Department



Tiffany Leigh Patton

www.art-dept.com

Art Department



Tiffany Leigh Patton

www.art-dept.com

Art Department



Tiffany Leigh Patton

www.art-dept.com

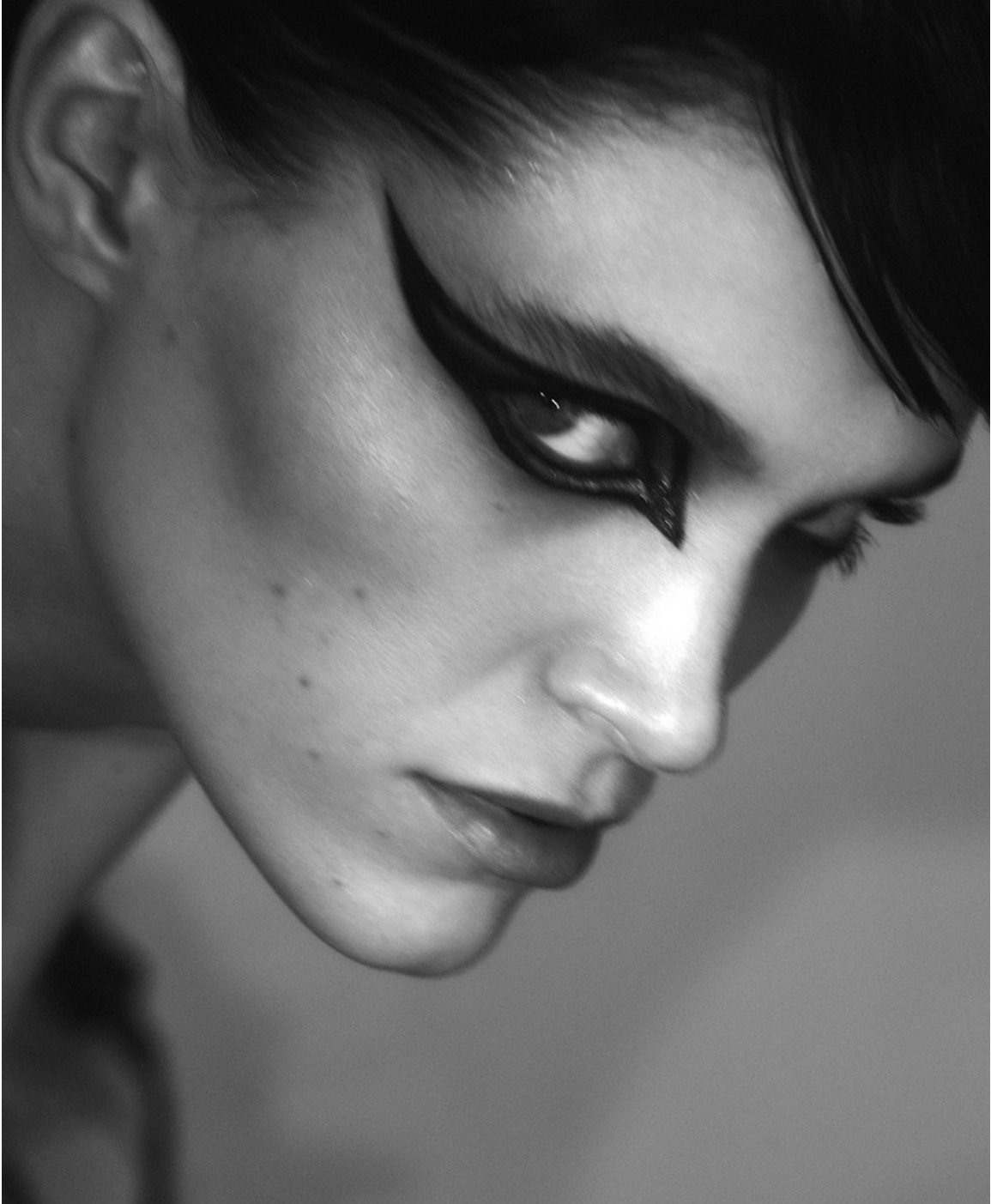
Art Department



Tiffany Leigh Patton

www.art-dept.com

Art Department



Tiffany Leigh Patton

www.art-dept.com

Art Department



Tiffany Leigh Patton

www.art-dept.com

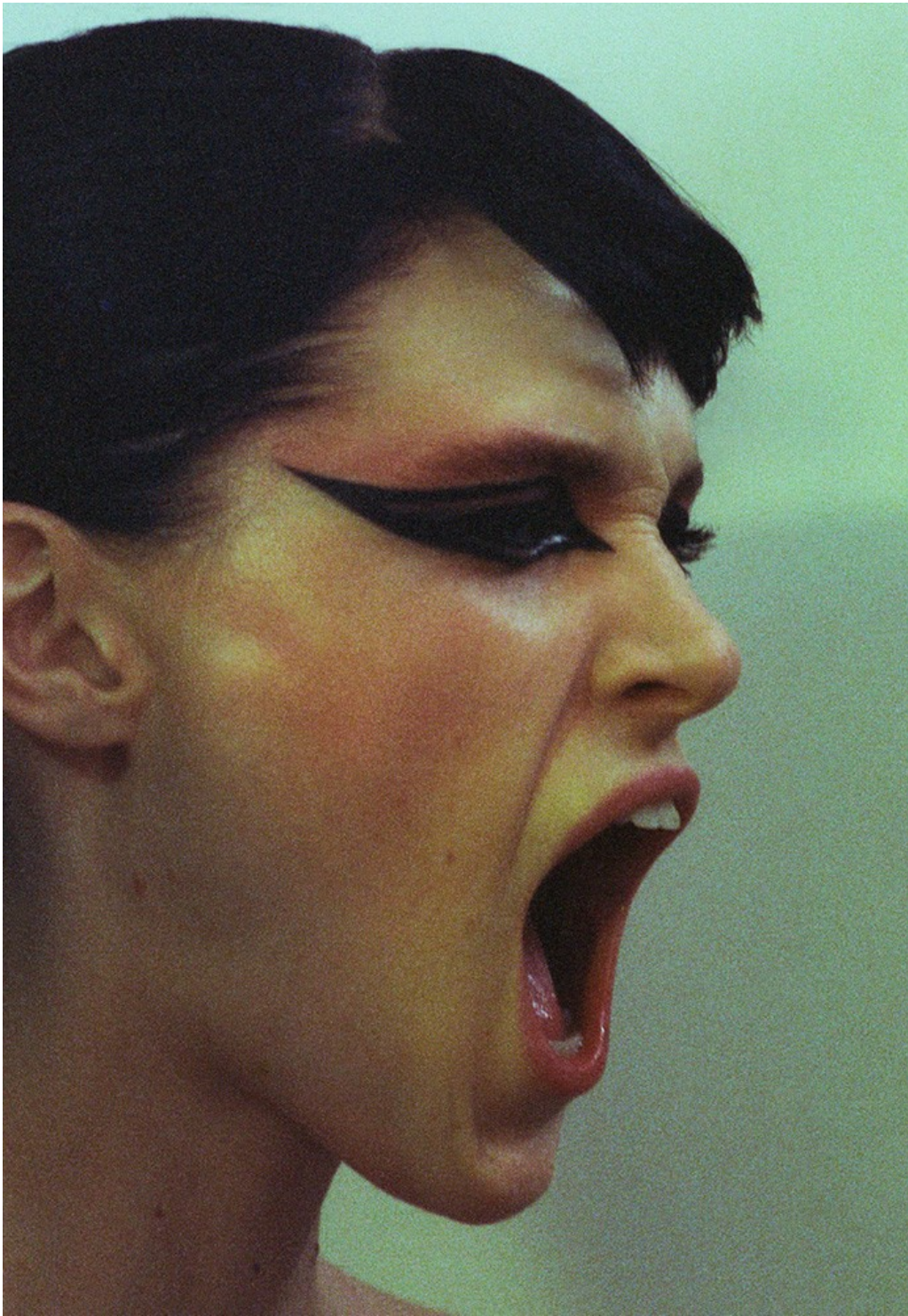
Art Department



Tiffany Leigh Patton

www.art-dept.com

Art Department



Tiffany Leigh Patton

www.art-dept.com

Art Department



Tiffany Leigh Patton

www.art-dept.com

Art Department



Tiffany Leigh Patton

www.art-dept.com

Art Department

ELLE
lepota



Svinčnik za oči v rumeni barvi Aqua Color UV-Dayglow, Kryolan; tekoče črtalo v barvi Keep it Curreant, Liquid Last, MAC; svinčnik za oči v barvi Fine Wine, Marc Jacobs; puder Face and Body Foundation, MAC; korektor v barvi Vanilla, Radiant Creamy Concealer, NARS; svinčnik za obrvi v barvi 06 Blond Tendre, Stylo Sourcil Waterproof, Chanel; šminčka v barvi Orchid Soleil, Tom Ford.

Obleka Daniel Silverstein; ušani Solomeina.

POTEGNITE ČRTO

*Čisto za se podariti. Ali, da nam priložnost
druka je razpravi o lepoti, zato smo oblikovali
LEPOTNE IDEJE. Na fotografiji in Tvegi
na do danes najpomembnejši, najbolj znani, ki nam
dajo, kako se oblikovati, kako se oblikovati, kako se oblikovati
druka je razpravi o lepoti, zato smo oblikovali
LEPOTNE IDEJE. Na fotografiji in Tvegi
na do danes najpomembnejši, najbolj znani, ki nam
dajo, kako se oblikovati, kako se oblikovati, kako se oblikovati*

PODČRTANO: najbolj znani, ki nam dajo, kako se oblikovati, kako se oblikovati, kako se oblikovati

FOTOGRAFIA: BRUCE THOMPSON

71

Tiffany Leigh Patton

www.art-dept.com

Art Department



ELEKTRIČNI NEON
Korektor v barvi SC
2, Secret Camouflage,
Laura Mercier; barva
za obraz v barvi Neon
Green N60, Diamond
Fx; črta za oči v barvi
851 Matte Pink, Liquid
Eyeliner, Dior Back-
stage; tekoče črta
za oči v barvi Keep it
Current, Liquid Last
Liner, MAC; šminka
v barvi Orchid Soleil,
Tom Ford.

Tiffany Leigh Patton

www.art-dept.com

Art Department



VIJOLA VIJOLICA
Kot svinčnik za oči smo uporabili šminko v barvi Roxy, Everlasting Liquid Lipstick, Kad Von D. Svinčnik za oči v barvi Fine Wine, Highliner Matte Gel Eye Crayon, Marc Jacobs; šminka v barvi Heaping Hazelnut, Chubby Stick Moisturizing Lip Colour Balm, Clinique. Jakna Elias Gurrola; pestan Dominique Renee.

Tiffany Leigh Patton

www.art-dept.com

Art Department



Tiffany Leigh Patton

www.art-dept.com

Art Department



Tiffany Leigh Patton

www.art-dept.com

Art Department



Tiffany Leigh Patton

www.art-dept.com

Art Department



Tiffany Leigh Patton

www.art-dept.com

Art Department



Tiffany Leigh Patton

www.art-dept.com

Art Department



Tiffany Leigh Patton

www.art-dept.com

Art Department



Tiffany Leigh Patton

www.art-dept.com

Art Department



Áo khoác
DOLCE &
GABBANA
Họa tại
JENNIFER
FISHER

**ĐỊNH NGHĨA?
VẼ ĐẸP MỚI**

Giấy phút H'Hen Niê đăng quang Hoa hậu Hoàn Vũ Việt Nam 2017 đã đặt ra một định nghĩa mới cho vẻ đẹp của người phụ nữ Việt: da ngăm, mắt góc cạnh và TÓC NGẮN PIXIE. Bộ hình này dành tặng một thế hệ những cô gái trẻ của NGÀY MỚI: dám sống theo cách riêng.

Bài KHANH NGOC - Ảnh CALEB & GLADYS - STYLIST DAVIAN LAIN - Người mẫu BIRI SHARIPOVA @ MUSE NYC - Làm tóc NIKO WEDDLE sử dụng KENRA PROFESSIONAL - Trang điểm TIFFANY PATTON @ BA REPS sử dụng GIORGIO ARMANI BEAUTY - Làm móng TORI H. @ RAW BROWN PRO sử dụng ESSIE

130 WWW.ELLE.VN

Tiffany Leigh Patton

www.art-dept.com

Art Department

Bí quyết để tóc ngắn
không bị xẹp đó là hạn
chế sử dụng dầu xả.
Ngoài ra một số người
tuân theo bí quyết:
Dùng dầu xả trước khi
dùng dầu gội, đảo ngược
lại trình tự để tóc không
nặng dưỡng chất.

Điểm
ALEXANDER WANG
Trang sức
JENNIFER FISHER



Tiffany Leigh Patton

www.art-dept.com

Art Department



Tiffany Leigh Patton

www.art-dept.com

Art Department



Tiffany Leigh Patton

www.art-dept.com

Art Department



Tiffany Leigh Patton

www.art-dept.com

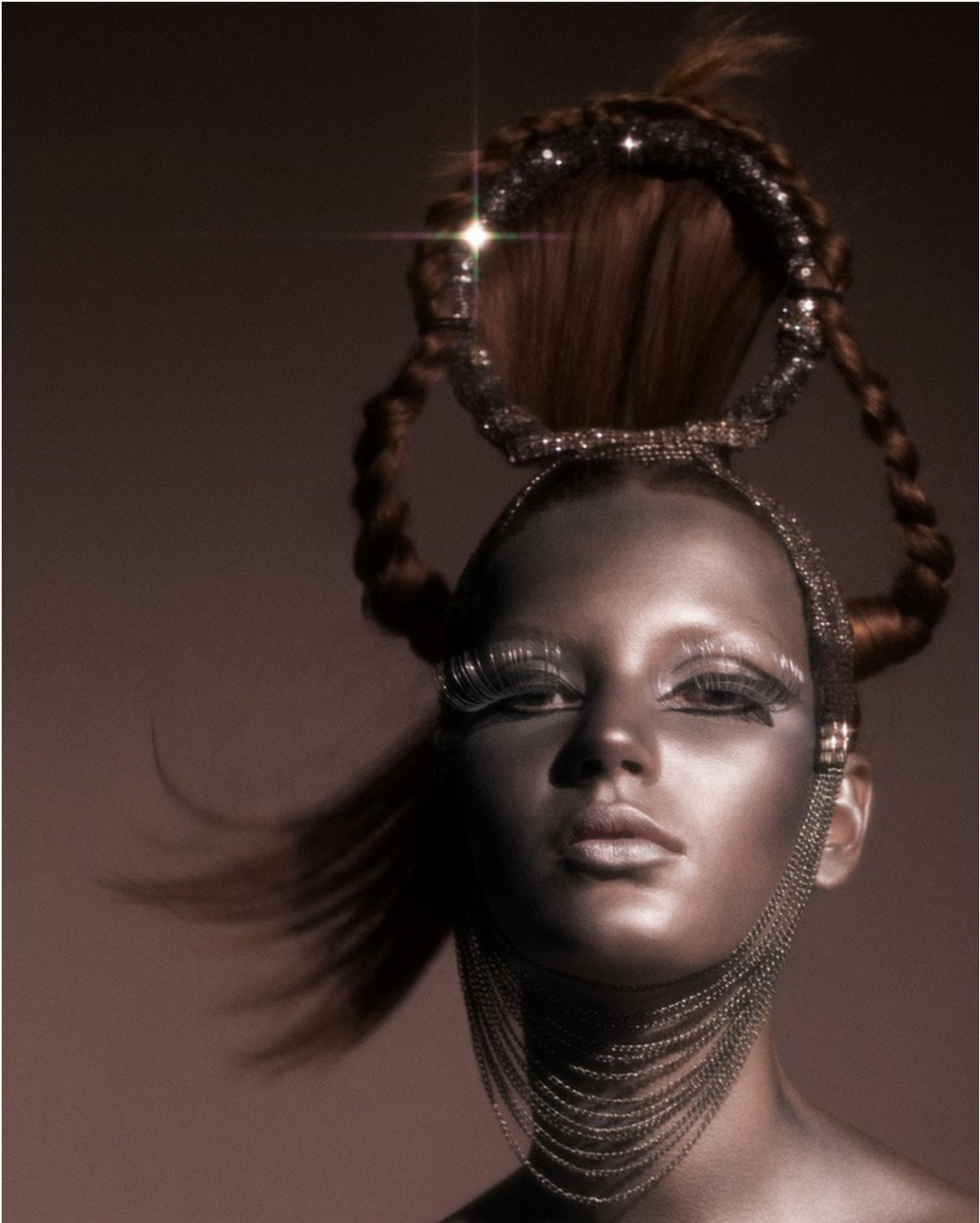
Art Department



Tiffany Leigh Patton

www.art-dept.com

Art Department



Tiffany Leigh Patton

www.art-dept.com

Art Department



Tiffany Leigh Patton

www.art-dept.com

Art Department



Tiffany Leigh Patton

www.art-dept.com

Art Department



Tiffany Leigh Patton

www.art-dept.com

Art Department



Tiffany Leigh Patton

www.art-dept.com

Art Department



Tiffany Leigh Patton

www.art-dept.com

Art Department



Tiffany Leigh Patton

www.art-dept.com

Art Department



Tiffany Leigh Patton

www.art-dept.com

Art Department



Tiffany Leigh Patton

www.art-dept.com

Art Department



Tiffany Leigh Patton

www.art-dept.com

Art Department



Tiffany Leigh Patton

www.art-dept.com

Art Department



Tiffany Leigh Patton

www.art-dept.com

Art Department



Tiffany Leigh Patton

www.art-dept.com

Art Department



Tiffany Leigh Patton

www.art-dept.com

Art Department



Tiffany Leigh Patton

www.art-dept.com

Art Department



Tiffany Leigh Patton

www.art-dept.com

Art Department



Tiffany Leigh Patton

www.art-dept.com

Art Department



Tiffany Leigh Patton

www.art-dept.com

Art Department



Tiffany Leigh Patton

www.art-dept.com

Art Department



Tiffany Leigh Patton

www.art-dept.com

Art Department



Tiffany Leigh Patton

www.art-dept.com

Art Department



Tiffany Leigh Patton

www.art-dept.com

Art Department



Tiffany Leigh Patton

www.art-dept.com

Art Department



Tiffany Leigh Patton

www.art-dept.com

Art Department



Tiffany Leigh Patton

www.art-dept.com

Art Department



Tiffany Leigh Patton

www.art-dept.com

Art Department



Tiffany Leigh Patton

www.art-dept.com

Art Department



Tiffany Leigh Patton

www.art-dept.com

Art Department



Tiffany Leigh Patton

www.art-dept.com

Art Department



Tiffany Leigh Patton

www.art-dept.com

Art Department



Tiffany Leigh Patton

www.art-dept.com

Art Department



Tiffany Leigh Patton

www.art-dept.com

Art Department



Tiffany Leigh Patton

www.art-dept.com

Art Department



Tiffany Leigh Patton

www.art-dept.com

Art Department



Tiffany Leigh Patton

www.art-dept.com

Art Department



Tiffany Leigh Patton

www.art-dept.com

Art Department



Tiffany Leigh Patton

www.art-dept.com

Art Department



Tiffany Leigh Patton

www.art-dept.com

Art Department



Tiffany Leigh Patton

www.art-dept.com

Art Department



Tiffany Leigh Patton

www.art-dept.com

Art Department



Tiffany Leigh Patton

www.art-dept.com

Art Department



Tiffany Leigh Patton

www.art-dept.com

Art Department



Tiffany Leigh Patton

www.art-dept.com

Art Department



Tiffany Leigh Patton

www.art-dept.com

Art Department



Tiffany Leigh Patton

www.art-dept.com

Art Department



Tiffany Leigh Patton

www.art-dept.com

Art Department



Tiffany Leigh Patton

www.art-dept.com

Art Department



Tiffany Leigh Patton

www.art-dept.com

Art Department



Tiffany Leigh Patton

www.art-dept.com

Art Department



Tiffany Leigh Patton

www.art-dept.com

Art Department

TENDENCIAS

HAZ LA DIFERENCIA

Con la ayuda de un pincel y un delineador en crema (Creme Liner en Black de M.A.C. Cosmetics) dibuja un trazo grueso arriba de tus párpados en dirección horizontal. Para equilibrarlo, utiliza un lipstick con matices rosados (New Nudes Sheer Gel Lipstick en Moody Margot de Marc Jacobs Beauty) y finaliza contorneando tus mejillas para definir las (Shade and Illuminate en Intensity One de Tom Ford).

CAMISA, *Saint Laurent.*

The finish line

¿Sueles delinear tus ojos siempre igual? Estos estilos te ayudarán a lograr un look súper chic y atrevido. Abre tu imaginación y no temas innovar.

FOTOGRAFÍAS / RODRIGO CID

Tiffany Leigh Patton

www.art-dept.com

Art Department



Tiffany Leigh Patton

www.art-dept.com

Art Department



Tiffany Leigh Patton

www.art-dept.com

Art Department



Tiffany Leigh Patton

www.art-dept.com

Art Department



Tiffany Leigh Patton

www.art-dept.com

Art Department



Tiffany Leigh Patton

www.art-dept.com

Art Department



Tiffany Leigh Patton

www.art-dept.com

Art Department



Tiffany Leigh Patton

www.art-dept.com

Art Department



Tiffany Leigh Patton

www.art-dept.com

Art Department



Tiffany Leigh Patton

www.art-dept.com

Art Department



Tiffany Leigh Patton

www.art-dept.com

Art Department



Tiffany Leigh Patton

www.art-dept.com

Art Department



Tiffany Leigh Patton

www.art-dept.com

Art Department



Tiffany Leigh Patton

www.art-dept.com

Art Department



Tiffany Leigh Patton

www.art-dept.com

Art Department



Tiffany Leigh Patton

www.art-dept.com

Art Department



Tiffany Leigh Patton

www.art-dept.com

Art Department



Tiffany Leigh Patton

www.art-dept.com

Art Department



Tiffany Leigh Patton

www.art-dept.com

Art Department



Tiffany Leigh Patton

www.art-dept.com

Art Department



Tiffany Leigh Patton

www.art-dept.com

Art Department



Tiffany Leigh Patton

www.art-dept.com

Art Department



Tiffany Leigh Patton

www.art-dept.com

Art Department



Tiffany Leigh Patton

www.art-dept.com

Art Department



Tiffany Leigh Patton

www.art-dept.com

Art Department



Tiffany Leigh Patton

www.art-dept.com

Art Department



Tiffany Leigh Patton

www.art-dept.com

Art Department



Tiffany Leigh Patton

www.art-dept.com

Art Department



Tiffany Leigh Patton

www.art-dept.com

Art Department



Tiffany Leigh Patton

www.art-dept.com

Art Department



Tiffany Leigh Patton

www.art-dept.com

Art Department



Tiffany Leigh Patton

www.art-dept.com

Art Department



Tiffany Leigh Patton

www.art-dept.com

Art Department



Tiffany Leigh Patton

www.art-dept.com

Art Department



Tiffany Leigh Patton

www.art-dept.com

Art Department



Tiffany Leigh Patton

www.art-dept.com

Art Department



Tiffany Leigh Patton

www.art-dept.com

Art Department



Tiffany Leigh Patton

www.art-dept.com

Art Department



Tiffany Leigh Patton

www.art-dept.com

Art Department



Tiffany Leigh Patton

www.art-dept.com

Art Department



Tiffany Leigh Patton

www.art-dept.com

Art Department



Tiffany Leigh Patton

www.art-dept.com

Art Department



Tiffany Leigh Patton

www.art-dept.com

Art Department



Tiffany Leigh Patton

www.art-dept.com

Art Department



Tiffany Leigh Patton

www.art-dept.com

Art Department



Tiffany Leigh Patton

www.art-dept.com

Art Department



Tiffany Leigh Patton

www.art-dept.com

Art Department



Tiffany Leigh Patton

www.art-dept.com

Art Department



Tiffany Leigh Patton

www.art-dept.com

Art Department



Tiffany Leigh Patton

www.art-dept.com

Art Department



Tiffany Leigh Patton

www.art-dept.com

Art Department



Tiffany Leigh Patton

www.art-dept.com

Art Department



Tiffany Leigh Patton

www.art-dept.com

Art Department



Tiffany Leigh Patton

www.art-dept.com

Art Department



Tiffany Leigh Patton

www.art-dept.com

Art Department



Tiffany Leigh Patton

www.art-dept.com

Art Department



Tiffany Leigh Patton

www.art-dept.com

Art Department



Tiffany Leigh Patton

www.art-dept.com

Art Department



Tiffany Leigh Patton

www.art-dept.com

Art Department



Tiffany Leigh Patton

www.art-dept.com

Art Department



Tiffany Leigh Patton

www.art-dept.com

Art Department



Tiffany Leigh Patton

www.art-dept.com

Art Department



Tiffany Leigh Patton

www.art-dept.com

Art Department



Tiffany Leigh Patton

www.art-dept.com

Art Department



Tiffany Leigh Patton

www.art-dept.com

Art Department



Tiffany Leigh Patton

www.art-dept.com

Art Department



Tiffany Leigh Patton

www.art-dept.com

Art Department



Tiffany Leigh Patton

www.art-dept.com

Art Department



Tiffany Leigh Patton

www.art-dept.com

Art Department



Tiffany Leigh Patton

www.art-dept.com

Art Department



Tiffany Leigh Patton

www.art-dept.com

Art Department



Tiffany Leigh Patton

www.art-dept.com

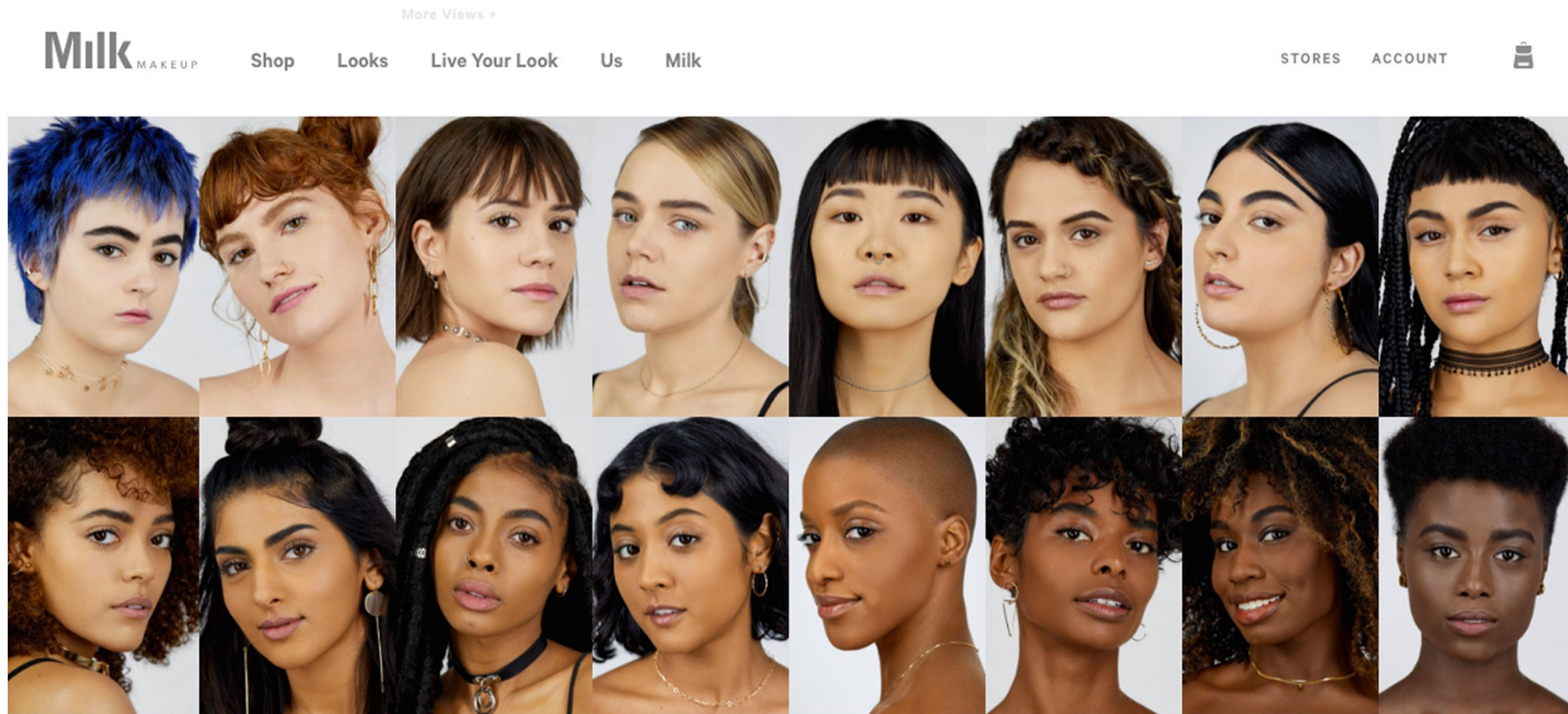
Art Department



Tiffany Leigh Patton

www.art-dept.com

Art Department



Tiffany Leigh Patton

www.art-dept.com

Art Department



Tiffany Leigh Patton

www.art-dept.com

Art Department



Tiffany Leigh Patton

www.art-dept.com

Art Department



Tiffany Leigh Patton

www.art-dept.com

Art Department



Tiffany Leigh Patton

www.art-dept.com

Art Department



Tiffany Leigh Patton

www.art-dept.com

Art Department



Tiffany Leigh Patton

www.art-dept.com

Art Department



Tiffany Leigh Patton

www.art-dept.com

Art Department



Tiffany Leigh Patton

www.art-dept.com

Art Department



Tiffany Leigh Patton

www.art-dept.com

Art Department



Tiffany Leigh Patton

www.art-dept.com

Art Department



Tiffany Leigh Patton

www.art-dept.com

Art Department



Tiffany Leigh Patton

www.art-dept.com

Art Department



Tiffany Leigh Patton

www.art-dept.com