

# Art Department



Misuzu Miyake

[www.art-dept.com](http://www.art-dept.com)



# Art Department



Misuzu Miyake

[www.art-dept.com](http://www.art-dept.com)



# Art Department



Misuzu Miyake

[www.art-dept.com](http://www.art-dept.com)



# Art Department



Misuzu Miyake

[www.art-dept.com](http://www.art-dept.com)



# Art Department



Misuzu Miyake

[www.art-dept.com](http://www.art-dept.com)



# Art Department



Misuzu Miyake

[www.art-dept.com](http://www.art-dept.com)



# Art Department



Misuzu Miyake

[www.art-dept.com](http://www.art-dept.com)



# Art Department



Misuzu Miyake

[www.art-dept.com](http://www.art-dept.com)



# Art Department



Misuzu Miyake

[www.art-dept.com](http://www.art-dept.com)



# Art Department



Misuzu Miyake

[www.art-dept.com](http://www.art-dept.com)

# Art Department



Misuzu Miyake

[www.art-dept.com](http://www.art-dept.com)



# Art Department



Misuzu Miyake

[www.art-dept.com](http://www.art-dept.com)

# Art Department



Misuzu Miyake

[www.art-dept.com](http://www.art-dept.com)



# Art Department



Misuzu Miyake

[www.art-dept.com](http://www.art-dept.com)



# Art Department



Misuzu Miyake

[www.art-dept.com](http://www.art-dept.com)



# Art Department



Misuzu Miyake

[www.art-dept.com](http://www.art-dept.com)

# Art Department



Misuzu Miyake

[www.art-dept.com](http://www.art-dept.com)



# Art Department



Misuzu Miyake

[www.art-dept.com](http://www.art-dept.com)

# Art Department



Misuzu Miyake

[www.art-dept.com](http://www.art-dept.com)



# Art Department



Misuzu Miyake

[www.art-dept.com](http://www.art-dept.com)



# Art Department

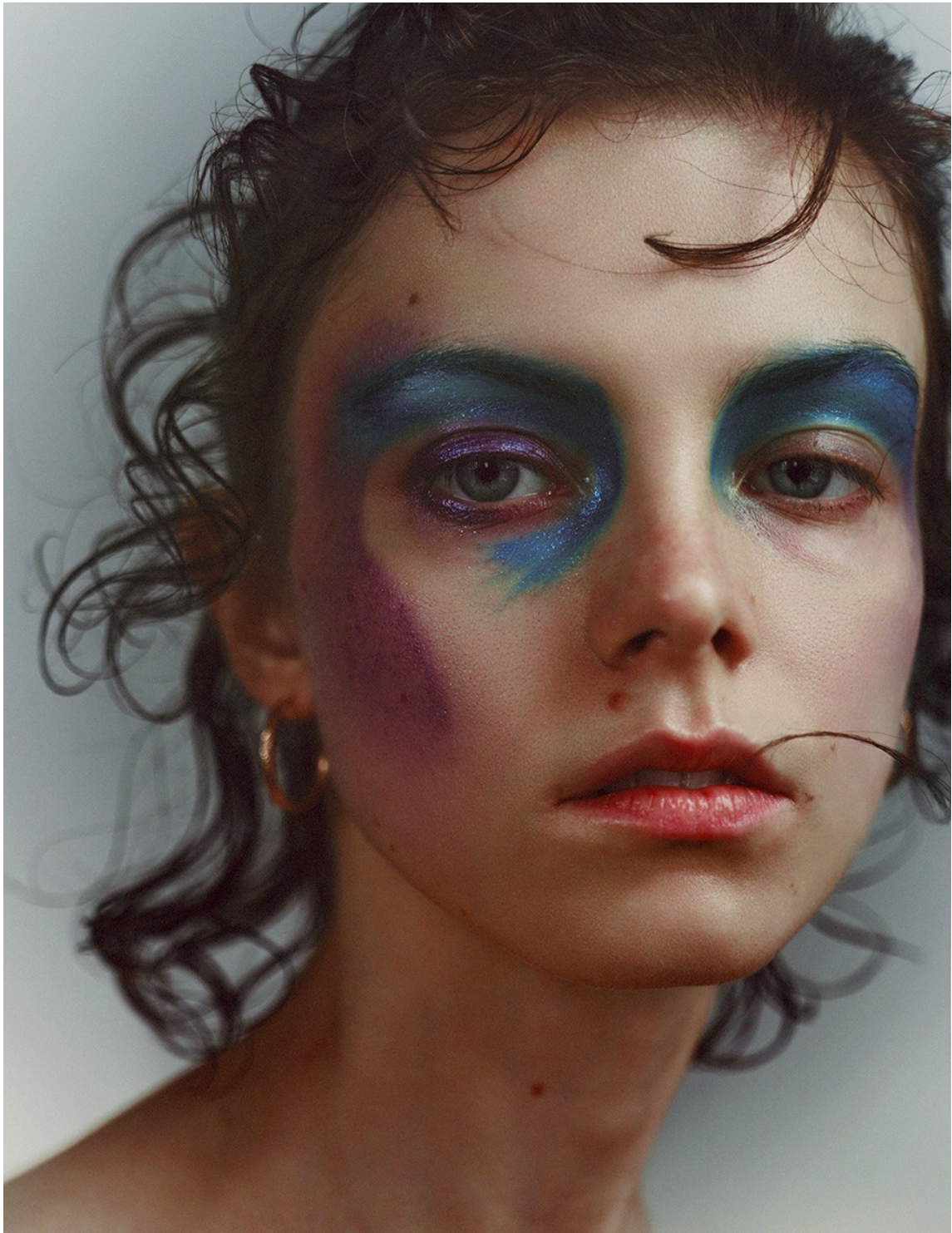


Misuzu Miyake

[www.art-dept.com](http://www.art-dept.com)



# Art Department



Misuzu Miyake

[www.art-dept.com](http://www.art-dept.com)



# Art Department



Misuzu Miyake

[www.art-dept.com](http://www.art-dept.com)



# Art Department



Misuzu Miyake

[www.art-dept.com](http://www.art-dept.com)

# Art Department



Misuzu Miyake

[www.art-dept.com](http://www.art-dept.com)



# Art Department



Misuzu Miyake

[www.art-dept.com](http://www.art-dept.com)

# Art Department



Misuzu Miyake

[www.art-dept.com](http://www.art-dept.com)



# Art Department



Misuzu Miyake

[www.art-dept.com](http://www.art-dept.com)

# Art Department



Misuzu Miyake

[www.art-dept.com](http://www.art-dept.com)



# Art Department



Misuzu Miyake

[www.art-dept.com](http://www.art-dept.com)

# Art Department



Misuzu Miyake

[www.art-dept.com](http://www.art-dept.com)



# Art Department



Misuzu Miyake

[www.art-dept.com](http://www.art-dept.com)

# Art Department



Misuzu Miyake

[www.art-dept.com](http://www.art-dept.com)



# Art Department



Misuzu Miyake

[www.art-dept.com](http://www.art-dept.com)



# Art Department



Misuzu Miyake

[www.art-dept.com](http://www.art-dept.com)



# Art Department



Misuzu Miyake

[www.art-dept.com](http://www.art-dept.com)



# Art Department



Misuzu Miyake

[www.art-dept.com](http://www.art-dept.com)



# Art Department



Misuzu Miyake

[www.art-dept.com](http://www.art-dept.com)



# Art Department



Misuzu Miyake

[www.art-dept.com](http://www.art-dept.com)



# Art Department



Misuzu Miyake

[www.art-dept.com](http://www.art-dept.com)



# Art Department



Misuzu Miyake

[www.art-dept.com](http://www.art-dept.com)



# Art Department



Misuzu Miyake

[www.art-dept.com](http://www.art-dept.com)



# Art Department



Misuzu Miyake

[www.art-dept.com](http://www.art-dept.com)



# Art Department



Misuzu Miyake

[www.art-dept.com](http://www.art-dept.com)

# Art Department



Misuzu Miyake

[www.art-dept.com](http://www.art-dept.com)



# Art Department



Misuzu Miyake

[www.art-dept.com](http://www.art-dept.com)

# Art Department



Misuzu Miyake

[www.art-dept.com](http://www.art-dept.com)



# Art Department



Misuzu Miyake

[www.art-dept.com](http://www.art-dept.com)



# Art Department

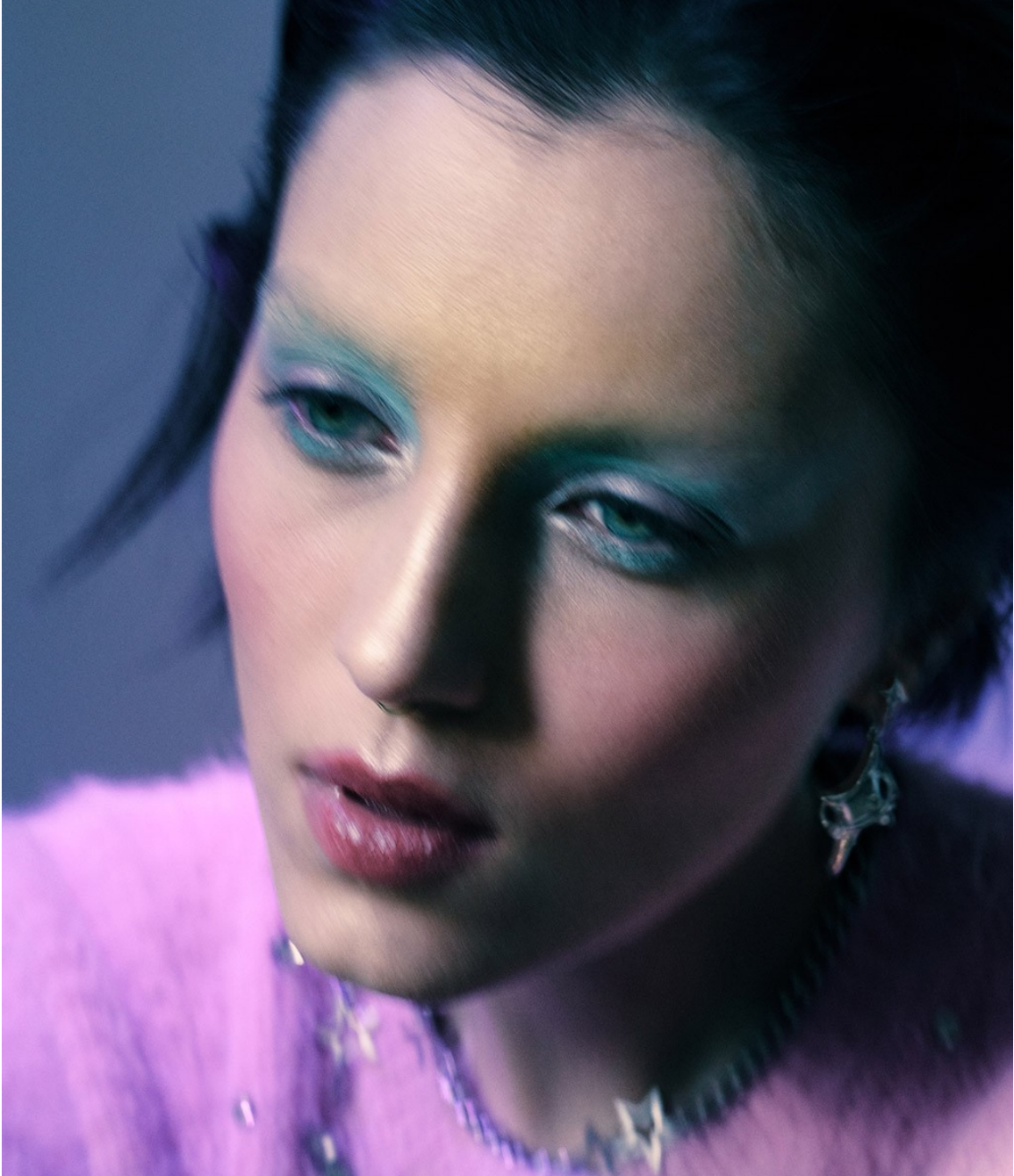


Misuzu Miyake

[www.art-dept.com](http://www.art-dept.com)



# Art Department



Misuzu Miyake

[www.art-dept.com](http://www.art-dept.com)

# Art Department



Misuzu Miyake

[www.art-dept.com](http://www.art-dept.com)



# Art Department



Misuzu Miyake

[www.art-dept.com](http://www.art-dept.com)

# Art Department



Misuzu Miyake

[www.art-dept.com](http://www.art-dept.com)



# Art Department



Misuzu Miyake

[www.art-dept.com](http://www.art-dept.com)

# Art Department



Misuzu Miyake

[www.art-dept.com](http://www.art-dept.com)



# Art Department



Misuzu Miyake

[www.art-dept.com](http://www.art-dept.com)



# Art Department



Misuzu Miyake

[www.art-dept.com](http://www.art-dept.com)



# Art Department

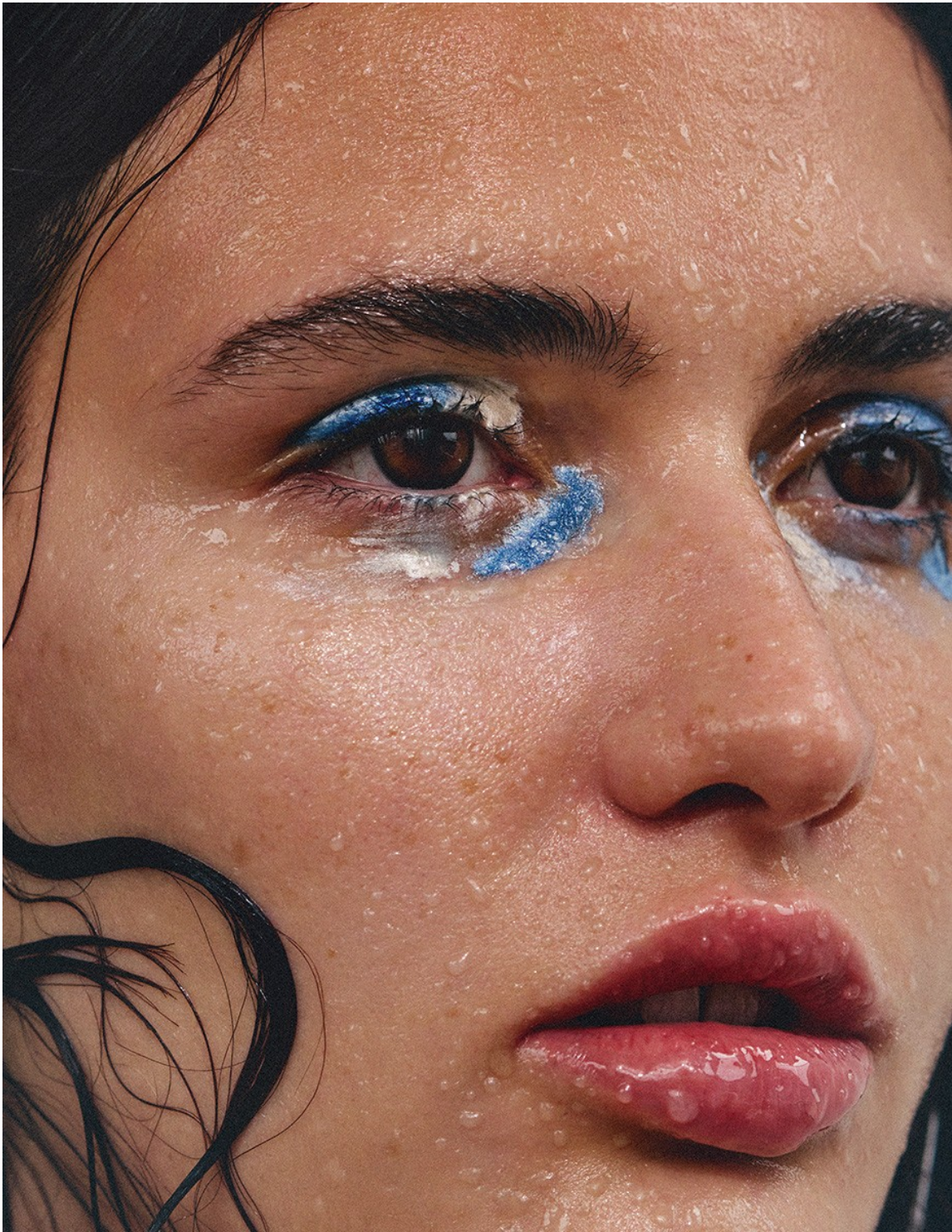


Misuzu Miyake

[www.art-dept.com](http://www.art-dept.com)



# Art Department



Misuzu Miyake

[www.art-dept.com](http://www.art-dept.com)



# Art Department



Misuzu Miyake

[www.art-dept.com](http://www.art-dept.com)

# Art Department



Misuzu Miyake

[www.art-dept.com](http://www.art-dept.com)



# Art Department



Misuzu Miyake

[www.art-dept.com](http://www.art-dept.com)

# Art Department

## *Frost yourself*

Denne måneden er all about parties, og vi er ikke vonde å be. I serien FROSTING ON THE CAKE får vi masse inspirasjon til festantrekk og glitrende tilbehør, kombinert med flere nyanser av nude sminke og en sterkt definert cat eye – en stor trend denne sesongen.

La deg også inspirere av motehusene Dior og Louis Vuitton sine makeup- og hår-looks, og notér deg våre sju life-savers på side 116 før alt braker løs.

ELLE *Skjønnhet*

## Misuzu Miyake

[www.art-dept.com](http://www.art-dept.com)



# Art Department



Misuzu Miyake

[www.art-dept.com](http://www.art-dept.com)

# Art Department



Misuzu Miyake

[www.art-dept.com](http://www.art-dept.com)



# Art Department



Misuzu Miyake

[www.art-dept.com](http://www.art-dept.com)

# Art Department



Misuzu Miyake

[www.art-dept.com](http://www.art-dept.com)



# Art Department



Misuzu Miyake

[www.art-dept.com](http://www.art-dept.com)

# Art Department



Misuzu Miyake

[www.art-dept.com](http://www.art-dept.com)



# Art Department



Misuzu Miyake

[www.art-dept.com](http://www.art-dept.com)

# Art Department



Misuzu Miyake

[www.art-dept.com](http://www.art-dept.com)



# Art Department



Misuzu Miyake

[www.art-dept.com](http://www.art-dept.com)

# Art Department



Misuzu Miyake

[www.art-dept.com](http://www.art-dept.com)



# Art Department



Misuzu Miyake

[www.art-dept.com](http://www.art-dept.com)



# Art Department



Misuzu Miyake

[www.art-dept.com](http://www.art-dept.com)



# Art Department



Misuzu Miyake

[www.art-dept.com](http://www.art-dept.com)



# Art Department



Misuzu Miyake

[www.art-dept.com](http://www.art-dept.com)



# Art Department



Misuzu Miyake

[www.art-dept.com](http://www.art-dept.com)



# Art Department



Misuzu Miyake

[www.art-dept.com](http://www.art-dept.com)



# Art Department



Misuzu Miyake

[www.art-dept.com](http://www.art-dept.com)

# Art Department



Misuzu Miyake

[www.art-dept.com](http://www.art-dept.com)



# Art Department



Misuzu Miyake

[www.art-dept.com](http://www.art-dept.com)



# Art Department



Misuzu Miyake

[www.art-dept.com](http://www.art-dept.com)



# Art Department



Misuzu Miyake

[www.art-dept.com](http://www.art-dept.com)

# Art Department



Misuzu Miyake

[www.art-dept.com](http://www.art-dept.com)



# Art Department



Misuzu Miyake

[www.art-dept.com](http://www.art-dept.com)



# Art Department



Misuzu Miyake

[www.art-dept.com](http://www.art-dept.com)



# Art Department



Misuzu Miyake

[www.art-dept.com](http://www.art-dept.com)

# Art Department



Misuzu Miyake

[www.art-dept.com](http://www.art-dept.com)



# Art Department



Misuzu Miyake

[www.art-dept.com](http://www.art-dept.com)

# Art Department



Misuzu Miyake

[www.art-dept.com](http://www.art-dept.com)



# Art Department



Misuzu Miyake

[www.art-dept.com](http://www.art-dept.com)

# Art Department



Misuzu Miyake

[www.art-dept.com](http://www.art-dept.com)



# Art Department



Misuzu Miyake

[www.art-dept.com](http://www.art-dept.com)

# Art Department



Harper's  
**BAZAAR**  
BEAUTY

**DODIR TOPLINE**

Zlatni tonovi na očima i nijanse breskve na usnama, suptilni su obrisi lica na osunčanoj koži

*Fotografije: Monika Lis      Šminkerka: Misuzu Miyake*

KOSA **Bumble Bumble** Thickening Spray, sprej za volumen kose, [bumbleandbumble.com](http://bumbleandbumble.com); **Kérastase** Volume Mousse, pena za volumen, 3.000 dinara; **L'Oréal** Elneet Hairspray, lak za kosu, 2.100 dinara; **Evo** Water Killer Dry Shampoo, suvi šampon, [evohair.com](http://evohair.com); **ŠMINKA** Ten: **Omorovicza** Queen of Hungary Mist, sprej za lice, [omorovicza.com](http://omorovicza.com); Tečni puder: **Clé de peau** O 20, [cledepeau-beaute.com](http://cledepeau-beaute.com); Korektor: **Laura Mercier** Secret Camouflage SC-2 & SC-3, [lauramercier.com](http://lauramercier.com); Obrve: **Anastasia Beverly Hills** Dipbrow Pomade Blond, pomada za obrve, [anastasiabeverlyhills.com](http://anastasiabeverlyhills.com); Maskara: **Maybelline** Define-A-Lash, [maybelline.com](http://maybelline.com); Usne i oči: **Elizabeth Arden** Eight Hour Cream, višenamenska krema za kožu, [elizabetharden.com](http://elizabetharden.com); **NAKIT** Minduše: DJULA

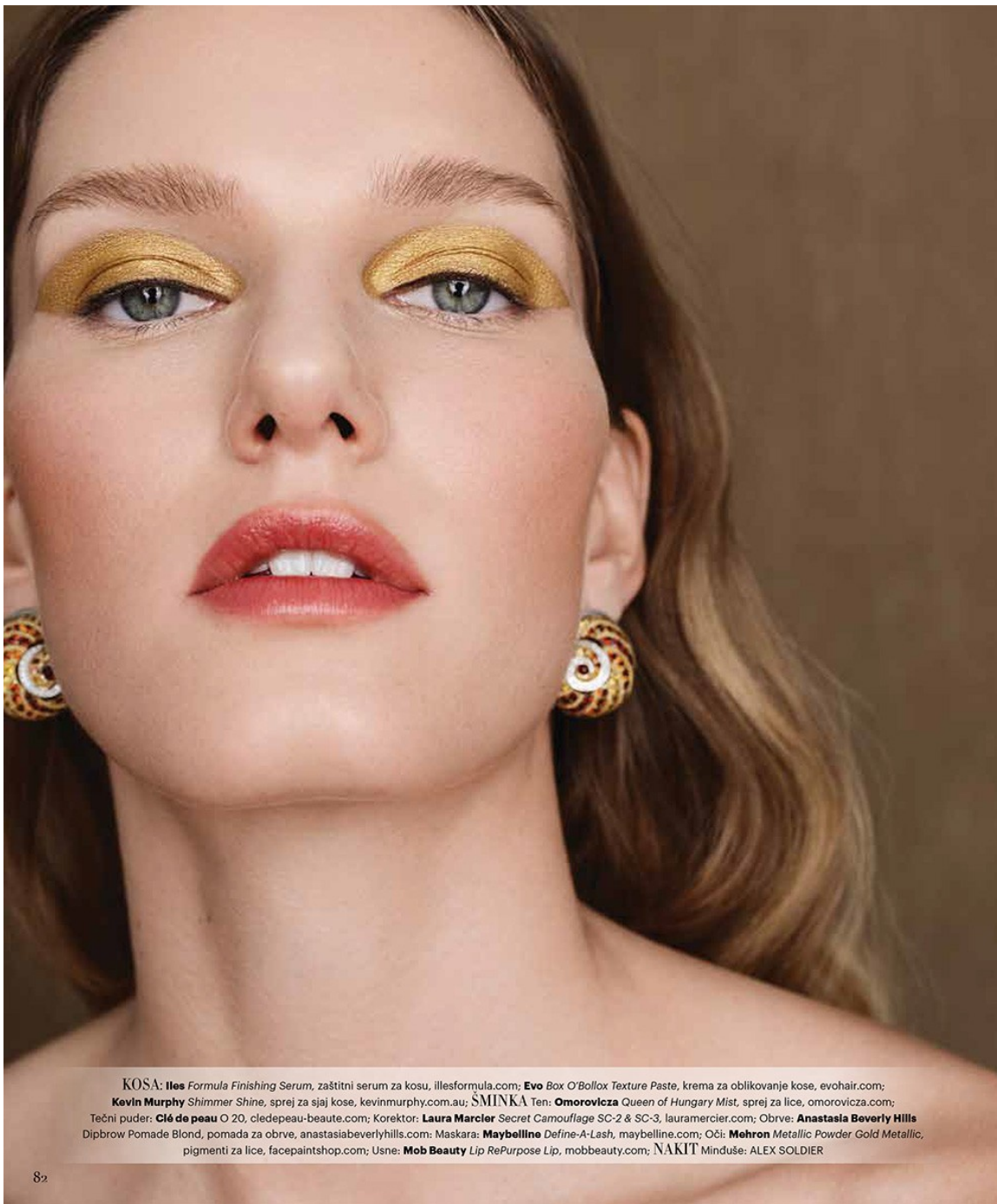
81

## Misuzu Miyake

[www.art-dept.com](http://www.art-dept.com)



# Art Department



82

## Misuzu Miyake

[www.art-dept.com](http://www.art-dept.com)

# Art Department



Misuzu Miyake

[www.art-dept.com](http://www.art-dept.com)



# Art Department



Misuzu Miyake

[www.art-dept.com](http://www.art-dept.com)

# Art Department

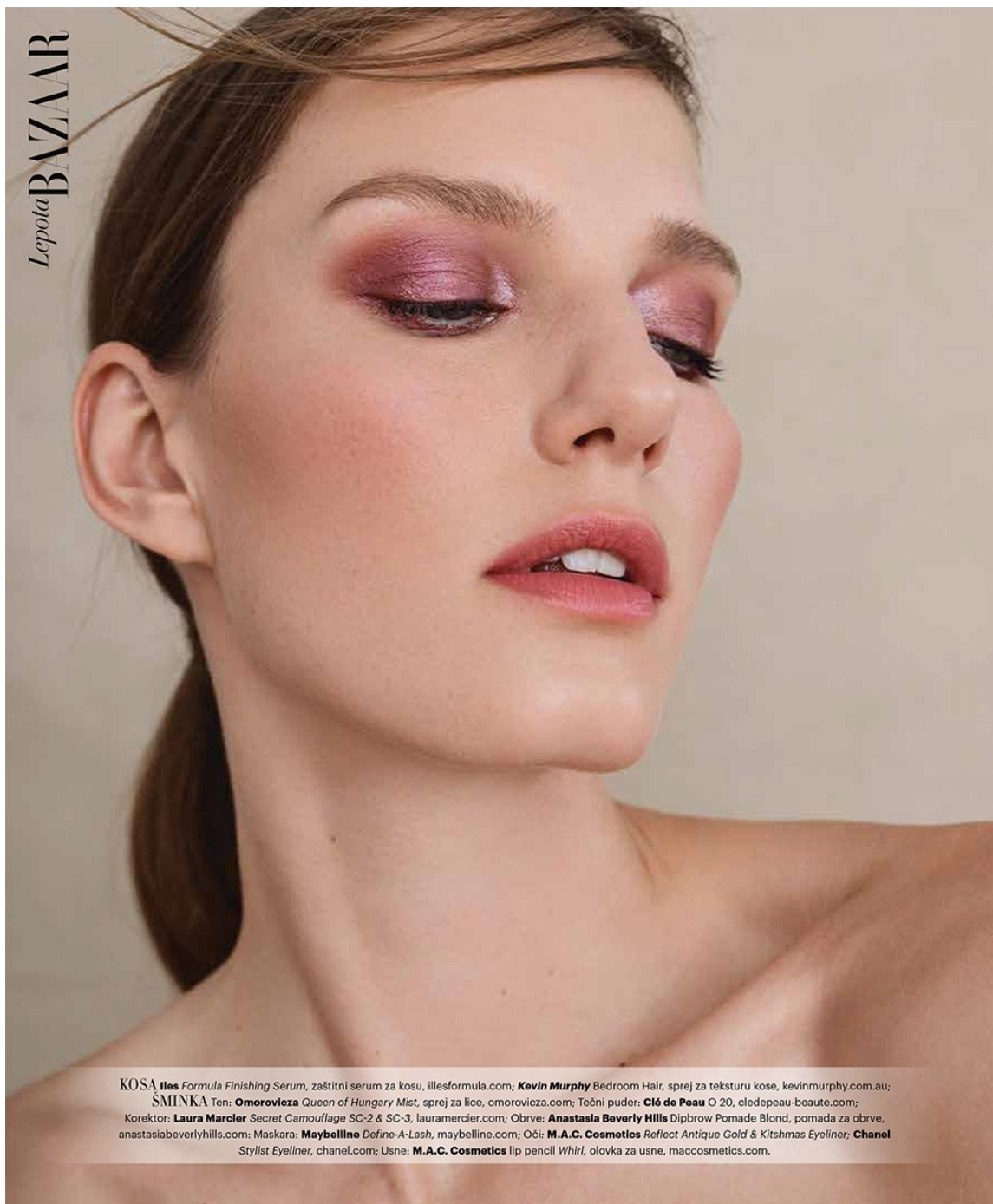


Misuzu Miyake

[www.art-dept.com](http://www.art-dept.com)



# Art Department



KOSA **Illes** Formula Finishing Serum, zaštitni serum za kosu, illesformula.com; **Kevin Murphy** Bedroom Hair, sprej za teksturu kose, kevinmurphy.com.au;  
SMINKA Ten: **Omorovicza** Queen of Hungary Mist, sprej za lice, omorovicza.com; Tečni puder: **Clé de Peau** O 20, cledepeau-beaute.com;  
Korektor: **Laura Mercier** Secret Camouflage SC-2 & SC-3, lauramercier.com; Obrve: **Anastasia Beverly Hills** Dipbrow Pomade Blond, pomada za obrve,  
anastasiabeverlyhills.com; Maskara: **Maybelline** Define-A-Lash, maybelline.com; Oči: **M.A.C. Cosmetics** Reflect Antique Gold & Kitshmas Eyeliner; **Chanel**  
Stylist Eyeliner, chanel.com; Usne: **M.A.C. Cosmetics** lip pencil Whirl, olovka za usne, maccosmetics.com.

## Misuzu Miyake

[www.art-dept.com](http://www.art-dept.com)

# Art Department



Misuzu Miyake

[www.art-dept.com](http://www.art-dept.com)



# Art Department



Fotografirala: Konika Lis, Model: Marique Schimmel za Fusion Models NYC, Šminkarka: Misuzu Miyake, Frizerka: Destiny Venice, Stilistinja: Isa White, Obrada fotografija: Anastasia Vakhtova

NA OVOJ STRANI: KOSA: **Illes** Formula Finishing Serum, zaštitni serum za kosu, illesformula.com; **Kevin Murphy** Bedroom Hair, sprej za teksturu kose, kevinmurphy.com.au; ŠMINKA Ten: **Omorovicza** Queen of Hungary Mist, sprej za lice, omorovicza.com; Tečni puder: **Clô de Peau** O 20, cledypeau-beaute.com; Korektor: **Laura Mercier** Secret Camouflage SC-2 & SC-3, lauramercier.com; Obrve: **Anastasia Beverly Hills** Dipbrow Pomade Blond, pomada za obrve, anastasiabeverlyhills.com; Maskara: **Maybelline** Define-A-Lash, maybelline.com; Ajlajner: **Chanel** Stylist Eye Liner Pen Noir, chanel.com; Usne: **Mob Beauty** Lip RePurpose Lip, mobbeauty.com; **NAKIT** Minduše: LE VIAN

83

## Misuzu Miyake

[www.art-dept.com](http://www.art-dept.com)

# Art Department



Misuzu Miyake

[www.art-dept.com](http://www.art-dept.com)



# Art Department



Misuzu Miyake

[www.art-dept.com](http://www.art-dept.com)



# Art Department



Misuzu Miyake

[www.art-dept.com](http://www.art-dept.com)



# Art Department



Misuzu Miyake

[www.art-dept.com](http://www.art-dept.com)



# Art Department



Misuzu Miyake

[www.art-dept.com](http://www.art-dept.com)



# Art Department



Misuzu Miyake

[www.art-dept.com](http://www.art-dept.com)

# Art Department



Misuzu Miyake

[www.art-dept.com](http://www.art-dept.com)



# Art Department



Misuzu Miyake

[www.art-dept.com](http://www.art-dept.com)

# Art Department



Misuzu Miyake

[www.art-dept.com](http://www.art-dept.com)



# Art Department



Misuzu Miyake

[www.art-dept.com](http://www.art-dept.com)

# Art Department



Misuzu Miyake

[www.art-dept.com](http://www.art-dept.com)



# Art Department



Misuzu Miyake

[www.art-dept.com](http://www.art-dept.com)



# Art Department



Misuzu Miyake

[www.art-dept.com](http://www.art-dept.com)



# Art Department



Misuzu Miyake

[www.art-dept.com](http://www.art-dept.com)

# Art Department



Misuzu Miyake

[www.art-dept.com](http://www.art-dept.com)



# Art Department



Misuzu Miyake

[www.art-dept.com](http://www.art-dept.com)

# Art Department



Misuzu Miyake

[www.art-dept.com](http://www.art-dept.com)



# Art Department



Misuzu Miyake

[www.art-dept.com](http://www.art-dept.com)

# Art Department



Misuzu Miyake

[www.art-dept.com](http://www.art-dept.com)



# Art Department



Misuzu Miyake

[www.art-dept.com](http://www.art-dept.com)

# Art Department



Misuzu Miyake

[www.art-dept.com](http://www.art-dept.com)



# Art Department



Misuzu Miyake

[www.art-dept.com](http://www.art-dept.com)

# Art Department



Misuzu Miyake

[www.art-dept.com](http://www.art-dept.com)



# Art Department



Misuzu Miyake

[www.art-dept.com](http://www.art-dept.com)

# Art Department



Misuzu Miyake

[www.art-dept.com](http://www.art-dept.com)



# Art Department

LUCY'S 174



## Misuzu Miyake

[www.art-dept.com](http://www.art-dept.com)



# Art Department



Misuzu Miyake

[www.art-dept.com](http://www.art-dept.com)



# Art Department



LUCY'S 181

Misuzu Miyake

[www.art-dept.com](http://www.art-dept.com)

# Art Department



Misuzu Miyake

[www.art-dept.com](http://www.art-dept.com)



# Art Department



Misuzu Miyake

[www.art-dept.com](http://www.art-dept.com)

# Art Department



Misuzu Miyake

[www.art-dept.com](http://www.art-dept.com)



# Art Department



Misuzu Miyake

[www.art-dept.com](http://www.art-dept.com)



# Art Department



Misuzu Miyake

[www.art-dept.com](http://www.art-dept.com)



# Art Department



Misuzu Miyake

[www.art-dept.com](http://www.art-dept.com)



# Art Department



Misuzu Miyake

[www.art-dept.com](http://www.art-dept.com)



# Art Department



Misuzu Miyake

[www.art-dept.com](http://www.art-dept.com)

# Art Department



Misuzu Miyake

[www.art-dept.com](http://www.art-dept.com)



# Art Department



Misuzu Miyake

[www.art-dept.com](http://www.art-dept.com)

# Art Department



Misuzu Miyake

[www.art-dept.com](http://www.art-dept.com)



# Art Department



Misuzu Miyake

[www.art-dept.com](http://www.art-dept.com)



# Art Department



Misuzu Miyake

[www.art-dept.com](http://www.art-dept.com)



# Art Department



Misuzu Miyake

[www.art-dept.com](http://www.art-dept.com)



# Art Department



Misuzu Miyake

[www.art-dept.com](http://www.art-dept.com)



# Art Department



Misuzu Miyake

[www.art-dept.com](http://www.art-dept.com)



# Art Department



Misuzu Miyake

[www.art-dept.com](http://www.art-dept.com)



# Art Department



Misuzu Miyake

[www.art-dept.com](http://www.art-dept.com)



# Art Department



Misuzu Miyake

[www.art-dept.com](http://www.art-dept.com)



# Art Department



Misuzu Miyake

[www.art-dept.com](http://www.art-dept.com)



# Art Department



Misuzu Miyake

[www.art-dept.com](http://www.art-dept.com)



# Art Department



Misuzu Miyake

[www.art-dept.com](http://www.art-dept.com)

# Art Department



Misuzu Miyake

[www.art-dept.com](http://www.art-dept.com)



# Art Department



Misuzu Miyake

[www.art-dept.com](http://www.art-dept.com)



# Art Department



Misuzu Miyake

[www.art-dept.com](http://www.art-dept.com)



# Art Department



Misuzu Miyake

[www.art-dept.com](http://www.art-dept.com)



# Art Department

## SHOWSTOPPER

Trade the 2020 party mask for these next-level gold-flecked eyes. First, apply Lancôme Ombre Hypnôse Stylo Shadow Stick in Monogold (\$25, lancome-usa.com) on top of and underneath lids. Then smooth Elizabeth Arden Eight Hour Cream (\$24, elizabetharden.com) onto lids and cheekbones. "This balm acts like a glue to hold the gold foil on the skin," says Misuzu Miyake, the makeup artist who created the looks in this story. Now use tweezers to artfully scatter Kryolan Metallic Flakes (\$11, us.kryolan.com).

*eyes that*  
**pop**

OUR PLAN FOR PARTY  
MAKEUP: JUST DO  
THE EYES. WHEN THEY  
LOOK THIS FIERCE,  
THEY'RE ALL YOU NEED TO  
MAKE A STATEMENT.

by KATE SANDOVAL BOX  
photographs by KOUROSII SOTOODEH

## Misuzu Miyake

[www.art-dept.com](http://www.art-dept.com)



# Art Department



## MODERN MYSTIC

The intrigue is in the details: Miyake stacked two different blue shadows to create depth and staying power: BareMinerals Loose Mineral Eyecolor in Chameleon (\$15, [bareminerals.com](http://bareminerals.com)) and MAC Cosmetics Glitter in Teal Hologram (\$22, [maccosmetics.com](http://maccosmetics.com)). Then she lined up crystals (four medium, three small—find face gems on Amazon) along lower lashes.

## Misuzu Miyake

[www.art-dept.com](http://www.art-dept.com)



# Art Department



## THE RED QUEEN

A good philosophy for party clothes and red eye shadow: the bolder the better. Sheer washes of red are known for causing a sickly effect. This strong crimson drawn with a precise flick has the opposite effect. Wet your liner brush before dipping it in Melt Cosmetics shadow in Love Sick (\$17, [meltcosmetics.com](http://meltcosmetics.com)).

## Misuzu Miyake

[www.art-dept.com](http://www.art-dept.com)



# Art Department

## COUPLE GOALS

Pairing up warm copper and cool purple shadows creates a can't-look-away contrast. Press MAC Cosmetics Pigment in Copper (\$22, [maccosmetics.com](http://maccosmetics.com)) into the inner corners of the eyes and along the lower lashes, then add a purple cream shadow (like Flower Beauty Pop Fanatic Eye Pigment in Fizz, \$9, [flowerbeauty.com](http://flowerbeauty.com)) on most of the upper lid. "Blend the two with a fluffy brush, but only a bit. The casualness makes it look like they melt into each other," Miyake says.

Brixton Piper Fedora (\$75, [brixton.com](http://brixton.com)). Opposite page: Sally LaPointe Oxblood alpaca turtleneck (\$1,550, [sallylapointe.com](http://sallylapointe.com)).



## Misuzu Miyake

[www.art-dept.com](http://www.art-dept.com)



# Art Department



Misuzu Miyake

[www.art-dept.com](http://www.art-dept.com)



# Art Department



## THE OUTLINERS

Making your black eyeliner this distinctive requires a tiny, short-bristled makeup brush, black cream eyeliner (like Chanel Calligraphie de Chanel Longwear Intense Cream Eyeliner in Hyperblack, \$35, [chanel.com](http://chanel.com)), and a steady hand. Swirl the brush in your liner, then sketch a half circle around each eye, staying above your crease.

Ramy Brook Dahlia jacket (\$595, [ramybrook.com](http://ramybrook.com)).  
Opposite page: Ganni Sequin Mesh top (\$450, [ganni.com](http://ganni.com)).

## Misuzu Miyake

[www.art-dept.com](http://www.art-dept.com)



# Art Department



Misuzu Miyake

[www.art-dept.com](http://www.art-dept.com)



# Art Department



Misuzu Miyake

[www.art-dept.com](http://www.art-dept.com)



# Art Department



Misuzu Miyake

[www.art-dept.com](http://www.art-dept.com)



# Art Department



Misuzu Miyake

[www.art-dept.com](http://www.art-dept.com)

# Art Department



Misuzu Miyake

[www.art-dept.com](http://www.art-dept.com)



# Art Department



Misuzu Miyake

[www.art-dept.com](http://www.art-dept.com)



# Art Department



Misuzu Miyake

[www.art-dept.com](http://www.art-dept.com)



# Art Department



Misuzu Miyake

[www.art-dept.com](http://www.art-dept.com)



# Art Department



Misuzu Miyake

[www.art-dept.com](http://www.art-dept.com)



# Art Department



Shirt Vintage SONIA RYKIEL at ohr.nyc  
Earrings customized at ohr.nyc

## Misuzu Miyake

[www.art-dept.com](http://www.art-dept.com)



# Art Department



Top Laurence & Chico

Photographer TAKAHIRO OGAWA at Factory Downtown

Stylist NADIA RATH at Holly Corbett Represents

Hair Stylist KABUTO OKUZAWA

Makeup Artist MISUZU MIYAKE using M.A.C Cosmetics at Art Department

Models ALICIA HOLTZ, ANA CRISTINA, ALECIA RODRIGUEZ, BRUNA TENORIO, LUZ PAVON at New York Model Management

## Misuzu Miyake

[www.art-dept.com](http://www.art-dept.com)



# Art Department



Misuzu Miyake

[www.art-dept.com](http://www.art-dept.com)



# Art Department



Misuzu Miyake

[www.art-dept.com](http://www.art-dept.com)



# Art Department



Misuzu Miyake

[www.art-dept.com](http://www.art-dept.com)



# Art Department



Misuzu Miyake

[www.art-dept.com](http://www.art-dept.com)



# Art Department



Misuzu Miyake

[www.art-dept.com](http://www.art-dept.com)



# Art Department



Misuzu Miyake

[www.art-dept.com](http://www.art-dept.com)



# Art Department



Misuzu Miyake

[www.art-dept.com](http://www.art-dept.com)



# Art Department



Misuzu Miyake

[www.art-dept.com](http://www.art-dept.com)



# Art Department



Misuzu Miyake

[www.art-dept.com](http://www.art-dept.com)



# Art Department



Misuzu Miyake

[www.art-dept.com](http://www.art-dept.com)



# Art Department



Misuzu Miyake

[www.art-dept.com](http://www.art-dept.com)

# Art Department



Misuzu Miyake

[www.art-dept.com](http://www.art-dept.com)



# Art Department



Misuzu Miyake

[www.art-dept.com](http://www.art-dept.com)



# Art Department



Misuzu Miyake

[www.art-dept.com](http://www.art-dept.com)



# Art Department



Misuzu Miyake

[www.art-dept.com](http://www.art-dept.com)



# Art Department



Misuzu Miyake

[www.art-dept.com](http://www.art-dept.com)



# Art Department



Misuzu Miyake

[www.art-dept.com](http://www.art-dept.com)

# Art Department



Misuzu Miyake

[www.art-dept.com](http://www.art-dept.com)



# Art Department



Misuzu Miyake

[www.art-dept.com](http://www.art-dept.com)

# Art Department

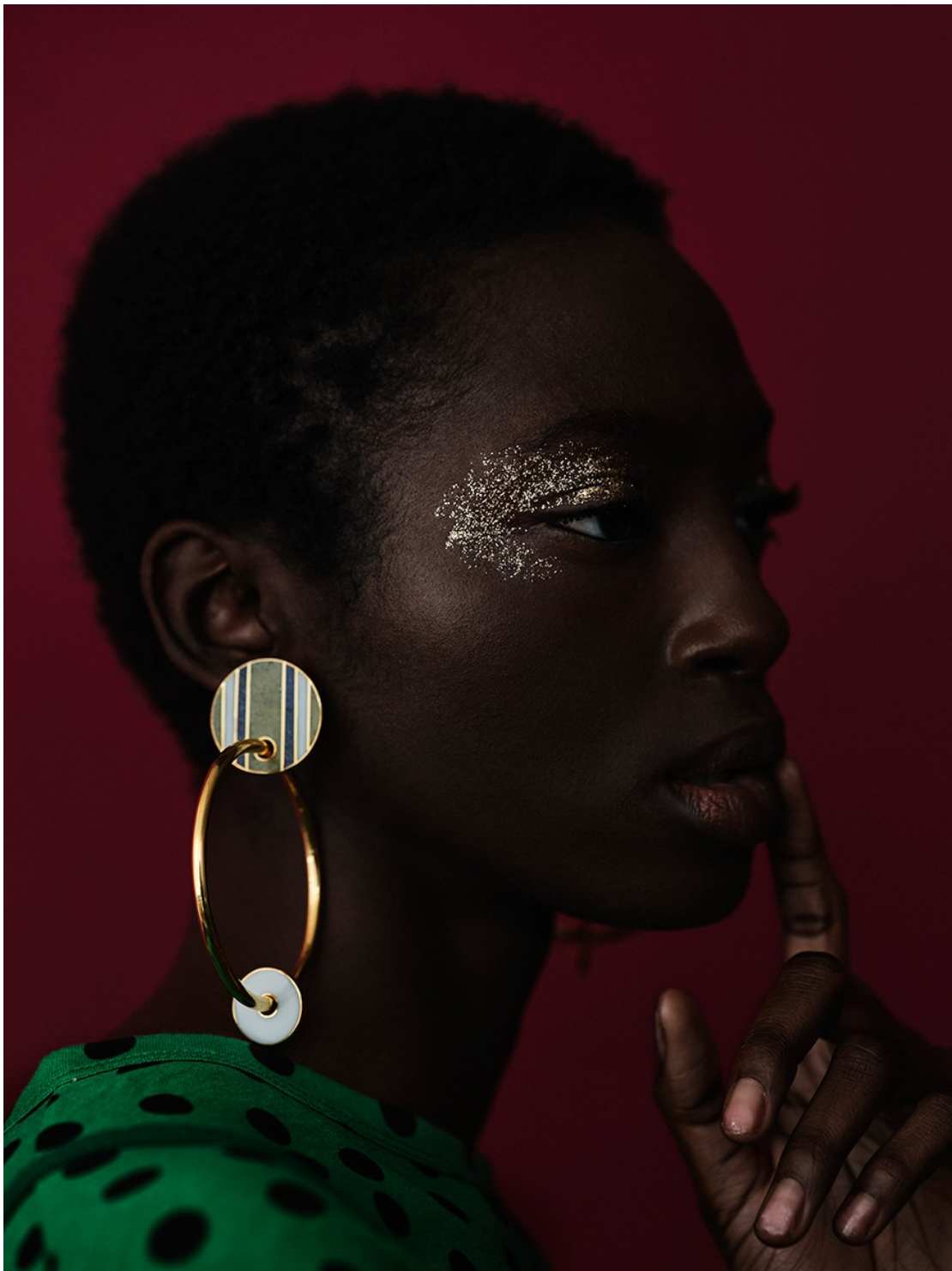


Misuzu Miyake

[www.art-dept.com](http://www.art-dept.com)



# Art Department



Misuzu Miyake

[www.art-dept.com](http://www.art-dept.com)

# Art Department



Misuzu Miyake

[www.art-dept.com](http://www.art-dept.com)



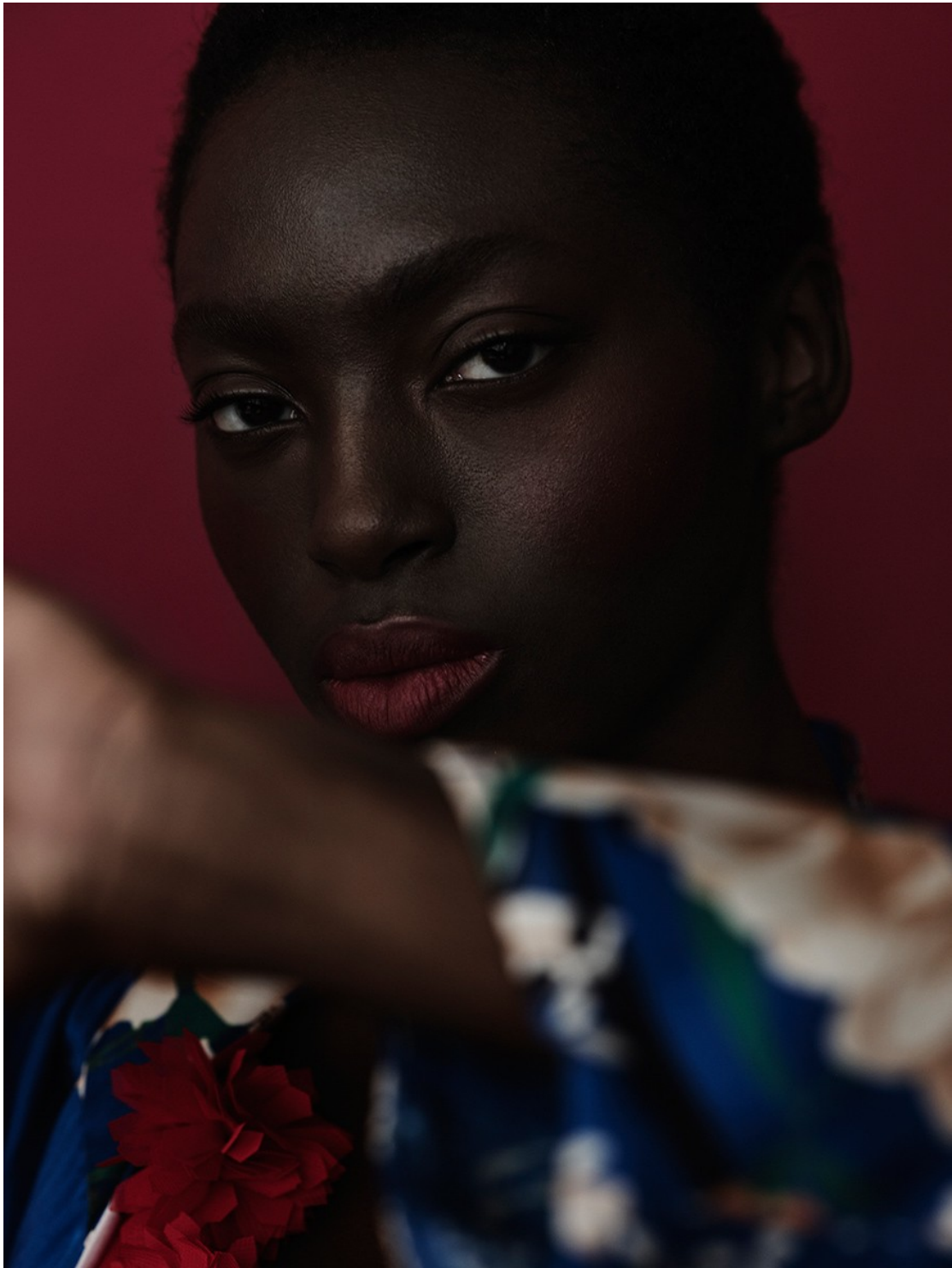
# Art Department



Misuzu Miyake

[www.art-dept.com](http://www.art-dept.com)

# Art Department



Misuzu Miyake

[www.art-dept.com](http://www.art-dept.com)



# Art Department



Misuzu Miyake

[www.art-dept.com](http://www.art-dept.com)

# Art Department



Misuzu Miyake

[www.art-dept.com](http://www.art-dept.com)



# Art Department



Misuzu Miyake

[www.art-dept.com](http://www.art-dept.com)

# Art Department



Misuzu Miyake

[www.art-dept.com](http://www.art-dept.com)



# Art Department



Misuzu Miyake

[www.art-dept.com](http://www.art-dept.com)

# Art Department



Misuzu Miyake

[www.art-dept.com](http://www.art-dept.com)



# Art Department



Misuzu Miyake

[www.art-dept.com](http://www.art-dept.com)

# Art Department



Misuzu Miyake

[www.art-dept.com](http://www.art-dept.com)



# Art Department



Misuzu Miyake

[www.art-dept.com](http://www.art-dept.com)

# Art Department



Misuzu Miyake

[www.art-dept.com](http://www.art-dept.com)



# Art Department



Misuzu Miyake

[www.art-dept.com](http://www.art-dept.com)

# Art Department



Misuzu Miyake

[www.art-dept.com](http://www.art-dept.com)



# Art Department



Misuzu Miyake

[www.art-dept.com](http://www.art-dept.com)

# Art Department



Misuzu Miyake

[www.art-dept.com](http://www.art-dept.com)



# Art Department



Misuzu Miyake

[www.art-dept.com](http://www.art-dept.com)

# Art Department



Misuzu Miyake

[www.art-dept.com](http://www.art-dept.com)



# Art Department



Misuzu Miyake

[www.art-dept.com](http://www.art-dept.com)

# Art Department



Misuzu Miyake

[www.art-dept.com](http://www.art-dept.com)



# Art Department



Misuzu Miyake

[www.art-dept.com](http://www.art-dept.com)



# Art Department



Misuzu Miyake

[www.art-dept.com](http://www.art-dept.com)



# Art Department



Misuzu Miyake

[www.art-dept.com](http://www.art-dept.com)

# Art Department



Misuzu Miyake

[www.art-dept.com](http://www.art-dept.com)



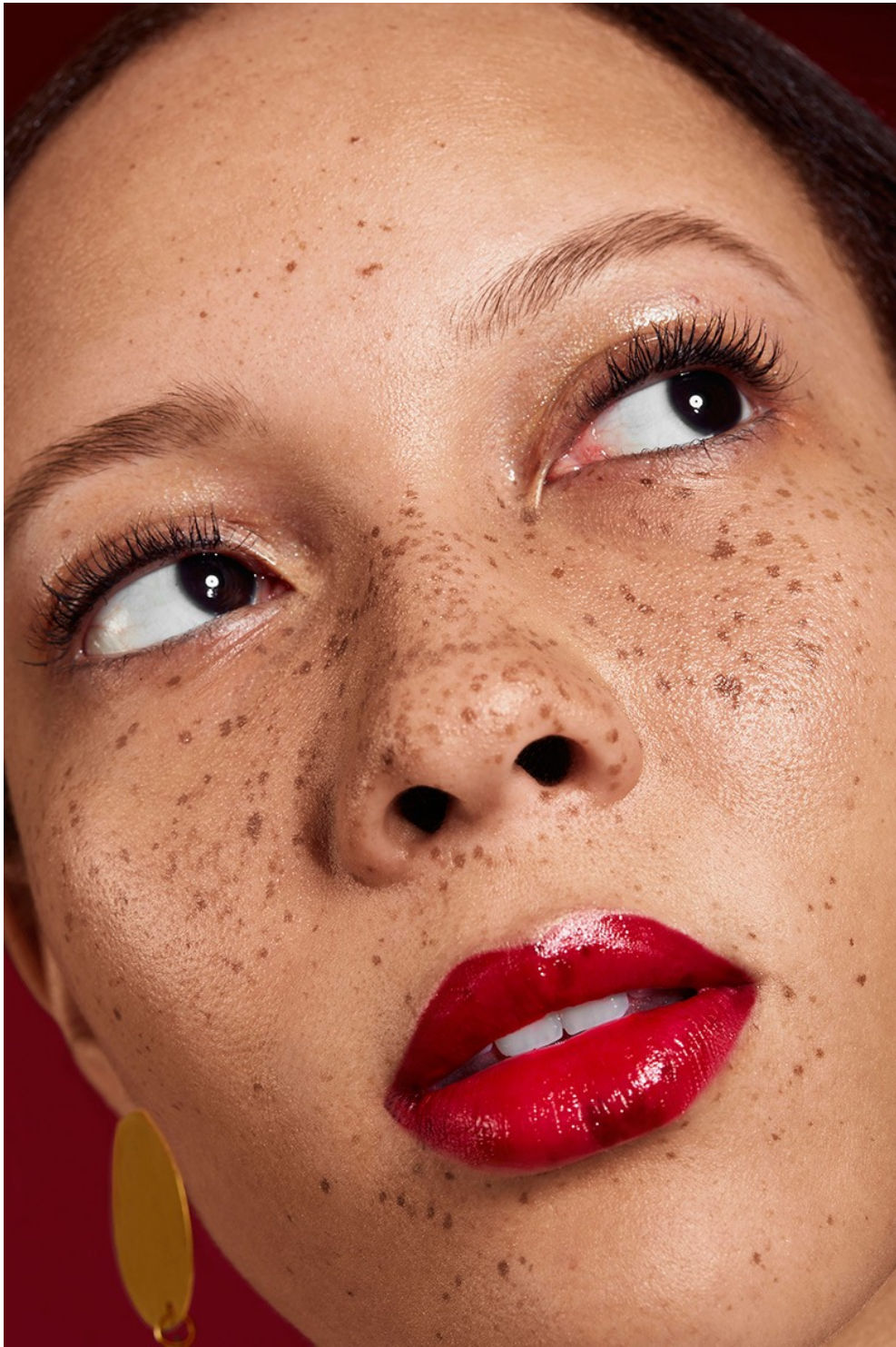
# Art Department



Misuzu Miyake

[www.art-dept.com](http://www.art-dept.com)

# Art Department



Misuzu Miyake

[www.art-dept.com](http://www.art-dept.com)



# Art Department



Misuzu Miyake

[www.art-dept.com](http://www.art-dept.com)

# Art Department



Misuzu Miyake

[www.art-dept.com](http://www.art-dept.com)



# Art Department



Misuzu Miyake

[www.art-dept.com](http://www.art-dept.com)

# Art Department



Misuzu Miyake

[www.art-dept.com](http://www.art-dept.com)



# Art Department



Misuzu Miyake

[www.art-dept.com](http://www.art-dept.com)



# Art Department

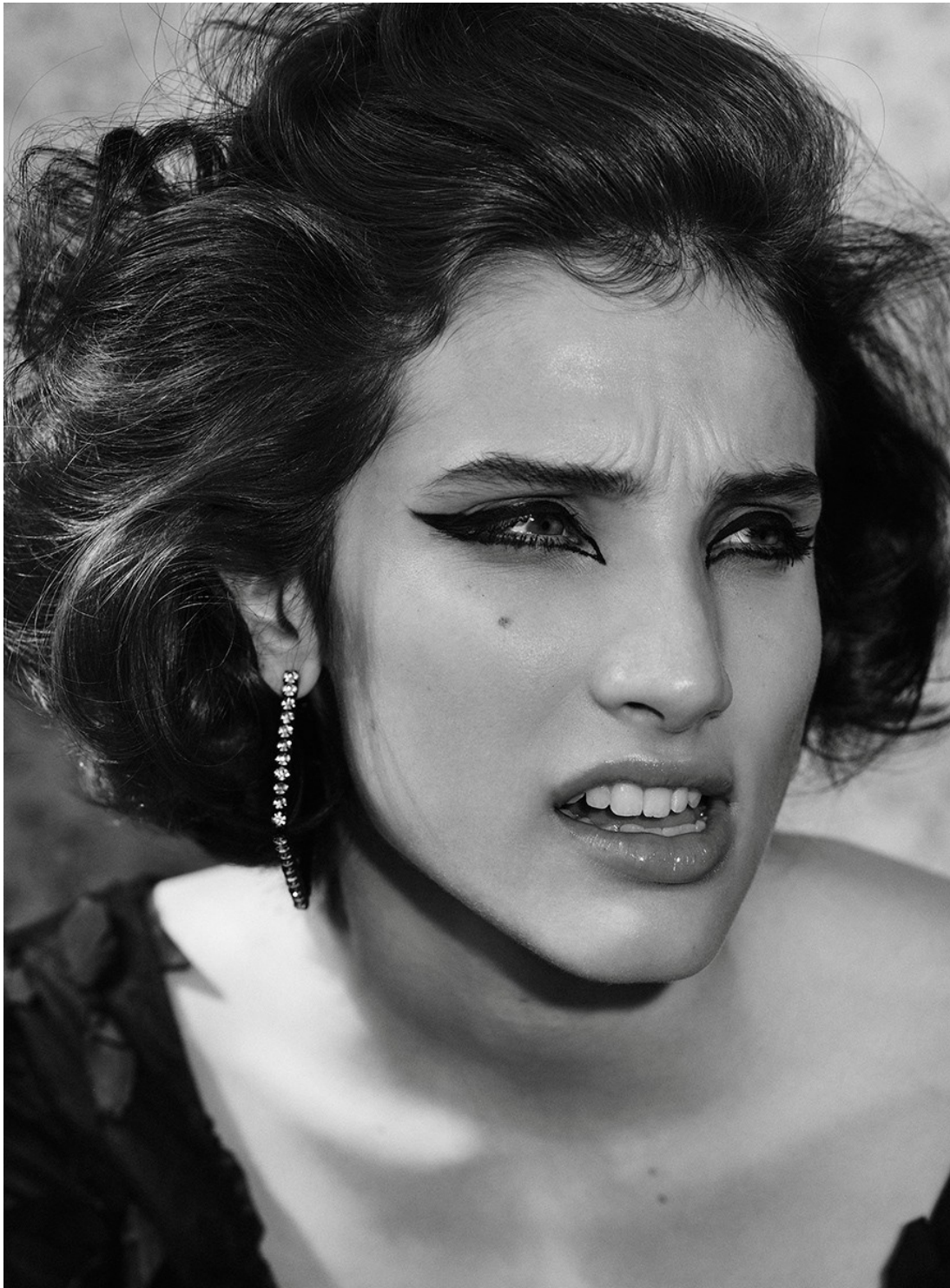


Misuzu Miyake

[www.art-dept.com](http://www.art-dept.com)



# Art Department



Misuzu Miyake

[www.art-dept.com](http://www.art-dept.com)

# Art Department



Misuzu Miyake

[www.art-dept.com](http://www.art-dept.com)



# Art Department



Misuzu Miyake

[www.art-dept.com](http://www.art-dept.com)



# Art Department



Misuzu Miyake

[www.art-dept.com](http://www.art-dept.com)



# Art Department



Misuzu Miyake

[www.art-dept.com](http://www.art-dept.com)



# Art Department



Misuzu Miyake

[www.art-dept.com](http://www.art-dept.com)



# Art Department



Misuzu Miyake

[www.art-dept.com](http://www.art-dept.com)



# Art Department



Misuzu Miyake

[www.art-dept.com](http://www.art-dept.com)



# Art Department



Misuzu Miyake

[www.art-dept.com](http://www.art-dept.com)

# Art Department

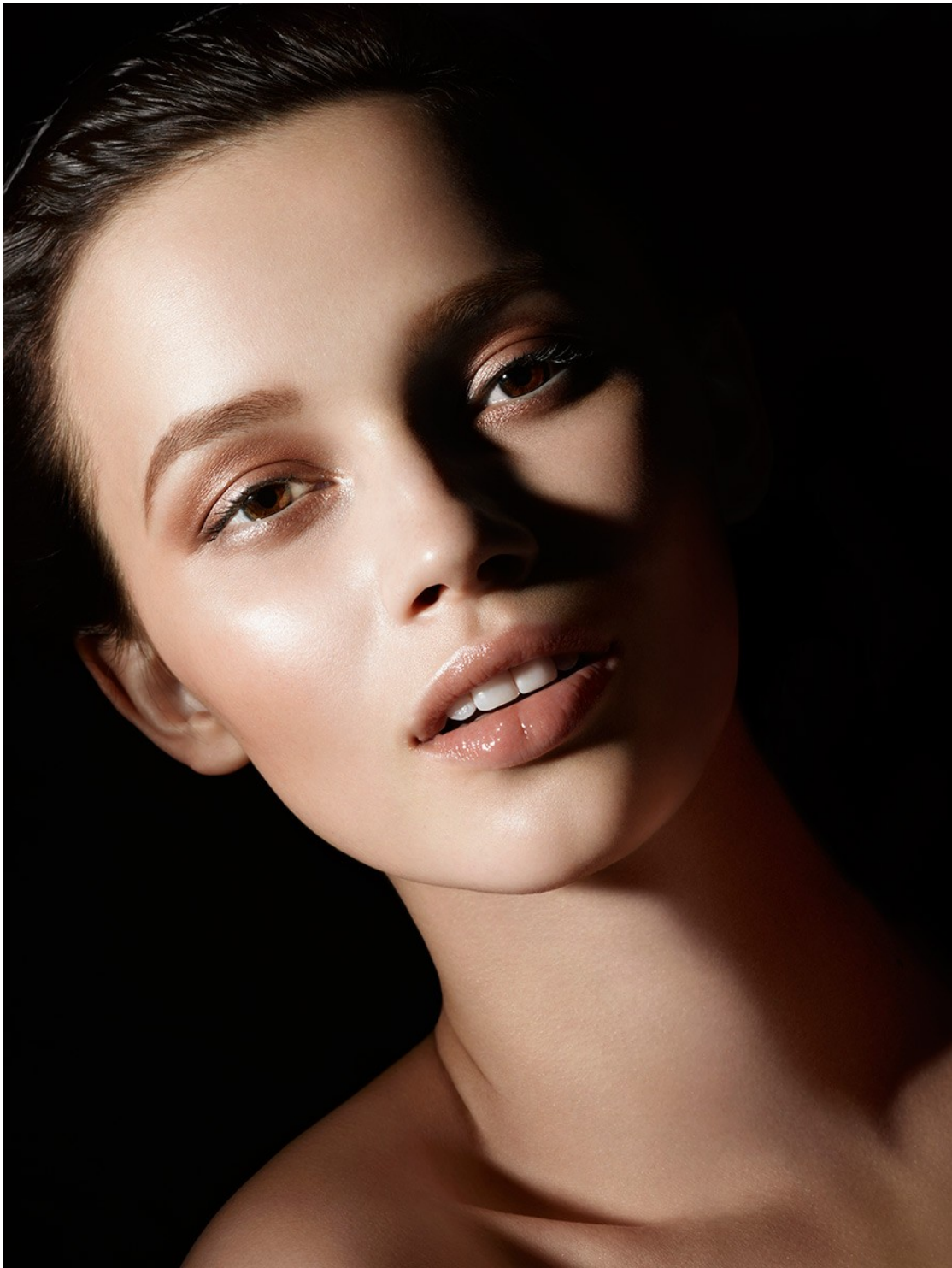


Misuzu Miyake

[www.art-dept.com](http://www.art-dept.com)



# Art Department



Misuzu Miyake

[www.art-dept.com](http://www.art-dept.com)

# Art Department



Misuzu Miyake

[www.art-dept.com](http://www.art-dept.com)



# Art Department



Misuzu Miyake

[www.art-dept.com](http://www.art-dept.com)

# Art Department



Misuzu Miyake

[www.art-dept.com](http://www.art-dept.com)



# Art Department



Misuzu Miyake

[www.art-dept.com](http://www.art-dept.com)

# Art Department



Misuzu Miyake

[www.art-dept.com](http://www.art-dept.com)



# Art Department



Misuzu Miyake

[www.art-dept.com](http://www.art-dept.com)

# Art Department



Misuzu Miyake

[www.art-dept.com](http://www.art-dept.com)



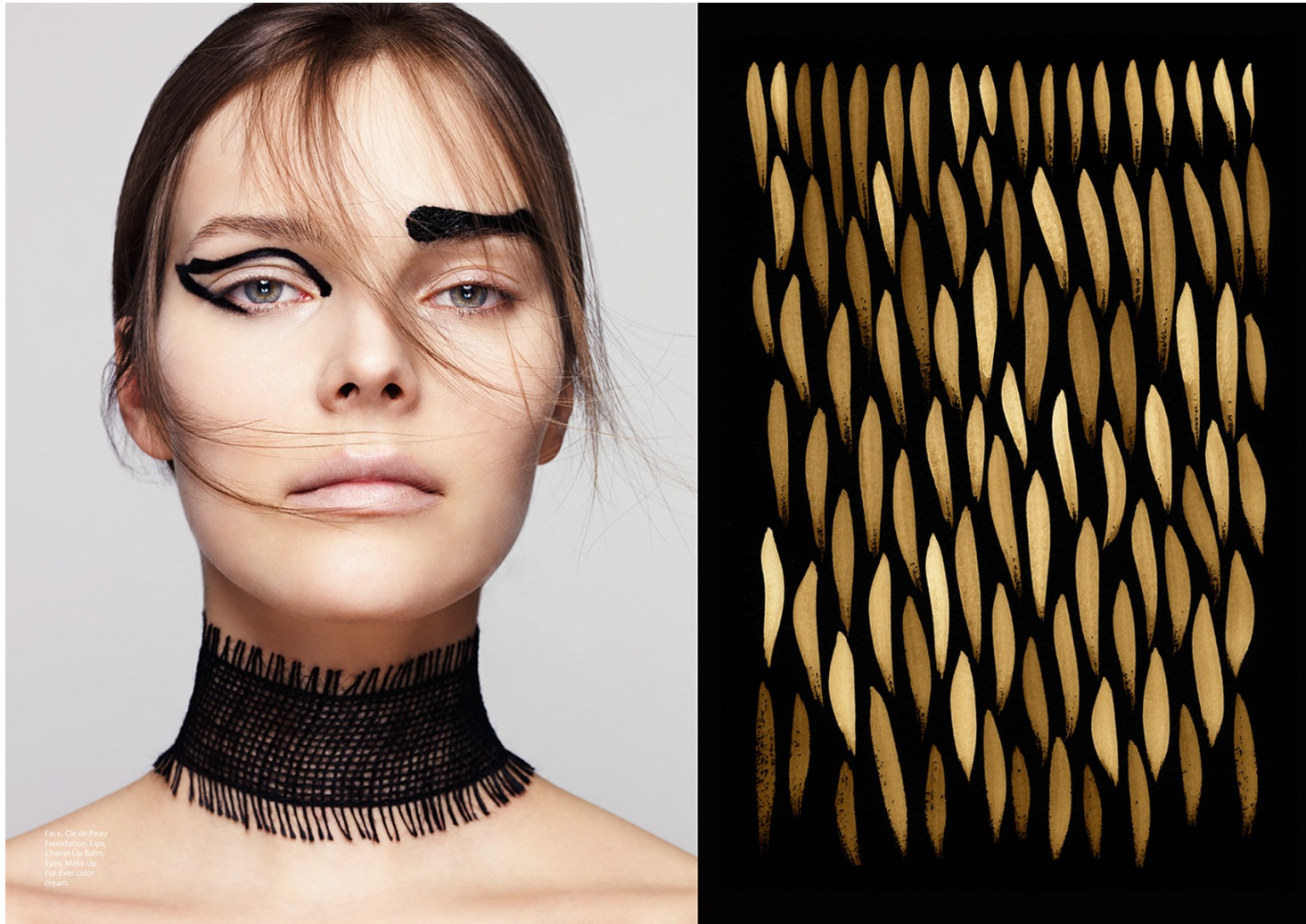
# Art Department



Misuzu Miyake

[www.art-dept.com](http://www.art-dept.com)

# Art Department



Misuzu Miyake

[www.art-dept.com](http://www.art-dept.com)



# Art Department



Misuzu Miyake

[www.art-dept.com](http://www.art-dept.com)



# Art Department



Misuzu Miyake

[www.art-dept.com](http://www.art-dept.com)



# Art Department



Misuzu Miyake

[www.art-dept.com](http://www.art-dept.com)

# Art Department



Misuzu Miyake

[www.art-dept.com](http://www.art-dept.com)



# Art Department



Misuzu Miyake

[www.art-dept.com](http://www.art-dept.com)



# Art Department



Misuzu Miyake

[www.art-dept.com](http://www.art-dept.com)



# Art Department



Misuzu Miyake

[www.art-dept.com](http://www.art-dept.com)

# Art Department



Misuzu Miyake

[www.art-dept.com](http://www.art-dept.com)



# Art Department



Misuzu Miyake

[www.art-dept.com](http://www.art-dept.com)

# Art Department

## ELLE beauty

фотограф: LAURA ROSE, грим: MARISSA ADELE, стили: MISUZU MIYAKE © M.A.C. COSMETICS, коса: YUKIKO TAMAKI © WM ARTIST MANAGEMENT с прическу на ORBEE HAIR CARE, маникюр: MICHELLE MATTHEWS с прическу на ZOYA NAIL POLISH, ноготок: NELLI © WOMEN/360 MANAGEMENT, перуна: PARI KANG

Защото е цветна,  
защото е красива,  
защото е зареждаща...

Риза и бродка  
VINTAGE или  
VINTAGE DIANE  
VON FURSTENBERG  
очила: АРХИВ НА  
СТИЛИСТА

Об(л)ичаме  
пролетта!

# Misuzu Miyake

[www.art-dept.com](http://www.art-dept.com)



# Art Department



Рокля VINTAGE обеци  
АРХИВ НА СТИЛИСТА  
текстилно копие  
MIU MIU шал  
VINTAGE EVAN  
PICENO

НОВАТА ХИПИ ВИЗИЯ  
Големите обеци и тюрба-  
ният предполагат минимално  
количество цвят върху лице-  
то – добра основа плюс соч-  
ни устни в розов или праско-  
вен отенък и приключване.

**ГОЛЕМИЯТ ЕФЕКТ**  
**е в малките детайли**

Misuzu Miyake

[www.art-dept.com](http://www.art-dept.com)



# Art Department



## ЦВЕТНИ КОНТРАСТИ

С две ръце гласуваме  
за комбинацията от  
лазурно синьо за очите  
(използвайте целия  
арсенал от сенки, моливи,  
спирали...), страстни  
устни в червено и...  
слънчев маникюр в  
слънчево жълто.

Рокля VINTAGE  
уши VINTAGE  
OSCAR DE LA  
RENTA

## Misuzu Miyake

[www.art-dept.com](http://www.art-dept.com)



# Art Department



ELLE красота

**ELLE стайлинг**  
идея: шалът върху  
спортна шапка е  
гениално решение!

**Грим съвет:** ако ще  
експериментирате с жълт  
маникюр, оставете той да е  
акцентът и за лицето изберете  
цветове в гамата на дрехите и  
аксесоарите, които просто да  
подчертават, без да се  
открояват.

Бого VINTAGE  
тренинг VALENTINA  
KOVA шапка АРХИВ  
НА СТИМИСТА шал  
VINTAGE SALDARINI

## Misuzu Miyake

[www.art-dept.com](http://www.art-dept.com)



# Art Department



Misuzu Miyake

[www.art-dept.com](http://www.art-dept.com)



# Art Department



Misuzu Miyake

[www.art-dept.com](http://www.art-dept.com)

# Art Department



Misuzu Miyake

[www.art-dept.com](http://www.art-dept.com)



# Art Department



Misuzu Miyake

[www.art-dept.com](http://www.art-dept.com)

# Art Department



Misuzu Miyake

[www.art-dept.com](http://www.art-dept.com)



# Art Department



Misuzu Miyake

[www.art-dept.com](http://www.art-dept.com)

# Art Department



Misuzu Miyake

[www.art-dept.com](http://www.art-dept.com)



# Art Department



Misuzu Miyake

[www.art-dept.com](http://www.art-dept.com)



# Art Department



Misuzu Miyake

[www.art-dept.com](http://www.art-dept.com)



# Art Department



Misuzu Miyake

[www.art-dept.com](http://www.art-dept.com)

# Art Department



Misuzu Miyake

[www.art-dept.com](http://www.art-dept.com)



# Art Department



アンドロイドのように。  
2009年にランウェイデビューしたばかりなのに、中世的な魅力で、早くも存在感を発揮しているロシア人モデル、ラニヤ・モルダノヴァ。ファニーなショートヘアとイノセントフェイスに目玉を奪われる。とりわけ特徴的なのは、瞳の色以上に黒いブラックヘア。この無機質なヘアが、アンドロイドのような不思議なニュアンスを醸し出している。

Ranya X  
Short

個性を主張するなら、モードコンシャスなショートで！  
トランスジェンダーなファニー系から、キュート系、エッジ系までお手本は多数。あなたならどれを狙う？

Misuzu Miyake

[www.art-dept.com](http://www.art-dept.com)



# Art Department



Misuzu Miyake

[www.art-dept.com](http://www.art-dept.com)



# Art Department



Misuzu Miyake

[www.art-dept.com](http://www.art-dept.com)

# Art Department



Misuzu Miyake

[www.art-dept.com](http://www.art-dept.com)



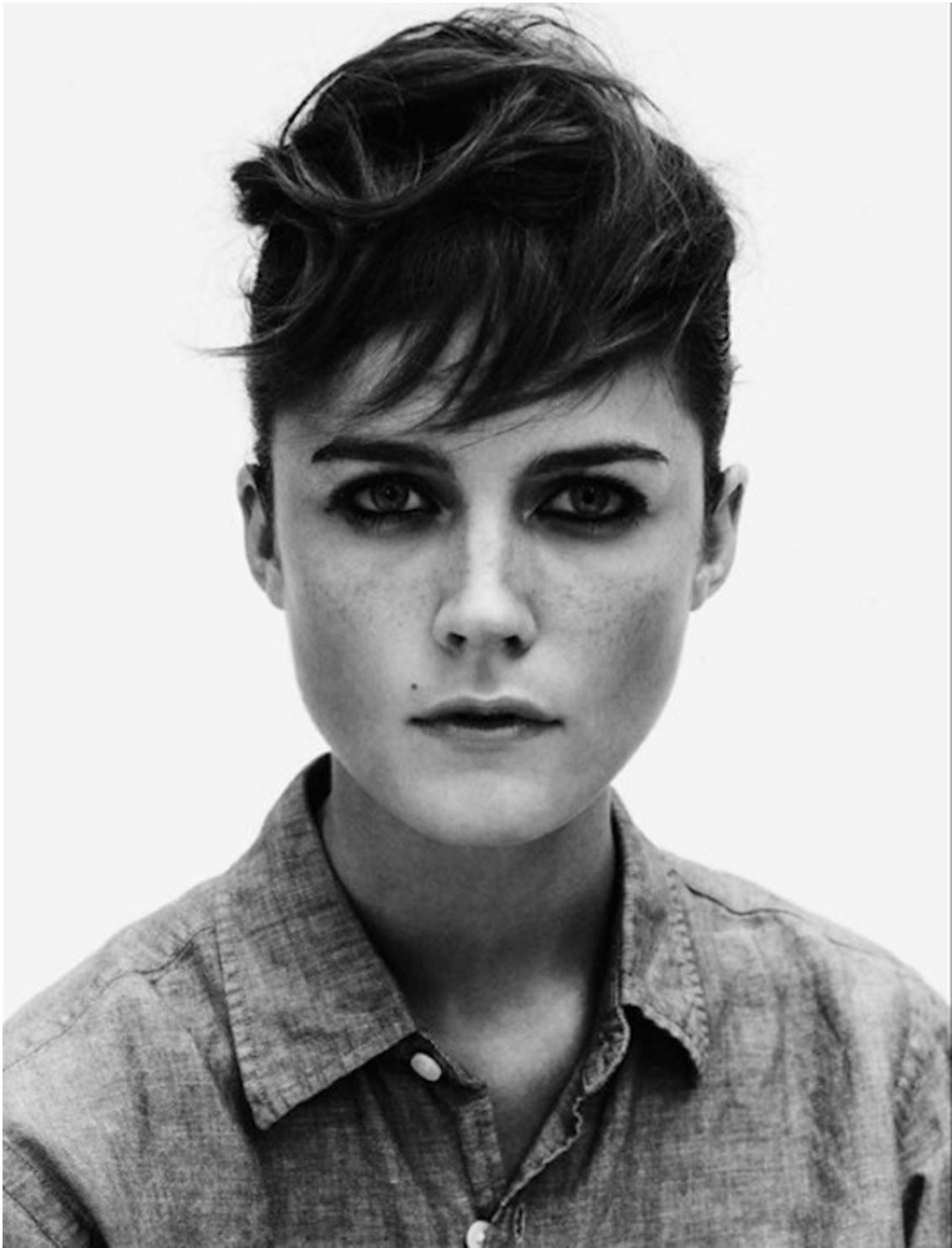
# Art Department



Misuzu Miyake

[www.art-dept.com](http://www.art-dept.com)

# Art Department



Misuzu Miyake

[www.art-dept.com](http://www.art-dept.com)



# Art Department



Misuzu Miyake

[www.art-dept.com](http://www.art-dept.com)

# Art Department



Misuzu Miyake

[www.art-dept.com](http://www.art-dept.com)