

Art Department



視覚
+ VISUAL TALES
物語

25

+
PARADISE
MODEL
ENZO BRUMM
IN
NIHL

PHOTOGRAPHED BY
LUKE
ABBY
+
FASHION BY
JOHN
TAN

FUTURISM

Hiro Yonemoto

www.art-dept.com

Art Department



Hiro Yonemoto

www.art-dept.com

Art Department



Hiro Yonemoto

www.art-dept.com

Art Department



Hiro Yonemoto

www.art-dept.com

Art Department



Hiro Yonemoto

www.art-dept.com

Art Department



Hiro Yonemoto

www.art-dept.com

Art Department



Hiro Yonemoto

www.art-dept.com

Art Department



Hiro Yonemoto

www.art-dept.com

Art Department



ESPECIAL SIAR:
MÉXICO AMA LA ALTA RELOJERÍA

— BVLGARI, EL ARTE DEL TIEMPO

Hiro Yonemoto

www.art-dept.com

Art Department



SACO DE SARGA Y CAMISA DE SEDA, DE FENDI
ANILLO B.ZERO1 XX ANIVERSARIO, RELOJ BVLGARI SOLOTEMPO DE BVLGARI

Hiro Yonemoto

www.art-dept.com

Art Department



SACO DE LANA, PANTALONES, DE PRADA. CAMISA DE ALGODÓN, DE SALVATORE FERRAGAMO
RELOJ OCTO FINISSIMO SKELETON DE BVLGARI

Hiro Yonemoto

www.art-dept.com

Art Department



PÁGINA ANTERIOR:
RELOJ OCTO LÓRIGINALE CON CRONÓGRAFO DE BVLGARI
EN ESTA PÁGINA:
RELOJ OCTO FINISSIMO CHRONO GMT, ANILLO B.ZERO1 DE BVLGARI

CREADO POR NICOLA BVLGARI A RAÍZ DE SU PASIÓN POR LOS AUTOS VINTAGE, EL NB CENTER FOR AMERICAN AUTOMOTIVE HERITAGE, UBICADO EN PENNSYLVANIA Y ESCENARIO DE ESTA PRODUCCIÓN, ES UNA INSTITUCIÓN DEDICADA A PRESERVAR LA HERENCIA AUTOMOTRIZ DE ESTADOS UNIDOS, QUE SALVA, PRESERVA Y RESTAURA AUTOS FABRICADOS ENTRE LAS DÉCADAS DE LOS AÑOS 20 Y 50.

Hiro Yonemoto

www.art-dept.com

Art Department



Hiro Yonemoto

www.art-dept.com

Art Department



Hiro Yonemoto

www.art-dept.com

Art Department



Hiro Yonemoto

www.art-dept.com

Art Department



Hiro Yonemoto

www.art-dept.com

Art Department



Hiro Yonemoto

www.art-dept.com

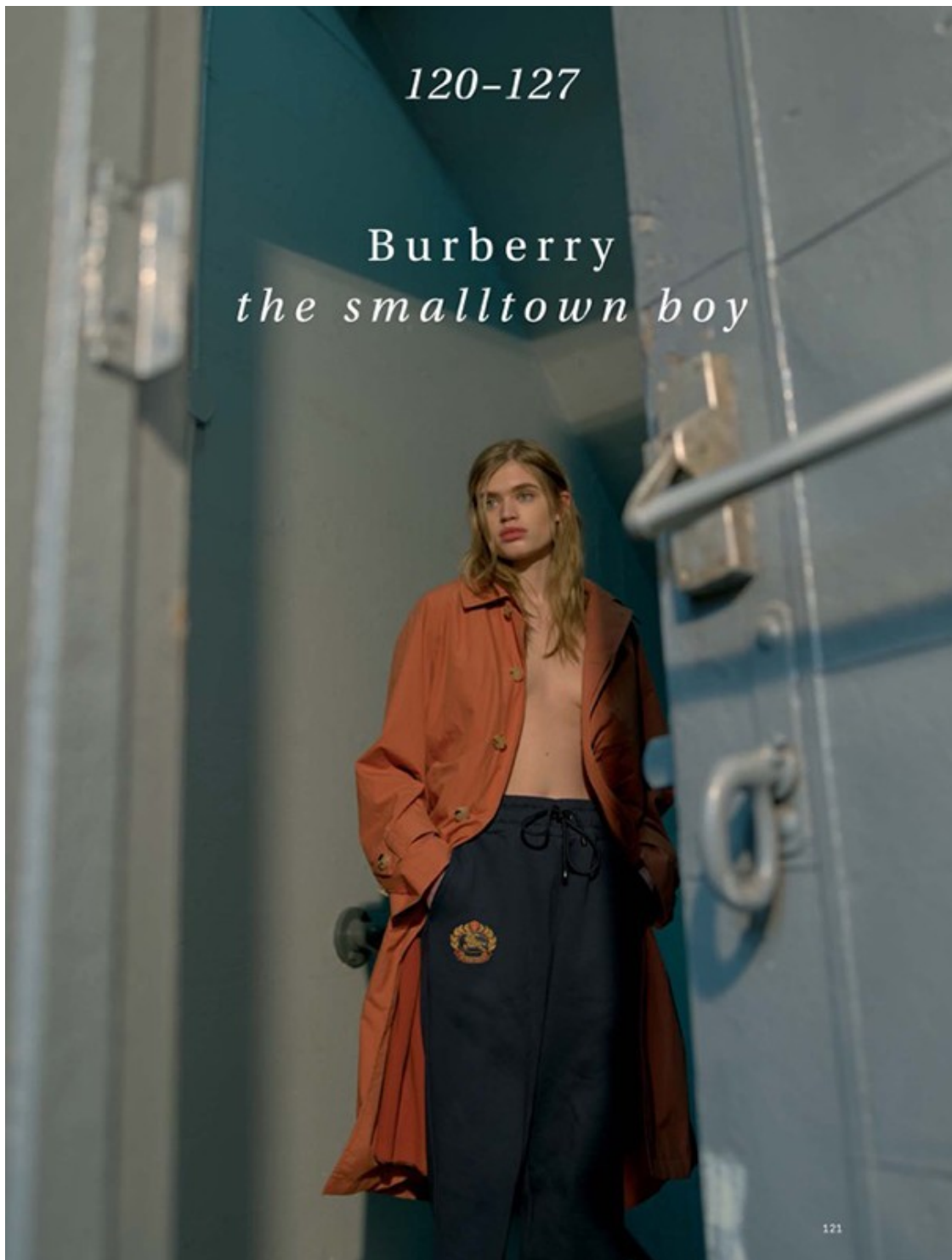
Art Department



Hiro Yonemoto

www.art-dept.com

Art Department



Hiro Yonemoto

www.art-dept.com

Art Department



Hiro Yonemoto

www.art-dept.com

Art Department



Hiro Yonemoto

www.art-dept.com

Art Department



Hiro Yonemoto

www.art-dept.com

Art Department



Hiro Yonemoto

www.art-dept.com

Art Department



Hiro Yonemoto

www.art-dept.com

Art Department



Hiro Yonemoto

www.art-dept.com

Art Department



Hiro Yonemoto

www.art-dept.com

Art Department



Hiro Yonemoto

www.art-dept.com

Art Department



Hiro Yonemoto

www.art-dept.com

Art Department



Hiro Yonemoto

www.art-dept.com

Art Department



Hiro Yonemoto

www.art-dept.com

Art Department



Hiro Yonemoto

www.art-dept.com

Art Department



Hiro Yonemoto

www.art-dept.com

Art Department



Hiro Yonemoto

www.art-dept.com

Art Department

Fashion. Beauty. Business.

WWD

SEPT. 10/17

DKNY'S NEW DAY
Designers Dao-Yi Chow and Maxwell Osborne get ready for their big time commercial debut.
Fashion p. 19

VISIONS OF MADONNA
Exclusive sketches from Gucci, Prada, Jeremy Scott and more for the diva's "Rebel Heart" tour.
Features p. 72

NEW YORK VS. L.A.
In the eternal quest for all things cool and chic, which town wins? A city smackdown.
Eye p. 62

Mr. Normal
Thom Browne is well mannered, goes running every day and graduated from Notre Dame. And his shows are among the weirdest, most provocative and beautiful in fashion.

48493 20000 3 23143

US	\$198	JAPAN	¥1000
CANADA	\$113	CHINA	¥190
UK	£18	HONG KONG	HK\$100
EUROPE	€11	INDIA	₹600



Hiro Yonemoto

www.art-dept.com

Art Department



Hiro Yonemoto

www.art-dept.com

Art Department



Hiro Yonemoto

www.art-dept.com

Art Department



Hiro Yonemoto

www.art-dept.com

Art Department



Hiro Yonemoto

www.art-dept.com

Art Department



Hiro Yonemoto

www.art-dept.com

Art Department



Tailored blazer, \$295,
sunglasses, \$120.

Hiro Yonemoto

www.art-dept.com

Art Department



Hiro Yonemoto

www.art-dept.com

Art Department



Tailored blazer, \$350,
Tommy jeans flag shirt,
\$49.50.

Hiro Yonemoto

www.art-dept.com

Art Department



Styling by
**Matthew
Marden**

Jacket (\$4,995),
shirt (\$450), trousers
(\$695), and tie (\$235)
by Ralph Lauren.

**FOR ALL PEOPLE TALK ABOUT EUROPEAN FASHION, IT'S THE
AMERICANS WHO HAVE SET THE TONE OF MODERN MEN'S WEAR: COOL,
CASUAL, AND ALWAYS REBELLIOUS.
SO TO SURVEY THE CURRENT STATE OF STYLE, WE GATHERED LOOKS
FROM OUR FAVORITE U.S. DESIGNERS
(AND ONE EXPAT BRIT). TURNS OUT AMERICAN GUYS DON'T HAVE
TO LOOK FAR TO LOOK GREAT.**

Photographs
BY
**TONY
KIM**

Dec + Jan 2018_Esquire 119

Hiro Yonemoto

www.art-dept.com

Art Department



Hiro Yonemoto

www.art-dept.com

Art Department



Halloween,
2011—Varvatos
(apparently a
Gene Simmons
fan) pays tribute
to Kiss.

Hiro Yonemoto

www.art-dept.com

Art Department



Hiro Yonemoto

www.art-dept.com

Art Department



Hiro Yonemoto

www.art-dept.com

Art Department



Hiro Yonemoto

www.art-dept.com

Art Department



Hiro Yonemoto

www.art-dept.com

Art Department



Hiro Yonemoto

www.art-dept.com

Art Department



Hiro Yonemoto

www.art-dept.com

Art Department



Hiro Yonemoto

www.art-dept.com

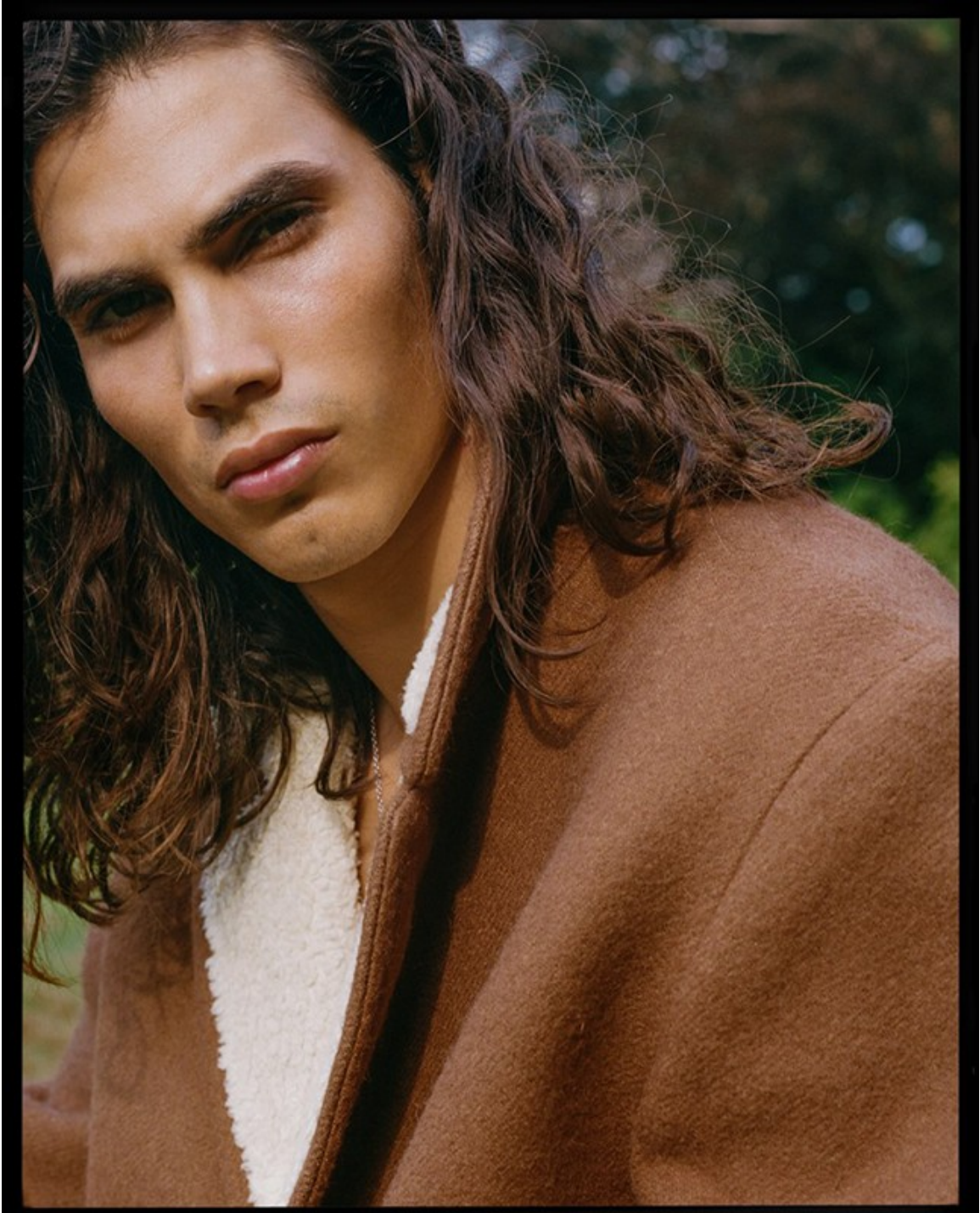
Art Department



Hiro Yonemoto

www.art-dept.com

Art Department



Hiro Yonemoto

www.art-dept.com

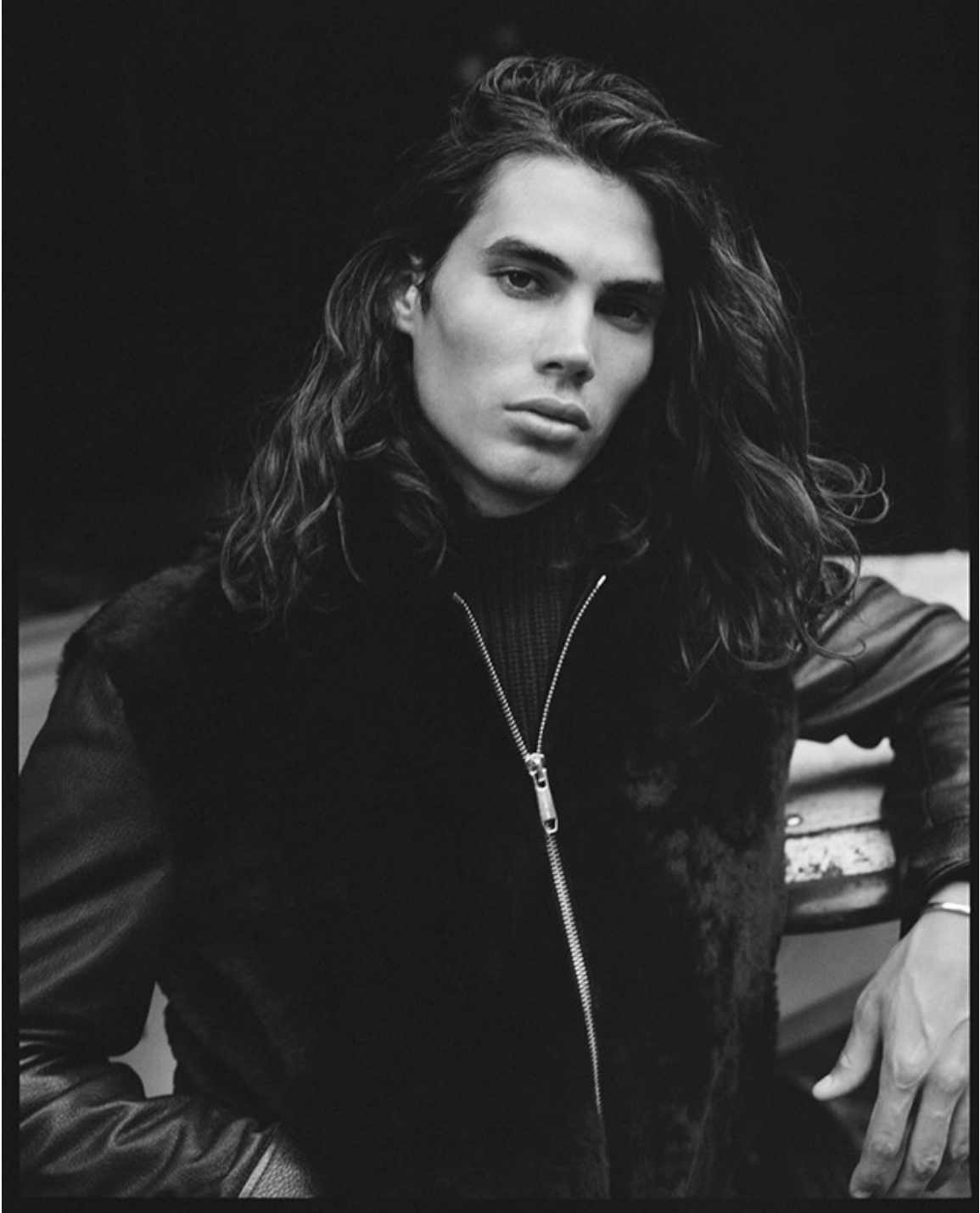
Art Department



Hiro Yonemoto

www.art-dept.com

Art Department



Hiro Yonemoto

www.art-dept.com

Art Department

ESSENTIAL HOMME



VICKTOR TAIWÒ

Admittedly, music is self-indulgent for Vicktor Taiwò, the young, soft-spoken Londoner via Nigeria whose debut EP, "Juno," dropped earlier this summer. "It's dangerous for your self-expression to also be what makes you money," he says, "but it's something I can't help but do. It keeps me sane." With a rich voice, Taiwò pilots a new plane of Neo Soul, querying questions of love and smooth remorse over electronic lullabies that soften and soothe. Catch him on tour with twin sisters Lisa-Kaindé and Naomi Diaz of Ibeyi this fall.

80

Hiro Yonemoto

www.art-dept.com

Art Department



THIS PAGE: Black silk lamé shirt, \$550, **LANVIN**. Available at LANVIN, NYC. Wool pants, \$695, **EMPORIO ARMANI**. Available at Emporio Armani boutiques nationwide. Leather strap boot, \$135, **CALVIN KLEIN JEANS**. CalvinKlein.com.

OPPOSITE PAGE: Charcoal heather bonded wool multi pocket bomber, \$1,995, **CALVIN KLEIN COLLECTION**. Available at Calvin Klein Collection, NYC and CalvinKlein.com. Crewneck short sleeve tee, \$200, **T BY ALEXANDER WANG**. AlexanderWang.com. \$620 super slim jeans, \$180, **G-STAR**. G-Star.com.

Hiro Yonemoto

www.art-dept.com

Art Department

ESSENTIAL HOMME



LE1F

"I've always been loud and annoying," says Khalif Diouf, known on stage as simply Lel1f. "I still am. I don't care who you are or what position you have, I'm still going to tell you my opinion." In that scorch of combative blaze, the underground rapper readily ignites his debut studio label, "Riot Boi," for XL this October. An in-your-face evolution from online mixtapes and greasy underground dives, the album amplifies Lel1f's symbiotic relationship with performance, further withering away at the wall between his art and his audience.

78

Hiro Yonemoto

www.art-dept.com

Art Department



THIS PAGE: Memeno surplus top,
\$840, tootrade shirt, \$370,
HOOD BY AIR, HoodByAir.com.
Freedom snap pant, \$1,010,
HOOD BY AIR, Barneys.com.
Artist's own necklace.
OPPOSITE PAGE: Velcro zip denim
jacket, \$1,380, AF1 jean, \$1,250,
HOOD BY AIR, HoodByAir.com.
Artist's own necklace.

Hiro Yonemoto

www.art-dept.com

Art Department



Hiro Yonemoto

www.art-dept.com

Art Department



Hiro Yonemoto

www.art-dept.com

Art Department



Hiro Yonemoto

www.art-dept.com

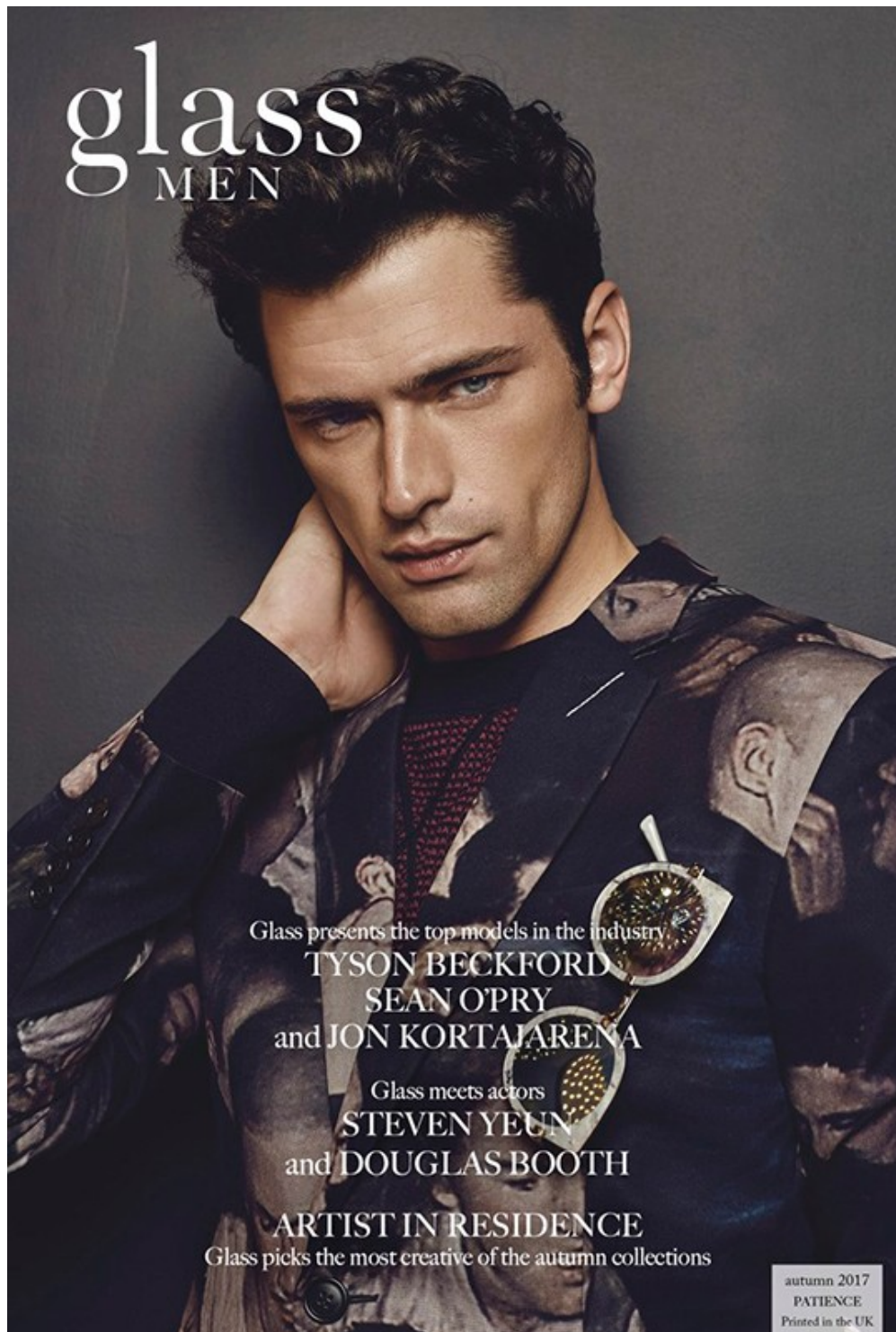
Art Department



Hiro Yonemoto

www.art-dept.com

Art Department



Hiro Yonemoto

www.art-dept.com

Art Department



Hiro Yonemoto

www.art-dept.com

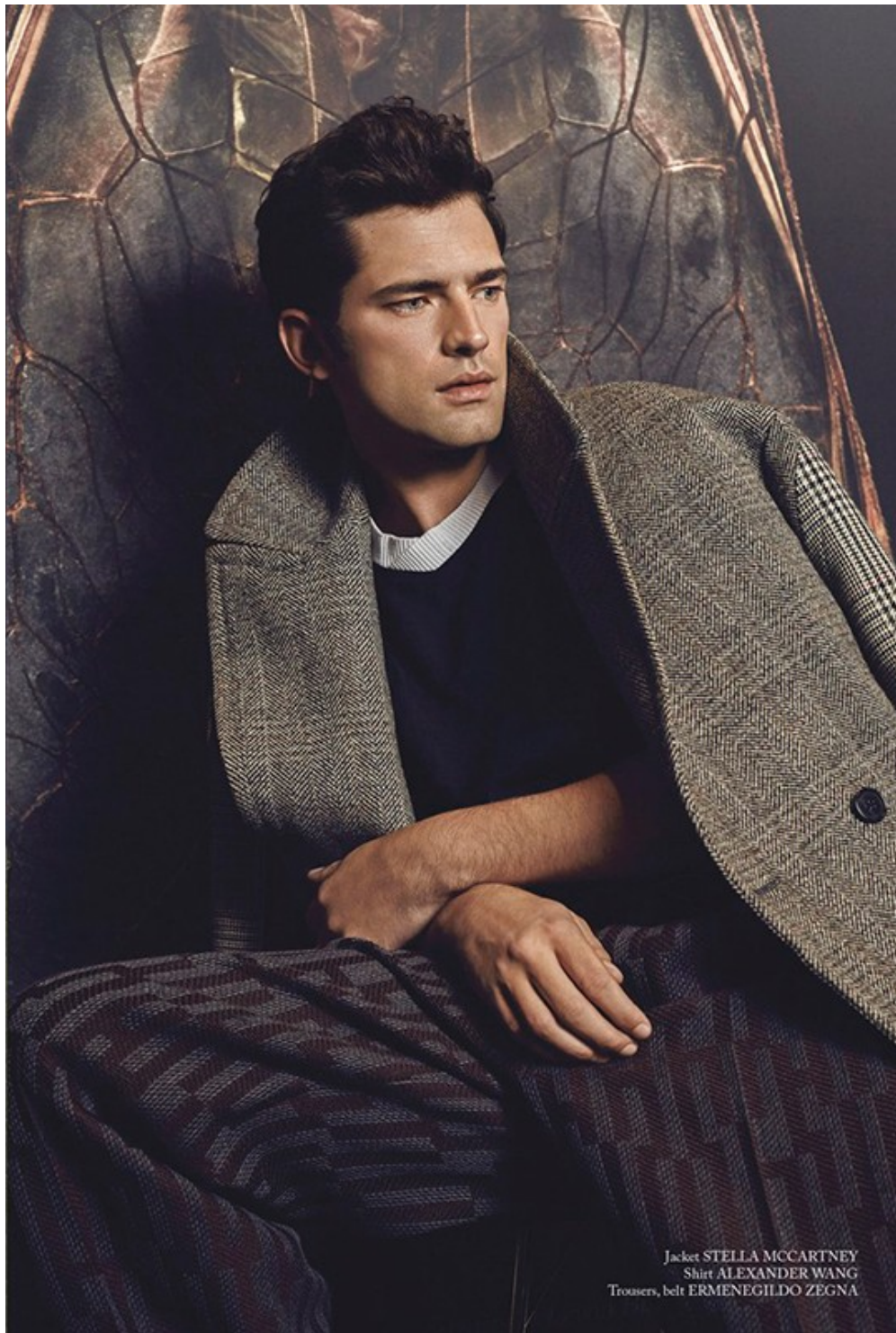
Art Department



Hiro Yonemoto

www.art-dept.com

Art Department



Hiro Yonemoto

www.art-dept.com

Art Department



Lucky Charm

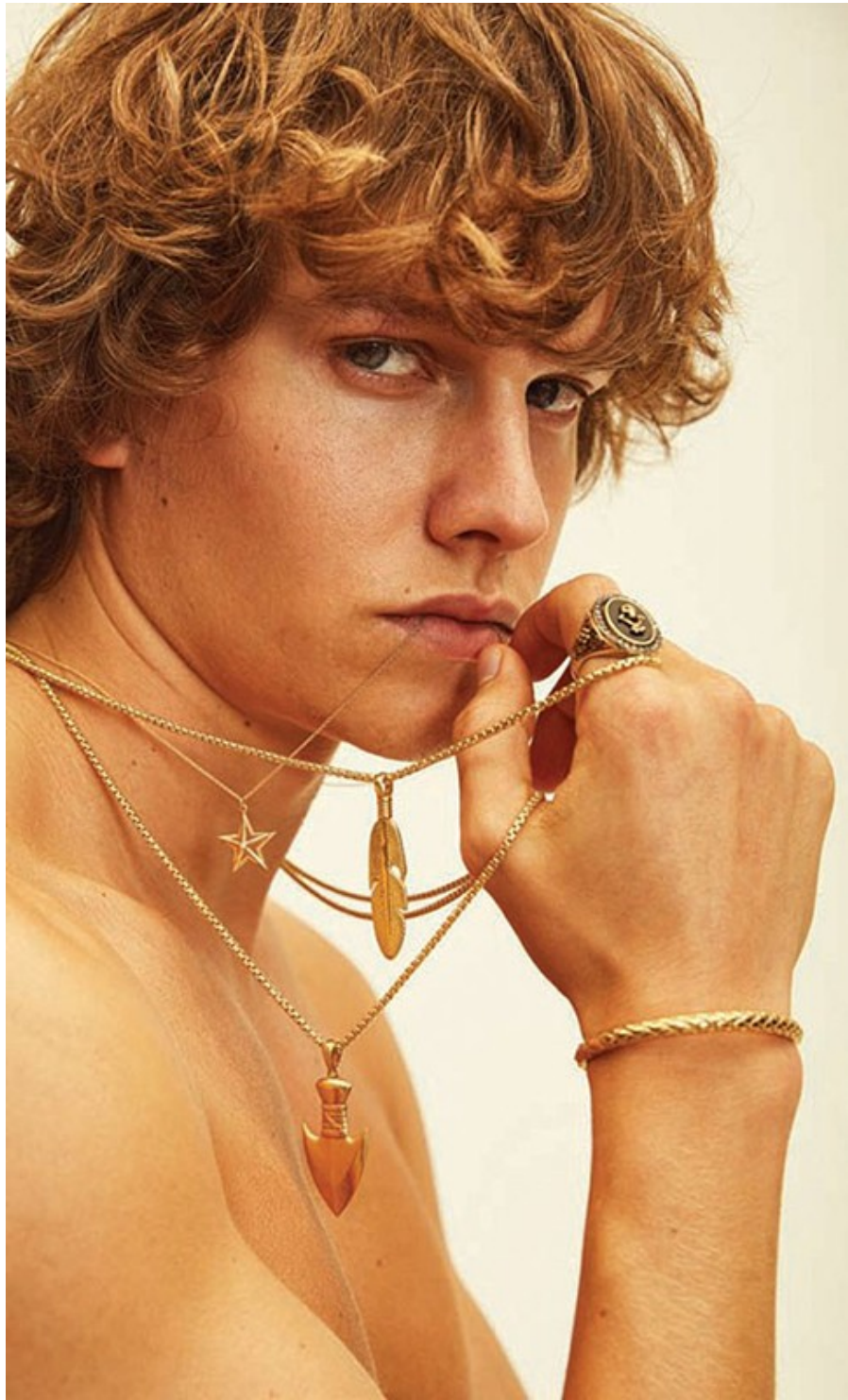
Embellished pendants on necklaces, cuff bracelets and statement rings are growing trends in men's jewelry.

By ALEX BADIA

Hiro Yonemoto

www.art-dept.com

Art Department



Hiro Yonemoto

www.art-dept.com

Art Department



OLE SCHEEREN BÜRO OLE SCHEEREN

Working in Asia, "you become a scale junkie," says Scheeren, whose latest projects range from a large 600,000-square-foot complex to an even larger 2 million-square-foot mixed-use building. That's still small compared to the 5 million-square-foot headquarters of China Central Television, a two-legged glass tower that cantilevers over Beijing. When OMA (where Scheeren worked from 1995 to 2010) won the competition to design CCTV, the German-born architect opened an office in Beijing to oversee construction. "I didn't want to be imposing Western architecture on Asia, like some sort of colonial export," says Scheeren, 43, during lunch at Manhattan's Mercer Hotel. (He was also in a relationship with Chinese movie star Maggie Cheung.) In 2010, Scheeren created his own firm, Büro Ole Scheeren, in Beijing and Hong Kong. His projects have included a tower in Bangkok with pixelated indentations that make the building look like it is crumbling. "You really have to understand the psychology of the place," he says. "It wouldn't work anywhere else."

Scheeren wears a Prada suit and shirt.

89

Hiro Yonemoto

www.art-dept.com

Art Department



Hiro Yonemoto

www.art-dept.com

Art Department



FERNANDO ROMERO

FR-EE

When discussing Romero, it's difficult to avoid mentioning that his father-in-law, telecommunications tycoon Carlos Slim Helú, is one of the richest men in the world, or that the architect hosted a book party for his monograph, *You Are the Context*, at New York's Guggenheim Museum, attended by *la crème* of Mexican society. Romero, 42, is a soft-spoken father of four who spent three years at OMA before founding FR-EE (Fernando Romero Enterprise)—and his appeal as a designer goes beyond family ties. He commutes between the firm's two offices, in Mexico City (home to his wife and children) and Manhattan (where his office overlooks the High Line). His best-known project to date is Mexico's glittering, cinch-waist Museo Soumaya, named for his late mother-in-law. He's now at work on two more museums in Mexico and a number of office buildings. Romero likes to pay it forward: He sponsors a year-long travel fellowship for a young Mexican architect with a focus on affordable housing and oversees an archive of Mexican design, which he plans to turn into that country's first design museum.

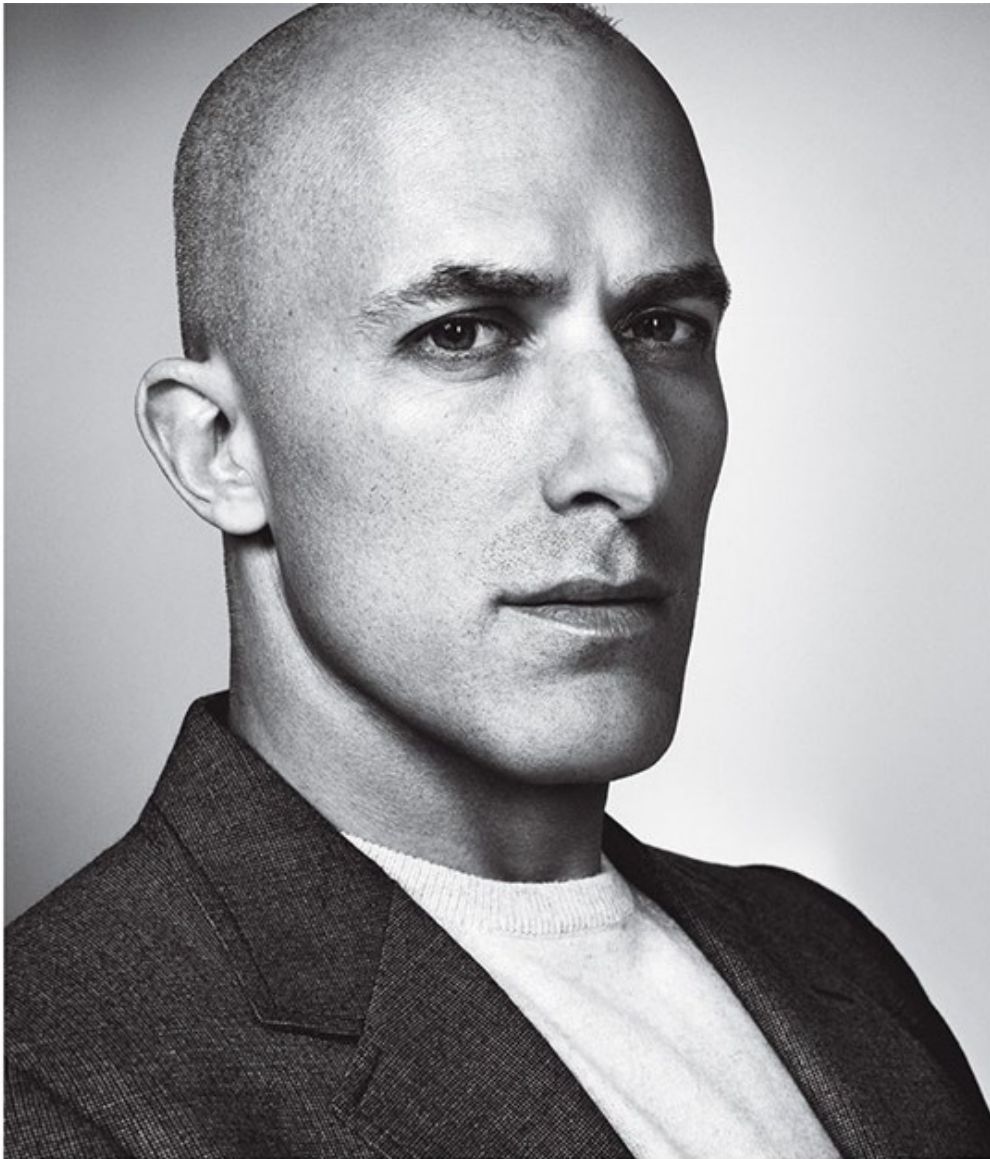
Romero wears a Dior Homme jacket, pants and shirt, his own Rolex watch and Prada shoes.

90

Hiro Yonemoto

www.art-dept.com

Art Department



JOSHUA PRINCE-RAMUS

REX

For a time, Prince-Ramus was, as even his name seems to suggest, an OMA heir apparent. The founding partner of the firm's New York office, he was hard to ignore. A Yale philosophy major and rower with a tattooed arm and ice-blue eyes, he helped OMA land one of its most important projects: the Seattle Central Library, completed to acclaim in 2004. Prince-Ramus was only 29 when he dove into "the deep end," as partner in charge of the project—a Seattle native, he had heard about it from his mother and flew home from Rotterdam the next morning to successfully complete it. In 2006, he dove in even deeper, buying out Koolhaas's portion of the New York office and turning it into a separate firm called REX. REX designed the Wyly Theatre in Dallas, which opened in 2009. The next year, Prince-Ramus completed the Vakko Fashion Center, an innovative headquarters for a clothing company in Istanbul, built over an abandoned concrete frame. These days, projects like a tower in Kuala Lumpur, a museum in Germany and a house for a billionaire in New York City keep Prince-Ramus, 44, and his Brooklyn office humming.

Prince-Ramus wears a Lanvin blazer and sweater.

Hiro Yonemoto

www.art-dept.com

Art Department



MATTHIAS HOLLWICH

HWKN

With Marc Kushner, his partner in the Manhattan firm HWKN, Hollwich is committed to creating "socially charged architecture." Being gay is helpful, he says, in that it gives him an outsider's perspective on design. In 2011, the Pavillon, a legendary discotheque in Fire Island Pines, was destroyed by fire. HWKN designed its replacement, with wooden trusses that appear to strut—giving the resort town a potent architectural symbol. The firm's other projects range in size from residential interiors and a restaurant prototype to a 2.2 million-square-foot mixed-use development in New Jersey that's expected to include that state's tallest building. Hollwich spent six years at OMA before he moved to New York in 2006. After renting a rare Bauhaus-style apartment in Midtown, he recently moved to a new high-rise in order to learn about the building type from the inside, like an architect's version of method acting. Hollwich, 42, continues the OMA tradition of open-ended inquiry while teaching at the University of Pennsylvania, where he leads a seminar on architecture for the aging.

Hollwich wears a Boss jacket, Maison Martin Margiela sweater, John Varvatos jeans and Acne Studios oxfords.

93

Hiro Yonemoto

www.art-dept.com

Art Department

BJARKE INGELS

BIG

Danish-born *enfant terrible* Ingels spent just two years at OMA (1998-2000) before founding his own firm, PLOT, with fellow alumnus Julien De Smedt. Six years later, he founded Bjarke Ingels Group (BIG) and began attracting serious attention as much for his provocative wordplay as for his architecture. (He called his design philosophy BIGamy—the rejection of “conceptual monogamy.”)

He competed against Koolhaas for the chance to develop the 52-acre Miami Beach Convention Center site, a competition he described as “oedipal.” OMA won that round. But Ingels, 39, who divides his time between New York and Copenhagen—bicycling in both cities—has plenty to keep him busy, including a nearly full-block residential development on Manhattan’s West 57th Street and another apartment building in Harlem; a viewing platform that will become a major feature of the already architecture-rich Brooklyn Bridge Park; condo developments in Miami and Fort Lauderdale; another residential tower in Vancouver; and museums in Park City, Utah, and Copenhagen. A self-promoter with a soft touch, Ingels represented Denmark with a bicycle-ramp pavilion at the Shanghai World Expo in 2010, on which he collaborated with the dissident Chinese artist Ai Weiwei.

Ingels wears a Acne Studios blazer, Giorgio Armani shirt, Jean Shop jeans and Acne Studios oxfords.



TILLER, KIM; CHANG, GIOVONNA; HIRO

Hiro Yonemoto

www.art-dept.com

Art Department



Hiro Yonemoto

www.art-dept.com

Art Department



Hiro Yonemoto

www.art-dept.com

Art Department



Hiro Yonemoto

www.art-dept.com

Art Department



ART DEPT

Photographer: Kristiina Wilson
Styling|Casting:
John Tan for Visual Tales
Grooming:
Hiro Yonemoto|Atelier Management
Assistant to photographer:
Logan Jackson

Model:
Matthew Jackman|Aim Model Management

Special thanks to:
Kristiina Wilson for her creative
contribution & generous support
Nole Marin|Wil Hill
at Aim Model Management
Mimi Glaser|Atelier Management

Daphne Seybold|Cia Kuan
at Comme des Garçons
David Royal at Spot 6 Management



Hiro Yonemoto

www.art-dept.com

Art Department



Hiro Yonemoto

www.art-dept.com

Art Department



Hiro Yonemoto

www.art-dept.com

Art Department



Hiro Yonemoto

www.art-dept.com

Art Department



SUNNY DAYS

WE'VE SEEN THE FUTURE AND, REFRACTED THROUGH THE LENSES OF THESE GLIMMERING GLASSES, IT'S QUITE BRIGHT.

HOW TO WEAR

Don mirrored sunglasses over any style for a cosmopolitan enhancement with a hint of illusion.

Justice round tortoise frames with yellow mirror lens, \$495, **BARTON PERREIRA**. Available at Bergdorf Goodman. Midnight navy two-button notch lapel wool jacket with camo lining, \$2,400, camo cotton shirt with blue rose embroidery, \$1,700, **DIOR HOMME**.

PHOTOGRAPH BY A.P. KIM STYLED BY TERRI LU GROOMING BY HIRO YONEMOTO AT ATELIER MANAGEMENT USING ORBIS HAIRCARE. ASSOCIATE MARKET EDITOR ELLIE ROGERS. PHOTO ASSISTANT ADAM NIMBLEY.

Hiro Yonemoto

www.art-dept.com

Art Department



Hiro Yonemoto

www.art-dept.com

Art Department

M Agenda

EDITED BY JEAN E. PALMERI and ALEX BADIA

Runway suits are being updated for spring with a rainbow of colors, from pastel shades to jewel tones, turning the men's wear staple into the ultimate attention-grabber. Here, some of the faces of DNA Model Management show this season's color range. *by ALEX BADIA*



True Colors

FROM LEFT: Nick wears Berluti's suit and Sunspel's T-shirt, both in cotton, Salvatore Ferragamo sandals. Kellen wears Eral's silk suit and Burberry Prorsum's cotton tank top, Francesco Russo pumps. Max wears Casey Hayford's cotton suit, Gucci sandals. Ted wears Bottega Veneta's wool suit and silk shirt, Giuseppe Zanotti sandals. Christian wears Boglietti's wool blazer, American Apparel's cotton T-shirt and Ralph Lauren Purple Label's silk gabardine pants, Bally sandals. Nick wears Tommy Hilgert's cotton and spandex suit and Oliver Spencer's cotton T-shirt, Corneliani scarf, Salvatore Ferragamo sandals. Christian wears Paul Smith's wool suit and American Apparel's cotton T-shirt, Bally sandals. Phillip wears Ralph Lauren Purple Label's silk gabardine blazer, Burberry Prorsum's cotton tank top and Ami's cotton pants, Giuseppe Zanotti sandals. Kellen wears Hugo's lycell and polyester suit and Bottega Veneta's cashmere sweater, Francesco Russo pumps. Max wears Berluti's suit and Dries Van Noten's tank top, both in cotton, Gucci sandals.

Photographs by JACOB & CARROL. Photographer's Assistant: ISAN MONFORT. Models: NICK REA, PHILIPP SCHMIDT, TED LE SUEUR, MAX SCHLESINGER, CHRISTIAN ZELLERMAYER and KELIN DILLON at DNA Models. Fashion Assistants: LUIS CAMPUZANO and KAYANA CORDWELL. Hair by RIAD AZAR at Atelier Management. Makeup by HIRO YONEMOTO at Atelier Management.

Hiro Yonemoto

www.art-dept.com

Art Department



Hiro Yonemoto

www.art-dept.com

Art Department



Hiro Yonemoto

www.art-dept.com

Art Department



Hiro Yonemoto

www.art-dept.com

Art Department



ALEXANDER WEARS
LEATHER WHITE COAT PRADA, T-SHIRT
RALPH LAUREN AND GLASSES MOSCOT

HAIR DENNIS FEI
MAKEUP HIROSHI YONEMOTO
MODEL ALEXANDER JOHANSSON @ NEW
YORK MODELS MANAGEMENT

Hiro Yonemoto

www.art-dept.com

Art Department



Hiro Yonemoto

www.art-dept.com

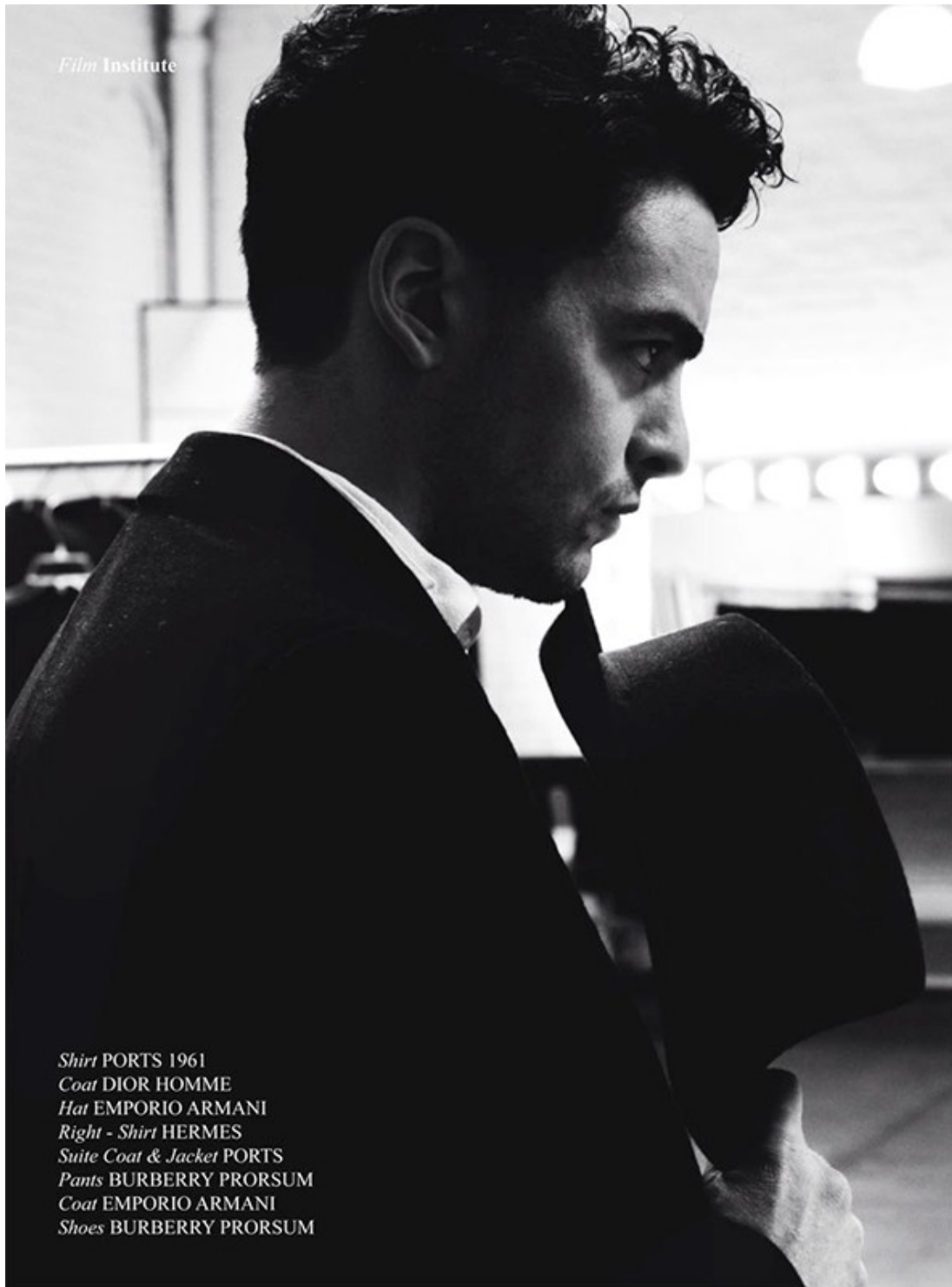
Art Department



Hiro Yonemoto

www.art-dept.com

Art Department

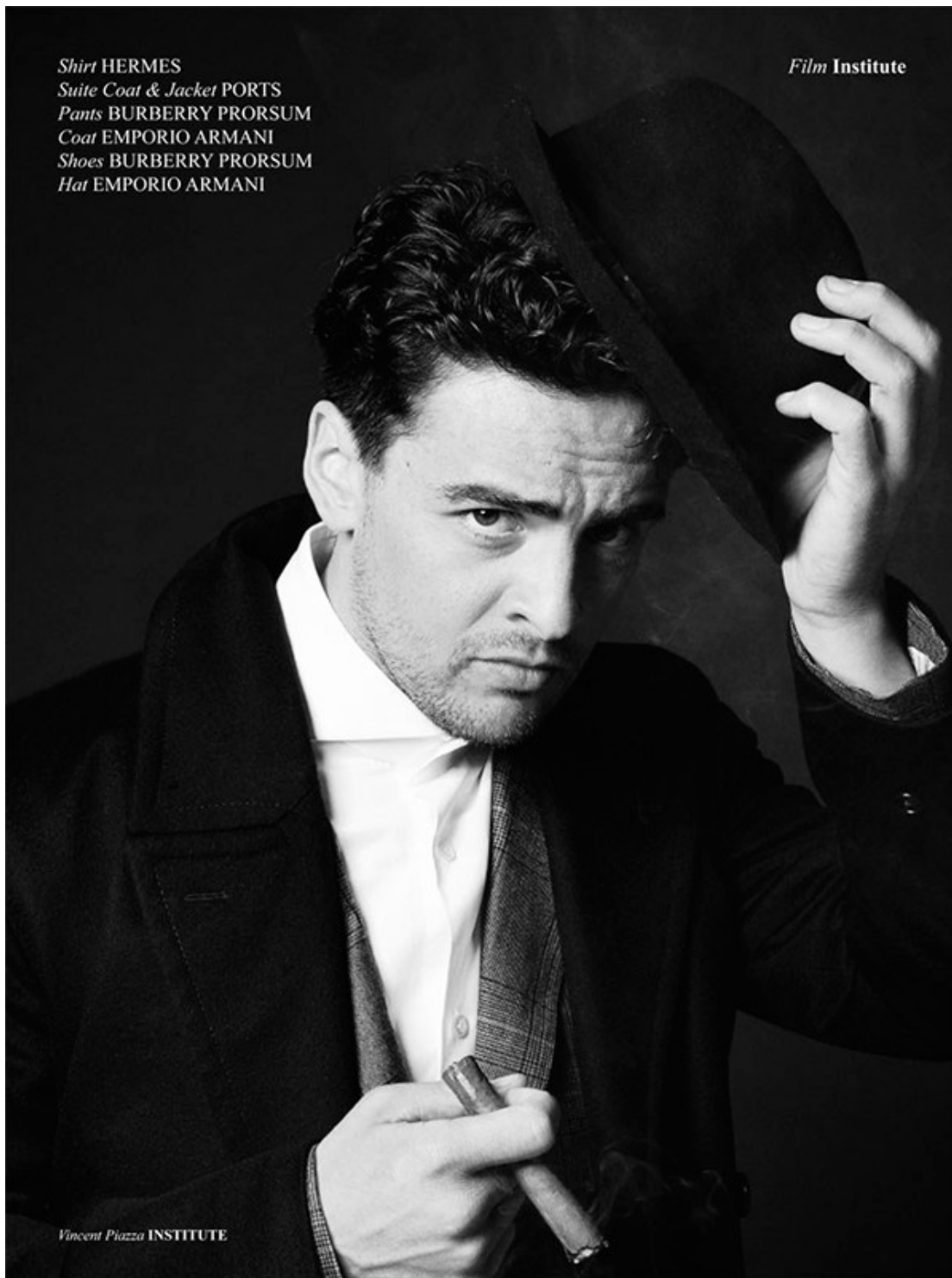


Shirt PORTS 1961
Coat DIOR HOMME
Hat EMPORIO ARMANI
Right - Shirt HERMES
Suite Coat & Jacket PORTS
Pants BURBERRY PRORSUM
Coat EMPORIO ARMANI
Shoes BURBERRY PRORSUM

Hiro Yonemoto

www.art-dept.com

Art Department



Hiro Yonemoto

www.art-dept.com

Art Department



Hiro Yonemoto

www.art-dept.com

Art Department



Hiro Yonemoto

www.art-dept.com

Art Department



Blazer, shirt, waistcoat, trousers, shoes, ascot and pen, all by Prada



Hiro Yonemoto

www.art-dept.com

Art Department



Hiro Yonemoto

www.art-dept.com

Art Department



Hiro Yonemoto

www.art-dept.com

Art Department



Hiro Yonemoto

www.art-dept.com

Art Department



Hiro Yonemoto

www.art-dept.com

Art Department



Hiro Yonemoto

www.art-dept.com

Art Department



Hiro Yonemoto

www.art-dept.com

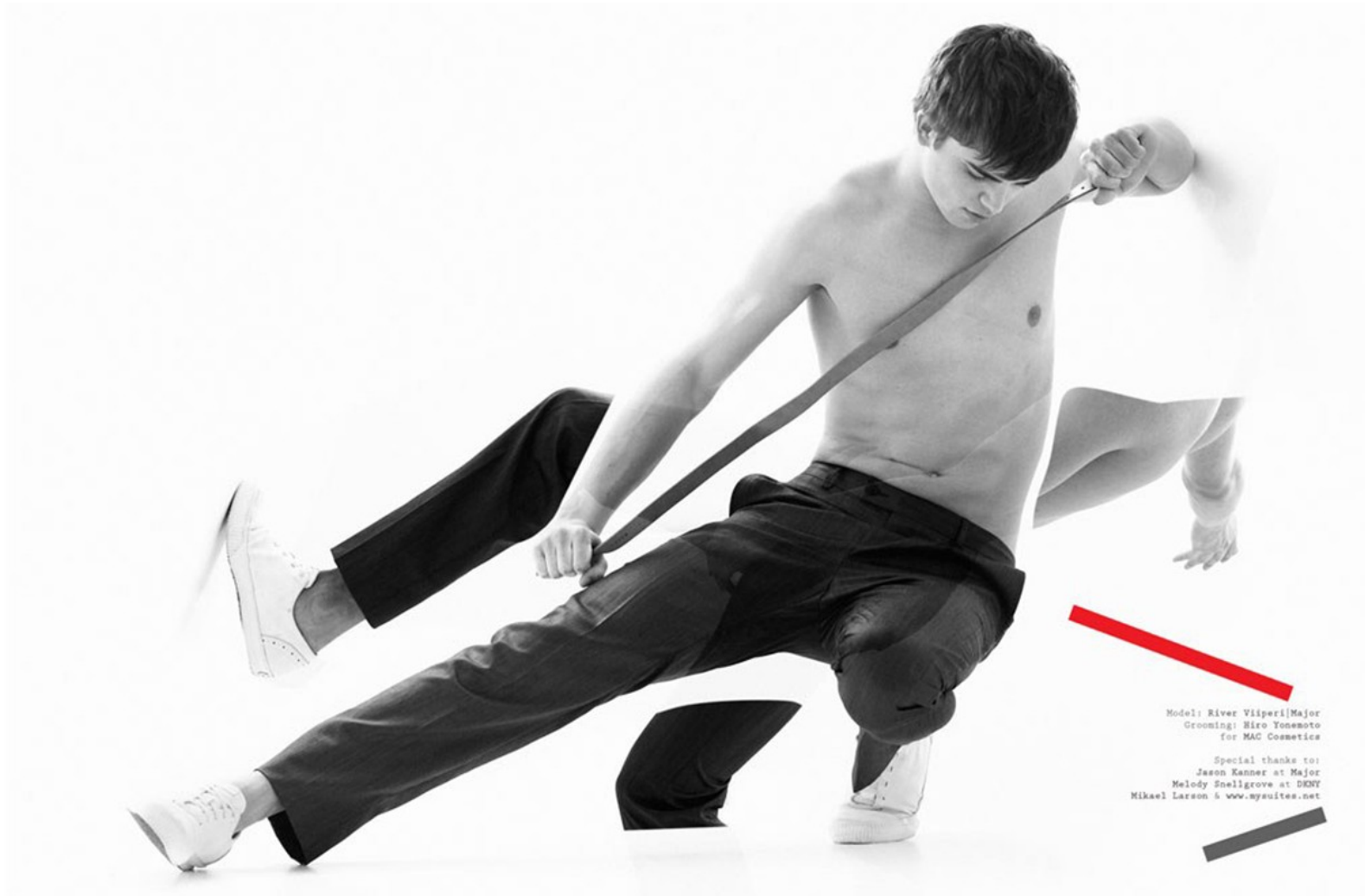
Art Department



Hiro Yonemoto

www.art-dept.com

Art Department



Model: River Viperi/Major
Grooming: Hiro Yonemoto
for MAC Cosmetics

Special thanks to:
Jason Kanner at Major
Melody Snellgrove at DENY
Mikael Larson & www.mysuites.net

Hiro Yonemoto

www.art-dept.com

Art Department



Hiro Yonemoto

www.art-dept.com

Art Department



Hiro Yonemoto

www.art-dept.com