

# Art Department



Joseph Episcopo

[www.art-dept.com](http://www.art-dept.com)

# Art Department



Joseph Episcopo

[www.art-dept.com](http://www.art-dept.com)



# Art Department



Joseph Episcopo

[www.art-dept.com](http://www.art-dept.com)

# Art Department



Joseph Episcopo

[www.art-dept.com](http://www.art-dept.com)



# Art Department



Joseph Episcopo

[www.art-dept.com](http://www.art-dept.com)



# Art Department



Joseph Episcopo

[www.art-dept.com](http://www.art-dept.com)



# Art Department



Joseph Episcopo

[www.art-dept.com](http://www.art-dept.com)



# Art Department



Joseph Episcopo

[www.art-dept.com](http://www.art-dept.com)



# Art Department



Joseph Episcopo

[www.art-dept.com](http://www.art-dept.com)



# Art Department



Joseph Episcopo

[www.art-dept.com](http://www.art-dept.com)



# Art Department



Joseph Episcopo

[www.art-dept.com](http://www.art-dept.com)

# Art Department



Joseph Episcopo

[www.art-dept.com](http://www.art-dept.com)



# Art Department



Joseph Episcopo

[www.art-dept.com](http://www.art-dept.com)

# Art Department



Joseph Episcopo

[www.art-dept.com](http://www.art-dept.com)



# Art Department



Joseph Episcopo

[www.art-dept.com](http://www.art-dept.com)

# Art Department



Joseph Episcopo

[www.art-dept.com](http://www.art-dept.com)



# Art Department



Joseph Episcopo

[www.art-dept.com](http://www.art-dept.com)



# Art Department



Joseph Episcopo

[www.art-dept.com](http://www.art-dept.com)



# Art Department



Joseph Episcopo

[www.art-dept.com](http://www.art-dept.com)



# Art Department



Joseph Episcopo

[www.art-dept.com](http://www.art-dept.com)



# Art Department



Joseph Episcopo

[www.art-dept.com](http://www.art-dept.com)



# Art Department



Joseph Episcopo

[www.art-dept.com](http://www.art-dept.com)



# Art Department



Joseph Episcopo

[www.art-dept.com](http://www.art-dept.com)

# Art Department



Joseph Episcopo

[www.art-dept.com](http://www.art-dept.com)



# Art Department



Joseph Episcopo

[www.art-dept.com](http://www.art-dept.com)

# Art Department



Joseph Episcopo

[www.art-dept.com](http://www.art-dept.com)



# Art Department



Joseph Episcopo

[www.art-dept.com](http://www.art-dept.com)

# Art Department



Joseph Episcopo

[www.art-dept.com](http://www.art-dept.com)



# Art Department



Joseph Episcopo

[www.art-dept.com](http://www.art-dept.com)



# Art Department



Joseph Episcopo

[www.art-dept.com](http://www.art-dept.com)



# Art Department



Joseph Episcopo

[www.art-dept.com](http://www.art-dept.com)

# Art Department



Joseph Episcopo

[www.art-dept.com](http://www.art-dept.com)



# Art Department



Joseph Episcopo

[www.art-dept.com](http://www.art-dept.com)

# Art Department



Joseph Episcopo

[www.art-dept.com](http://www.art-dept.com)



# Art Department



Joseph Episcopo

[www.art-dept.com](http://www.art-dept.com)

# Art Department



Joseph Episcopo

[www.art-dept.com](http://www.art-dept.com)



# Art Department



Joseph Episcopo

[www.art-dept.com](http://www.art-dept.com)

# Art Department



Joseph Episcopo

[www.art-dept.com](http://www.art-dept.com)



# Art Department



Joseph Episcopo

[www.art-dept.com](http://www.art-dept.com)

# Art Department



Joseph Episcopo

[www.art-dept.com](http://www.art-dept.com)



# Art Department



Joseph Episcopo

[www.art-dept.com](http://www.art-dept.com)

# Art Department



Joseph Episcopo

[www.art-dept.com](http://www.art-dept.com)



# Art Department



Joseph Episcopo

[www.art-dept.com](http://www.art-dept.com)

# Art Department



Joseph Episcopo

[www.art-dept.com](http://www.art-dept.com)



# Art Department



Joseph Episcopo

[www.art-dept.com](http://www.art-dept.com)

# Art Department



Joseph Episcopo

[www.art-dept.com](http://www.art-dept.com)



# Art Department



Joseph Episcopo

[www.art-dept.com](http://www.art-dept.com)

# Art Department



Joseph Episcopo

[www.art-dept.com](http://www.art-dept.com)



# Art Department



Joseph Episcopo

[www.art-dept.com](http://www.art-dept.com)

# Art Department



Joseph Episcopo

[www.art-dept.com](http://www.art-dept.com)



# Art Department



Joseph Episcopo

[www.art-dept.com](http://www.art-dept.com)

# Art Department



Joseph Episcopo

[www.art-dept.com](http://www.art-dept.com)



# Art Department



**got nowhere to go, I'm running slow**

photographed by ben lamberty  
styled by joseph episcopo

black cotton crop top  
helmut lang  
pleated cotton skirt  
and shoes zara

## Joseph Episcopo

[www.art-dept.com](http://www.art-dept.com)

# Art Department



Joseph Episcopo

[www.art-dept.com](http://www.art-dept.com)



# Art Department



Joseph Episcopo

[www.art-dept.com](http://www.art-dept.com)

# Art Department



Look: **GIORGIO ARMANI**.  
Styling: **RODRIGO OTAZU**.  
Panties: **CHLOE**.  
Top: **SCREAMING**.  
MIMI'S NYC.  
Cintura: **THE FAMILY**.  
JEWELS NYC.  
Bolsa: **ALEJANDRO**.  
INGELMO.

Todos los componentes  
de esta historia nos  
provocan deseo,  
ambición y los más  
bajos instintos por  
poseerlo todo.

FOTOS:  
ALEXANDER NEUMANN  
STYLING: JOSEPH EPISCOPO  
PRODUCCIÓN ELLE MÉXICO

## Joseph Episcopo

[www.art-dept.com](http://www.art-dept.com)



# Art Department



Corsé, **SCREAMING  
MIMI'S NYC.**  
Shirts, **D&G.**  
Máscara de perlas,  
**MERCURA  
JEWELRY.**  
Joyería,  
**RODRIGO  
OTAZU.**

Joseph Episcopo

[www.art-dept.com](http://www.art-dept.com)

# Art Department



Joseph Episcopo

[www.art-dept.com](http://www.art-dept.com)



# Art Department



Joseph Episcopo

[www.art-dept.com](http://www.art-dept.com)

# Art Department



Joseph Episcopo

[www.art-dept.com](http://www.art-dept.com)



# Art Department



Joseph Episcopo

[www.art-dept.com](http://www.art-dept.com)

# Art Department



Joseph Episcopo

[www.art-dept.com](http://www.art-dept.com)



# Art Department



Joseph Episcopo

[www.art-dept.com](http://www.art-dept.com)

# Art Department



Joseph Episcopo

[www.art-dept.com](http://www.art-dept.com)



# Art Department



Joseph Episcopo

[www.art-dept.com](http://www.art-dept.com)

# Art Department



Joseph Episcopo

[www.art-dept.com](http://www.art-dept.com)



# Art Department



Joseph Episcopo

[www.art-dept.com](http://www.art-dept.com)



# Art Department



Joseph Episcopo

[www.art-dept.com](http://www.art-dept.com)



# Art Department



Joseph Episcopo

[www.art-dept.com](http://www.art-dept.com)



# Art Department



Joseph Episcopo

[www.art-dept.com](http://www.art-dept.com)



# Art Department

Top, Gucci

Spring's new smoky is less temptress, more muse. Use deep taupe eyeshadow instead of black. Christian Dior 1 Couleur Eyeshadow in Brown Fever #566.

CLASSICAL



Photographer — JASON KIM; Stylist — JOSEPH EPISCOPO; Make-Up — SAMANTHA TRINH USING DIOR BEAUTY (ATELIER MGMT)  
Hair — SEIJI (THE WALL GROUP); Manicure — AGNES (KATE RYAN INC); Model — ALI MICHAEL (Elite); Photo Assistants — CHAD MEYER, J. WANG

## Joseph Episcopo

[www.art-dept.com](http://www.art-dept.com)

# Art Department

Dress, Isabella Tonchi; Jewelry, Prada

Bold bright lips? Check. To balance the look, keep skin fresh by skipping the powder. Makeup For Ever Aqua Cream #8 Red for lips and cheeks.

THEORIES



THE BLOCK — 105

*The Block's* beauty editor, Samantha Trinh, tries out classic masculine and feminine beauty notes on the ceaselessly charming Ali Michael. We all know about lipstick lesbians but did you know that even tomboys can do a smoky eye?

## Joseph Episcopo

[www.art-dept.com](http://www.art-dept.com)



# Art Department



Joseph Episcopo

[www.art-dept.com](http://www.art-dept.com)

# Art Department



Joseph Episcopo

[www.art-dept.com](http://www.art-dept.com)



# Art Department



Q  
E

DESDE LA MADRE PATRIA, ESTA TEMPORADA LLEGA LA  
INSPIRACIÓN COMPLETA PARA CONSEGUIR IRRESISTIBLES LOOKS  
QUE HARÁN QUE TE LLEVES UNA OVACIÓN.

FOTOS: JASON KIM  
COORDINACIÓN DE MODA: JOSEPH EPISCOPO  
PRODUCCIÓN ELLE MEXICO

## Joseph Episcopo

[www.art-dept.com](http://www.art-dept.com)

# Art Department



Aretes, PRADA.  
Vestido, STELLA  
MCCARTNEY.  
Faldas, MIU MIU.  
Bolsa, WHAT COMES  
AROUND GOES  
AROUND.  
Zapatos, POLLINI.

Modelo: Kelsey  
Van Mook @ Next.  
Asistentes de foto:  
Joey Trisclini J. Wang  
Maquillaje:  
Monemi Inai @ Sea  
Management  
Pelo: Seij @ The Wall  
Group.  
Manicure: Kelly @ De  
Fado Inc.  
Postproducción:  
Diana Aguilar

## Joseph Episcopo

[www.art-dept.com](http://www.art-dept.com)



# Art Department



Joseph Episcopo

[www.art-dept.com](http://www.art-dept.com)

# Art Department



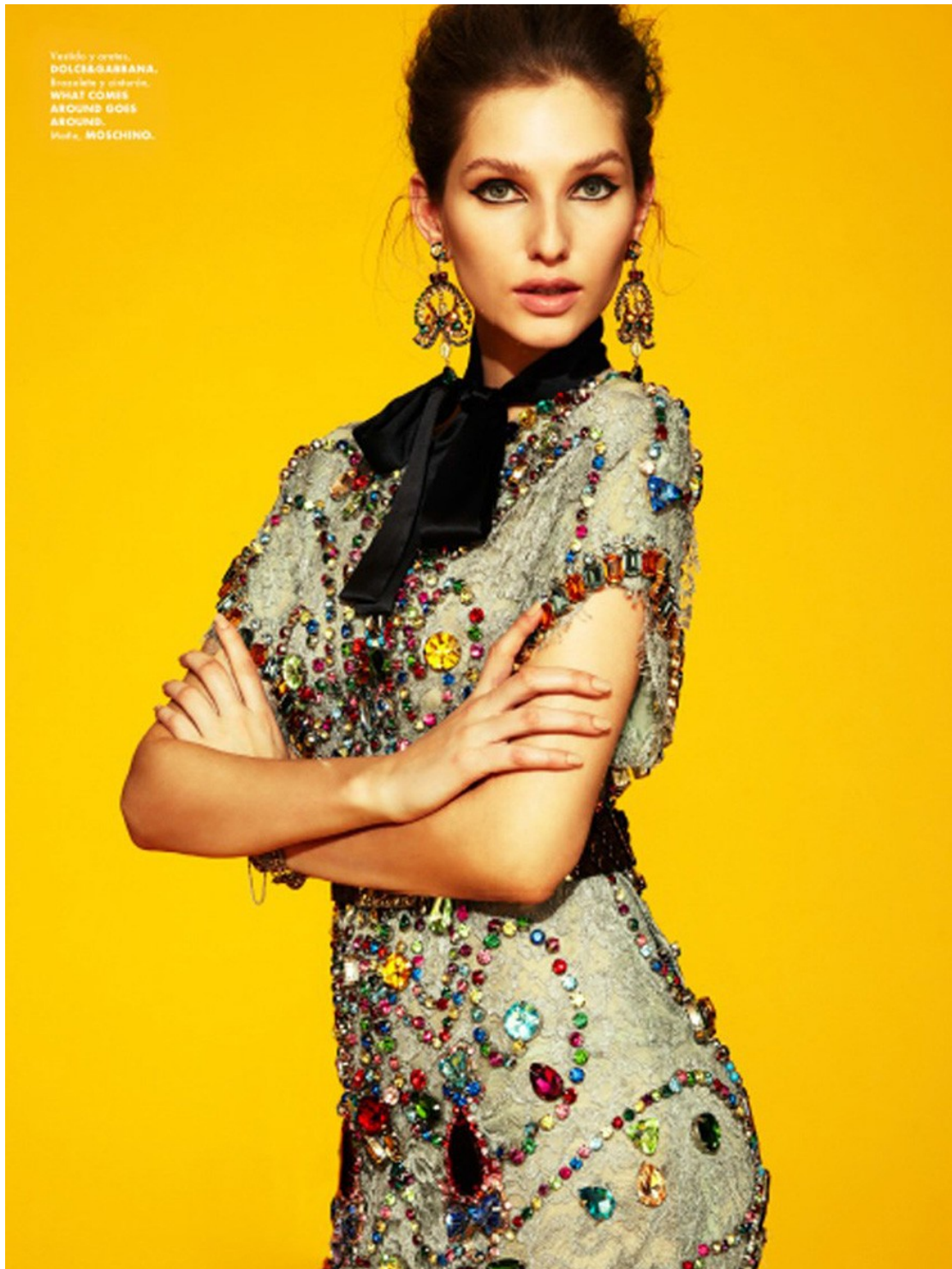
Top y falda,  
DONNA KARAN.  
Vestido,  
PRABAL GURUNG.  
Aretes,  
OSCAR DE LA RENTA.  
Bolso, PRADA.

Joseph Episcopo

[www.art-dept.com](http://www.art-dept.com)



# Art Department



Joseph Episcopo

[www.art-dept.com](http://www.art-dept.com)

# Art Department



Joseph Episcopo

[www.art-dept.com](http://www.art-dept.com)



# Art Department



Joseph Episcopo

[www.art-dept.com](http://www.art-dept.com)

# Art Department



## Joseph Episcopo

[www.art-dept.com](http://www.art-dept.com)



# Art Department



Joseph Episcopo

[www.art-dept.com](http://www.art-dept.com)

# Art Department



Joseph Episcopo

[www.art-dept.com](http://www.art-dept.com)



# Art Department



Joseph Episcopo

[www.art-dept.com](http://www.art-dept.com)

# Art Department



Joseph Episcopo

[www.art-dept.com](http://www.art-dept.com)



# Art Department



BLACK WOOL JACKET WITH WHITE COLLAR BY MIU MIU  
BLACK LEATHER BOOTS BY DIESEL  
WHITE MEN'S UNDERWEAR BY HUGO BOSS

## Joseph Episcopo

[www.art-dept.com](http://www.art-dept.com)

# Art Department



Joseph Episcopo

[www.art-dept.com](http://www.art-dept.com)



# Art Department



Joseph Episcopo

[www.art-dept.com](http://www.art-dept.com)

# Art Department



Joseph Episcopo

[www.art-dept.com](http://www.art-dept.com)



# Art Department



Joseph Episcopo

[www.art-dept.com](http://www.art-dept.com)

# Art Department



Joseph Episcopo

[www.art-dept.com](http://www.art-dept.com)



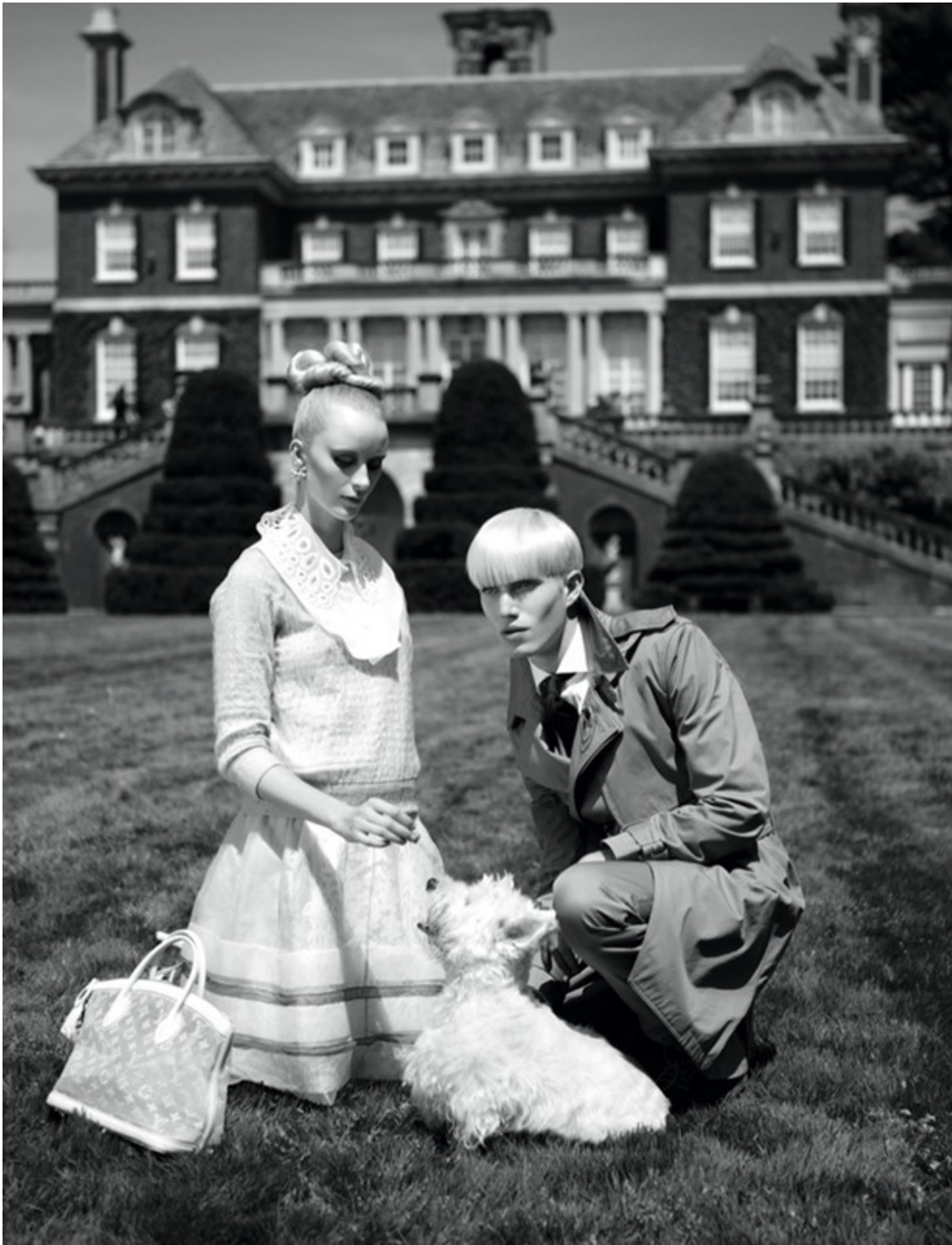
# Art Department



Joseph Episcopo

[www.art-dept.com](http://www.art-dept.com)

# Art Department



Joseph Episcopo

[www.art-dept.com](http://www.art-dept.com)



# Art Department



EDITH  
WIKKLE OUTFIT BY CHRISTIAN DIOR  
EARRINGS BY STYLISTS OWN VINTAGE  
NECKLACE BY STYLIST'S OWN VINTAGE

CONNOR  
WIKKLE OUTFIT BY RALPH LAUREN  
POCKET HANDKERCHIEF BY BRUNELLO CUCINELLI  
SHOES BY ETRO

## Joseph Episcopo

[www.art-dept.com](http://www.art-dept.com)

# Art Department



Joseph Episcopo

[www.art-dept.com](http://www.art-dept.com)



# Art Department



Joseph Episcopo

[www.art-dept.com](http://www.art-dept.com)

# Art Department



Joseph Episcopo

[www.art-dept.com](http://www.art-dept.com)



# Art Department



Joseph Episcopo

[www.art-dept.com](http://www.art-dept.com)

# Art Department



Joseph Episcopo

[www.art-dept.com](http://www.art-dept.com)



# Art Department



Joseph Episcopo

[www.art-dept.com](http://www.art-dept.com)

# Art Department



Joseph Episcopo

[www.art-dept.com](http://www.art-dept.com)



# Art Department



Joseph Episcopo

[www.art-dept.com](http://www.art-dept.com)

# Art Department



Joseph Episcopo

[www.art-dept.com](http://www.art-dept.com)



# Art Department



Joseph Episcopo

[www.art-dept.com](http://www.art-dept.com)

# Art Department



Joseph Episcopo

[www.art-dept.com](http://www.art-dept.com)



# Art Department



Joseph Episcopo

[www.art-dept.com](http://www.art-dept.com)

# Art Department



## Joseph Episcopo

[www.art-dept.com](http://www.art-dept.com)



# Art Department



Joseph Episcopo

[www.art-dept.com](http://www.art-dept.com)

# Art Department



Joseph Episcopo

[www.art-dept.com](http://www.art-dept.com)



# Art Department



Joseph Episcopo

[www.art-dept.com](http://www.art-dept.com)

# Art Department



Joseph Episcopo

[www.art-dept.com](http://www.art-dept.com)



# Art Department



Joseph Episcopo

[www.art-dept.com](http://www.art-dept.com)

# Art Department



Joseph Episcopo

[www.art-dept.com](http://www.art-dept.com)



# Art Department



Joseph Episcopo

[www.art-dept.com](http://www.art-dept.com)

# Art Department



Joseph Episcopo

[www.art-dept.com](http://www.art-dept.com)