

Art Department



Alison Edmond

www.art-dept.com

Art Department



Alison Edmond

www.art-dept.com

Art Department



Alison Edmond

www.art-dept.com

Art Department



Alison Edmond

www.art-dept.com

Art Department



Alison Edmond

www.art-dept.com

Art Department



Alison Edmond

www.art-dept.com

Art Department



Alison Edmond

www.art-dept.com

Art Department



Alison Edmond

www.art-dept.com

Art Department



Alison Edmond

www.art-dept.com

Art Department



Alison Edmond

www.art-dept.com

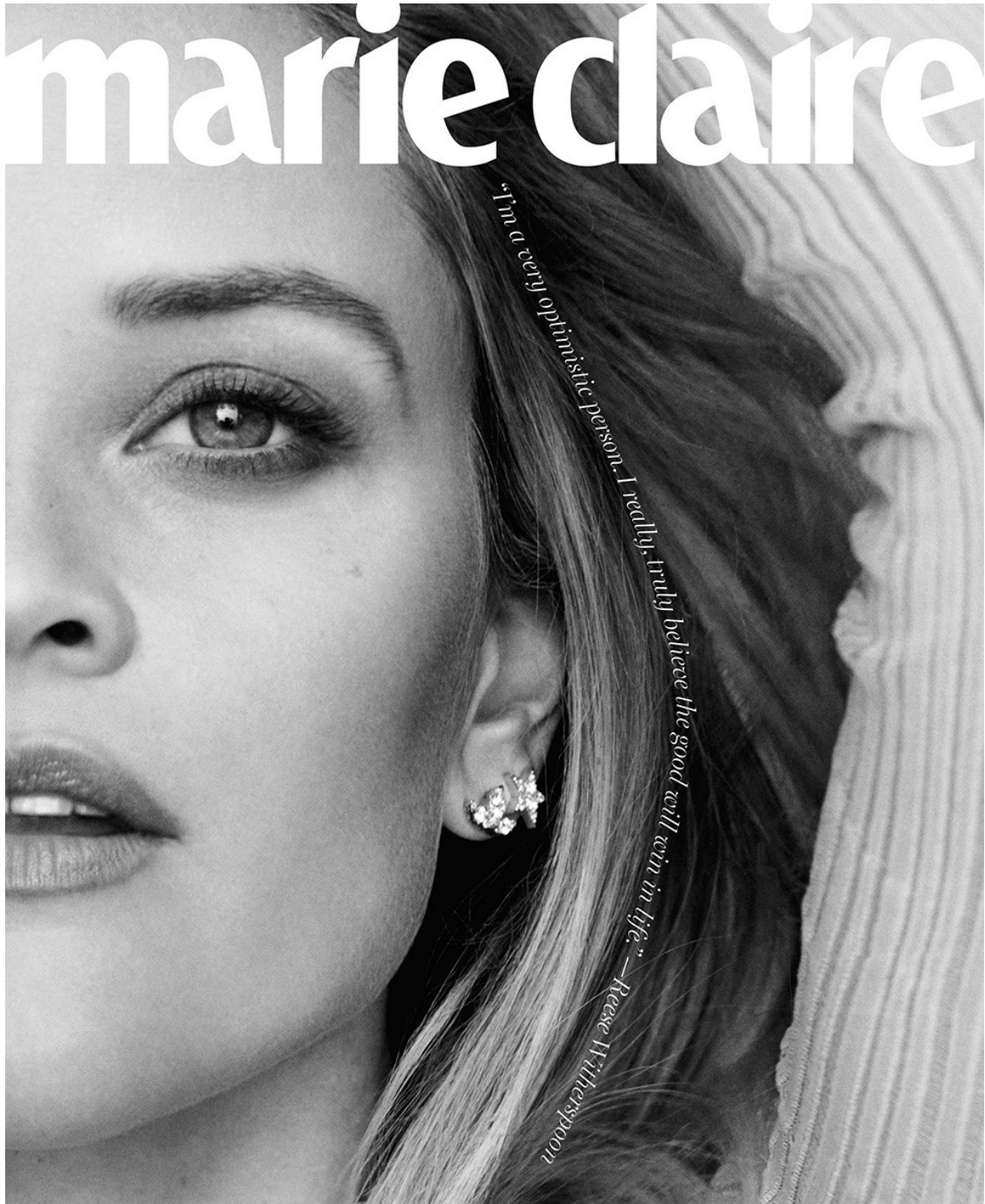
Art Department

The image is a cover of Marie Claire magazine from March 2018. It features a close-up portrait of actress Reese Witherspoon. She has long, wavy blonde hair and is looking directly at the camera with a slight smile. She is wearing a light pink, ribbed, long-sleeved top with ruffled cuffs. Her hand is resting near her chin. The magazine title 'marie claire' is in large white letters at the top. To the right, it says 'MARCH 2018' and 'SPRING FASHION'. On the left, there is a large '21' followed by the text 'TOUGH QUESTIONS ABOUT SEX, LIES & HR YOU NEED ANSWERED NOW*'. On the right, there is a headline 'Reese RISING' followed by 'FACING FEAR, EMBRACING AMBITION & CALLING TIME'S UP!'. At the bottom, the words 'FRESH START' are written in large, bold, black letters, followed by the tagline 'THE GAME'S CHANGED. RAISE YOUR VOICE. GET WHAT YOU WANT.' and a small note '*BY THE EDITORS OF MC & ESQUIRE'.

Alison Edmond

www.art-dept.com

Art Department



Alison Edmond

www.art-dept.com

Art Department

A black and white close-up portrait of actress Reese Witherspoon. She is looking directly at the camera with a neutral expression. Her hair is light-colored and slightly tousled. She is wearing a large, ornate diamond earring. The background is dark and out of focus.

REESE
The award-winning actress and producer who runs two of her own companies takes on another challenge

GETS
as a force for Time's Up. This month, as Reese Witherspoon stars in sci-fi fantasy A Wrinkle in Time, we take a look inside her universe

REAL
Interview by ANNE FULENWIDER
Photographs by THOMAS WHITESIDE

HEAD FOR BUSINESS
TRIPLE DIAMOND EARRINGS, PRICE UPON REQUEST, STAR EARRINGS, \$5,450, HEARTS ON FIRE, ONE EYES, ELIZABETH ARDEN GRAND ENTRANCE MASCARA
Fashion Editor: ALISON EDMOND

Alison Edmond

www.art-dept.com

Art Department



Alison Edmond

www.art-dept.com

Art Department



Alison Edmond

www.art-dept.com

Art Department



Alison Edmond

www.art-dept.com

Art Department



Alison Edmond

www.art-dept.com

Art Department



Alison Edmond

www.art-dept.com

Art Department



Alison Edmond

www.art-dept.com

Art Department



Alison Edmond

www.art-dept.com