

# Art Department



Zac Mitchell

[www.art-dept.com](http://www.art-dept.com)

# Art Department



Zac Mitchell

[www.art-dept.com](http://www.art-dept.com)



# Art Department



Zac Mitchell

[www.art-dept.com](http://www.art-dept.com)

# Art Department



Zac Mitchell

[www.art-dept.com](http://www.art-dept.com)



# Art Department



Zac Mitchell

[www.art-dept.com](http://www.art-dept.com)

# Art Department



Zac Mitchell

[www.art-dept.com](http://www.art-dept.com)



# Art Department



Zac Mitchell

[www.art-dept.com](http://www.art-dept.com)



# Art Department



Zac Mitchell

[www.art-dept.com](http://www.art-dept.com)



# Art Department



Zac Mitchell

[www.art-dept.com](http://www.art-dept.com)



# Art Department

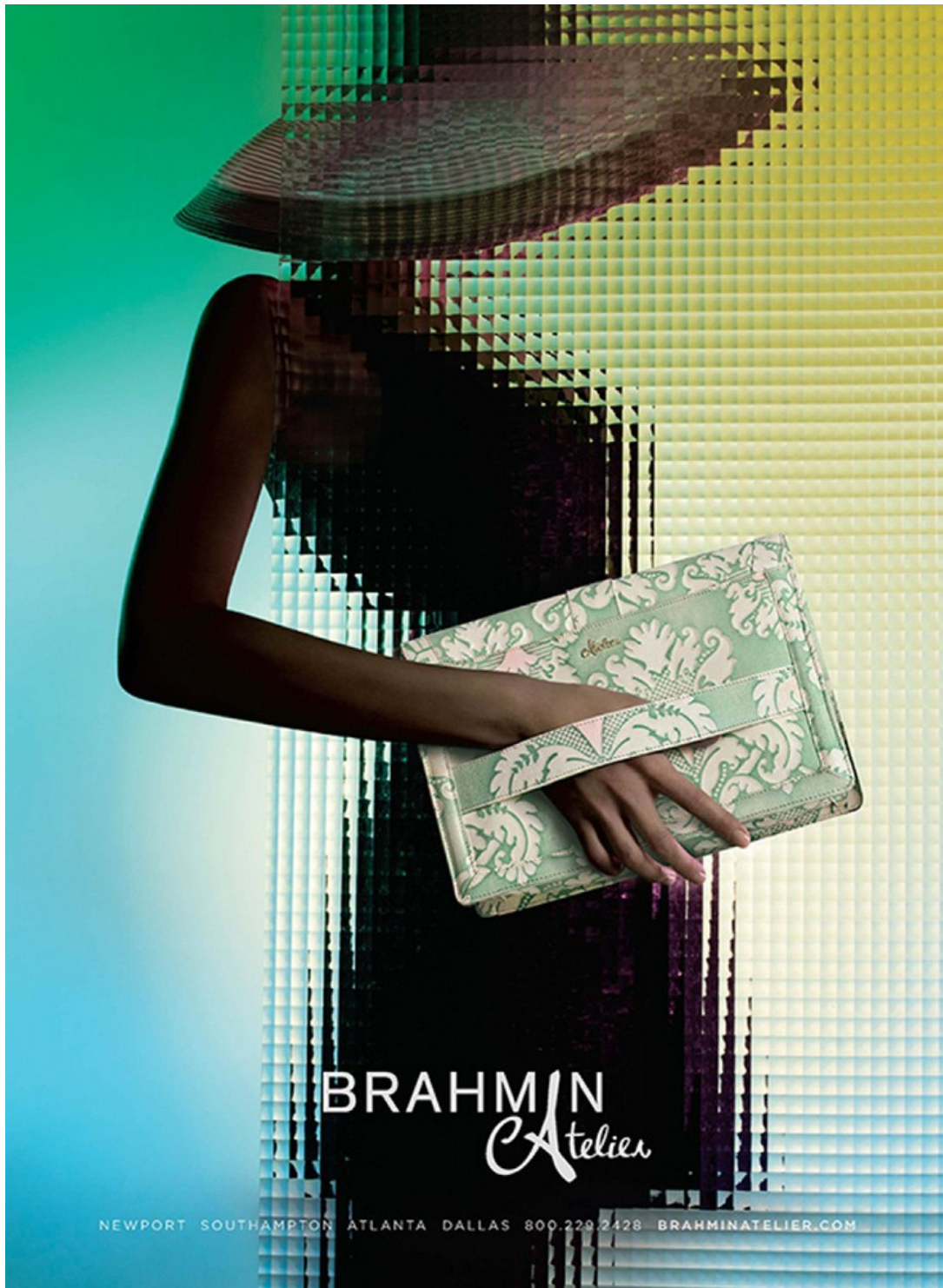


Zac Mitchell

[www.art-dept.com](http://www.art-dept.com)



# Art Department



Zac Mitchell

[www.art-dept.com](http://www.art-dept.com)

# Art Department



Zac Mitchell

[www.art-dept.com](http://www.art-dept.com)



# Art Department



Zac Mitchell

[www.art-dept.com](http://www.art-dept.com)

# Art Department



Zac Mitchell

[www.art-dept.com](http://www.art-dept.com)



# Art Department



Zac Mitchell

[www.art-dept.com](http://www.art-dept.com)



# Art Department



Zac Mitchell

[www.art-dept.com](http://www.art-dept.com)



# Art Department



Zac Mitchell

[www.art-dept.com](http://www.art-dept.com)

# Art Department



Zac Mitchell

[www.art-dept.com](http://www.art-dept.com)



# Art Department



Zac Mitchell

[www.art-dept.com](http://www.art-dept.com)



# Art Department



Zac Mitchell

[www.art-dept.com](http://www.art-dept.com)



# Art Department



Zac Mitchell

[www.art-dept.com](http://www.art-dept.com)



# Art Department



Zac Mitchell

[www.art-dept.com](http://www.art-dept.com)



# Art Department



Zac Mitchell

[www.art-dept.com](http://www.art-dept.com)



# Art Department



Zac Mitchell

[www.art-dept.com](http://www.art-dept.com)



# Art Department



Zac Mitchell

[www.art-dept.com](http://www.art-dept.com)



# Art Department



Zac Mitchell

[www.art-dept.com](http://www.art-dept.com)



# Art Department



Zac Mitchell

[www.art-dept.com](http://www.art-dept.com)

# Art Department



Zac Mitchell

[www.art-dept.com](http://www.art-dept.com)



# Art Department



Zac Mitchell

[www.art-dept.com](http://www.art-dept.com)

# Art Department



Zac Mitchell

[www.art-dept.com](http://www.art-dept.com)



# Art Department



Zac Mitchell

[www.art-dept.com](http://www.art-dept.com)



# Art Department



Zac Mitchell

[www.art-dept.com](http://www.art-dept.com)



# Art Department



Zac Mitchell

[www.art-dept.com](http://www.art-dept.com)



# Art Department



Zac Mitchell

[www.art-dept.com](http://www.art-dept.com)



# Art Department



Zac Mitchell

[www.art-dept.com](http://www.art-dept.com)



# Art Department



Zac Mitchell

[www.art-dept.com](http://www.art-dept.com)



# Art Department



Zac Mitchell

[www.art-dept.com](http://www.art-dept.com)



# Art Department



Zac Mitchell

[www.art-dept.com](http://www.art-dept.com)



# Art Department



Zac Mitchell

[www.art-dept.com](http://www.art-dept.com)



# Art Department



Zac Mitchell

[www.art-dept.com](http://www.art-dept.com)



# Art Department



Zac Mitchell

[www.art-dept.com](http://www.art-dept.com)



# Art Department



Zac Mitchell

[www.art-dept.com](http://www.art-dept.com)



# Art Department



Zac Mitchell

[www.art-dept.com](http://www.art-dept.com)



# Art Department



Zac Mitchell

[www.art-dept.com](http://www.art-dept.com)



# Art Department



Zac Mitchell

[www.art-dept.com](http://www.art-dept.com)



# Art Department



Zac Mitchell

[www.art-dept.com](http://www.art-dept.com)



# Art Department



Zac Mitchell

[www.art-dept.com](http://www.art-dept.com)



# Art Department



**OPPOSITE PAGE:**  
**HOODED FIELD COAT**  
COLOR: Marshwood. FABRIC: Cotton. Imported. Machine wash.  
SIZE: S-XXL.  
\$249 / cf275032

**WASHED TWILL CHINO SHIRT**  
SEE PAGE 25

**SHORT-SLEEVE SPORT CREW**  
COLOR: Gray Heather (on him, left), Antique Red (on him, right), Ebony. FABRIC: Cotton and polyester. Imported. Machine wash.  
SIZE: S-XXL.  
\$69 / cf275036

**WASHED FATIGUE SHORT**  
COLOR: Pine Bark (on him), Caramel. FABRIC: Cotton. Imported. Machine wash.  
WAIST: Even 30-42, plus 31, 33, 35.  
\$59 / cf274997

**THIS PAGE:**  
**FIELD CARGO SHORT**  
COLOR: Dark Khaki (on him), Dark Navy. FABRIC: Cotton ripstop. Imported. Machine wash.  
WAIST: Even 30-42, plus 31, 33, 35.  
\$79 / cf274994

**BEAN'S ZIPPER DUFFLE**  
COLOR: Kindling (shown), True Black. Medium and Large also in Bright Navy. MATERIAL: Waxed cotton canvas, leather handles. Imported. MEASURES: small 8 1/2" H x 16" W x 7 1/4" D, medium 12 1/2" H x 25" W x 12 1/2" D, large 14 1/2" H x 27" W x 14 1/2" D.  
\$125 / small / cf272945  
\$150 / medium / cf270232  
\$175 / large / cf266751  
MEDIUM IN KINDLING NOT AVAILABLE

**WAXED CANVAS MAINE HUNTING SHOE**  
COLOR: Marsh Brown/Brown (on him), Navy/Brown, Deep Forest/Brown. MATERIAL: Waxed canvas upper. Made in Maine. WHOLE SIZE: Medium D 7-14.  
\$139 / cf262905

22/23

Zac Mitchell

[www.art-dept.com](http://www.art-dept.com)



# Art Department

A man with a beard and a tan baseball cap is sitting on a grey suitcase. He is wearing a blue chambray shirt, olive green pants, and brown leather boots. He is smiling at the camera. The background is a rustic wooden wall.

**THIS PAGE:**  
**CHAMBRAY SHIRT**  
COLOR: Dark Indigo. **FABRIC:** Cotton chambray. Imported. Machine wash. **SIZE:** S-XXL.  
\$69 / cf275282

**SIGNATURE BELT**  
SEE ONLINE

**WASHED FATIGUE PANT**  
COLOR: Pine Bark (on him), Caramel. **FABRIC:** Cotton. Imported. Machine wash. **WAIST:** Even 30-42, plus 31, 33, 35. **INSEAM:** 29", 32", 34", 36". 36" inseam only available in 34 waist and larger.  
\$69 / cf276132

**LEATHER MAINE HUNTING SHOE**  
COLOR: Brown/Brown. **MATERIAL:** Leather. Made in Maine. Measures 12" in height. **WHOLE SIZE:** Medium D 7-14.  
\$185 / cf272944

**OPPOSITE PAGE:**  
**EASTPORT HANDSEWN BLUCHER MOC, RANGER MOC AND RANGER BOOT**  
COLOR: Brown (shown in Ranger Moc), Black. **MATERIAL:** Leather. Imported. **SIZE:** Medium D 7-12, 13, 14.  
\$69 / blucher moc / cf262923  
\$79 / ranger moc / cf262949  
\$99 / ranger boot / cf270122  
BLUCHER MOC IN BROWN NOT AVAILABLE

**SIGNATURE FIELD WATCH**  
COLOR: Black. **MATERIAL:** Nylon straps with leather backing. Made in Switzerland. One size.  
\$129 / cf276039

**VINTAGE METAL FIELD WATCH**  
COLOR: Silver (shown), Gold. **MATERIAL:** Polished brushed metal, stainless-steel case. Made in Switzerland. One size.  
\$225 / cf270171

**CANVAS WORK JACKET**  
COLOR: Saddle. **FABRIC:** Cotton. Imported. Machine wash. **SIZE:** S-XXL.  
\$129 / cf275033

**HUNTER'S PLAID SHIRT**  
COLOR: Royal Blue/Adobe Red (on him), Mountain Blue. **FABRIC:** Cotton. Imported. Machine wash. **SIZE:** S-XXL.  
\$69 / cf266777

@ LLBEANSIGNATURE.COM / 800-650-5975

Zac Mitchell

www.art-dept.com



# Art Department



Zac Mitchell

[www.art-dept.com](http://www.art-dept.com)



# Art Department

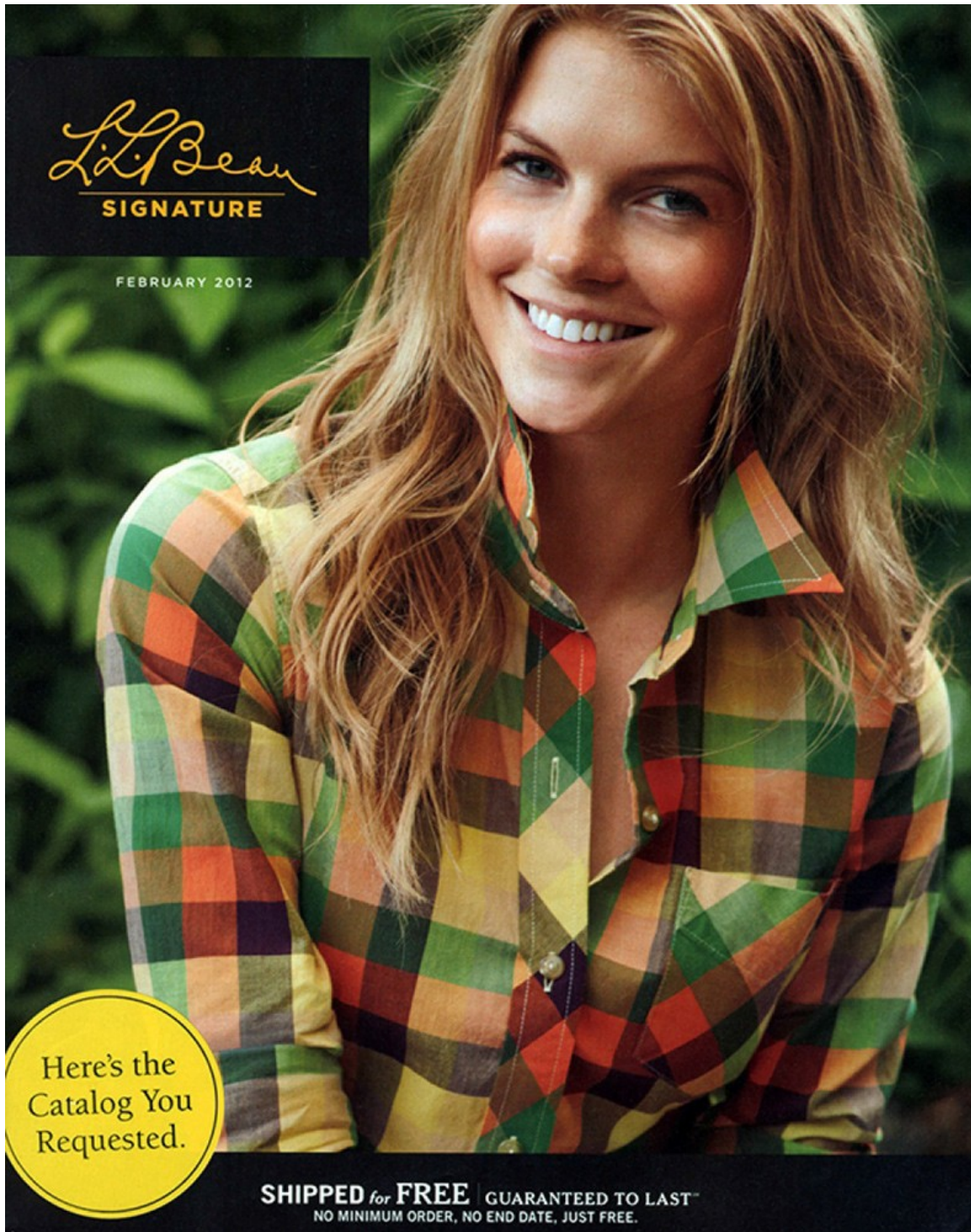


Zac Mitchell

[www.art-dept.com](http://www.art-dept.com)



# Art Department



*L.L. Bean*  
SIGNATURE

FEBRUARY 2012

Here's the  
Catalog You  
Requested.

**SHIPPED for FREE** | GUARANTEED TO LAST™  
NO MINIMUM ORDER, NO END DATE, JUST FREE.

Zac Mitchell

[www.art-dept.com](http://www.art-dept.com)



# Art Department



Zac Mitchell

[www.art-dept.com](http://www.art-dept.com)



# Art Department



Zac Mitchell

[www.art-dept.com](http://www.art-dept.com)



# Art Department



Zac Mitchell

[www.art-dept.com](http://www.art-dept.com)



# Art Department



Zac Mitchell

[www.art-dept.com](http://www.art-dept.com)



# Art Department



*Jord + Taylor*

Zac Mitchell

[www.art-dept.com](http://www.art-dept.com)



# Art Department

crewcuts  
for ages 2-10.

MAKE YOUR LIST. check it twice...  
something for the little ones,  
naughty and nice...something for  
everyone at [crewcutkids.com](http://crewcutkids.com).

LOOK 1

button-down cardigan  
Cotton, button-down, long-sleeved, buttoned, XS-XL  
\$15.00W \$5.00

DETAILS: 100% COTTON 100% COTTON 100% COTTON

lightweight flannel shirt  
Flannel, short-sleeved, button-down, buttoned, XS-XL  
\$15.00W \$5.00

solid wool dress pant  
Wool, Elastic, short-sleeved, button-down, XS-XL  
\$14.00W \$4.00

LOOK 2

cashmere baby dress  
Soft, luxurious, 100% cashmere, 12" gauge, XS-XL  
\$15.00W \$5.00

DETAILS: 100% COTTON 100% COTTON 100% COTTON

polka-dot earflap hat  
Wool, Cotton, short-sleeved, button-down, XS-XL  
\$14.00W \$4.00

DETAILS: 100% COTTON 100% COTTON 100% COTTON

Shawn with Hunter® Wellington boots  
\$14.00W \$4.00

LOOK 3

grey wool legacy jacket  
Fine-gauge, wool, 12" gauge, XS-XL, partially lined  
\$15.00W \$5.00

secret wash banker-stripe shirt  
Cotton, Flannel, short-sleeved, button-down, XS-XL  
\$14.00W \$4.00

DETAILS: 100% COTTON 100% COTTON 100% COTTON

paint-splatter jean  
Fringed, denim, short-sleeved, Elastic, XS-XL  
\$14.00W \$4.00

DETAILS: 100% COTTON 100% COTTON 100% COTTON

Shawn with Hunter® Wellington boots  
\$14.00W \$4.00

LOOK 4

black watch flared jacket  
Wool, Fully lined, 12" gauge, XS-XL, watch button  
\$15.00W \$5.00

secret wash white poplin shirt  
Cotton, Flannel, short-sleeved, button-down, XS-XL  
\$14.00W \$4.00

DETAILS: 100% COTTON 100% COTTON 100% COTTON

levi's® selvedge rinse jean  
Fringed, denim, short-sleeved, Elastic, XS-XL  
\$14.00W \$4.00

DETAILS: 100% COTTON 100% COTTON 100% COTTON

Shawn with Hunter® Wellington boots  
\$14.00W \$4.00

LOOK 5

cashmere v-neck sweater  
Soft, luxurious, 100% cashmere, 12" gauge, XS-XL  
\$15.00W \$5.00

DETAILS: 100% COTTON 100% COTTON 100% COTTON

banker-stripe, pxford shirt  
Cotton, Flannel, short-sleeved, button-down, XS-XL  
\$14.00W \$4.00

DETAILS: 100% COTTON 100% COTTON 100% COTTON

wool herringbone suit pant  
Wool, Elastic, short-sleeved, button-down, XS-XL  
\$14.00W \$4.00

DETAILS: 100% COTTON 100% COTTON 100% COTTON

Shawn with Hunter® Wellington boots  
\$14.00W \$4.00

DETAILS: 100% COTTON 100% COTTON 100% COTTON

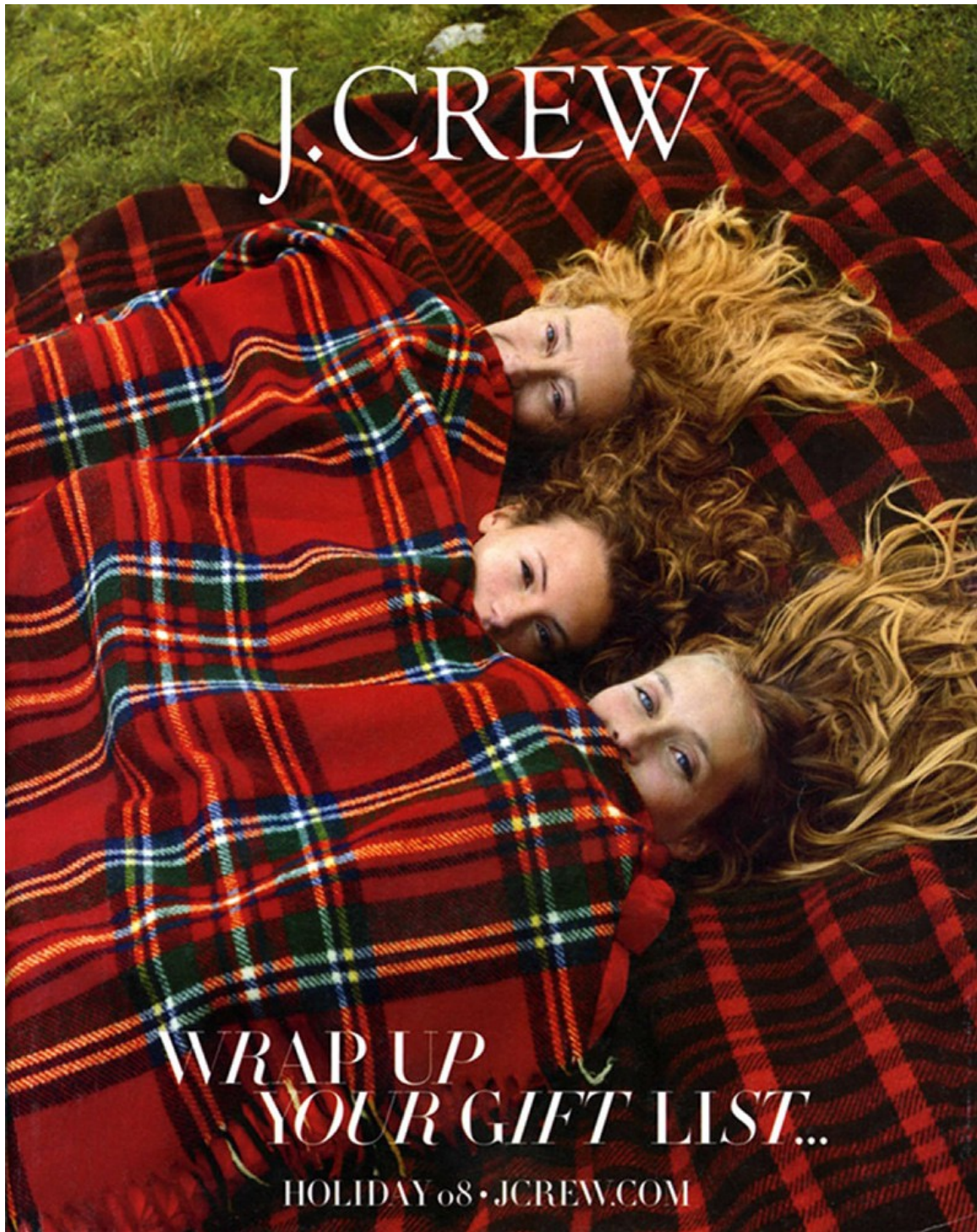
©2011 CREWCUTKIDS.COM

# Zac Mitchell

www.art-dept.com



# Art Department



Zac Mitchell

[www.art-dept.com](http://www.art-dept.com)



# Art Department

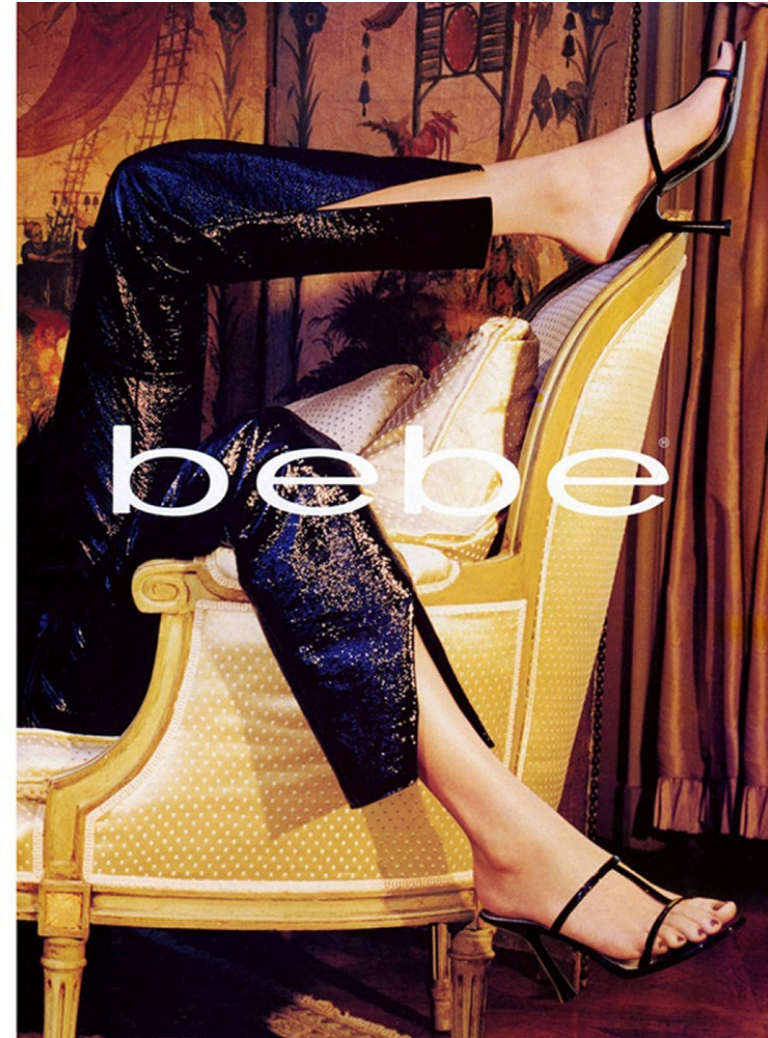


Zac Mitchell

[www.art-dept.com](http://www.art-dept.com)



# Art Department



Zac Mitchell

[www.art-dept.com](http://www.art-dept.com)



# Art Department



Zac Mitchell

[www.art-dept.com](http://www.art-dept.com)



# Art Department



Zac Mitchell

[www.art-dept.com](http://www.art-dept.com)



# Art Department



Zac Mitchell

[www.art-dept.com](http://www.art-dept.com)



# Art Department

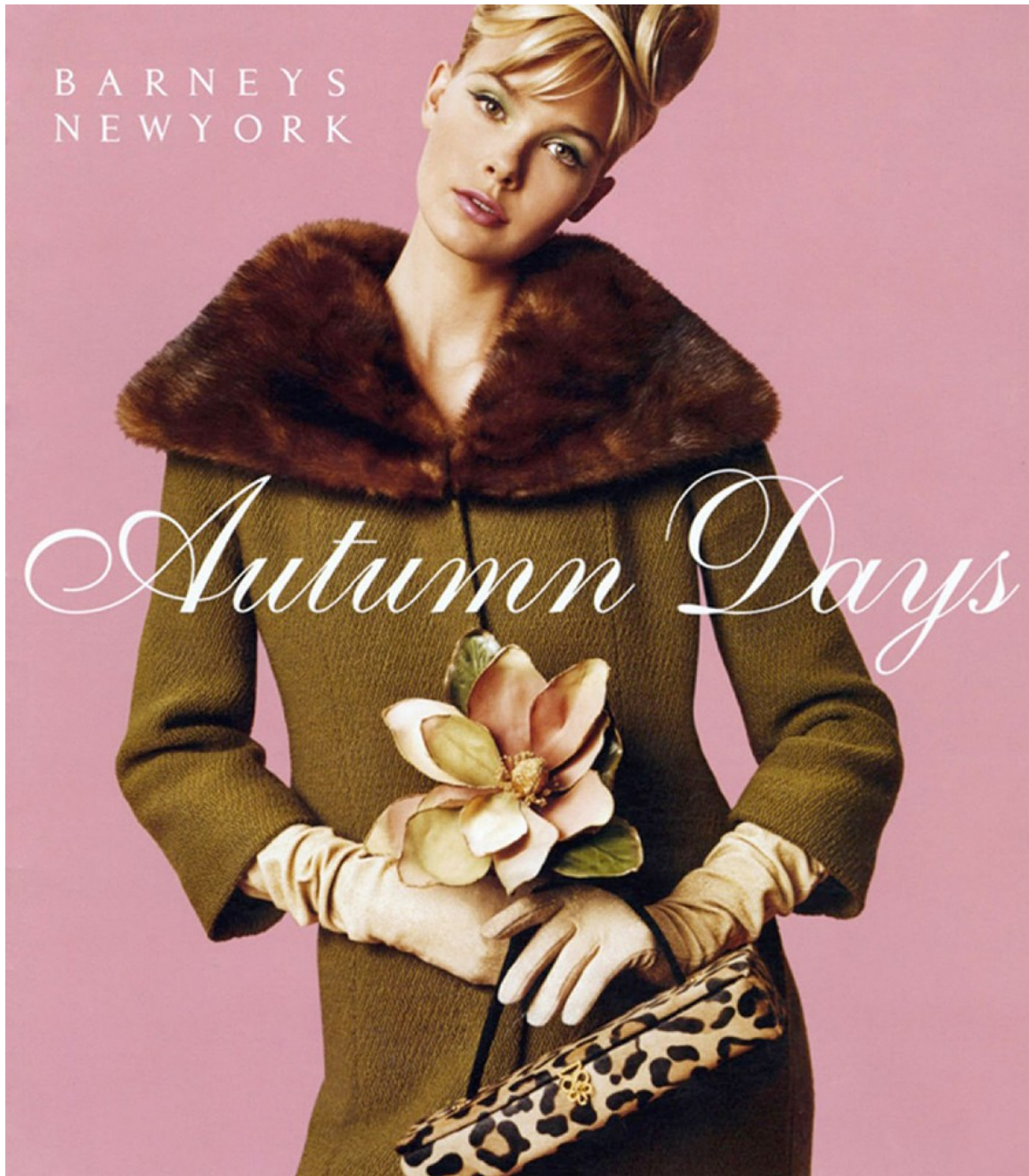


Zac Mitchell

[www.art-dept.com](http://www.art-dept.com)



# Art Department



Zac Mitchell

[www.art-dept.com](http://www.art-dept.com)



# Art Department

*When the frost is on the punkin  
and the fodder's in the shock,  
And you hear the kyouck  
and gobble of the struttin' turkey-cock,  
And the clackin' of the guineys,  
and the cluckin' of the hens,  
And the rooster's hallylooyer  
as he tiptoes on the fence;*

Pink and green tweed sheath dress with velvet trim \$450.  
Satin embroidered bird clutch in nude. Also available in black, pearl, yellow and aqua \$935.  
Suede silk lined long gloves in pink. Also available in black, tan and green \$245.

A fashion advertisement for Art Department. The central figure is a woman with blonde hair styled in a 1920s-inspired bob with a yellow flower. She is wearing a sleeveless, knee-length gold tweed dress with a wide yellow velvet ribbon tied at the waist. She is also wearing long, light-colored gloves and holding a small, ornate clutch bag. To her right is a large, golden Eiffel Tower prop. The background is a solid, muted pink color. The overall aesthetic is reminiscent of early 20th-century fashion photography.

Zac Mitchell

[www.art-dept.com](http://www.art-dept.com)



# Art Department



Silk twill folio print shirt in lavender/brown.  
Also available in green/pink \$295.  
Tweed wide leg trousers in light brown.  
Also available in dark tweed \$295.

## Zac Mitchell

[www.art-dept.com](http://www.art-dept.com)



# Art Department



Zac Mitchell

[www.art-dept.com](http://www.art-dept.com)



# Art Department



happy to unwind

thermos®  
14000 gas grill 139.99  
mosaic bistro table and  
(2) chair set 149.99  
decorative cranes  
39.99

copper finish  
oil lamps 9.99  
fire bowl 59.99  
fire pit bench 29.99  
string lights 8.88  
copper finish torch  
light 14.99

happy inside



shop in-store or online  
at target.com

©2003 Target Stores. All Rights Reserved. Target and the Bullseye Design are registered trademarks of Target Brands, Inc. All rights reserved.

Zac Mitchell

[www.art-dept.com](http://www.art-dept.com)



# Art Department



happy  
to dash

burnt rattan  
accent furniture collection:  
folding screen 79.99  
plant stand 39.99  
bench with 2 drawers 99.99  
Metropolis phone  
19.99

green planter 14.99  
Global Influences  
chest 14.99  
framed art 29.99  
mica table lamp  
24.99

happy  
inside



shop in-store or online  
at target.com

## Zac Mitchell

[www.art-dept.com](http://www.art-dept.com)



# Art Department



Zac Mitchell

[www.art-dept.com](http://www.art-dept.com)



# Art Department



Zac Mitchell

[www.art-dept.com](http://www.art-dept.com)



# Art Department



Zac Mitchell

[www.art-dept.com](http://www.art-dept.com)