

Art Department



Abraham Latham

www.art-dept.com

Art Department



Abraham Latham

www.art-dept.com

Art Department



Abraham Latham

www.art-dept.com

Art Department



Abraham Latham

www.art-dept.com

Art Department



Abraham Latham

www.art-dept.com

Art Department



Abraham Latham

www.art-dept.com

Art Department



Abraham Latham

www.art-dept.com

Art Department



Abraham Latham

www.art-dept.com

Art Department



Abraham Latham

www.art-dept.com

Art Department



Abraham Latham

www.art-dept.com

Art Department



Abraham Latham

www.art-dept.com

Art Department



Abraham Latham

www.art-dept.com

Art Department



Abraham Latham

www.art-dept.com

Art Department



Abraham Latham

www.art-dept.com

Art Department



Abraham Latham

www.art-dept.com

Art Department



Abraham Latham

www.art-dept.com

Art Department



Abraham Latham

www.art-dept.com

Art Department



Abraham Latham

www.art-dept.com

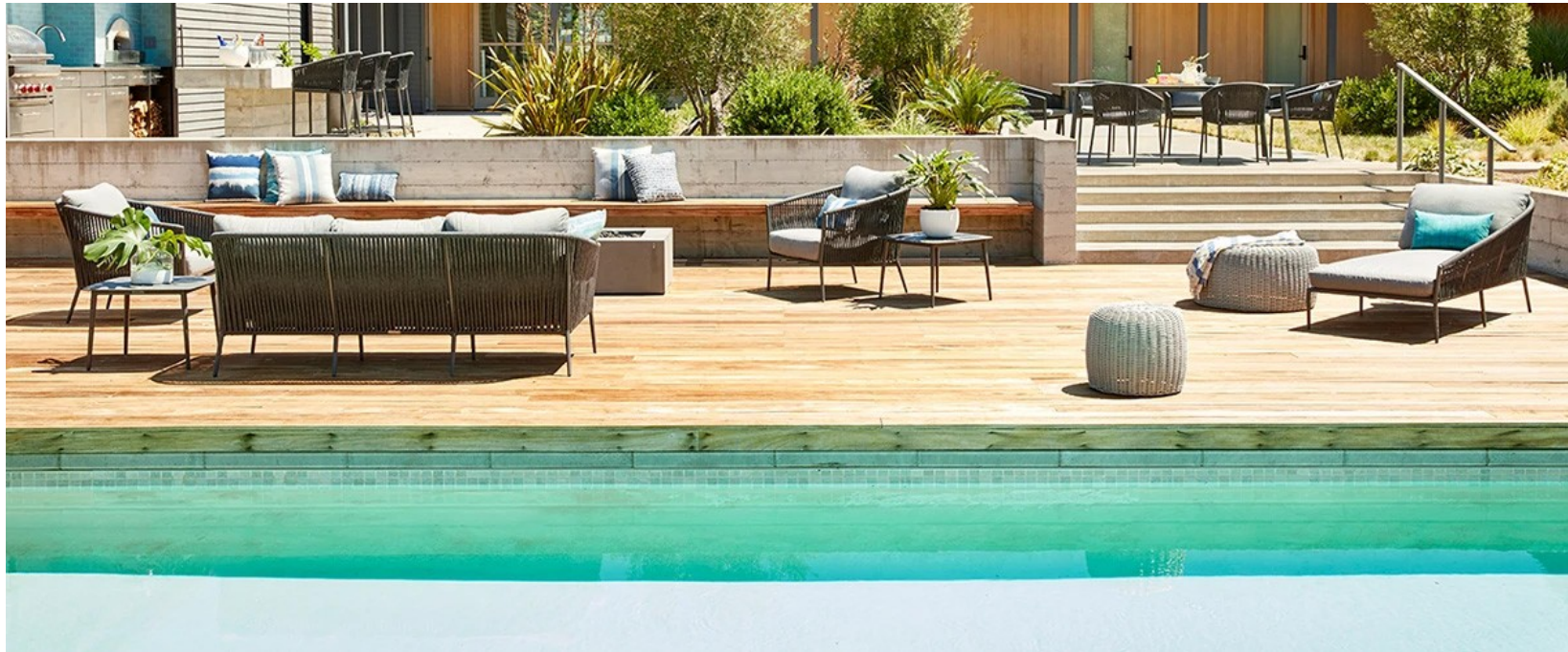
Art Department



Abraham Latham

www.art-dept.com

Art Department



Abraham Latham

www.art-dept.com

Art Department



Abraham Latham

www.art-dept.com

Art Department



Abraham Latham

www.art-dept.com

Art Department



Abraham Latham

www.art-dept.com

Art Department



Abraham Latham

www.art-dept.com

Art Department



Abraham Latham

www.art-dept.com

Art Department



Abraham Latham

www.art-dept.com

Art Department



Abraham Latham

www.art-dept.com

Art Department



Abraham Latham

www.art-dept.com

Art Department



Abraham Latham

www.art-dept.com

Art Department



Abraham Latham

www.art-dept.com

Art Department



Abraham Latham

www.art-dept.com

Art Department



Abraham Latham

www.art-dept.com

Art Department



Abraham Latham

www.art-dept.com

Art Department



Abraham Latham

www.art-dept.com

Art Department



Abraham Latham

www.art-dept.com

Art Department



Abraham Latham

www.art-dept.com

Art Department



Abraham Latham

www.art-dept.com

Art Department



Abraham Latham

www.art-dept.com

Art Department



Abraham Latham

www.art-dept.com

Art Department



Abraham Latham

www.art-dept.com

Art Department



Abraham Latham

www.art-dept.com

Art Department



Abraham Latham

www.art-dept.com

Art Department



Abraham Latham

www.art-dept.com

Art Department



Abraham Latham

www.art-dept.com

Art Department



Abraham Latham

www.art-dept.com

Art Department



Abraham Latham

www.art-dept.com

Art Department



Abraham Latham

www.art-dept.com

Art Department



Abraham Latham

www.art-dept.com

Art Department



Abraham Latham

www.art-dept.com

Art Department



Abraham Latham

www.art-dept.com

Art Department



Abraham Latham

www.art-dept.com

Art Department



Abraham Latham

www.art-dept.com

Art Department



Abraham Latham

www.art-dept.com

Art Department



Abraham Latham

www.art-dept.com

Art Department



Abraham Latham

www.art-dept.com

Art Department



Abraham Latham

www.art-dept.com

Art Department



Abraham Latham

www.art-dept.com

Art Department



Abraham Latham

www.art-dept.com

Art Department



Abraham Latham

www.art-dept.com

Art Department



Abraham Latham

www.art-dept.com

Art Department



Abraham Latham

www.art-dept.com

Art Department



Abraham Latham

www.art-dept.com

Art Department



Abraham Latham

www.art-dept.com

Art Department



Abraham Latham

www.art-dept.com

Art Department



Abraham Latham

www.art-dept.com

Art Department



Abraham Latham

www.art-dept.com

Art Department



Abraham Latham

www.art-dept.com

Art Department



Abraham Latham

www.art-dept.com

Art Department



Abraham Latham

www.art-dept.com

Art Department



Abraham Latham

www.art-dept.com

Art Department



Abraham Latham

www.art-dept.com

Art Department



Abraham Latham

www.art-dept.com

Art Department



AMERICAN EXPRESS

MATTHEW NEWBERRY
NEWBERRY ACOUSTICS

MEMBER SINCE 03

**IT'S IN-THE-KNOW
IN A CITY YOU DON'T.**

From secret souks to hidden tea rooms, wherever in the world business takes you, finding them is as easy as opening your Amex App. Another clever way American Express® has your back.

AMERICAN EXPRESS BUSINESS

MATTHEW NEWBERRY
NEWBERRY ACOUSTICS

AMERICAN EXPRESS *DON'T do business WITHOUT IT™*

Abraham Latham

www.art-dept.com

Art Department

**IT'S SECRET SMILES
TURNING BRUNCH
INTO MILES.**

Get lunch in with your Platinum Card® and enjoy a helping of Membership Rewards® points. Points that can then become flights or holidays. Another tasty way American Express® has your back.

AMERICAN EXPRESS

ALICA TOWNSEND

MEMBER SINCE '12

AMERICAN EXPRESS

DON'T *live life* WITHOUT IT™

The advertisement features a photograph of three women sitting at a round white table in an outdoor cafe setting, surrounded by lush greenery. They are engaged in conversation and eating. A white rectangular frame with a rough, torn-edge border is superimposed over the center of the image, containing a smaller photo of the same three women. The text 'AMERICAN EXPRESS' is printed at the top of this frame. Below the frame, the name 'ALICA TOWNSEND' is visible on the left and 'MEMBER SINCE '12' on the right. To the left of the women, a small image of an American Express Platinum Card is shown. In the bottom right corner, the American Express logo and the slogan 'DON'T live life WITHOUT IT™' are displayed.

Abraham Latham

www.art-dept.com

Art Department



The advertisement features a man, Kenneth Lee, sitting in a comfortable lounge chair, smiling and looking at his smartphone. He is wearing a maroon blazer and dark trousers. In the background, other people are blurred, suggesting a busy lounge environment. A small inset image shows a framed version of the same scene with the text "AMERICAN EXPRESS" at the top. To the right of the main image, the headline "IT'S FEELING AT HOME IN 1,000 LOUNGES." is displayed in large, bold, white letters. Below the headline, a paragraph of text reads: "Find a space to call your own in over 1,000 lounges in 500 airports worldwide with your Platinum Card®. Another welcoming way American Express® has your back." Below this text, two American Express cards are shown: a Business card and a Platinum Card. The Platinum Card features the Centurion logo and the name "KENNETH LEE". In the bottom right corner, the American Express logo is followed by the tagline "DON'T live life WITHOUT IT™".

AMERICAN EXPRESS

KENNETH LEE
MEMBER SINCE 12

IT'S FEELING AT HOME
IN 1,000 LOUNGES.

Find a space to call your own in over 1,000 lounges in
500 airports worldwide with your Platinum Card®.
Another welcoming way American Express® has your back.

AMERICAN EXPRESS
BUSINESS

AMERICAN EXPRESS
PLATINUM

KENNETH LEE

AMERICAN EXPRESS

DON'T *live life* WITHOUT IT™

Abraham Latham

www.art-dept.com

Art Department



Abraham Latham

www.art-dept.com

Art Department



**IT'S FREEWHEELING
FROM LUNCH
INTO EVENING.**

Leave no sight unseen with a guaranteed 4pm late checkout at over 1,000 Fine Hotels & Resorts worldwide with your Platinum Card®. Another leisurely way American Express® has your back.

AMERICAN EXPRESS

DANIEL MARTIN
MEMBER SINCE 03

AMERICAN EXPRESS
BUSINESS

AMERICAN EXPRESS
PLATINUM

DANIEL MARTIN

AMERICAN EXPRESS DON'T *live life* WITHOUT IT™

Abraham Latham

www.art-dept.com

Art Department



Abraham Latham

www.art-dept.com

Art Department



The advertisement features a collage of people at a concert. In the center, a woman in a green leather jacket is laughing, with a white circle highlighting her face. To her left, a man is smiling. In the background, other people are visible, some with their hands raised. The overall scene is lit with warm, bokeh lights, suggesting a night concert.

AMERICAN EXPRESS

IT'S OVER THE MOON WATCHING THE STARS.

From hot spots to sold out gigs, enjoy more memorable moments with American Express Experiences® and your Platinum Card®. Another breathtaking way American Express® has your back.

AMERICAN EXPRESS PLATINUM

TAYLOR GARRO
MEMBER SINCE 16

AMERICAN EXPRESS DON'T *live life* WITHOUT IT™

Abraham Latham

www.art-dept.com

Art Department

**IT'S FREEWHEELING
FROM LUNCH
INTO EVENING.**

Leave no sight unseen with a guaranteed 4pm late checkout at over 1,000 Fine Hotels & Resorts worldwide with your Platinum Card®. Another leisurely way American Express® has your back.

AMERICAN EXPRESS

AMERICAN EXPRESS BUSINESS

AMERICAN EXPRESS PLATINUM

DANIEL MARTIN
MEMBER SINCE 09

AMERICAN EXPRESS DON'T *live life* WITHOUT IT™

Abraham Latham

www.art-dept.com

Art Department



CAFE

DISTINCT BY DESIGN™

It's time appliances had a personality. Yours.

CAFEAPPLIANCES.COM

Abraham Latham

www.art-dept.com

Art Department



Abraham Latham

www.art-dept.com

Art Department



CAFÉ

DISTINCT BY DESIGN™

It's time appliances had a personality. Yours.

CAFEAPPLIANCES.COM

Abraham Latham

www.art-dept.com

Art Department



Abraham Latham

www.art-dept.com

Art Department



Abraham Latham

www.art-dept.com

Art Department



CAFE

DISTINCT BY DESIGN™

It's time appliances had a personality. Yours.

CAFEAPPLIANCES.COM

Abraham Latham

www.art-dept.com

Art Department



Abraham Latham

www.art-dept.com

Art Department



CAFE

DISTINCT BY DESIGN™

It's time appliances had a personality. Yours.

CAFEAPPLIANCES.COM

Abraham Latham

www.art-dept.com

Art Department



Abraham Latham

www.art-dept.com

Art Department



CAFE

DISTINCT BY DESIGN

It's time appliances had a personality. Yours.

CAFEAPPLIANCES.COM

Abraham Latham

www.art-dept.com

Art Department



CAFE

DISTINCT BY DESIGN™

It's time appliances had a personality. Yours.

CAFEAPPLIANCES.COM

Abraham Latham

www.art-dept.com

Art Department



Abraham Latham

www.art-dept.com

Art Department



Abraham Latham

www.art-dept.com

Art Department



Abraham Latham

www.art-dept.com

Art Department



Abraham Latham

www.art-dept.com

Art Department



Abraham Latham

www.art-dept.com

Art Department



Abraham Latham

www.art-dept.com

Art Department



Abraham Latham

www.art-dept.com

Art Department



Abraham Latham

www.art-dept.com

Art Department



Abraham Latham

www.art-dept.com

Art Department



Abraham Latham

www.art-dept.com

Art Department



Abraham Latham

www.art-dept.com

Art Department



Abraham Latham

www.art-dept.com

Art Department



Abraham Latham

www.art-dept.com

Art Department



Abraham Latham

www.art-dept.com

Art Department



Abraham Latham

www.art-dept.com

Art Department



Abraham Latham

www.art-dept.com

Art Department



Abraham Latham

www.art-dept.com

Art Department

AMERICAN EXPRESS

**DON'T
TURN YOUR
VENTURE INTO
AN ADVENTURE
WITHOUT IT.**

ALIA COHAN
GLASSOCTOPUS

MEMBER SINCE 14

AMERICAN EXPRESS *DON'T do business WITHOUT IT™*

The advertisement shows a man in a purple shirt and glasses sitting at a desk, looking at a laptop. A woman in a blue patterned shirt is sitting next to him, smiling and pointing at the laptop screen. Another woman in a white and yellow striped shirt is standing behind the laptop. The background is a modern office with a large potted plant and a colorful abstract painting.

Abraham Latham

www.art-dept.com

Art Department



Abraham Latham

www.art-dept.com

Art Department



Abraham Latham

www.art-dept.com

Art Department



Abraham Latham

www.art-dept.com

Art Department



Abraham Latham

www.art-dept.com

Art Department



Abraham Latham

www.art-dept.com

Art Department



Abraham Latham

www.art-dept.com

Art Department



Abraham Latham

www.art-dept.com

Art Department



Abraham Latham

www.art-dept.com

Art Department



Abraham Latham

www.art-dept.com

Art Department



Abraham Latham

www.art-dept.com

Art Department



Abraham Latham

www.art-dept.com

Art Department



Abraham Latham

www.art-dept.com

Art Department



Abraham Latham

www.art-dept.com

www.art-dept.com

Art Department



Abraham Latham

www.art-dept.com

Art Department

A photograph of a man with curly hair and a beard, wearing a black t-shirt, sitting at a red table and eating a pie with berries. He is holding a fork and looking down at the food. In the background, there is a brick wall and a stack of vinyl records. A red square with the letters 'GH' is in the top right corner of the photo.

© GrubHub 2014

GH

**MMM, JUST LIKE
MOM USED TO ORDER.**

GRUBHUB™
YOUR FOOD HAS ARRIVED

Abraham Latham

www.art-dept.com

Art Department



Abraham Latham

www.art-dept.com

Art Department

A close-up photograph of a person's arm and hand wearing a Samsung Gear S3 frontier smartwatch with a red strap. The person is holding a white paddle with a yellow blade, splashing in turquoise water. The watch face is black with blue and white details. The background is slightly blurred, showing the person's dark clothing and the water's surface.

SAMSUNG

Gear S3 frontier

Timeless outside. Revolutionary inside.
Built-in speaker • Stand-alone GPS • Water resistant • Altimeter & Barometer

• Orange red watch band sold separately
• Water-resistant (IP68; tested in up to 15 meters of fresh water for up to 30 minutes)

Abraham Latham

www.art-dept.com

Art Department



Abraham Latham

www.art-dept.com

Art Department



Abraham Latham

www.art-dept.com

Art Department



Abraham Latham

www.art-dept.com

Art Department



Abraham Latham

www.art-dept.com

Art Department



Abraham Latham

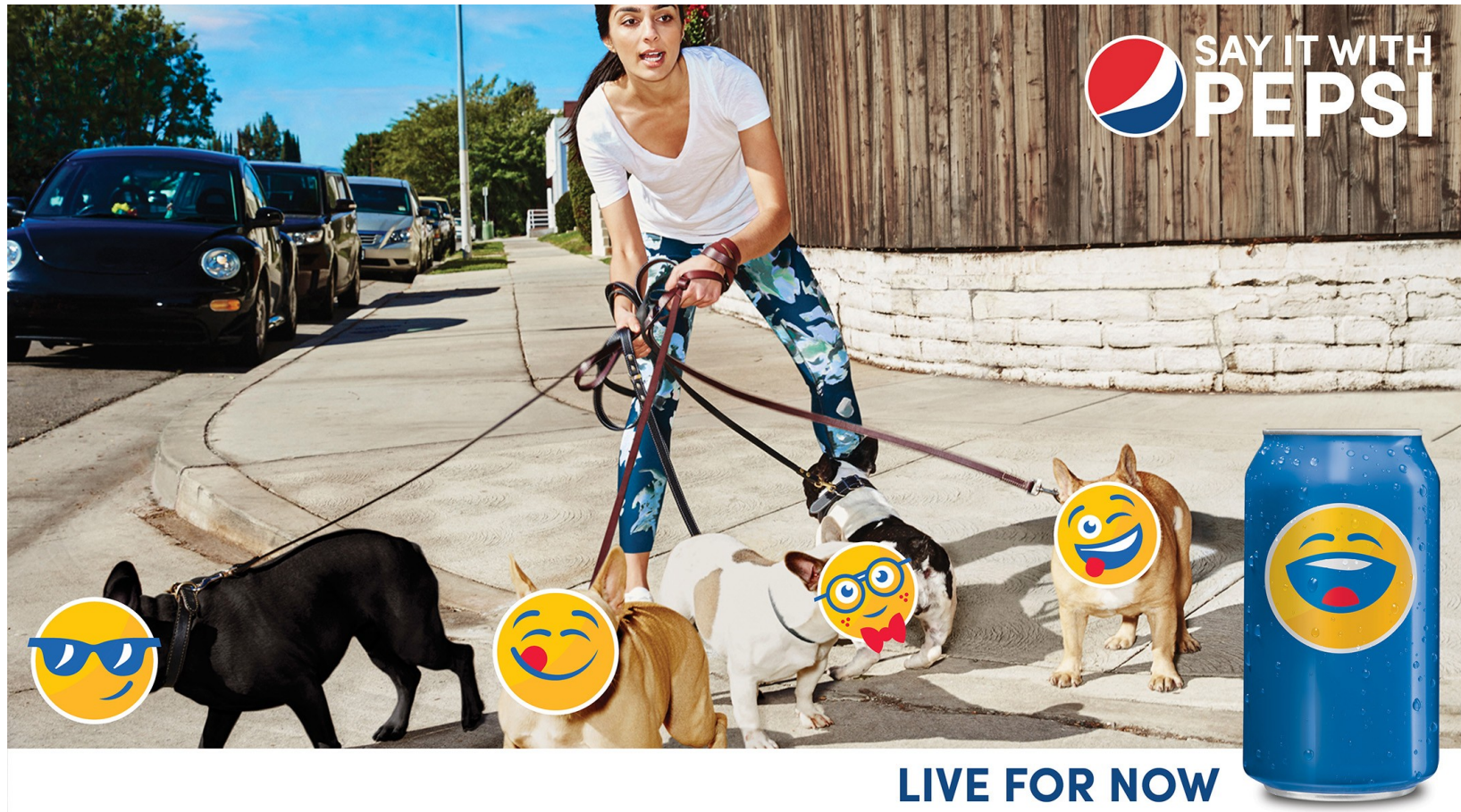
www.art-dept.com

Art Department



Abraham Latham

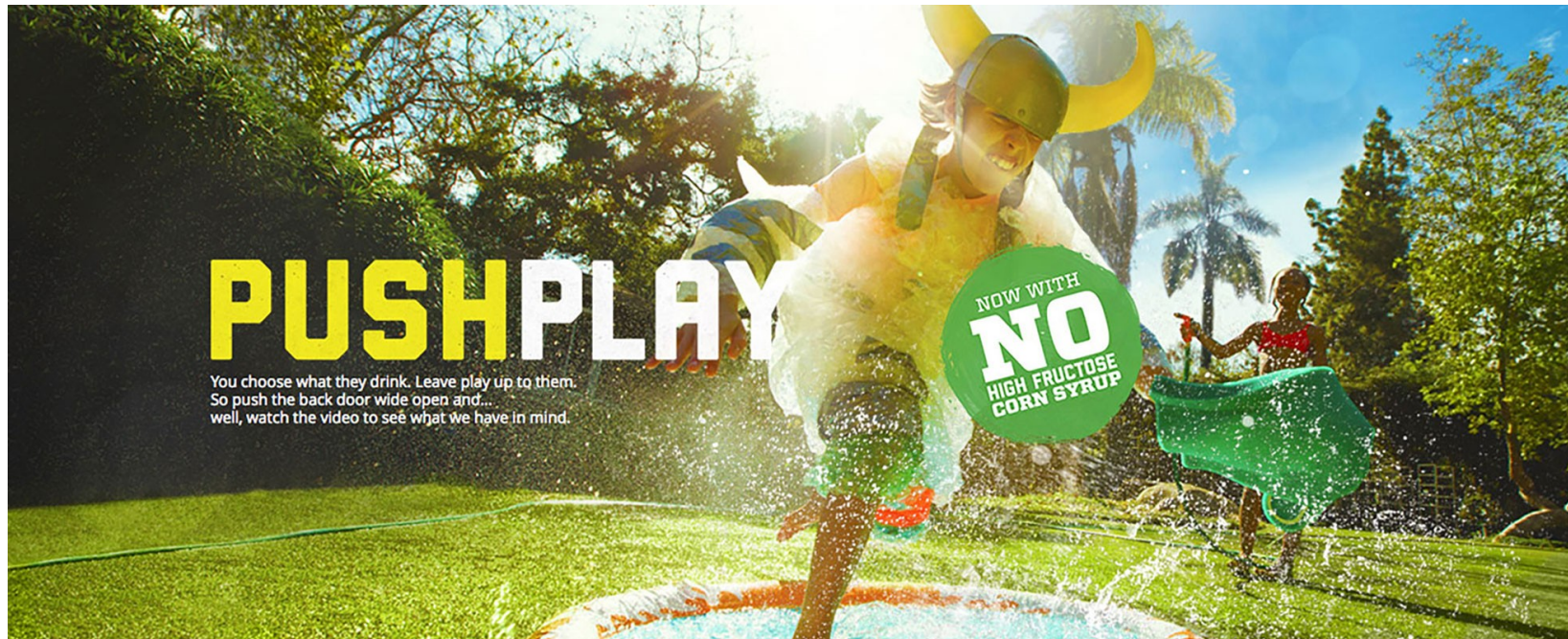
Art Department



Abraham Latham

www.art-dept.com

Art Department



Abraham Latham

www.art-dept.com

Art Department



Abraham Latham

Art Department



Abraham Latham

Art Department



Abraham Latham

www.art-dept.com

Art Department



Abraham Latham

www.art-dept.com

Art Department

SUN VALLEY PARKA.
650 FILL PREMIUM DOWN.
TEMPERATURE RATED TO -30°F.
FROM EDDIE BAUER,
THE INVENTOR OF THE DOWN JACKET.

Eddie Bauer
LIVE YOUR ADVENTURE®



TEMPERATURE RATINGS ARE BASED ON A CONTROLLED LABORATORY TEST, USING LOW TO MODERATE ACTIVITY LEVELS. THE SUN VALLEY MARKA RATED FROM 30° (LOW ACTIVITY) TO -30° (MOD. ACTIVITY), ALSO CONSIDER YOUR SENSITIVITY TO COLD AND NO-DRILL TIME OF EXPOSURE ACTIVITY LEVEL AND USE OF LUBRIC.

Abraham Latham

www.art-dept.com

Art Department



Abraham Latham

www.art-dept.com

Art Department



Abraham Latham

www.art-dept.com

Art Department



Abraham Latham

www.art-dept.com

Art Department



Abraham Latham

www.art-dept.com

Art Department



Abraham Latham

www.art-dept.com

Art Department



Abraham Latham

www.art-dept.com

Art Department



Abraham Latham

www.art-dept.com

Art Department



Abraham Latham

www.art-dept.com

Art Department



Abraham Latham

www.art-dept.com

Art Department



Abraham Latham

www.art-dept.com

Art Department



Abraham Latham

www.art-dept.com

Art Department



Abraham Latham

www.art-dept.com

Art Department



Abraham Latham

www.art-dept.com

Art Department



Abraham Latham

www.art-dept.com

Art Department



Abraham Latham

www.art-dept.com

Art Department



Abraham Latham

www.art-dept.com

Art Department



Abraham Latham

www.art-dept.com

Art Department



Abraham Latham

www.art-dept.com

Art Department



#hellowork

Snooze no more.

When work is something you look forward to, the alarm clock gets a whole lot friendlier. Because when your employees look forward to their jobs, what they produce can be truly inspiring. ADP's workforce solutions help you craft a more engaged and efficient workplace.

Visit adp.com/hellowork and see how we can provide a more human resource for your business.

ADP and the ADP logo are registered trademarks of ADP, LLC.
ADP – A more human resource. is a service mark of ADP, LLC. Copyright © 2015 ADP, LLC.

ADP
A more human resource.™

HR Solutions | Payroll | Good Job

Abraham Latham

www.art-dept.com

Art Department



#hellowork

There's nothing like the smell of compliance in the morning.

Even before that first pot of caffeinated goodness, we've got tax and ACA regulation on the brain. Because at ADP, we're always looking for new ways to pair innovative technology and human expertise to help you navigate risks associated with compliance. That way you can start your day by focusing on what's important – whole milk or skim.

Visit adp.com/hellowork and see how we can provide a more human resource for your business.

ADP and the ADP logo are registered trademarks of ADP, LLC.
ADP – A more human resource. is a service mark of ADP, LLC. Copyright © 2015 ADP, LLC.

ADP
A more human resource.™

HR Solutions | Payroll | Good Job

Abraham Latham

www.art-dept.com

Art Department



Abraham Latham

www.art-dept.com

Art Department

The advertisement features a woman with dark hair, seen from the back, sitting at a restaurant table. She is holding a Samsung Galaxy Tab Pro tablet. The screen displays a news article about city events, a calendar for February 2014, and an inbox with several emails. A vase of colorful flowers and a bowl of fruit are on the table. The background is a blurred restaurant interior.

SAMSUNG

THE NEXT

BIG

THING

IS HERE™

GALAXY Tab PRO

BEST BUY

Abraham Latham

www.art-dept.com

Art Department



Abraham Latham

www.art-dept.com

Art Department



Abraham Latham

www.art-dept.com

Art Department



Abraham Latham

www.art-dept.com

Art Department



Abraham Latham

www.art-dept.com

Art Department



Abraham Latham

www.art-dept.com

Art Department



★ *Camp out on the beach*

Abraham Latham

www.art-dept.com

Art Department



★ *Sample the local delicacies*

Abraham Latham

www.art-dept.com

Art Department



★ *Mix with the locals*

Abraham Latham

www.art-dept.com

Art Department

★ *Learn to surf*



Abraham Latham

www.art-dept.com

Art Department



Abraham Latham

www.art-dept.com

Art Department



Abraham Latham

www.art-dept.com

Art Department



Abraham Latham

www.art-dept.com

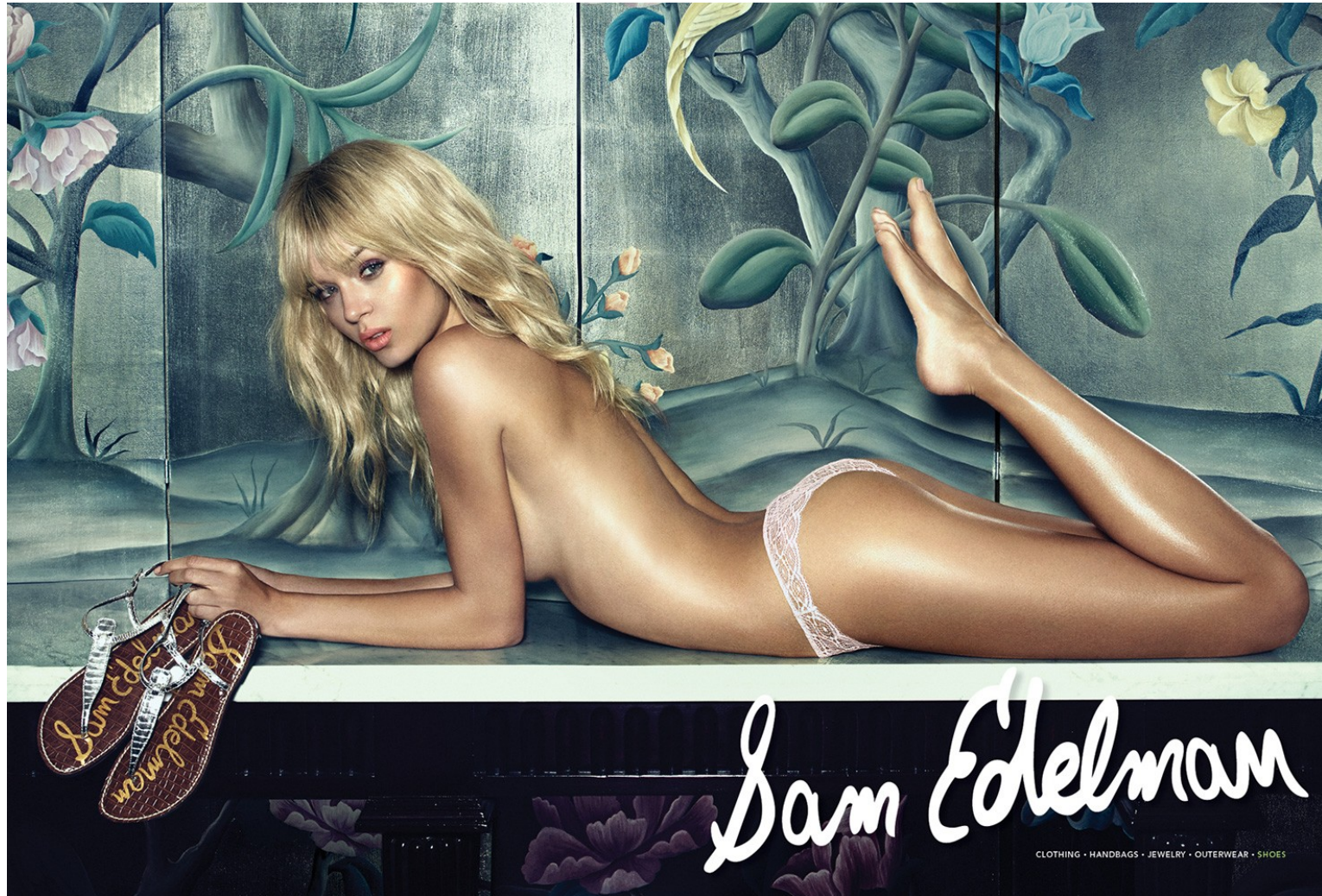
Art Department



Abraham Latham

www.art-dept.com

Art Department



Abraham Latham

www.art-dept.com

Art Department



Abraham Latham

www.art-dept.com

Art Department



Abraham Latham

www.art-dept.com

Art Department



Abraham Latham

www.art-dept.com

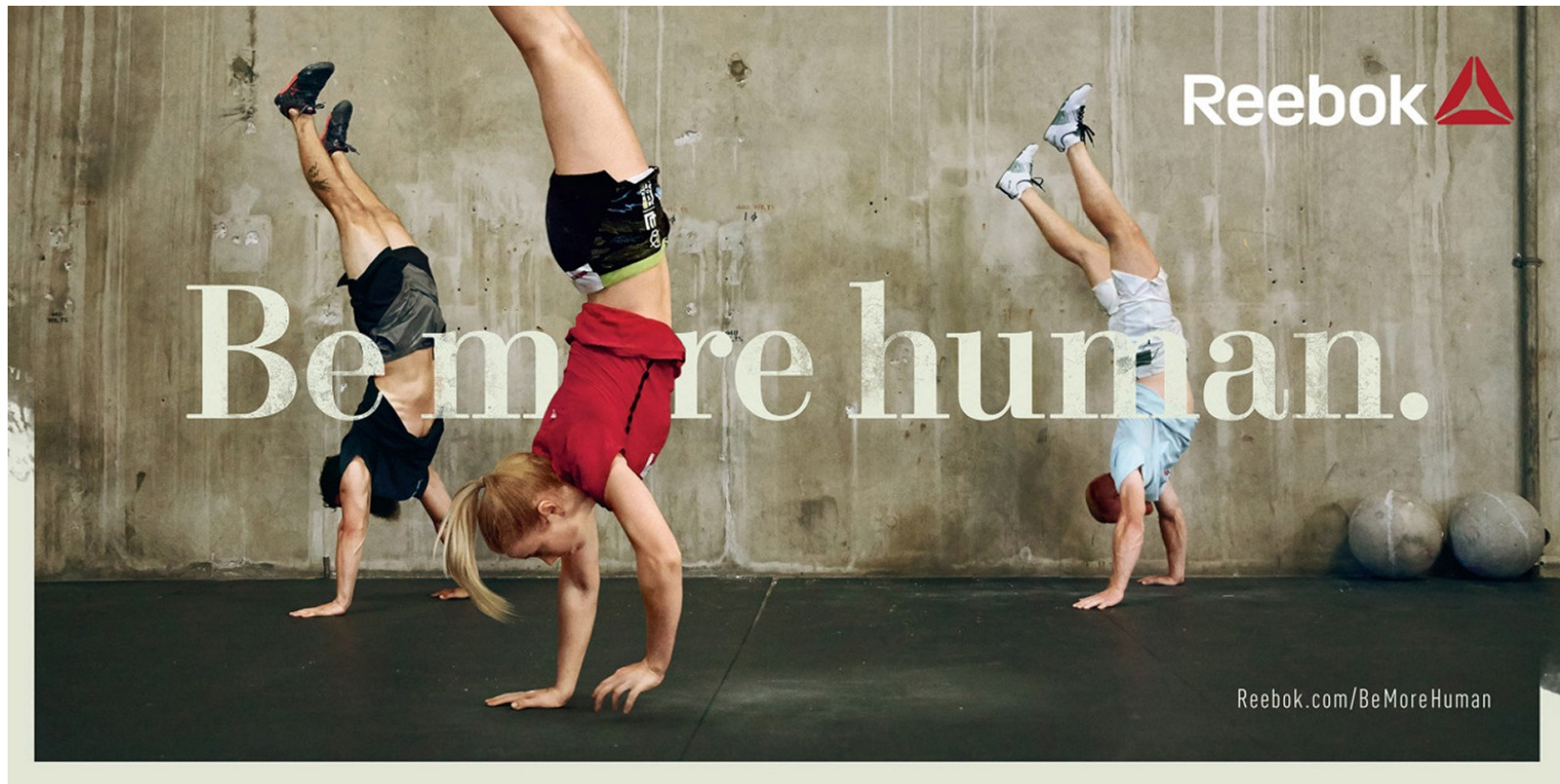
Art Department



Abraham Latham

www.art-dept.com

Art Department



Abraham Latham

www.art-dept.com

Art Department



Abraham Latham

www.art-dept.com

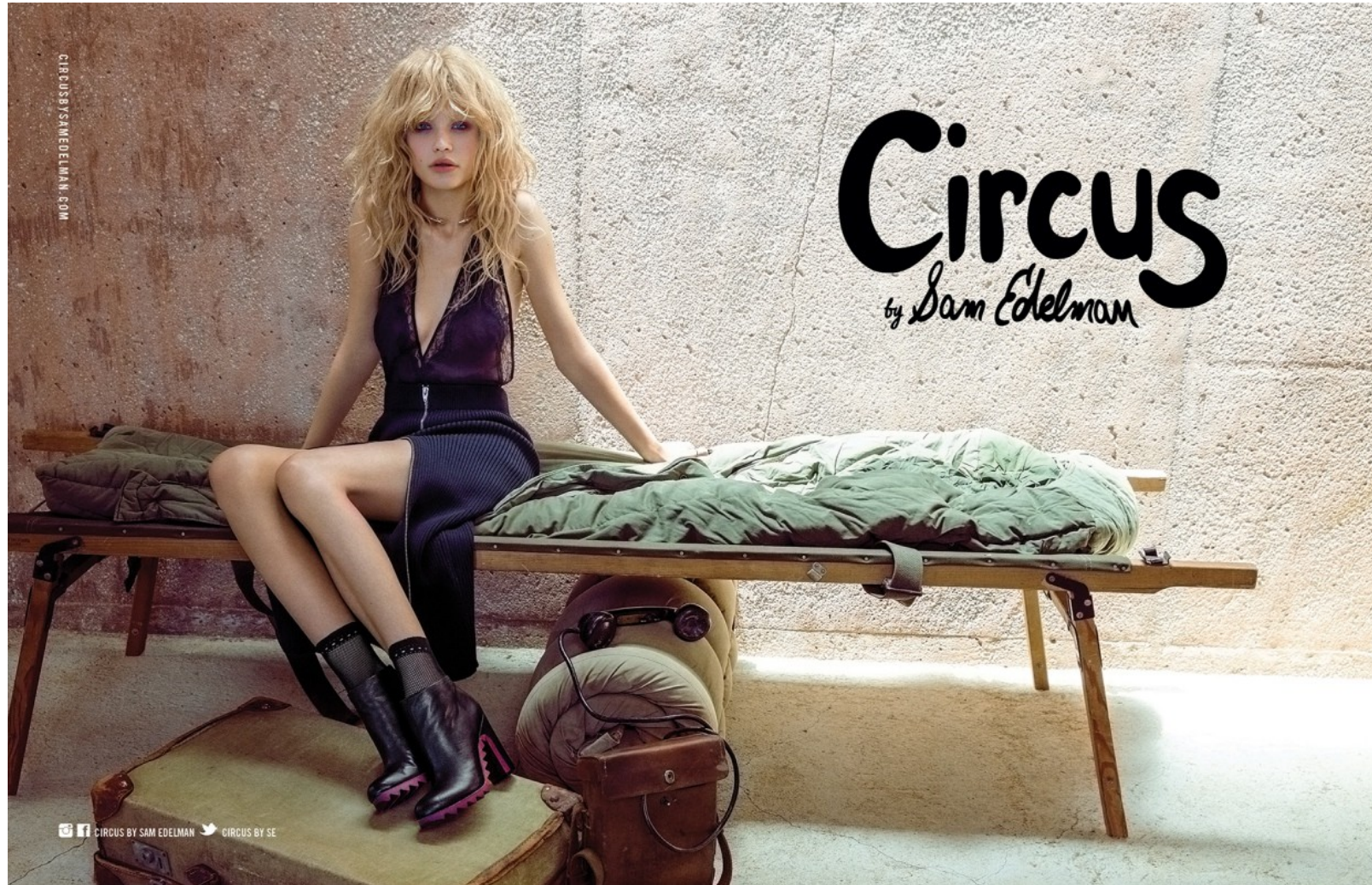
Art Department



Abraham Latham

www.art-dept.com

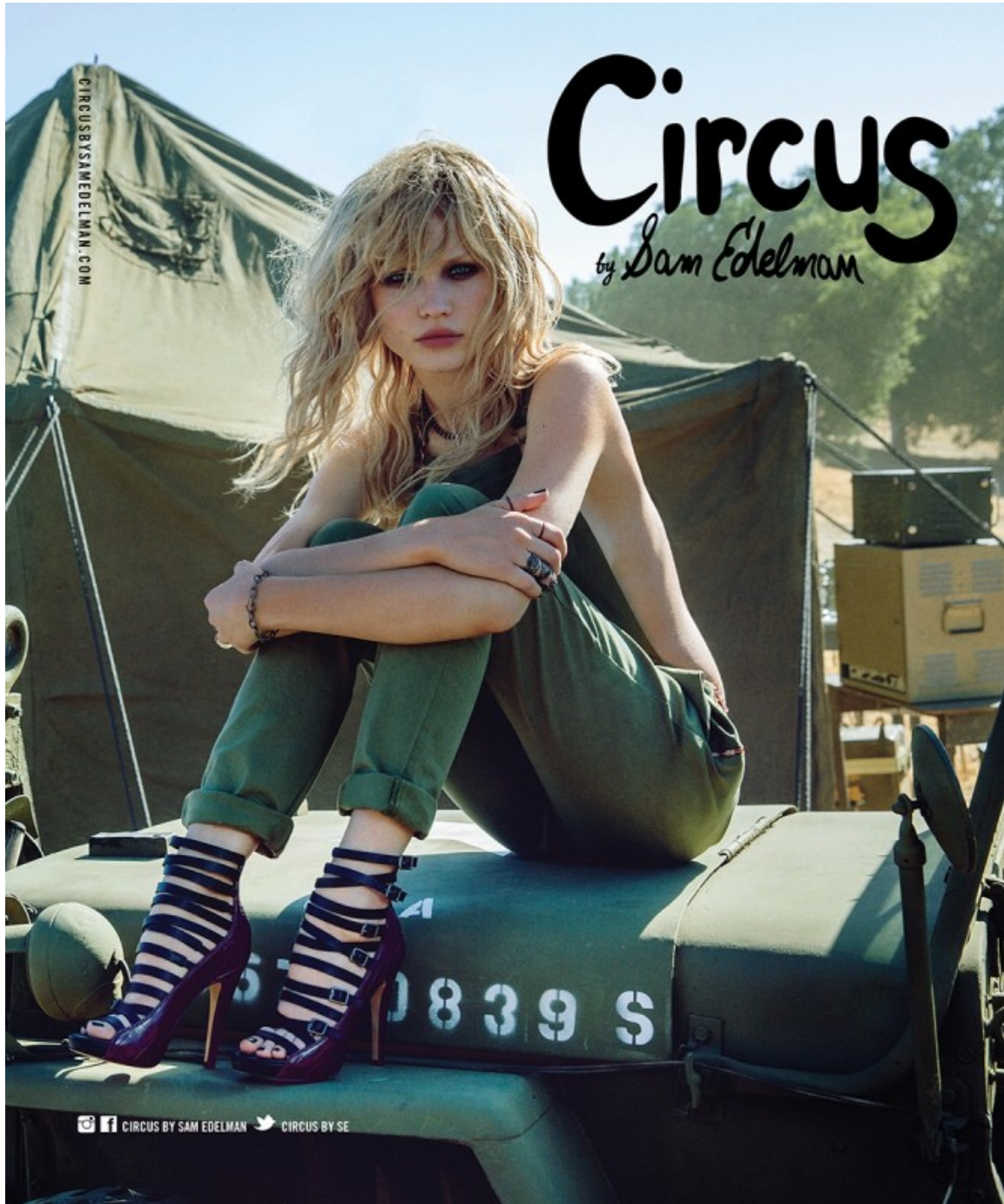
Art Department



Abraham Latham

www.art-dept.com

Art Department



Abraham Latham

www.art-dept.com

Art Department



Abraham Latham

www.art-dept.com

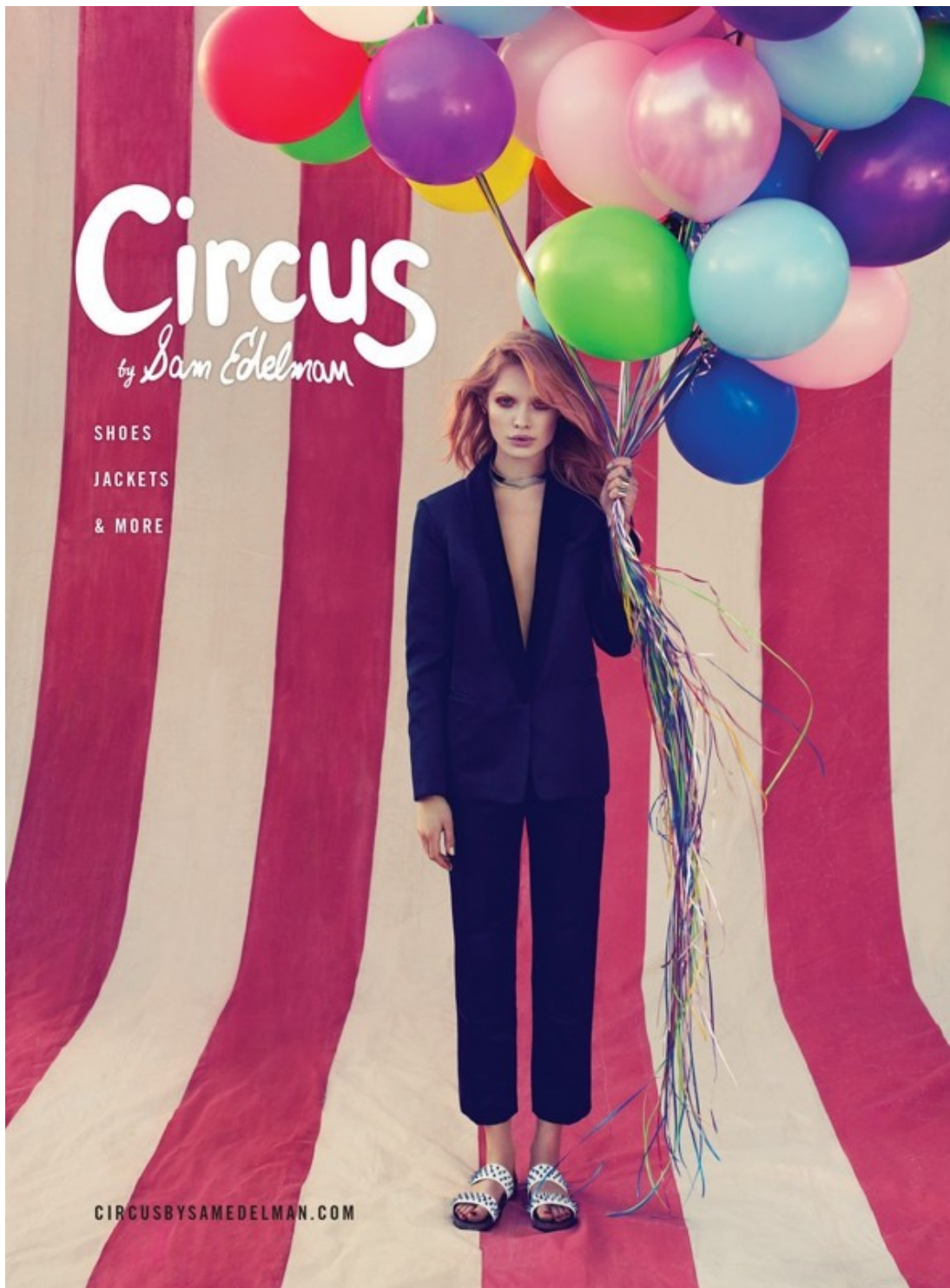
Art Department



Abraham Latham

www.art-dept.com

Art Department



Abraham Latham

www.art-dept.com

Art Department



Abraham Latham

www.art-dept.com

Art Department



A photograph of Taylor Swift sitting on a large stack of colorful, multi-colored speakers (red, yellow, green, blue). She is wearing a light blue button-down shirt, denim shorts, and red Keds sneakers. She is holding a pair of sunglasses in her left hand. The background is a bright, sunny outdoor setting.

Taylor Swift

soak up
**EVERY
MOMENT**

WORDS TO LOVE BY @GLGROSSI.
SHARE WHAT'S IN YOUR HEART AT
[KEDS.COM/BRAVEHEARTS](https://www.keds.com/bravehearts).

Keds®

AVAILABLE AT JOURNEYS

Abraham Latham

www.art-dept.com

Art Department

NO. 0013 Taylor Swift

find the
SUNSHINE

WORDS TO LOVE BY @TAYLORWRITING
SHARE WHAT'S IN YOUR HEART AT
KEDS.COM/BRAVEHEARTS

Keds®

AVAILABLE AT NORDSTROM

The advertisement features a large, vibrant painting of a sun with a face, wearing a striped shirt and black shorts, standing on a grassy field. The sun's rays are painted in a textured, brushstroke style. To the left of the main image is a vertical collage of four smaller photos: a person doing a handstand against a city skyline, a close-up of various colorful sneakers, a person jumping in the air, and two people wearing sunglasses. The Keds logo is in the bottom left, and the text 'AVAILABLE AT NORDSTROM' is in the bottom right.

Abraham Latham

www.art-dept.com

Art Department



Abraham Latham

www.art-dept.com

Art Department



Abraham Latham

www.art-dept.com

Art Department



Abraham Latham

www.art-dept.com

Art Department



Abraham Latham

www.art-dept.com

Art Department



Abraham Latham

www.art-dept.com

Art Department



Abraham Latham

www.art-dept.com

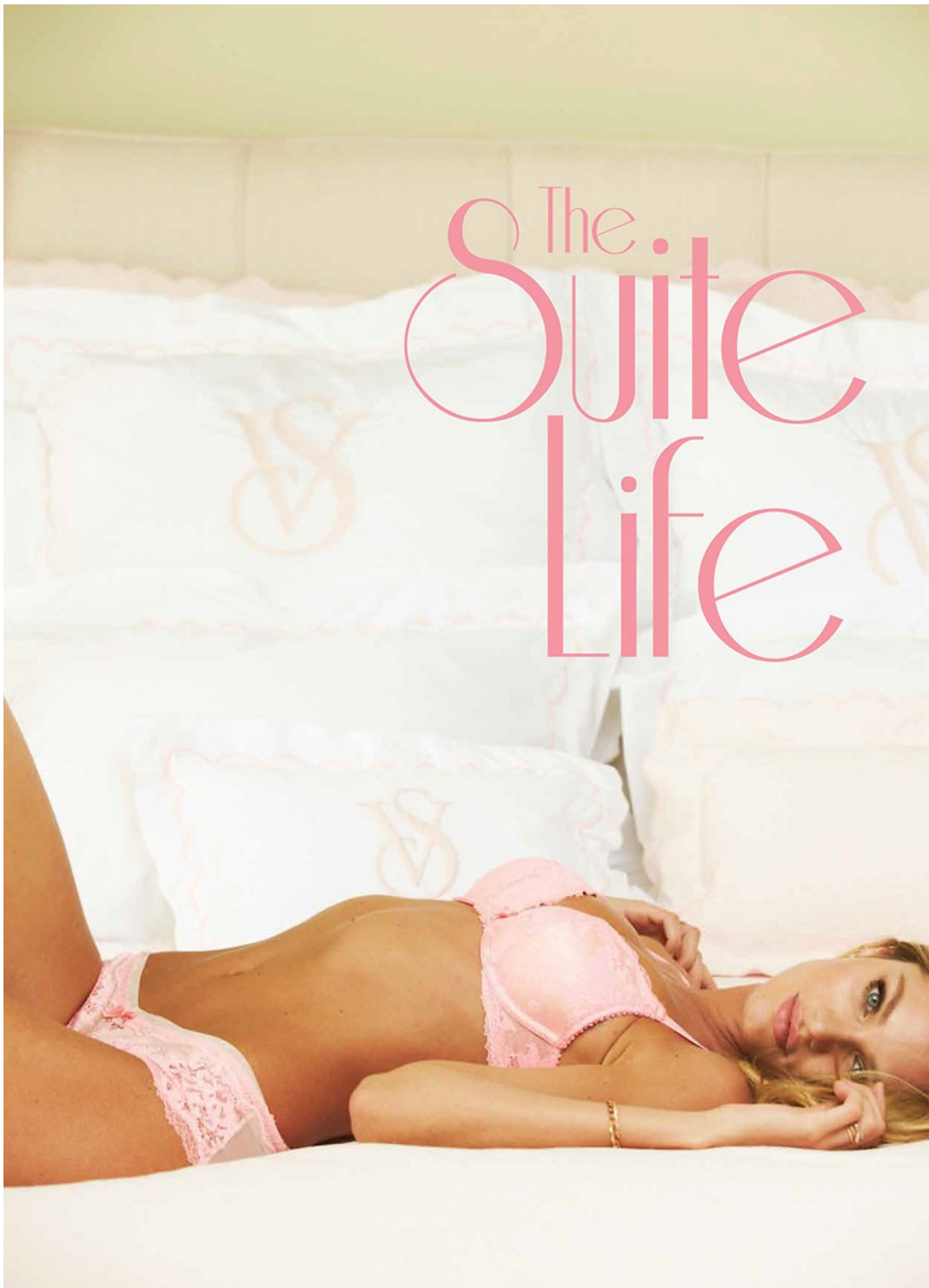
Art Department



Abraham Latham

www.art-dept.com

Art Department



Abraham Latham

www.art-dept.com

Art Department



Abraham Latham

www.art-dept.com

Art Department



Abraham Latham

www.art-dept.com

Art Department



Abraham Latham

www.art-dept.com

Art Department



BONOBOS SUITS
Lighten Up

Summer is made for bold statements, but it's also hot as the dickens. When it comes to suits, the answer is light, breathable fabrics that can keep their cool in the heat. To get your wardrobe ready, we have options in seersucker, lightweight Italian wool, cotton twill, and yes, even cotton linen – check out the Tremont suit on the front cover.

Left to Right: SUITS: The Drayton - Navy, Loro Piana wool, \$920. Jacket \$425, pants \$295, available separately. Guideshop exclusive. SHIRT: Gentleman Collar, see page 2. TIE: Wellfleet - Pink, 100% silk, \$48. / SUIT: The Beauregard - Blue, see page 6. SHIRT: Fall River, see page 6. TIE: Rodanthe Bowtie - Green, 100% cotton, \$58. SHOES: Grenson Tyler - Brown, calf leather, \$345. / SUIT: The Beauregard - White, see page 6. SHIRT: Rhodes Collar - Turquoise, 100% cotton Oxford, \$78. Available in Slim & Standard FIT. TIE: Duxbury - Navy, silk twill, \$48. SHOE: Grenson x Bonobos Spectator - Brown, suede & leather, \$495.

On the Cover: SUIT: The Tremont - Grey, cotton linen, \$448. Jacket \$298, pants \$150, available separately. Also available in Stone & Navy. SHIRT: Gingham, Summer Weight - Blue, 100% cotton poplin, \$78. Available in Slim & Standard FIT. POKET SQUARE: The Madison Square - Purple, 100% linen, \$32. SHOES: Tretorn Nylite - White, canvas, \$40.

Abraham Latham

www.art-dept.com

Art Department



SUIT: The Fairfax - Grey, 100% cotton, \$425. Jacket \$275, pants \$150, available separately. Also available in Khaki & Navy. SHIRT: J. Hancock, Summer Weight, 100% cotton poplin, \$78. Available in Slim & Standard Fit. POCKET SQUARE: Madison Square - Blue, 100% linen, \$32. BELT: Stretto - Black, leather, \$90. SHOES: Grenson Ellery Double Monk Brogue - Black, leather, \$370.

Opposite Page: SUIT: The Fairfax - Khaki, see above. SHIRT: Ging Richard, Green, 100% cotton poplin, \$78. Available in Slim & Standard Fit. TIE: Wolfboro Bowtie - Blue, 100% cotton chambray, \$58. POCKET SQUARE: The Anchor Chief, 100% cotton, \$42.

Abraham Latham

www.art-dept.com

Art Department



Abraham Latham

www.art-dept.com

Art Department



**SUMMER
BETTER
than
THE REST**

It's pretty much an indisputable scientific fact: most of life's best moments happen during summer. And we want you to look your best for every single one of them. So let us take care of the style part – the linen suits, the summer weight shirts, the new jeans you'll practically live in. You've got other things to worry about. Because that rooftop rager isn't going to DJ itself. Somebody's got to go black-tie to Shakespeare in the Park. And world-class cannonball champions aren't born. They're made.

On the Cover: SUIT: The Tremont - Grey, cotton linen, \$448. Jacket \$198, pants \$156, available separately. Also available in Stone & Navy. SHIRT: Gingham, Summer Weight - Blue, 100% cotton poplin, \$78. Available in Slim & Standard Fit. POCKET SQUARE: The Madison Square - Purple, 100% linen, \$32. SHOES: Tretorn Nylite - White, canvas, \$48.

This Page, Left to Right: See page 8. / See page 12.

2 | 877.296.7737

BONOBOS.COM / 3

Abraham Latham

www.art-dept.com

Art Department

The Foundation Suit
Cut to perfection from lightweight Italian wool, this suit is sharp as a razor and comes in equally handy. It's the solid, year-round suit every guy needs at the ready for work and for play.

SUIT: The Foundation - Navy, see page 8.
SHIRT: Gentleman Collar - Blue & White Bengal Stripe, 100% Italian cotton, \$138. Available in Slim & Standard Fit. Neck & sleeve sizing.
TIE: Wolfeboro - Blue, 100% cotton chambray, \$68.
TIE CLIP: Postmodern Tie Clip - Blue, acrylic, \$25.

A man with curly brown hair and a light beard is smiling at the camera. He is wearing a dark navy blue suit jacket over a light blue and white striped dress shirt and a blue chambray tie. A blue tie clip is visible on his tie. He is holding a white cloth in his left hand. The background is a barbershop with a yellow car and a barber's chair visible.

Abraham Latham

www.art-dept.com

Art Department



The Foundation Suit

SUIT: The Foundation - Light Grey, 100% Marzotto® Italian wool, \$685. Jacket \$460, pants \$225, available separately. Also available in Charcoal & Navy. SHIRT: Gentleman Collar - White, 100% Italian cotton, \$138. Available in Slim & Standard Fit. Neck & sleeve sizing. TIE: Cape Hatteras - Blue, 100% cotton, \$68. SHOE: Grenson Tyler - Brown, leather, \$345. POCKET SQUARE: Bedford Square - Green, 100% cotton, \$32.

Opposite Page: SUIT: The Foundation - Navy, see above. SHIRT: Gentleman Collar - Turquoise Gingham, 100% Italian cotton, \$138. Available in Slim & Standard Fit. Neck & sleeve sizing. TIE: Cape May - Navy, cotton silk blend, \$78. TIE CLIP: Postmodern Tie Clip - Red, acrylic, \$25. BELT: Fifth Degree - Black, Italian leather, \$98. SHOES: Grenson Dylan Wing Tip - Black, leather, \$335.

Try this on at a
Guideshop
bonobos.com/guideshop

Abraham Latham

www.art-dept.com

Art Department

The Fairfax Suit

To beat the heat on a daily basis, you have two options: tons of soft serve, or a cotton twill suit. We suggest the latter – it's casual enough for everyday wear, but still dressy enough for special occasions. Oh, and it won't melt on your shoes either.



Abraham Latham

www.art-dept.com

Art Department



Abraham Latham

www.art-dept.com

Art Department



Abraham Latham

www.art-dept.com

Art Department



Abraham Latham

www.art-dept.com

Art Department



Abraham Latham

www.art-dept.com

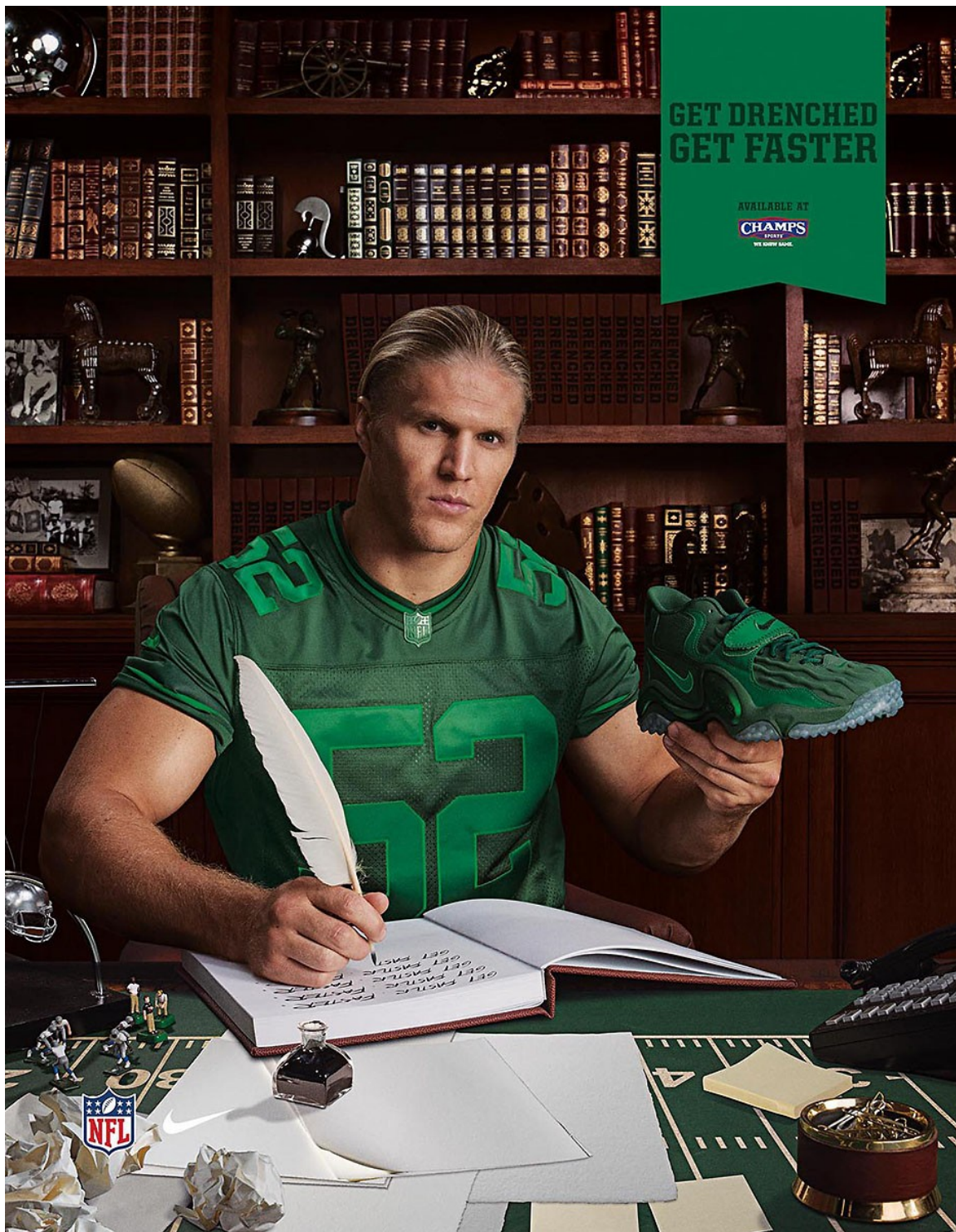
Art Department



Abraham Latham

www.art-dept.com

Art Department



Abraham Latham

www.art-dept.com

Art Department



The sea is my land.

Abraham Latham

www.art-dept.com

Art Department



The sea is my land.

Abraham Latham

www.art-dept.com

Art Department



Abraham Latham

www.art-dept.com

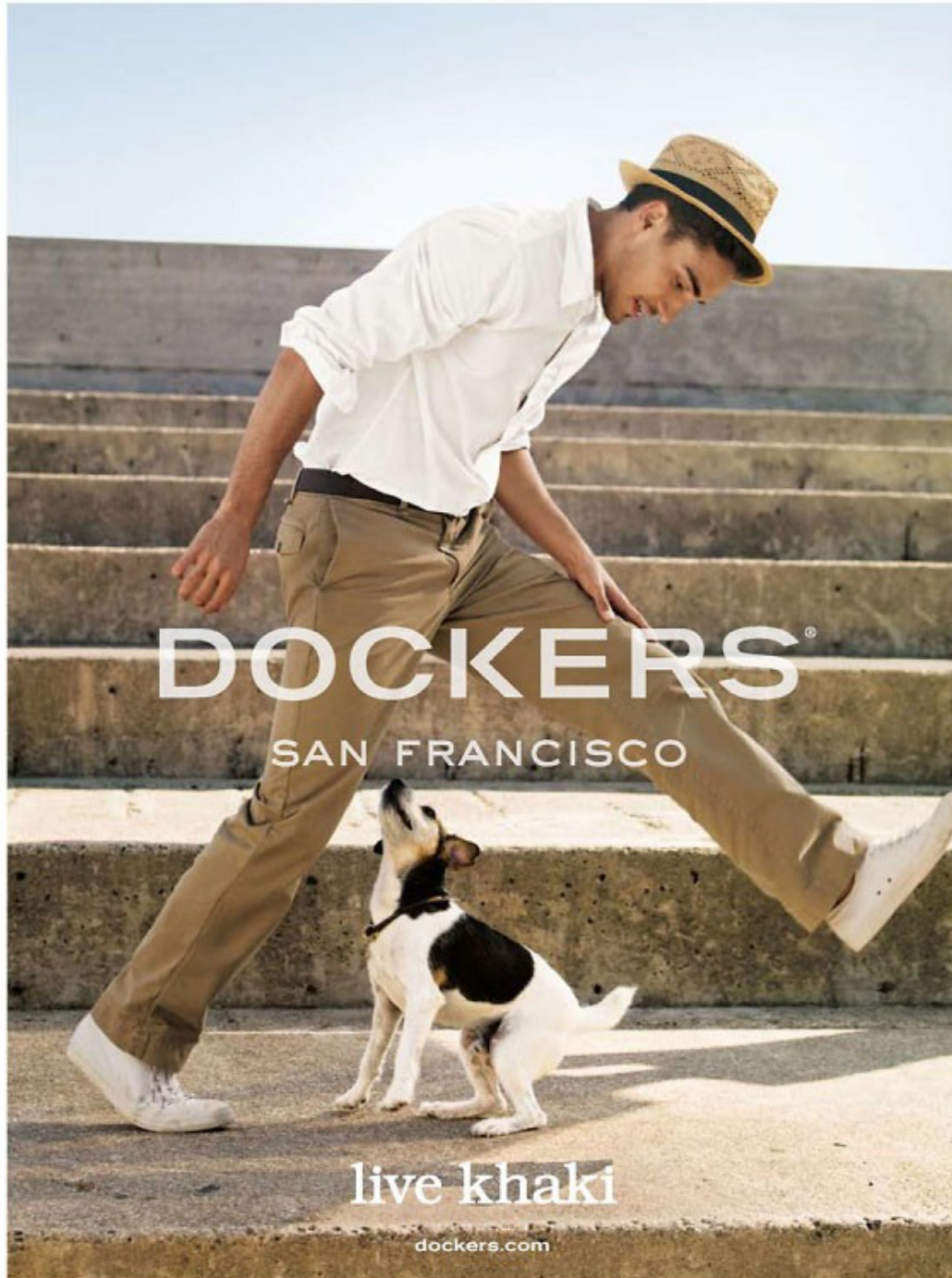
Art Department



Abraham Latham

www.art-dept.com

Art Department



Abraham Latham

www.art-dept.com

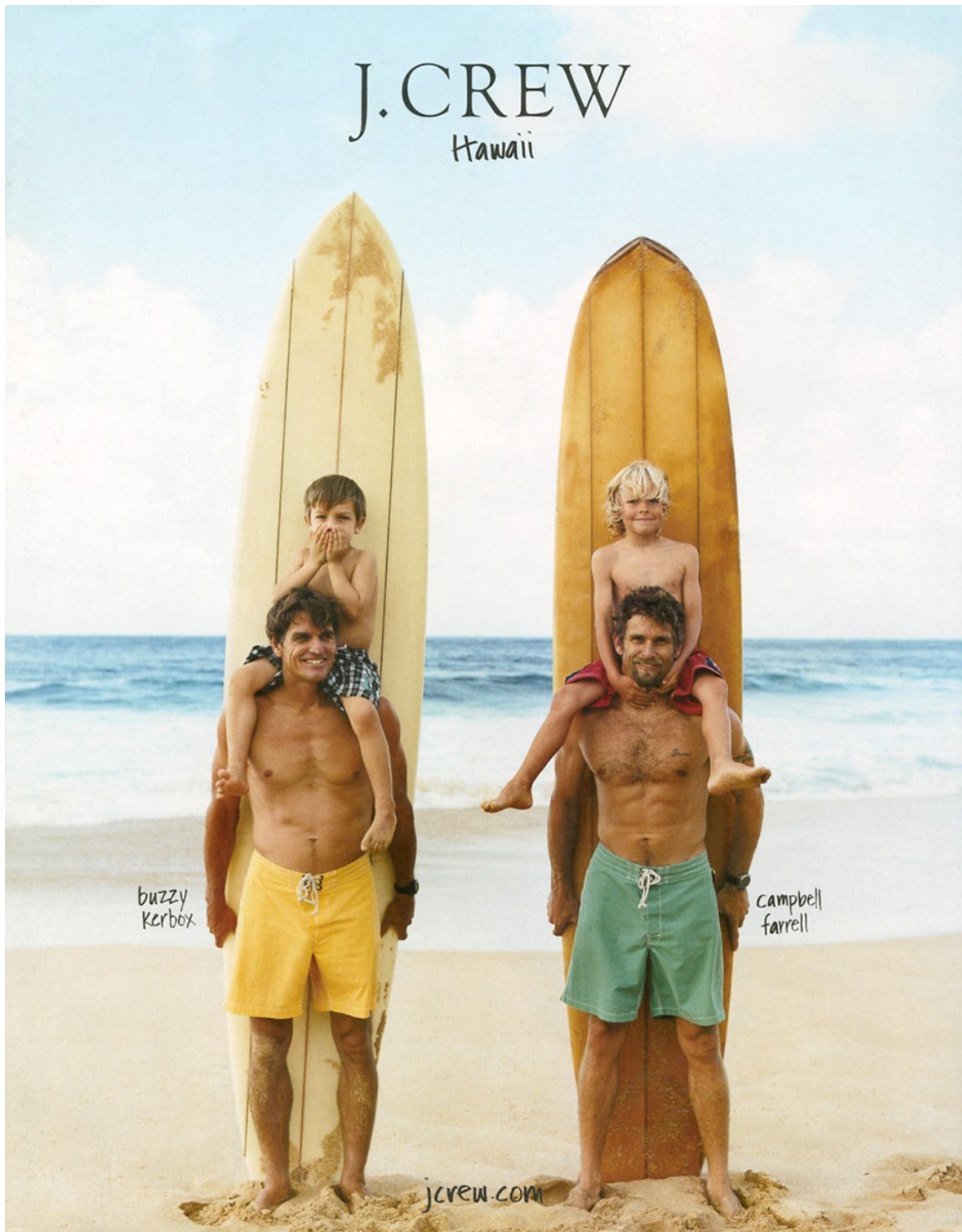
Art Department



Abraham Latham

www.art-dept.com

Art Department



Abraham Latham

www.art-dept.com

Art Department



Abraham Latham

www.art-dept.com

BLUE HAWAII
MANGO - PASSION
STRAWBERRY - LI HING HUI
BANANA - PINACOLADA
WATERMELON
PINEAPPLE
CHERRY
RAINBOW \$4.00
3 FLAVORS
w/ Sweet Cream w/ 50%

ROXY

[SPRING / SUMMER 07]

X
R
Y

ROXY
RX

www.art-dept.com

Art Department



Abraham Latham

www.art-dept.com

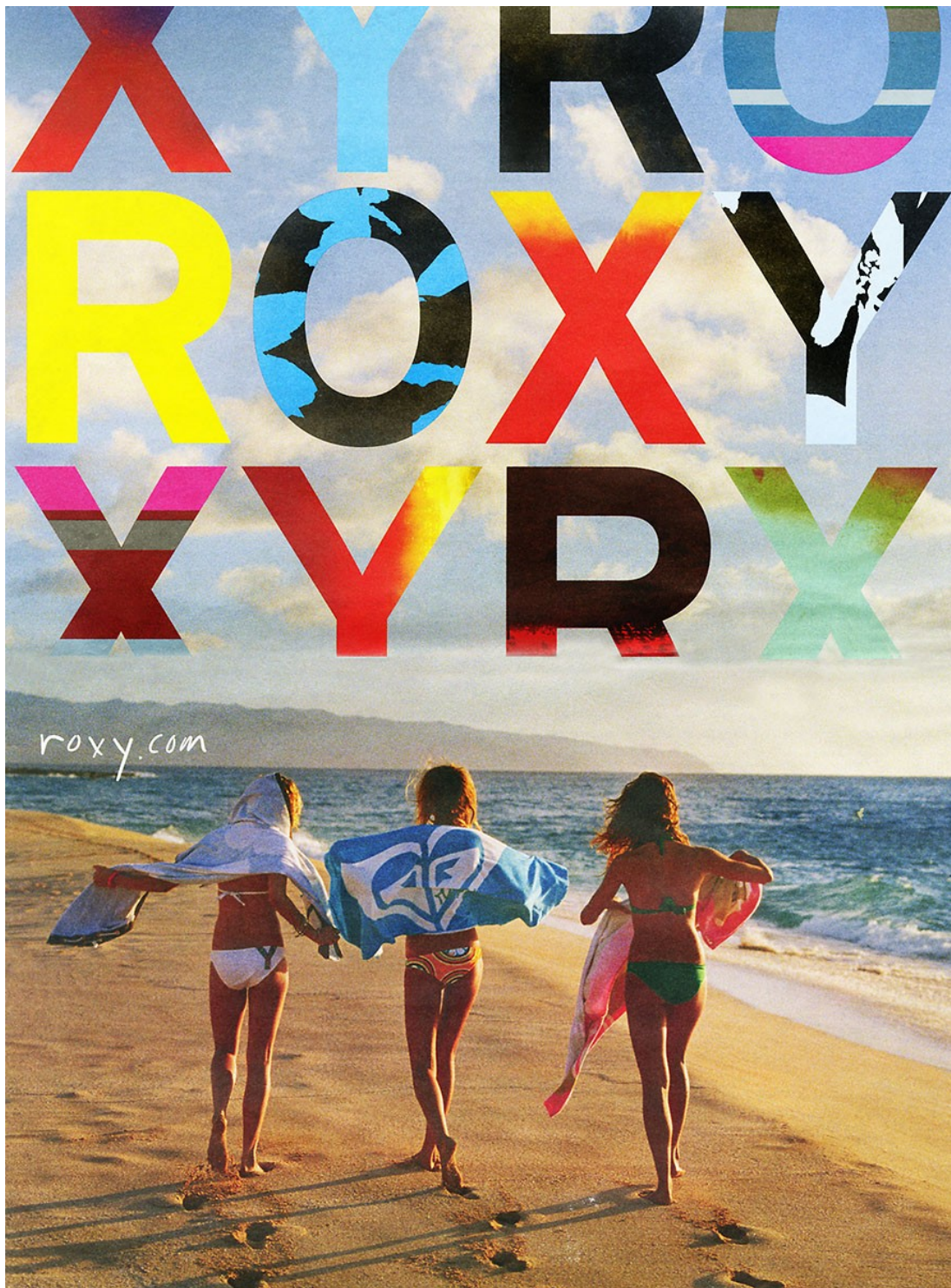
Art Department



Abraham Latham

www.art-dept.com

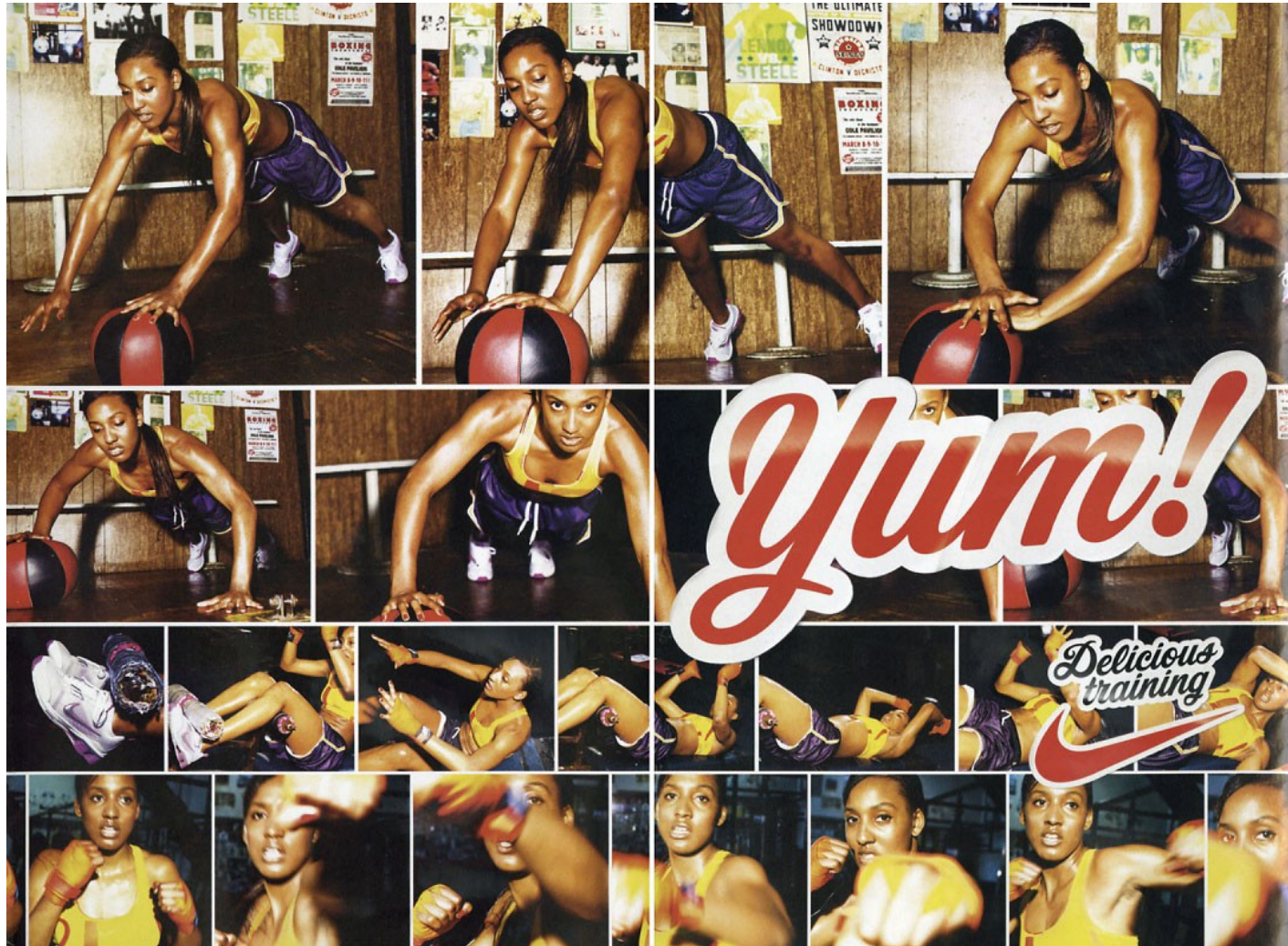
Art Department



Abraham Latham

www.art-dept.com

Art Department



Abraham Latham

www.art-dept.com

Art Department



Abraham Latham

www.art-dept.com

Art Department

FREE TOTE
WITH \$75
SWIM PURCHASE
USE CODE: SP233885
Details page 2

THE
Lace
BIKINI
CUTE SUITS GUARANTEE *fun* IN THE SUN.

BEACH SEXY
A Lace bikini. Fully lined.
Underwire cups. Removable
halter strap. Amalfi blue (37C),
neon hot pink (H64) or white
(D2). Imported polyester/
spandex.
Push-up Bandeau.
Sizes XS-36A-DD: 38B-DD.
A-D sizes: **AM-297-083 \$32.50.**
DD sizes: **AM-297-254 \$34.50.**
Ruched Low-rise Hipkin.
Sizes XS-L.
AM-297-086 \$22.50.

8

Abraham Latham

www.art-dept.com

Art Department



Abraham Latham

www.art-dept.com

Art Department



Abraham Latham

www.art-dept.com

Art Department



Abraham Latham

www.art-dept.com

Art Department



Abraham Latham

www.art-dept.com

Art Department



Abraham Latham

www.art-dept.com

Art Department



Abraham Latham

www.art-dept.com

Art Department



Abraham Latham

www.art-dept.com

Art Department



Abraham Latham

www.art-dept.com

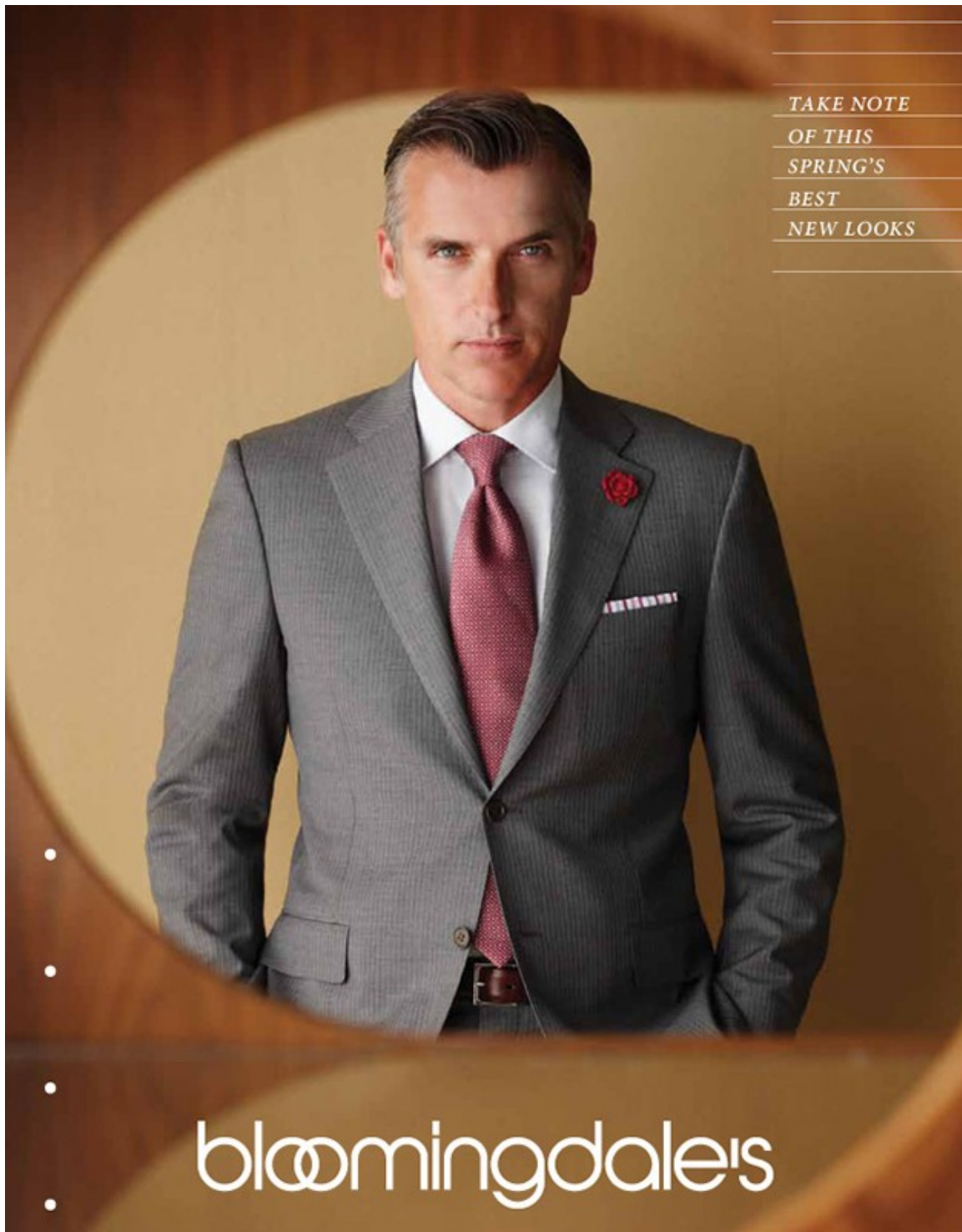
Art Department



Abraham Latham

www.art-dept.com

Art Department

A man with short, dark hair and light eyes is standing in front of a large, circular, light-colored archway. He is wearing a grey pinstriped suit jacket over a white shirt and a red patterned tie. A red rose boutonniere is pinned to his left lapel, and a striped pocket square is visible in his breast pocket. He has his hands in his pockets and is looking directly at the camera. The background is a warm, brownish-gold color.

TAKE NOTE
OF THIS
SPRING'S
BEST
NEW LOOKS

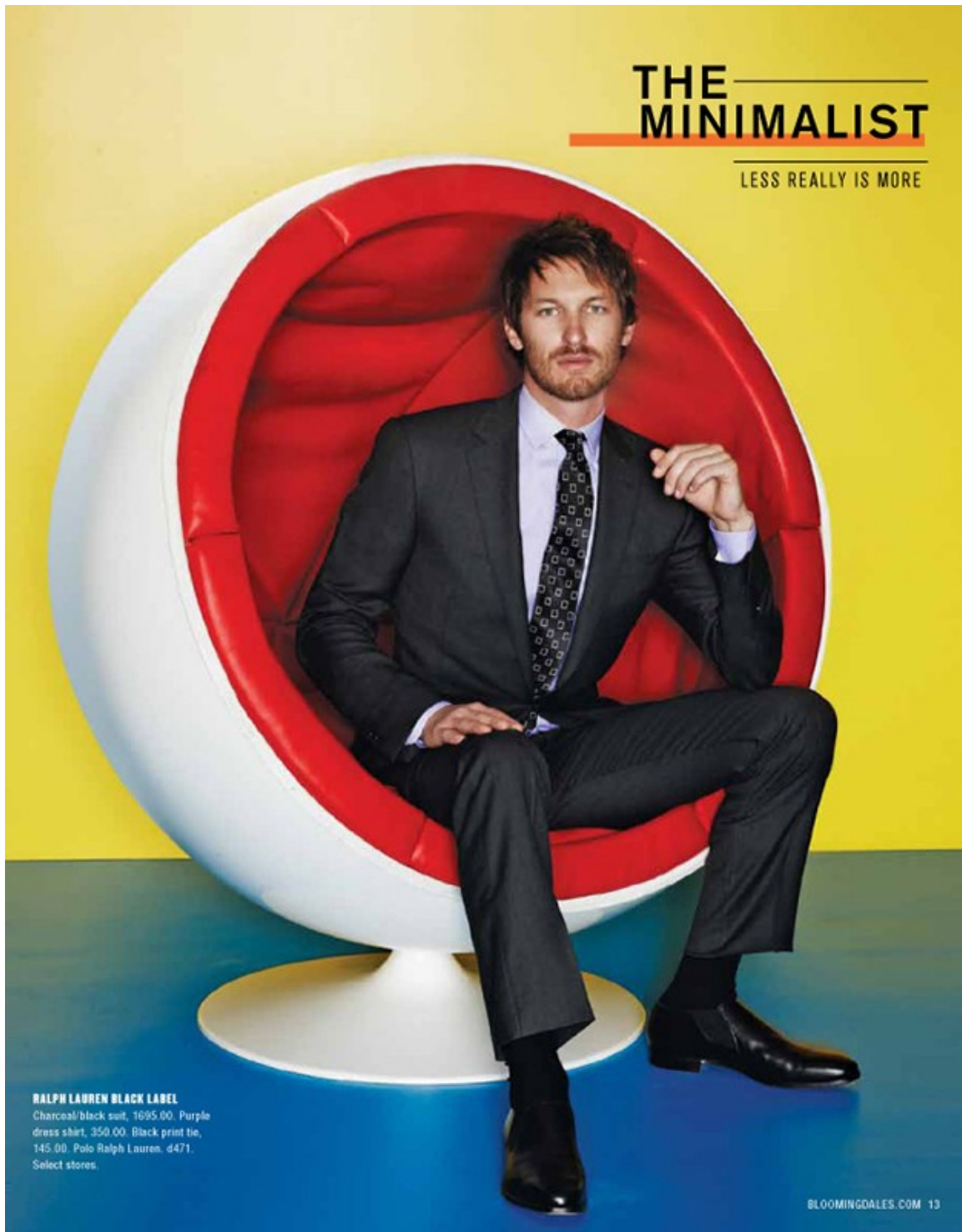
•
•
•
•

bloomingdale's

Abraham Latham

www.art-dept.com

Art Department

A man with a beard, wearing a dark suit, white shirt, and patterned tie, is sitting in a large, white, egg-shaped chair with a red interior. The background is a solid yellow wall and a blue floor. The man is looking directly at the camera with a slight smile. His hands are resting on his lap and one hand is near his chin.

**THE
MINIMALIST**

LESS REALLY IS MORE

RALPH LAUREN BLACK LABEL
Charcoal/black suit, 1695.00. Purple
dress shirt, 350.00. Black print tie,
145.00. Polo Ralph Lauren, d471.
Select stores.

BLOOMINGDALES.COM 13

Abraham Latham

www.art-dept.com

Art Department

THEORY
Tan cotton solid suit, 795.00.
Men's Tailored Clothing, 4526.
White/light blue mini-check dress
shirt, 145.00. Men's Dress Shirts,
4509. Pink linen/silk solid tie, 98.00.
// 582532 Men's Neckwear, 4525.
Select stores.

A man with a beard and short brown hair is standing next to a yellow bench. He is wearing a tan cotton solid suit, a white/light blue mini-check dress shirt, a pink linen/silk solid tie, and red sneakers. He has his hands in his pockets and is looking towards the camera. The background is a solid orange wall, and the floor is blue. The bench has yellow circular seats and a metal frame.

AT HIS SERVICE 1-800-431-9644 19

Abraham Latham

www.art-dept.com

Art Department

A man with short, light brown hair is sitting on a modern, light-colored chair. He is wearing a blue windowpane check wool suit, a white dress shirt with light blue stripes, a yellow and blue striped tie, and a small orange boutonniere on his lapel. He is also wearing blue and white striped socks and dark brown loafers. His hands are clasped in his lap, and he is looking directly at the camera with a slight smile. The background is a plain, light-colored wall and floor.

JOSEPH ABOUD
Blue windowpane check wool suit,
795.00. Men's Suits. d526.
Select stores.

IKE DENAR
White/light blue striped French
cuff dress shirt, 98.50. // 597060.
d509. Taupe/blue striped tie,
95.00. d525. Men's Dress Shirts/
Neckwear. Select stores.


**POINTS ARE A
SHOPPER'S BEST FRIEND!**
TRIPLE POINTS
on everything for everyone
no matter how you pay
from March 8-18!

GLD.MHJGDALES.COM

Abraham Latham

www.art-dept.com

Art Department



A man in a light gray suit stands in a modern interior. Three spherical pendant lights hang from the ceiling. A wooden table is in the foreground. The man is looking towards the camera.

the
TRADITIONALIST
tailored to perfection

CANALI
Light gray tonal-stripe wool suit (also on our front cover), 1795.00.
Men's Tailored Clothing: 4526.
Select stores: Silver check dress shirt, 275.00. // 591278. Men's Dress Shirts: 4509. Berry mini neck tie, 145.00. Men's Neckwear: 4525.

BLOOMINGDALES.COM 5

Abraham Latham

www.art-dept.com