

Art Department



Kenna

www.art-dept.com

Art Department



Kenna

www.art-dept.com

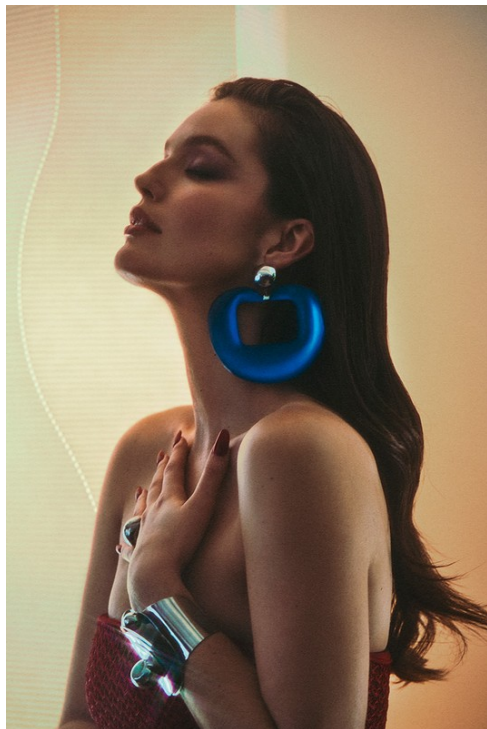
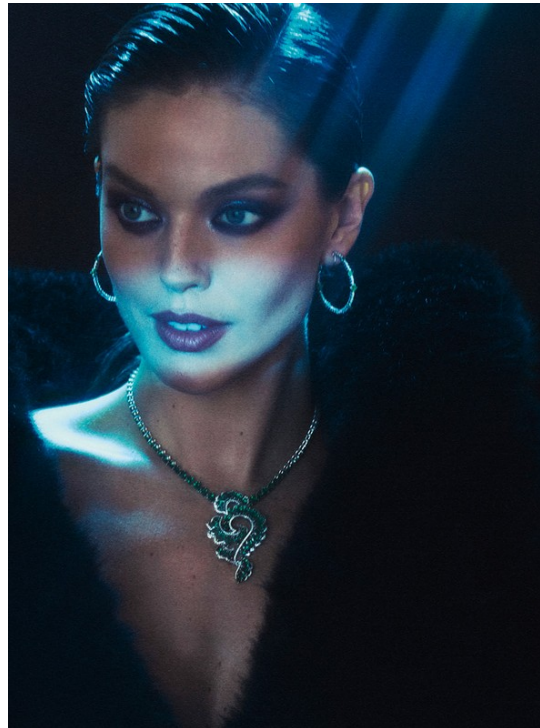
Art Department



Kenna

www.art-dept.com

Art Department



Kenna

www.art-dept.com

Art Department



Kenna

www.art-dept.com

Art Department



Kenna

www.art-dept.com

Art Department



Kenna

www.art-dept.com

Art Department



Kenna

www.art-dept.com

Art Department



Kenna

www.art-dept.com

Art Department



Kenna

www.art-dept.com

Art Department



Kenna

www.art-dept.com

Art Department



Kenna

www.art-dept.com

Art Department



Kenna

www.art-dept.com

Art Department



Kenna

www.art-dept.com

Art Department



Kenna

www.art-dept.com

Art Department



Kenna

www.art-dept.com

Art Department



Kenna

www.art-dept.com

Art Department



Kenna

www.art-dept.com

Art Department



Kenna

www.art-dept.com

Art Department



Kenna

www.art-dept.com

Art Department



Kenna

www.art-dept.com

Art Department



Kenna

www.art-dept.com

Art Department



Kenna

www.art-dept.com

Art Department



Kenna

www.art-dept.com

Art Department



Kenna

www.art-dept.com

Art Department



Kenna

www.art-dept.com

Art Department



Kenna

www.art-dept.com

Art Department



Kenna

www.art-dept.com

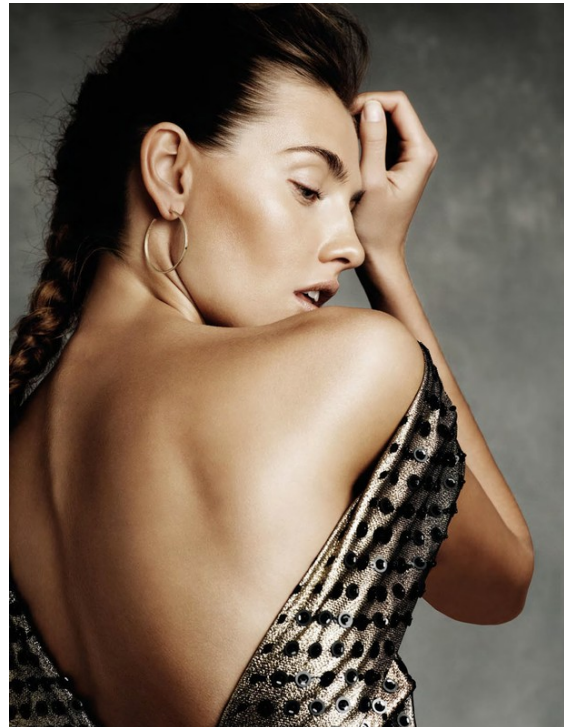
Art Department



Kenna

www.art-dept.com

Art Department



Kenna

www.art-dept.com

Art Department



Kenna

www.art-dept.com

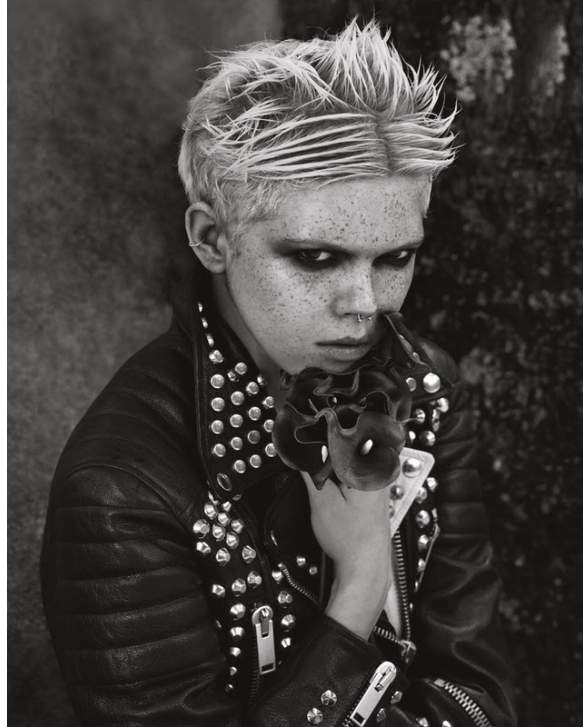
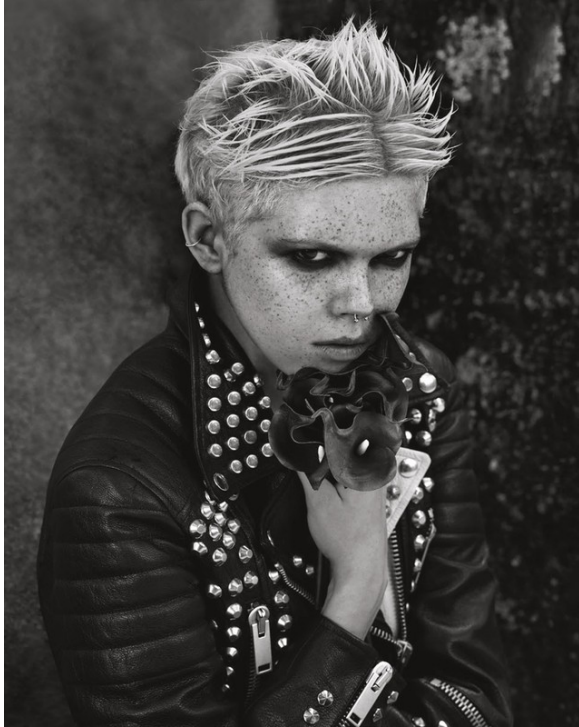
Art Department



Kenna

www.art-dept.com

Art Department



Kenna

www.art-dept.com

Art Department



**LET'S
GO
OUTSIDE**

YOUR COAT NEEDS TO
MAKE A STATEMENT.
MIX BOLD SHAPES
WITH STRONG COLOURS
AND ADD A TOUGH,
PUNK-INSPIRED BOOT.
NOW YOU'RE READY TO
TAKE ON ANYTHING

Photography: Ben Morris Fashion: Joanne Blades Models: Kat Markey

Charmers waistcoat, £6,395, and cashmere coat, £4,875, both H&M Silk-crepe top, £854, matching trousers, price on request, and leather and metal belt, price on request, all Anthony Vaccarello; Leather boots, price on request, Alexander Wang; Embellished felt hat, £820, Larvin; Crochet grill top, index finger, £1,110, and crocheted grill top (middle finger), £1,023, both Raposo

295

Kenna

www.art-dept.com

Art Department



Kenna

www.art-dept.com

Art Department



TRENDA L U R E

Fascinantes looks fueron el resultado de la reinterpretación —al estilo Bazaar— de las tendencias sobresalientes de los diseñadores más reconocidos para esta temporada de primavera.

Fotografías de Tom Schirmacher



Kenna

www.art-dept.com

Art Department



MIRADA ALTAMENTE PIGMENTADA.
El contraste de las sombras en tonos azul, verde y morado con la piel mate fueron una gran propuesta en los desfiles de Marc Jacobs, Giorgio Armani y Céline. Basar en las increíbles tonalidades de las paletas Color Design & Plan Eyeshadow de Lancôme y el Color Clone Subl-Mat de Helena Rubinstein.

Vestido, Balenciaga.

Editora de Belleza Senior: Stephanie Arques. Editora de Belleza: Paulina Florencia. Maquillaje: Tracy Alfajara. Asistentes de Foto: Janet Christiansen y Jonathan Tasker. Retoque Digital: Andrea Bartley. Pelo: Kiara usando GHG. Styling: Mary Felipeco. Asistente de Moda: Brian Paulson. Make-up: Maki Sakamoto. Modelos: Al'Michael para IMG. Casting de modelo: Jacqui Heller para Creative. Productora: Rita Noda.



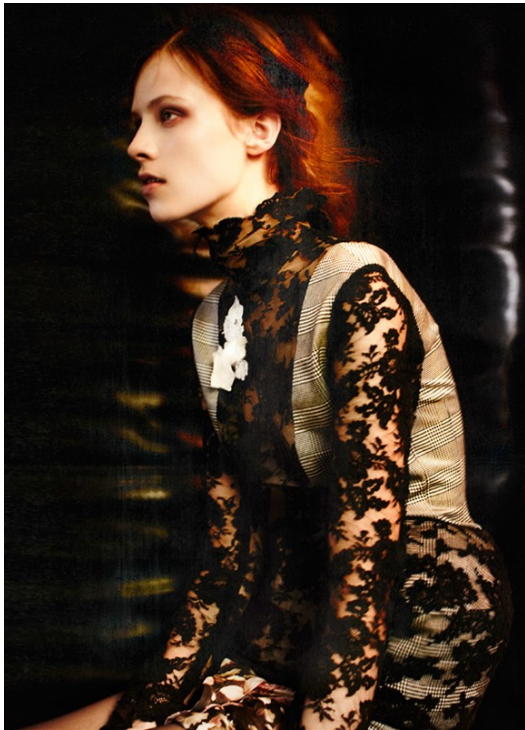
DRAMATISMO IMPACTANTE
En las pasarelas de YSL y Just Cavalli, una mirada intimidante se adhirió al caballo gracias a las diferentes interpretaciones de los smokey eyes. Logra un trazo preciso con un pincel delgado y el long-wear Gel Eyeliner de Bobbi Brown, complementado con unas cejas naturales y definidas con el Source Powder de Dior.

Jump suit, Max Mara. Abrigo, Miu Miu.

Kenna

www.art-dept.com

Art Department



Kenna

www.art-dept.com

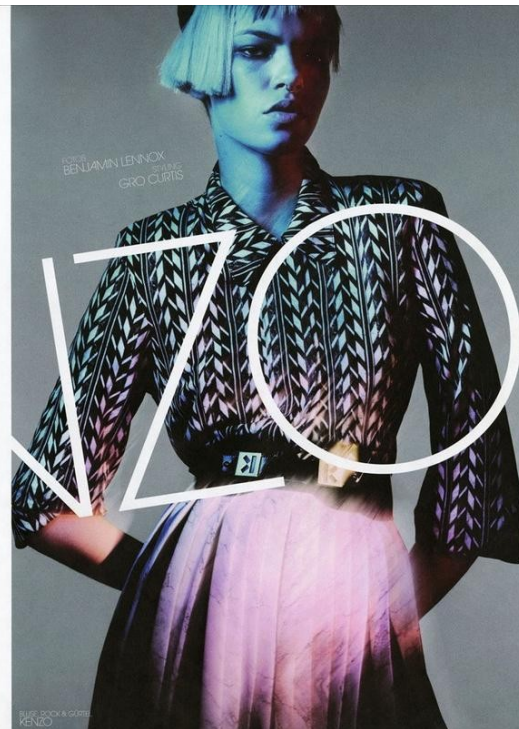
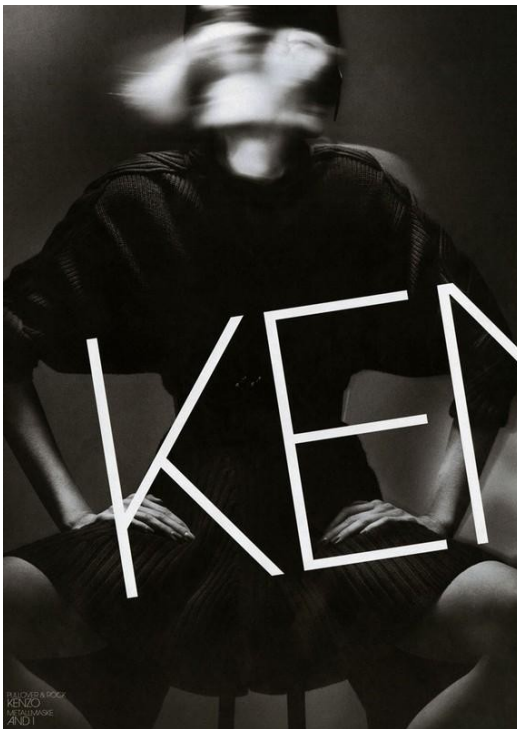
Art Department



Kenna

www.art-dept.com

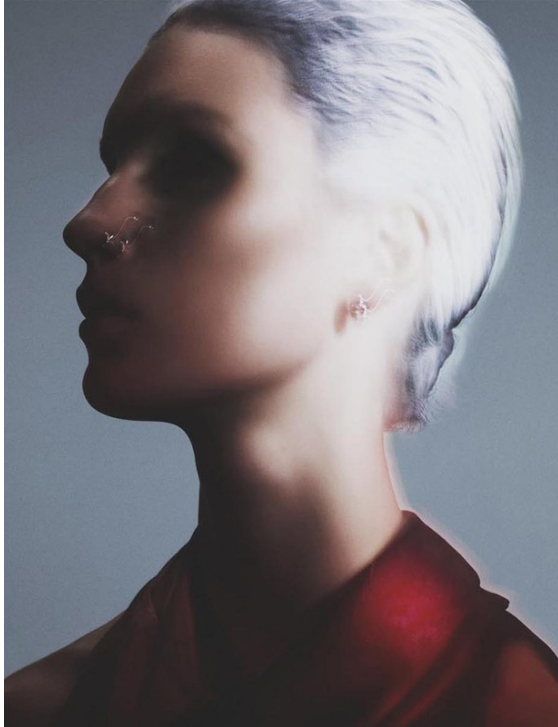
Art Department



Kenna

www.art-dept.com

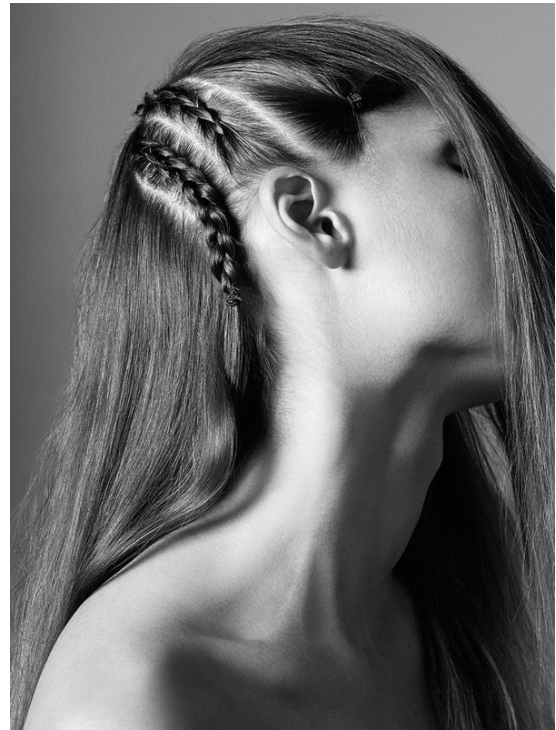
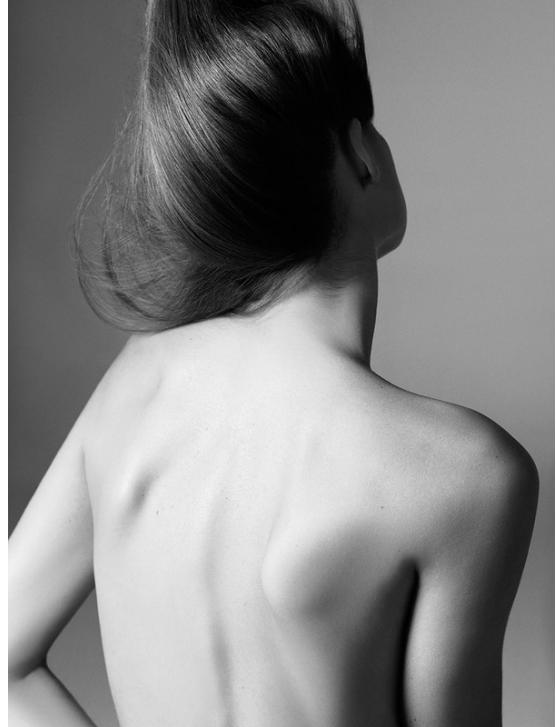
Art Department



Kenna

www.art-dept.com

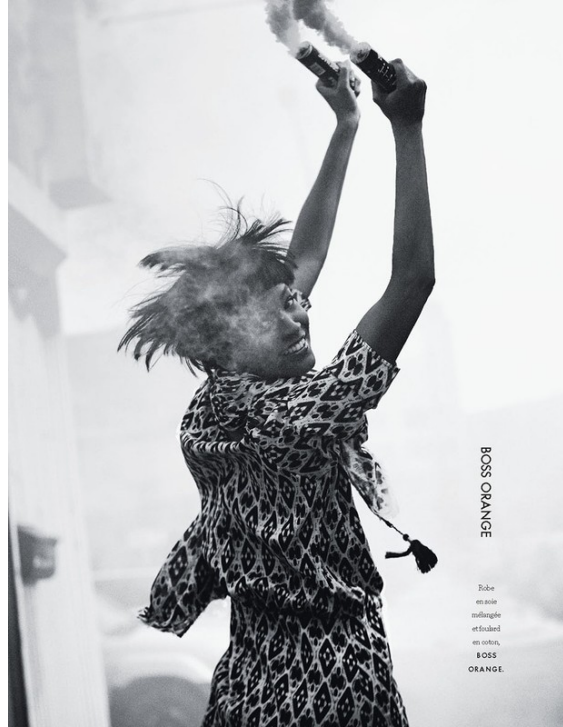
Art Department



Kenna

www.art-dept.com

Art Department



Kenna

www.art-dept.com

Art Department



Kenna

www.art-dept.com

Art Department



Kenna

www.art-dept.com

Art Department



Kenna

www.art-dept.com

Art Department



109

#17/2019/STYLER



Kenna

www.art-dept.com

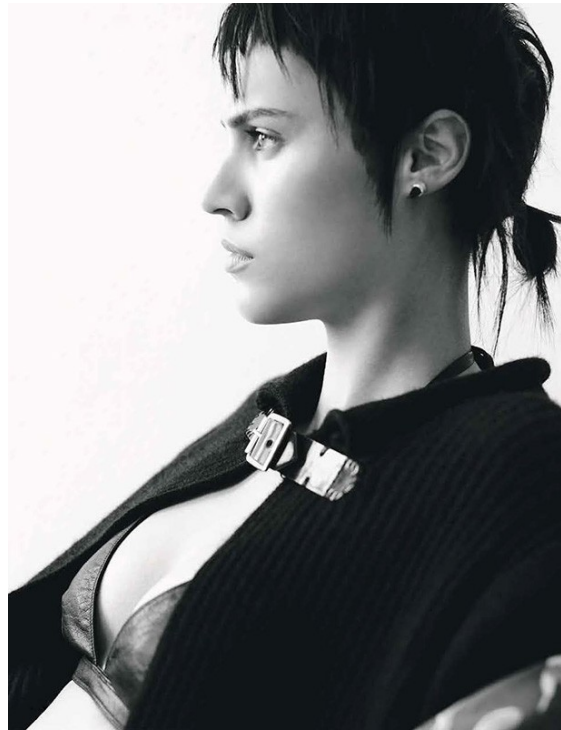
Art Department



Kenna

www.art-dept.com

Art Department



Kenna

www.art-dept.com

Art Department



Kenna

www.art-dept.com

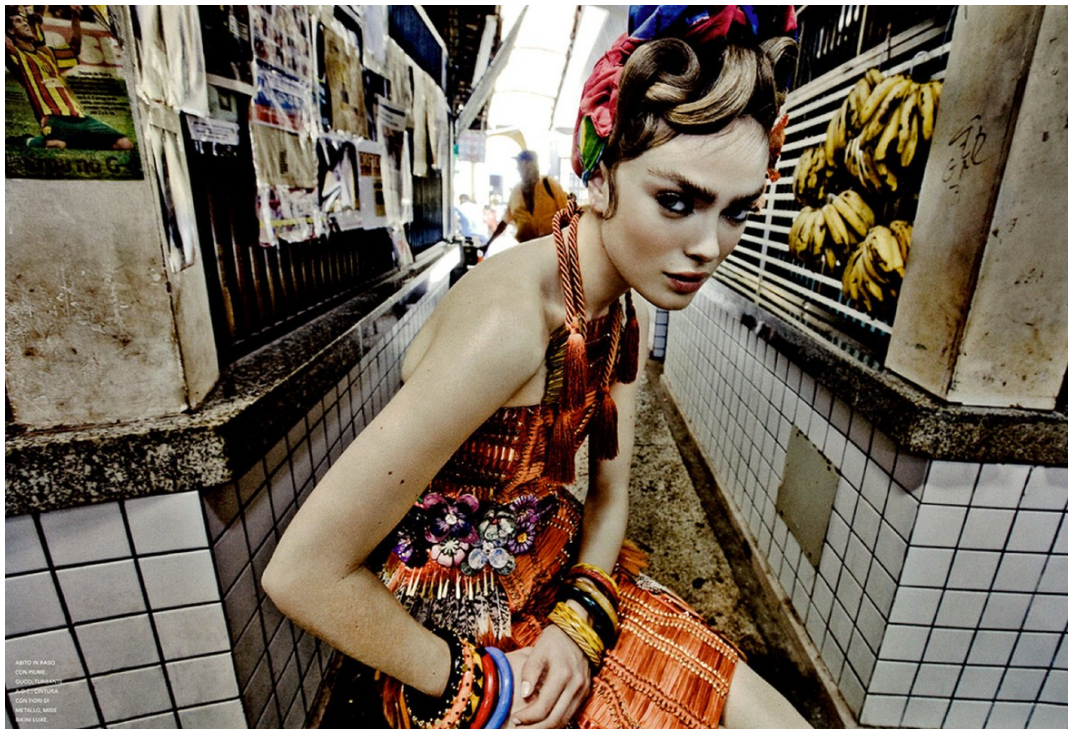
Art Department



Kenna

www.art-dept.com

Art Department



Kenna

www.art-dept.com

Art Department



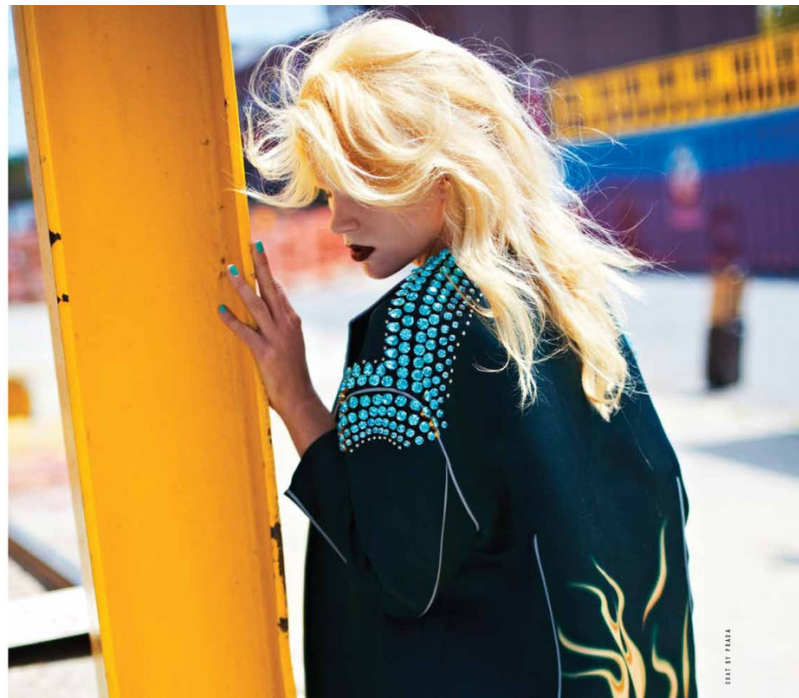
Kenna

www.art-dept.com

Art Department

G
C A R R O L
R
D
E
N
S

PHOTOGRAPHY: JORDAN KLEIN / ARTISTBYJOHN.COM
HAIR: JESS
STYLING: DIANA LINT
MAKEUP: JESSICA LINT
ART: JESSICA



Kenna

www.art-dept.com

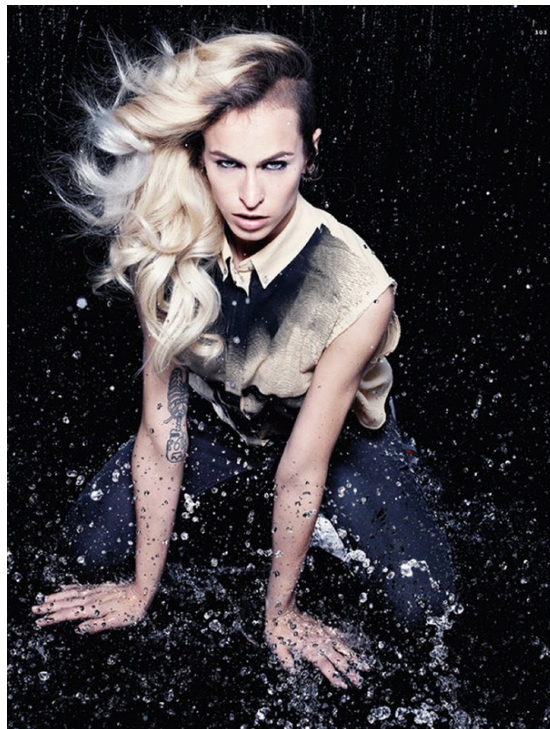
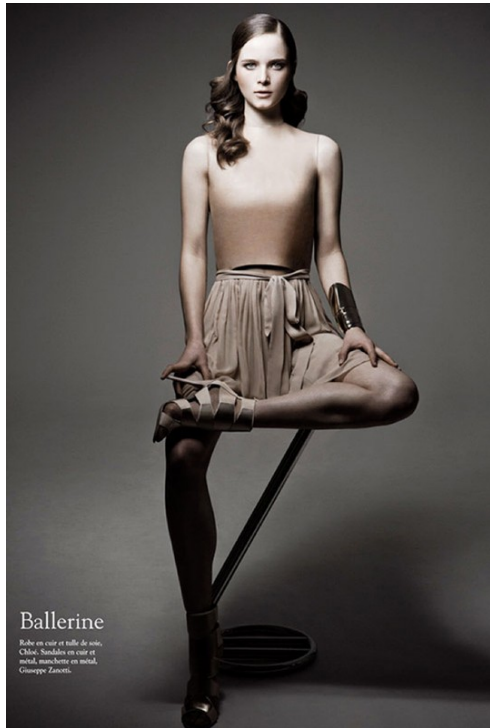
Art Department



Kenna

www.art-dept.com

Art Department



Kenna

www.art-dept.com

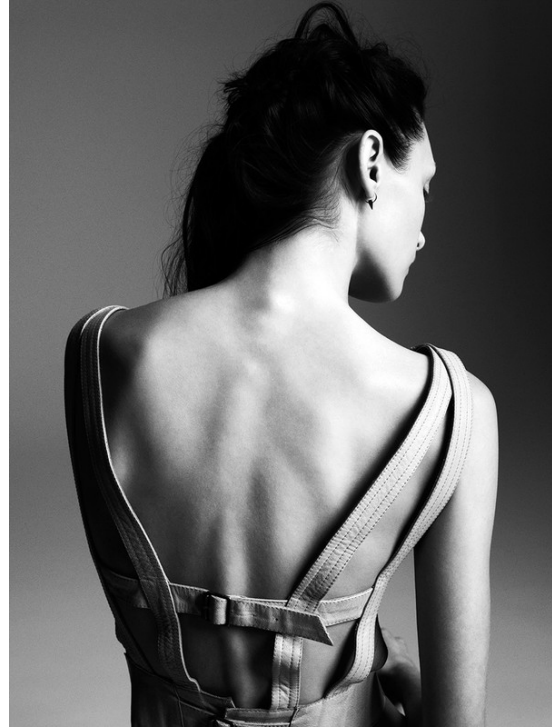
Art Department



Kenna

www.art-dept.com

Art Department



Kenna

www.art-dept.com

Art Department



Kenna

www.art-dept.com

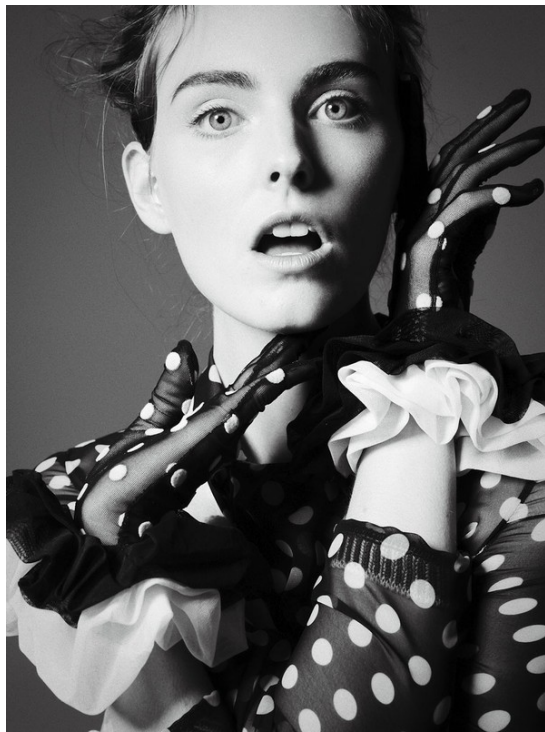
Art Department



Kenna

www.art-dept.com

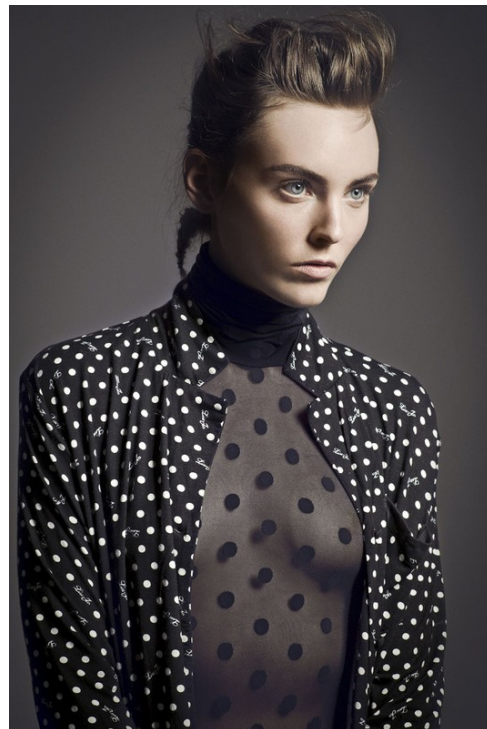
Art Department



Kenna

www.art-dept.com

Art Department



Kenna

www.art-dept.com

Art Department



Kenna

www.art-dept.com

Art Department



Kenna

www.art-dept.com

Art Department



Kenna

www.art-dept.com

Art Department

Skin PRABAL GURUNG
Headband CHANEL



“peace
is always
beautiful”

— Walt Whitman

Photographer CHRIS CRAYMER
Styling SARAH COBB

Dress BURBERRY PRORSUM
Jacket SONIA RYKIEL
Hat STEPHEN JONES



Skin PRADA
Skirt DIANE VON FURSTENBERG
Bracelet, brooch MIU MIU
Sneak PIERCE
Belt JIL SANDER
Gloves LACRASSIA



Kenna

www.art-dept.com

Art Department



Kenna

www.art-dept.com

Art Department



Kenna

www.art-dept.com

Art Department



Kenna

www.art-dept.com

Art Department



Kenna

www.art-dept.com

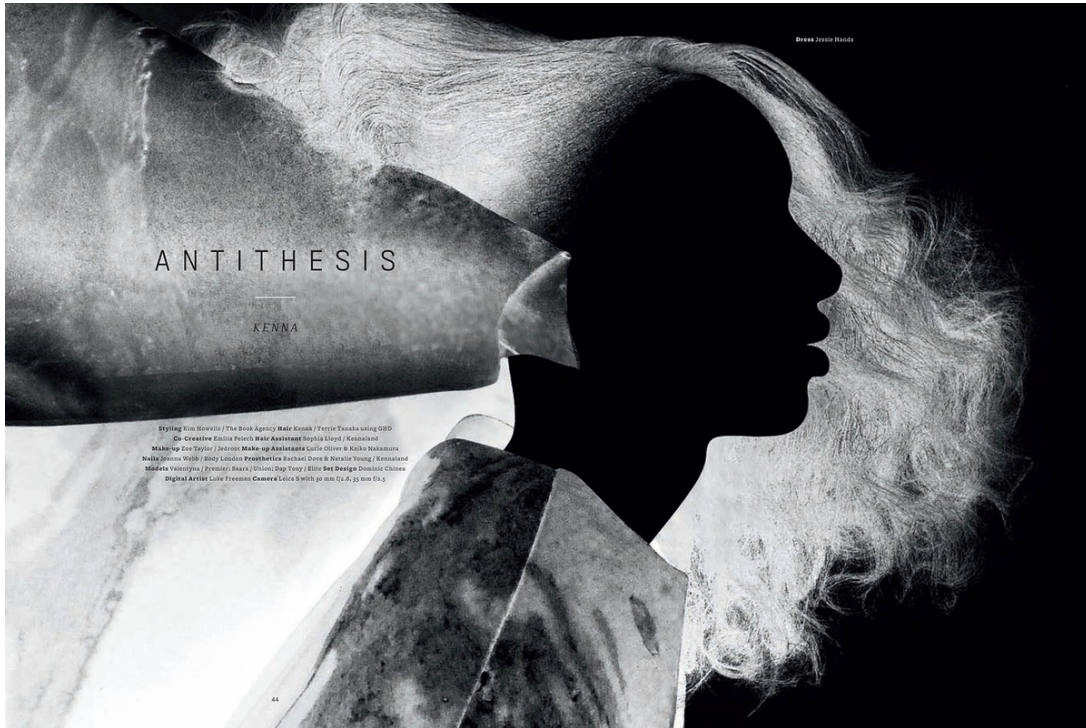
Art Department



Kenna

www.art-dept.com

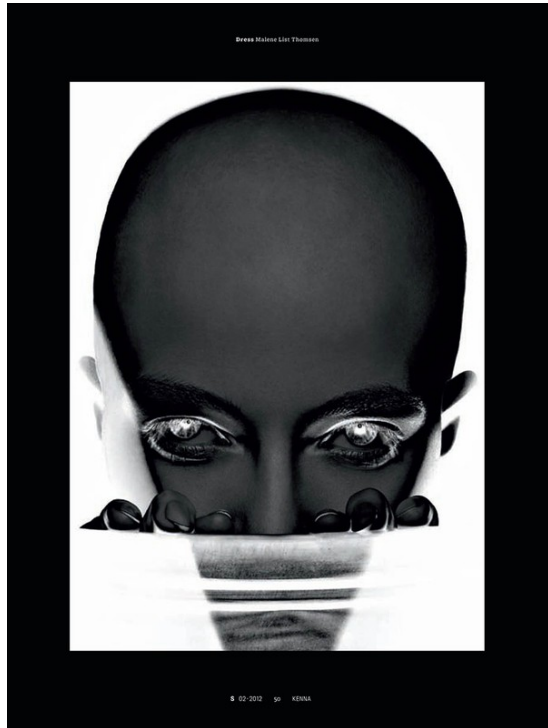
Art Department



Kenna

www.art-dept.com

Art Department



Kenna

www.art-dept.com

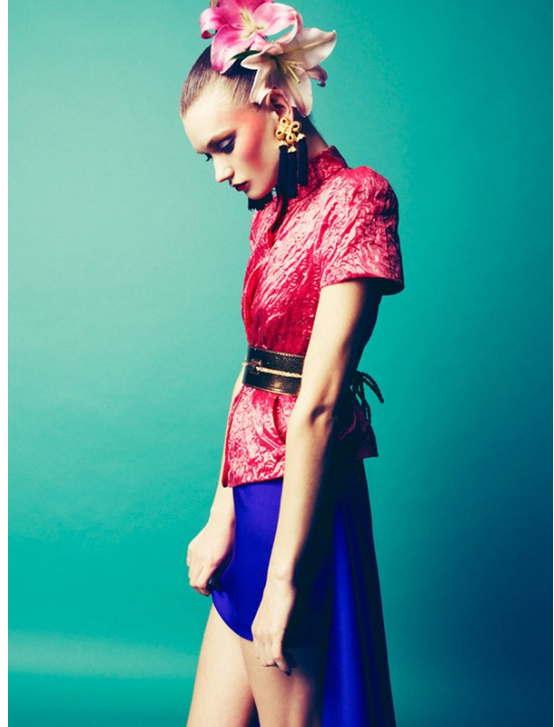
Art Department



Kenna

www.art-dept.com

Art Department



Kenna

www.art-dept.com

Art Department



Kenna

www.art-dept.com

Art Department



Kenna

www.art-dept.com

Art Department

L C
O A
N L
D L
O I
N N
G



Kenna

www.art-dept.com

Art Department



Kenna

www.art-dept.com

Art Department



Kenna

www.art-dept.com

Art Department



Kenna

www.art-dept.com

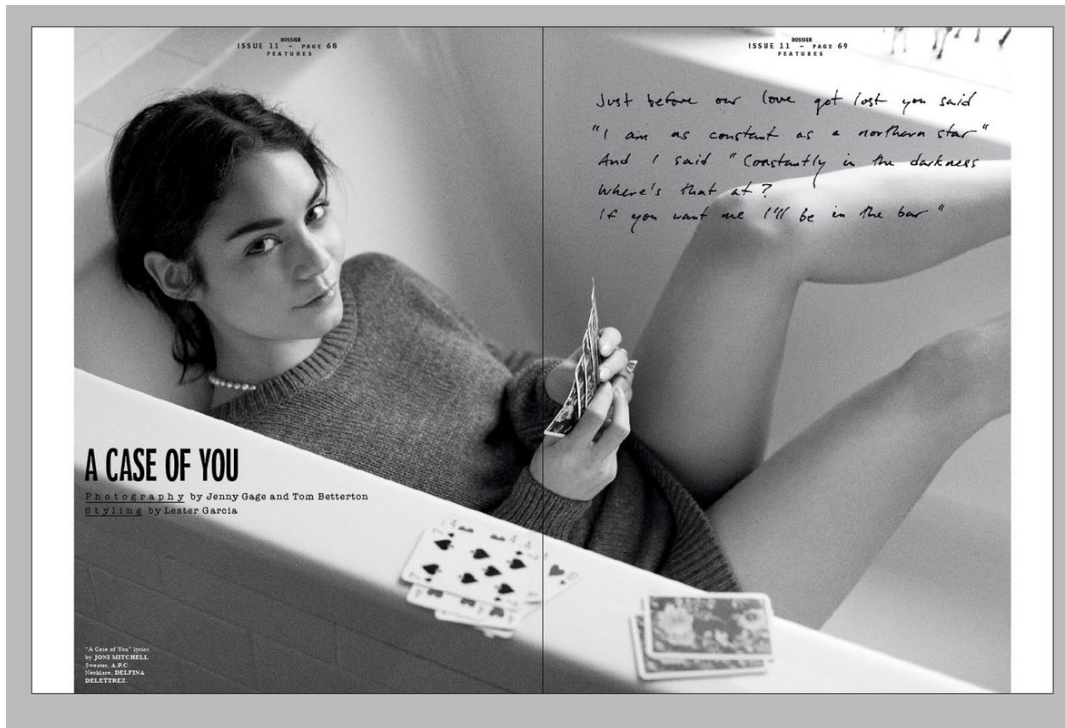
Art Department



Kenna

www.art-dept.com

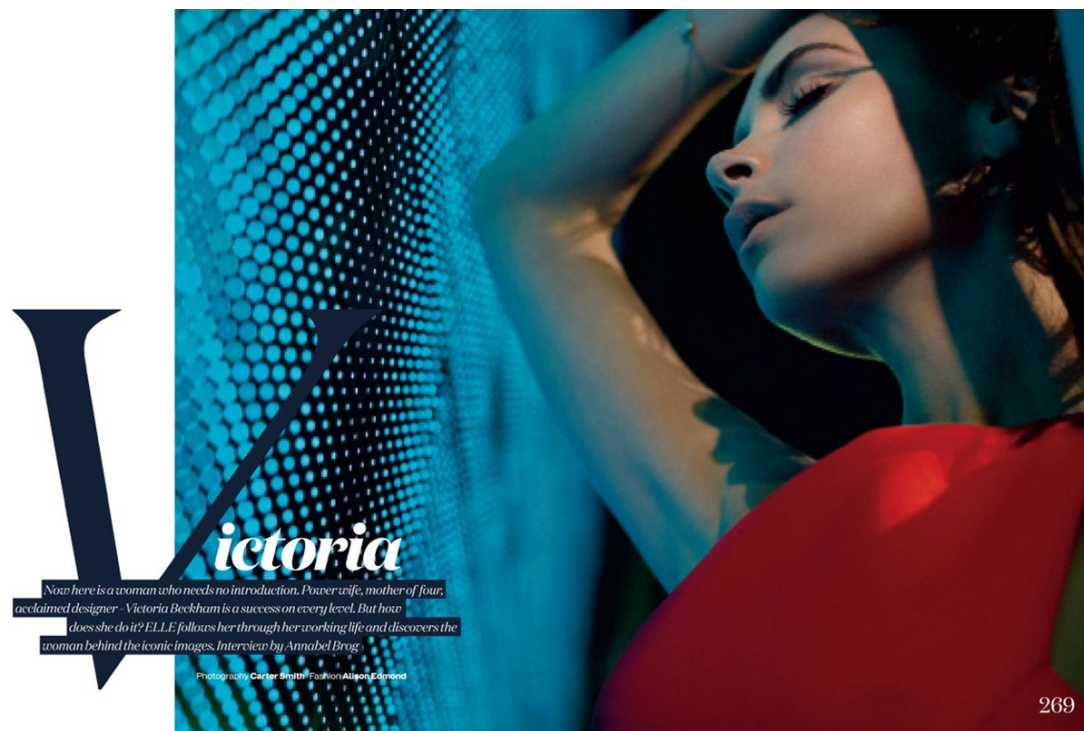
Art Department



Kenna

www.art-dept.com

Art Department



Kenna

www.art-dept.com

Art Department



Kenna

www.art-dept.com

Art Department



Kenna

www.art-dept.com