

Art Department



Sirsa

www.art-dept.com

Art Department



Sirsa

www.art-dept.com

Art Department



Sirsa

www.art-dept.com

Art Department



Sirsa

www.art-dept.com

Art Department



Sirsa

www.art-dept.com

Art Department



Sirsa

www.art-dept.com

Art Department



Sweater by **Autumn Cashmere**, pants by **Sally LaPointe**, gloves by **Sleepers**, jewelry by **de Cosmi**

Sirsa

www.art-dept.com

Art Department



Sirsa

www.art-dept.com

Art Department



Sirsa

www.art-dept.com

Art Department



Sirsa

www.art-dept.com

Art Department



Sirsa

www.art-dept.com

Art Department



Sirsa

www.art-dept.com

Art Department



Sirsa

www.art-dept.com

Art Department



Sirsa

www.art-dept.com

Art Department



Sirsa

www.art-dept.com

Art Department



Sirsa

www.art-dept.com

Art Department



Sirsa

www.art-dept.com

Art Department



Sirsa

www.art-dept.com

Art Department



Sirsa

www.art-dept.com

Art Department



Sirsa

www.art-dept.com

Art Department



Sirsa

www.art-dept.com

Art Department



Sirsa

www.art-dept.com

Art Department



Sirsa

www.art-dept.com

Art Department



Sirsa

www.art-dept.com

Art Department



Sirsa

www.art-dept.com

Art Department



Sirsa

www.art-dept.com

Art Department



Sirsa

www.art-dept.com

Art Department



Sirsa

www.art-dept.com

Art Department



Sirsa

www.art-dept.com

Art Department



Sirsa

www.art-dept.com

Art Department



Sirsa

www.art-dept.com

Art Department



Sirsa

www.art-dept.com

Art Department



Sirsa

www.art-dept.com

Art Department



Sirsa

www.art-dept.com

Art Department



Sirsa

www.art-dept.com

Art Department



Sirsa

www.art-dept.com

Art Department



Sirsa

www.art-dept.com

Art Department



Sirsa

www.art-dept.com

Art Department



Sirsa

www.art-dept.com

Art Department



Sirsa

www.art-dept.com

Art Department



Sirsa

www.art-dept.com

Art Department



Sirsa

www.art-dept.com

Art Department



Sirsa

www.art-dept.com

Art Department



Sirsa

www.art-dept.com

Art Department



Sirsa

www.art-dept.com

Art Department



Sirsa

www.art-dept.com

Art Department



Sirsa

www.art-dept.com

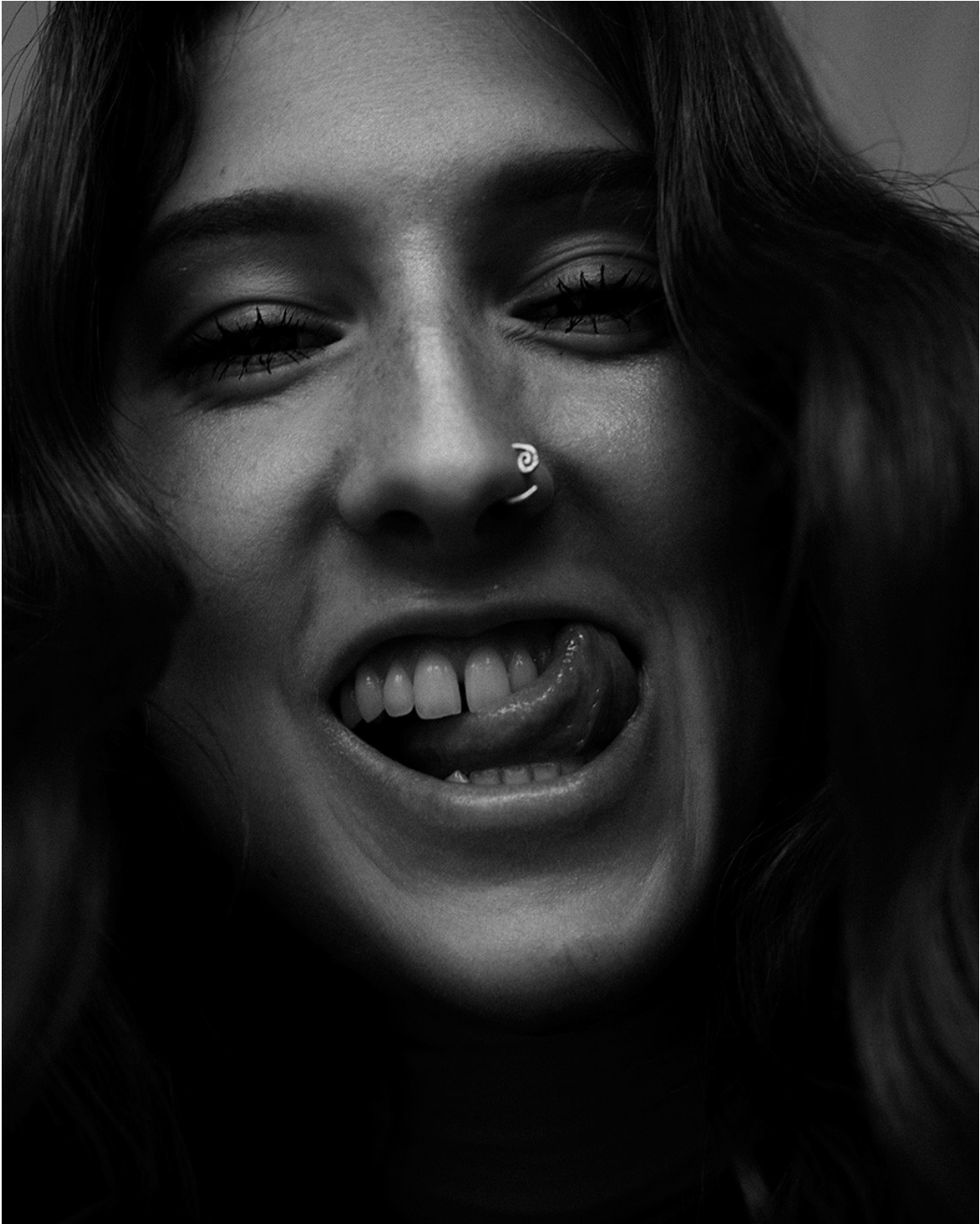
Art Department



Sirsa

www.art-dept.com

Art Department



Sirsa

www.art-dept.com

Art Department



Sirsa

www.art-dept.com

Art Department



Sirsa

www.art-dept.com

Art Department



Sirsa

www.art-dept.com

Art Department



Sirsa

www.art-dept.com

Art Department



Sirsa

www.art-dept.com

Art Department



Sirsa

www.art-dept.com

Art Department



Sirsa

www.art-dept.com

Art Department



Sirsa

www.art-dept.com

Art Department



Sirsa

www.art-dept.com

Art Department



Sirsa

www.art-dept.com

Art Department



Sirsa

www.art-dept.com

Art Department



Sirsa

www.art-dept.com

Art Department



Sirsa

www.art-dept.com

Art Department



Sirsa

www.art-dept.com

Art Department



Sirsa

www.art-dept.com

Art Department



Sirsa

www.art-dept.com

Art Department



Sirsa

www.art-dept.com

Art Department



Sirsa

www.art-dept.com

Art Department



Sirsa

www.art-dept.com

Art Department



Sirsa

www.art-dept.com

Art Department



Sirsa

www.art-dept.com

Art Department



Sirsa

www.art-dept.com

Art Department



Sirsa

www.art-dept.com

Art Department



Sirsa

www.art-dept.com

Art Department



Sirsa

www.art-dept.com

Art Department



Sirsa

www.art-dept.com

Art Department



Sirsa

www.art-dept.com

Art Department



Sirsa

www.art-dept.com

Art Department



Sirsa

www.art-dept.com

Art Department



Sirsa

www.art-dept.com

Art Department



Sirsa

www.art-dept.com

Art Department



Sirsa

www.art-dept.com

Art Department



Sirsa

www.art-dept.com

Art Department

*Manteau,
CHANEL. Robe
maxi, THE ROW.
Gants en cuir,
CAROLINA
AMATO.*



*Manteau,
CHANEL. Robe
maxi, THE ROW.
Gants en cuir,
CAROLINA
AMATO.*

Sirsa

www.art-dept.com

Art Department



Chemise, ROCHAS.

Sirsa

www.art-dept.com

Art Department



*Total look, THOM
BROWNE.*

Sirsa

www.art-dept.com

Art Department



Robe, CÉLINE.

*Mannequin:
Hollie May Saker chez Trump
Models:
Coiffure:
Sirsa Punciano
Maquillage:
Akiko Owada
Production:
Rachel Skumanich
Assistant photo:
Marcel Vocino
Assistante styliste:
Marie Choi
Assistant production:
Alejandro Cubilan et
Ariya Seligman
Casting:
David Chen
Technicien Support Digital:
Brian Heimbuecher*

Sirsa

www.art-dept.com

Art Department



Sirsa

www.art-dept.com

Art Department



Sirsa

www.art-dept.com

Art Department



Sirsa

www.art-dept.com

Art Department



Sirsa

www.art-dept.com

Art Department



Sirsa

www.art-dept.com

Art Department



Sirsa

www.art-dept.com

Art Department



Sirsa

www.art-dept.com

Art Department



Sirsa

www.art-dept.com

Art Department



Sirsa

www.art-dept.com

Art Department



Sirsa

www.art-dept.com

Art Department



Sirsa

www.art-dept.com

Art Department



Sirsa

www.art-dept.com

Art Department



Sirsa

www.art-dept.com

Art Department



KIM MEE HYE

Antwerp

Sirsa

www.art-dept.com

Art Department



KIM MEE HYE

Antwerp

Sirsa

www.art-dept.com

Art Department



Sirsa

www.art-dept.com

Art Department



Sirsa

www.art-dept.com

Art Department



Sirsa

www.art-dept.com

Art Department



Sirsa

www.art-dept.com

Art Department



Sirsa

www.art-dept.com

Art Department



Sirsa

www.art-dept.com

Art Department



Sirsa

www.art-dept.com

Art Department



Sirsa

www.art-dept.com

Art Department



Sirsa

www.art-dept.com

Art Department



Sirsa

www.art-dept.com

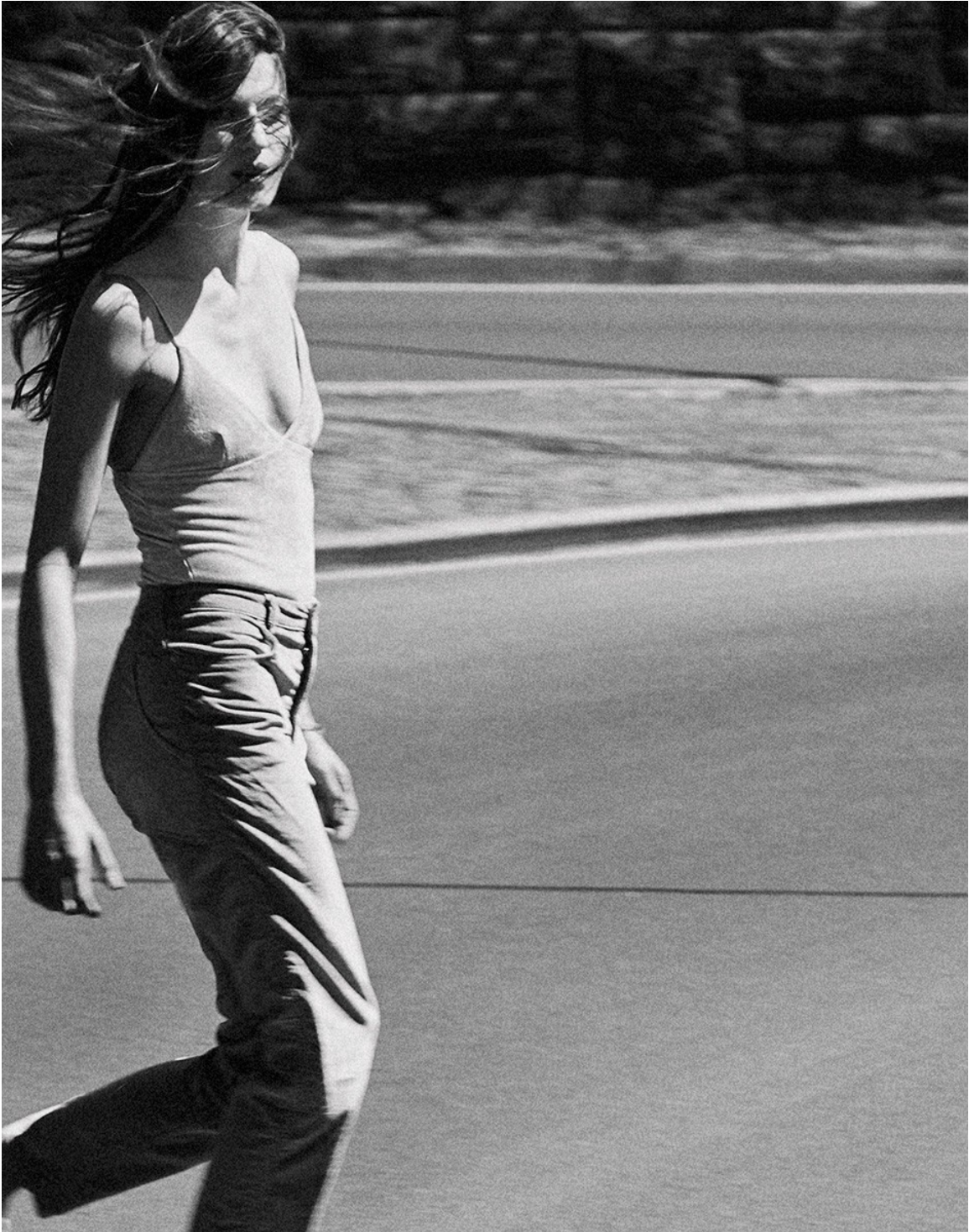
Art Department



Sirsa

www.art-dept.com

Art Department



Sirsa

www.art-dept.com

Art Department



Sirsa

www.art-dept.com

Art Department



Sirsa

www.art-dept.com

Art Department



Sirsa

www.art-dept.com