

Art Department



Ben Watts

www.art-dept.com

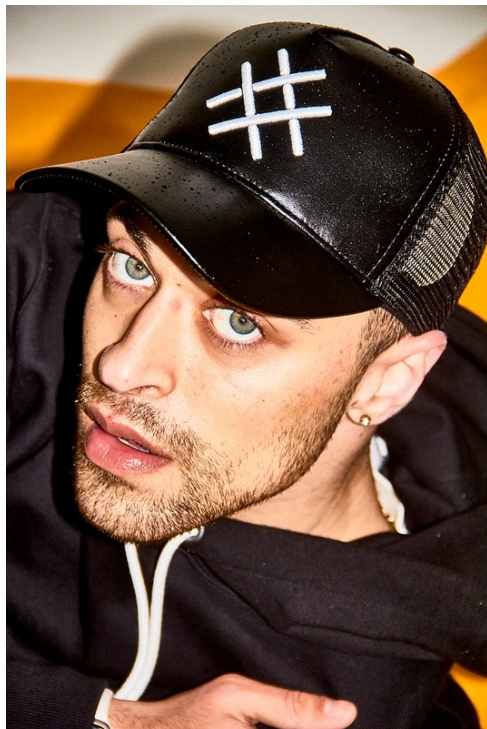
Art Department



Ben Watts

www.art-dept.com

Art Department



Ben Watts

www.art-dept.com

Art Department



Ben Watts

www.art-dept.com

Art Department



Ben Watts

www.art-dept.com

Art Department



Ben Watts

www.art-dept.com

Art Department



Ben Watts

www.art-dept.com

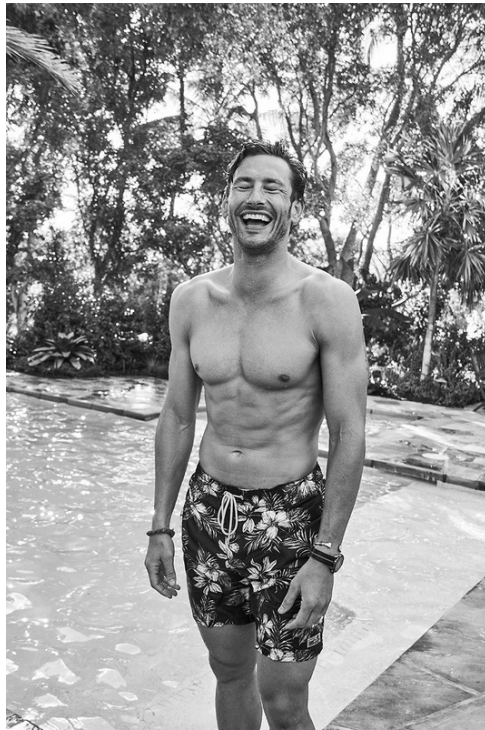
Art Department



Ben Watts

www.art-dept.com

Art Department



Ben Watts

www.art-dept.com

Art Department



Ben Watts

www.art-dept.com

Art Department



Ben Watts

www.art-dept.com

Art Department



Ben Watts

www.art-dept.com

Art Department



Ben Watts

www.art-dept.com

Art Department



Ben Watts

www.art-dept.com

Art Department



Ben Watts

www.art-dept.com

Art Department

Smoking
4 290 Euro

Hemd mit
Manschettknöpfen
395 Euro

Fliege
125 Euro

alles
**Ralph Lauren
Black Label**

Schuhe
Tom Ford
1 000 Euro,
ges. bei **Wool**



146 GQDE—März 2016



Hemd
1100 Euro

Hose
580 Euro

beides
Bottega Veneta

Schuhe
Church's
335 Euro

Brille „SL Classic“
Saint Laurent
230 Euro

STYLE / Sommermode

Smokingjacket
13.320 Euro

Hose
7.360 Euro

Hemd
5.500 Euro

Fliege
380 Euro

alles
Louis Vuitton

Schuh
Tom Ford
1.090 Euro
ges. bei Lodenfrey

Sonnenbrille
„SL Classic“
Saint Laurent
230 Euro



172 GQDE—März 2004



Anzug
500 Euro

Hemd
110 Euro

beides
Boss

Krawatte
**Polo Ralph
Lauren**
100 Euro

Schuhe
Church's
330 Euro

Aktenkoffer
Prada
1 650 Euro

Ben Watts

www.art-dept.com

Art Department

STYLE / Sommermode



Sakko
1470 Euro
Hose
370 Euro
Langarmen-Bluse
560 Euro
Shirts
Cami

178 09/16 - Mai 2017



Jacke
2390 Euro
Shorts
390 Euro
Schul
Freizeit und Freizeit
Shirts
Erweiterung
Kleidung
Brille „St. Classic“
Saint Laurent
220 Euro
Armbanduhr
220 Euro



Ben Watts

www.art-dept.com

Art Department



Ben Watts

www.art-dept.com

Art Department



Ben Watts

www.art-dept.com

Art Department



Ben Watts

www.art-dept.com

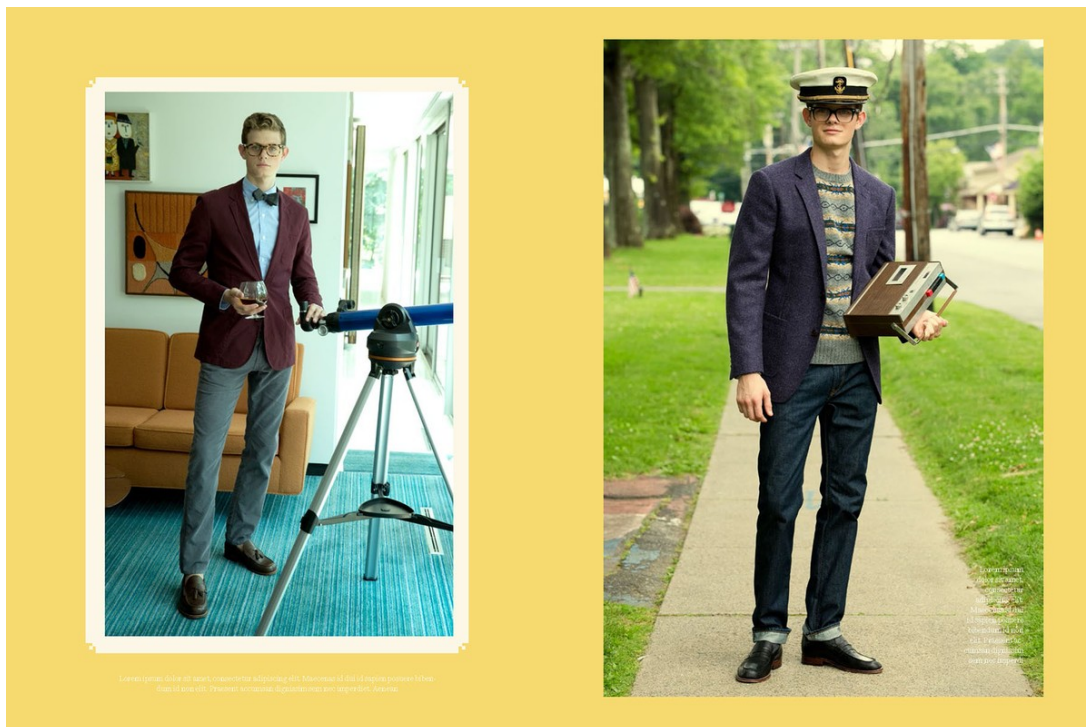
Art Department



Ben Watts

www.art-dept.com

Art Department



Ben Watts

www.art-dept.com

Art Department



Lowen ipsum dolor
sit amet, consectetur
adipiscing elit.
Mauris id dui
id magna posuere
lobortis id tunc elit.
Pursus accumsan
dignissim non acc
impedit. Amena



Lowen ipsum dolor
sit amet, consectetur
adipiscing elit.
Mauris id dui
id magna posuere
lobortis id tunc elit.
Pursus accumsan
dignissim non acc
impedit. Amena

Ben Watts

www.art-dept.com

Art Department



Lorem ipsum dolor sit amet, consectetur adipiscing elit. Maecenas id dui id sapien posuere bibendum id non elit. Praesent accumsan dignissim non nec imperdiet. Aenean



Lorem ipsum dolor sit amet, consectetur adipiscing elit. Maecenas id dui id sapien posuere bibendum id non elit.



Lorem ipsum dolor sit amet, consectetur adipiscing elit. Maecenas id dui id sapien posuere bibendum id non elit.

Ben Watts

www.art-dept.com

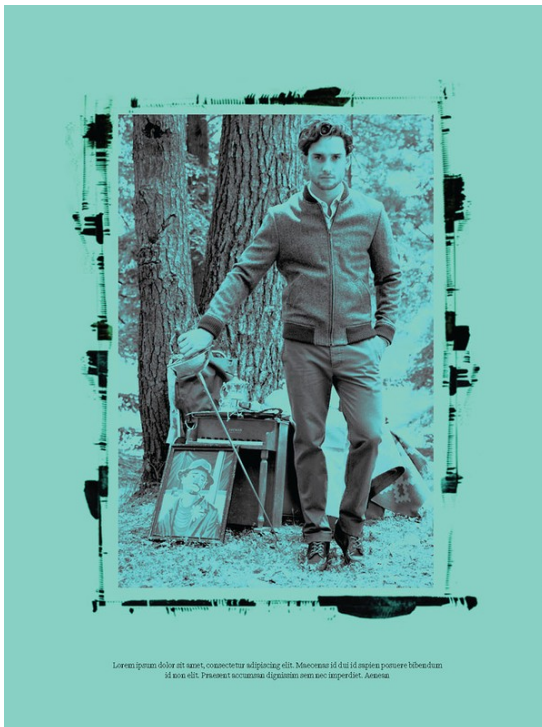
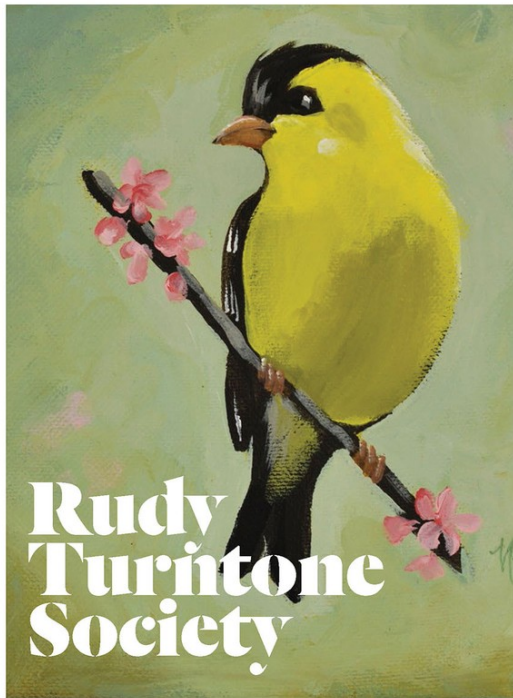
Art Department



Ben Watts

www.art-dept.com

Art Department



Ben Watts

www.art-dept.com

Art Department



Ben Watts

www.art-dept.com

Art Department



Ben Watts

www.art-dept.com

Art Department



Ben Watts

www.art-dept.com

Art Department



Ben Watts

www.art-dept.com

Art Department



Ben Watts

www.art-dept.com

Art Department



Ben Watts

www.art-dept.com

Art Department



Ben Watts

www.art-dept.com

Art Department



Ben Watts

www.art-dept.com

Art Department



Ben Watts

www.art-dept.com

Art Department



Ben Watts

www.art-dept.com

Art Department



Ben Watts

www.art-dept.com

Art Department



Ben Watts

www.art-dept.com

Art Department



STYLE / Herbst/Winter-Mode



Ben Watts

www.art-dept.com

Art Department



STYLE / Herbst/Winter-Mode



2016 OGI 100 - September 2016



Ben Watts

www.art-dept.com

Art Department



Ben Watts

www.art-dept.com

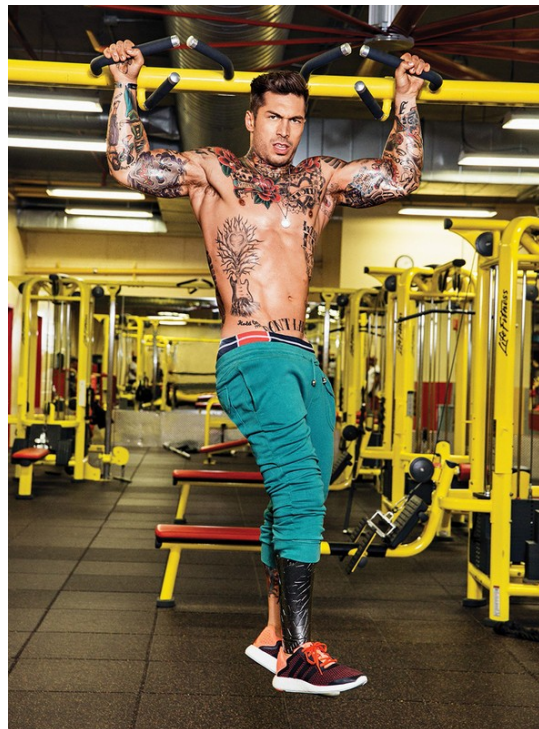
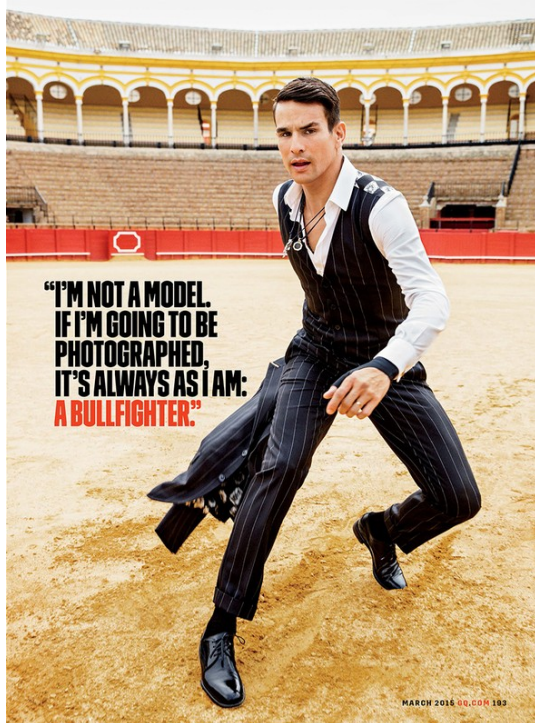
Art Department



Ben Watts

www.art-dept.com

Art Department



Ben Watts

www.art-dept.com

Art Department



Ben Watts

www.art-dept.com

Art Department



Ben Watts

www.art-dept.com

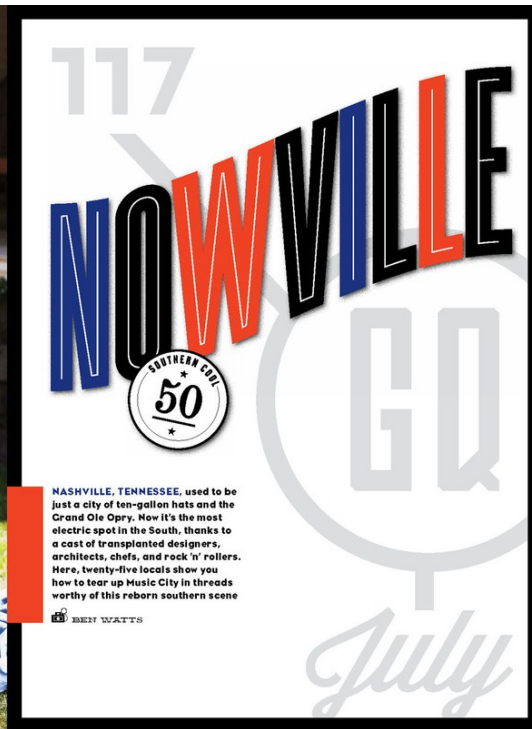
Art Department



Ben Watts

www.art-dept.com

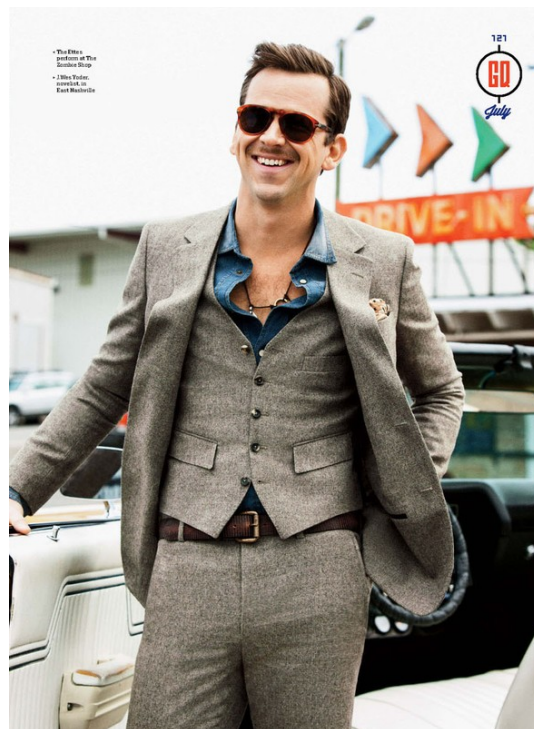
Art Department



Ben Watts

www.art-dept.com

Art Department



Ben Watts

www.art-dept.com

Art Department



Ben Watts

www.art-dept.com

Art Department



Ben Watts

www.art-dept.com

Art Department



Ben Watts

www.art-dept.com

Art Department



Ben Watts

www.art-dept.com

New pop
Your go-to black dress feels safe, but consider it an summer break! Change to a louder hue with black and white stripes. Or try black instead—black-on-black is a dramatic look for more party. On the list: Miley A.P.C., \$290; Short, CH Carolina Herrera, \$350; Stripes, Gypsy, Edm. exp. August 20m, \$297; Stripes, M.C. by Matthew Williamson, \$1,400; to \$1,400; Stripes, Miley A.P.C., \$290; On Asher dress, Elizabeth and James, \$445; Stripes, Miley A.P.C., \$290.
Fashion director: Eryn McLean

Gabe Saporta
lead singer

Ryland Blackinton
guitarist

Alex Suarez
bass player

Nate Novarro
drummer

Mila de Wit
model

Victoria Asher
keytarist

Cobra Starship presents...

YOUR NEW PARTY MIX

Hitting "repeat" every time you get dressed to go out? Switch it up with these hot new finds. You may even be moved to mingle more!

Photographs by Ben Watts

115

[illegible]

Ben Watts

www.art-dept.com

Art Department



**A WHOLE
GRIP OF
FLASH**
PHOTOGRAPHED BY BEN WATTS

PHOTOGRAPH BY BEN WATTS FOR ART DEPARTMENT. STYLING: JESSICA HARRIS FOR ART DEPARTMENT. HAIR: JACOB LACROIX FOR ART DEPARTMENT. MAKEUP: JESSICA HARRIS FOR ART DEPARTMENT. PROP STYLING: JESSICA HARRIS FOR ART DEPARTMENT. SET DESIGN: JESSICA HARRIS FOR ART DEPARTMENT. LOCATION: NEW YORK, JEFFREY MAYER FOR ART DEPARTMENT. PRODUCTION: JESSICA HARRIS FOR ART DEPARTMENT.

SHIRT: COTTON
STRIPED V-NECK SWEATER
AND PANTS: JIL
SANDERS
CAP: BOB BROWN

THE FACE: LECTURE
COAT AND PANTS BY
BURBERRY PRODS



SHIRT: SINGLE BREASTED
JACKET: SIX TONE AND
SIX TONE BY THE NEW
YORK
SHIRT: LACROIX
AND PANTS: HUGO BOSS
SHIRT: HUGO BOSS

COTTON STRIPED SWEATER
BREASTED: JIL AND
COTTON SHIRT BY BOSS
SLEEVES AND STRAP
DESIGNED BY BEN WATTS



Ben Watts

www.art-dept.com

Art Department



COTTON PLUM TUSSED
JACKET COTTON-TIMBER
SHIRT AND COTTON
PANTS BY TOMMY HIL
RISER COLLECTION
LEATHER SHOES BY
JEROME CARVAL
AND SHOES BY SHUHE

DUDE SASSY JACKET
COTTON SWEAT T-SHIRT
AND COTTON
PANTS BY TOMMY HIL
LEATHER HIGH-TOP SHOES
BY Y'S AND COTTON
CAP BY BOB KENNEL



COTTON WHITE BEAUTY
BOY SUIT COTTON HIDE
AND COTTON SHIRT BY
DOLCE & GABBANA
SHORTS BY BOB
KENNEL AND SHOES
DESIGNED BY BLAISEN
HOLLY BEADED TOP AND
SKIN SHORTS BY DE PAUL
LIP LINE TECHNICAL HOOD
SWEETNESS JACKET AND
PANTS BY SHUHE KENNEL

Ben Watts

www.art-dept.com

Art Department



Ben Watts

www.art-dept.com

Art Department



COTTON STRIPED SHIRT-
BRAIEST, SHORT, COTTON
TIE, PINK SHIRT, AND
COTTON STRIPED SHORTS
BY **TRUSSARDI** COTTON
TIE, PINK SHIRT, AND
COTTON STRIPED SHORTS
AND PINK SHIRT
COTTON STRIPED SHORTS
AND PINK SHIRT
BY **TRUSSARDI**

COTTON STRIPED SHIRT-
BRAIEST, SHORT, COTTON
TIE, PINK SHIRT, AND
COTTON STRIPED SHORTS
BY **TRUSSARDI** COTTON
TIE, PINK SHIRT, AND
COTTON STRIPED SHORTS
AND PINK SHIRT
COTTON STRIPED SHORTS
AND PINK SHIRT
BY **TRUSSARDI**

STYLING AND MAKEUP
COORDINATED BY **CLAUDIA
PARK** HAIR PRODUCTS BY
ELIXIR GROOMING PRO-
DUCTS BY **SAVOIR** MAKEUP
ART BY **ANDREW**

STYLING AND MAKEUP
COORDINATED BY **CLAUDIA
PARK** HAIR PRODUCTS BY
ELIXIR GROOMING PRO-
DUCTS BY **SAVOIR** MAKEUP
ART BY **ANDREW**



Ben Watts

www.art-dept.com