

# Art Department



Zac Mitchell

[www.art-dept.com](http://www.art-dept.com)

# Art Department



Zac Mitchell

[www.art-dept.com](http://www.art-dept.com)



# Art Department



Zac Mitchell

[www.art-dept.com](http://www.art-dept.com)

# Art Department



Zac Mitchell

[www.art-dept.com](http://www.art-dept.com)



# Art Department



Zac Mitchell

[www.art-dept.com](http://www.art-dept.com)



# Art Department



Zac Mitchell

[www.art-dept.com](http://www.art-dept.com)



# Art Department



Zac Mitchell

[www.art-dept.com](http://www.art-dept.com)



# Art Department



Zac Mitchell

[www.art-dept.com](http://www.art-dept.com)



# Art Department



Zac Mitchell

[www.art-dept.com](http://www.art-dept.com)



# Art Department



Zac Mitchell

[www.art-dept.com](http://www.art-dept.com)



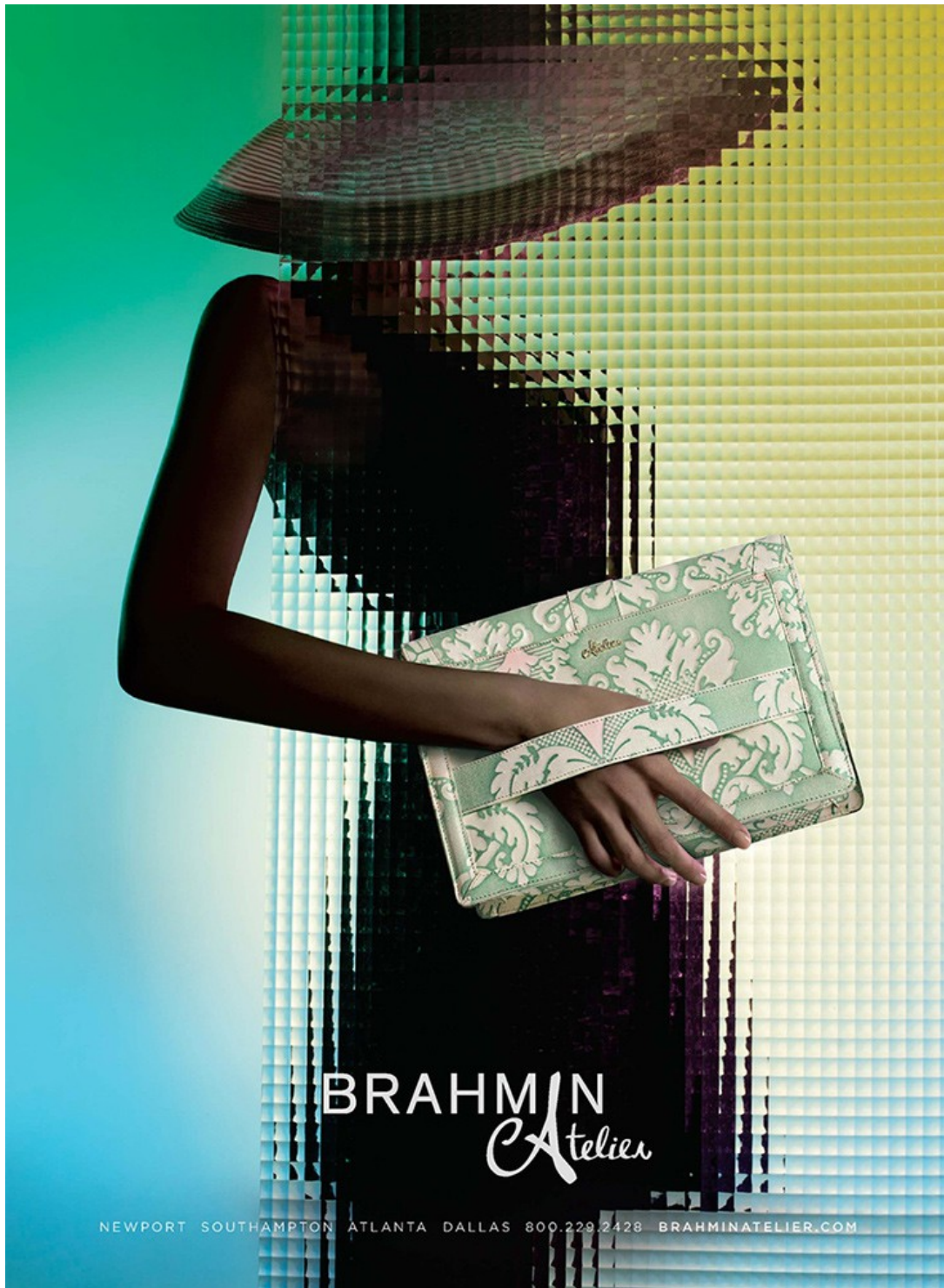
# Art Department



Zac Mitchell

[www.art-dept.com](http://www.art-dept.com)

# Art Department



Zac Mitchell

[www.art-dept.com](http://www.art-dept.com)



# Art Department



Zac Mitchell

[www.art-dept.com](http://www.art-dept.com)



# Art Department



Zac Mitchell

[www.art-dept.com](http://www.art-dept.com)



# Art Department



## Zac Mitchell

[www.art-dept.com](http://www.art-dept.com)



# Art Department



Zac Mitchell

[www.art-dept.com](http://www.art-dept.com)

# Art Department



Zac Mitchell

[www.art-dept.com](http://www.art-dept.com)



# Art Department



Zac Mitchell

[www.art-dept.com](http://www.art-dept.com)



# Art Department



**OPPOSITE PAGE:**  
**HOODED FIELD COAT**  
COLOR: Marshwood. FABRIC: Cotton. Imported. Machine wash.  
SIZE: S-XXL.  
\$249 / cf275032

**WASHED TWILL CHINO SHIRT**  
SEE PAGE 25

**SHORT-SLEEVE SPORT CREW**  
COLOR: Gray Heather (on him, left), Antique Red (on him, right), Ebony. FABRIC: Cotton and polyester. Imported. Machine wash.  
SIZE: S-XXL.  
\$69 / cf275036

**WASHED FATIGUE SHORT**  
COLOR: Pine Bark (on him), Caramel. FABRIC: Cotton. Imported. Machine wash.  
WAIST: Even 30-42, plus 31, 33, 35.  
\$59 / cf274997

**THIS PAGE:**  
**FIELD CARGO SHORT**  
COLOR: Dark Khaki (on him), Dark Navy. FABRIC: Cotton ripstop. Imported. Machine wash.  
WAIST: Even 30-42, plus 31, 33, 35.  
\$79 / cf274994

**BEAN'S ZIPPER DUFFLE**  
COLOR: Kindling (shown), True Black. Medium and Large also in Bright Navy. MATERIAL: Waxed cotton canvas, leather handles. Imported. MEASURES: small 8 1/2" H x 16" W x 7 1/4" D, medium 12 1/4" H x 25" W x 12 1/4" D, large 14 1/4" H x 27" W x 14 1/4" D.  
\$125 / small / cf272945  
\$150 / medium / cf270232  
\$175 / large / cf266751  
MEDIUM IN KINDLING NOT AVAILABLE

**WAXED CANVAS MAINE HUNTING SHOE**  
COLOR: Marsh Brown/Brown (on him), Navy/Brown, Deep Forest/Brown. MATERIAL: Waxed canvas upper. Made in Maine. WHOLE SIZE: Medium D 7-14.  
\$139 / cf262905

22/23

Zac Mitchell

[www.art-dept.com](http://www.art-dept.com)



# Art Department



A man with a beard and a tan baseball cap is sitting on a grey suitcase. He is wearing a blue chambray shirt, olive green pants, and brown leather boots. He is smiling at the camera. The background is a rustic wooden wall.

**THIS PAGE:**  
**CHAMBRAY SHIRT**  
COLOR: Dark Indigo. FABRIC: Cotton chambray. Imported. Machine wash. SIZE: S-XXL.  
\$69 / cf273282

**SIGNATURE BELT**  
SEE ONLINE

**WASHED FATIGUE PANT**  
COLOR: Pine Bark (on him), Caramel. FABRIC: Cotton. Imported. Machine wash. WAIST: Even 30-42, plus 31, 33, 35. INSEAM: 30", 32", 34", 36". 36" inseam only available in 34 waist and larger.  
\$69 / cf276132

**LEATHER MAINE HUNTING SHOE**  
COLOR: Brown/Brown. MATERIAL: Leather. Made in Maine. Measures 12" in height. WHOLE SIZE: Medium D 7-14.  
\$185 / cf272944

**OPPOSITE PAGE:**  
**EASTPORT HANDSEWN BLUCHER MOC, RANGER MOC AND RANGER BOOT**  
COLOR: Brown (shown in Ranger Moc), Black. MATERIAL: Leather. Imported. SIZE: Medium D 7-12, 13, 14.  
\$69 / blucher moc / cf262923  
\$79 / ranger moc / cf262949  
\$99 / ranger boot / cf270122  
BLUCHER MOC IN BROWN NOT AVAILABLE

**SIGNATURE FIELD WATCH**  
COLOR: Black. MATERIAL: Nylon straps with leather backing. Made in Switzerland. One size.  
\$129 / cf276039

**VINTAGE METAL FIELD WATCH**  
COLOR: Silver (shown), Gold. MATERIAL: Polished brushed metal, stainless-steel case. Made in Switzerland. One size.  
\$225 / cf270171

**CANVAS WORK JACKET**  
COLOR: Saddle. FABRIC: Cotton. Imported. Machine wash. SIZE: S-XXL.  
\$129 / cf275033

**HUNTER'S PLAID SHIRT**  
COLOR: Royal Blue/Adobe Red (on him), Mountain Blue. FABRIC: Cotton. Imported. Machine wash. SIZE: S-XXL.  
\$69 / cf266777

@ LLBEANSIGNATURE.COM / 800-650-5975

Zac Mitchell

www.art-dept.com



# Art Department



Zac Mitchell

[www.art-dept.com](http://www.art-dept.com)



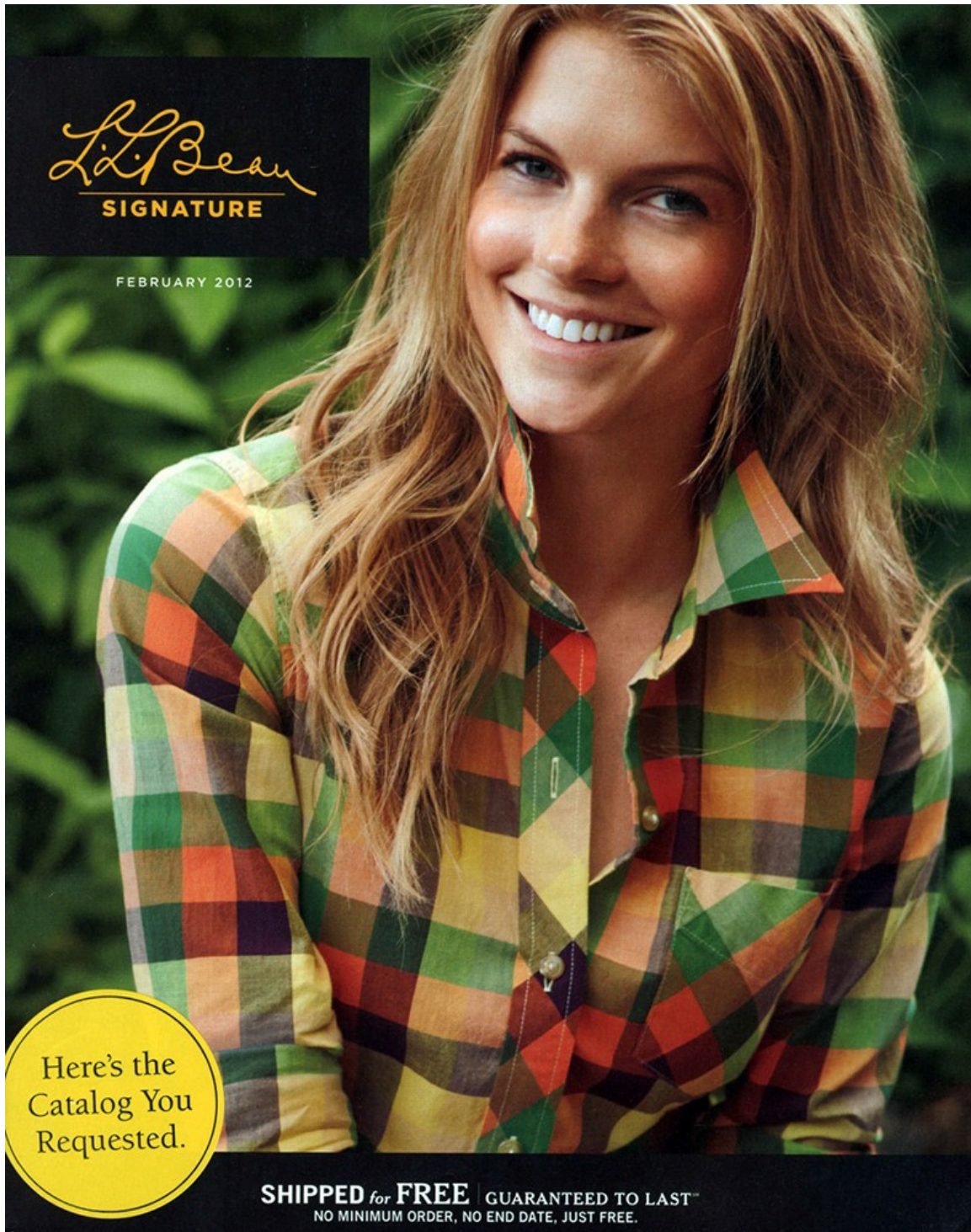
# Art Department



Zac Mitchell

[www.art-dept.com](http://www.art-dept.com)

# Art Department



*L.L. Bean*  
SIGNATURE

FEBRUARY 2012

Here's the  
Catalog You  
Requested.

**SHIPPED for FREE** | GUARANTEED TO LAST™  
NO MINIMUM ORDER, NO END DATE, JUST FREE.

Zac Mitchell

[www.art-dept.com](http://www.art-dept.com)



# Art Department



Zac Mitchell

[www.art-dept.com](http://www.art-dept.com)

# Art Department



FREE \$10  
GIFT CARD  
WITH PURCHASE  
OF \$50 OR MORE  
SEE PAGE 2

**L.L. Bean**

**SIGNATURE**

**Nº 1** | OUR SIGNATURE MARKS A NEW COLLECTION | **SPRING**  
2010

Zac Mitchell

[www.art-dept.com](http://www.art-dept.com)



# Art Department



Zac Mitchell

[www.art-dept.com](http://www.art-dept.com)

# Art Department



Zac Mitchell

[www.art-dept.com](http://www.art-dept.com)



# Art Department



*Ward + Taylor*

Zac Mitchell

[www.art-dept.com](http://www.art-dept.com)



# Art Department

**crewcuts**  
for ages 2-10.

MAKE YOUR LIST. check it twice...  
something for the little ones,  
naughty and nice... something for  
everyone at [crewcutkids.com](http://crewcutkids.com).

**LOOK 1**  
cotton-cashmere cardigan  
Cotton-cashmere cardigan. Imported. XS-XL.  
\$125.00 \$65.00

**LOOK 2**  
lightweight basket shirt  
Lightweight basket shirt. Imported. XS-XL. \$33.00 \$16.50

**LOOK 3**  
solid wool dress pant  
Solid wool dress pant. Imported. XS-XL. \$74.00 \$37.00

**LOOK 4**  
cashmere baby dress  
Cashmere baby dress. Imported. XS-XL. \$195.00

**LOOK 5**  
polka-dot earflap hat  
Polka-dot earflap hat. Imported. XS-XL. \$15.00 \$7.50

**LOOK 6**  
grey wool legacy jacket  
Grey wool legacy jacket. Imported. XS-XL. \$145.00 \$72.50

**LOOK 7**  
secret wash banker-stripe shirt  
Secret wash banker-stripe shirt. Imported. XS-XL. \$59.00 \$29.50

**LOOK 8**  
paint-splatter jean  
Paint-splatter jean. Imported. XS-XL. \$58.00 \$29.00

**LOOK 9**  
black watch tuxedo jacket  
Black watch tuxedo jacket. Imported. XS-XL. \$112.00 \$56.00

**LOOK 10**  
secret wash white poplin shirt  
Secret wash white poplin shirt. Imported. XS-XL. \$39.00 \$19.50

**LOOK 11**  
levy's selvedge rinse jean  
Levy's selvedge rinse jean. Imported. XS-XL. \$129.00 \$64.50

**LOOK 12**  
cashmere v-neck sweater  
Cashmere v-neck sweater. Imported. XS-XL. \$105.00

**LOOK 13**  
banker-stripe oxford shirt  
Banker-stripe oxford shirt. Imported. XS-XL. \$74.00 \$37.00

**LOOK 14**  
wool herringbone suit pant  
Wool herringbone suit pant. Imported. XS-XL. \$145.00 \$72.50

**LOOK 15**  
brown leather jack purcell sneakers  
Brown leather jack purcell sneakers. Imported. XS-XL. \$129.00 \$64.50

© 2011 CREWCUTKIDS.COM

Zac Mitchell

[www.art-dept.com](http://www.art-dept.com)



# Art Department



Zac Mitchell

[www.art-dept.com](http://www.art-dept.com)

# Art Department



Zac Mitchell

[www.art-dept.com](http://www.art-dept.com)



# Art Department

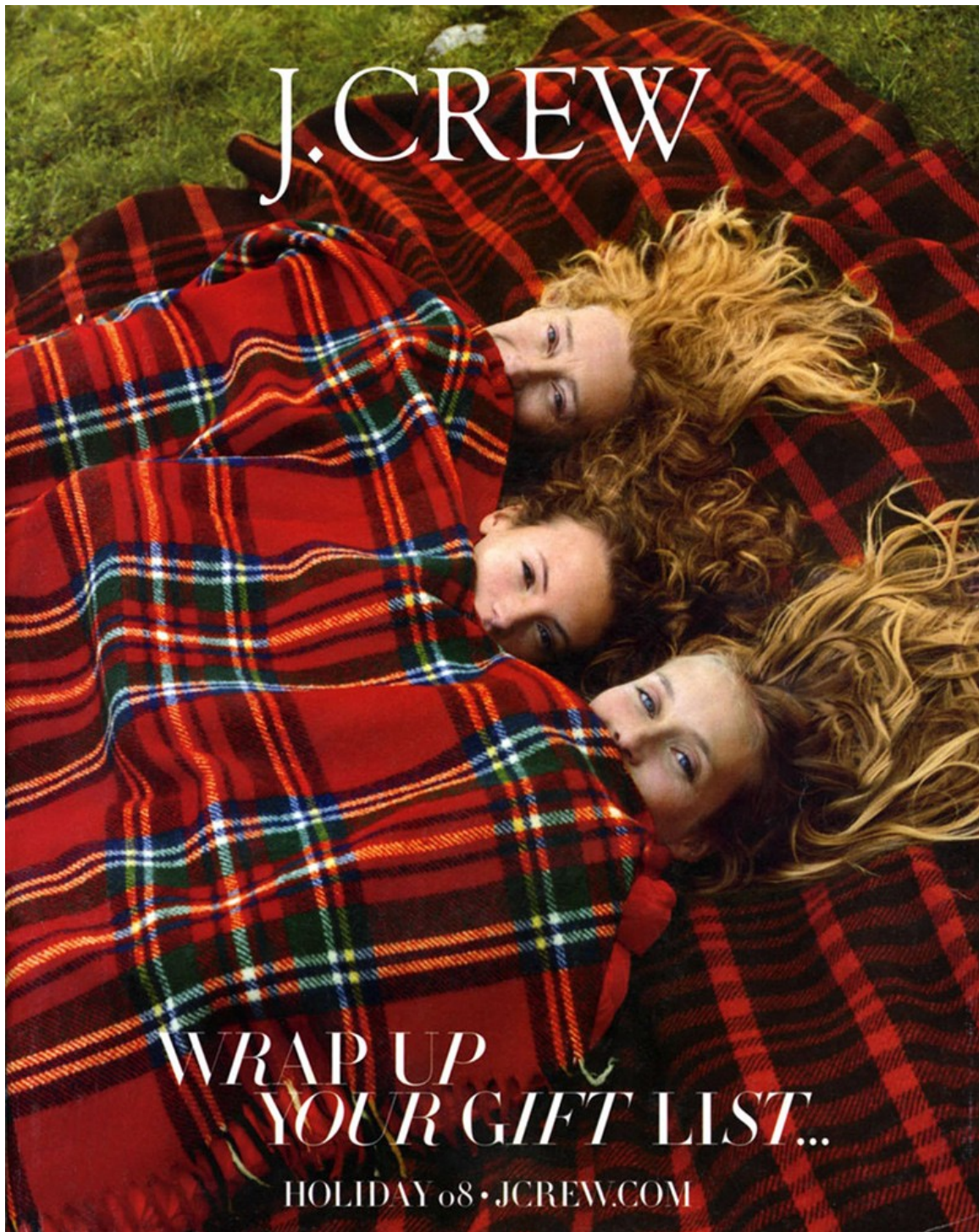


Zac Mitchell

[www.art-dept.com](http://www.art-dept.com)



# Art Department



Zac Mitchell

[www.art-dept.com](http://www.art-dept.com)



# Art Department



Zac Mitchell

[www.art-dept.com](http://www.art-dept.com)



# Art Department



Zac Mitchell

[www.art-dept.com](http://www.art-dept.com)



# Art Department



Zac Mitchell

[www.art-dept.com](http://www.art-dept.com)



# Art Department



Zac Mitchell

[www.art-dept.com](http://www.art-dept.com)



# Art Department



Zac Mitchell

[www.art-dept.com](http://www.art-dept.com)



# Art Department



Zac Mitchell

[www.art-dept.com](http://www.art-dept.com)



# Art Department



Zac Mitchell

[www.art-dept.com](http://www.art-dept.com)



# Art Department



Zac Mitchell

[www.art-dept.com](http://www.art-dept.com)



# Art Department



Zac Mitchell

[www.art-dept.com](http://www.art-dept.com)



# Art Department



Zac Mitchell

[www.art-dept.com](http://www.art-dept.com)



# Art Department



Zac Mitchell

[www.art-dept.com](http://www.art-dept.com)

# Art Department



Zac Mitchell

[www.art-dept.com](http://www.art-dept.com)



# Art Department

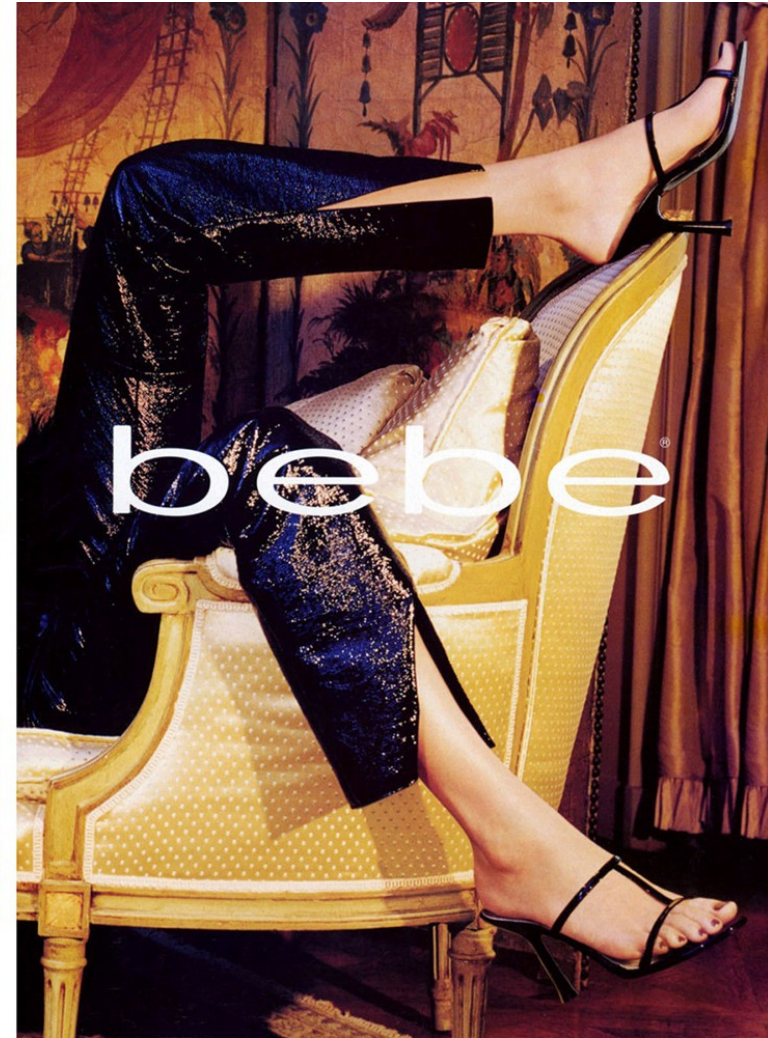


Zac Mitchell

[www.art-dept.com](http://www.art-dept.com)



# Art Department

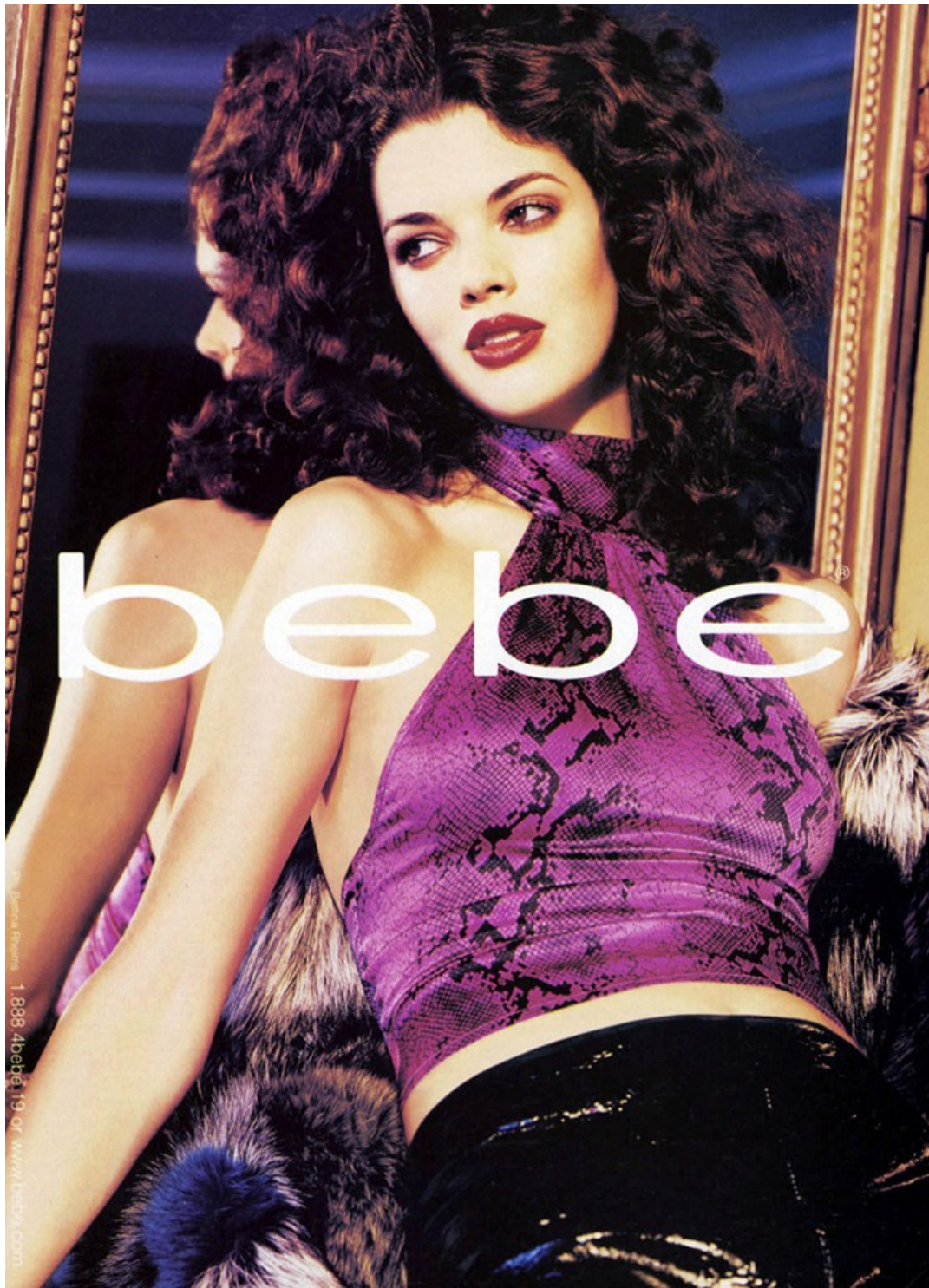


Zac Mitchell

[www.art-dept.com](http://www.art-dept.com)



# Art Department



Zac Mitchell

[www.art-dept.com](http://www.art-dept.com)



# Art Department

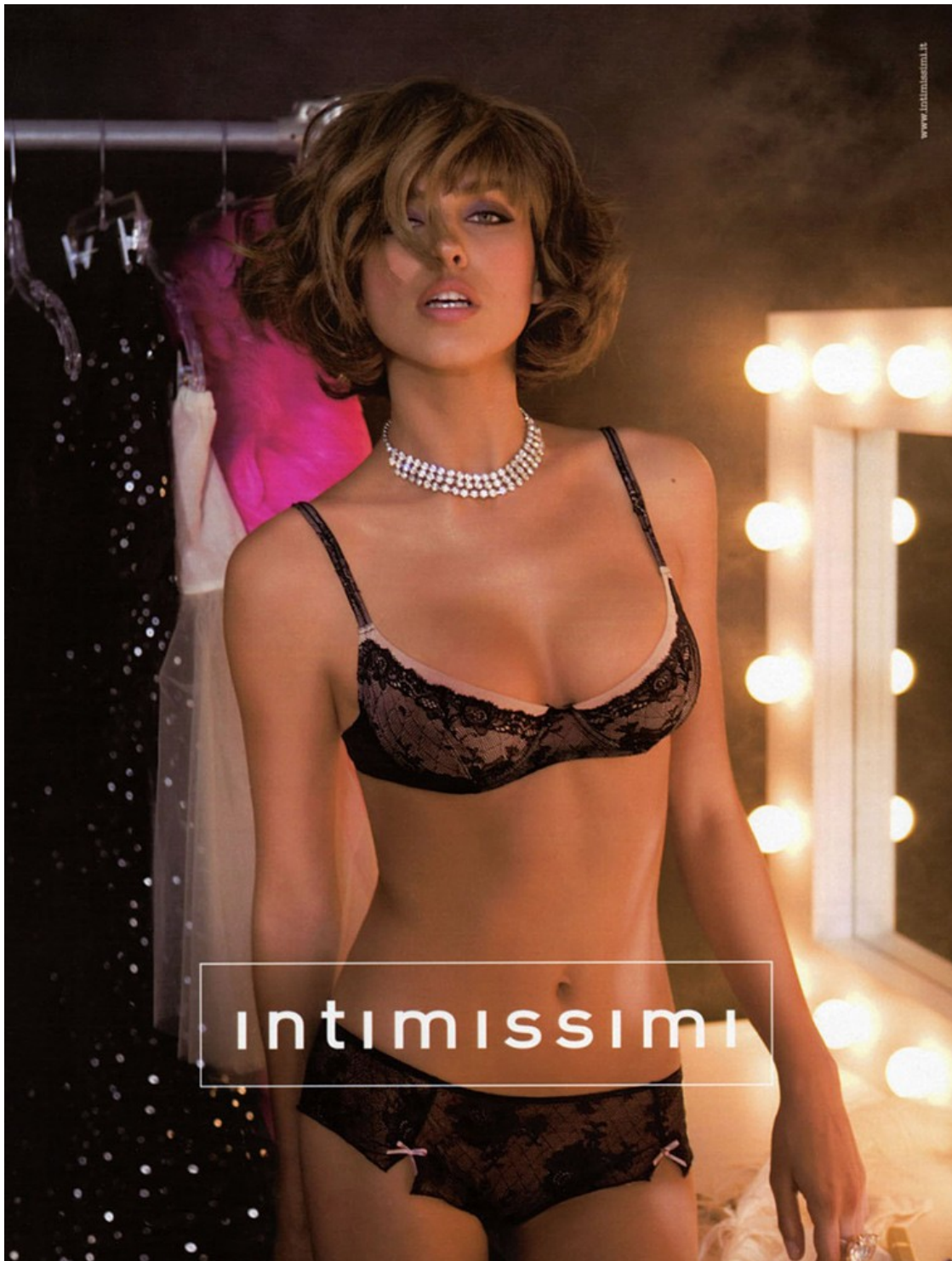


Zac Mitchell

[www.art-dept.com](http://www.art-dept.com)



# Art Department



Zac Mitchell

[www.art-dept.com](http://www.art-dept.com)

# Art Department

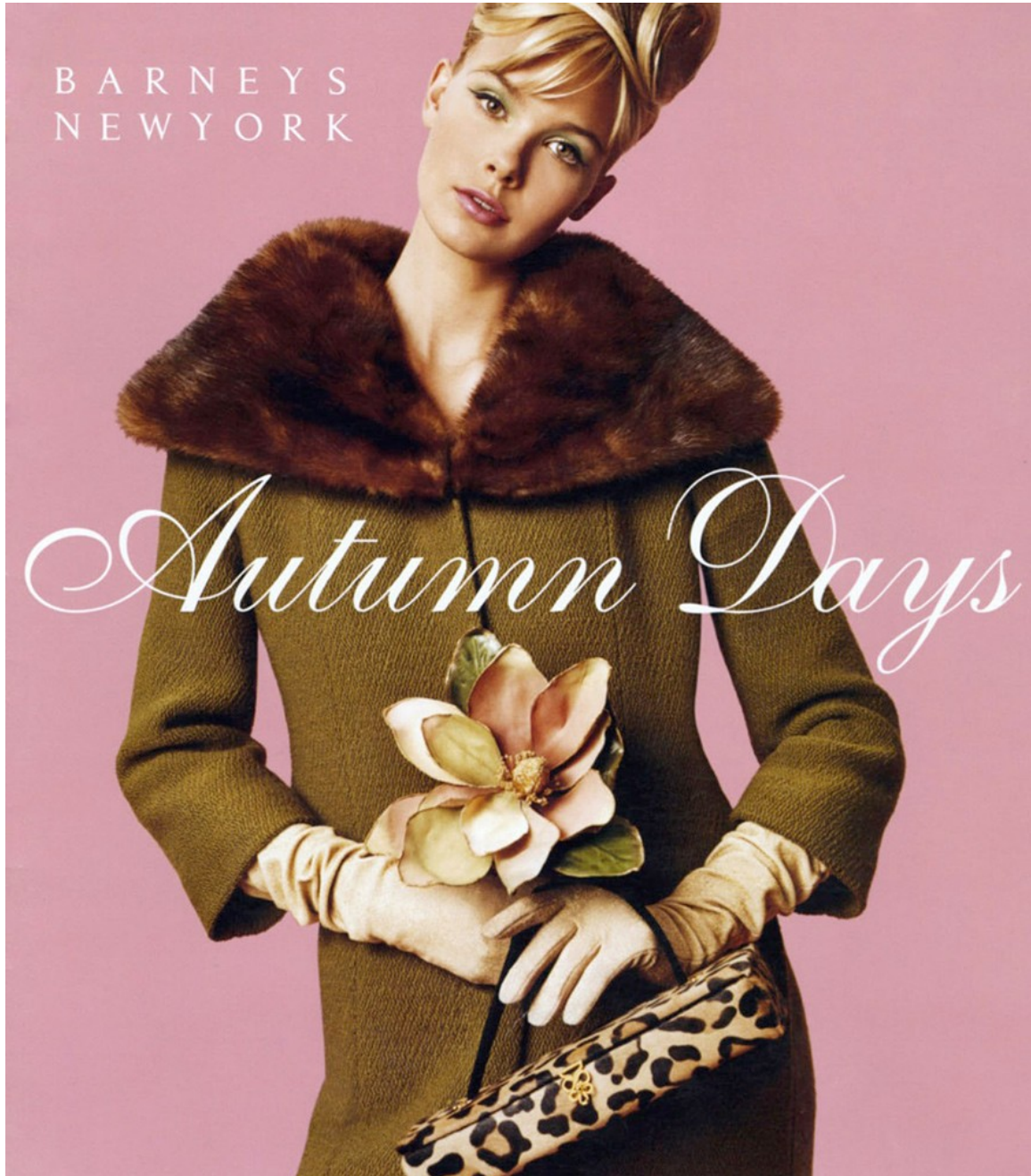


Zac Mitchell

[www.art-dept.com](http://www.art-dept.com)



# Art Department



Zac Mitchell

[www.art-dept.com](http://www.art-dept.com)

# Art Department

*When the frost is on the punkin  
and the fodder's in the shock,  
And you hear the kyouck  
and gobble of the struttin' turkey-cock,  
And the clackin' of the guineys,  
and the cluckin' of the hens,  
And the rooster's hallylooyer  
as he tiptoes on the fence;*

Pink and green tweed sheath dress with velvet trim \$450.  
Satin embroidered bird clutch in nude. Also available in black, pearl, yellow and aqua \$935.  
Suede silk lined long gloves in pink. Also available in black, tan and green \$245.

A fashion advertisement featuring a woman with blonde hair styled in a 1920s-inspired bob with a yellow flower. She is wearing a sleeveless, knee-length gold tweed dress with a matching velvet belt tied in a bow. She is also wearing long, light-colored gloves and holding a small, ornate clutch bag. To her right is a large, golden Eiffel Tower prop. The background is a solid light pink color.

Zac Mitchell

[www.art-dept.com](http://www.art-dept.com)



# Art Department



Silk twill foliage print shirt in lavender/brown.  
Also available in green/pink \$295.  
Tweed wide leg trousers in light brown.  
Also available in dark tweed \$295.

## Zac Mitchell

[www.art-dept.com](http://www.art-dept.com)



# Art Department



## Zac Mitchell

[www.art-dept.com](http://www.art-dept.com)



# Art Department



happy to unwind

thermos®  
14000 gas grill 139.99  
mosaic bistro table and  
(2) chair set 149.99  
decorative cranes  
39.99

copper finish  
oil lamps 9.99  
fire bowl 59.99  
fire pit bench 29.99  
string lights 8.88  
copper finish torch  
light 14.99

happy inside



shop in-store or online  
at target.com

©2003 Target Stores. The Bullseye Design and Target are registered trademarks of Target Brands, Inc. All rights reserved.

Zac Mitchell

[www.art-dept.com](http://www.art-dept.com)



# Art Department



Zac Mitchell

[www.art-dept.com](http://www.art-dept.com)



# Art Department



Zac Mitchell

[www.art-dept.com](http://www.art-dept.com)

# Art Department



Zac Mitchell

[www.art-dept.com](http://www.art-dept.com)