

Art Department



Beverley Hyde

www.art-dept.com

Art Department



Beverley Hyde

www.art-dept.com

Art Department



Beverley Hyde

www.art-dept.com

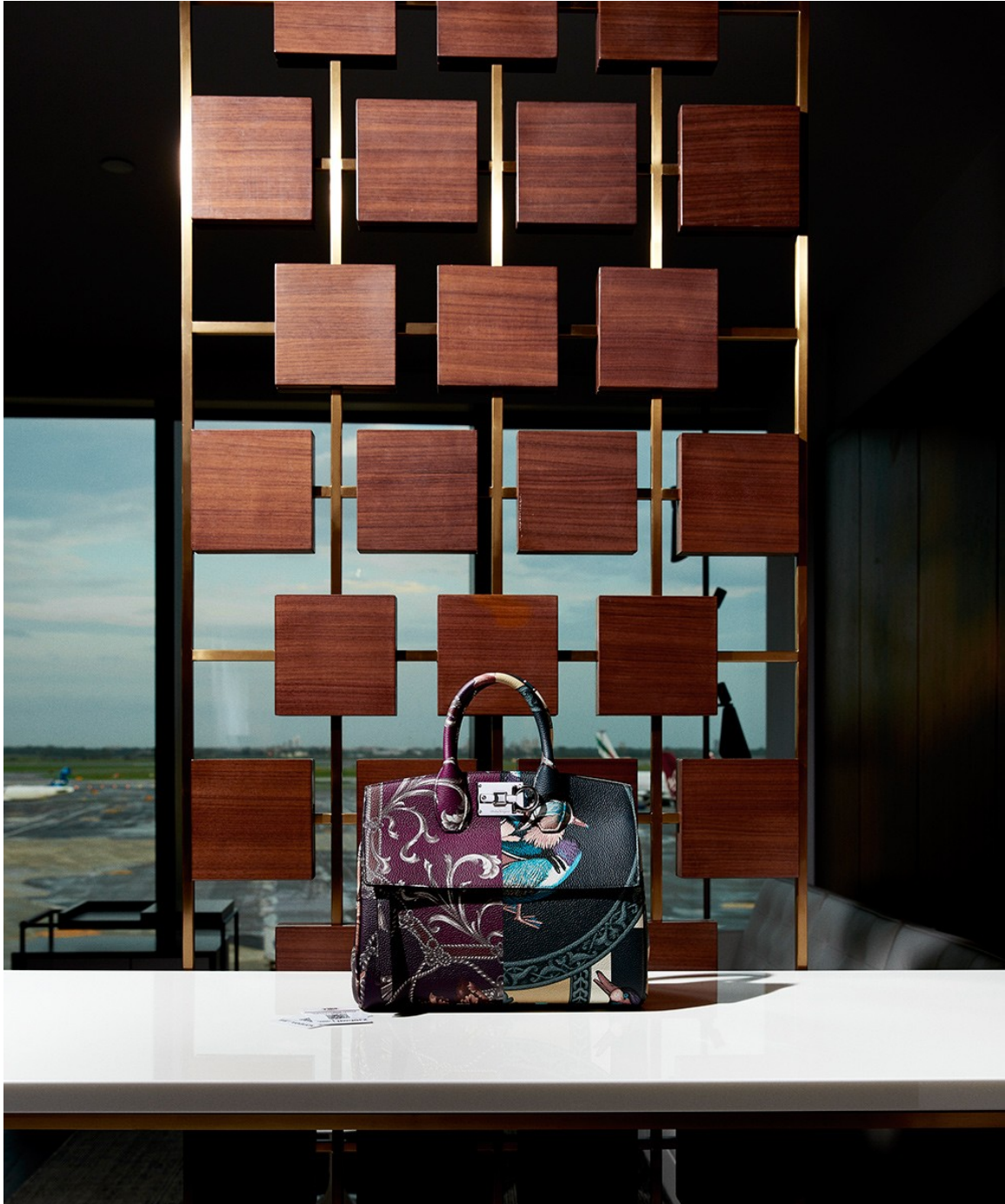
Art Department



Beverley Hyde

www.art-dept.com

Art Department



Beverley Hyde

www.art-dept.com

Art Department



Beverley Hyde

www.art-dept.com

Art Department



Beverley Hyde

www.art-dept.com

Art Department



Beverley Hyde

www.art-dept.com

Art Department



Beverley Hyde

www.art-dept.com

Art Department



Beverley Hyde

www.art-dept.com

Art Department



Beverley Hyde

www.art-dept.com

Art Department



Beverley Hyde

www.art-dept.com

Art Department



Beverley Hyde

www.art-dept.com

Art Department



Beverley Hyde

www.art-dept.com

Art Department



ROMANTIC IMPRESSION
This page: Maxi tote bag,
Gucci. Opposite page:
Necklace, Chanel.

172 THE MALL AT MILLENIA HOLIDAY 2018

Beverley Hyde

www.art-dept.com

Art Department



Beverley Hyde

www.art-dept.com

Art Department



Beverley Hyde

www.art-dept.com

Art Department



INDEPENDENT SPIRIT
Bold and unbridled accessories.

Photographs by Robert Tardio

Beverley Hyde

www.art-dept.com

Art Department



TOO'S Tall "Winter
Gommini" boots in tan
suede. Italy. \$725.

800 967 3788 63

Beverley Hyde

www.art-dept.com

Art Department



Beverley Hyde

www.art-dept.com

Art Department



Beverley Hyde

www.art-dept.com

Art Department



On the Town STEP INTO REFINEMENT.

Photographs by Robert Tardio

Beverley Hyde

www.art-dept.com

Art Department



Beverley Hyde

www.art-dept.com

Art Department



Beverley Hyde

www.art-dept.com

Art Department



Beverley Hyde

www.art-dept.com

Art Department



Beverley Hyde

www.art-dept.com

Art Department



Beverley Hyde

www.art-dept.com

Art Department

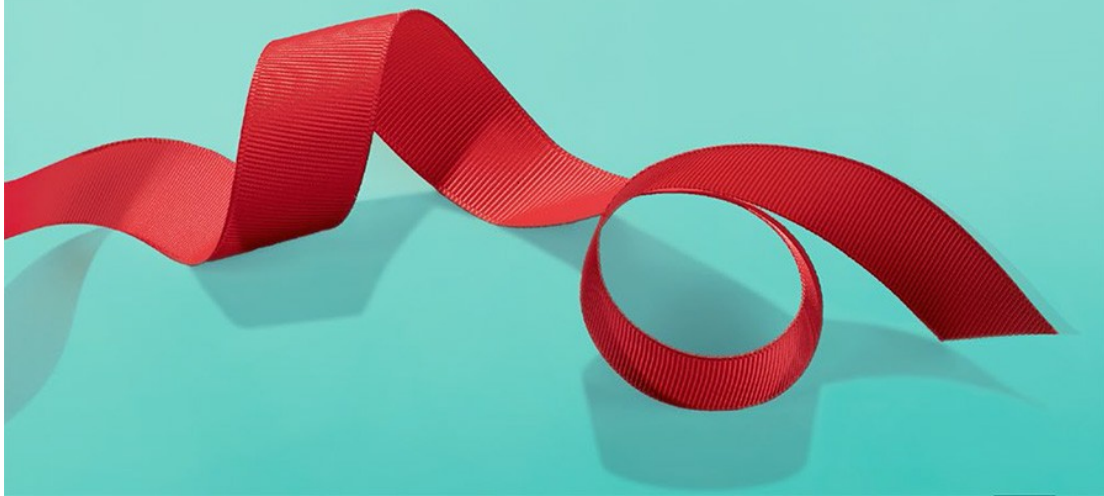


Beverley Hyde

www.art-dept.com

Art Department

A VERY, VERY
TIFFANY HOLIDAY



Beverley Hyde

www.art-dept.com

Art Department



Beverley Hyde

www.art-dept.com

Art Department



Beverley Hyde

www.art-dept.com

Art Department



Beverley Hyde

www.art-dept.com

Art Department



Beverley Hyde

www.art-dept.com

Art Department

ACCESSORIES

Leather clutch, SERGIO ROSSI, \$1,395, at Sergio Rossi, Las Vegas. Suede sandal, SALVATORE FERRAGAMO, price on request, visit salvatorreferragamo.com



OVER THE RAINBOW

Toss out the old rules governing evening attire. You can wear any color—or all of them at once

EDITED BY MARIA DUEÑAS JACOBS

Svend Lindebo (Styled by Beverley Hyde at Mares & Associates); for details, see Shopping Guide

ELLE 169

Beverley Hyde

www.art-dept.com

Art Department

ACCESSORIES

CRAFT SERVICES
Traditional embroideries from points East and West add a worldly touch to espadrilles and carryalls

Embroidered handbag, THE ROW, price on request, at The Row, L.A.

From top: Embroidered-velvet espadrille, GIUSEPPE ZANOTTI DESIGN, \$695, visit giuseppezanottidesign.com; Embroidered-canvas espadrille, SERGIO ROSSI, \$1,125, at Sergio Rossi, Las Vegas

ELLE 173



Beverley Hyde

www.art-dept.com

Art Department

ACCESSORIES

ELLE EXCLUSIVE

BLUE CRUSH

Coach serves up a true-blue, superluxe homage to its all-American roots

Leather and python handbag, COACH, \$1,200, at select Coach stores nationwide

It's been 75 years since a certain small family-owned Manhattan workshop started making sturdy cowhide purses inspired by the soft leather of baseball mitts. Coach went on to make an indelible mark on American style via the colorful leathers and clean shapes first introduced by Bonnie Cashin in the '60s. Now it's going one step further with creative director Stuart Vevers's upscale range, Coach 1941, including this luxurious bag created just for ELLE, which marries glove-tanned pebble leather with exotic touches like python straps for a new, relaxed luxury. Looks like a home run to us.

Stuart Vevers (prop styling by Beverley Hyde for Mowat & Associates); for details, see Shopping Guide

284 | 11.17

Beverley Hyde

www.art-dept.com

Art Department

ACCESSORIES

GEM DANDY

Bulgari pulls out all the stops with a pair of Byzantine-inspired beauties

Embellished-python handbag; rose gold, diamond, emerald, and sapphire necklace, both, BULGARI; prices on request, call 800-BULGARI

270 E

Svend Lindbohm (prop styling by Beverley Hyde for Maxwell & Associates); for details, see Shopping Guide

Beverley Hyde

www.art-dept.com

Art Department



Beverley Hyde

www.art-dept.com

Art Department



Beverley Hyde

www.art-dept.com

Art Department



Beverley Hyde

www.art-dept.com

Art Department



Beverley Hyde

www.art-dept.com

Art Department



Beverley Hyde

www.art-dept.com

Art Department



Beverley Hyde

www.art-dept.com

Art Department



Beverley Hyde

www.art-dept.com

Art Department



Beverley Hyde

www.art-dept.com

Art Department



Beverley Hyde

www.art-dept.com

Art Department



Beverley Hyde

www.art-dept.com

Art Department



Beverley Hyde

www.art-dept.com

Art Department



Beverley Hyde

www.art-dept.com

Art Department



Beverley Hyde

www.art-dept.com

Art Department



Beverley Hyde

www.art-dept.com

Art Department



Beverley Hyde

www.art-dept.com

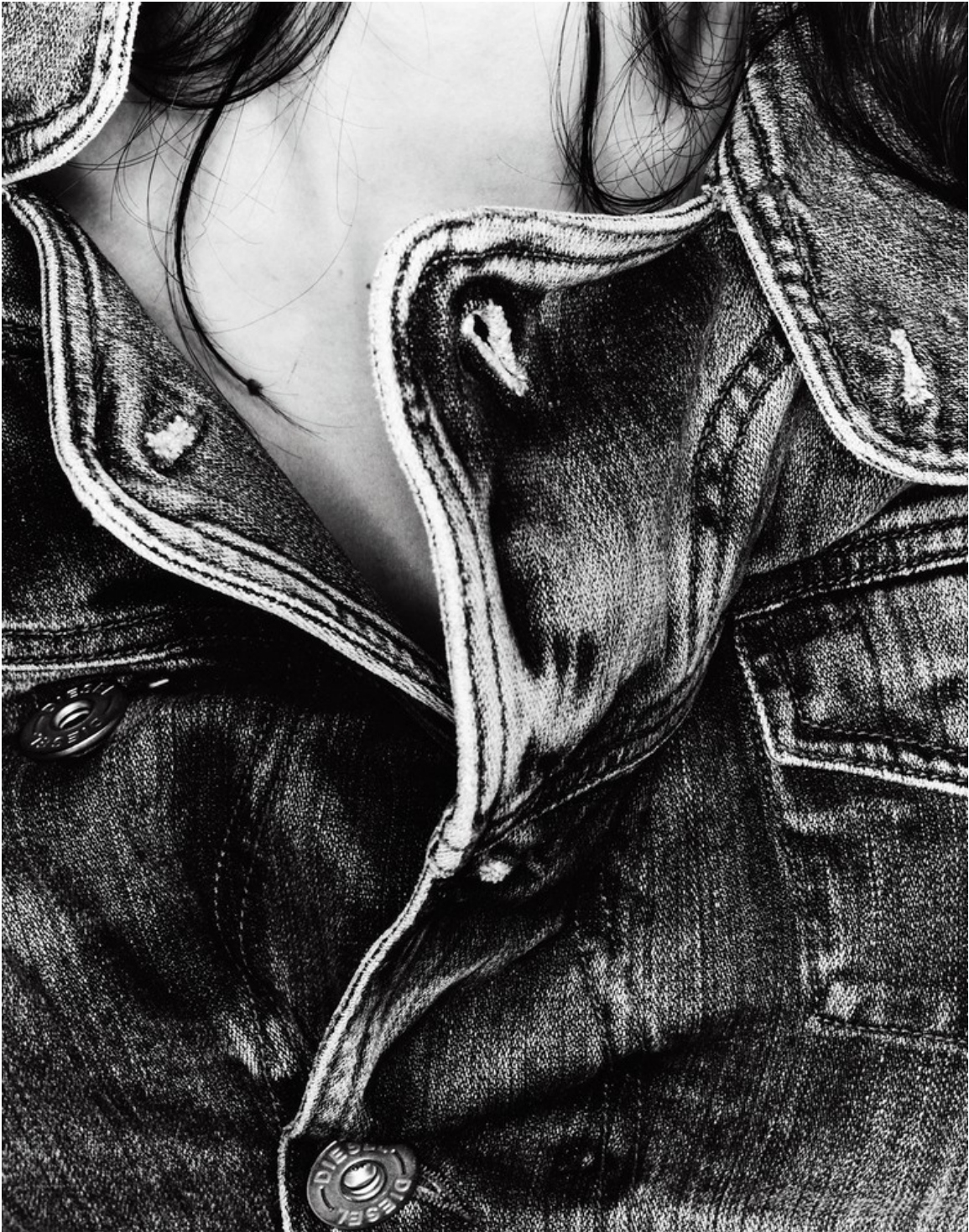
Art Department



Beverley Hyde

www.art-dept.com

Art Department



Beverley Hyde

www.art-dept.com

Art Department



Beverley Hyde

www.art-dept.com

Art Department



Beverley Hyde

www.art-dept.com

Art Department



Beverley Hyde

www.art-dept.com

Art Department



Beverley Hyde

www.art-dept.com

Art Department



Beverley Hyde

www.art-dept.com

Art Department



Beverley Hyde

www.art-dept.com

Art Department



Beverley Hyde

www.art-dept.com

Art Department



Beverley Hyde

www.art-dept.com

Art Department



Beverley Hyde

www.art-dept.com

Art Department



Beverley Hyde

www.art-dept.com

Art Department



Beverley Hyde

www.art-dept.com

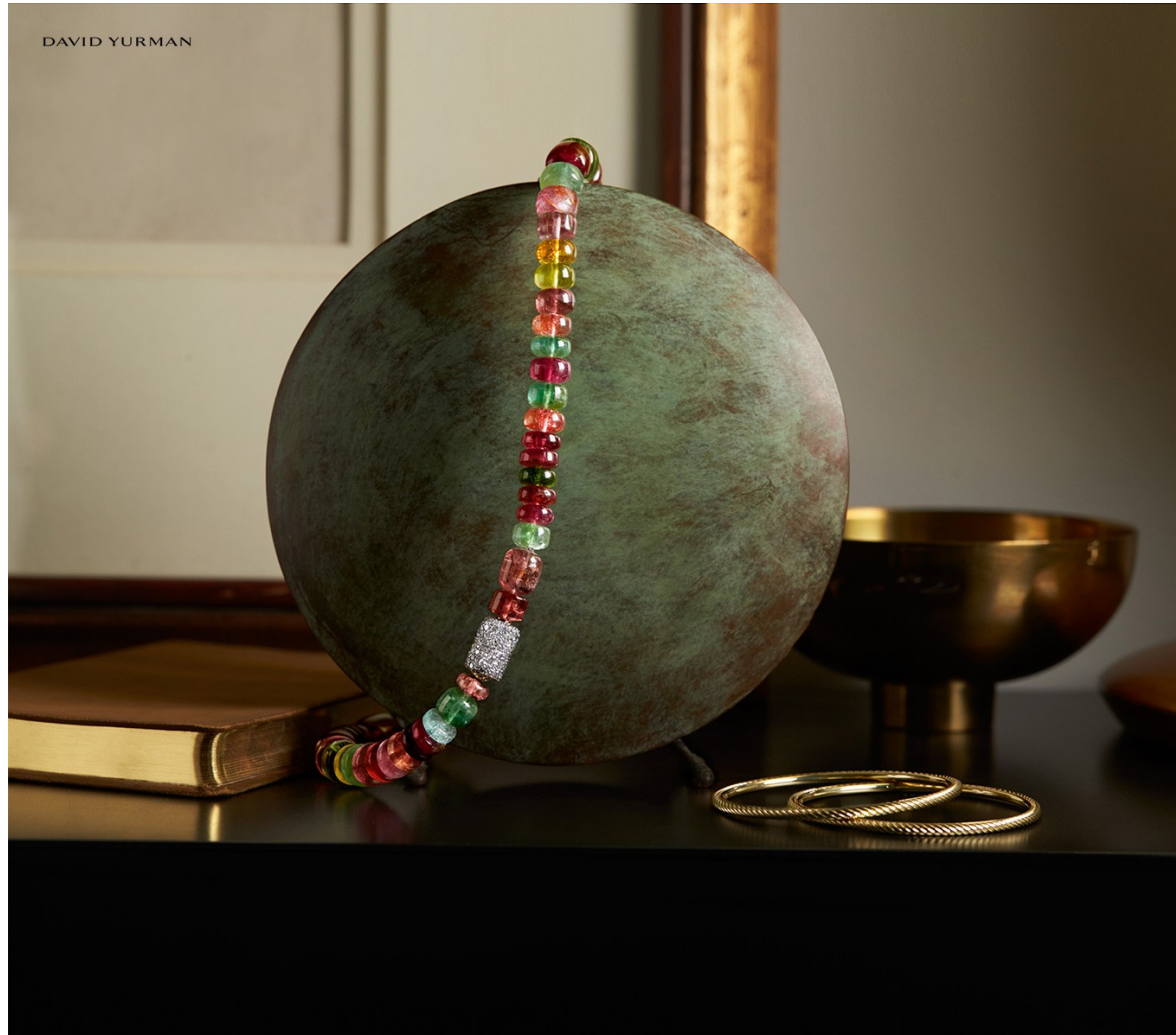
Art Department



Beverley Hyde

www.art-dept.com

Art Department



Beverley Hyde

www.art-dept.com

Art Department



DAVID YURMAN

Beverley Hyde

www.art-dept.com

Art Department



DAVID YURMAN

Beverley Hyde

www.art-dept.com

Art Department



Beverley Hyde

www.art-dept.com

Art Department



Beverley Hyde

www.art-dept.com

Art Department



Beverley Hyde

www.art-dept.com

Art Department

CHALK FRENCH Calf CLUTCH \$995



Calvin Klein
collection

654 MADISON AVENUE NEW YORK 212.292.9000 calvinkleincollection.com

Beverley Hyde

www.art-dept.com

Art Department



Beverley Hyde

www.art-dept.com

Art Department

on solid
GROUND

The landscape always changes. But the shoes?
They're your bedrock. Pick a pair that nails the base elements,
in a finish you wouldn't want to walk around without.

GUCCI
Black leather slip-on
with bamboo heel
detail, \$620. Men's
Shoes. Select stores.

BLOOMINGDALES.COM 37

Beverley Hyde

www.art-dept.com

Art Department



Beverley Hyde

www.art-dept.com

Art Department



GORDON RUSH
Dark brown leather cap-toe lace-up, also in black, \$265. Brandy wingtip lace-up, also in black, \$265. Men's Shoes. Wingtip in select stores.

MARCH 13-23
TRIPLE POINTS
FOR EVERYONE ON EVERYTHING®

BLOOMINGDALES.COM 43

Beverley Hyde

www.art-dept.com

Art Department



**SALVATORE
FERRAGAMO**
Brown/cream leather
two-tone loafer, \$595.
Brown python bit
loafer, \$1,250.
Men's Shoes. Bit loafer
at 59th Street and
Aventura only.

Beverly Hyde

www.art-dept.com

Art Department



Beverley Hyde

www.art-dept.com

Art Department



Beverley Hyde

www.art-dept.com

Art Department



botkier

Beverley Hyde

www.art-dept.com

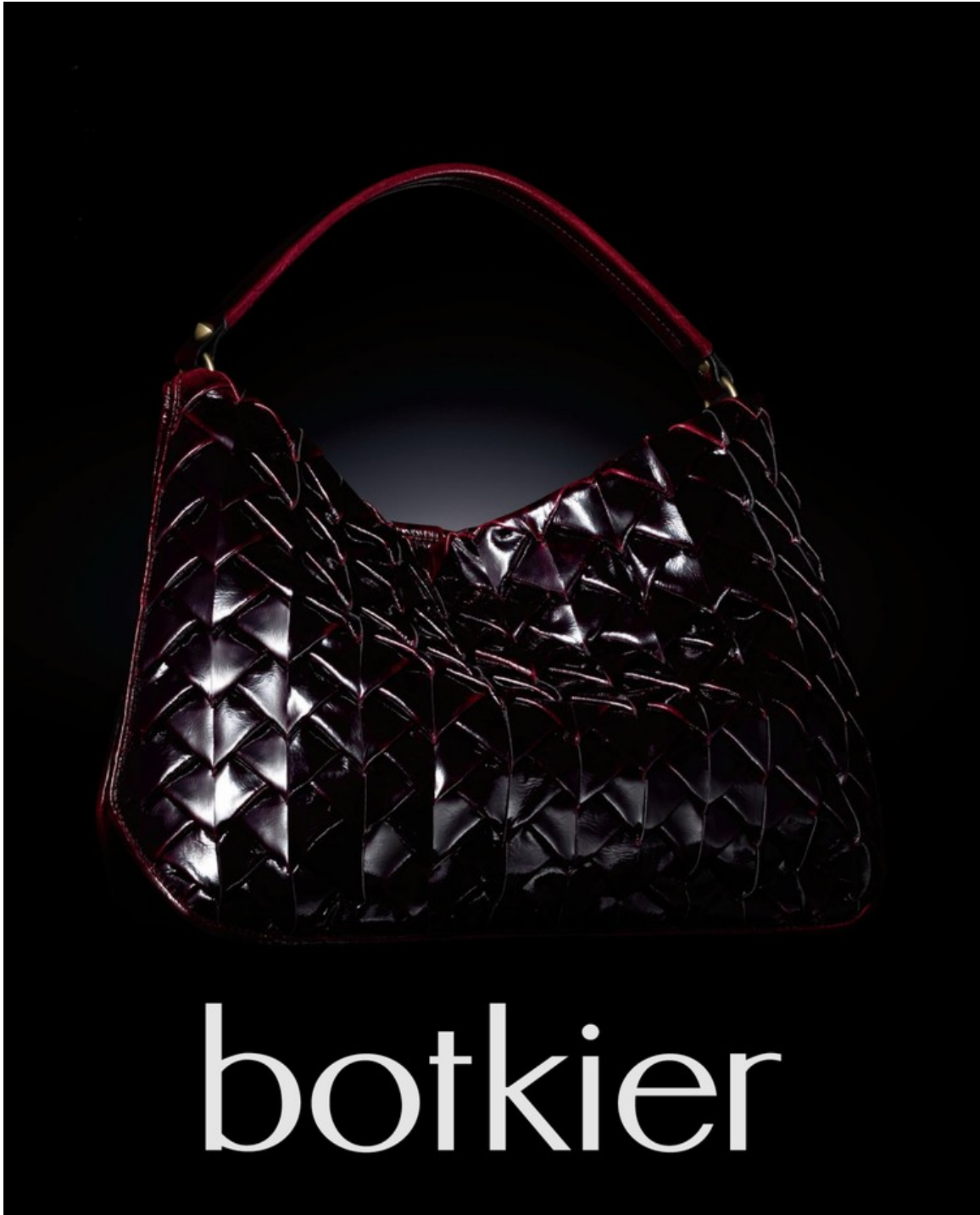
Art Department



Beverley Hyde

www.art-dept.com

Art Department



botkier

Beverley Hyde

www.art-dept.com

Art Department



Beverley Hyde

www.art-dept.com

Art Department



DAVID YURMAN

Beverley Hyde

www.art-dept.com

Art Department



Beverley Hyde

www.art-dept.com

Art Department



DAVID YURMAN

Beverley Hyde

www.art-dept.com

Art Department



Beverley Hyde

www.art-dept.com

Art Department



Beverley Hyde

www.art-dept.com

Art Department

**MASTER
PIECES**

ACCESSORIZING BECOMES AN ART FORM WITH OUR CAREFULLY CURATED
COLLECTION OF FOOTWEAR, TIMEPIECES, AND JEWELRY

PHOTOGRAPHY BY
PATRICIA HEAL

STYLING BY
CANNON

SET STYLING BY
BEVERLEY HYDE

STILL LIFE Left to right: Lise sandal, \$248, Cole Haan, Nudist sandal, \$398, Stuart Weitzman, Christian Louboutin So Kate pump, \$675, available at Neiman Marcus and Saks Fifth Avenue, Sandal bootie, \$1,450, Salvatore Ferragamo, Runway ankle boot, \$775, Emporio Armani, Ino Kanda lace-up bootie, \$795, available at Informs, Patent leather pump with ankle strap, \$625, Emporio Armani, Parure open-toe heel, \$1,700, Louis Vuitton, Queen pump, \$375, Stuart Weitzman.



162 SOMERSET COLLECTION HOLIDAY 2014

SOMERSET COLLECTION HOLIDAY 2014 163

Beverley Hyde

www.art-dept.com

Art Department

STELLA MCCARTNEY

Part of the label's Falabella collection, known for its iconic chain link trim and lengthy roster of A-list fans, this convertible design was made for cool girls on the go. Featuring an optional strap, this three-in-one wonder can be carried as a wallet, clutch or crossbody. Of course we had to put our own stamp on the style: We were enamored by the chic, Only Ours faux-snakeskin print that's both ultra-luxe and everyday-neutral. But you'll have to be quick to get your hands on this limited edition—only 100 will be available at select Bloomingdale's locations or by special order.

STELLA MCCARTNEY
Brooze faux-snakeskin Falabella wallet on chain, \$715.
Cul de Sac Handbags. Select stores.

100%

A Stella McCartney Falabella wallet on chain, featuring a faux-snakeskin print and a chain link trim, displayed against a gold geometric background. The wallet is shown in a three-quarter view, highlighting its textured surface and the intricate chain link detail. The background consists of gold-colored geometric shapes, creating a modern and sophisticated aesthetic.

Beverley Hyde

www.art-dept.com

Art Department



ALEXANDER WANG

Just when we thought we couldn't be any more obsessed with the label's best-selling Abby sandal—marked by its signature notched heel with metal detailing—we had the amazing opportunity to give the day-to-play style a distinctively Bloomingdale's spin. After going back and forth with the design team, we landed on this edgy-meets-glam iteration tricked out with allover dome studs—we love the way the silver hardware shines against sumptuous suede. Only 150 (insanely perfect) pairs are available in select stores and online.

Black suede studded Abby sandal, \$595.
Designer Shoe Salon. Select stores.



Beverley Hyde

www.art-dept.com

Art Department



Beverley Hyde

www.art-dept.com

Art Department



Beverley Hyde

www.art-dept.com

Art Department



Beverley Hyde

www.art-dept.com

Art Department



Beverley Hyde

www.art-dept.com

Art Department



Beverley Hyde

www.art-dept.com

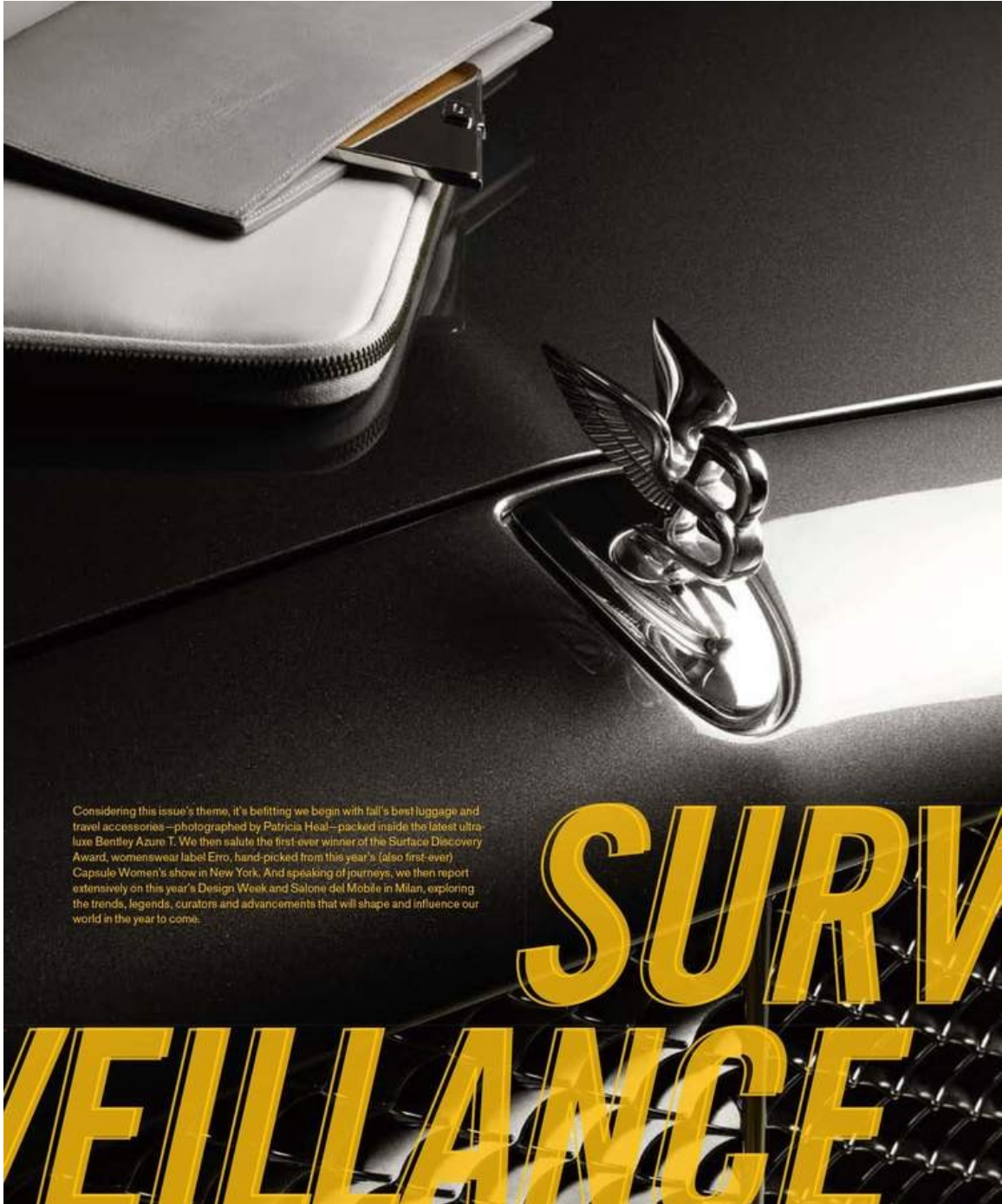
Art Department



Beverley Hyde

www.art-dept.com

Art Department



Considering this issue's theme, it's befitting we begin with fall's best luggage and travel accessories—photographed by Patricia Heal—packed inside the latest ultra-luxe Bentley Azure T. We then salute the first-ever winner of the Surface Discovery Award, womenswear label Erro, hand-picked from this year's (also first-ever) Capsule Women's show in New York. And speaking of journeys, we then report extensively on this year's Design Week and Salone del Mobile in Milan, exploring the trends, legends, curators and advancements that will shape and influence our world in the year to come.

Beverley Hyde

www.art-dept.com

Art Department

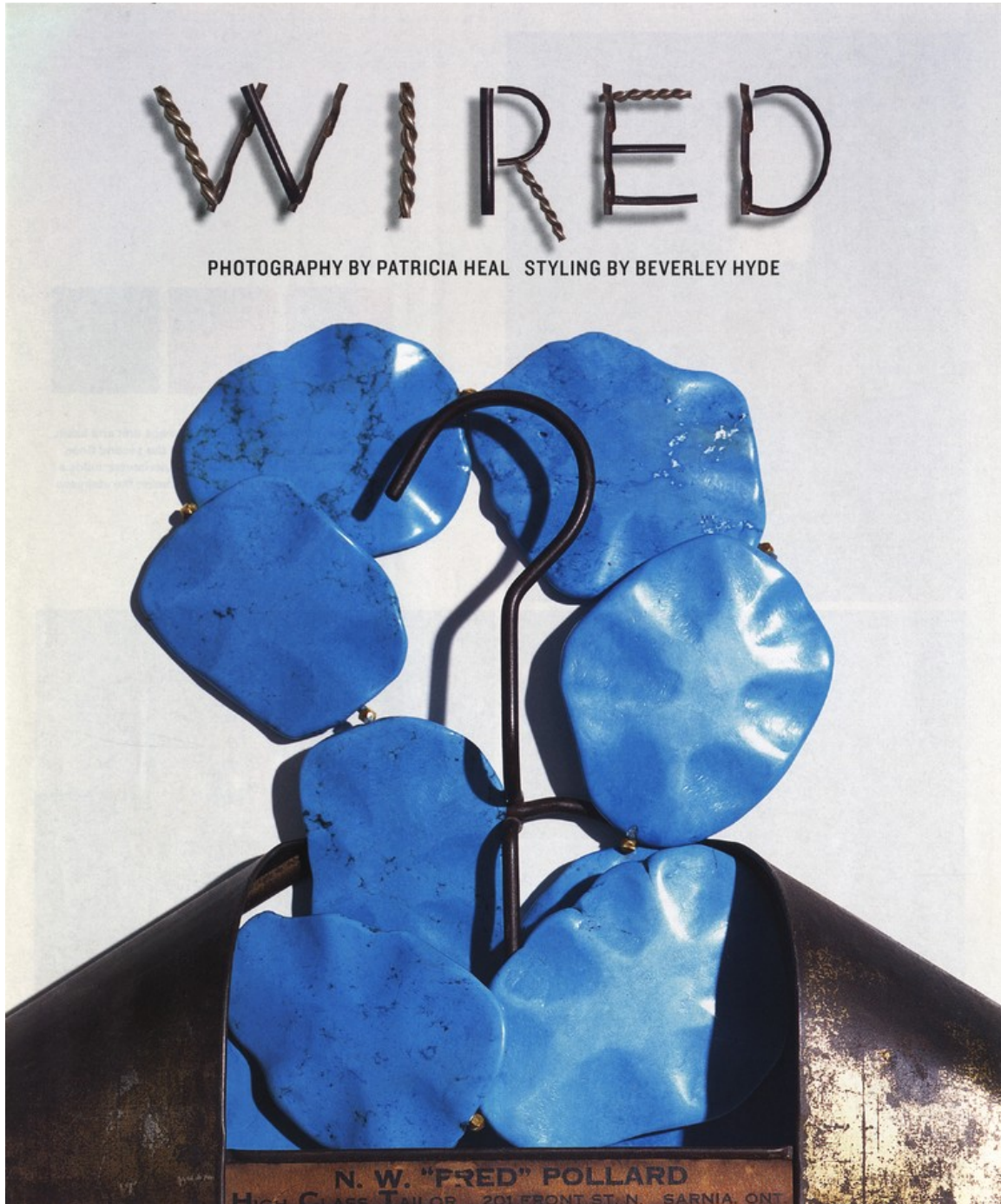


ART DIRECTOR: CHRISTOPHER MOZSARY; PHOTOGRAPHER: PATRICIA HEAL; STYLIST: BEVERLEY HYDE; FASHION EDITOR: GREGORY WEIN; DIGITAL TECH/PHOTO ASSISTANT: SASHA MASLOV; SPECIAL THANKS: WALTER D'URSO AT MANHATTAN MOTORCARS

Beverley Hyde

www.art-dept.com

Art Department



Beverley Hyde

www.art-dept.com

Art Department

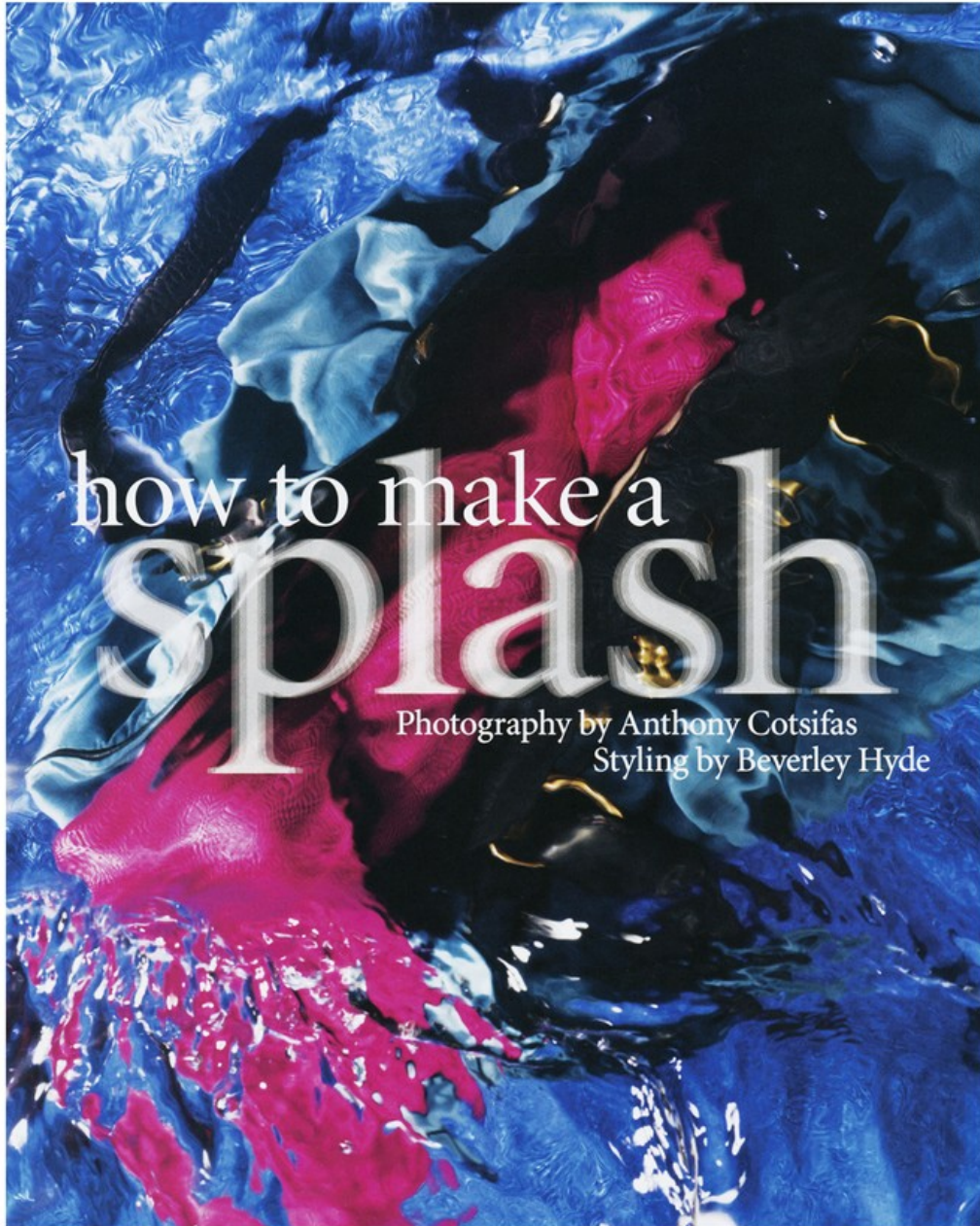


This page: Turquoise, gold, and sterling-silver ring, \$770, by **Nava Zahavi**, at **Fragments**; silk tie, \$159, by **Paul Smith**. Opposite: Turquoise and gold necklace, \$395, by **Marisa Perry Atelier**.

Beverley Hyde

www.art-dept.com

Art Department



Beverley Hyde

www.art-dept.com

Art Department



Beverley Hyde

www.art-dept.com

Art Department



Beverley Hyde

www.art-dept.com

Art Department



ON THE ROAD

The early Beat Generation—those “children of the American bop night”—loosened cultural barriers while dressing relatively buttoned up. Add some jazz to your wardrobe with a Burberry Prorsum polka-dot skinny tie (\$195) and slim-fit dress shirt (\$295), and a Burberry Brit calfskin leather jacket (\$1,095). Rolex Oyster Perpetual Explorer (\$6,200). First edition of *On the Road* (\$6,500); all books from Imperial Fine Books. For details, go to page 125.

Beverley Hyde

www.art-dept.com

Art Department



Beverley Hyde

www.art-dept.com

Art Department

EVERYTHING BUT THE SNEAKER

Because man cannot survive on canvas kicks alone

PHOTOGRAPHS BY DAVID PRINCE

THE SUMMER MONK-STRAP

Though the style dates back many hundreds of years to medieval monastic orders—yes, actual monks actually wore them—monk-strap loafers, with their shiny buckled straps, have become the dressiest and boldest option in the world of laceless casual shoes. For our money, this pair in pebble-grain calf just might be the boldest: Between the color (dirty white) and the elaborate broguing, these aren't the kind of shoes you just throw on to run an errand. Then again, they're not exactly what you'd wear to work, either, unless said work entails mixing it up at boozy lawn parties. In which case: by all means.

Pebble-grain-calfskin monk-straps (\$575) by O'Keeffe; mrporter.com.

46

ESQUIRE'S BIG BLACK BOOK

SPRING 2013

Beverley Hyde

www.art-dept.com

Art Department



Beverley Hyde

www.art-dept.com