

Art Department

Van Cleef & Arpels



Andrea Huelse

www.art-dept.com

Art Department



Andrea Huelse

www.art-dept.com

Art Department



Andrea Hulse

www.art-dept.com

Art Department



Andrea Huelse

www.art-dept.com

Art Department

Van Cleef & Arpels



Andrea Huelse

www.art-dept.com

Art Department



Andrea Hulse

www.art-dept.com

Art Department



Andrea Huelse

www.art-dept.com

Art Department



Van Cleef & Arpels

Andrea Huelse

www.art-dept.com

Art Department



Andrea Hulse

www.art-dept.com

Art Department



Andrea Huelse

www.art-dept.com

Art Department



Andrea Huelse

www.art-dept.com

Art Department



Andrea Huelse

www.art-dept.com

Art Department



Andrea Huelse

www.art-dept.com

Art Department



Andrea Huelse

www.art-dept.com

Art Department



Andrea Huelse

www.art-dept.com

Art Department



Andrea Huelse

www.art-dept.com

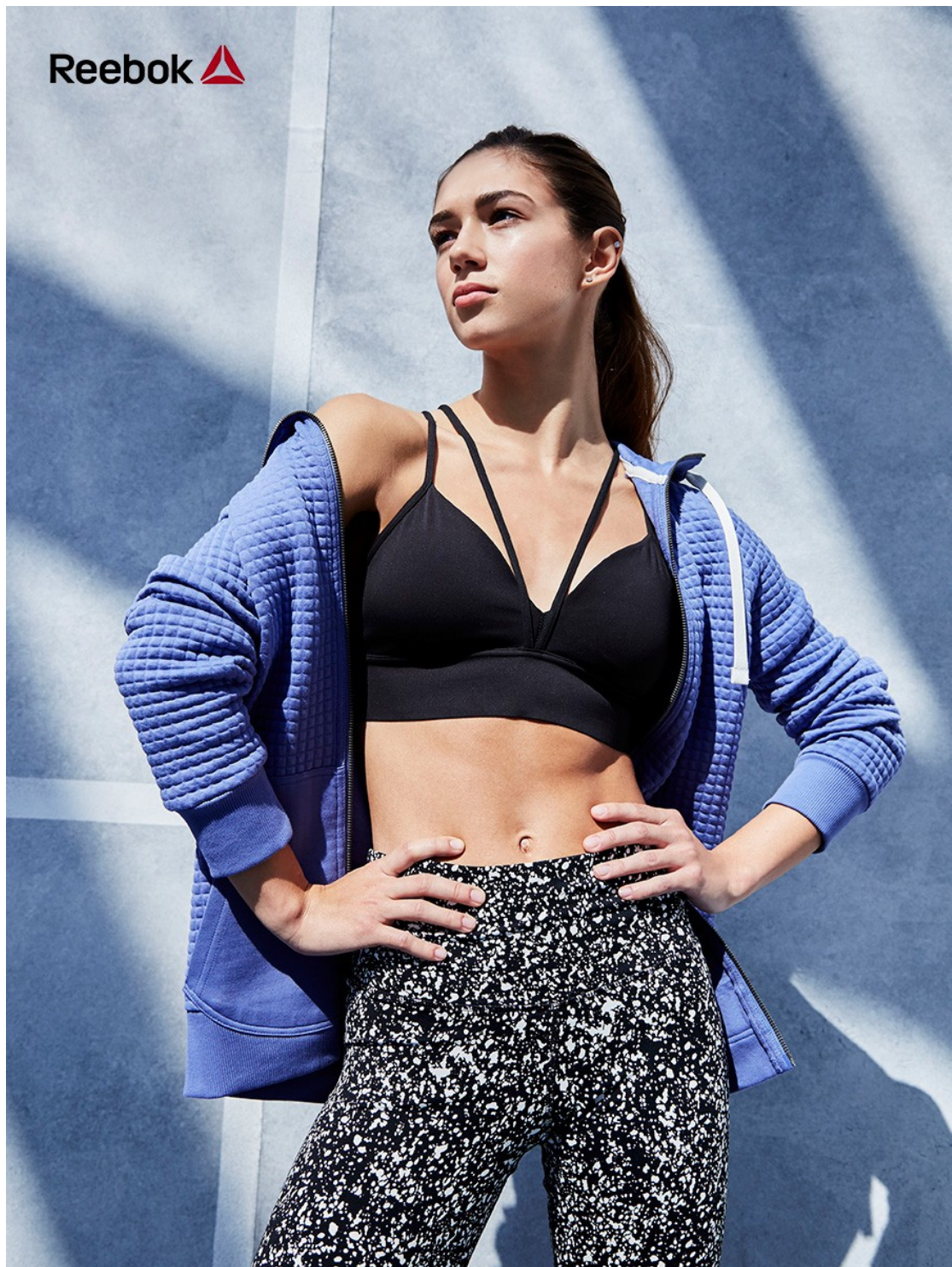
Art Department



Andrea Huelse

www.art-dept.com

Art Department



Andrea Huelse

www.art-dept.com

Art Department



Andrea Huelse

www.art-dept.com

Art Department



Andrea Huelse

www.art-dept.com

Art Department



Andrea Huelse

www.art-dept.com

Art Department



Andrea Huelse

www.art-dept.com

Art Department



Andrea Huelse

www.art-dept.com

Art Department



Andrea Huelse

www.art-dept.com

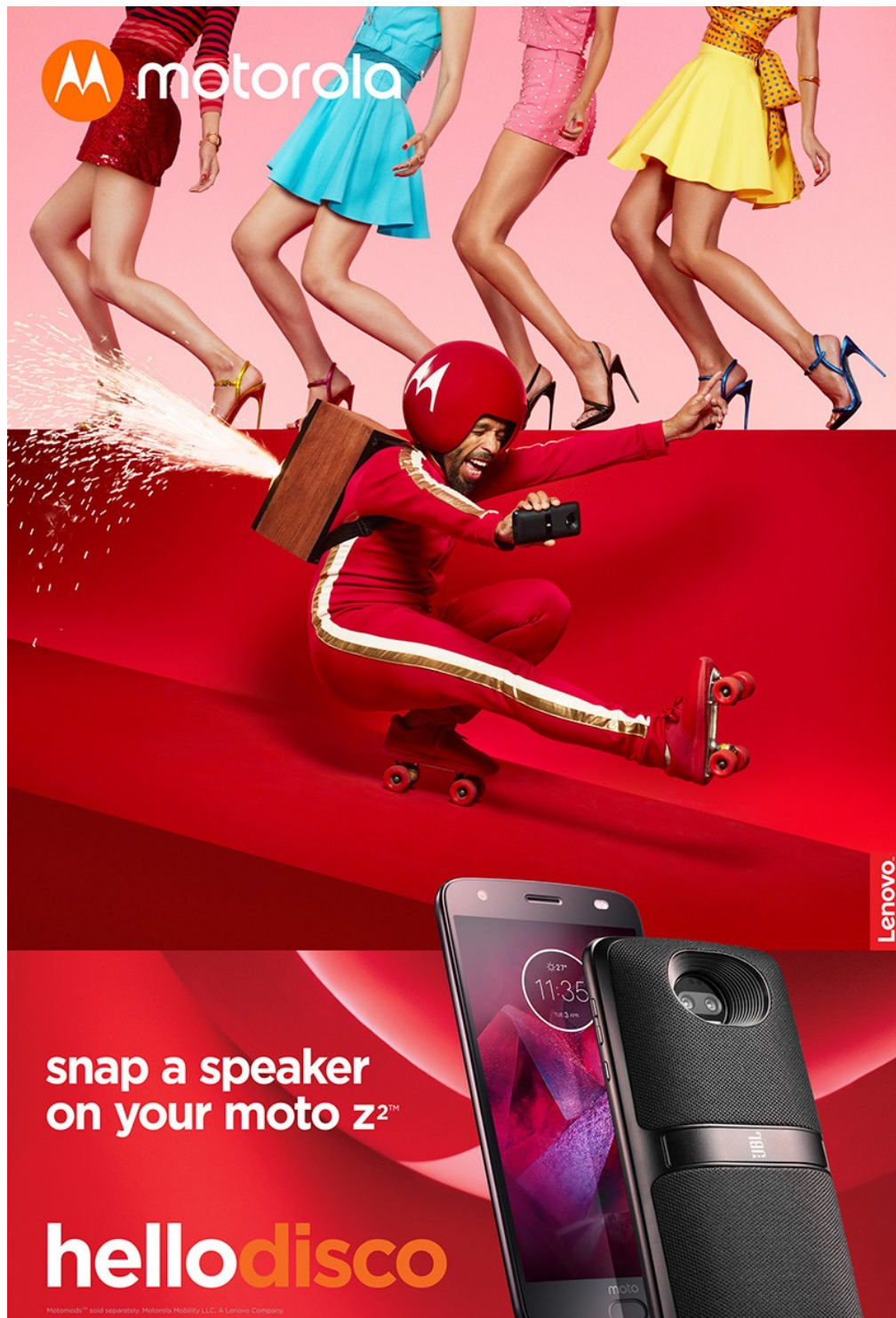
Art Department



Andrea Huelse

www.art-dept.com

Art Department



Andrea Huelse

www.art-dept.com

Art Department



Andrea Huelse

www.art-dept.com

Art Department



A promotional advertisement for the Motorola Moto Z2 smartphone. The top half features a man and a woman sitting at a table, both holding and playing games on the phone. The man is wearing a yellow and blue striped sweater, and the woman is wearing a blue jacket with colorful geometric patterns. The background is a solid orange color. In the top left corner, the Motorola logo is displayed. In the bottom right corner, a vertical red banner with the word "Lenovo" is visible. The bottom half of the image shows a close-up of the Motorola Moto Z2 smartphone with a black gamepad attached to its sides. The screen displays a racing game titled "3 REAL RACING".

motorola

Lenovo

snap a
gamepad
on your moto z2™

hellogamers

Motomods™ sold separately. Motorola Mobility LLC, A Lenovo Company

Andrea Huelse

www.art-dept.com

Art Department



The advertisement features a vibrant scene with five women sitting on a plush blue sofa against a matching blue curtain backdrop. They are dressed in fashionable, colorful outfits and are posing playfully, with one woman holding a smartphone. In the bottom right corner, a Motorola Moto Z2 smartphone is shown, highlighting its 360-degree camera feature. The Motorola logo is in the top left, and the Lenovo logo is in the bottom right.

motorola

Lenovo

snap a
360° camera
on your moto z²

hello360°

Motomods™ sold separately. Motorola Mobility LLC, A Lenovo Company.

Andrea Huelse

www.art-dept.com

Art Department



Andrea Huelse

www.art-dept.com

Art Department



Andrea Huelse

www.art-dept.com

Art Department



Andrea Huelse

www.art-dept.com

Art Department



Andrea Hulse

www.art-dept.com

Art Department



Andrea Huelse

www.art-dept.com

Art Department



Andrea Huelse

www.art-dept.com

Art Department



Andrea Huelse

www.art-dept.com

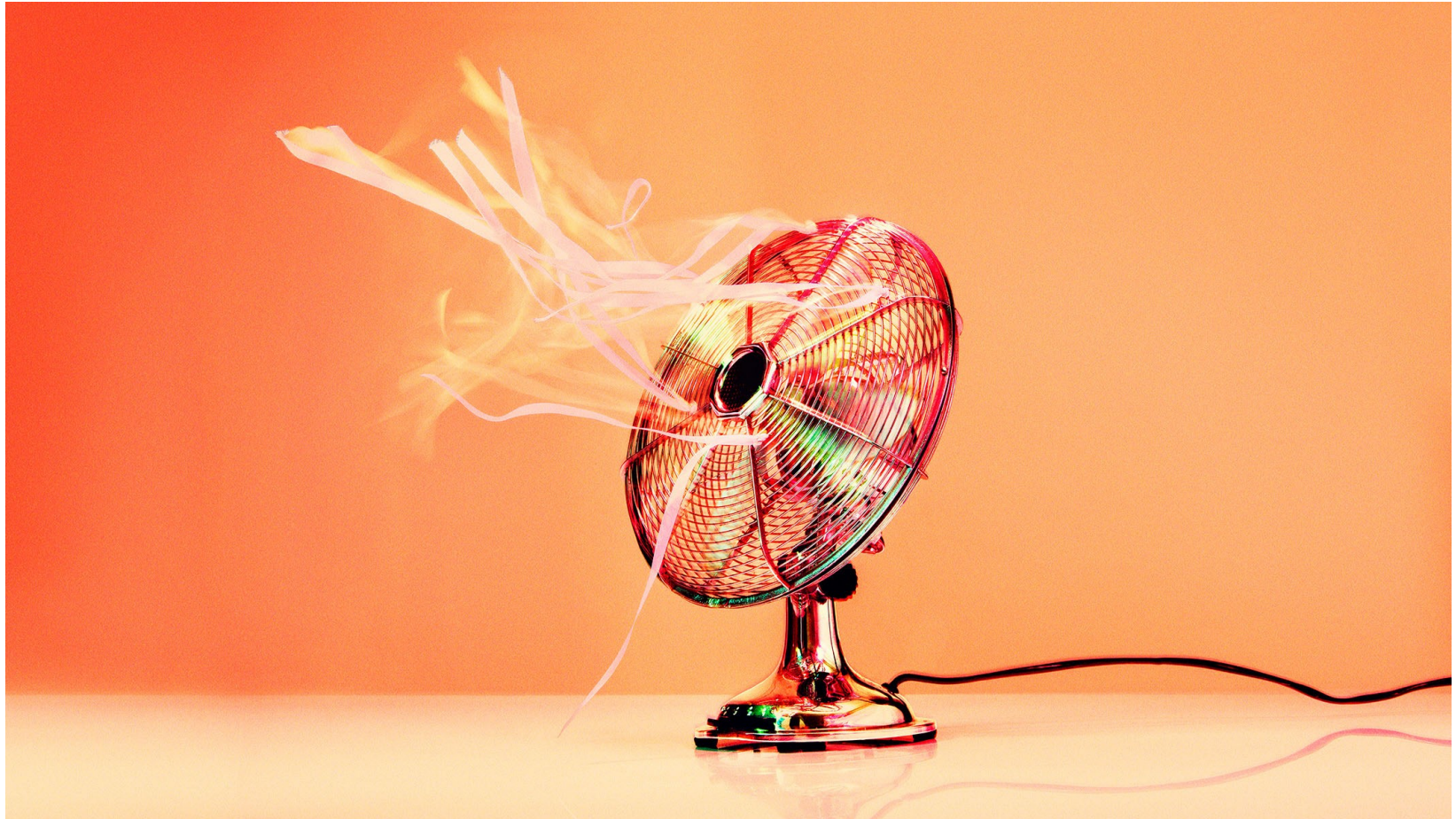
Art Department



Andrea Huelse

www.art-dept.com

Art Department



Andrea Hulse

www.art-dept.com

Art Department



Andrea Huelse

www.art-dept.com

Art Department



Andrea Hulse

www.art-dept.com

Art Department



Andrea Hulse

www.art-dept.com

Art Department



Andrea Huelse

www.art-dept.com

Art Department



Andrea Huelse

www.art-dept.com

Art Department



Andrea Huelse

www.art-dept.com

Art Department



Andrea Huelse

www.art-dept.com

Art Department



Andrea Huelse

www.art-dept.com

Art Department



Andrea Huelse

www.art-dept.com

Art Department



Andrea Huelse

www.art-dept.com

Art Department



Andrea Huelse

www.art-dept.com

Art Department



Andrea Huelse

www.art-dept.com

Art Department



Andrea Huelse

www.art-dept.com

Art Department



Andrea Huelse

www.art-dept.com

Art Department



Andrea Huelse

www.art-dept.com

Art Department



Andrea Huelse

www.art-dept.com

Art Department



Andrea Huelse

www.art-dept.com

Art Department



Andrea Huelse

www.art-dept.com

Art Department



Andrea Huelse

www.art-dept.com

Art Department



Andrea Huelse

www.art-dept.com

Art Department



Andrea Huelse

www.art-dept.com

Art Department



Andrea Huelse

www.art-dept.com

Art Department



Andrea Huelse

www.art-dept.com

Art Department



photography by ERIK MADIGAN HECK

ACROSS THE SPECTRUM

*Wild, composed, polite, outrageous—
skip full tilt from one to the next with colors
and prints that ignite the imagination*

SAINT LAURENT
41a Black leather “Y Stud”
crossbody handbag with
silver metal studs. \$1,590.
Italy. Designer Handbags
41b Black viscose velvet boot
with multicolor paillettes,
sizes 5½-12B. \$3,795.
Italy. Shoe Salon, stores only

1.800.944.9888 NEIMANMARCUS.COM

41

Andrea Huelse

www.art-dept.com

Art Department



MONIQUE LHUILLIER
47a Seafoam silk gazar and
nylon tulle draped gown
with scarlet embroidery,
sizes 4-14, \$7,495,
USA, Couture Salon

Andrea Hulse

www.art-dept.com

Art Department



Andrea Hulse

www.art-dept.com

Art Department



Andrea Huelse

www.art-dept.com

Art Department



AKRIS
43a Navy/blue jacquard
coatdress of polyester, silk,
and Lurex®, sizes 2-16. \$4,990.
Imported. Couture Salon

1.800.944.9888 NEIMANMARCUS.COM

43

Andrea Hulse

www.art-dept.com

Art Department



46 | AUGUST 2016

CAROLINA HERRERA
46a Ivory/indigo silk draped-
back gown with silk lining,
sizes 4-12. \$4,990.
USA. Couture Salon

FREE SHIPPING. EVEN FASTER FOR INCIRCLE.*

Andrea Huelse

www.art-dept.com

Art Department



GIANVITO ROSSI
#ONLYATNM
54a Red suede pump,
sizes 5-12B. \$795.
Italy. Shoe Salon

54 | AUGUST 2016

FREE SHIPPING. EVEN FASTER FOR INCIRCLE.*

Andrea Hulse

www.art-dept.com

Art Department



Andrea Huelse

www.art-dept.com

Art Department



Andrea Huelse

www.art-dept.com

Art Department



Andrea Huelse

www.art-dept.com

Art Department



Andrea Huelse

www.art-dept.com

Art Department



Andrea Huelse

www.art-dept.com

Art Department



Andrea Huelse

www.art-dept.com

Art Department



Andrea Huelse

www.art-dept.com

Art Department



Andrea Huelse

www.art-dept.com

Art Department




kate spade
NEW YORK

Andrea Hulse

www.art-dept.com

Art Department



Andrea Huelse

www.art-dept.com

Art Department



Andrea Huelse

www.art-dept.com

Art Department



Andrea Huelse

www.art-dept.com

Art Department



Andrea Huelse

www.art-dept.com

Art Department



Andrea Huelse

www.art-dept.com

Art Department



Andrea Huelse

www.art-dept.com

Art Department



Andrea Huelse

www.art-dept.com

Art Department



Andrea Huelse

www.art-dept.com

Art Department



Andrea Huelse

www.art-dept.com

Art Department



Andrea Huelse

www.art-dept.com

Art Department



Andrea Hulse

www.art-dept.com

Art Department



Andrea Hulse

www.art-dept.com

Art Department



Andrea Hulse

www.art-dept.com

Art Department



Andrea Hulse

www.art-dept.com

Art Department



Andrea Hulse

www.art-dept.com

Art Department



Andrea Hulse

www.art-dept.com

Art Department



Andrea Huelse

www.art-dept.com

Art Department



Andrea Hulse

www.art-dept.com

Art Department



Andrea Hulse

www.art-dept.com

Art Department



Andrea Hulse

www.art-dept.com

Art Department



Andrea Hulse

www.art-dept.com

Art Department



Andrea Hulse

www.art-dept.com

Art Department



Andrea Huelse

www.art-dept.com

Art Department



Andrea Huelse

www.art-dept.com

Art Department



Andrea Huelse

www.art-dept.com

Art Department



Andrea Huelse

www.art-dept.com

Art Department



Andrea Huelse

www.art-dept.com

Art Department



Andrea Huelse

www.art-dept.com

Art Department



Andrea Huelse

www.art-dept.com

Art Department



Look Again.  **Payless**
SHOESOURCE®

Lace pump 19.99
Lace handbag 14.99
©2006 PSSW. Styles vary by store. While quantities last.

Payless ShoeSource
www.payless.com

Andrea Huelse

www.art-dept.com

Art Department



Look Again.  **Payless**
SHOESOURCE®

black patent pump 17.99
black patent handbag 17.99
©2006 PSSW. Styles vary by store. While quantities last.

Payless ShoeSource
www.payless.com

Andrea Hulse

www.art-dept.com

Art Department

A woman with long, dark brown hair is smiling and looking directly at the camera. She is balancing two red sneakers with white soles on top of her head. She is wearing a green sleeveless top with a white geometric pattern and a necklace with white and blue beads. The background is a plain, light beige color.

zoe&zacTM

fresh green fashion

Summer Rayne Oakes
Author, sustainable style expert
and host of Planet Green.

only at  Payless^{SHOESOURCE}

Andrea Huelse

www.art-dept.com

Art Department



Andrea Huelse

www.art-dept.com

Art Department



Andrea Huelse

www.art-dept.com

Art Department



Andrea Huelse

www.art-dept.com

Art Department



Andrea Huelse

www.art-dept.com

Art Department



Andrea Huelse

www.art-dept.com

Art Department



Andrea Huelse

www.art-dept.com

Art Department



Andrea Huelse

www.art-dept.com

Art Department



Andrea Huelse

www.art-dept.com

Art Department



Andrea Huelse

www.art-dept.com

Art Department



Andrea Hulse

www.art-dept.com

Art Department



Andrea Huelse

www.art-dept.com

Art Department



Andrea Huelse

www.art-dept.com

Art Department



Andrea Huelse

www.art-dept.com

Art Department



Andrea Huelse

www.art-dept.com

Art Department



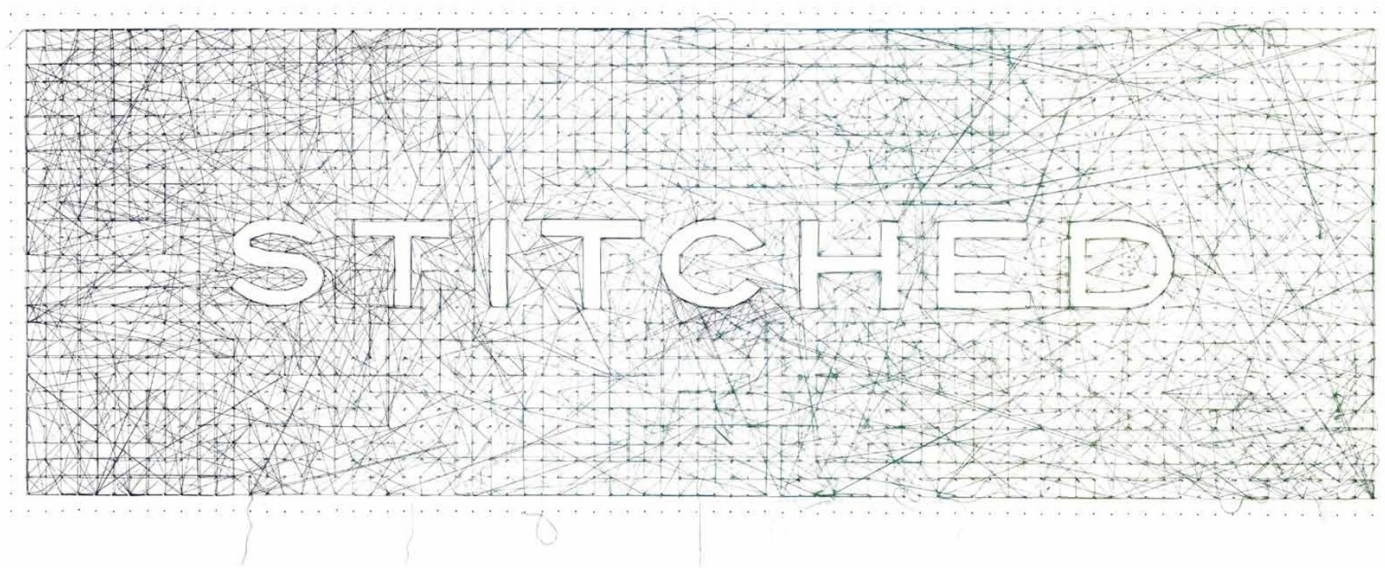
S T I T C H E D / 2 0 1 2

Andrea Hulse

www.art-dept.com

Art Department

16
17



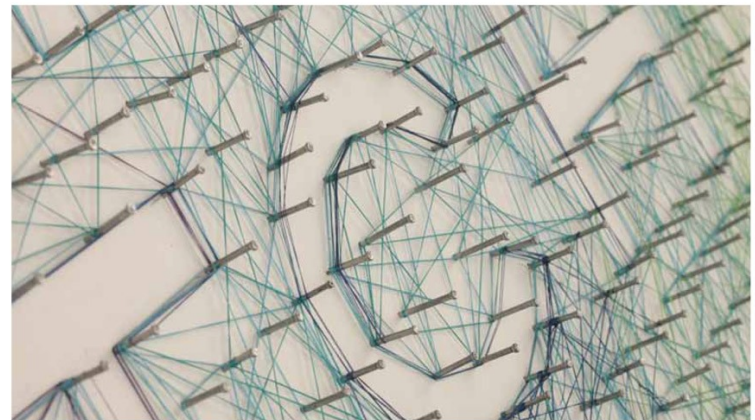
Andrea Hulse

www.art-dept.com

Art Department



10
11



PG.10 - M001 - SHORT SLEEVE EPAULET TAB 3" COLLAR W/ COLLAR STAY
BODY: BLK / THREAD: WHITE

Andrea Huelse

www.art-dept.com

Art Department



PG.12 - W043 - LONG SLEEVE RECTANGLE ELBOW PATCH LOW SCOOPED NECK
BODY:WHITE PATCH:NAVY / THREAD: MAROON 1630

PG.13 - W039 - 3/4" ROLLED EPAULET SLEEVE HIGH SCOOPED NECK
BODY: LT BLUE / THREAD: ROBBIN'S EGG BLUE EY 507

12
13

Andrea Hulse

www.art-dept.com

Art Department

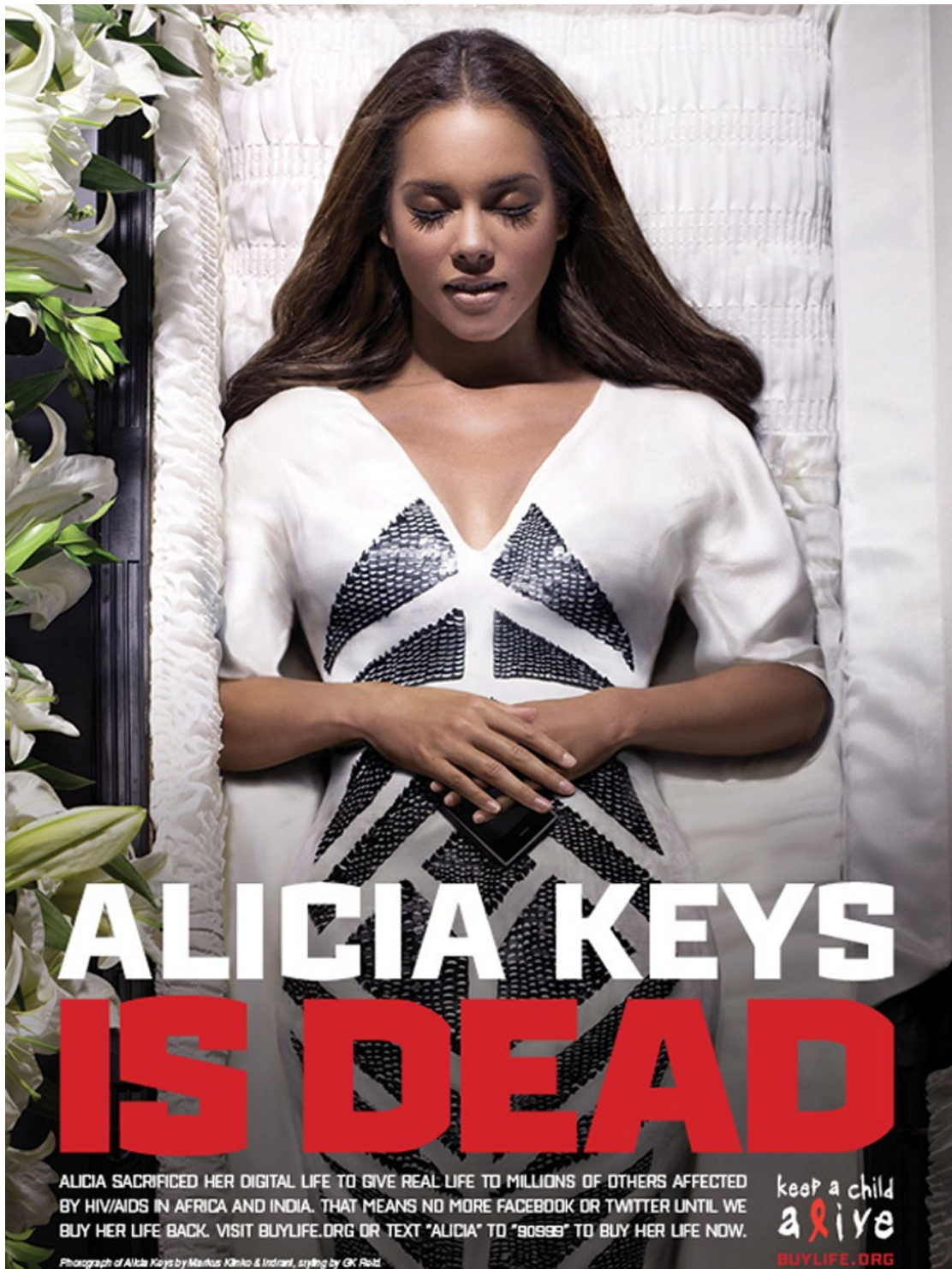
4
5



Andrea Hulse

www.art-dept.com

Art Department



ALICIA KEYS
IS DEAD

ALICIA SACRIFICED HER DIGITAL LIFE TO GIVE REAL LIFE TO MILLIONS OF OTHERS AFFECTED BY HIV/AIDS IN AFRICA AND INDIA. THAT MEANS NO MORE FACEBOOK OR TWITTER UNTIL WE BUY HER LIFE BACK. VISIT BUYLIFE.ORG OR TEXT "ALICIA" TO "90999" TO BUY HER LIFE NOW.

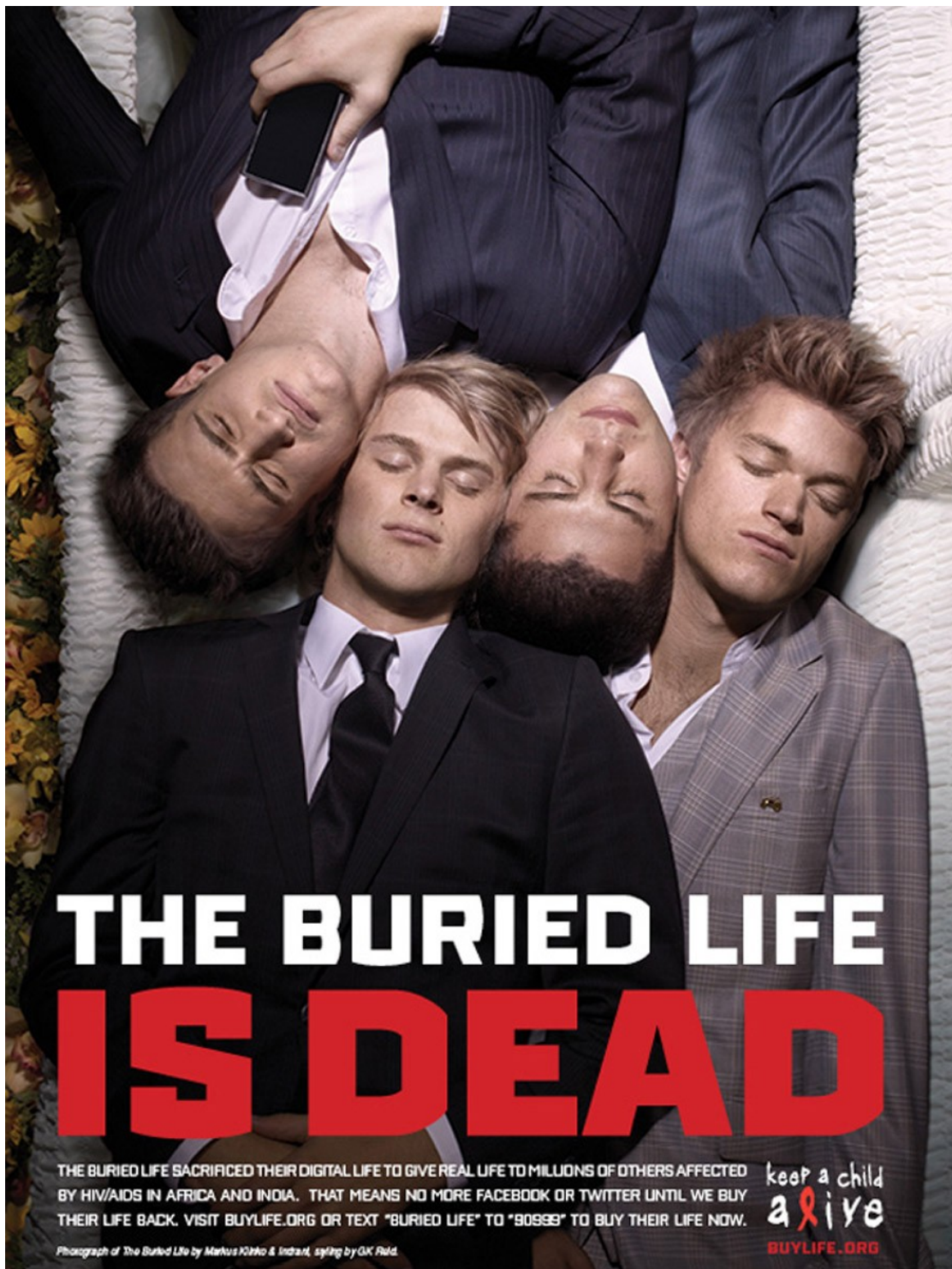
Photograph of Alicia Keys by Markus Klinko & Ingrid, styling by OK Reid

keep a child
alive
BUYLIFE.ORG

Andrea Huelse

www.art-dept.com

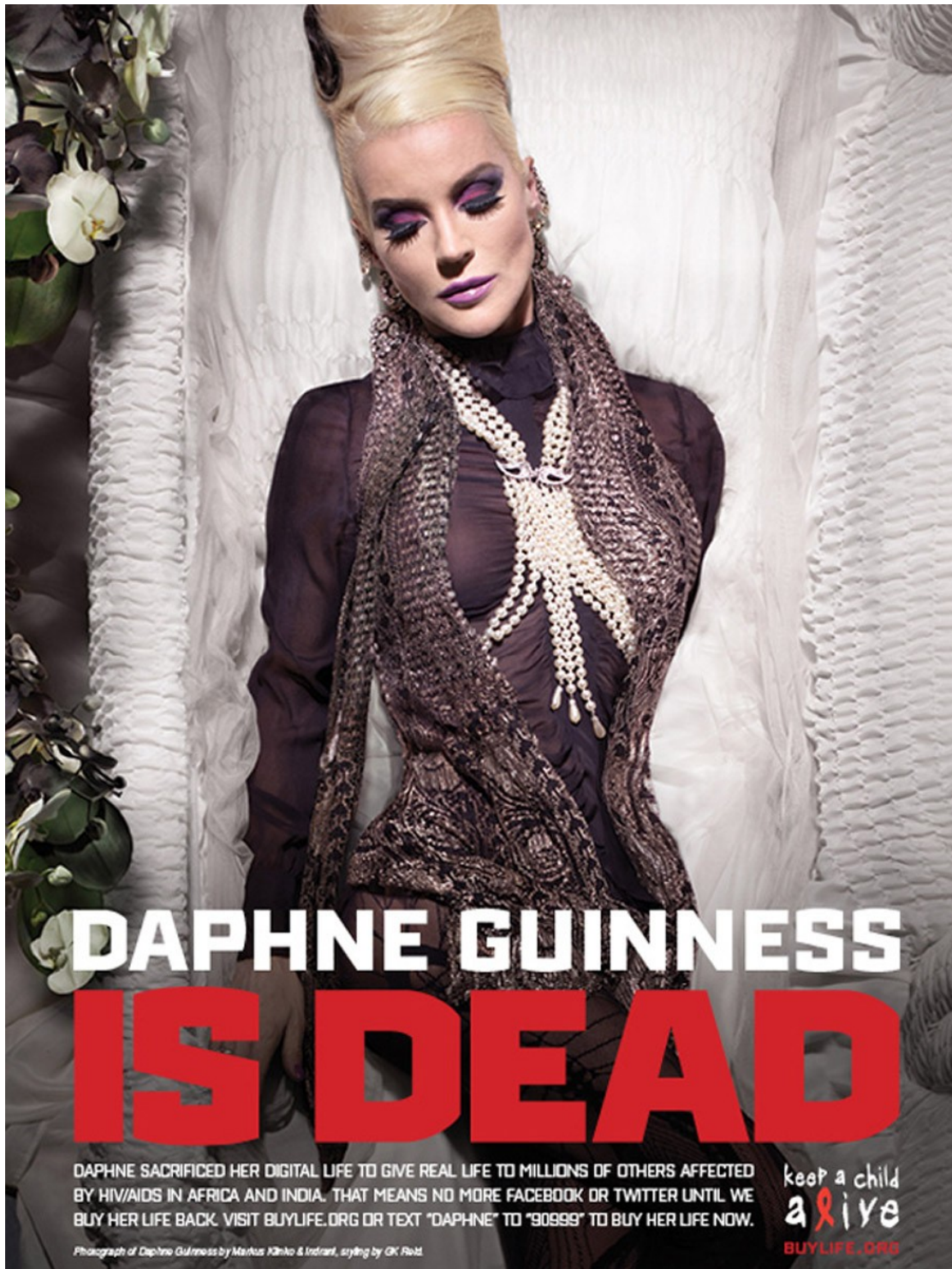
Art Department



Andrea Huelse

www.art-dept.com

Art Department



DAPHNE GUINNESS
IS DEAD

DAPHNE SACRIFICED HER DIGITAL LIFE TO GIVE REAL LIFE TO MILLIONS OF OTHERS AFFECTED BY HIV/AIDS IN AFRICA AND INDIA. THAT MEANS NO MORE FACEBOOK OR TWITTER UNTIL WE BUY HER LIFE BACK. VISIT BUYLIFE.ORG OR TEXT "DAPHNE" TO "90999" TO BUY HER LIFE NOW.

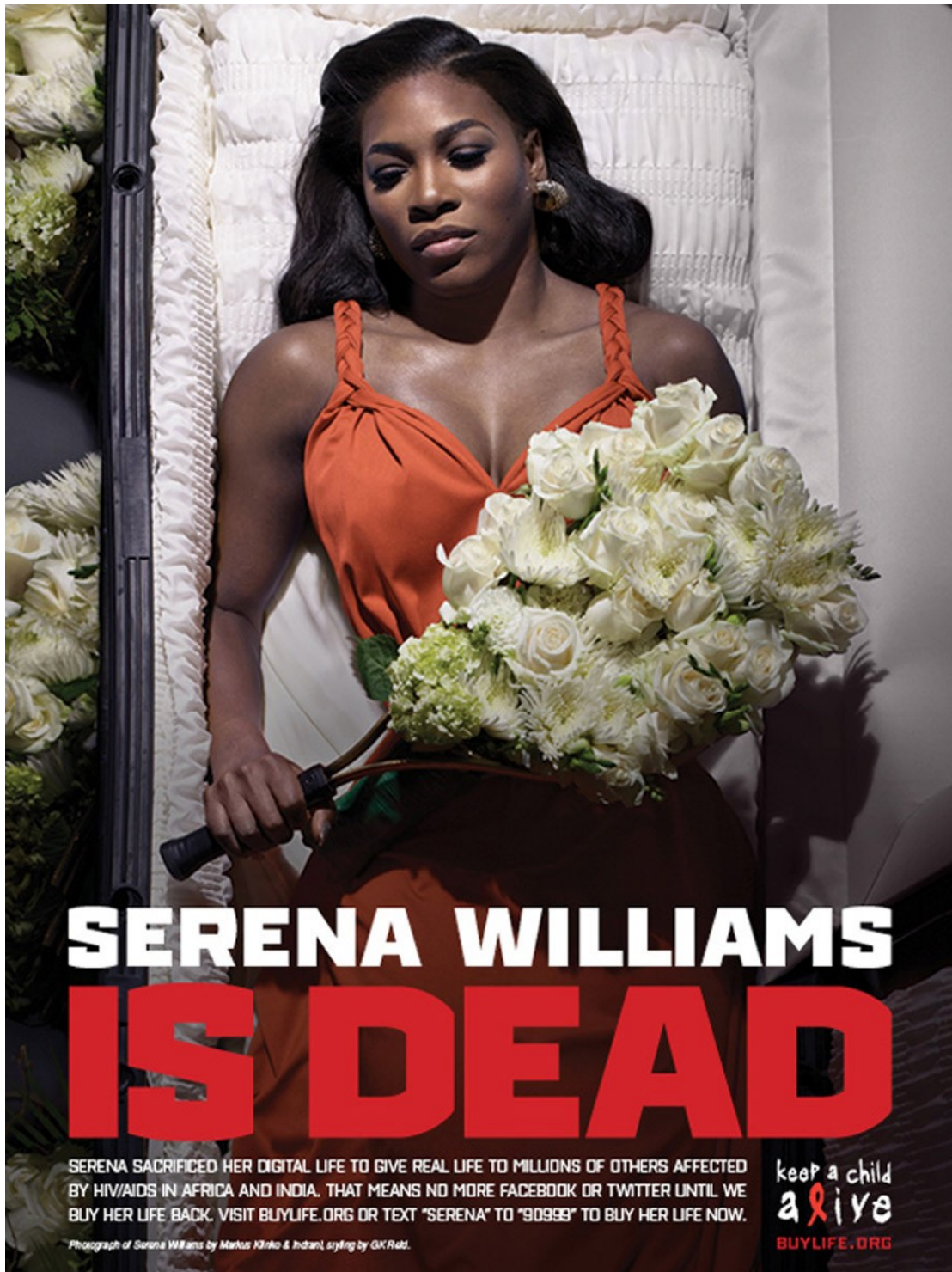
Photograph of Daphne Guinness by Markus Klinko & Infrared, styling by OK! Field.

keep a child
alive
BUYLIFE.ORG

Andrea Huelse

www.art-dept.com

Art Department



Andrea Huelse

www.art-dept.com