

# Art Department



INTRODUCING  
**REVITALIFT®**  
**DERM INTENSIVES**

OUR MOST POWERFUL  
SKINCARE FORMULAS.

CREATED BY  
VALIDATED WITH  
DERMATOLOGISTS  
L'ORÉAL PARIS

**BUILT ON DECADES OF L'ORÉAL RESEARCH**

Revitalift Derm Intensives Products were validated in partnership with an advisory panel of dermatologists who performed a:

- THOROUGH REVIEW OF INDEPENDENT CLINICAL TESTING PROTOCOLS AND RESULTS
- COMPREHENSIVE SCREENING OF INGREDIENTS TO UPHOLD STRICT FORMULATION STANDARDS

FRAGRANCE FREE   PARABEN FREE   COLORANT DYE FREE   MINERAL OIL FREE

TESTED ON EVERY SKIN TYPE, EVEN SENSITIVE

L'ORÉAL  
PARIS



*Long is beautiful*

BEAUTIFUL LENGTHS BY PANTENE

Kenji Aoki

[www.art-dept.com](http://www.art-dept.com)

# Art Department



Kenji Aoki

[www.art-dept.com](http://www.art-dept.com)

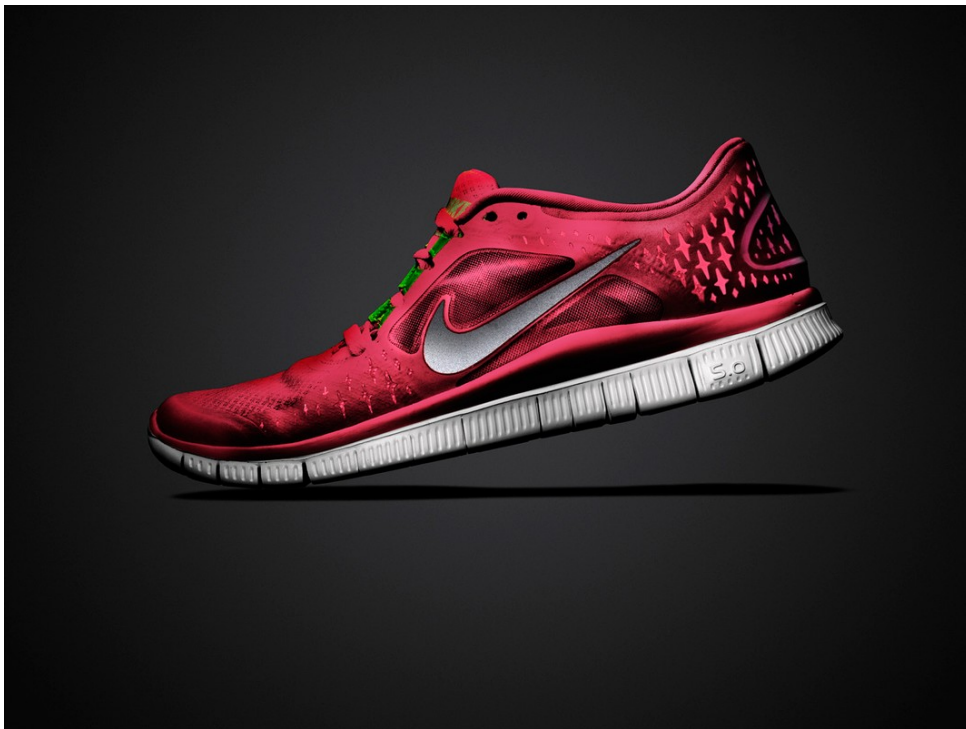
# Art Department



Kenji Aoki

[www.art-dept.com](http://www.art-dept.com)

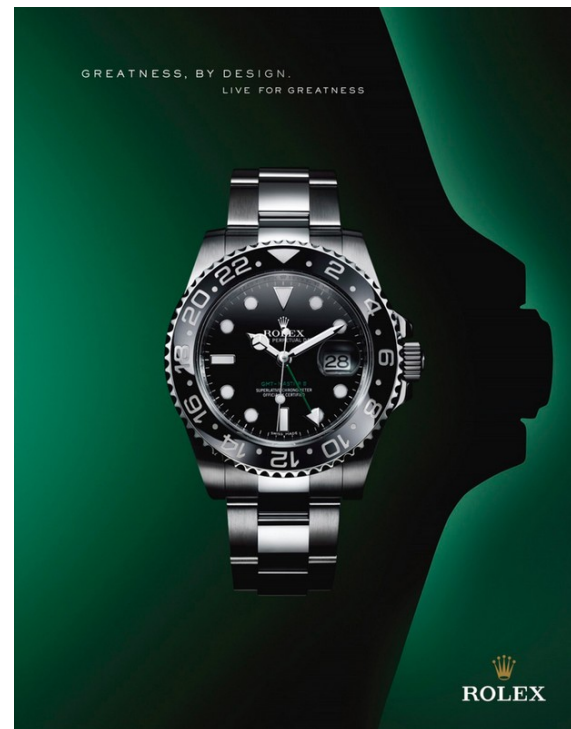
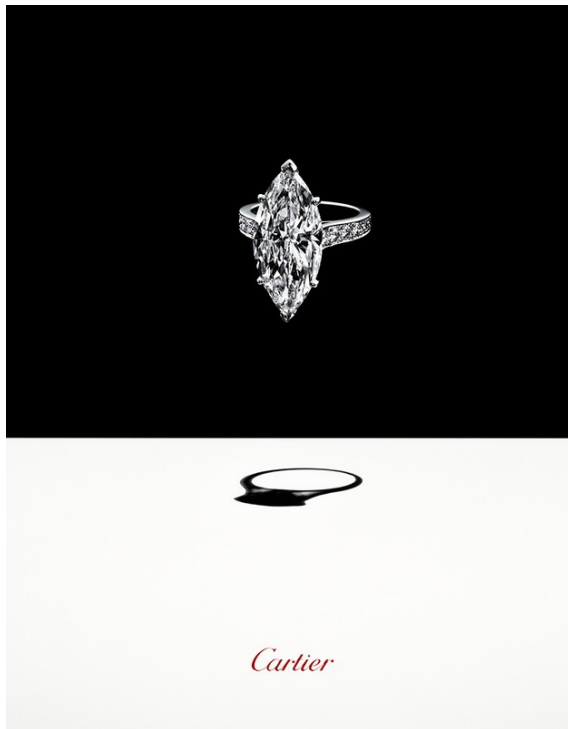
# Art Department



Kenji Aoki

[www.art-dept.com](http://www.art-dept.com)

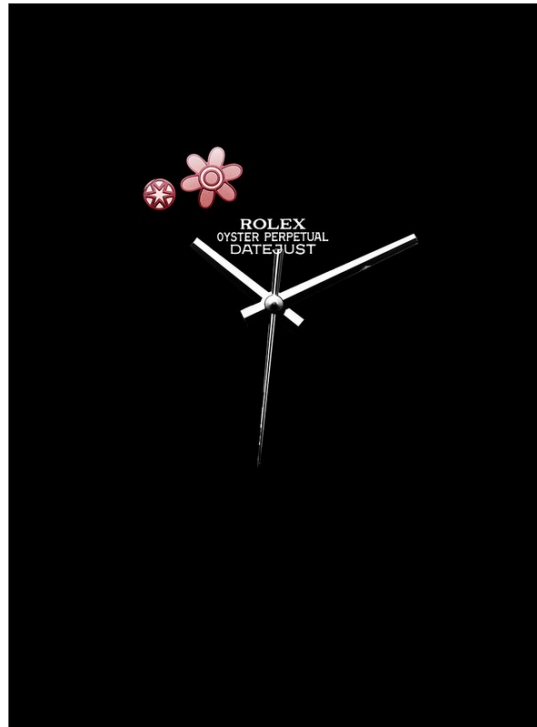
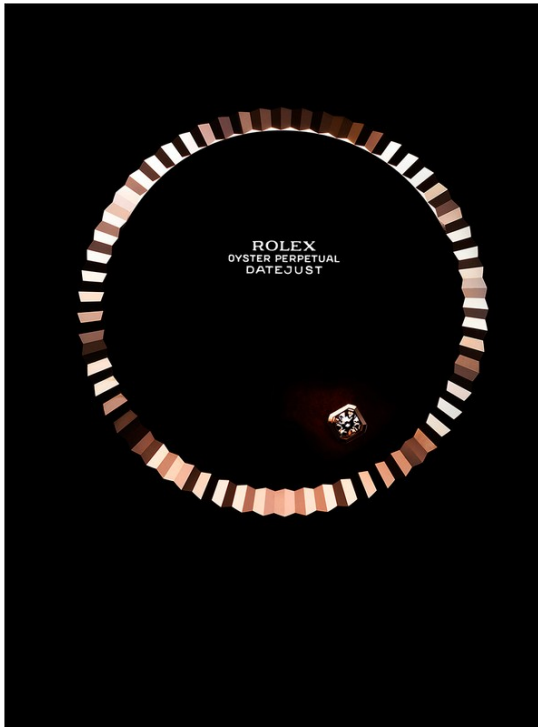
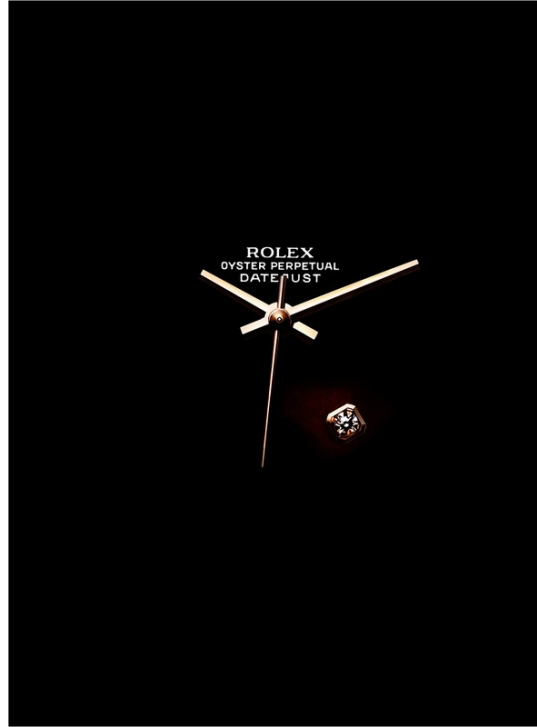
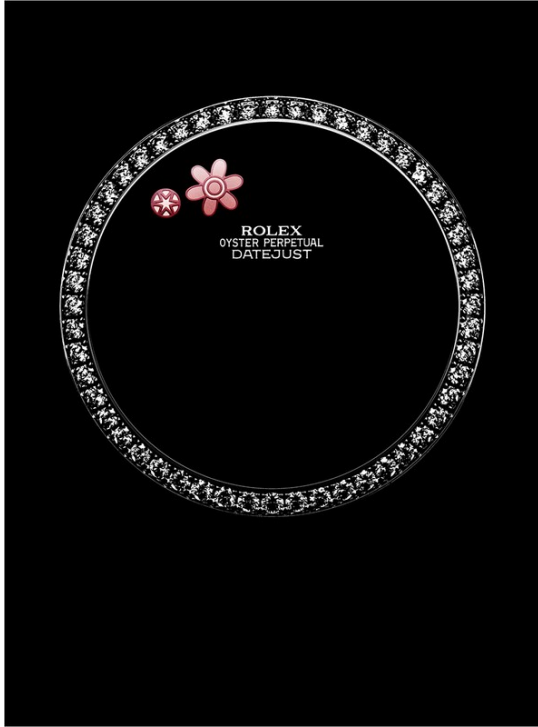
# Art Department



Kenji Aoki

[www.art-dept.com](http://www.art-dept.com)

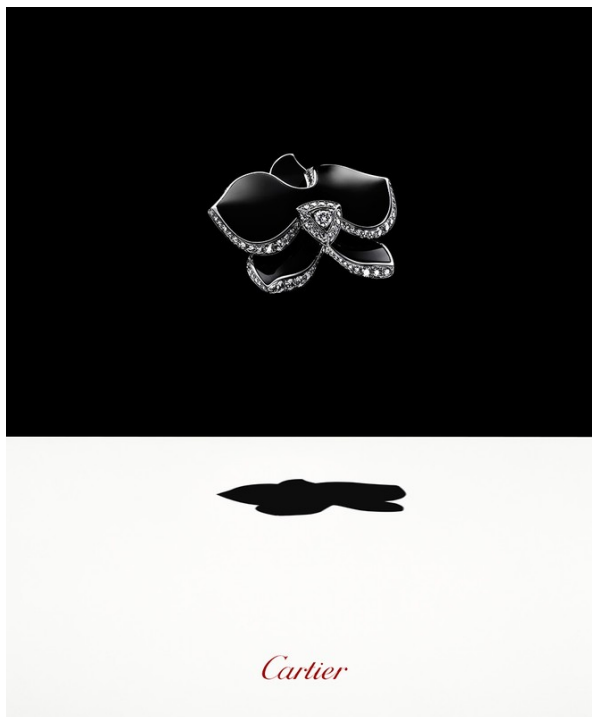
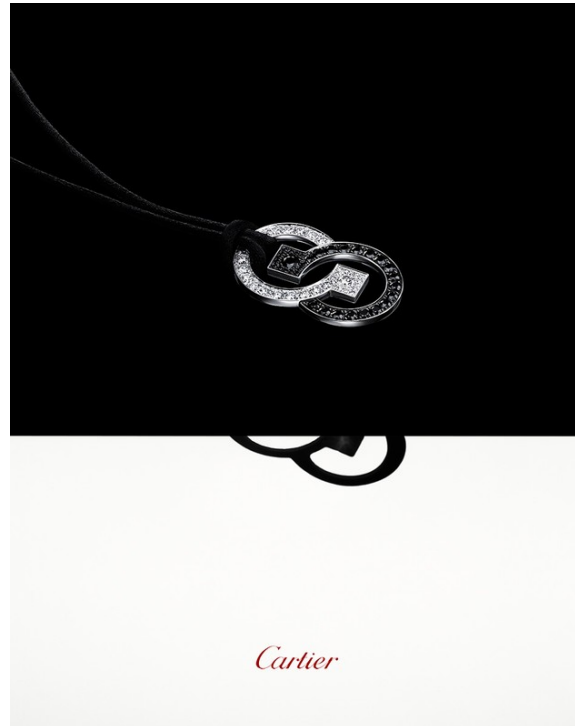
# Art Department



Kenji Aoki

[www.art-dept.com](http://www.art-dept.com)

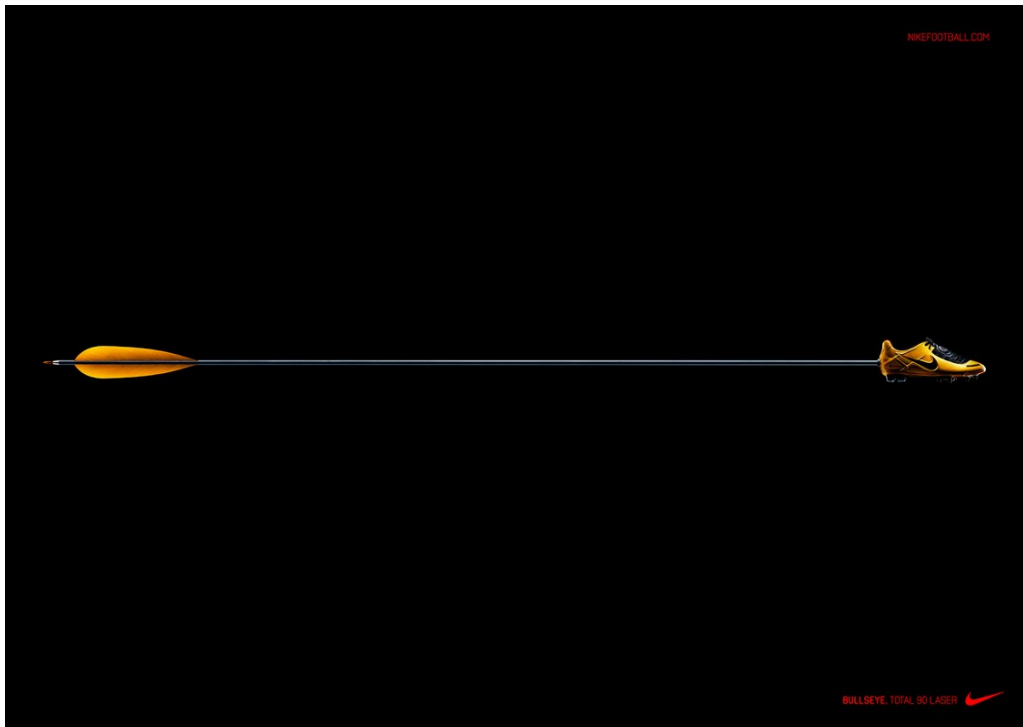
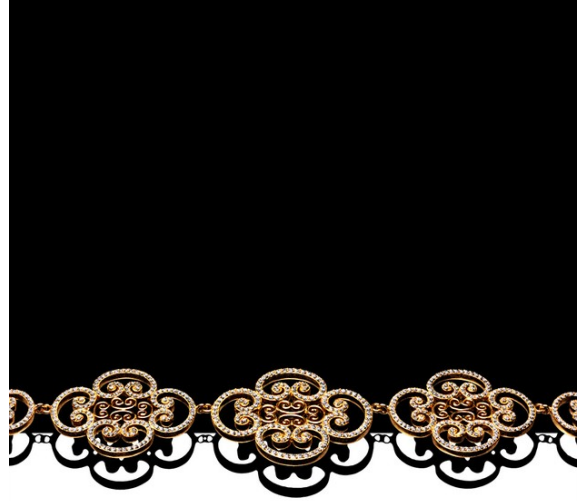
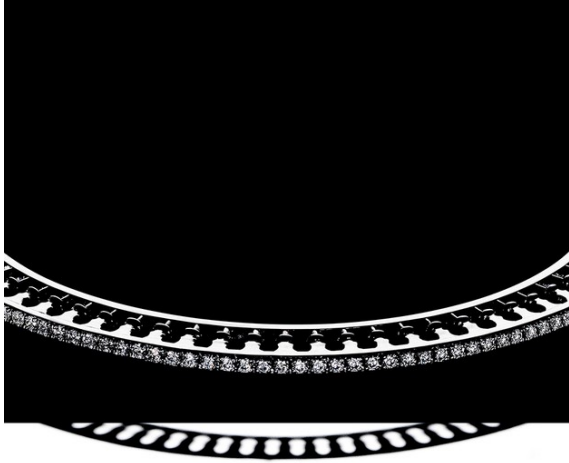
# Art Department



Kenji Aoki

[www.art-dept.com](http://www.art-dept.com)

# Art Department



Kenji Aoki

[www.art-dept.com](http://www.art-dept.com)



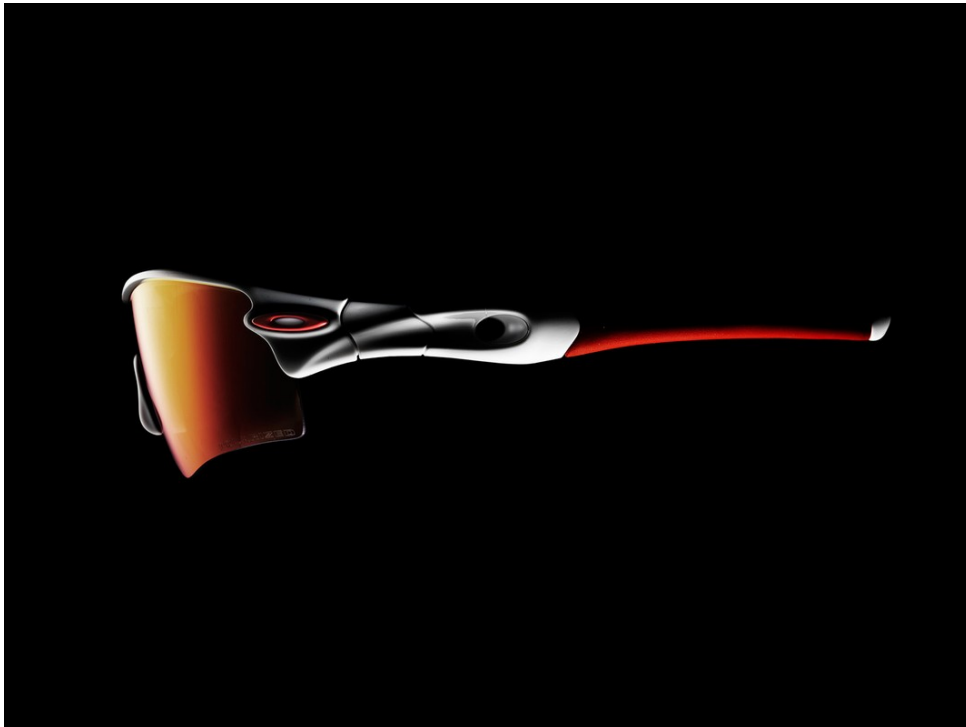
# Art Department



Kenji Aoki

[www.art-dept.com](http://www.art-dept.com)

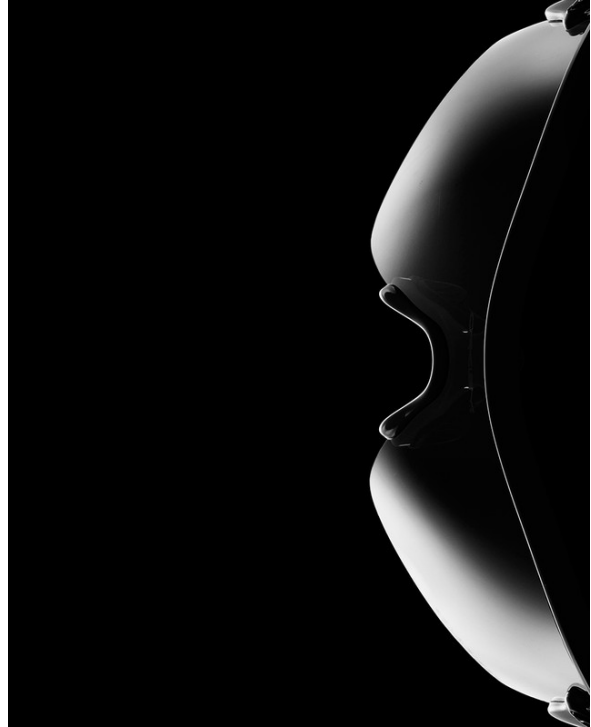
# Art Department



Kenji Aoki

[www.art-dept.com](http://www.art-dept.com)

# Art Department



Kenji Aoki

[www.art-dept.com](http://www.art-dept.com)

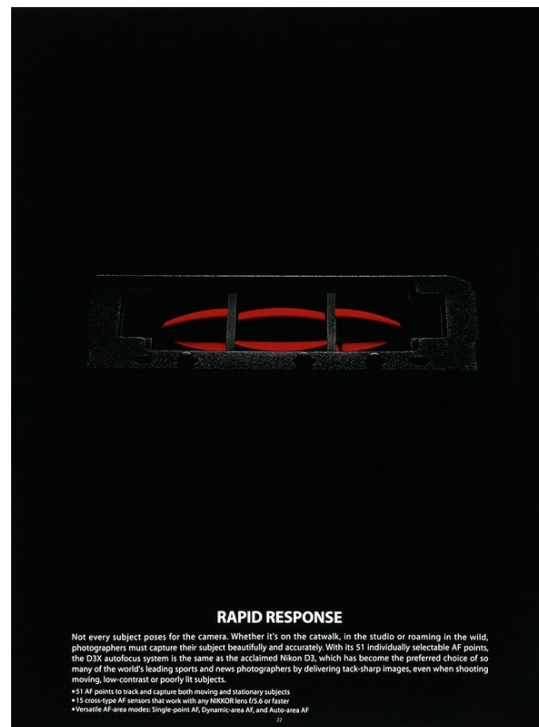
# Art Department



Kenji Aoki

[www.art-dept.com](http://www.art-dept.com)

# Art Department



Kenji Aoki

[www.art-dept.com](http://www.art-dept.com)



# Art Department

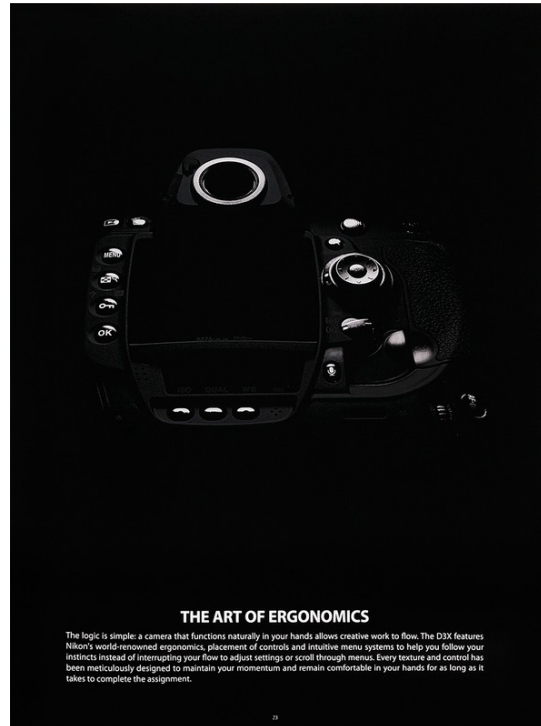


### CREATIVE FREEDOM

Whether it's the world-renowned NIKKOR lenses or the industry-leading Speedlight system, shooting with a D3X opens the door to a range of creative opportunities that only Nikon can offer. The Nikon Total Imaging System, backed up by the Nikon Professional Services (NPS)\* network is there to help you realize your vision, or even stimulate new ones.

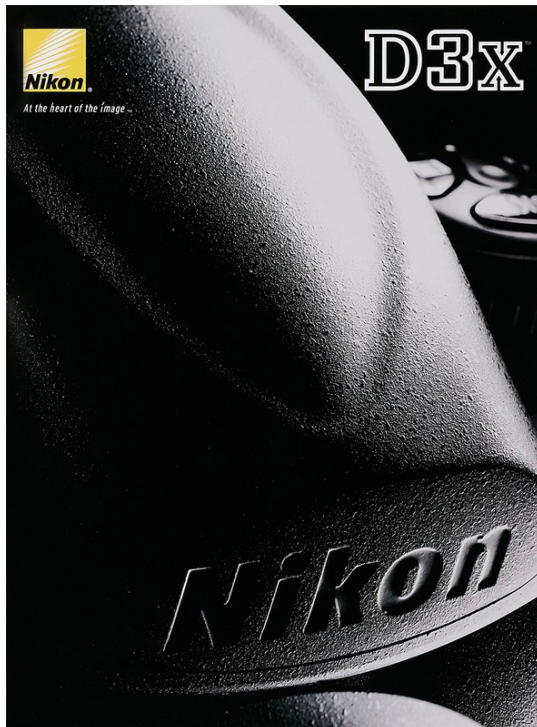
- Compatible with the extensive NIKKOR lens range, including fisheye, ultra-wide angle, zoom, telephoto, super-telephoto, macro and PC lenses
- Nano-crystal coating on NIKKOR lenses for spectacular clarity, as well as minimized ghost and flare effects during harsh lighting
- NIKKOR Vibration Reduction to effectively compensate for blur caused by camera shake
- The industry-leading Nikon Creative Lighting System, including portable and versatile Nikon Speedlights
- Wireless Transmission, GPS input, HDMI output interfaces
- A comprehensive suite of workflow software to manage, edit, control and authenticate your important files

\*These services are for NPS members.



### THE ART OF ERGONOMICS

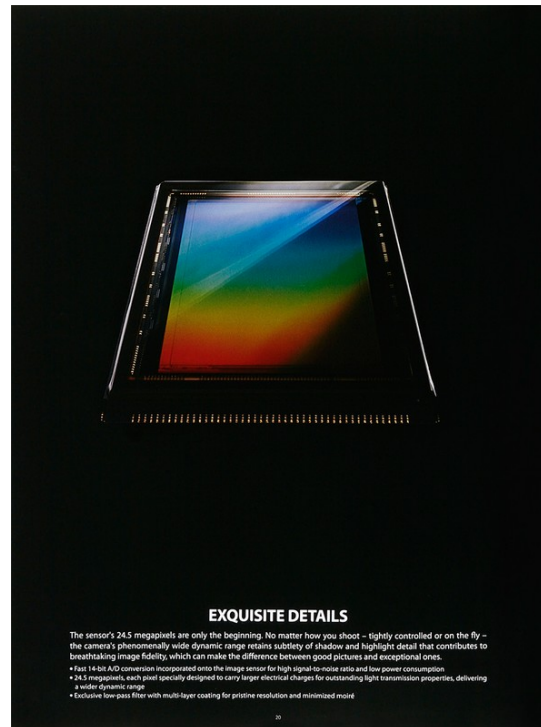
The logic is simple: a camera that functions naturally in your hands allows creative work to flow. The D3X features Nikon's world-renowned ergonomics, placement of controls and intuitive menu systems to help you follow your instincts instead of interrupting your flow to adjust settings or scroll through menus. Every texture and control has been meticulously designed to maintain your momentum and remain comfortable in your hands for as long as it takes to complete the assignment.



**Nikon**  
At the heart of the image.

# D3X

**Nikon**



### EXQUISITE DETAILS

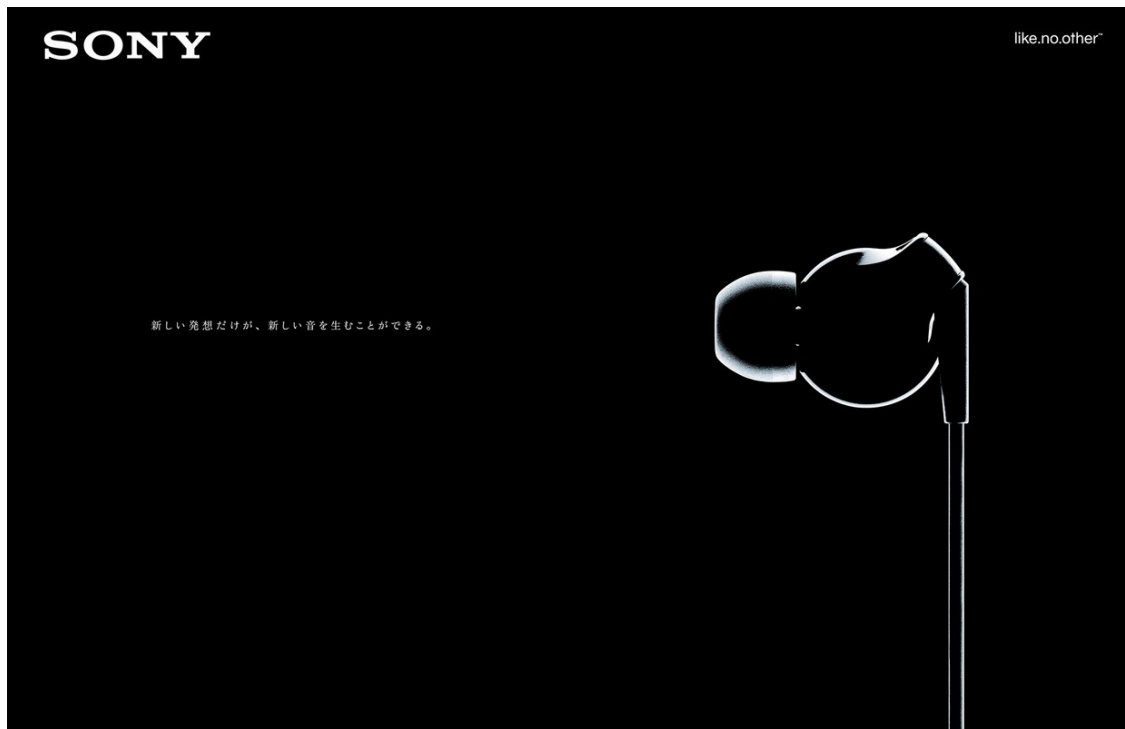
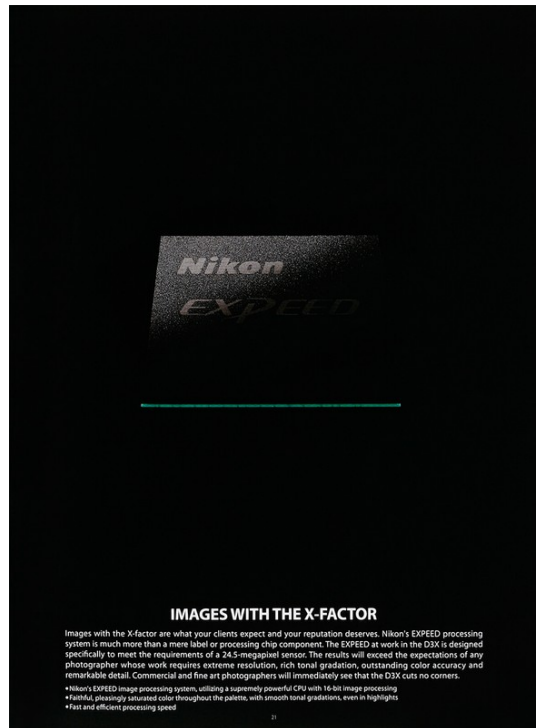
The sensor's 24.5 megapixels are only the beginning. No matter how you shoot – tightly controlled or on the fly – the camera's phenomenally wide dynamic range retains subtlety of shadow and highlight detail that contributes to breathtaking image fidelity, which can make the difference between good pictures and exceptional ones.

- Fast 14-bit A/D conversion incorporated onto the image sensor for high signal-to-noise ratio and low power consumption
- 24.5 megapixels, each pixel specially designed to carry larger electrical charges for outstanding light transmission properties, delivering a wider dynamic range
- Exclusive low-pass filter with multi-layer coating for pristine resolution and minimized moiré

Kenji Aoki

[www.art-dept.com](http://www.art-dept.com)

# Art Department

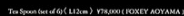


Kenji Aoki

[www.art-dept.com](http://www.art-dept.com)

like.no.other™

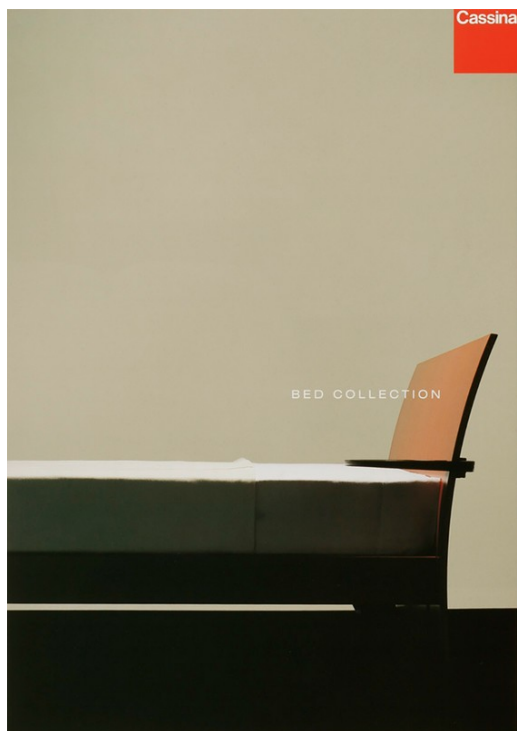
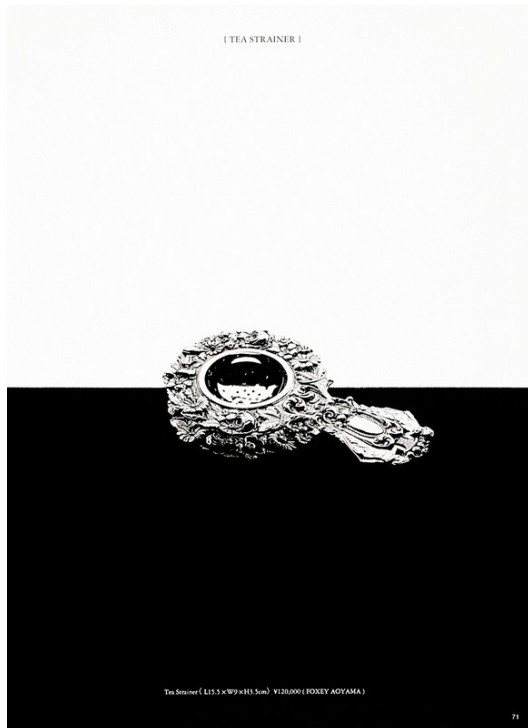
いい音の先に、もっといい音。  
Sound History



www.art-dept.com



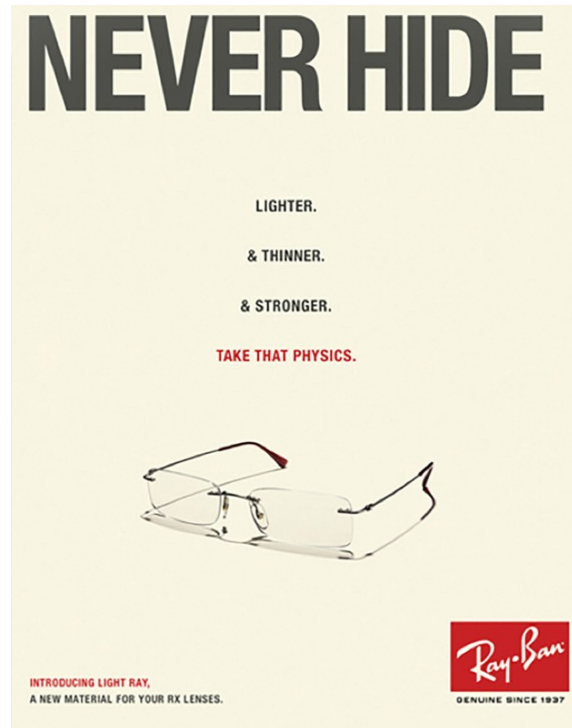
# Art Department



Kenji Aoki

[www.art-dept.com](http://www.art-dept.com)

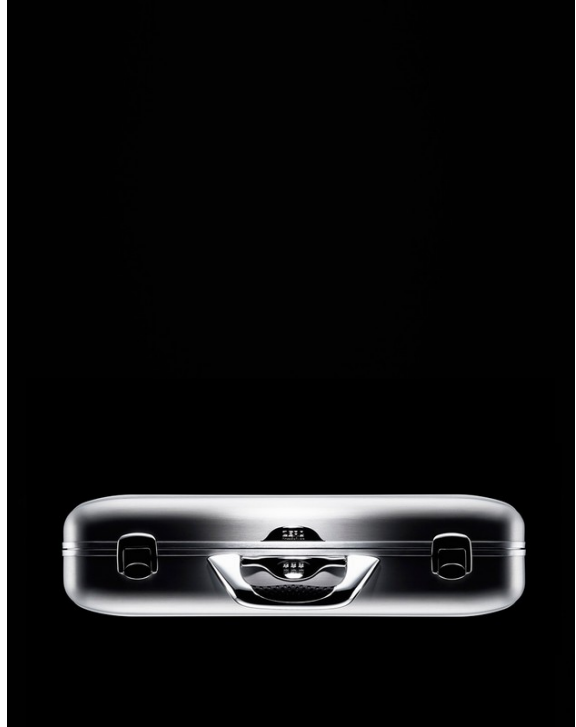
# Art Department



Kenji Aoki

[www.art-dept.com](http://www.art-dept.com)

# Art Department



Kenji Aoki

[www.art-dept.com](http://www.art-dept.com)

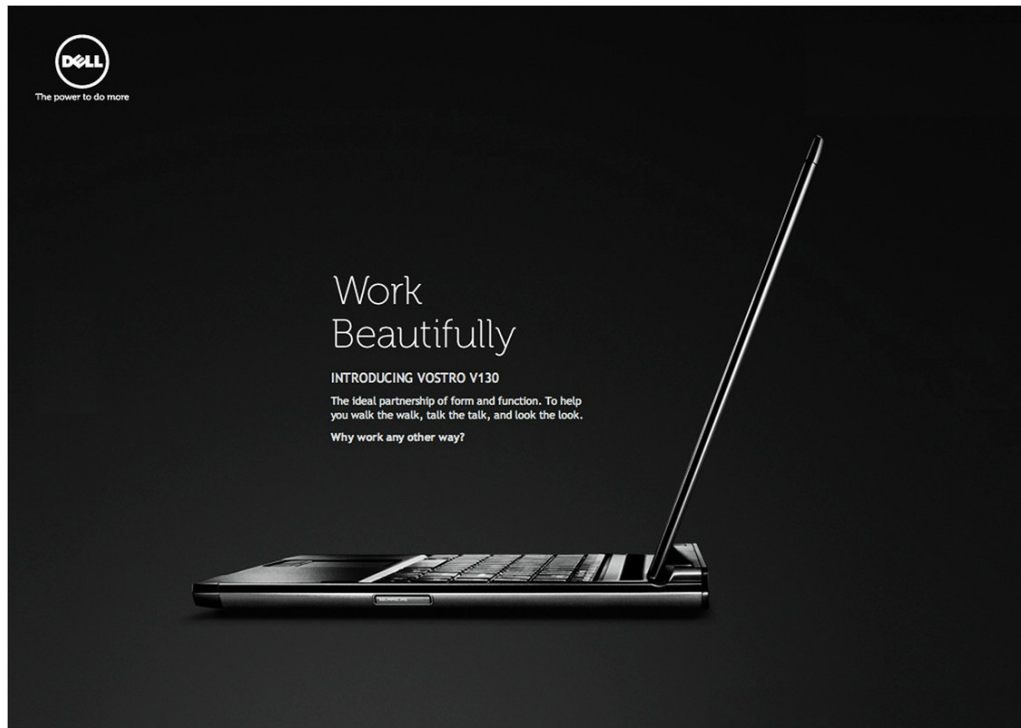
# Art Department



Kenji Aoki

[www.art-dept.com](http://www.art-dept.com)

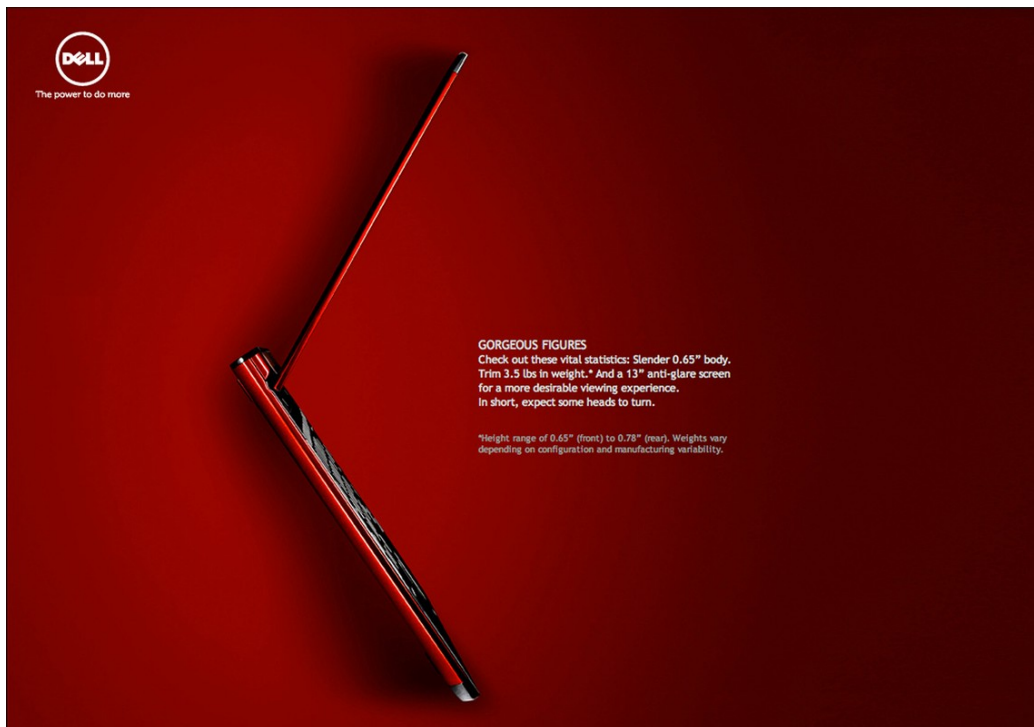
# Art Department



Kenji Aoki

[www.art-dept.com](http://www.art-dept.com)

# Art Department



Kenji Aoki

[www.art-dept.com](http://www.art-dept.com)