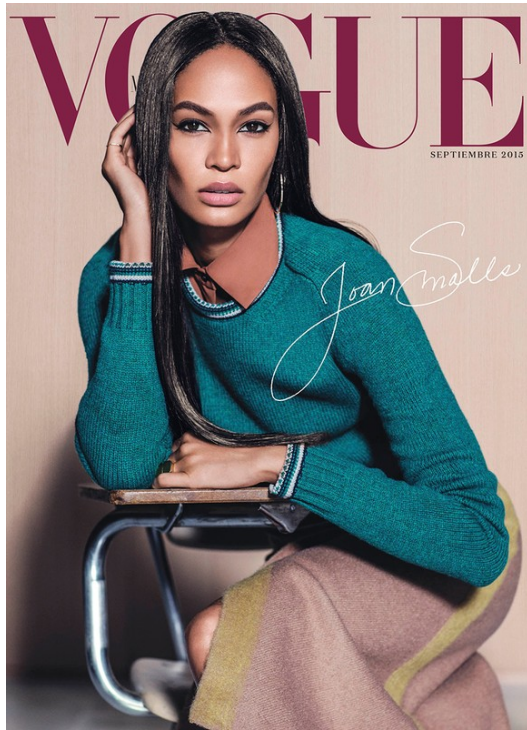


# Art Department



## NQ – By Request

www.art-dept.com





## NQ – By Request

www.art-dept.com



# Art Department



NQ – By Request

[www.art-dept.com](http://www.art-dept.com)

# Art Department



NQ – By Request

[www.art-dept.com](http://www.art-dept.com)



# Art Department



NQ – By Request

[www.art-dept.com](http://www.art-dept.com)

# Art Department



NQ – By Request

[www.art-dept.com](http://www.art-dept.com)



# Art Department



NQ – By Request

[www.art-dept.com](http://www.art-dept.com)



# Art Department



NQ – By Request

[www.art-dept.com](http://www.art-dept.com)



# Art Department



NQ – By Request

[www.art-dept.com](http://www.art-dept.com)



# Art Department



NQ – By Request

[www.art-dept.com](http://www.art-dept.com)



# Art Department

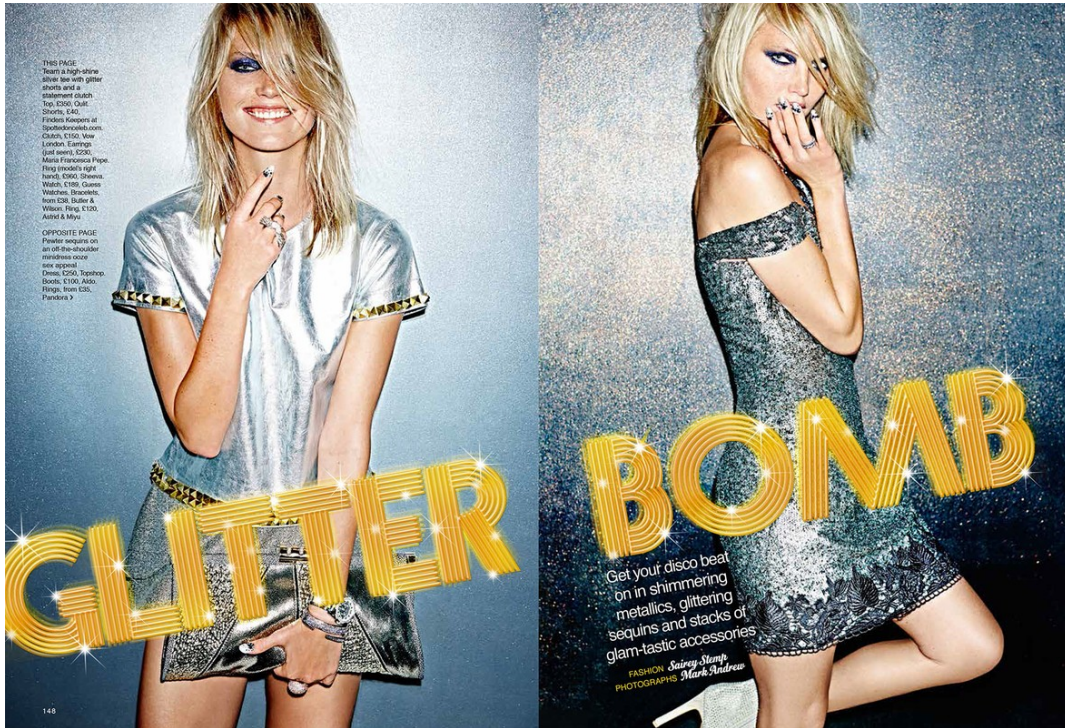


NQ – By Request

[www.art-dept.com](http://www.art-dept.com)



# Art Department



## NQ – By Request

www.art-dept.com



# Art Department



## NQ – By Request

www.art-dept.com



# Art Department



## NQ – By Request

www.art-dept.com



# Art Department



NQ – By Request

[www.art-dept.com](http://www.art-dept.com)



# Art Department



NQ – By Request

[www.art-dept.com](http://www.art-dept.com)



# Art Department



## NQ – By Request

[www.art-dept.com](http://www.art-dept.com)



# Art Department



NQ – By Request

www.art-dept.com



# Art Department



## NQ – By Request

www.art-dept.com



# Art Department

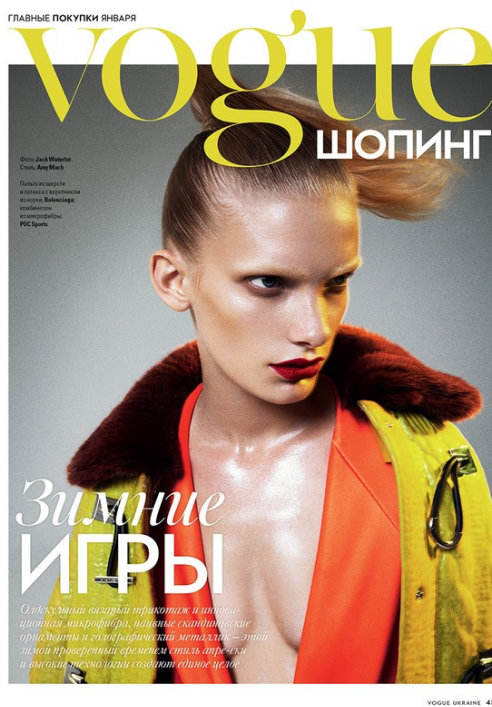


NQ – By Request

[www.art-dept.com](http://www.art-dept.com)



# Art Department



NQ – By Request

[www.art-dept.com](http://www.art-dept.com)



# Art Department



## NQ – By Request

[www.art-dept.com](http://www.art-dept.com)



# Art Department



NQ – By Request

[www.art-dept.com](http://www.art-dept.com)



# Art Department



NQ – By Request

[www.art-dept.com](http://www.art-dept.com)



# Art Department



NQ – By Request

[www.art-dept.com](http://www.art-dept.com)



# Art Department



## NQ – By Request

[www.art-dept.com](http://www.art-dept.com)



# Art Department



NQ – By Request

[www.art-dept.com](http://www.art-dept.com)



# Art Department



NQ – By Request

[www.art-dept.com](http://www.art-dept.com)



# Art Department



NQ – By Request

[www.art-dept.com](http://www.art-dept.com)



# Art Department



NQ – By Request

[www.art-dept.com](http://www.art-dept.com)



# Art Department



NQ – By Request

[www.art-dept.com](http://www.art-dept.com)



# Art Department



## NQ – By Request

[www.art-dept.com](http://www.art-dept.com)



# Art Department



NQ – By Request

[www.art-dept.com](http://www.art-dept.com)



# Art Department



NQ – By Request

[www.art-dept.com](http://www.art-dept.com)



# Art Department



## MISS PERSONALITY

Don't underestimate the power of your personality.  
Show it off! Celebrate it! Take it to the max!  
Whether you're a fearless flopper or you channel your inner beauty queen for your style spirit, the message is clear.  
Just bring it.

PHOTOGRAPHED BY LIZ VON HOENE

Hair by Danyelle Hildson at Châleau NYC  
Makeup by Frances Halkaway for NARS & Yanka Paris  
Nails by NQ for Esse at Art Department

**JAZZ AGE**  
Is her liquid shimmer, champagne and matching metallic tones, the flapper's fashion past yet nothing on our glam Grubby girl. Art Deco 'Gatsby' costume gown - \$5,495 by Johanna Johnson. Antique Cartier jewelry, inspiration inspired from Melody Rodgers. Vintage '20s ring, New York Vintage, NYC.

60 | INSIDEweddings.com

INSIDEweddings.com | 61

## NQ – By Request

[www.art-dept.com](http://www.art-dept.com)



# Art Department



NQ – By Request

www.art-dept.com



# Art Department



NQ – By Request

[www.art-dept.com](http://www.art-dept.com)

# Art Department



## NQ – By Request

[www.art-dept.com](http://www.art-dept.com)



LEXY HEDGS  
 JACQUE BARBARO ARMAND  
 JACQUE VERREAU JONNA WASHBAUM FROM NEW YORK YOUNG  
 JACQUE BARBARO JACQUE VERREAU FROM THE CARPENTERS  
 FROM NEW YORK YOUNG  
 CONTEMPORARY MUSIC BY JACQUE BARBARO ARMAND  
 GLOVES UNTIL FROM ALBERTO FERRARI LIBRARY  
 SHIRT PIERCE NEW HOLLAND

SHE'S WITH THE BAND

SILHOUETTES DON'T OFTEN EMERGE FROM THIN AIR. THE CONTOURS OF FASHION  
 FORM OVER SEASONS, LIKE GROOVES ON A VIOLIN THAT SOUND BETTER WITH TIME.  
 BEHOLD AND BREAK IN THE BOLD SHAPE OF THINGS TO COME

PHOTOGRAPHY ANTHONY MAULE  
 FASHION TOM VAN DOORPE



www.art-dept.com

# Art Department



HAIR: MICHAEL  
MAKEUP: JESSICA  
STYLING: JESSICA  
DRESS: JESSICA  
JACKET: JESSICA  
SHIRT: JESSICA  
PANTS: JESSICA  
SHOES: JESSICA  
ACCESSORIES: JESSICA



HAIR: MICHAEL  
MAKEUP: JESSICA  
STYLING: JESSICA  
DRESS: JESSICA  
JACKET: JESSICA  
SHIRT: JESSICA  
PANTS: JESSICA  
SHOES: JESSICA  
ACCESSORIES: JESSICA



## NQ – By Request

[www.art-dept.com](http://www.art-dept.com)



# Art Department



NQ – By Request

[www.art-dept.com](http://www.art-dept.com)

# Art Department



## NQ – By Request

www.art-dept.com



**Modeladora**  
del "Big Top"  
Pirelli  
fotografiada en esta  
sesión en los días  
recientes. Foto  
de Barnard, con  
de Paul Smith,  
con el uso de Aliza  
cambios, vestidos  
de Alexander  
McQueen  
pendientes "Mano"  
de Tessa Miller  
en NY Vintage.

**Asistente de**  
Estilismo:  
Lecount Moore.  
Peluquero:  
Arlene Clark  
(The Wall Group).  
Acabados de  
peluquería:  
Julia Alexander  
y Catherine Bates.  
Maquillaje:  
Aroni Vulliamy con  
producción MAC PRO.  
Música:  
NO para Deborah  
Lipman  
(Art-Department)  
Casting:  
Edward Kim  
(The Edit Desk).  
Fotografía en  
ROOT Studios.  
Direcciones  
en la página 60



www.art-dept.com

# Art Department



## NQ – By Request

www.art-dept.com



# Art Department

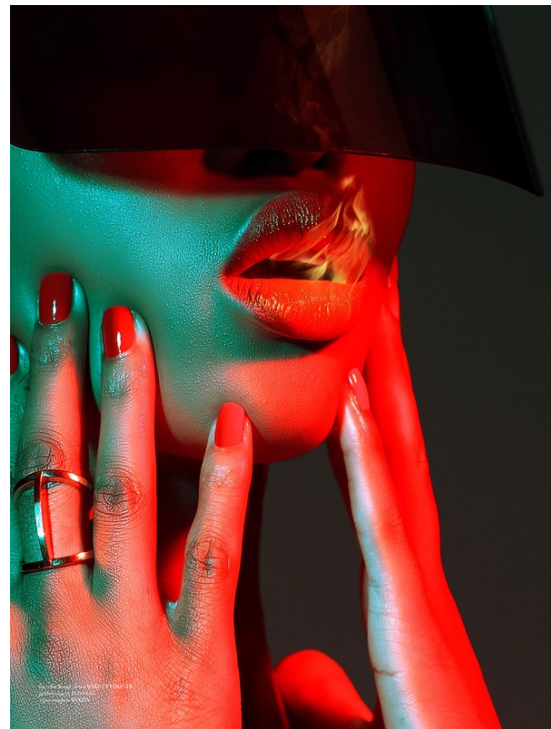


NQ – By Request

[www.art-dept.com](http://www.art-dept.com)



# Art Department



NQ – By Request

[www.art-dept.com](http://www.art-dept.com)



# Art Department



## AÑOS LOCOS

La década de "El gran Gatsby" y aquellas flappers que hicieron de los flecos, transparencias y brillos un canto de libertad revive hoy. ¡Bienvenidos a los 20's!

Fotógrafo: ADAM WHITEHEAD. Realización: ALEXA RODRIGO  
Estilista: MARY FELLOWES. Supervisión: MELING ALVAREZ



IVÁN DE MIRADAS  
Perlas, vision y un toque  
más para ser la estrella.  
Vestido de seda y encaje  
con detalles de cuero, de  
BICHMAZAR; abrigo  
de visón, de Helen Yarnall;  
café de cuero con hebilla  
en metal, de Fenton Fallow;  
collar de perlas en tono  
blanco, de Tom Blom.

## NQ – By Request

[www.art-dept.com](http://www.art-dept.com)

# Art Department



NQ – By Request

[www.art-dept.com](http://www.art-dept.com)