

Art Department



Rebecca Plymate

www.art-dept.com

Art Department



Rebecca Plymate

www.art-dept.com

Art Department



Rebecca Plymate

www.art-dept.com

Art Department



Rebecca Plymate

www.art-dept.com

Art Department



frances de lourdes

Rebecca Plymate

www.art-dept.com

Art Department



Rebecca Plymate

www.art-dept.com

Art Department



Rebecca Plymate

www.art-dept.com

Art Department



Rebecca Plymate

www.art-dept.com

Art Department



Rebecca Plymate

www.art-dept.com

Art Department



Rebecca Plymate

www.art-dept.com

Art Department



Rebecca Plymate

www.art-dept.com

Art Department



Rebecca Plymate

www.art-dept.com

Art Department



Rebecca Plymate

www.art-dept.com

Art Department



Rebecca Plymate

www.art-dept.com

Art Department



Rebecca Plymate

www.art-dept.com

Art Department



Rebecca Plymate

www.art-dept.com

Art Department



Rebecca Plymate

www.art-dept.com

Art Department



Rebecca Plymate

www.art-dept.com

Art Department



VERONICA BEARD

Rebecca Plymate

www.art-dept.com

Art Department



VERONICA BEARD

Rebecca Plymate

www.art-dept.com

Art Department



Rebecca Plymate

www.art-dept.com

Art Department



Rebecca Plymate

www.art-dept.com

Art Department



Rebecca Plymate

www.art-dept.com

Art Department



Rebecca Plymate

www.art-dept.com

Art Department



Rebecca Plymate

www.art-dept.com

Art Department



Rebecca Plymate

www.art-dept.com

Art Department



Rebecca Plymate

www.art-dept.com

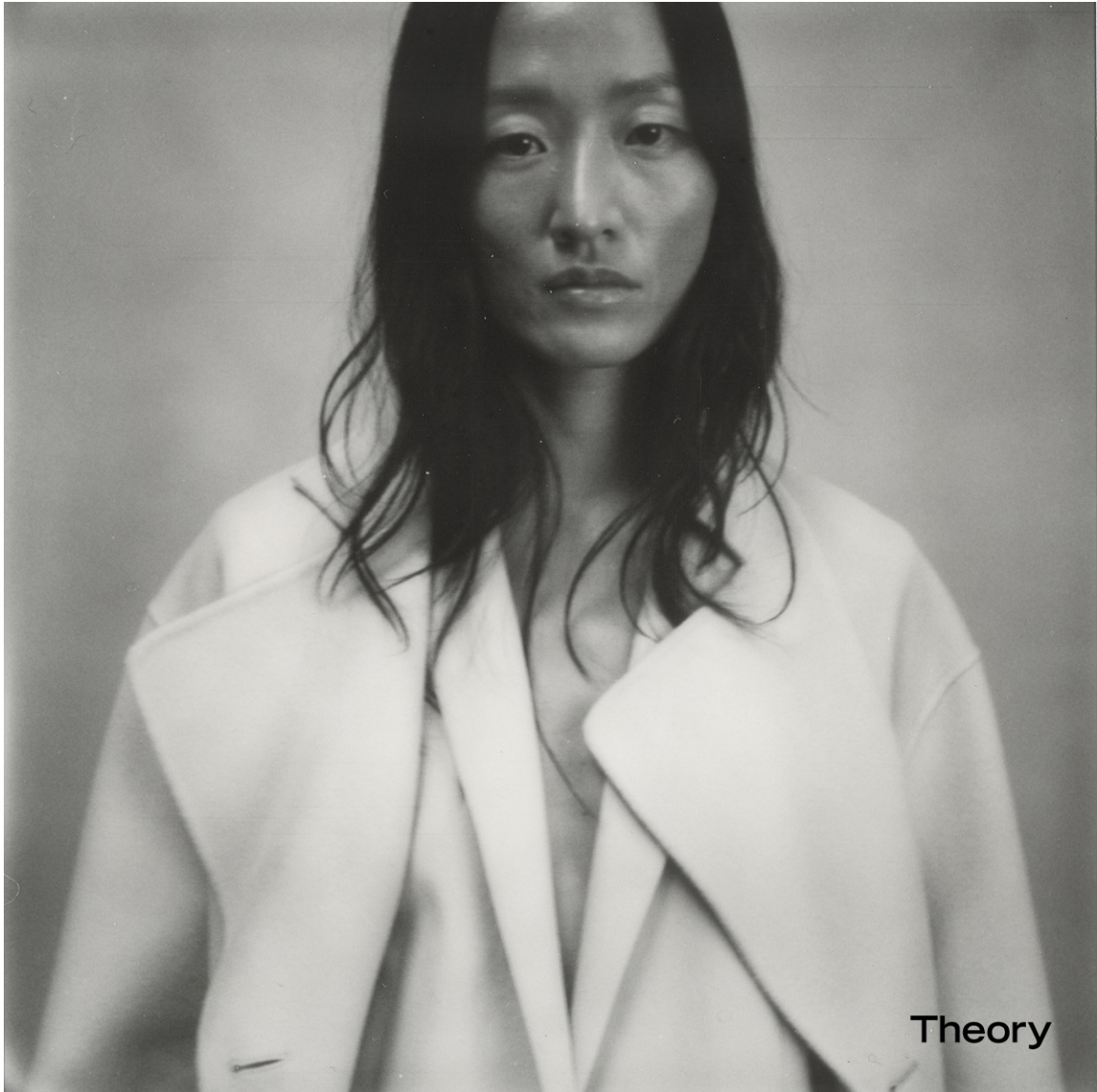
Art Department



Rebecca Plymate

www.art-dept.com

Art Department



Rebecca Plymate

www.art-dept.com

Art Department



Rebecca Plymate

www.art-dept.com

Art Department



Rebecca Plymate

www.art-dept.com

Art Department



Rebecca Plymate

www.art-dept.com

Art Department



Rebecca Plymate

www.art-dept.com

Art Department



Rebecca Plymate

www.art-dept.com

Art Department



Rebecca Plymate

www.art-dept.com

Art Department



Rebecca Plymate

www.art-dept.com

Art Department



Rebecca Plymate

www.art-dept.com

Art Department



Rebecca Plymate

www.art-dept.com

Art Department



Rebecca Plymate

www.art-dept.com

Art Department



Rebecca Plymate

www.art-dept.com

Art Department



Rebecca Plymate

www.art-dept.com

Art Department



Rebecca Plymate

www.art-dept.com

Art Department



Rebecca Plymate

www.art-dept.com

Art Department



Rebecca Plymate

www.art-dept.com

Art Department



Rebecca Plymate

www.art-dept.com

Art Department



Rebecca Plymate

www.art-dept.com

Art Department



Rebecca Plymate

www.art-dept.com

Art Department



Rebecca Plymate

www.art-dept.com

Art Department



Rebecca Plymate

www.art-dept.com

Art Department



Rebecca Plymate

www.art-dept.com

Art Department

CLUB MONACO



Rebecca Plymate

www.art-dept.com

Art Department



Rebecca Plymate

www.art-dept.com

Art Department



CLUB MONACO

Rebecca Plymate

www.art-dept.com

Art Department



Rebecca Plymate

www.art-dept.com

Art Department



Rebecca Plymate

www.art-dept.com

Art Department



Rebecca Plymate

www.art-dept.com

Art Department



Rebecca Plymate

www.art-dept.com

Art Department



Rebecca Plymate

www.art-dept.com

Art Department



Rebecca Plymate

www.art-dept.com

Art Department



Rebecca Plymate

www.art-dept.com

Art Department



Rebecca Plymate

www.art-dept.com

Art Department



Rebecca Plymate

www.art-dept.com

Art Department



Rebecca Plymate

www.art-dept.com

Art Department



Rebecca Plymate

www.art-dept.com

Art Department



Rebecca Plymate

www.art-dept.com

Art Department



Rebecca Plymate

www.art-dept.com

Art Department



Rebecca Plymate

www.art-dept.com

Art Department



Rebecca Plymate

www.art-dept.com

Art Department



Rebecca Plymate

www.art-dept.com

Art Department



Rebecca Plymate

www.art-dept.com

Art Department



Rebecca Plymate

www.art-dept.com

Art Department



Rebecca Plymate

www.art-dept.com

Art Department



Rebecca Plymate

www.art-dept.com

Art Department



Rebecca Plymate

www.art-dept.com

Art Department



Rebecca Plymate

www.art-dept.com

Art Department



Rebecca Plymate

www.art-dept.com

Art Department



Rebecca Plymate

www.art-dept.com

Art Department



Rebecca Plymate

www.art-dept.com

Art Department



Rebecca Plymate

www.art-dept.com

Art Department



Rebecca Plymate

www.art-dept.com

Art Department



Rebecca Plymate

www.art-dept.com

Art Department



Rebecca Plymate

www.art-dept.com

Art Department



Rebecca Plymate

www.art-dept.com

Art Department



Rebecca Plymate

www.art-dept.com

Art Department



Rebecca Plymate

www.art-dept.com

Art Department



Rebecca Plymate

www.art-dept.com

Art Department



Rebecca Plymate

www.art-dept.com

Art Department



Rebecca Plymate

www.art-dept.com

Art Department



Rebecca Plymate

www.art-dept.com

Art Department



Rebecca Plymate

www.art-dept.com

Art Department



Rebecca Plymate

www.art-dept.com

Art Department



Rebecca Plymate

www.art-dept.com

Art Department



Rebecca Plymate

www.art-dept.com

Art Department



Rebecca Plymate

www.art-dept.com

Art Department



Rebecca Plymate

www.art-dept.com

Art Department



Rebecca Plymate

www.art-dept.com

Art Department



Rebecca Plymate

www.art-dept.com

Art Department



Rebecca Plymate

www.art-dept.com

Art Department



Rebecca Plymate

www.art-dept.com

Art Department



Rebecca Plymate

www.art-dept.com

Art Department



Rebecca Plymate

www.art-dept.com

Art Department



Rebecca Plymate

www.art-dept.com

Art Department



Rebecca Plymate

www.art-dept.com

Art Department



Rebecca Plymate

www.art-dept.com

Art Department



Rebecca Plymate

www.art-dept.com

Art Department



Rebecca Plymate

www.art-dept.com

Art Department



Rebecca Plymate

www.art-dept.com

Art Department



Rebecca Plymate

www.art-dept.com

Art Department



Rebecca Plymate

www.art-dept.com

Art Department



Rebecca Plymate

www.art-dept.com

Art Department



Rebecca Plymate

www.art-dept.com

Art Department



Thank you Ivy Vance for making
your mom's 1977 Nordstrom shoe style
even cooler the second time around.
Happy Holidays.

Love,
NORDSTROM

Rebecca Plymate

www.art-dept.com

Art Department



Thank you Grace Goodson for being
our model, muse, and customer, all
rolled into one stylish individual.
Happy Holidays.

Love,
NORDSTROM

Rebecca Plymate

www.art-dept.com

Art Department



Thank you Ann Hidalgo for shopping
with us over the past two decades and
teaching us the importance of elegance
along the way. Happy Holidays.

Love,
NORDSTROM

Rebecca Plymate

www.art-dept.com

Art Department



Thank you Lucius Talley
for becoming a first-time
customer at 77 years young.
Happy Holidays.

Love,
NORDSTROM

Rebecca Plymate

www.art-dept.com

Art Department



Thank you Chiyo Ishikawa for teaching
us for nearly 3 decades that all
you need in life is the right attitude
and a red lip. Happy Holidays.

Love,
NORDSTROM

Rebecca Plymate

www.art-dept.com

Art Department



Thank you Phoenix Johnson
for coming to us for your
high fashion basics.
Happy Holidays.

Love,
NORDSTROM

Rebecca Plymate

www.art-dept.com

Art Department



Thank you Jonah Powers-Myszka for
coming to see us the first morning we
opened in Nashville. Trust us, we're not
morning people either. Happy Holidays.

Love,
NORDSTROM

Rebecca Plymate

www.art-dept.com

Art Department



Rebecca Plymate

www.art-dept.com

Art Department



Rebecca Plymate

www.art-dept.com

Art Department



Rebecca Plymate

www.art-dept.com

Art Department



Rebecca Plymate

www.art-dept.com

Art Department



Rebecca Plymate

www.art-dept.com

Art Department



Rebecca Plymate

www.art-dept.com

Art Department



Rebecca Plymate

www.art-dept.com

Art Department



Rebecca Plymate

www.art-dept.com

Art Department



Rebecca Plymate

www.art-dept.com

Art Department



Rebecca Plymate

www.art-dept.com

Art Department



Rebecca Plymate

www.art-dept.com

Art Department



Rebecca Plymate

www.art-dept.com

Art Department



Rebecca Plymate

www.art-dept.com

Art Department



Rebecca Plymate

www.art-dept.com

Art Department



Rebecca Plymate

www.art-dept.com

Art Department



Rebecca Plymate

www.art-dept.com

Art Department



Rebecca Plymate

www.art-dept.com

Art Department



Rebecca Plymate

www.art-dept.com

Art Department



Rebecca Plymate

www.art-dept.com

Art Department



Rebecca Plymate

www.art-dept.com

Art Department



Rebecca Plymate

www.art-dept.com

Art Department



Rebecca Plymate

www.art-dept.com

Art Department



Rebecca Plymate

www.art-dept.com

Art Department



Rebecca Plymate

www.art-dept.com

Art Department



Rebecca Plymate

www.art-dept.com

Art Department



Rebecca Plymate

www.art-dept.com

Art Department



Rebecca Plymate

www.art-dept.com

Art Department



Rebecca Plymate

www.art-dept.com

Art Department



Rebecca Plymate

www.art-dept.com

Art Department



Rebecca Plymate

www.art-dept.com

Art Department



Rebecca Plymate

www.art-dept.com

Art Department



Rebecca Plymate

www.art-dept.com

Art Department



Rebecca Plymate

www.art-dept.com

Art Department



Rebecca Plymate

www.art-dept.com

Art Department



SANDPIPER DRESS
lantern sleeve,
engineered peacock
print, self belt
(not shown), 0-14,
silk twill in
cameo white ms.
peacock. \$298.

Rebecca Plymate

www.art-dept.com

Art Department



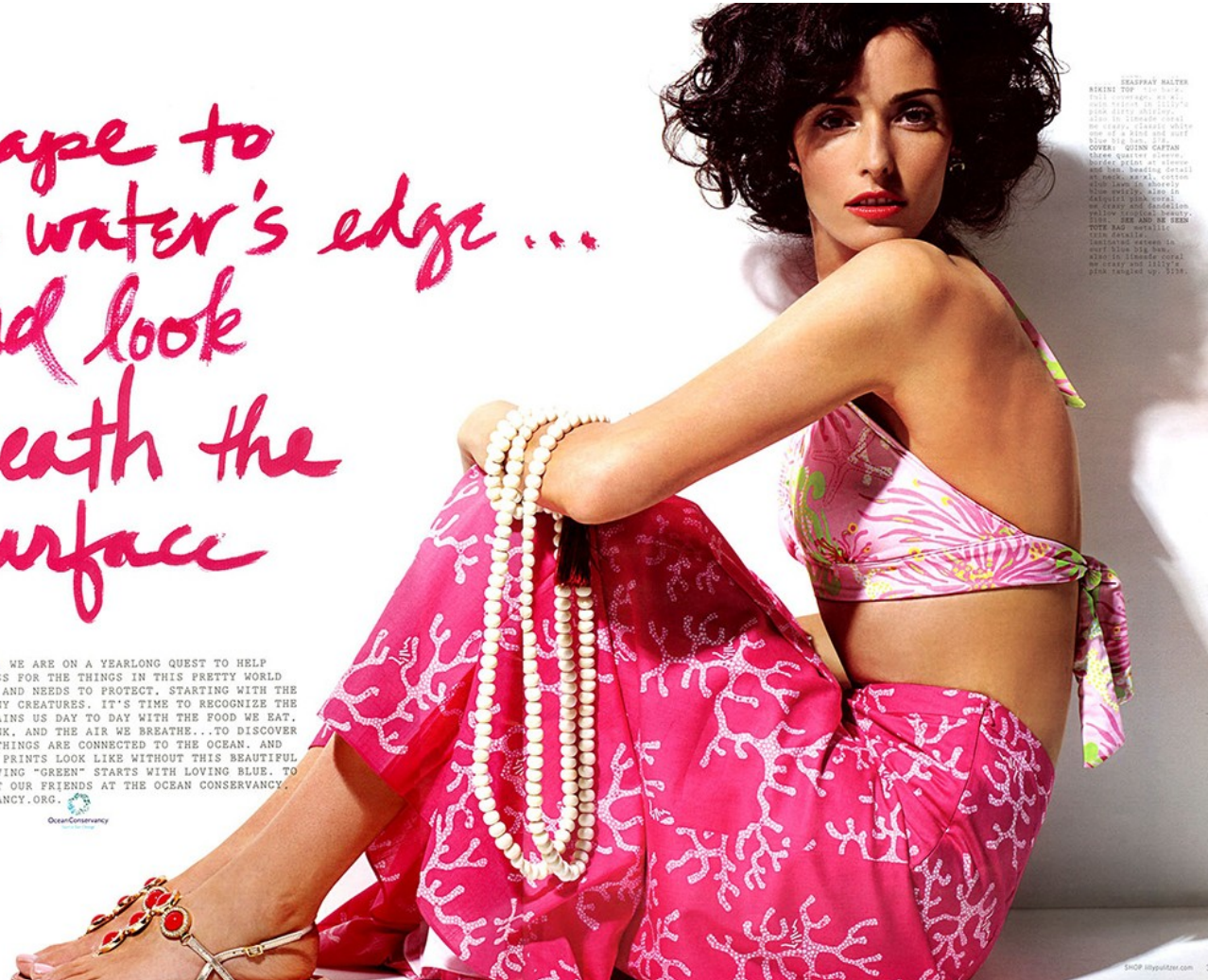
Rebecca Plymate

www.art-dept.com

Art Department

Escape to
the water's edge ...
and look
beneath the
surface

BEING SEA WORTHY. WE ARE ON A YEARLONG QUEST TO HELP GENERATE AWARENESS FOR THE THINGS IN THIS PRETTY WORLD THAT LILLY LOVES AND NEEDS TO PROTECT. STARTING WITH THE OCEAN AND ITS MANY CREATURES. IT'S TIME TO RECOGNIZE THE SOURCE THAT SUSTAINS US DAY TO DAY WITH THE FOOD WE EAT, THE WATER WE DRINK, AND THE AIR WE BREATHE...TO DISCOVER THAT ALL LIVING THINGS ARE CONNECTED TO THE OCEAN. AND WHAT WOULD LILLY PRINTS LOOK LIKE WITHOUT THIS BEAUTIFUL INSPIRATION? LIVING "GREEN" STARTS WITH LOVING BLUE. TO LEARN MORE, VISIT OUR FRIENDS AT THE OCEAN CONSERVANCY. WWW.OCEANCONSERVANCY.ORG.



HEADSPRAY HALTER
NECKLINE TOP
Full coverage, no. 42
Jade white, in Lilly's
pink dirty white
also in limeade coral
no crazy, classic white
of a pink and white
blue big, no. 112
COVER: QUINN CAPTAN
Three quarter sleeve,
border print at sleeve
and hem. Binding detail
at neck, back, cotton
also seen in white
blue white, also in
delicate blue coral
no crazy and dandelion
yellow coral, heavy
112, 112 and 112
TOTE BAG: METALLIC
pink coral
inspired colors in
soft blue big, no.
also in limeade coral
no crazy and Lilly's
pink, washed up, 112

shop.lillyprints.com 3

Rebecca Plymate

www.art-dept.com

Art Department



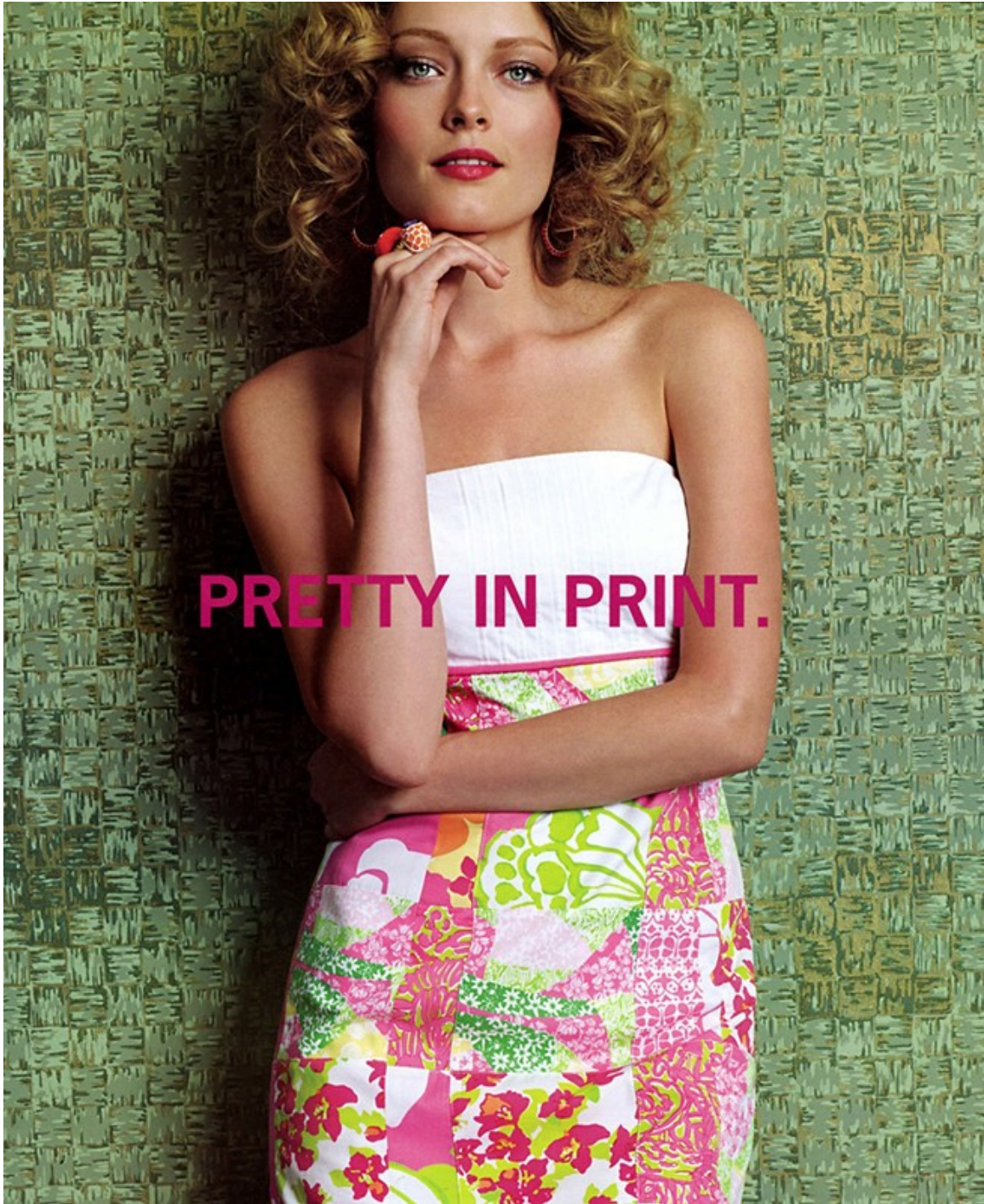
GENEVIEVE DRESS three
quarter sleeve, tunic
style dress, novelty
buttons on center
front, 0-16, with in
deliquiri pink wishing
you were here, also in
multi near-chin, \$298.

FASCINATING FACT: In
the past, it was called
an "art-deco" dress.
It was called "art-deco"
because it was
inspired by the art
movement of the 1920s.
It was called "art-deco"
because it was
inspired by the art
movement of the 1920s.

Rebecca Plymate

www.art-dept.com

Art Department



Rebecca Plymate

www.art-dept.com

Art Department



Rebecca Plymate

www.art-dept.com

Art Department



Rebecca Plymate

www.art-dept.com

Art Department



Rebecca Plymate

www.art-dept.com

Art Department



Rebecca Plymate

www.art-dept.com

Art Department



Rebecca Plymate

www.art-dept.com

Art Department



Rebecca Plymate

www.art-dept.com

Art Department



Rebecca Plymate

www.art-dept.com

Art Department



Rebecca Plymate

www.art-dept.com

Art Department



Rebecca Plymate

www.art-dept.com

Art Department



Rebecca Plymate

www.art-dept.com

Art Department



READY FOR TAKEOFF

- camilla crochet short dress * \$425 (slip sold separately)
- elena gishelini cupido bag * \$995
- pepita knot bracelet \$135

OPPOSITE PAGE

- by malene birger morouque top * \$375
- AG cropped boyfriend khaki \$225
- clockwise from right
- waterlily vera shopper \$350
- calypso vintage weekender \$495
- elena gishelini cupido bag * \$995
- antik batik albane tote \$395
- sissi rossi zip hobo * \$825
- sissi rossi gold trim tote * \$775
- antik batik lucinda mirror bag \$425

* in select stores & online

always free shipping on orders over \$250

FIND A STORE NEAR YOU AT CALYPSO-CELLE.COM

Rebecca Plymate

www.art-dept.com

Art Department



CALYPSO
St. Barth

NEW YORK EAST HAMPTON MONTAUK SAG HARBOR SOUTHAMPTON WESTHAMPTON CALYPSOSTBARTH.COM

Rebecca Plymate

www.art-dept.com

Art Department



Rebecca Plymate

www.art-dept.com

Art Department



Rebecca Plymate

www.art-dept.com

Art Department



Rebecca Plymate

www.art-dept.com

Art Department



Rebecca Plymate

www.art-dept.com

Art Department



Rebecca Plymate

www.art-dept.com

Art Department



Rebecca Plymate

www.art-dept.com

Art Department



Rebecca Plymate

www.art-dept.com

Art Department



Rebecca Plymate

www.art-dept.com

Art Department



Rebecca Plymate

www.art-dept.com

Art Department



Yes, you can throw a party. You, of the take-out menus and tower of empty deli containers—yes, even you of the barren fridge. And guess what? Everyone's coming, and no one's going to want to leave, because our tip-packed guide to entertaining has you covered, from your menu to your makeup.

**INSTANTLY ELEGANT
SERVING IDEA**
Skewer lamb slices on a sprig of fresh rosemary for a prettier presentation. Recipe on page 257.

Rebecca Plymate

www.art-dept.com

Art Department



Rebecca Plymate

www.art-dept.com

Art Department



Rebecca Plymate

www.art-dept.com

Art Department



Rebecca Plymate

www.art-dept.com

Art Department



Rebecca Plymate

www.art-dept.com

Art Department

VINCE
Effortless, simple & so sublime



Rebecca Plymate

www.art-dept.com

Art Department



Rebecca Plymate

www.art-dept.com

Art Department



Rebecca Plymate

www.art-dept.com

Art Department



Rebecca Plymate

www.art-dept.com

Art Department



Rebecca Plymate

www.art-dept.com

Art Department



Rebecca Plymate

www.art-dept.com

Art Department



Rebecca Plymate

www.art-dept.com

Art Department



Minicoat di lana con
allacciatura nascosta,
Versace. Stivaletti
di pelle con platform
e tacco a spillo, Yves
Saint Laurent. Pagina
accanto. Cappotto
a trapezio di lana e
cotone jacquard
spalmato, I'M Isola
Marras. Grande
colbacco di volpe,
Alexander McQueen.

Rebecca Plymate

www.art-dept.com

Art Department



Rebecca Plymate

www.art-dept.com

Art Department



Rebecca Plymate

www.art-dept.com

Art Department



Rebecca Plymate

www.art-dept.com


Art Department



Rebecca Plymate


www.art-dept.com


Art Department



MasterCard® is reserving priceless
New York experiences just for you.

Including VIP cooking demonstrations with Aarón Sánchez.



Learn more at facebook.com/mastercard 

Offers may vary. Limited quantities, on a first come, first served basis. Certain restrictions and terms & conditions apply. See mastercardmarketplace.com/nyc. MasterCard, the MasterCard Brand Mark, Priceless and MasterCard MarketPlace are trademarks of MasterCard International Incorporated. ©2018 MasterCard

Rebecca Plymate

www.art-dept.com

Art Department



MasterCard® is reserving priceless
New York experiences just for you.

Including VIP cooking demonstrations with Marcus Samuelsson.



Learn more at facebook.com/mastercard 

Offers may vary. Limited quantities, on a first come, first served basis. Certain restrictions and terms & conditions apply. See mastercard.com/marketplace for details. MasterCard, the MasterCard Brand Mark, Priceless and MasterCard MarketPlace are trademarks of MasterCard International Incorporated. ©2016 MasterCard

Rebecca Plymate


www.art-dept.com


Art Department



MasterCard® is reserving priceless
New York experiences just for you.

Including VIP concert seats.



Learn more at facebook.com/mastercard 

Offers may vary. Limited quantities, on a first come, first served basis. Certain restrictions and terms & conditions apply. See mastercard.com/mastercardplace. MasterCard, the MasterCard Brand Mark, Priceless and MasterCard MasterPlace are trademarks of MasterCard International Incorporated. ©2018 MasterCard

Rebecca Plymate

www.art-dept.com