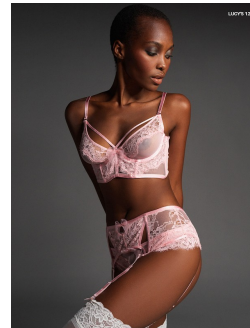
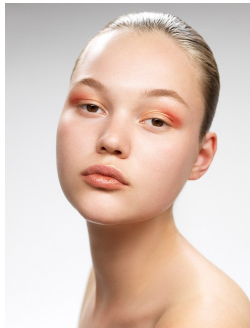
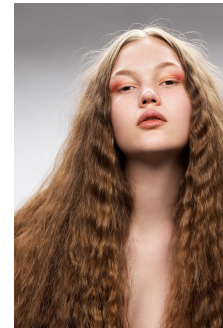
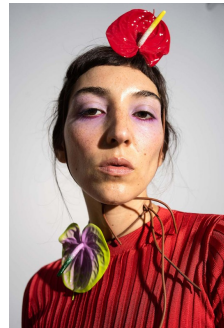
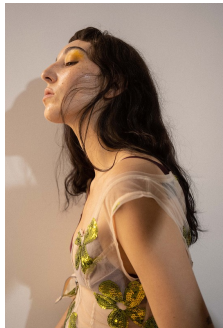
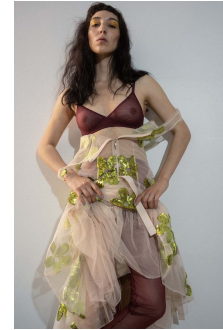
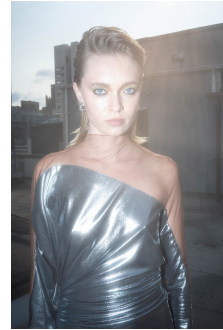
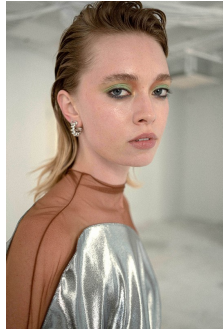
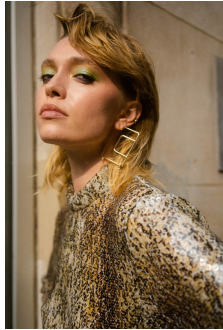


Art Department



Keiko Hamaguchi

www.art-dept.com

Art Department



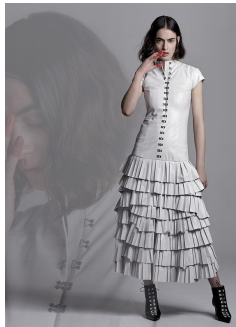
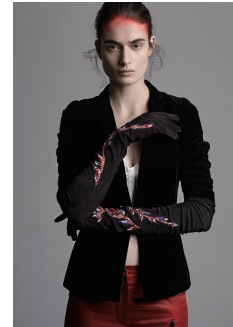
Somewhere between
BLACK AND WHITE



Keiko Hamaguchi

www.art-dept.com

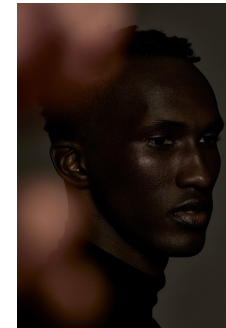
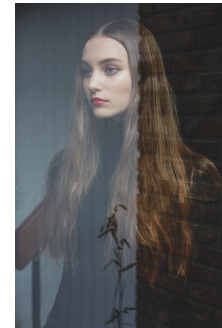
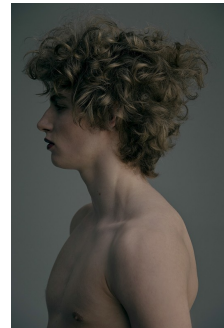
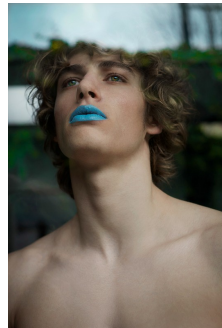
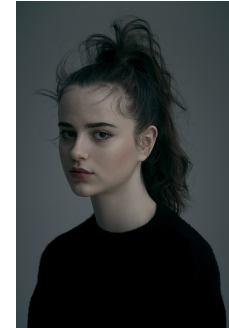
Art Department



Keiko Hamaguchi

www.art-dept.com

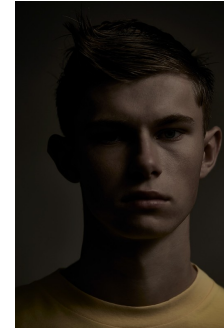
Art Department



Keiko Hamaguchi

www.art-dept.com

Art Department



Keiko Hamaguchi

www.art-dept.com

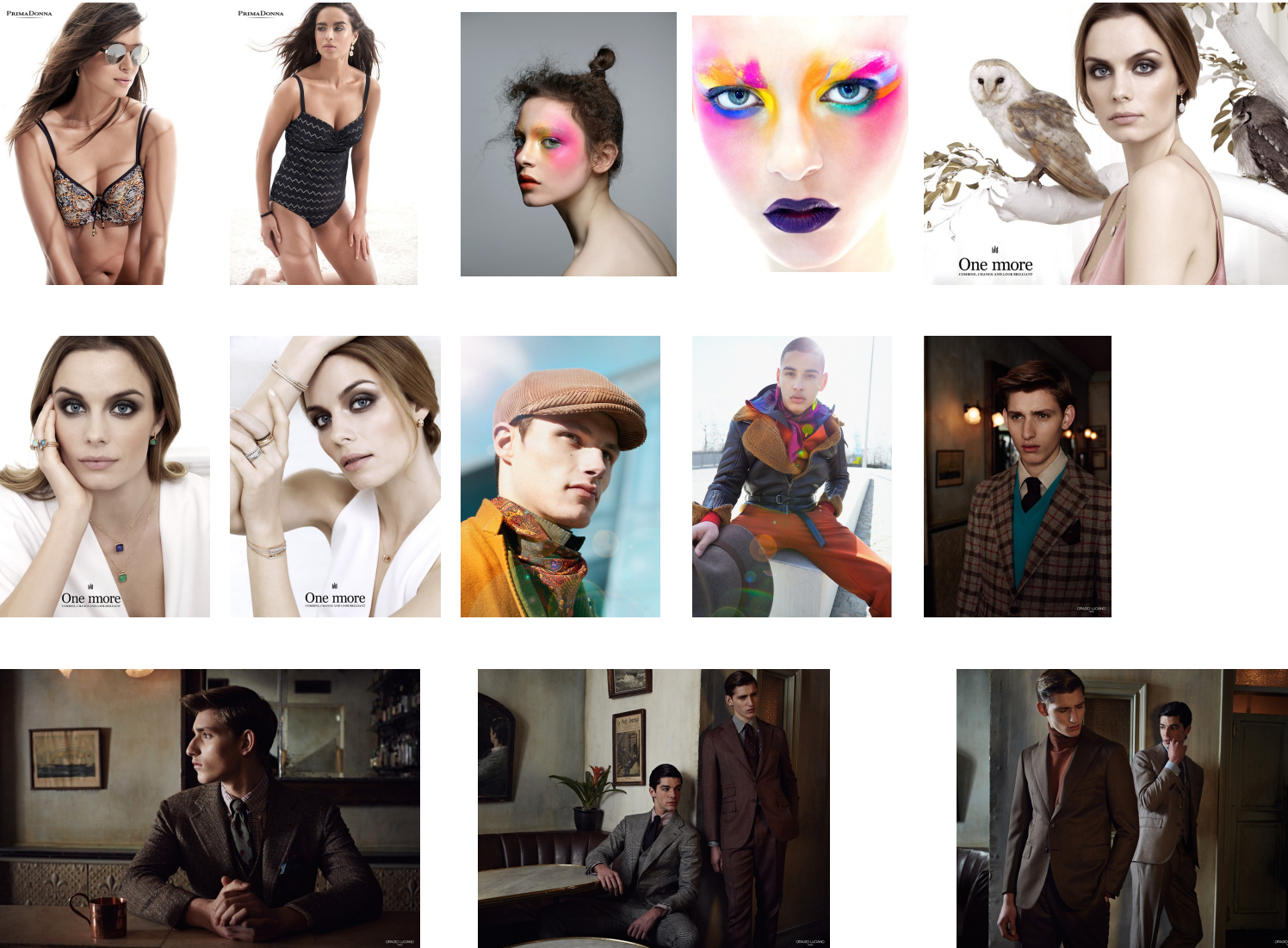
Art Department



Keiko Hamaguchi

www.art-dept.com

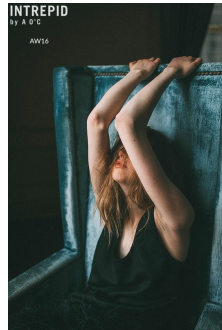
Art Department



Keiko Hamaguchi

www.art-dept.com

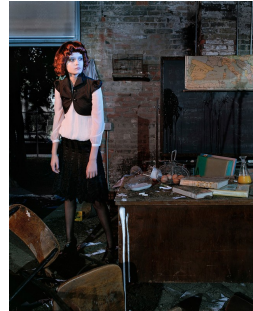
Art Department



Keiko Hamaguchi

www.art-dept.com

Art Department



ALWAYS RYUICHI

ON THE EVE OF A NEW ALBUM, OUT IN MARCH,
THE RENOWNED COMPOSER RYUICHI SAKAMOTO
REFLECTS ON THE ETERNITY OF SOUND

PHOTOGRAPH BY RACHEL CHANLER STYLING BY BOB HARTLESEN
HAIR BY RYUICHI SAKAMOTO ART DIRECTION BY DOMINIC TELA 2020

For the past 40 years, the Japanese composer has been creating a unique sound world. His music is a blend of traditional Japanese and Western influences, and it has inspired a generation of musicians. In this interview, he reflects on his career and the future of his music.



Keiko Hamaguchi

www.art-dept.com